

STATE OF ILLINOIS
DEPARTMENT OF TRANSPORTATION

GENERAL NOTES

Reinforcement bars shall conform to the requirements of ASTM A 706 Gr 60. See Special Provisions.

Reinforcement bars designated (E) shall be epoxy coated.

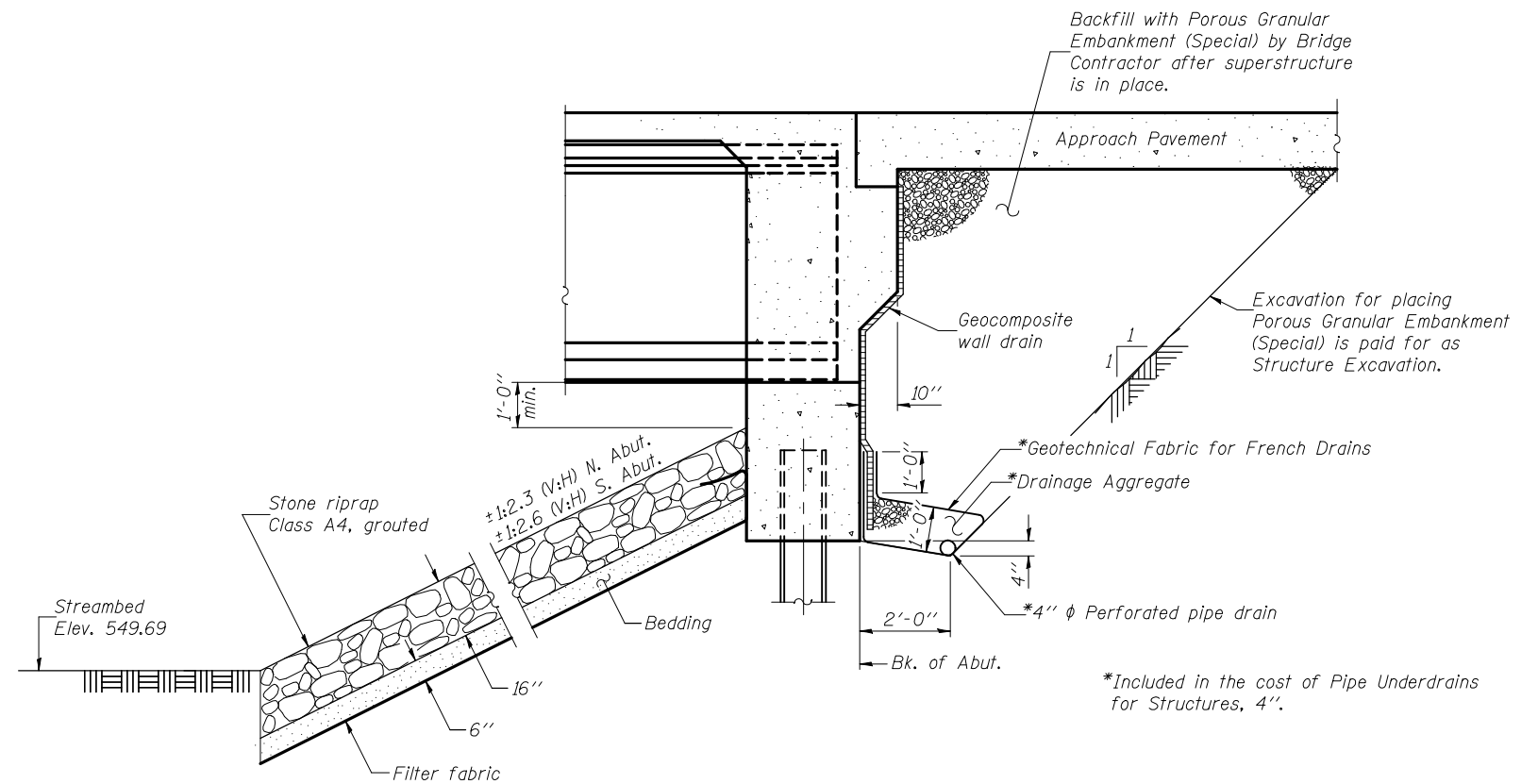
Layout of slope protection system may be varied in the field to suit ground conditions as directed by the Engineer.

The embankment configuration shown shall be the minimum that must be placed and compacted prior to construction of the abutments.

TOTAL BILL OF MATERIAL

ITEM	UNIT	SUPER	SUB	TOTAL
Porous Granular Embankment (Special)	Cu. Yd.		192	192
Removal of Existing Structures	Each	1		1
Structure Excavation	Cu. Yd.		375.0	375.0
Concrete Structures	Cu. Yd.		68.5	68.5
Concrete Superstructure	Cu. Yd.	316.6		316.6
Bridge Deck Grooving	Sq. Yd.	664		664
Concrete Encasement	Cu. Yd.		6.6	6.6
Protective Coat	Sq. Yd.	830		830
Furnishing and Erecting Precast Prestressed Concrete Bulb T-Beams, 63"	Foot	793.5		793.5
Reinforcement Bars, Epoxy Coated	Pound	66410	5360	71770
Furnishing Steel Piles HP14x89	Foot		186	186
Setting Piles in Rock	Each		12	12
Temporary Soil Retention System	Sq. Ft.		1088	1088
Name Plates	Each	1		1
Bar Splicers	Each	570	104	674
Geocomposite Wall Drain	Sq. Yd.		78	78
Pipe Underdrains for Structures, 4"	Foot		165	165
Asbestos Bearing Pad Removal	Each	22		22

Note: For quantities of riprap Class 4, filter fabric, and grout for use with riprap, see Roadway Plans.



SECTION THRU INTEGRAL ABUTMENT

Note: All drainage system components shall extend to 2'-0" from the end of each wingwall except an outlet pipe shall extend until intersecting with the grouted riprap. The pipes shall drain into concrete headwalls. (See Article 601.05 of the Standard Specifications and Highway Standard 601101).

DESIGNED	Fess Teklehaimanot
CHECKED	Stephen M. Ryan
DRAWN	h.t. duong
CHECKED	FT/SMR

November 24, 2010
 EXAMINED *Thomas J. Demagala*
 ENGINEER OF BRIDGE DESIGN
 PASSED *Ralph E. Anderson*
 ENGINEER OF BRIDGES AND STRUCTURES

GENERAL DATA
STRUCTURE NO. 034-0522

SHEET NO. 2	F.A.P. RTE.	SECTION	COUNTY	TOTAL SHEETS	SHEET NO.
	506	123B-1	HANCOCK	36	70
23 SHEETS	CONTRACT NO. 72992				
ILLINOIS FED. AID PROJECT					