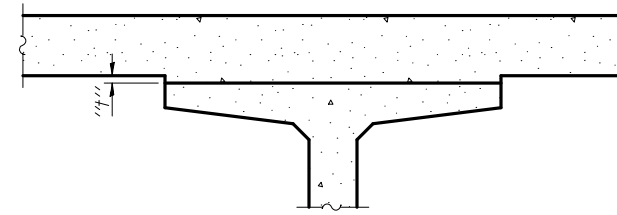
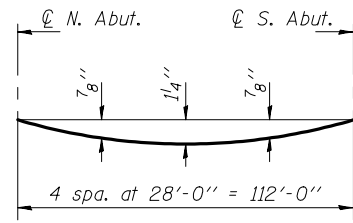


STATE OF ILLINOIS
DEPARTMENT OF TRANSPORTATION



To determine "t": After all precast prestressed beams have been erected, elevations of the top flanges of the beams shall be taken at intervals shown below. These elevations subtracted from the "Theoretical Grade Elevations Adjusted for Dead Load Deflections" shown on sheets 6 & 7 of 23, minus 8" deck thickness, equals the fillet heights "t" above top flanges of beams.

FILLET HEIGHTS

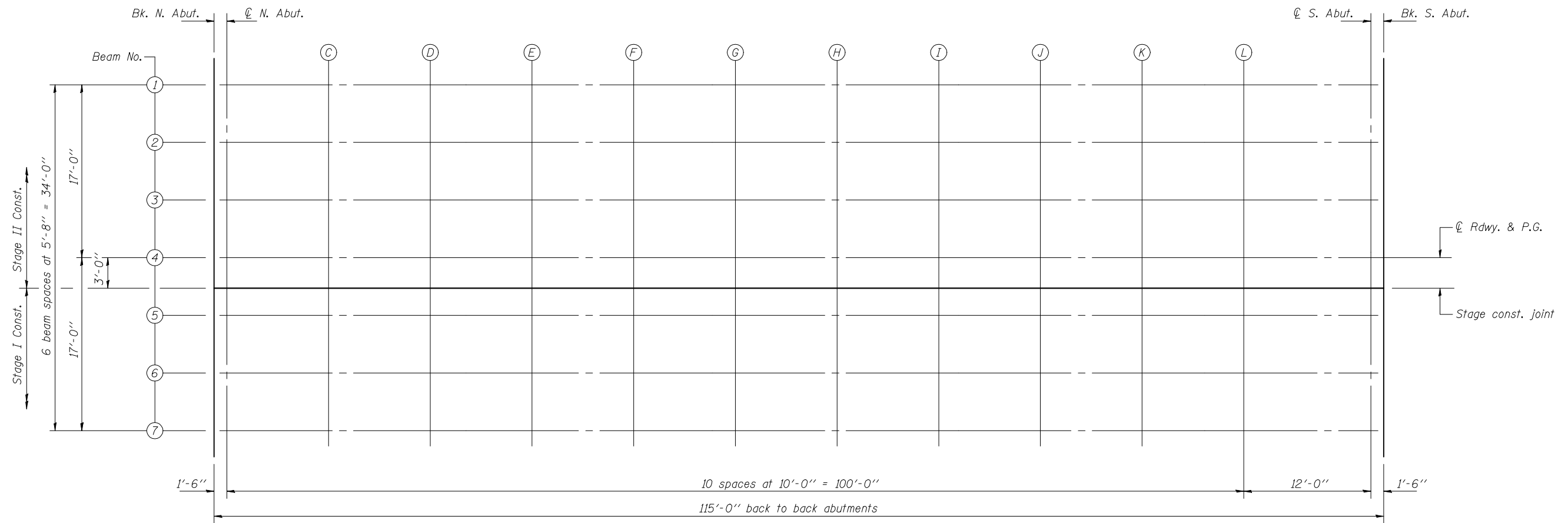
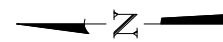


DEAD LOAD DEFLECTION DIAGRAM

(Includes weight of concrete, excluding beams).

Note:

The above deflections are not to be used in the field if the engineer is working from the grade elevations adjusted for dead load deflections as shown on sheets 6 & 7 of 23.



PLAN

DESIGNED	Fess Teklehaimanot
CHECKED	Stephen M. Ryan
DRAWN	h.t. duong
CHECKED	FT/SMR

November 24, 2010

EXAMINED	Thomas J. Demagala ENGINEER OF BRIDGE DESIGN
PASSED	Ralph E. Anderson ENGINEER OF BRIDGES AND STRUCTURES

TOP OF SLAB ELEVATIONS
STRUCTURE NO. 034-0522

SHEET NO. 5 23 SHEETS	F.A.P. RTE. 506	SECTION 123B-1	COUNTY HANCOCK	TOTAL SHEETS 39	SHEET NO. 70
	CONTRACT NO. 72992			ILLINOIS FED. AID PROJECT	