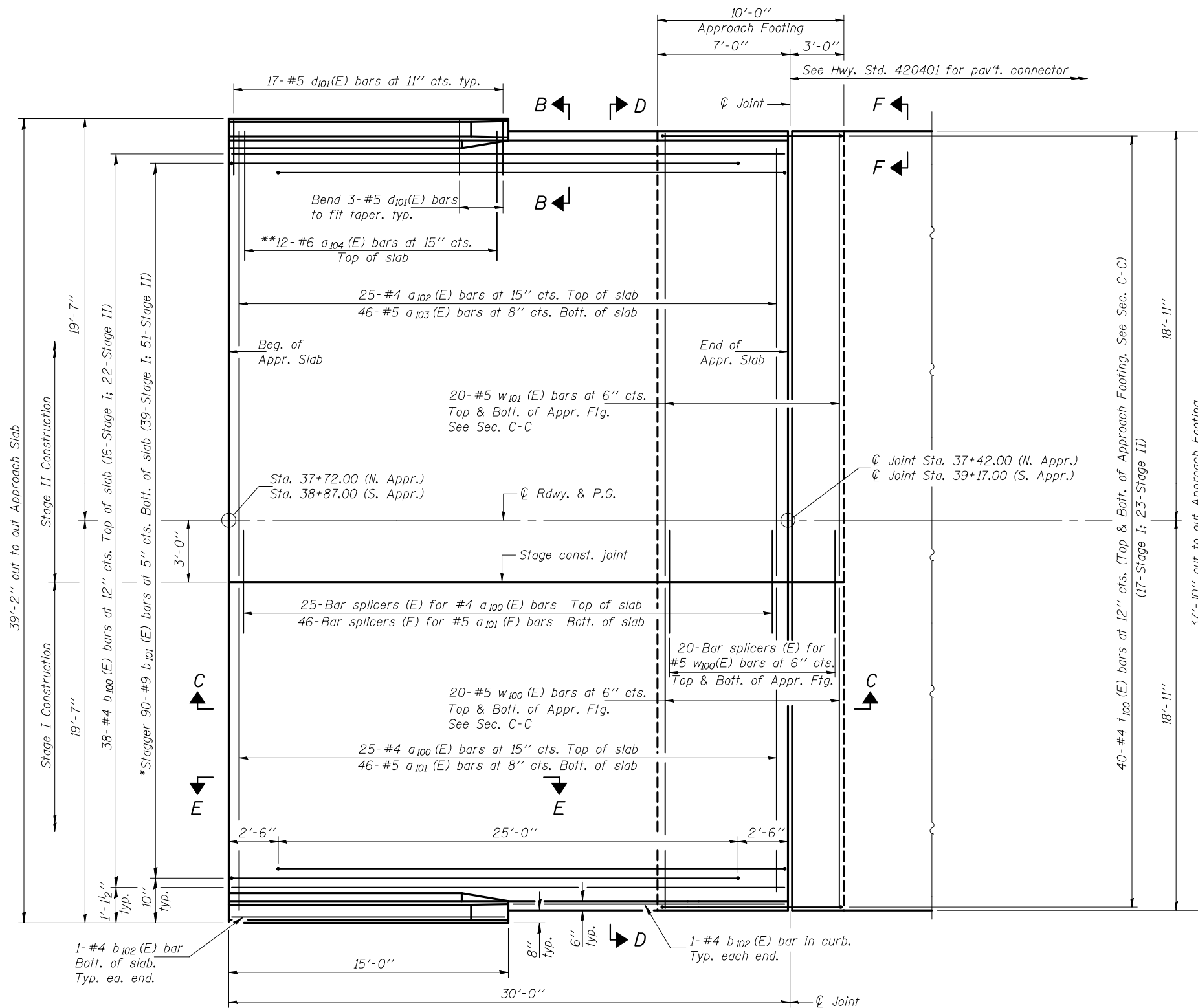
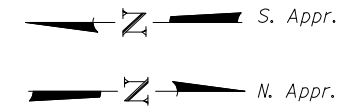


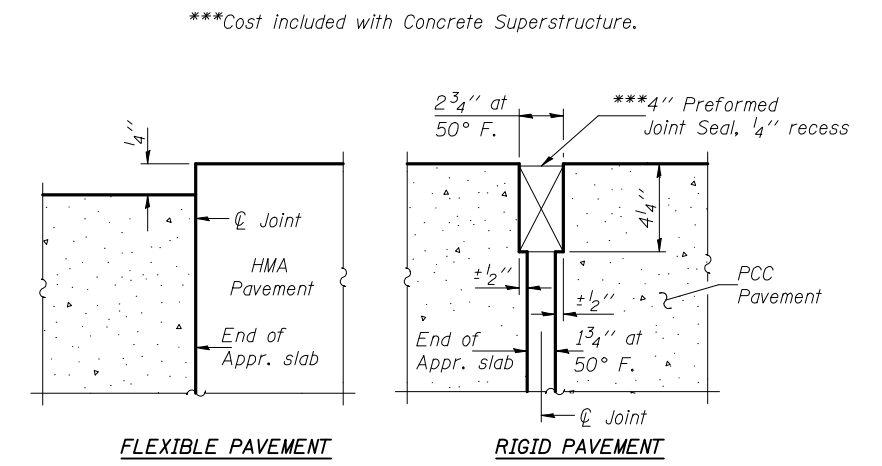
STATE OF ILLINOIS
DEPARTMENT OF TRANSPORTATION

Notes: See sheet 14 of 23 for Sections C-C & D-D and View E-E.
a₁₀₀ (E), a₁₀₁ (E), a₁₀₂ (E), a₁₀₃ (E) and w₁₀₀ (E) bar spacings measured perpendicular to \perp Rdwy.

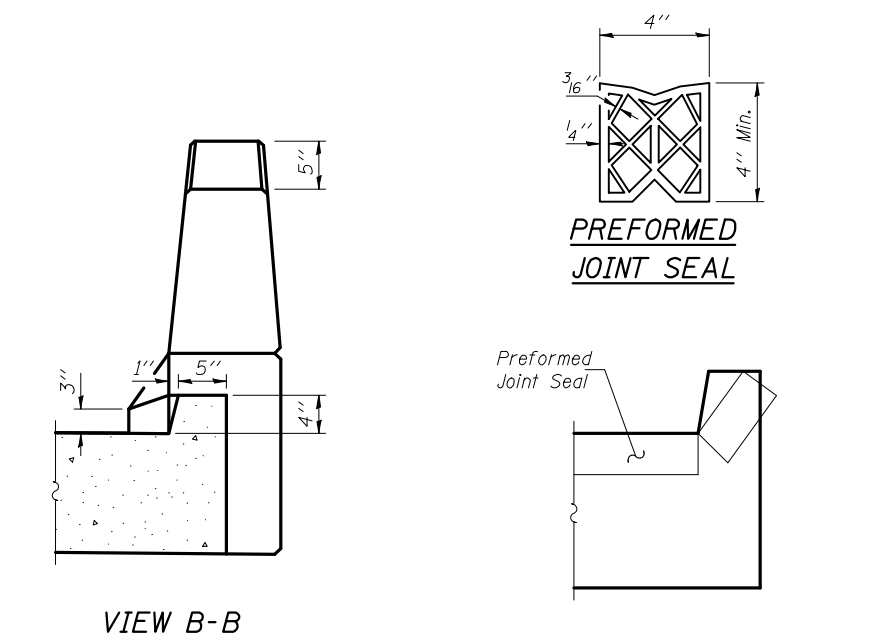


PLAN

(South Approach shown - North Approach similar by mirror image)



DETAIL A



Angle Preformed Joint Seal at 45° at curbs when req'd for drainage.

DESIGNED	Fess Teklehaimanot
CHECKED	Stephen M. Ryan
DRAWN	h.t. duong
CHECKED	FT/SMR

EXAMINED	Thomas J. Domagala	November 24, 2010
PASSED	Ralph E. Anderson	

*Tilt #9 b₁₀₁ (E) bars as required to maintain clearance.
**Spaced between a₁₀₀ (E) & a₁₀₂ (E) bars, typ. ea. parapet.

BRIDGE APPROACH SLAB DETAILS
STRUCTURE NO. 034-0522

SHEET NO. 13 23 SHEETS	F.A.P. RTE.	SECTION	COUNTY	TOTAL SHEETS	SHEET NO.
	506	123B-1	HANCOCK	47	70
CONTRACT NO. 72992					
ILLINOIS FED. AID PROJECT					