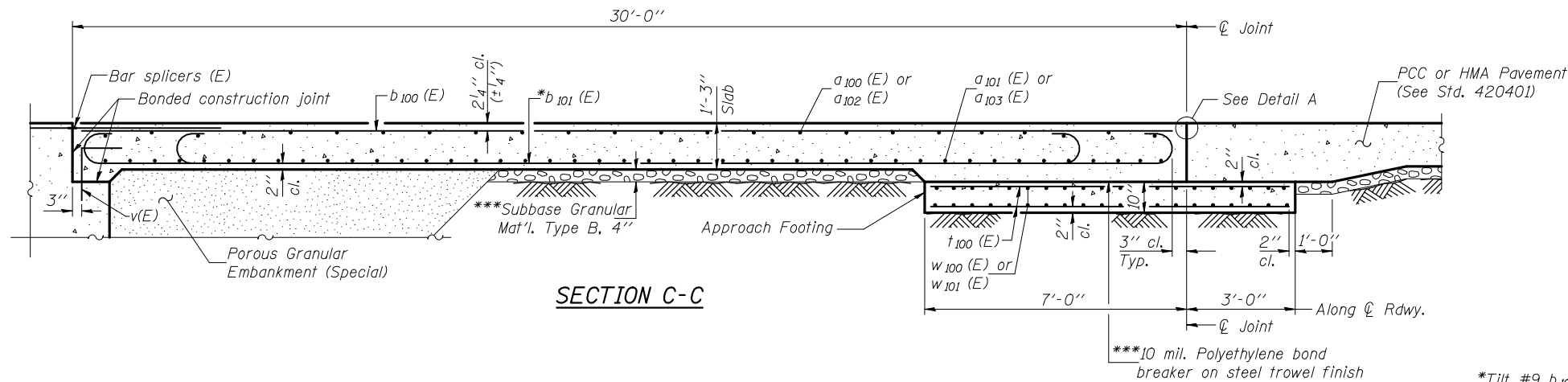


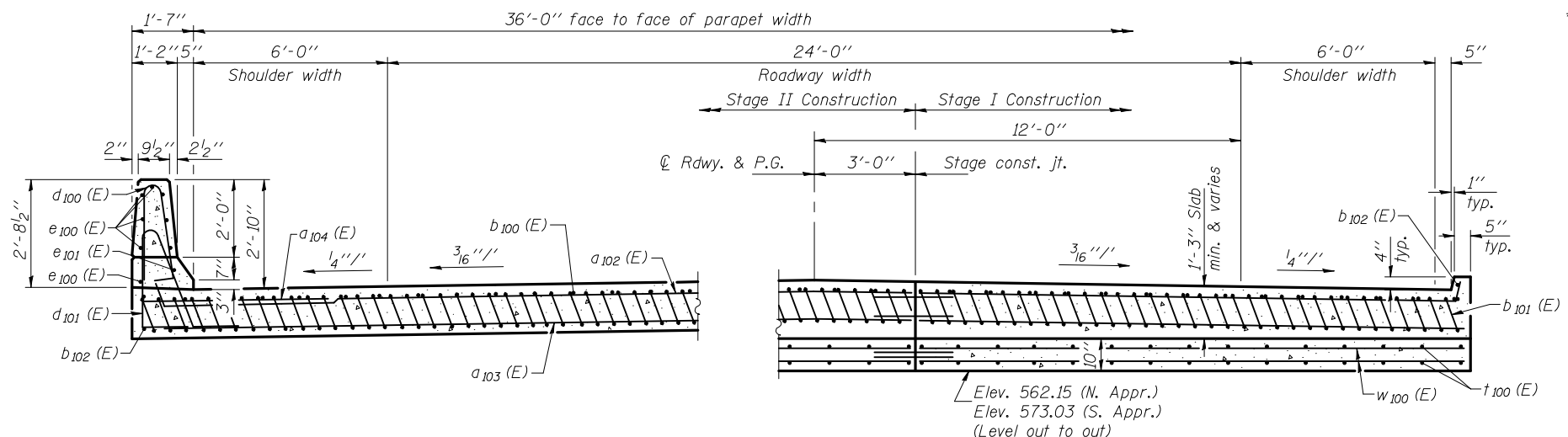
STATE OF ILLINOIS  
DEPARTMENT OF TRANSPORTATION

Notes:

See sheet 13 of 23 for Detail A and View B-B.  
Approach slab and parapet concrete shall be paid for as Concrete Superstructure.  
Approach footing concrete shall be paid for as Concrete Structures.  
Reinforcement shall be paid for as Reinforcement Bars, Epoxy Coated.  
For v(E) bar details, see sheet 11 of 23.  
The approach footing maximum applied service bearing pressure (Qmax) = 2.0 ksf.  
For bar splicer details, see sheet 20 of 23.  
Cost of excavation for approach footing included with Concrete Structures.  
For Porous Granular Embankment (Special) and drainage treatment details, see sheet 2 of 23.  
For additional parapet details, see sheet 11 of 23.



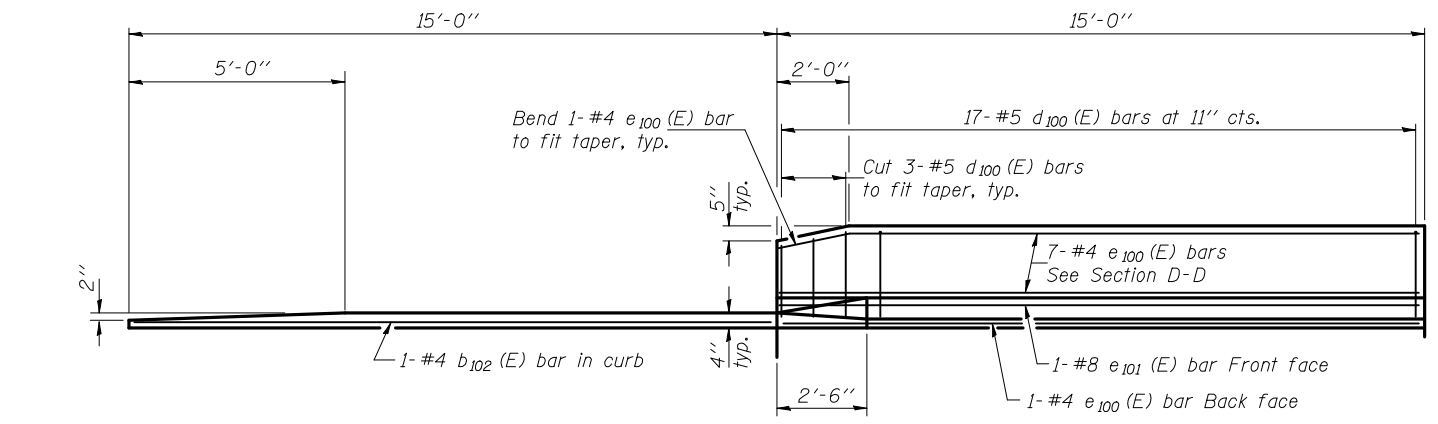
SECTION C-C



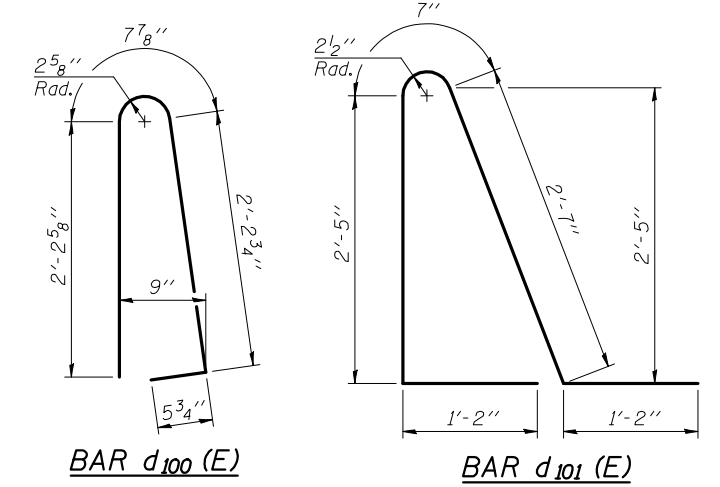
NEAR ABUTMENT

SECTION D-D

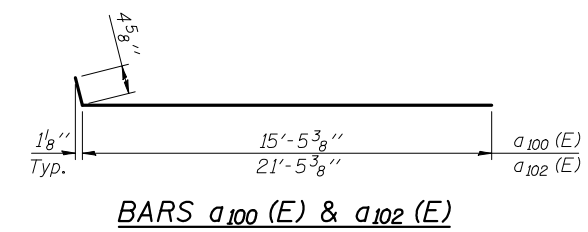
AT APPROACH FOOTING



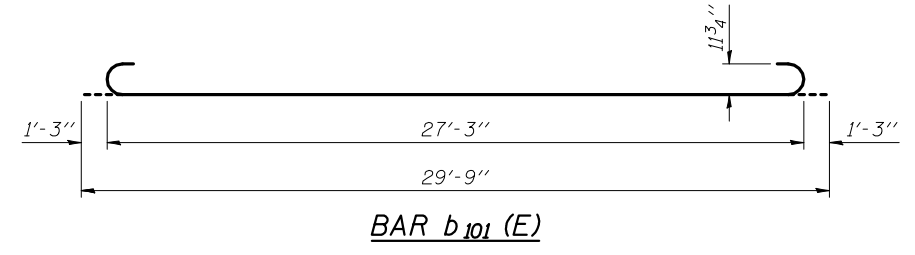
VIEW E-E



\*Tilt #9 b101(E) bars as required to maintain clearance.  
\*\*\*Cost included with Concrete Superstructure.



BARS a100(E) & a102(E)



BAR b101(E)

TWO APPROACHES  
BILL OF MATERIAL

Bar	No.	Size	Length	Shape
a100(E)	50	#4	15'-10"	—
a101(E)	92	#5	15'-7"	—
a102(E)	50	#4	21'-10"	—
a103(E)	92	#5	21'-7"	—
a104(E)	48	#6	6'-6"	—
b100(E)	76	#4	29'-8"	—
b101(E)	180	#9	29'-9"	—
b102(E)	8	#4	14'-8"	—
d100(E)	68	#5	5'-7"	—
d101(E)	68	#5	7'-11"	—
e100(E)	32	#4	14'-8"	—
e101(E)	4	#8	14'-8"	—
t100(E)	160	#4	9'-8"	—
w100(E)	80	#5	15'-7"	—
w101(E)	80	#5	21'-7"	—
Concrete Superstructure		Cu. Yd.	123.6	
Concrete Structures		Cu. Yd.	23.4	
Reinforcement Bars, Epoxy Coated		Pound	30650	

BRIDGE APPROACH SLAB DETAILS  
STRUCTURE NO. 034-0522

DESIGNED	Fess Teklehaimanot
CHECKED	Stephen M. Ryan
DRAWN	h.t. duong
CHECKED	FT/SMR

EXAMINED	Thomas J. Domagalick ENGINEER OF BRIDGE DESIGN
PASSED	Ralph E. Anderson ENGINEER OF BRIDGES AND STRUCTURES

SHEET NO. 14 23 SHEETS	F.A.P. RTE.	SECTION	COUNTY	TOTAL SHEETS	SHEET NO.
	506	123B-1	HANCOCK	48	70
CONTRACT NO. 72992					
ILLINOIS FED. AID PROJECT					