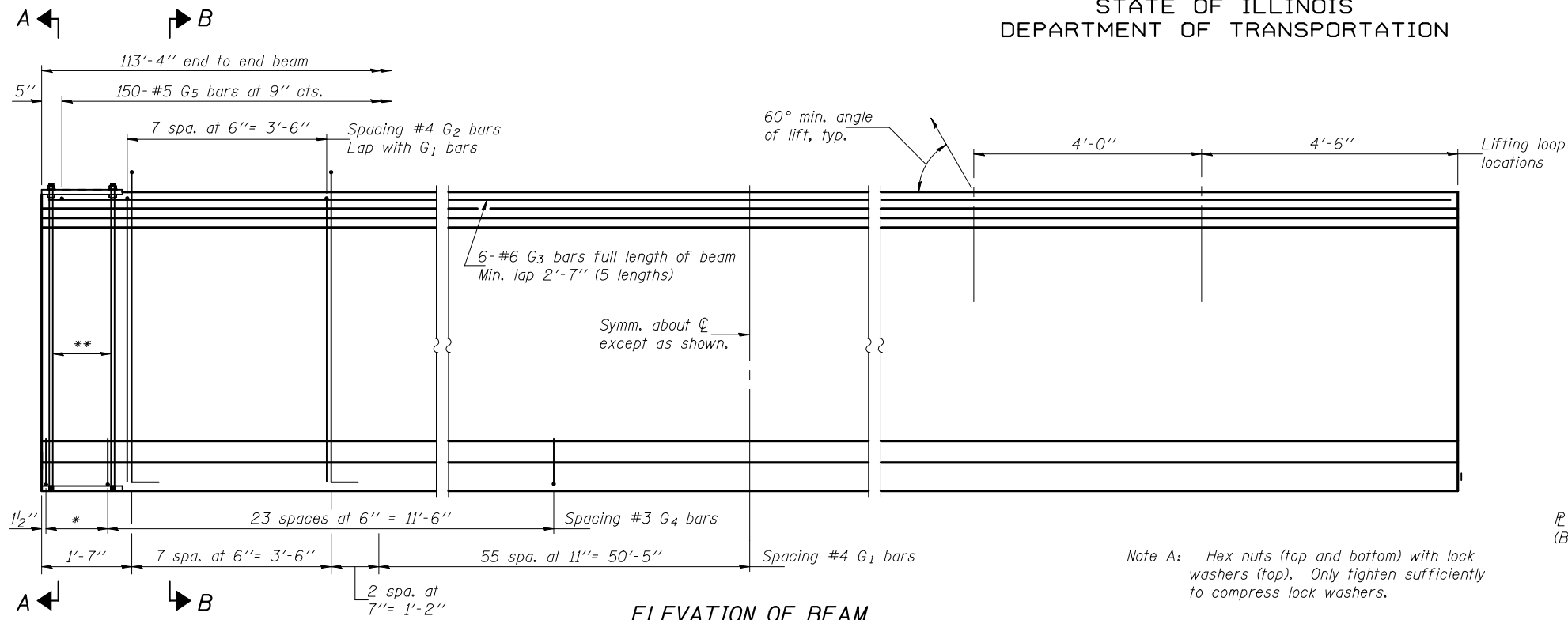


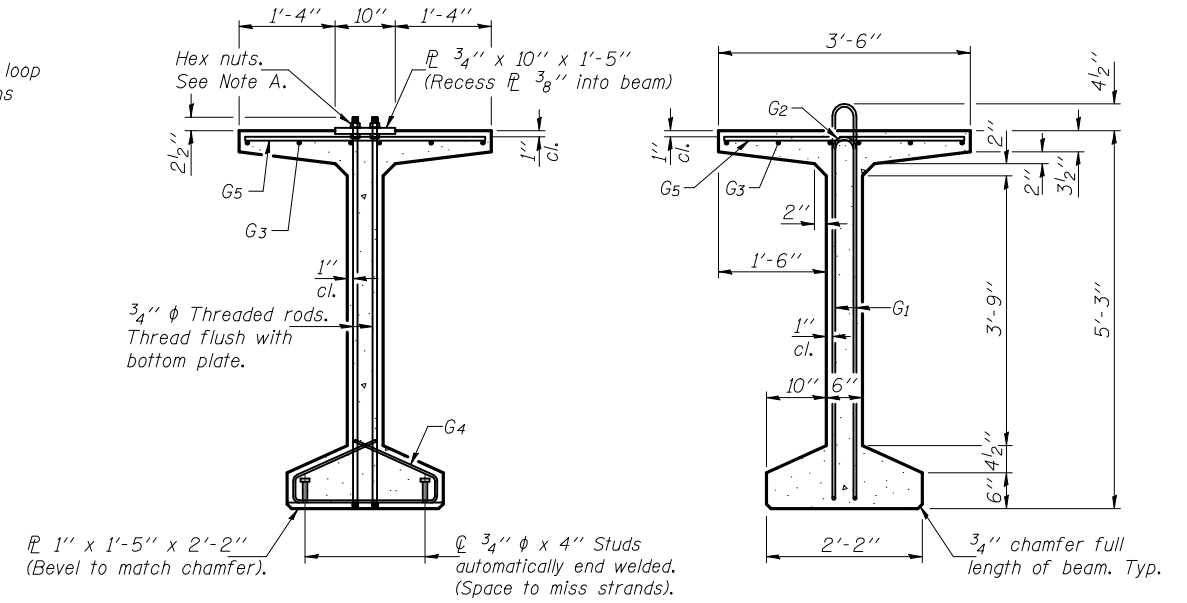
STATE OF ILLINOIS  
DEPARTMENT OF TRANSPORTATION



**ELEVATION OF BEAM**  
(Showing reinforcement & dimensions)

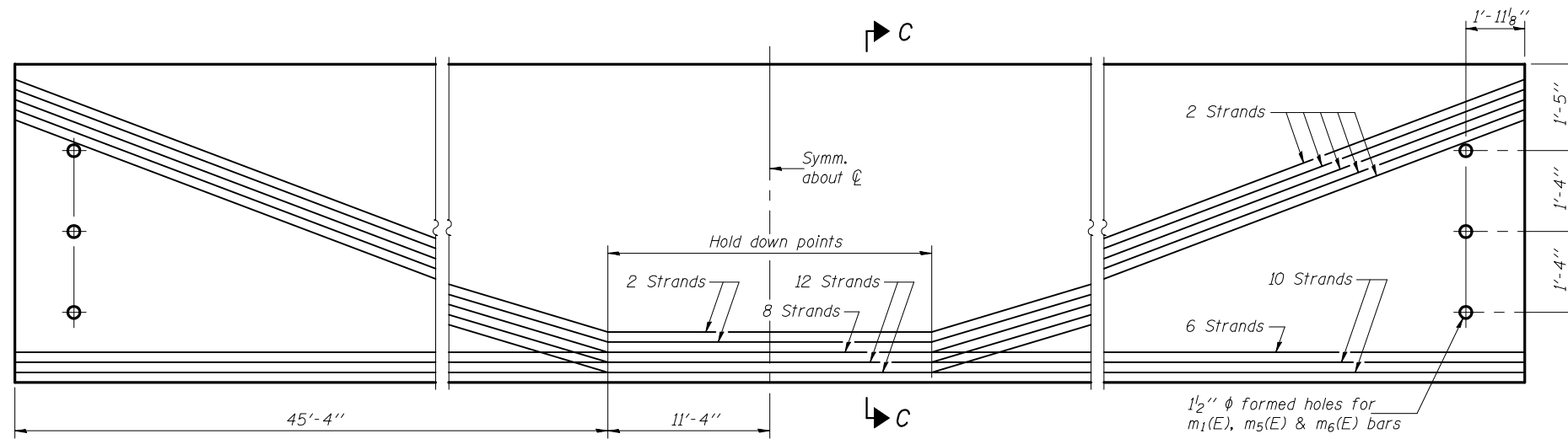
\*4 spaces at 3/4" = 1'-1"  
\*\*5-3/4" φ threaded dowel rods at 3/4" cts., each face

Note A: Hex nuts (top and bottom) with lock washers (top). Only tighten sufficiently to compress lock washers.

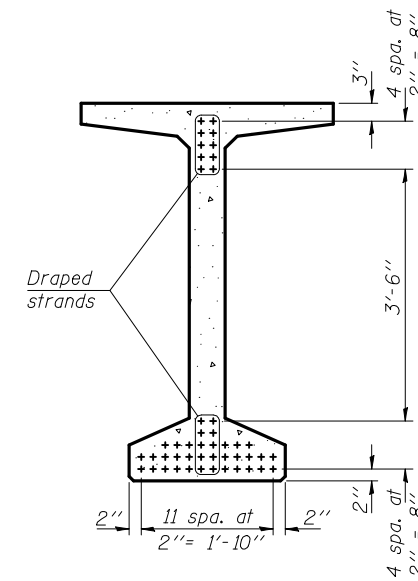


**SECTION A-A**

**SECTION B-B**



**ELEVATION OF BEAM**  
(Showing prestressing steel)



**SECTION C-C**

**\*\*\*BAR LIST  
ONE BEAM ONLY**

Bar	No.	Size	Length	Shape
G1	129	#4	11'-11"	∩ L
G2	16	#4	10'-2"	∩
G3	30	#6	24'-8"	—
G4	56	#3	4'-11"	∩
G5	150	#5	3'-4"	—

\*\*\*For information only

Notes: See sheet 17 of 23 for additional details and Bill of Material.  
Required release strength,  $f'_{ci}$ , shall be 6000 psi.

DESIGNED	Fess Teklehaimanot
CHECKED	Stephen M. Ryan
DRAWN	h.t. duong
CHECKED	FT/SMR

EXAMINED	Thomas J. Domagalick ENGINEER OF BRIDGE DESIGN
PASSED	Ralph E. Anderson ENGINEER OF BRIDGES AND STRUCTURES

November 24, 2010

**63" PPC BULB T-BEAM  
STRUCTURE NO. 034-0522**

SHEET NO. 16 23 SHEETS	F.A.P. RTE.	SECTION	COUNTY	TOTAL SHEETS	SHEET NO.
	506	123B-1	HANCOCK	50	70
CONTRACT NO. 72992					
ILLINOIS FED. AID PROJECT					