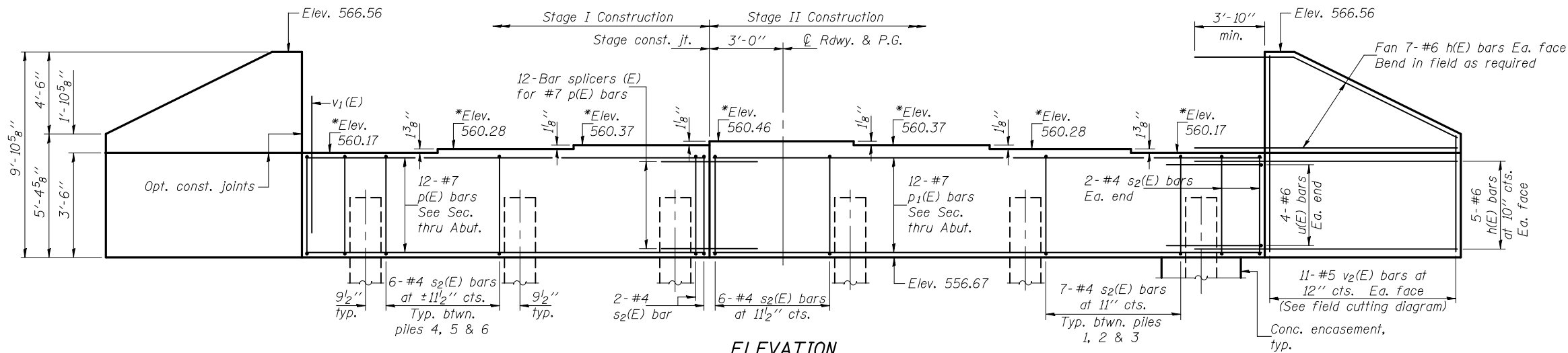


STATE OF ILLINOIS
DEPARTMENT OF TRANSPORTATION



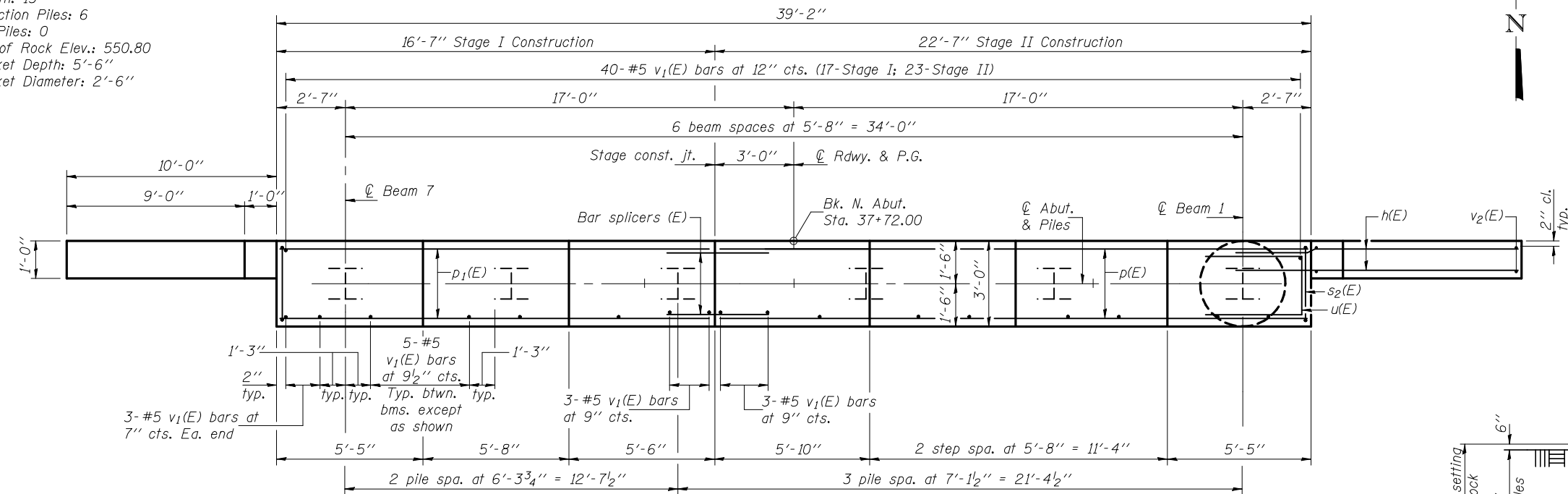
ELEVATION

(Looking north)

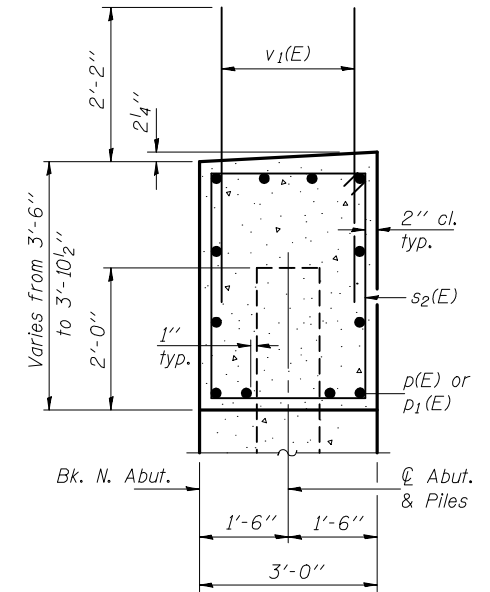
*Elevation are taken at back of abutment.

PILE DATA

Type: Steel HP14x89
Nominal Required Bearing: Set in Rock
Factored Resistance Available: 352 Kips
Est. Length: 13'
No. Production Piles: 6
No. Test Piles: 0
Est. Top of Rock Elev.: 550.80
Rock Socket Depth: 5'-6"
Rock Socket Diameter: 2'-6"



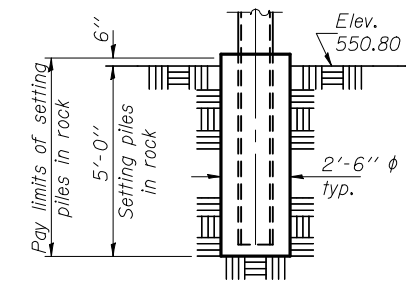
PLAN



SEC. THRU ABUT.

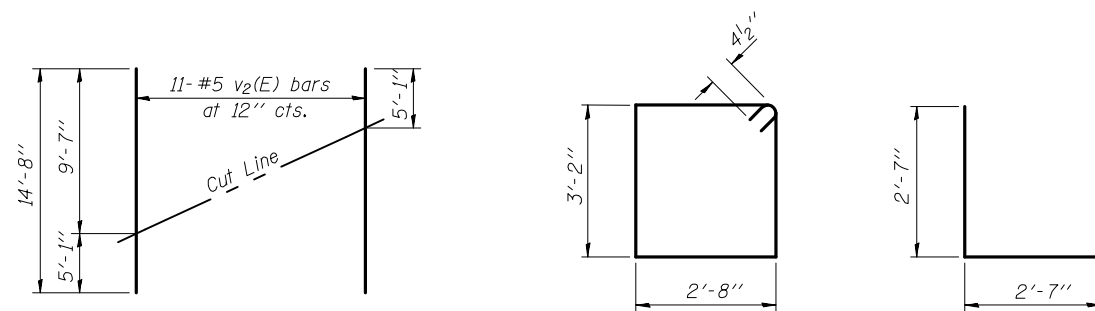
BILL OF MATERIAL

Bar	No.	Size	Length	Shape
h(E)	24	#6	17'-11"	—
p(E)	12	#7	16'-3"	—
p1(E)	12	#7	22'-3"	—
s2(E)	38	#4	12'-5"	□
u(E)	8	#6	7'-9"	□
v1(E)	77	#5	4'-4"	—
v2(E)	22	#5	14'-8"	—
Structure Excavation		Cu. Yd.	184.5	
Concrete Structures		Cu. Yd.	22.5	
Reinforcement Bars, Epoxy Coated		Pound	2680	
Furnishing Steel Piles HP14x89		Foot	78	
Setting Piles in Rock		Each	6	
Concrete Encasement		Cu. Yd.	3.3	



SETTING PILES IN ROCK DETAIL

Notes: Pour steps monolithically with cap.
For details of piles and concrete encasement, see sheet 21 of 23.
For details of bar splicers, see sheet 20 of 23.



FIELD CUTTING DIAGRAM

Order v2(E) full length. Cut as shown and use remainder of bars in opposite face.

BAR s2(E)

BAR u(E)

DESIGNED	Fess Teklehaimanot
CHECKED	Stephen M. Ryan
DRAWN	h.t. duong
CHECKED	FT/SMR

EXAMINED	Thomas J. Domagala	November 24, 2010
PASSED	Ralph E. Anderson	

SHEET NO. 18 23 SHEETS	F.A.P. RTE.	SECTION	COUNTY	TOTAL SHEETS	SHEET NO.
	506	123B-1	HANCOCK	52	70
CONTRACT NO. 72992					
ILLINOIS FED. AID PROJECT					

**NORTH ABUTMENT
STRUCTURE NO. 034-0522**