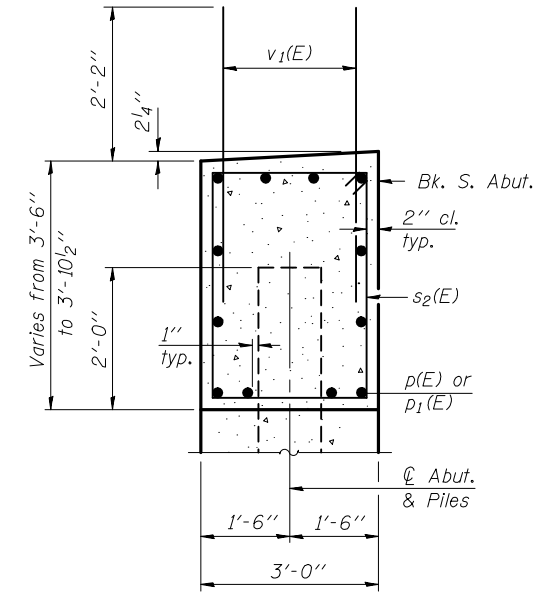
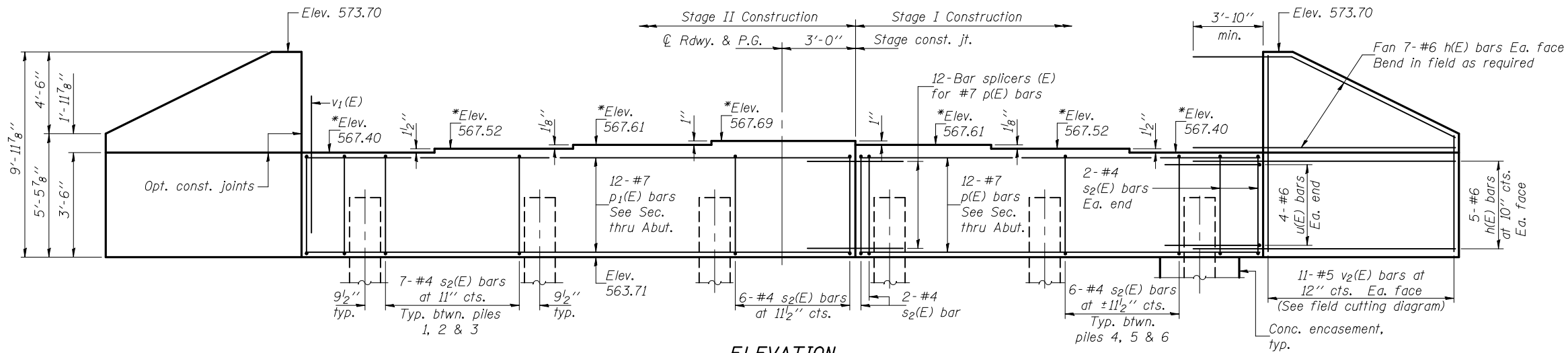
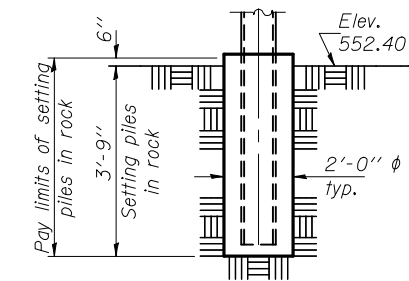
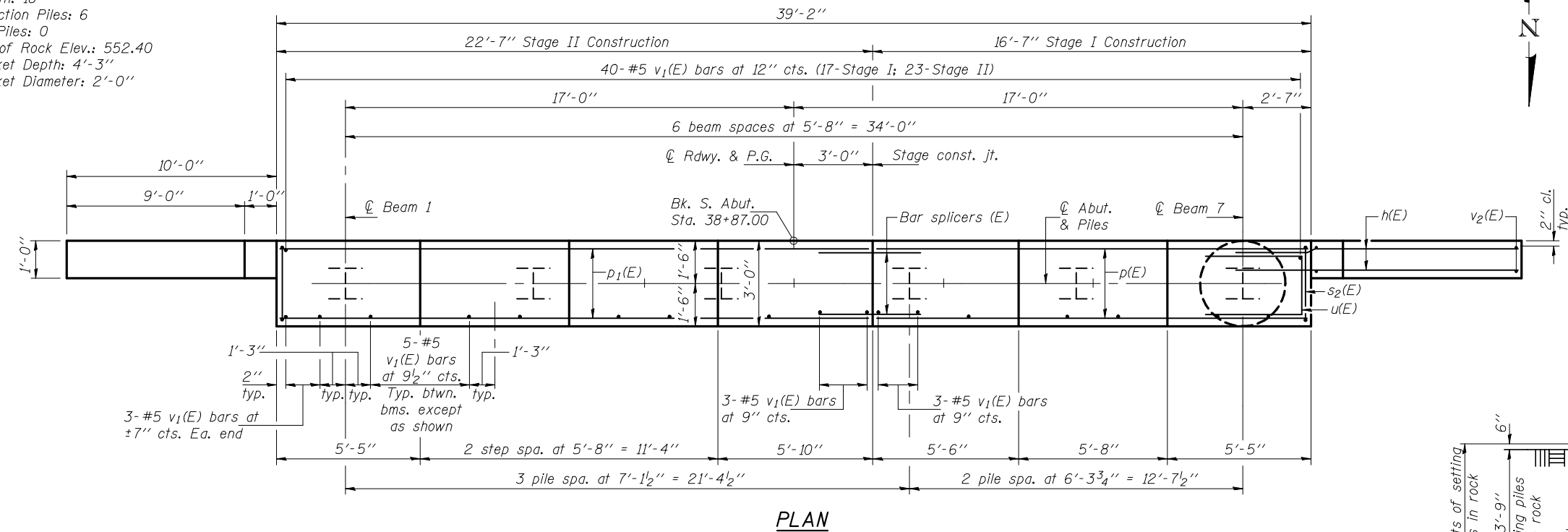


STATE OF ILLINOIS
DEPARTMENT OF TRANSPORTATION



PILE DATA

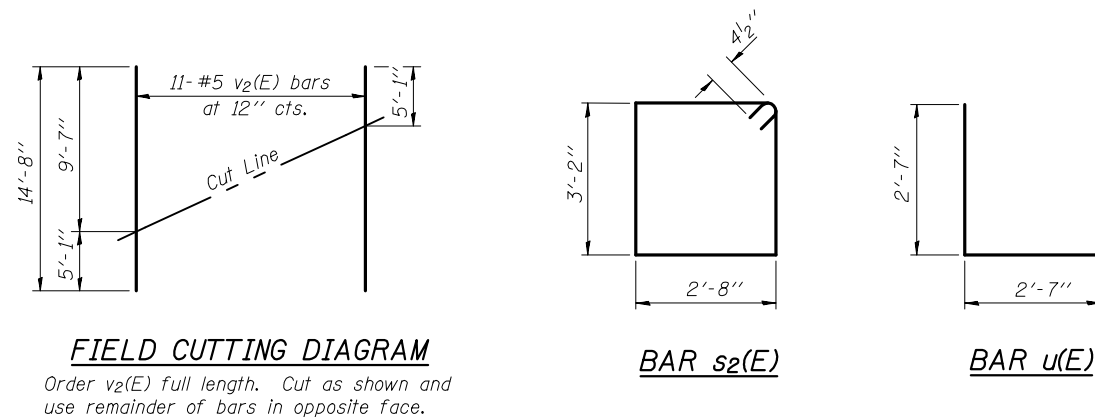
Type: Steel HP14x89
Nominal Required Bearing: Set in Rock
Factored Resistance Available: 352 Kips
Est. Length: 18'
No. Production Piles: 6
No. Test Piles: 0
Est. Top of Rock Elev.: 552.40
Rock Socket Depth: 4'-3"
Rock Socket Diameter: 2'-0"



BILL OF MATERIAL

Bar	No.	Size	Length	Shape
h(E)	24	#6	17'-11"	—
p(E)	12	#7	16'-3"	—
p ₁ (E)	12	#7	22'-3"	—
s ₂ (E)	38	#4	12'-5"	□
u(E)	8	#6	7'-9"	□
v ₁ (E)	77	#5	4'-4"	—
v ₂ (E)	22	#5	14'-8"	—
Structure Excavation	Cu. Yd.		190.4	
Concrete Structures	Cu. Yd.		22.6	
Reinforcement Bars, Epoxy Coated	Pound		2680	
Furnishing Steel Piles HP14x89	Foot		108	
Setting Piles in Rock	Each		6	
Concrete Encasement	Cu. Yd.		3.3	

Notes: Pour steps monolithically with cap.
For details of piles and concrete encasement, see sheet 21 of 23.
For details of bar splicer, see sheet 20 of 23.



DESIGNED	Fess Teklehaimanot
CHECKED	Stephen M. Ryan
DRAWN	h.t. duong
CHECKED	FT/SMR

EXAMINED	Thomas J. Domagala	November 24, 2010
PASSED	Ralph E. Anderson	

SHEET NO. 19 23 SHEETS	F.A.P. RTE.	SECTION	COUNTY	TOTAL SHEETS	SHEET NO.
	506	123B-1	HANCOCK	53	70
CONTRACT NO. 72992					
ILLINOIS FED. AID PROJECT					

**SOUTH ABUTMENT
STRUCTURE NO. 034-0522**