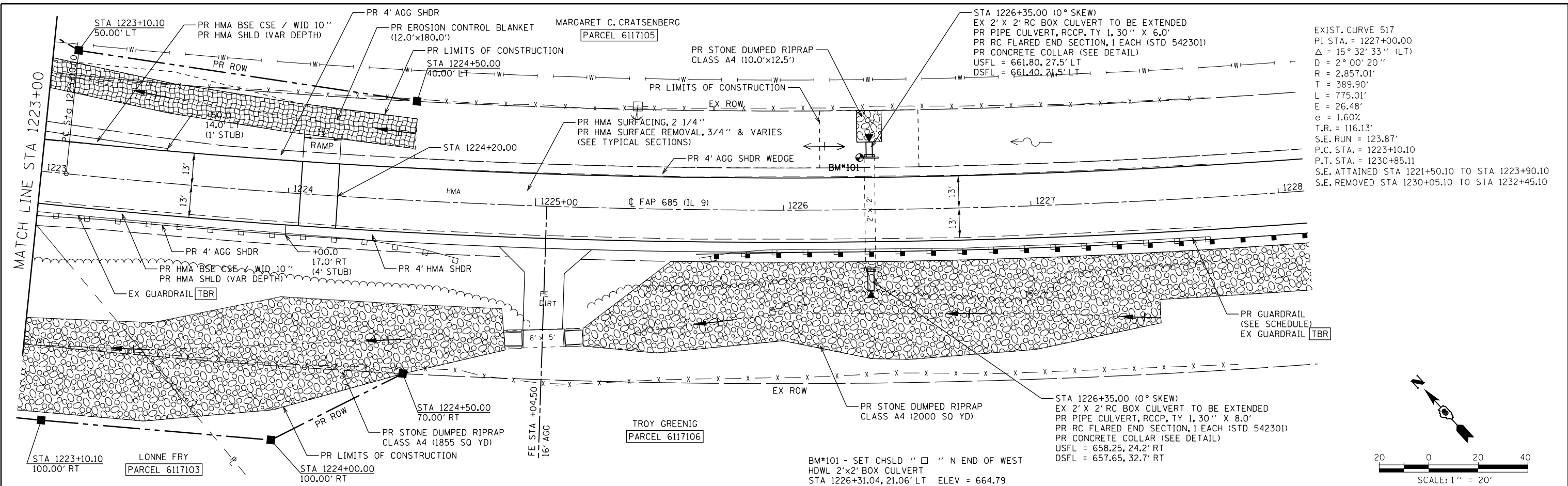
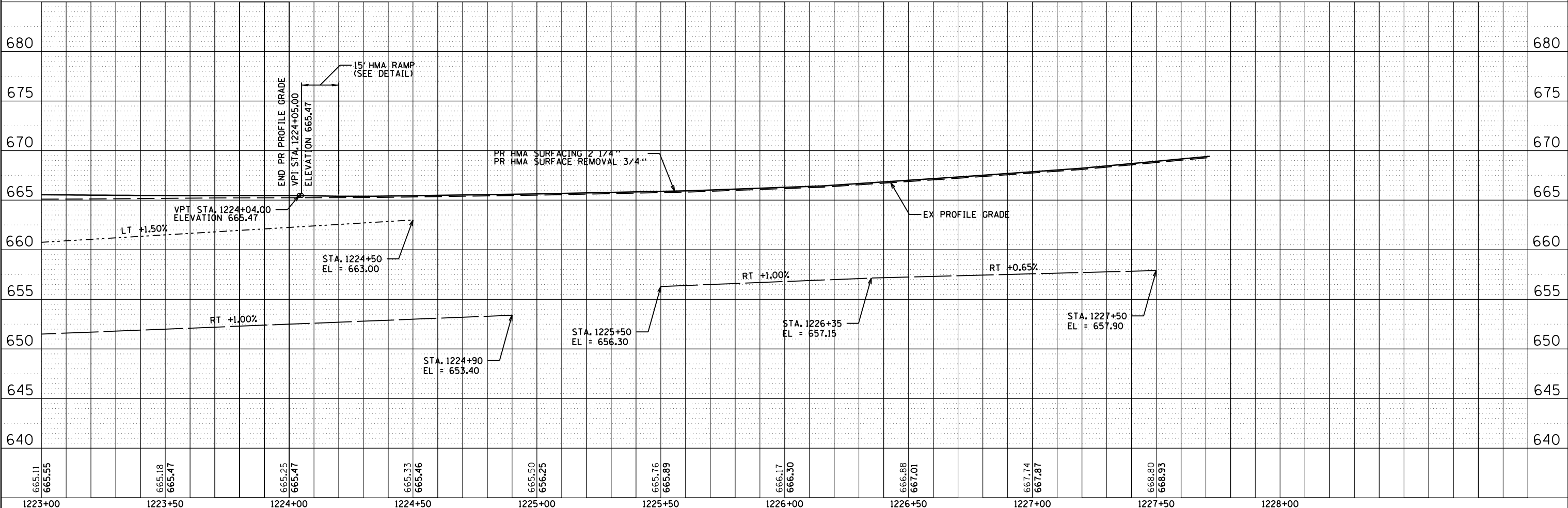
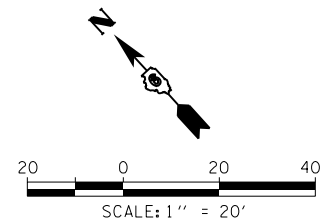


DATE	
BY	
PLAN	
SURVEYED	
PLOTTED	
CHECKED	
NOTE BOOK	
NO.	

DATE	
BY	
PROFILE	
SURVEYED	
PLOTTED	
CHECKED	
NOTE BOOK	
NO.	



EXIST. CURVE 517  
 P1 STA. = 1227+00.00  
 $\Delta = 15^\circ 32' 33''$  (LT)  
 $D = 2^\circ 00' 20''$   
 $R = 2,857.01'$   
 $T = 389.90'$   
 $L = 775.01'$   
 $E = 26.48'$   
 $e = 1.60\%$   
 $T.R. = 116.13'$   
 $S.E. RUN = 123.87'$   
 $P.C. STA. = 1223+10.10$   
 $P.T. STA. = 1230+85.11$   
 $S.E. ATTAINED STA 1221+50.10 TO STA 1223+90.10$   
 $S.E. REMOVED STA 1230+05.10 TO STA 1232+45.10$



665.11	665.55	665.18	665.47	665.25	665.47	665.33	665.46	665.50	656.25	665.76	665.89	666.17	666.30	666.88	667.01	667.74	667.87	668.80	668.93
1223+00	1223+50	1224+00	1224+50	1225+00	1225+50	1226+00	1226+50	1227+00	1227+50	1228+00									

FILE NAME = c:\pwork\pwork\loughlinr1\0244977\0672805-shr-Plan03.dgn

USER NAME = loughlinr1	DESIGNED -	REVISED -
PLOT SCALE = 40.0000' / in.	CHECKED -	REVISED -
PLOT DATE = Nov-03-2010 11:34:31AM	DRAWN -	REVISED -
	CHECKED -	REVISED -

STATE OF ILLINOIS  
 DEPARTMENT OF TRANSPORTATION

PLAN AND PROFILE SHEET  
 SCALE: 1"=20' SHEET NO. 4 OF 4 SHEETS STA. 1223+000 STA. 1228+00

F.A.P. R.T.E.	SECTION	COUNTY	TOTAL SHEETS	SHEET NO.
685	(117,118)RS-4,119RS-1; 118B-1	HANCOCK	101	35
CONTRACT NO. 72B05				
FED. ROAD DIST. NO. ILLINOIS FED. AID PROJECT				