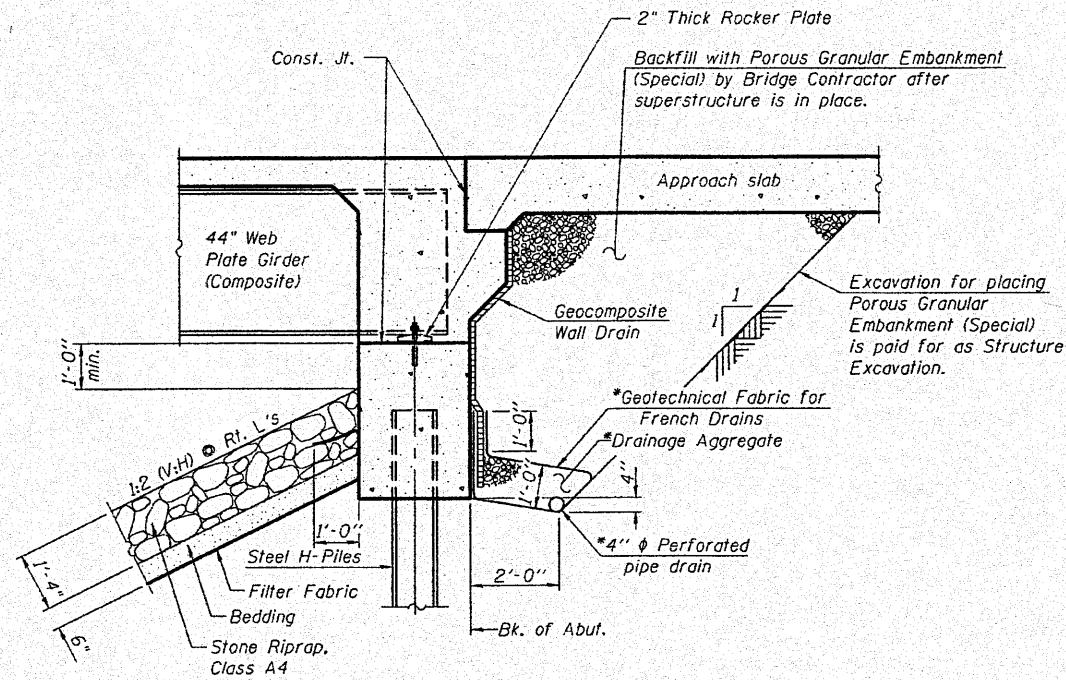


11/22/2010 10:58:05 AM

P:\07f11es\090044\Work Order 1 (IL 9 over LaHarpe Creek)\Bridge Plans\GPE & GENERAL DETAILS.dgn

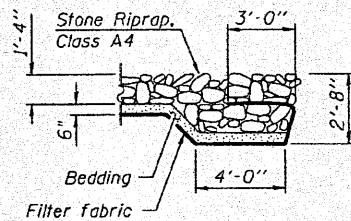


**SECTION THRU INTEGRAL ABUTMENT**  
(Horiz. dim. @ Rt. L's)

\*Included in the cost of Pipe Underdrains for Structures.

**Note:**

All drainage system components shall extend to 2'-0" from the end of each wingwall except an outlet pipe shall extend until intersecting with the side slopes. The pipes shall drain into concrete headwalls. (See Article 601.05 of the Standard Specifications and Highway Standard 601101).



**SECTION A-A**

STATION 1219+54.00  
BUILT 201. BY  
STATE OF ILLINOIS  
F.A.P. RT. 685 SEC. 118B-1  
LOADING HL-93  
STRUCTURE NO. 034-0528

**NAME PLATE**  
See Std. 515001

**GENERAL NOTES**

Fasteners shall be AASHTO M164 Type 1, mechanically galvanized bolts in painted areas and M164 Type 3 in unpainted areas. Bolts 3/8" φ, holes 1/2" φ, unless otherwise noted.  
Calculated weight of Structural Steel = 145,850 Pounds.  
All structural steel shall be AASHTO M270 Grade 50W. All structural steel shall be cleaned as specified in the Special Provision for "Surface Preparation and Painting Requirements for Weathering Steel".  
No field welding is permitted except as specified in the contract documents.  
Reinforcement bars shall conform to the requirements of ASTM A 706 Gr 60. See Special Provisions.  
Reinforcement bars designated (E) shall be epoxy coated.  
Structural steel shall only be painted for a distance equal to the depth of embedment into the concrete cap plus 3 inches. Painted areas shall be primed in the shop with a Department approved zinc rich primer. Field painting will not be required.  
Layout of the slope protection system may be varied in the field to suit ground conditions as directed by the Engineer.  
The embankment configuration shown shall be the minimum that must be placed and compacted prior to construction of the abutments.  
The Contractor is advised that the existing PPC Deck beams are in a deteriorated condition with reduced load carrying capacity. It is the Contractor's responsibility to account for the condition of the beams when developing construction procedures for removal and replacement of the superstructure.  
If the Contractor's procedures for existing deck beam removal involves placement of heavy equipment on the existing deck beams, a detailed procedure shall be submitted to the Engineer for approval. The procedure shall include calculations, sealed by an Illinois Licensed Structural Engineer, verifying the structural adequacy of the beams for the proposed loads. Cost included with Removal of Existing Structures.

**Current Ratings on File for Existing Structure**

Inventory = HS 26.5  
Operating = HS 43.8  
Live Load Restrictions: No

Inventory and Operating Ratings and Live Load Restrictions are provided for information only. Inventory and Operating Ratings are based on HS Loading and configuration. Live Load Restrictions are based on Illinois legal loads and configurations. The Ratings and Live Load Restrictions are not necessarily representative of capacities to support the Contractor's equipment.

**TOTAL BILL OF MATERIAL**

ITEM	UNIT	SUPER	SUB	TOTAL
Porous Granular Embankment, Special	Cu. Yd.		170	170
Stone Riprap, Class A4	Sq. Yd.		2,234	2,234
Filter Fabric	Sq. Yd.		2,234	2,234
Removal of Existing Structures No. 1	Each			1
Structure Excavation	Cu. Yd.		312	312
Floor Drains	Each	12		12
Concrete Structures	Cu. Yd.		63.2	63.2
Concrete Superstructure	Cu. Yd.	283.0		283.0
Bridge Deck Grooving	Sq. Yd.	620		620
Concrete Encasement	Cu. Yd.		5.6	5.6
Protective Coat	Sq. Yd.	777		777
Furnishing and Erecting Structural Steel	L. Sum	1		1
Stud Shear Connectors	Each	1,998		1,998
Reinforcement Bars, Epoxy Coated	Pound	63,520	7,720	71,240
Bar Splicers	Each	639	24	663
Furnishing Steel Piles, HP 12x63	Foot		805	805
Driving Piles	Foot		805	805
Test Pile Steel HP 12x63	Each		2	2
Name Plates	Each	1		1
Anchor Bolts, 1"	Each		24	24
Geocomposite Wall Drain	Sq. Yd.		83	83
Pipe Underdrains for Structures 4"	Foot		166	166
Temporary Soil Retention System	Sq. Ft.		560	560
Asbestos Bearing Pad Removal	Each	22		22

FILE NAME :	USER NAME :	DESIGNED RJP	REVISED -	<b>STATE OF ILLINOIS DEPARTMENT OF TRANSPORTATION</b>	<b>GENERAL DATA STRUCTURE NO. 034-0528</b>	F.A.P. RTE. :	SECTION :	COUNTY :	TOTAL SHEETS :	SHEET NO. :
	CHECKED ADL	REVISED -	685			117.118RS-4.119RS-1; 118B-1	HANCOCK	101	44	
PLT SCALE :	DRAWN RJP	REVISED -	CONTRACT NO. 72B05							
PLT DATE :	CHECKED ADL	REVISED -	ILLINOIS FED. AID PROJECT							
						SHEET NO. 2 OF 23 SHEETS				
						Klingner & Associates P.C.				