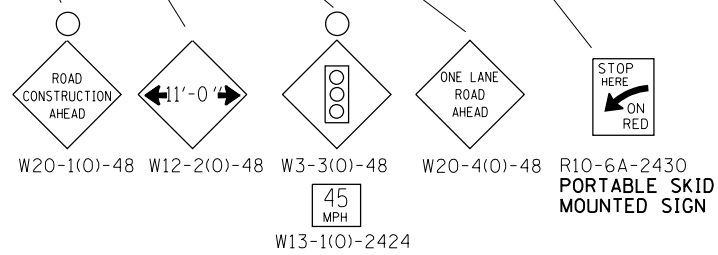
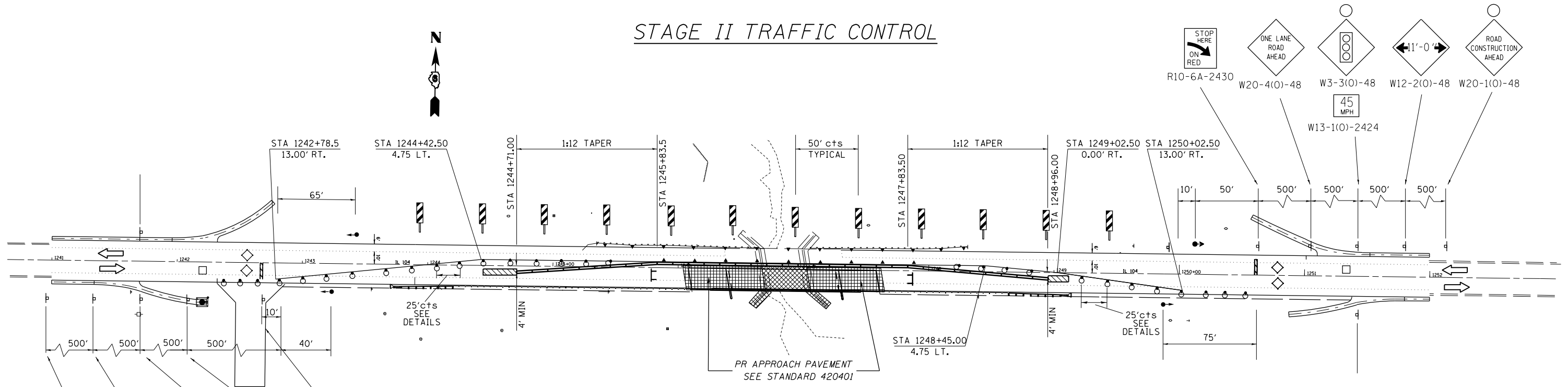
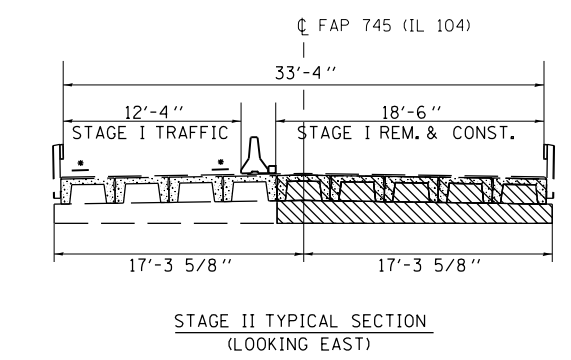
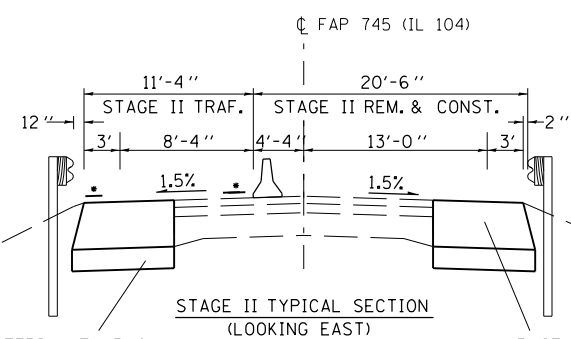


STAGE II TRAFFIC CONTROL



Sequence of Stage II Construction

1. Divert traffic to the Stage II lane.
2. Remove Guardrail RT. Locations are indicated on schedule of quantities.
3. Remove Pavement and Approach Slab RT. Locations are indicated on schedule of quantities.
4. Install Soil Retention System
5. Remove and Replace Structure RT.
6. Construct Approach Pavement, Pavement Connectors, and Ramps RT.
7. Install Guardrail RT.



LEGEND

- PAVEMENT REMOVAL
- IMPACT ATTENUATOR, NARROW
- TEMPORARY BARRIER WALL
- EXISTING STRUCTURE TO BE REMOVED
- HOT-MIX ASPHALT BASE CSE WID, 10"
- DOUBLE VERTICAL PANEL
- SIGN
- N.T.S. - NOT TO SCALE
- INDUCTION LOOP DETECTOR
- TEMPORARY BRIDGE TRAFFIC SIGNALS
- DRUM WITH STEADY BURNING LIGHT
- 24" STOP BAR
- TYPE III BARRICADES
- TYPE C BIDIRECTIONAL REFLECTOR
- STEADY BURNING LIGHTS AND DOUBLE VERTICAL PANELS

FILE NAME =	USER NAME = laughlinr1	DESIGNED -	REVISED -	STATE OF ILLINOIS DEPARTMENT OF TRANSPORTATION	IL 104 OVER GRINDSTONE CREEK STAGE II CONSTRUCTION			F.A.P. RTE.	SECTION	COUNTY	TOTAL SHEETS	SHEET NO.
et:\pw\work\pwidot\laughlinr1\0215213\0672898-Stage Construction.dgn	PLOT SCALE = 80.0000' / in.	DRAWN -	REVISED -					745	107B-1	ADAMS	86	20
PLOT DATE = Oct-14-2010 09:42:39AM	DATE -	CHECKED -	REVISED -					CONTRACT NO. 72B98				
								ILLINOIS FED. AID PROJECT				