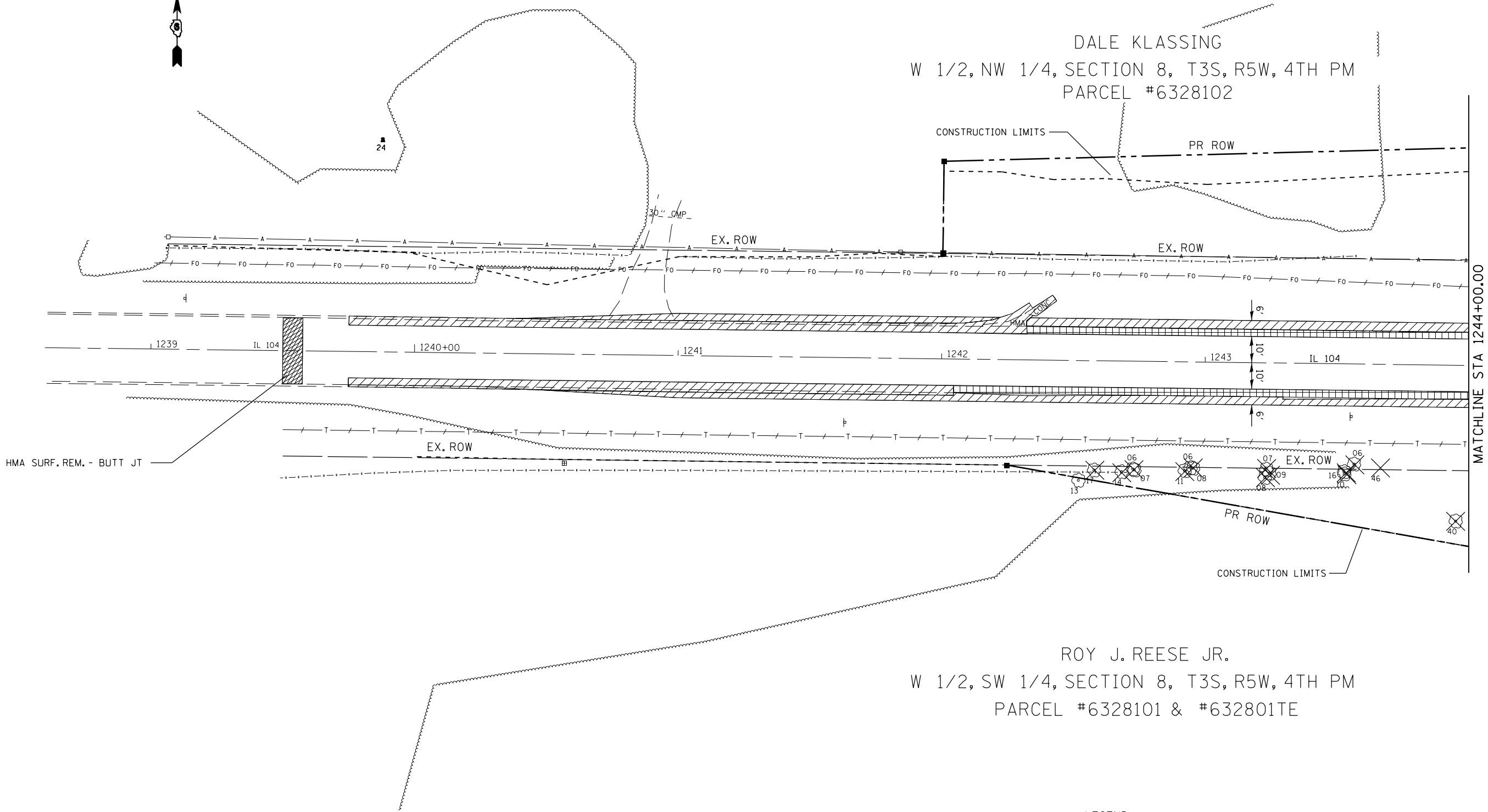


REMOVAL SHEETS

48



DALE KLASSING
W 1/2, NW 1/4, SECTION 8, T3S, R5W, 4TH PM
PARCEL #6328102



ROY J. REESE JR.
W 1/2, SW 1/4, SECTION 8, T3S, R5W, 4TH PM
PARCEL #6328101 & #632801TE

LEGEND

- PAVEMENT REMOVAL
- GUTTER REMOVAL
- EXISTING STRUCTURE TO BE REMOVED
- HOT-MIX ASPHALT BASE CSE WID, 10"
- HMA SURF. REM. - BUTT JT
- GUARDRAIL REMOVAL
- EX ROW MARKER
- PR ROW MARKER
- TREE REMOVAL

FILE NAME =	USER NAME = laughlinr1	DESIGNED -	REVISED -	STATE OF ILLINOIS DEPARTMENT OF TRANSPORTATION	IL 104 OVER GRINDSTONE CREEK REMOVAL SHEETS			F.A.P. RTE.	SECTION	COUNTY	TOTAL SHEETS	SHEET NO.		
		DRAWN -	REVISED -		SCALE:	SHEET NO. OF	SHEETS	STA.	TO STA.	745	107B-1	ADAMS	86	25
		CHECKED -	REVISED -					CONTRACT NO. 72B98			ILLINOIS FED. AID PROJECT			
		DATE -	REVISED -											