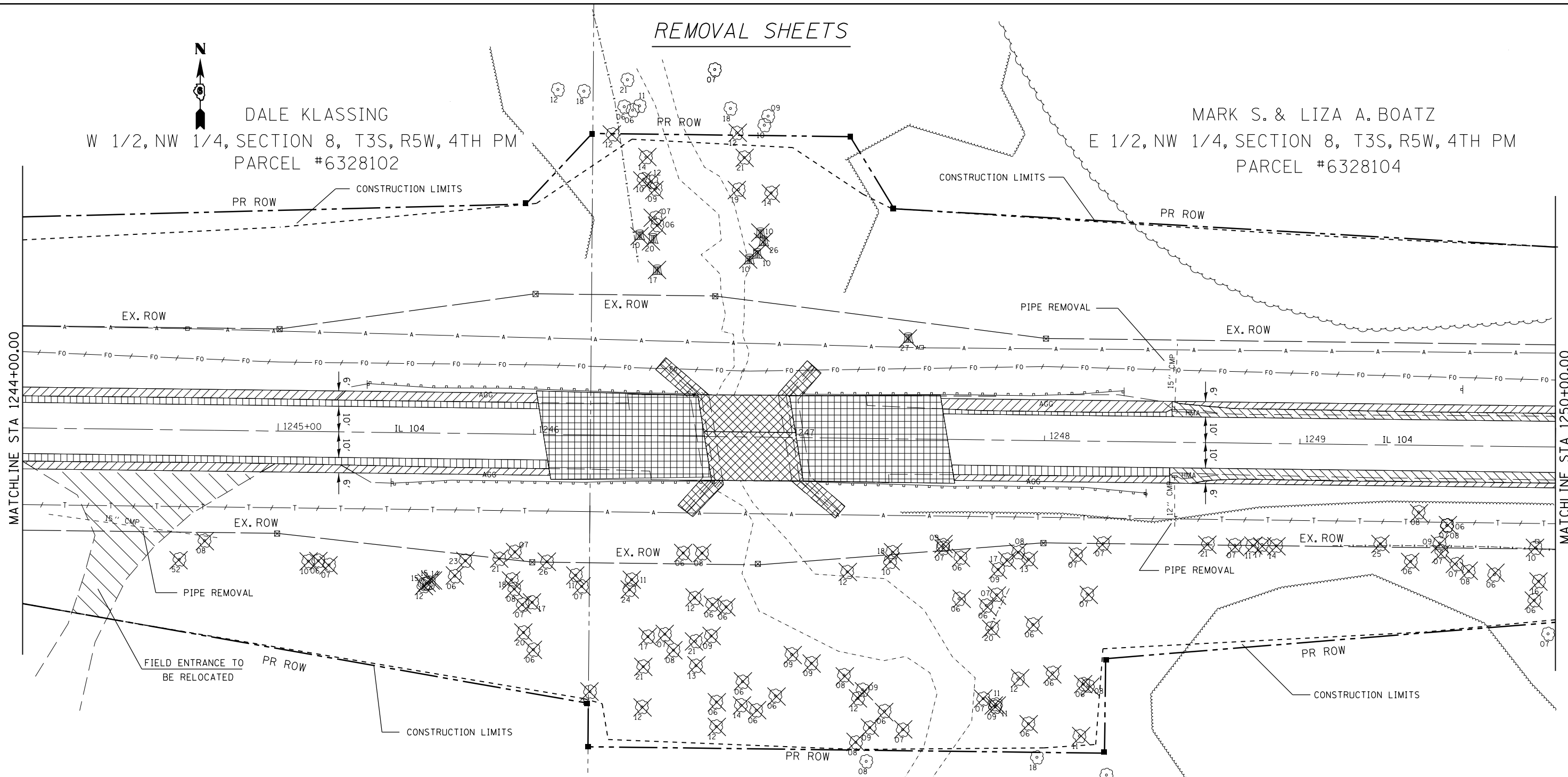


REMOVAL SHEETS

DALE KLASSING
W 1/2, NW 1/4, SECTION 8, T3S, R5W, 4TH PM
PARCEL #6328102

MARK S. & LIZA A. BOATZ
E 1/2, NW 1/4, SECTION 8, T3S, R5W, 4TH PM
PARCEL #6328104



ROY J. REESE JR.
W 1/2, SW 1/4, SECTION 8, T3S, R5W, 4TH PM
PARCEL #6328101 & #632801TE

ERIC D. & VERONICA L. COLE
E 1/2, SW 1/4, SECTION 8, T3S, R5W, 4TH PM
PARCEL #6328103

1/4, 1/4, SECTION LINE

LEGEND

- PAVEMENT REMOVAL
- GUTTER REMOVAL
- EXISTING STRUCTURE TO BE REMOVED
- HOT-MIX ASPHALT BASE CSE WID, 10"
- HMA SURF. REM. - BUTT JT
- GUARDRAIL REMOVAL
- EX ROW MARKER
- PR ROW MARKER
- TREE REMOVAL

FILE NAME = c:\pwwork\pwwork\laughlinr\1\0215213\0672898-shr-rem.dgn	USER NAME = laughlinr1	DESIGNED -	REVISED -	STATE OF ILLINOIS DEPARTMENT OF TRANSPORTATION	IL 104 OVER GRINDSTONE CREEK REMOVAL SHEETS			F.A.P. RTE.	SECTION	COUNTY	TOTAL SHEETS	SHEET NO.
	PLOT SCALE = 40.0000' / in.	CHECKED -	REVISED -					745	107B-1	ADAMS	86	26
PLOT DATE = Oct-14-2010 09:42:45AM	DATE -	REVISED -	REVISED -	SCALE: SHEET NO. OF SHEETS STA. TO STA.			CONTRACT NO. 72B98 ILLINOIS FED. AID PROJECT					