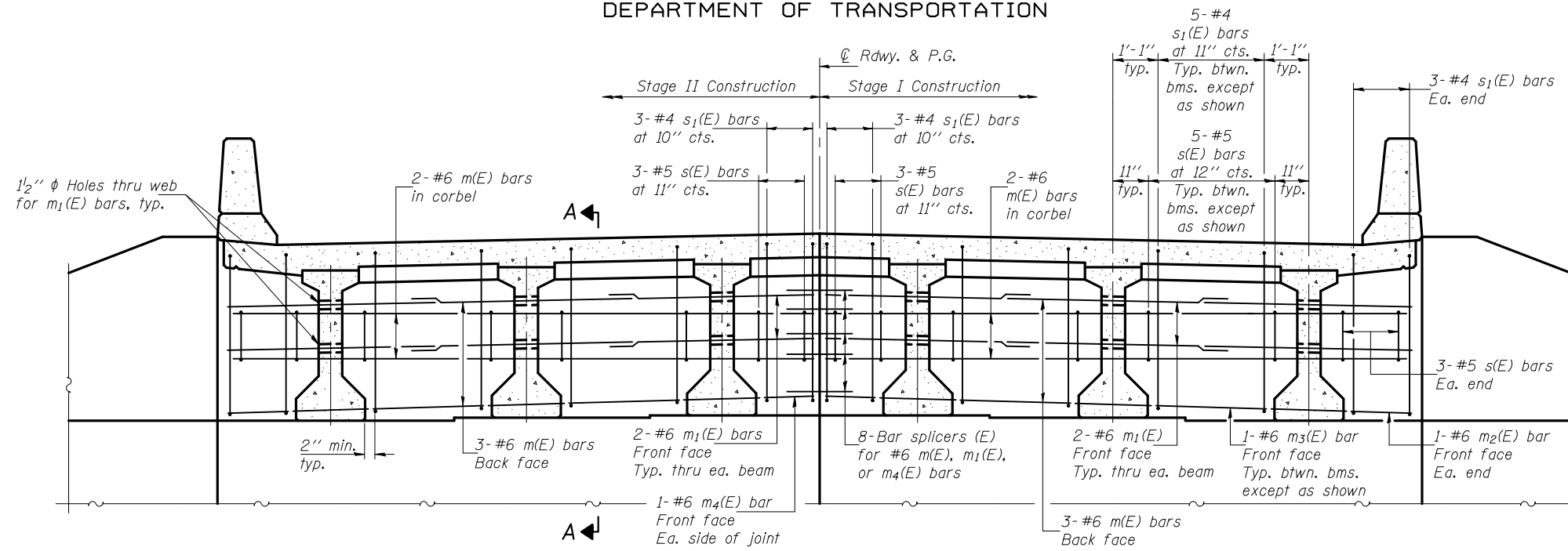
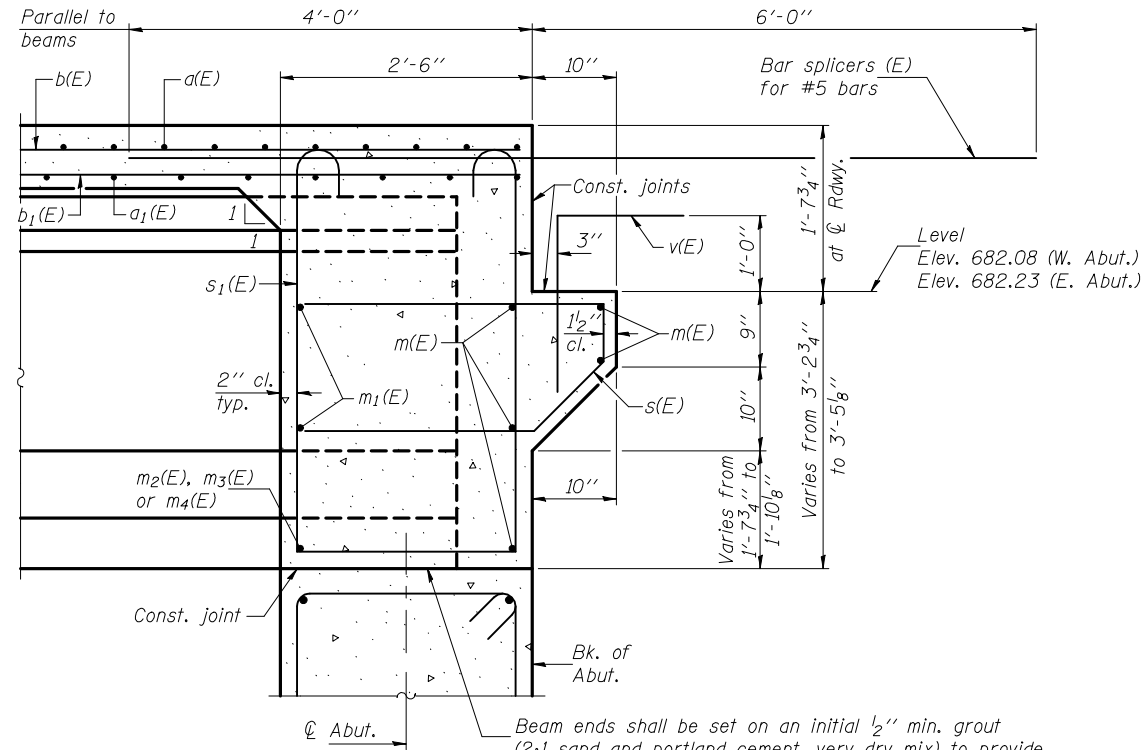


STATE OF ILLINOIS
DEPARTMENT OF TRANSPORTATION



DIAPHRAGM ELEVATION AT ABUTMENT
(Looking East)

Notes:
Reinforcement bars in diaphragm are billed with superstructure on sheet 9 of 21.
Concrete in diaphragm is included with Concrete Superstructure on sheet 9 of 21.
For details of bars s(E) and s₁(E) see sheet 9 of 21.
The s(E) and s₁(E) bars shall be placed parallel to the beams.
Spacing for these bars shall be at right angles to the beams.



SECTION A-A

Dimensions at right angles to abutment, except as shown.

Beam ends shall be set on an initial 1/2" min. grout (2:1 sand and portland cement, very dry mix) to provide full bearing. Any excess grout squeezed out from under the beam shall be removed. Cost included with Concrete Structures.

MIN. BAR LAP
#6 bar = 3'-4"

DESIGNED	Philip E. Coppernoll
CHECKED	Justin T. Belue
DRAWN	h.t. duong
CHECKED	PEC/JTB

December 6, 2010
EXAMINED *Thomas J. Demagala*
PASSED *Ralph E. Anderson*
ENGINEER OF BRIDGES AND STRUCTURES

DIAPHRAGM DETAILS
STRUCTURE NO. 001-0507

SHEET NO. 10 21 SHEETS	F.A.P. RTE. 745	SECTION 107B-1	COUNTY ADAMS	TOTAL SHEETS 86	SHEET NO. 44
	CONTRACT NO. 72B98			FED. ROAD DIST. NO. - ILLINOIS FED. AID PROJECT	