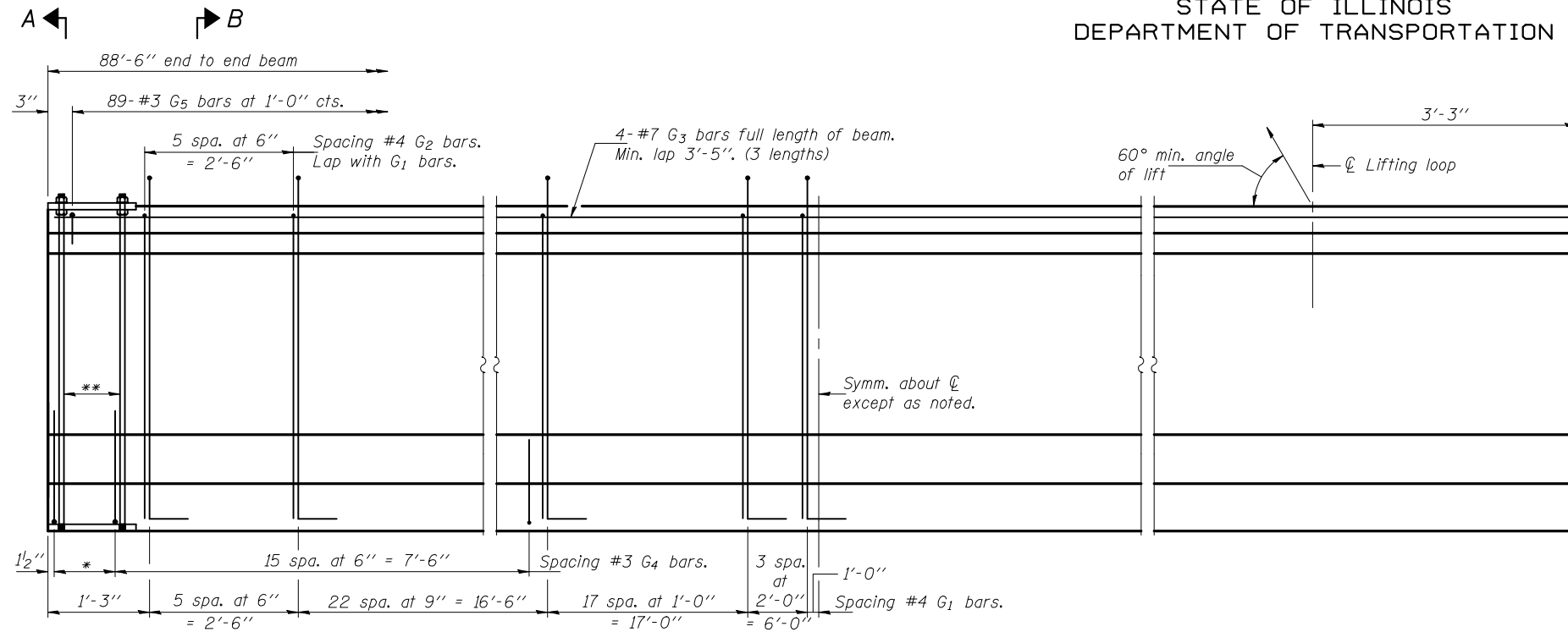


STATE OF ILLINOIS
DEPARTMENT OF TRANSPORTATION

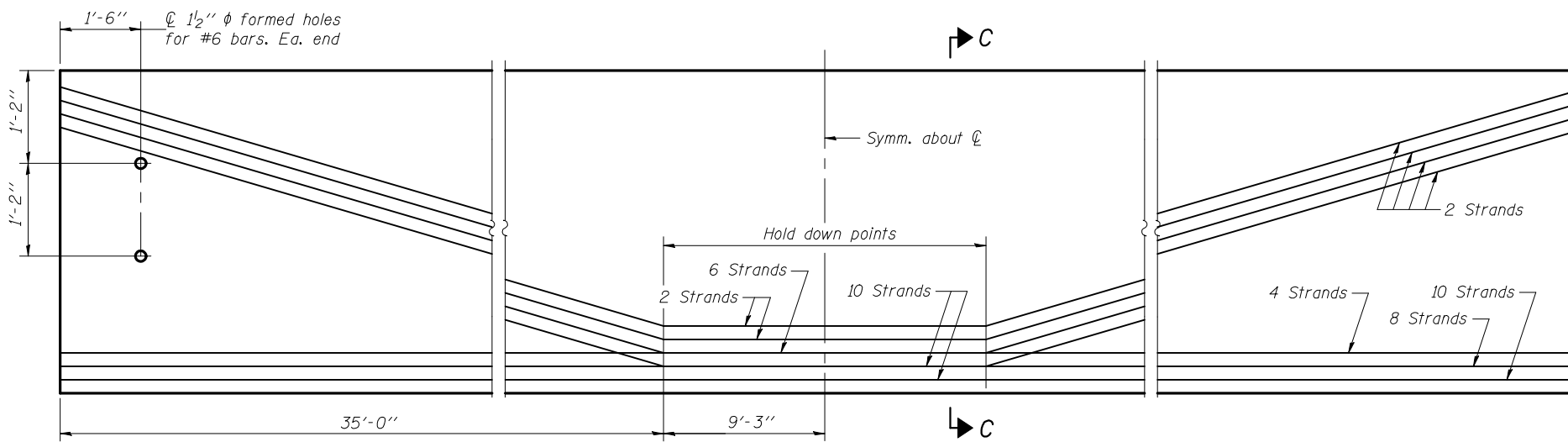
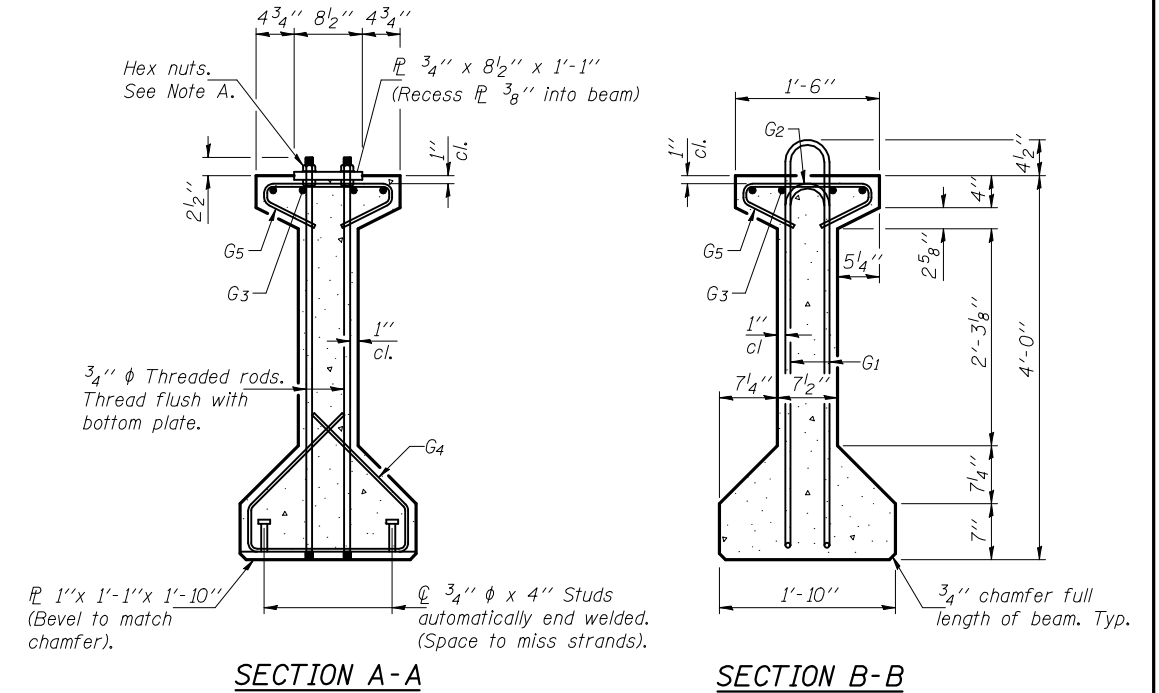


A ← B

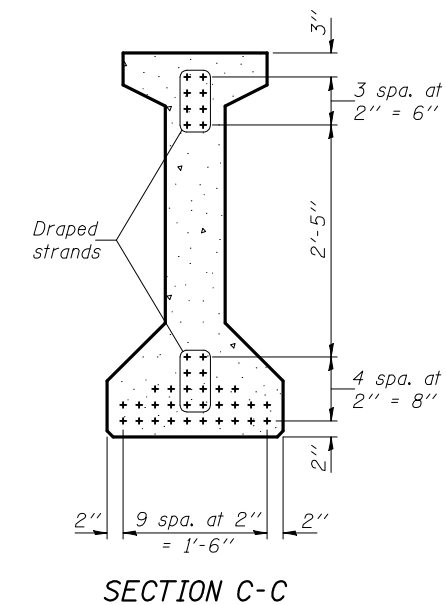
* 3 spaces at 3" = 9".
** 4-3/4" ϕ threaded dowel rods at 3" cts. Ea. face.

ELEVATION OF BEAM
(Showing reinforcement & dimensions)

Note A:
Hex nuts (top and bott.) with lock washers (top). Only tighten sufficiently to compress lock washers.



ELEVATION OF BEAM
(Showing prestressing steel)

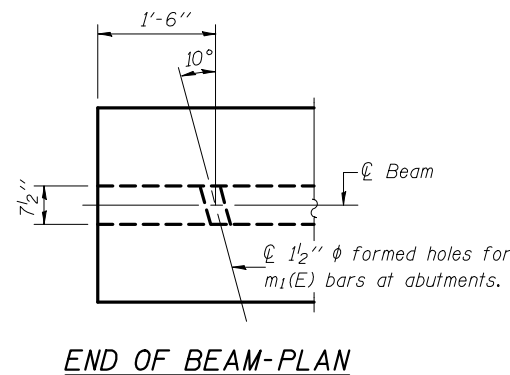


*****BAR LIST
ONE BEAM ONLY**

Bar	No.	Size	Length	Shape
G ₁	96	#4	9'-6"	\bar{C} L
G ₂	12	#4	7'-11"	\bar{C}
G ₃	12	#7	31'-8"	—
G ₄	38	#3	5'-3"	\bar{C} D
G ₅	89	#3	2'-9"	\bar{C} U

***For information only

Notes:
See sheet 15 of 21 for additional details and Bill of Material.
Required release strength, f'_{ci} , shall be 6000 psi.



DESIGNED	Phillip E. Coppernoll
CHECKED	Justin T. Belue
DRAWN	h.t. duong
CHECKED	PEC/JTB

EXAMINED	December 6, 2010
PASSED	Thomas J. Demagala ENGINEER OF BRIDGE DESIGN
	Ralph E. Anderson ENGINEER OF BRIDGES AND STRUCTURES

**48" PPC I-BEAM
STRUCTURE NO. 001-0507**

SHEET NO. 14 21 SHEETS	F.A.P. RTE. 745	SECTION 107B-1	COUNTY ADAMS	TOTAL SHEETS 86	SHEET NO. 48
	CONTRACT NO. 72B98				
FED. ROAD DIST. NO. _ ILLINOIS FED. AID PROJECT					