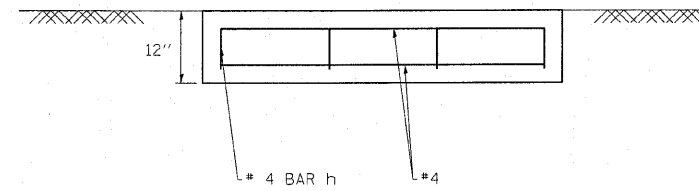
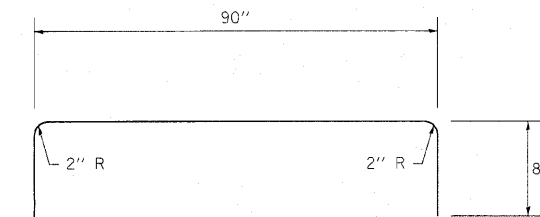


PLAN VIEW



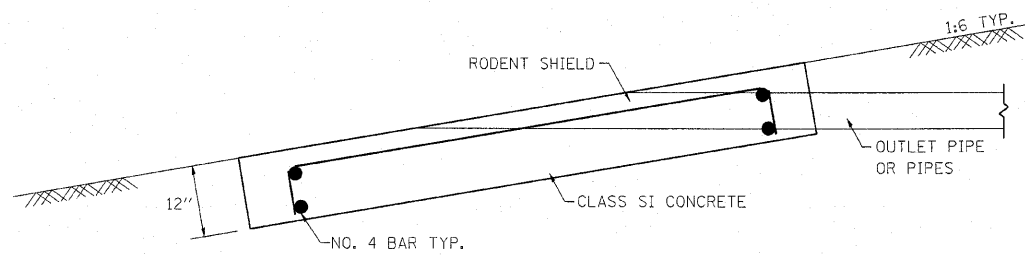
SECTION C-C



#4 h BAR

NOTES

- See Standard 601101 for details of rodent shields.
- The outlet pipe or pipes shall be located as close as possible to the center of the outlet protector.
- The last 10' of outlet pipe shall be schedule 40 PVC.
- The rebars may be cut or relocated to accommodate pipe.
- Cut outlet pipe on a bevel to match finished surface of surrounding PCC.



SECTION A-A

APPROXIMATE OUTLET PROTECTOR QUANTITIES FOR EACH OUTLET PROTECTOR	
CONCRETE, CLASS SI	REINFORCING STEEL
CU YD 1.5	LB 35.6

FILE NAME =	USER NAME = teasleyck	DESIGNED -	REVISED -	STATE OF ILLINOIS DEPARTMENT OF TRANSPORTATION	OUTLET PROTECTOR DETAILS			F.A.I. RTE.	SECTION	COUNTY	TOTAL SHEETS	SHEET NO.
c:\pw\work\p\idat\teasleyck\08148697\07	4417-sht-detail.dgn	DRAWN -	REVISED -					57	(13-1)R&(25-6-1)R		44	43
	PLOT SCALE = 50.0000' / IN.	CHECKED -	REVISED -		SCALE: SHEET NO. OF SHEETS STA. TO STA.			CONTRACT NO. 74417				
	PLOT DATE = 10/21/2010	DATE -	REVISED -		ILLINOIS FED. AID PROJECT							