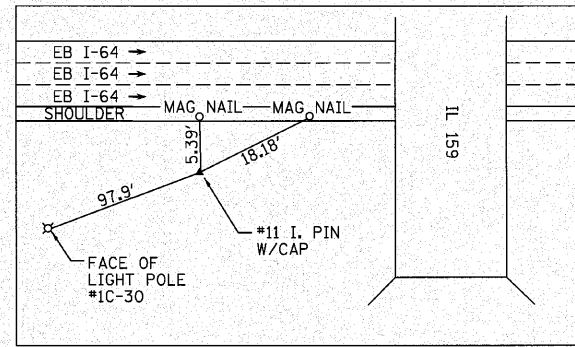


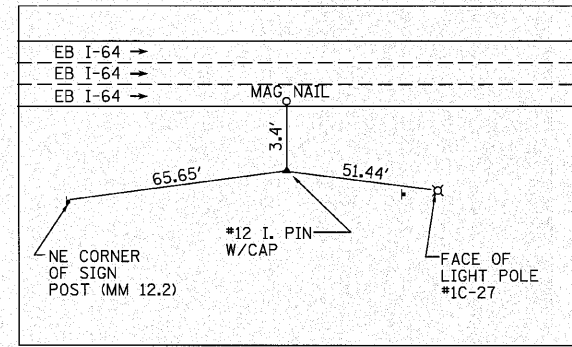
TIES TO CONTROL POINT 10
REBAR WITH IDOT CAP
STA. 528+27.01 72.84' RT.

N 703779.5968
E 347791.7343



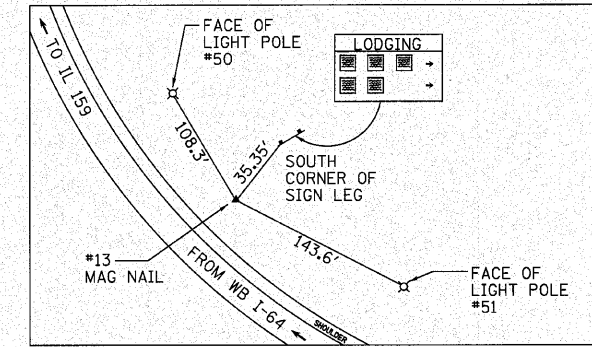
TIES TO CONTROL POINT 11
REBAR WITH IDOT CAP
STA. 535+86.01 72.62' RT.

N 703693.1628
E 348545.7985



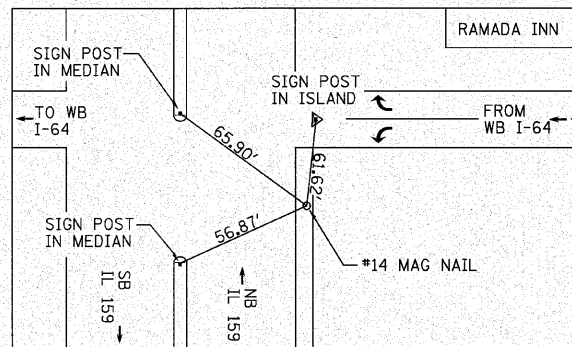
TIES TO CONTROL POINT 12
REBAR WITH IDOT CAP
STA. 544+28.28 70.84' RT.

N 703598.7601
E 349382.7658



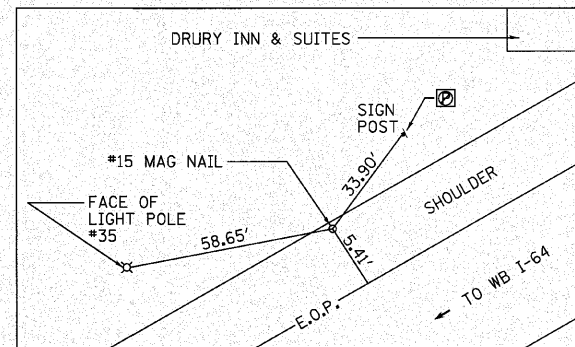
TIES TO CONTROL POINT 13
MAG NAIL
STA. 11+31.40 5.72' RT.

N 703929.4856
E 349395.3156



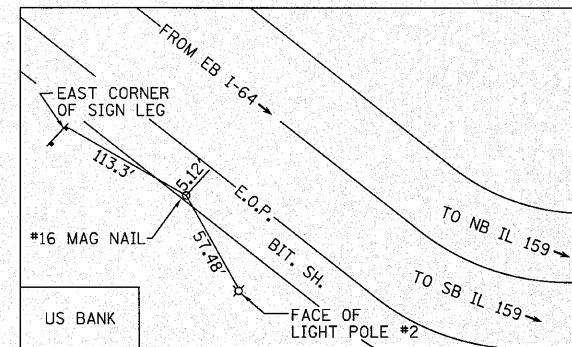
TIES TO CONTROL POINT 14
MAG NAIL
STA. 39+41.74 46.94' RT.

N 704191.4132
E 348736.5186



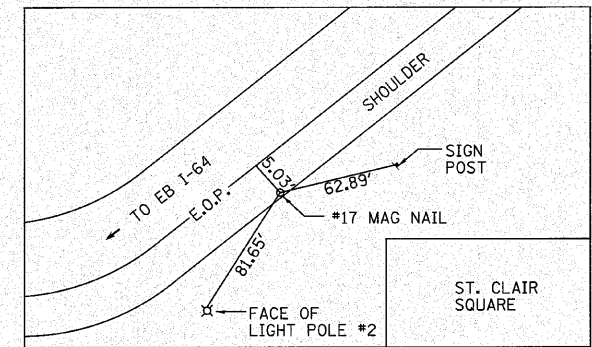
TIES TO CONTROL POINT 15
MAG NAIL
STA. 6+12.89 5.36' RT.

N 704134.2067
E 348098.9720



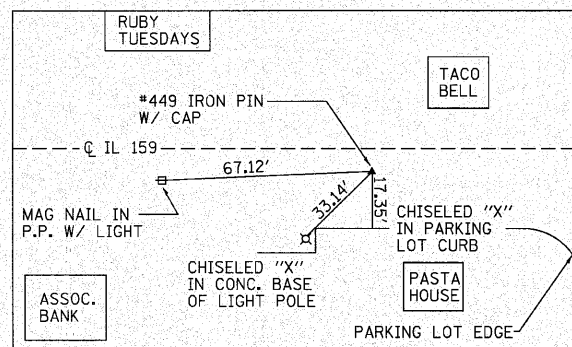
TIES TO CONTROL POINT 16
MAG NAIL
STA. 14+05.68 5.76' RT.

N 703364.8545
E 348149.1538



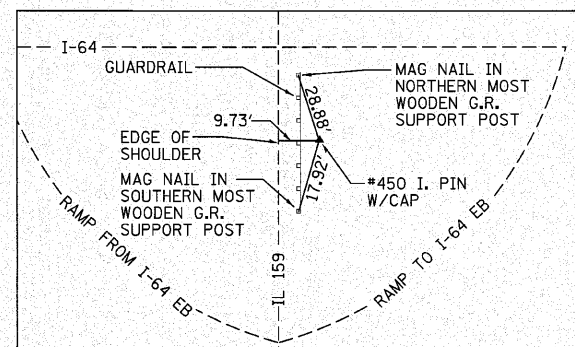
TIES TO CONTROL POINT 17
MAG NAIL
STA. 4+20.58 4.88' RT.

N 703251.6597
E 349091.4044



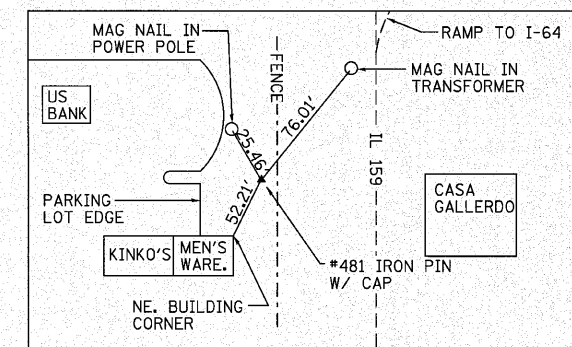
TIES TO CONTROL POINT 449
REBAR WITH IDOT CAP

N 702315.7065
E 348759.4013



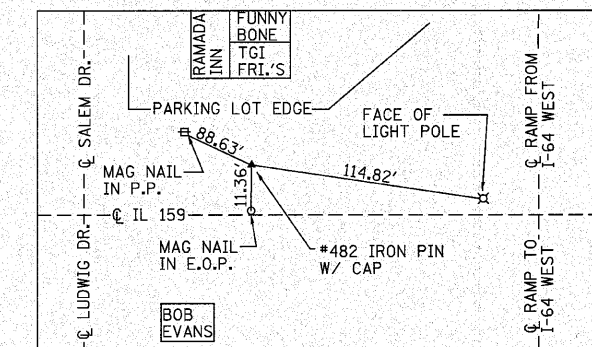
TIES TO CONTROL POINT 450
REBAR WITH IDOT CAP
STA. 32+63.10 61.39' RT.

N 703512.9487
E 348751.6860



TIES TO CONTROL POINT 481
REBAR WITH IDOT CAP
STA. 26+26.45 93.30' RT.

N 702874.8008
E 348609.3083



TIES TO CONTROL POINT 482
REBAR WITH IDOT CAP
STA. 41+92.56 56.42' RT.

N 704442.3155
E 348743.5070

FILE NAME =	USER NAME = burnsideem	DESIGNED -	REVISED -	STATE OF ILLINOIS DEPARTMENT OF TRANSPORTATION	ALIGNMENT, TIES AND BENCHMARK SHEET	F.A.I. RTE.	SECTION	COUNTY	TOTAL SHEETS	SHEET NO.	
at:\pwork\p\dot\burnsideem\d0166363\d	76d59-ATB.dgn	DRAWN -	REVISED -			64	82-5K-2	ST CLAIR	162	21	
PLOT SCALE = 50.0000' / IN.		CHECKED -	REVISED -			CONTRACT NO. 76D59					
PLOT DATE = 9/10/2010		DATE -	REVISED -			FED. ROAD DIST. NO. ILLINOIS FED. AID PROJECT					