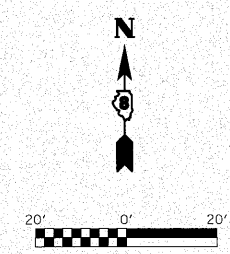
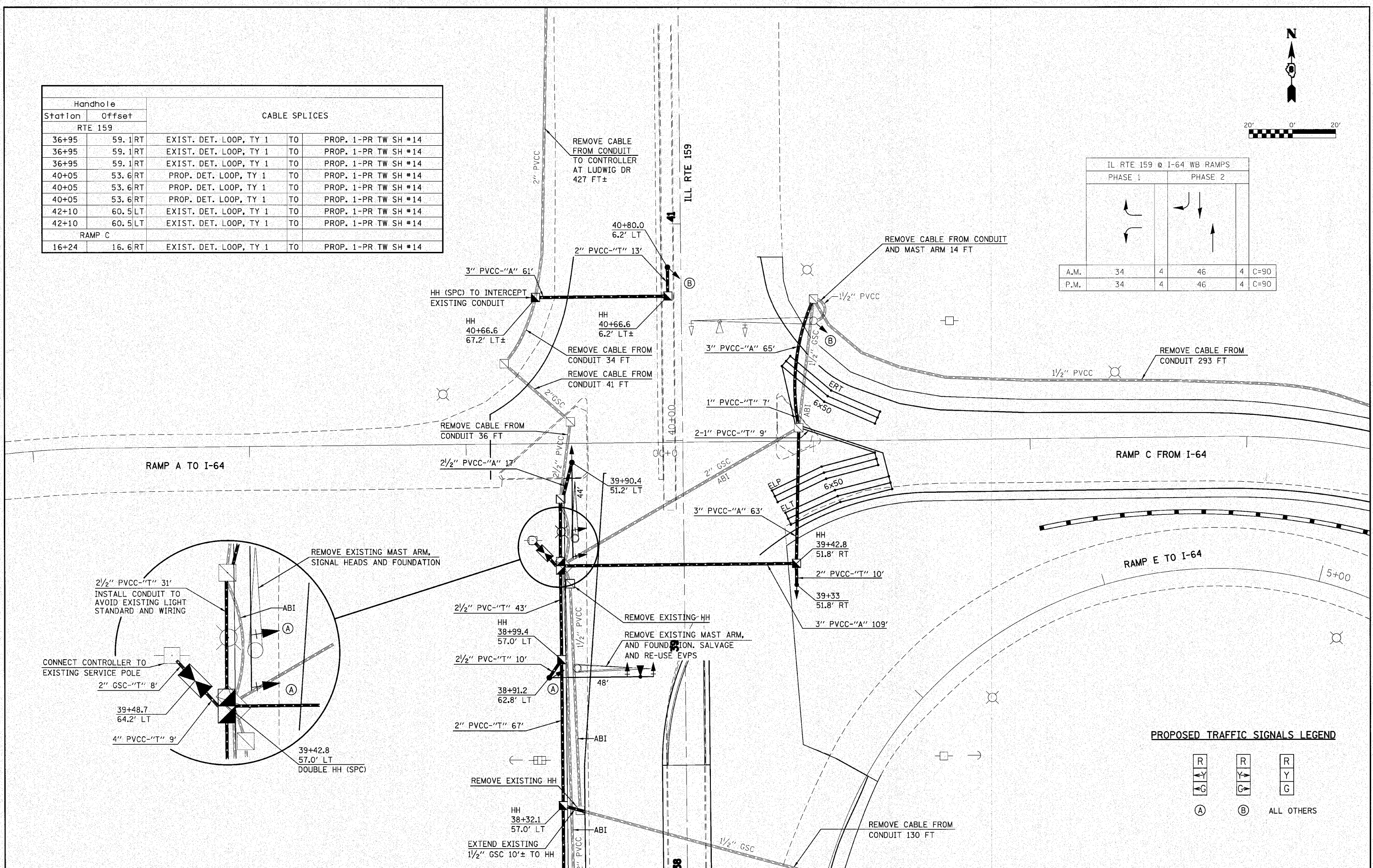


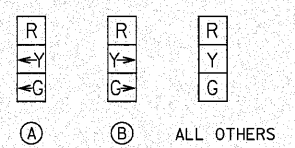
Handhole		CABLE SPLICES			
Station	Offset				
RTE 159					
36+95	59.1 RT	EXIST. DET. LOOP, TY 1	TO	PROP. 1-PR TW SH #14	
36+95	59.1 RT	EXIST. DET. LOOP, TY 1	TO	PROP. 1-PR TW SH #14	
36+95	59.1 RT	EXIST. DET. LOOP, TY 1	TO	PROP. 1-PR TW SH #14	
40+05	53.6 RT	PROP. DET. LOOP, TY 1	TO	PROP. 1-PR TW SH #14	
40+05	53.6 RT	PROP. DET. LOOP, TY 1	TO	PROP. 1-PR TW SH #14	
40+05	53.6 RT	PROP. DET. LOOP, TY 1	TO	PROP. 1-PR TW SH #14	
42+10	60.5 LT	EXIST. DET. LOOP, TY 1	TO	PROP. 1-PR TW SH #14	
42+10	60.5 LT	EXIST. DET. LOOP, TY 1	TO	PROP. 1-PR TW SH #14	
RAMP C					
16+24	16.6 RT	EXIST. DET. LOOP, TY 1	TO	PROP. 1-PR TW SH #14	



IL RTE 159 @ I-64 WB RAMPS					
	PHASE 1		PHASE 2		
A.M.	34	4	46	4	C=90
P.M.	34	4	46	4	C=90



PROPOSED TRAFFIC SIGNALS LEGEND



FILE NAME =	USER NAME = burnsideem	DESIGNED -	REVISED -	STATE OF ILLINOIS DEPARTMENT OF TRANSPORTATION	NORTH JUNCTION SIGNAL LAYOUT PLAN	F.A.I. RTE.	SECTION	COUNTY	TOTAL SHEETS	SHEET NO.
o:\pwork\pwork\burnsideem\2210578\107659-sh-t-ts5.dgn	DRAWN -	REVISED -	64			82-5K-2	ST. CLAIR	162	55	
PLOT SCALE = 20,000 / IN.	CHECKED -	REVISED -	CONTRACT NO. 76D59							
PLOT DATE = 8/18/2010	DATE -	REVISED -	ILLINOIS FED. AID PROJECT							