

STATE OF ILLINOIS  
DEPARTMENT OF TRANSPORTATION

GENERAL NOTES

Fasteners shall be AASHTO M164 Type I, mechanically galvanized bolts. Bolts  $\frac{7}{8}$  in.  $\phi$ , holes  $\frac{9}{16}$  in.  $\phi$ , unless otherwise noted.

Calculated weight of Structural Steel = 68,850 lb.

No field welding is permitted except as specified in the contract documents.

Reinforcement bars shall conform to the requirements of ASTM A 706 Gr 60. See Special Provisions.

Reinforcement bars designated (E) shall be epoxy coated.

Prior to pouring the new concrete deck, all heavy or loose rust, loose mill scale, and other loose or potentially detrimental foreign material shall be removed from the surfaces in contact with concrete. Tightly adhered paint may remain unless otherwise noted. Removal shall be accomplished by methods that will not damage the steel and the cost will be included in the pay item covering removal of the existing concrete.

As directed by the Engineer, existing construction accessories welded to the top flange of beams and girders shall be removed. The weld areas shall be ground flush and inspected for cracks using magnetic particle testing (MT) or dye penetrant testing (PT) by qualified personnel approved by the Engineer. Field welding of construction accessories will not be permitted to the bottom flange of the beams or girders not to the top flange for a distance equal to one-fourth the span length each way from the pier supports. Any cracks that cannot be removed by grinding  $\frac{1}{4}$  inch deep shall be identified and reported to the Bureau of Bridges and Structures for further disposition. The cost of removing welded accessories, grinding and inspecting weld areas and grinding cracks will be paid for according to Article 109.04 of the Standard Specifications.

If the Contractor elects to use cantilever forming brackets on the exterior beams or girders, the brackets shall be placed at the same locations as required for the hardwood blocks in Article 503.06(b) of the Standard Specifications. If additional cantilever forming brackets are required, hardwood blocking shall be wedged between the exterior and first interior beam at each of these additional bracket locations.

Plan dimensions and details relative to existing plans are subject to nominal construction variations. The Contractor shall field verify existing dimensions and details affecting new construction and make necessary approved adjustments prior to construction or ordering of materials. Such variations shall not be cause for additional compensation for a change in scope of the work, however, the Contractor will be paid for the quantity actually furnished at the unit price bid for the work.

Bearing seat surfaces shall be constructed or adjusted to the designated elevations within a tolerance of  $\frac{1}{8}$  inch (0.01 ft.). Adjustment shall be made either by grinding the surface or by shimming the bearings.

Concrete Sealer shall be applied to the designated areas of the abutments, pier, and retaining walls.

The Inorganic Zinc Rich Primer / Acrylic / Acrylic Paint System shall be used for shop and field painting of new structural steel except where otherwise noted. The color of the final finish coat for all interior steel surfaces shall be gray, Munsell No. 5B 7/1. The color of the final finish coat for the exterior and bottom flange of the fascia beams shall be Interstate Green, Munsell No. 7.5 G 4/8. See Special Provision for "Cleaning and Painting New Metal Structures".

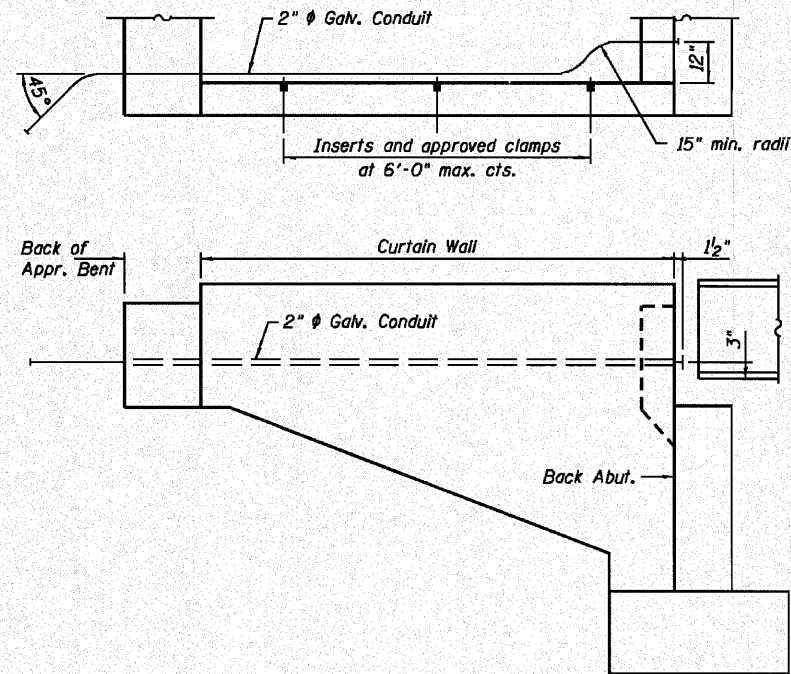
Existing structural steel shall only be cleaned and painted as required by the Special Provision for "Cleaning and Painting Contact Surface Areas of Existing Steel Structures."

The existing structural steel coating contains lead. The Contractor shall take appropriate precautions to deal with the presence of lead on this project.

The embankment configuration shown shall be the minimum that must be placed and compacted prior to construction of the abutments.

The Contractor shall be responsible for maintaining the stability and structural integrity of the existing structure, during construction of Tied Back Soldier Pile Walls.

Slipforming of the parapets is not allowed.

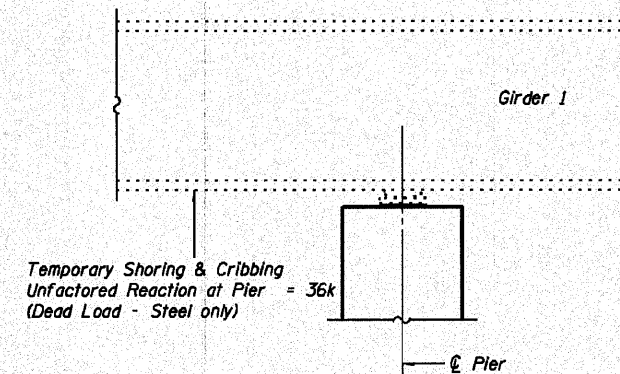


ELECTRICAL CONDUIT DETAILS

Notes:  
Existing conduit on S.W. Curtain Wall and E. Fascia beam to be removed and relocated. See Electrical Plans for details and quantities.

TOTAL BILL OF MATERIAL

ITEM	UNIT	SUPER	SUB	TOTAL
Concrete Removal	Cu. Yd.		23.2	23.2
Slope Wall Removal	Sq. Yd.		372.7	372.7
Removal of Existing Concrete Deck	Each	1		1
Protective Shield	Sq. Yd.	106		106
Structure Excavation	Cu. Yd.		332	332
Concrete Structures	Cu. Yd.		190.5	190.5
Concrete Superstructure	Cu. Yd.	225.5		225.5
Bridge Deck Grooving	Sq. Yd.	513		513
Protective Coat	Sq. Yd.	648		648
Precast Concrete Lagging	Sq. Ft.		863	863
Furnishing and Erecting Structural Steel	L Sum	1		1
Stud Shear Connectors	Each	864	926	1,790
Untreated Timber Lagging	Sq. Ft.		1,049	1,049
Reinforcement Bars, Epoxy Coated	Pound	62,210	25,060	87,270
Bar Splicers	Each	32		32
Bridge Fence Railing	Foot	223		223
Furnishing Metal Shell Piles 12" x 0.250"	Foot		1,068	1,068
Furnishing Soldier Piles (HP Section)	Foot		1,517	1,517
Driving Piles	Foot		1,068	1,068
Test Pile Metal Shells	Each		3	3
Name Plates	Each		1	1
Elastomeric Bearing Assembly, Type I	Each	4		4
Anchor Bolts, 1"	Each	14		14
Anchor Bolts, 1 1/4"	Each	12		12
Sand Backfill	Cu. Yd.		94	94
Concrete Sealer	Sq. Ft.		2,835	2,835
Geocomposite Wall Drain	Sq. Yd.		195	195
Pipe Underdrains for Structures 4"	Foot		275	275
Concrete Gutter, Type B	Foot		275	275
Braced Excavation	Cu. Yd.		64	64
Silicone Joint Sealer, 2"	Foot	17.7		17.7
Permanent Ground Anchor	Each		26	26
Silicone Joint Sealer, 1 1/2"	Foot	17.7		17.7
Drilling and Setting Soldier Piles (In Soil)	Cu. Ft.		2,111	2,111
Driving Soldier Piles	Foot		844	844
Remove and Re-Erect Bridge Mounted Sign	Each	1		1
Temporary Shoring and Cribbing	Each		1	1



TEMPORARY SHORING AND CRIBBING ELEVATION

GENERAL DATA AND DETAILS  
STRUCTURE NO. 082-0176

SHEET NO. 2	F.A. RTE.	SECTION	COUNTY	TOTAL SHEETS	SHEET NO.
34 SHEETS	64	82-5K-2	ST. CLAIR	162	85
			CONTRACT NO. 76D59		
			ILLINOIS FED. AID PROJECT		

DESIGNED - T.J.Z.
CHECKED - C.W.C.
DRAWN - D.L.H.
CHECKED - C.W.C., S.D.S.

**WHKS & CO.**  
ENGINEERING  
7018 KINGSMILL CT.,  
SPRINGFIELD, IL  
(217) 483-9457  
DESIGN FIRM #184001036