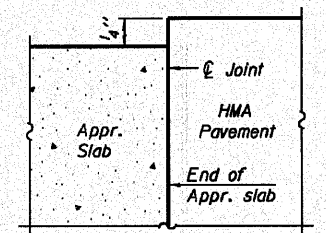
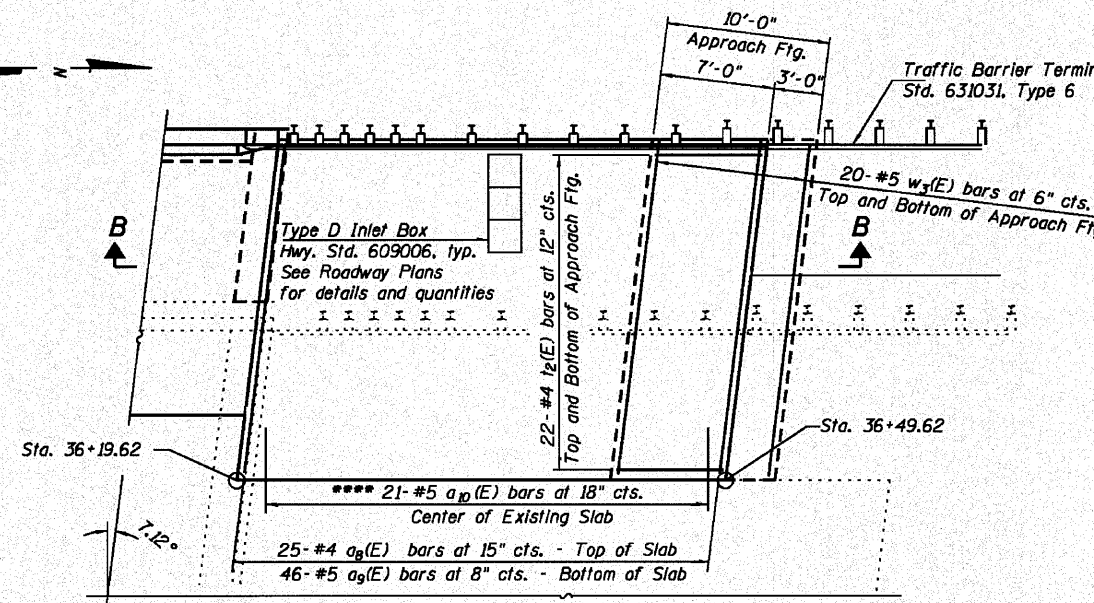
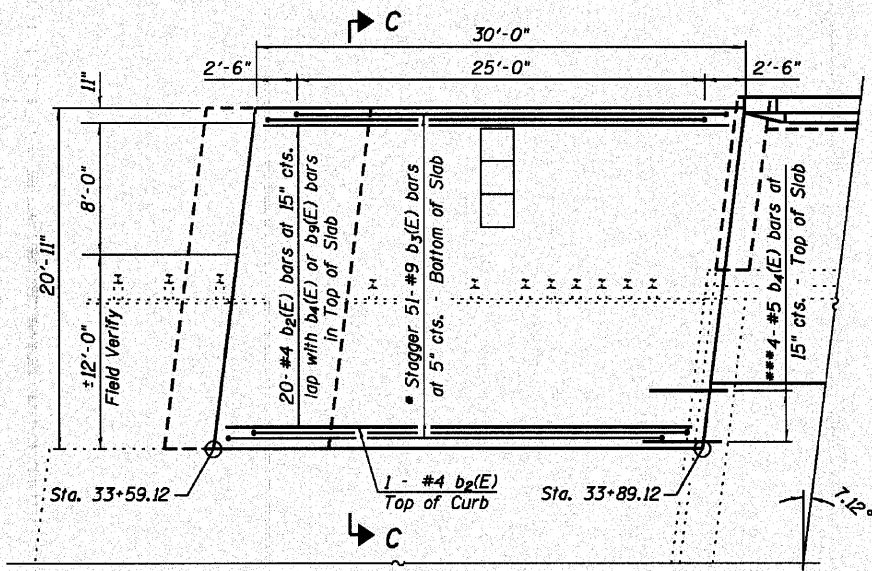


STATE OF ILLINOIS  
DEPARTMENT OF TRANSPORTATION

Notes:

- Bars  $a_8(E)$  and  $a_9(E)$  spacing measured along  $\text{CL}$  Rdwy.
- Approach slab shall be paid for as Concrete Superstructure.
- Approach footing concrete shall be paid for as Concrete Structures.
- Reinforcement shall be paid for as Reinforcement Bars, Epoxy Coated.
- For  $v_7(E)$  bar details, see sheet 16 of 34.
- The approach footing maximum applied service bearing pressure ( $Q_{max}$ ) = 2.0 ksf.
- For bar splicer details, see sheet 9 of 34.
- Cost of excavation for approach footing included with Concrete Structures.
- The Contractor shall verify  $a_9(E)$  bars will have greater than 2" cl. in the proposed slab before drilling and grouting.
- The grout and method of application shall be according to Section 584 in the Standard Specifications and shall develop capacity of the bar.



**MINIMUM BAR LAP**  
#4 bar = 2'-7"

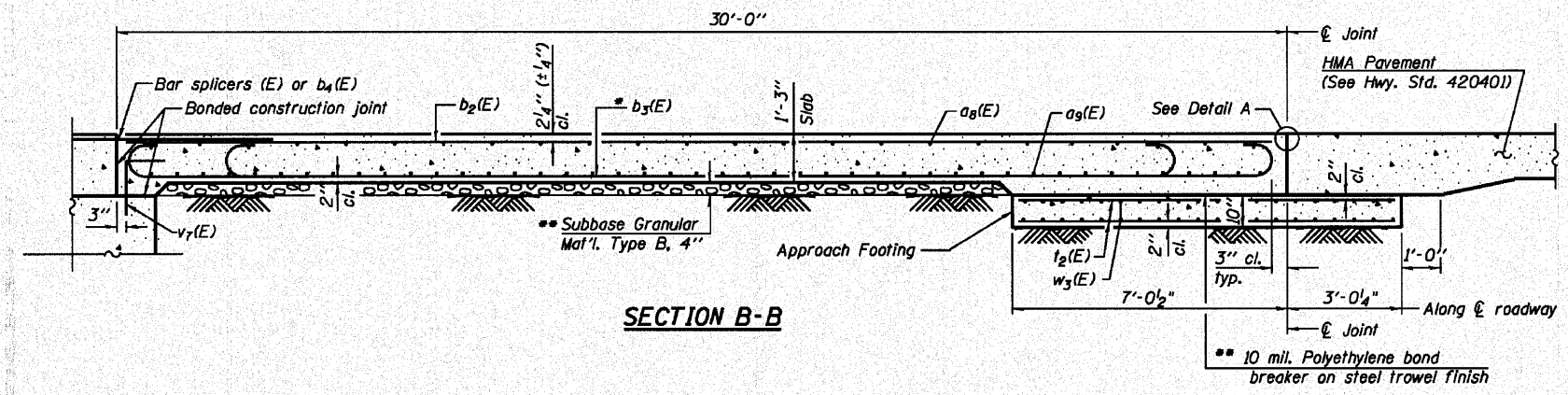
FLEXIBLE PAVEMENT  
DETAIL A

**SOUTH APPROACH SLAB PLAN**

(For  $a_8(E)$ ,  $a_9(E)$ ,  $a_{10}(E)$ ,  $w_3(E)$ , and  $t_2(E)$  bars, See North Approach Slab Plan)

**NORTH APPROACH SLAB PLAN**

(For  $b_2(E)$ ,  $b_3(E)$ , and  $b_4(E)$  bars, See South Approach Slab Plan)

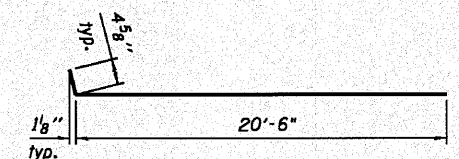


SECTION B-B

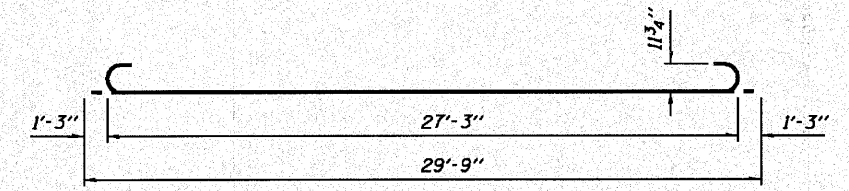
- \*\*\* Till #9  $b_3(E)$  bars as required to maintain clearance.
- \*\*\* Cost of Subbase Granular Material Type B, 4" and excavation for approach slab and Subbase Granular Material type B, 4" Bond Breaker included with "Concrete Superstructure".
- \*\*\* #4 bars drilled and epoxy grouted into  $\frac{3}{4}$ "  $\phi$  x 9" holes (min.).
- \*\*\* #5 bars drilled and epoxy grouted into  $\frac{7}{8}$ "  $\phi$  x 9" holes (min.).

**TWO APPROACH SLABS  
BILL OF MATERIAL**

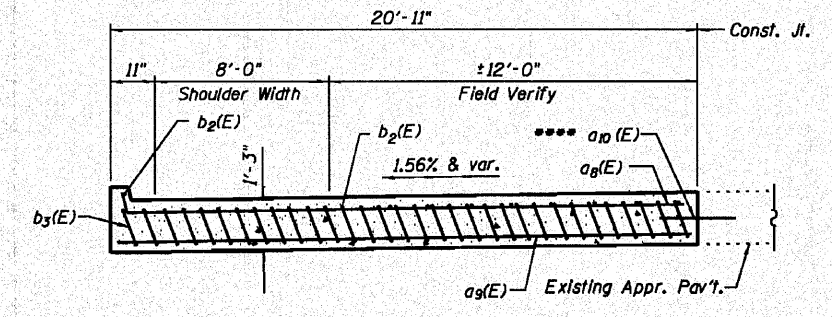
Bar	No.	Size	Length	Shape
$a_8(E)$	50	#4	20'-10"	—
$a_9(E)$	92	#5	20'-7"	—
$a_{10}(E)$	42	#5	1'-6"	—
$b_2(E)$	42	#4	29'-8"	—
$b_3(E)$	102	#9	29'-9"	—
$b_4(E)$	8	#5	3'-10"	—
$t_2(E)$	88	#4	9'-8"	—
$w_3(E)$	80	#5	20'-7"	—
Concrete Superstructure		Cu. Yd.	62.0	
Concrete Structures		Cu. Yd.	13.0	
Reinforcement Bars, Epoxy Coated		Pound	16,200	



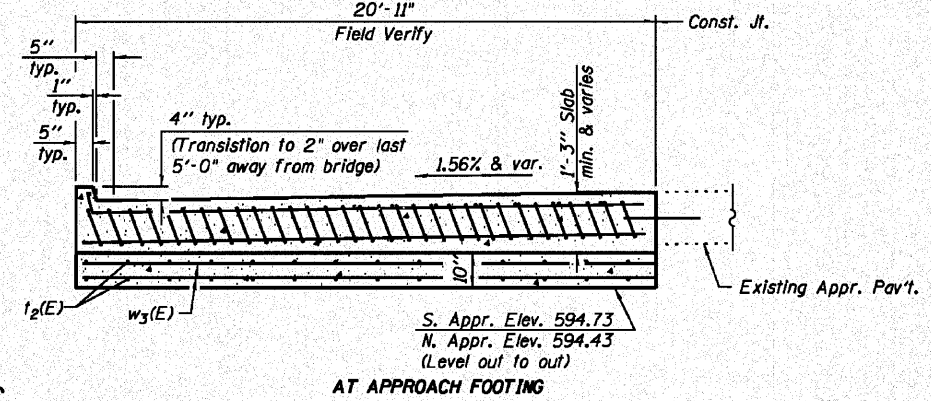
BAR  $a_8(E)$



BAR  $b_3(E)$



NEAR ABUTMENT



SECTION C-C

(See Plan for dimensions not shown)

AT APPROACH FOOTING

DESIGNED - T.J.Z
CHECKED - C.W.C
DRAWN - D.L.H
CHECKED - C.W.C, S.D.S

**WHS & CO.**  
ENGINEERING  
7018 KINGSMILL CT.,  
SPRINGFIELD, IL  
(217) 483-9457  
DESIGN FIRM #184001036

**APPROACH SLABS  
STRUCTURE NO. 082-0176**

SHEET NO. 7 34 SHEETS	F.A. RTE.	SECTION	COUNTY	TOTAL SHEETS	SHEET NO.
	64	82-5K-2	ST. CLAIR	162	90
			CONTRACT NO. 76D59		
ILLINOIS FED. AID PROJECT					