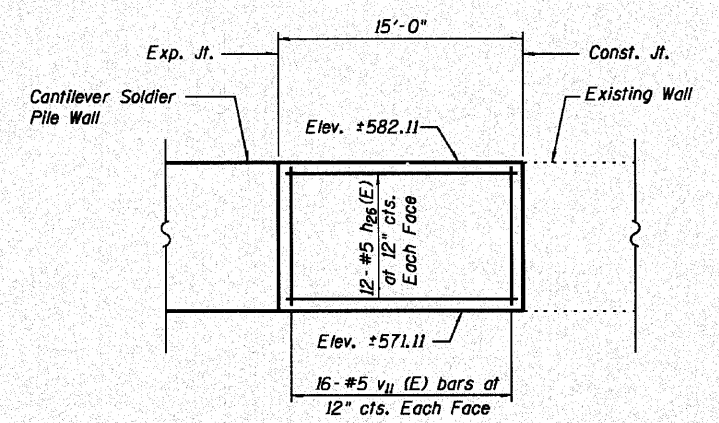


STATE OF ILLINOIS
DEPARTMENT OF TRANSPORTATION

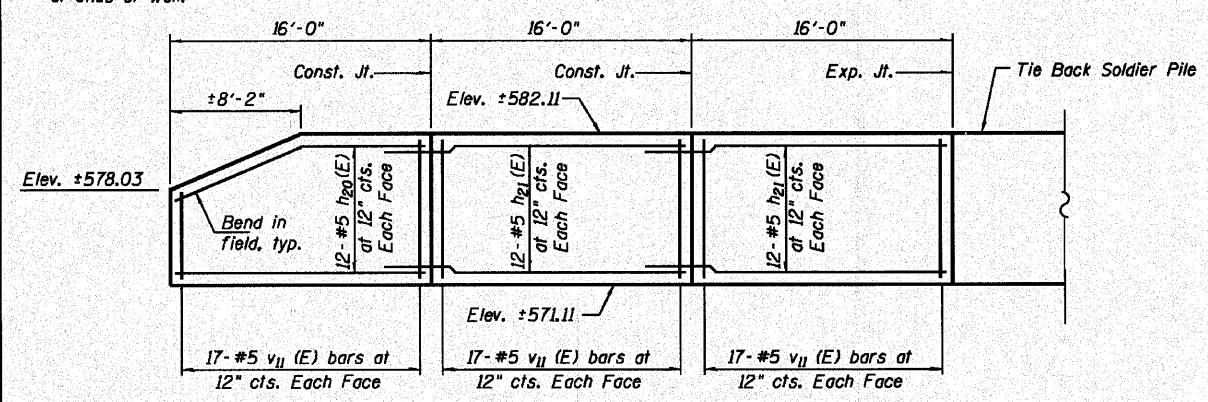
BILL OF MATERIAL

Bar	No.	Size	Length	Shape
$h_{20}(E)$	24	#5	15'-8"	—
$h_{21}(E)$	48	#5	19'-3"	—
$h_{25}(E)$	24	#5	14'-8"	—
$v_{11}(E)$	134	#5	10'-8"	—
Concrete Structures		Cu. Yd.	28.1	
Precast Concrete Lagging		Sq. Ft.	98	
Stud Shear Connectors		Each	256	
Untreated Timber Lagging		Sq. Ft.	397	
Reinforcement Bars, Epoxy Coated		Pound	3,210	
Furnishing Soldier Piles (HP Section)		Foot	400	
Geocomposite Wall Drain		Sq. Yd.	53	
Pipe Underdrains for Structures 4"		Foot	63	
Concrete Gutter, Type B		Foot	63	
Permanent Ground Anchor		Each	4	
Drilling and Setting Soldier Piles (In Soil)		Cu. Ft.	343	
Driving Soldier Piles		Foot	291	
Concrete Sealer		Sq. Ft.	490	



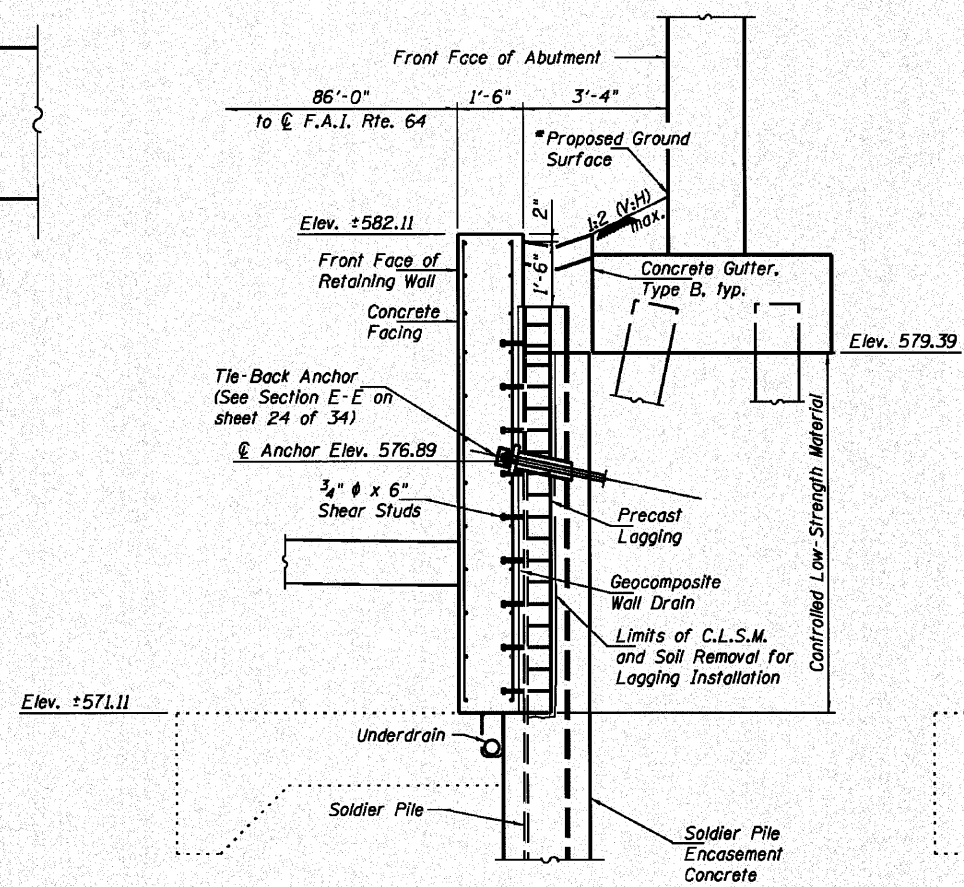
CONCRETE FASCIA ELEVATION AT TIE-BACK SOLDIER PILE WALL

Note:
Cut $v_{11}(E)$ bars in field at ends of wall.

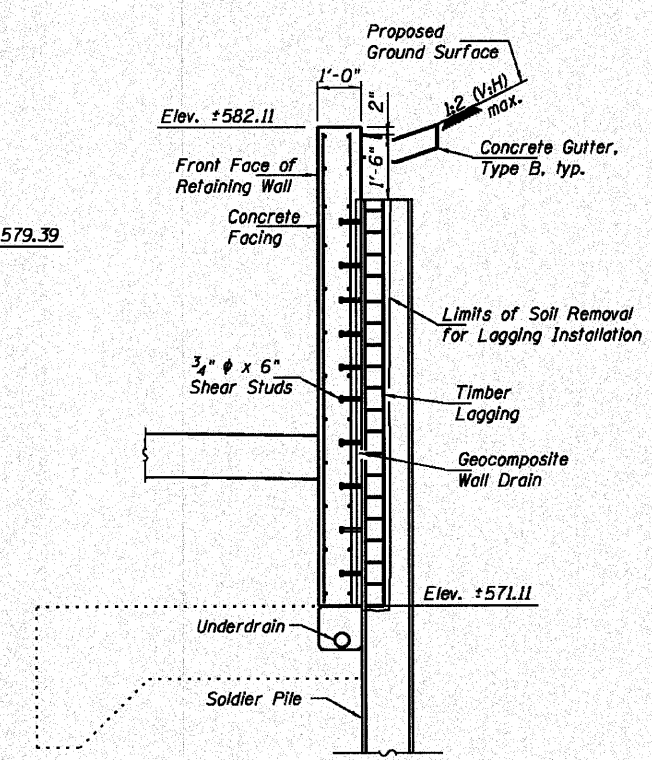


CONCRETE FASCIA ELEVATION AT CANTILEVER SOLDIER PILE WALL
(West End Shown)

* Proposed ground surface to be finished with coarse aggregate. Cost included with "Concrete Gutter, Type B".



SECTION A-A



SECTION B-B NORTH RETAINING WALL DETAILS
STRUCTURE NO. 082-0176

SHEET NO. 23 34 SHEETS	F.A. RTE.	SECTION	COUNTY	TOTAL SHEETS	SHEET NO.
	64	82-5K-2	ST. CLAIR	162	106
CONTRACT NO. 76D59					
ILLINOIS FED. AID PROJECT					

DESIGNED - T.J.Z.
CHECKED - C.W.C.
DRAWN - D.L.H.
CHECKED - C.W.C., S.D.S.

WHKS & Co.
ENGINEERING

7018 KINGSMILL CT.,
SPRINGFIELD, IL
(217) 483-9457
DESIGN FIRM #184001036