

STATE OF ILLINOIS  
DEPARTMENT OF TRANSPORTATION

**GENERAL NOTES**

Fasteners shall be AASHTO M164 Type 1, mechanically galvanized bolts in painted areas and M164 Type 3 in unpainted areas. Bolts  $\frac{7}{8}$  in.  $\phi$ , holes  $\frac{15}{16}$  in.  $\phi$ , unless otherwise noted.

Calculated weight of Structural Steel = 91,480 lbs.

All structural steel shall be AASHTO M 270 Grade 50W. All structural steel shall be cleaned as specified in the Special Provision for "Surface Preparation and Painting Requirements for Weathering Steel".

No field welding is permitted except as specified in the contract documents.

Reinforcement bars shall conform to the requirements of ASTM A 706 Gr 60. See Special Provisions.

Reinforcement bars designated (E) shall be epoxy coated.

Bearing seat surfaces shall be constructed or adjusted to the designated elevations within a tolerance of  $\frac{1}{8}$  inch (0.01 ft.). Adjustment shall be made either by grinding the surface or by shimming the bearings.

Structural steel shall only be painted for a distance equal to the depth of embedment into the concrete cap plus 3 inches. Painted areas shall be primed in the shop with a Department approved zinc rich primer. Field painting will not be required.

Layout of slope protection system may be varied to suit ground conditions in the field as directed by the Engineer.

In lieu of the hammer selection criteria and use of the FHWA Modified Gates formula specified in Section 512 of the Standard Specifications, the Contractor shall conduct a wave equation analysis to establish the driving criteria at all pile foundations which specify a nominal required bearing above 600 kips. The analysis and calculations shall be submitted to the Engineer for approval.

Slipforming of parapets is not allowed.

Current Ratings on File for Existing Structure

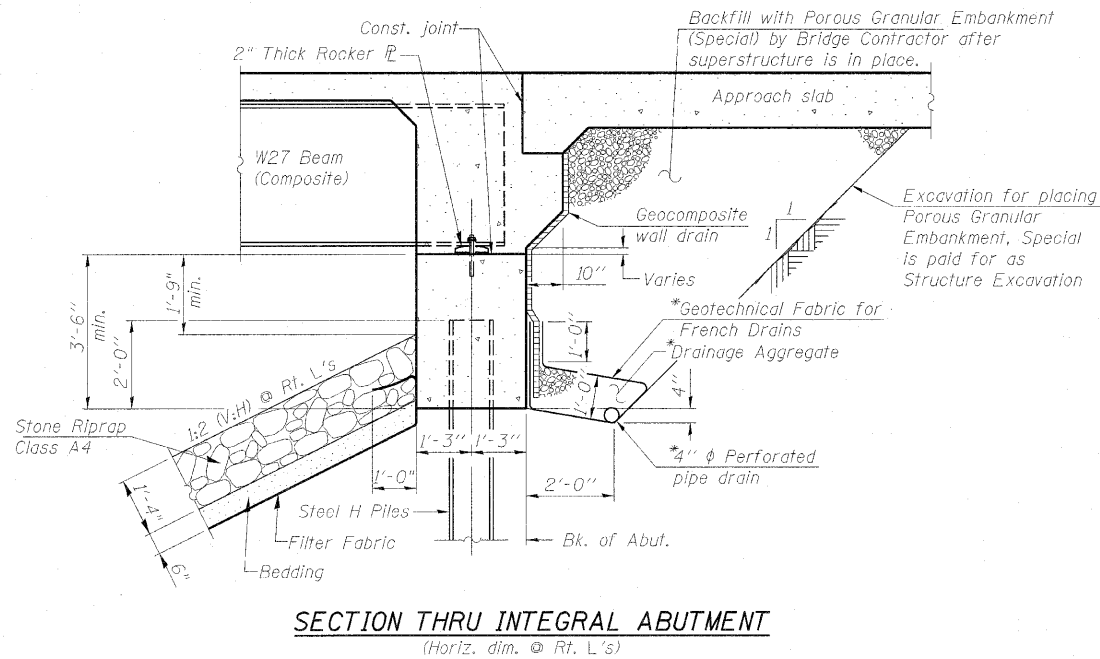
Inventory: HS-5.1

Operating: HS-12.7

Live Load Restrictions: No

Inventory and Operating Ratings and Live Load Restrictions are provided for information only. Inventory and Operating Ratings are based on HS loading and configuration. Live load Restrictions are based on Illinois legal loads and configurations. The Ratings and Live Load Restrictions are not necessarily representative of capacities to support Contractor's equipment.

The Contractor is advised that the existing structure contains members that are in a deteriorated condition with reduced load carrying capacity. It is the Contractor's responsibility to account for the condition of the existing structure when developing construction procedures for the complete or partial removal, or replacement of the structure. An Existing Structure Information Package is available upon request as noted in the Special Provisions.



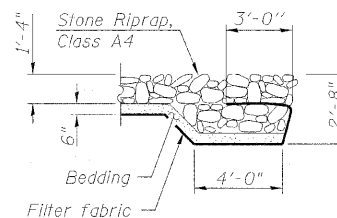
**SECTION THRU INTEGRAL ABUTMENT**

(Horiz. dim. @ Rt. L's)

\*Included in the cost of Pipe Underdrains for Structures.

Note:

All drainage system components shall extend to 2'-0" from the end of each wingwall except an outlet pipe shall extend until intersecting with the side slope. The pipes shall drain into concrete headwalls. (See Article 601.05 of the Standard Specifications and Highway Standard 601101)



**SECTION B-B**

**INDEX OF SHEETS**

- 1 General Plan
- 2 General Data
- 3 Substructure Layout and Temporary Sheet Piling Details
- 4-5 Stage Construction Details
- 6 Temporary Concrete Barrier for Stage Construction
- 7-9 Top of Slab Elevations - Bridge Deck
- 10-11 Top of Slab Elevations - Approach Slabs
- 12-14 Superstructure Details
- 15-16 Bridge Approach Slab Details
- 17 Drainage Scuppers Details
- 18-19 Structural Steel Details
- 20 Bearing Details
- 21 North Abutment
- 22 South Abutment
- 23 Pier 1
- 24 Pier 2
- 25 HP Pile Details
- 26 Bar Splicer Assembly and Mechanical Splicer Details
- 27 Cantilever Forming Brackets
- 28-29 Boring Logs

STATION 1439+22.25  
BUILT 20\_\_ BY  
STATE OF ILLINOIS  
F.A.P. RT. 885 SEC. 6B-2  
LOADING HL93  
STRUCTURE NO. 076-0029

**NAME PLATE**  
See Std. 515001

**GENERAL DATA**  
**STRUCTURE NO. 076-0029**

**TOTAL BILL OF MATERIAL**

ITEM	UNIT	SUPER	SUB	TOTAL
Porous Granular Embankment, Special	Cu. Yd.	-	86	86
Stone Riprap, Class A4	Sq. Yd.	-	2030	2030
Filter Fabric	Sq. Yd.	-	2030	2030
Removal of Existing Structures	Each	-	-	1
Sloped Wall Removal	Sq. Yd.	-	984	984
Structure Excavation	Cu. Yd.	-	292	292
Concrete Structures	Cu. Yd.	-	208.2	208.2
Concrete Superstructure	Cu. Yd.	291.4	-	291.4
Bridge Deck Grooving	Sq. Yd.	675	-	675
Concrete Encasement	Cu. Yd.	-	15.4	15.4
Protective Coat	Sq. Yd.	874	-	874
Furnishing and Erecting Structural Steel	L. Sum	1	-	1
Stud Shear Connectors	Each	2988	-	2988
Reinforcement Bars, Epoxy Coated	Pound	70420	20460	90880
Bar Splicers	Each	731	170	901
Furnishing Steel Piles HPI4x89	Foot	-	1109	1109
Driving Piles	Foot	-	1109	1109
Test Pile Steel HPI4x89	Each	-	2	2
Temporary Sheet Piling	Sq. Ft.	-	1102	1102
Name Plates	Each	1	-	1
Anchor Bolts, 1"	Each	48	-	48
Geocomposite Wall Drain	Sq. Yd.	-	54	54
Pipe Underdrains for Structures 4"	Foot	-	130	130
Drainage Scuppers, DS-II	Each	2	-	2
Temporary Soil Retention System	Sq. Ft.	-	467	467
Mechanical Splicers	Each	-	156	156

PROFESSIONAL DESIGN FIRM LICENSE #184-001084 © Copyright Hanson Professional Services Inc. 2010		NO. NO. 08H0131	SHEET NO. 2	F.A.P. RTE. 885	SECTION 6B-2	COUNTY Pope	TOTAL SHEETS 48	SHEET NO. 21
Hanson Professional Services Inc.		DATE 05/21/10	29 SHEETS	CONTRACT NO. 78141		ILLINOIS FED. AID PROJECT		