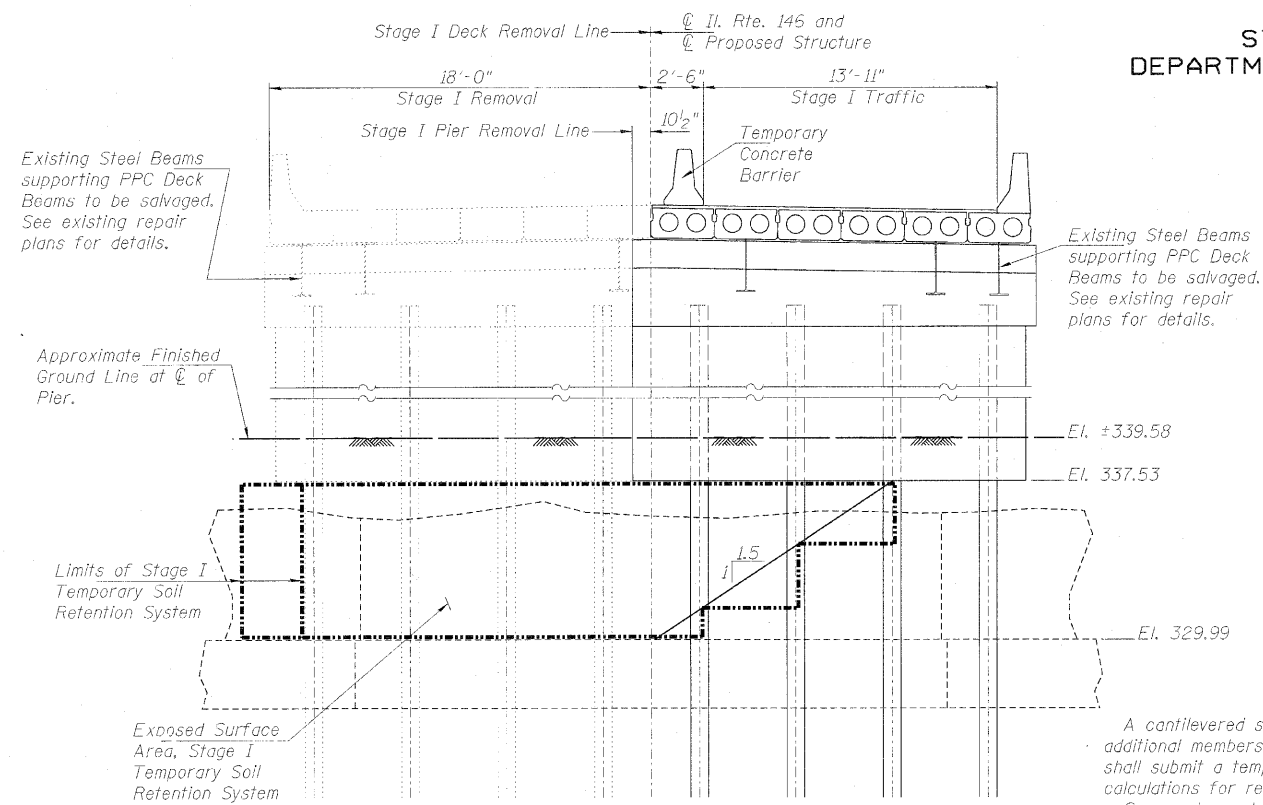
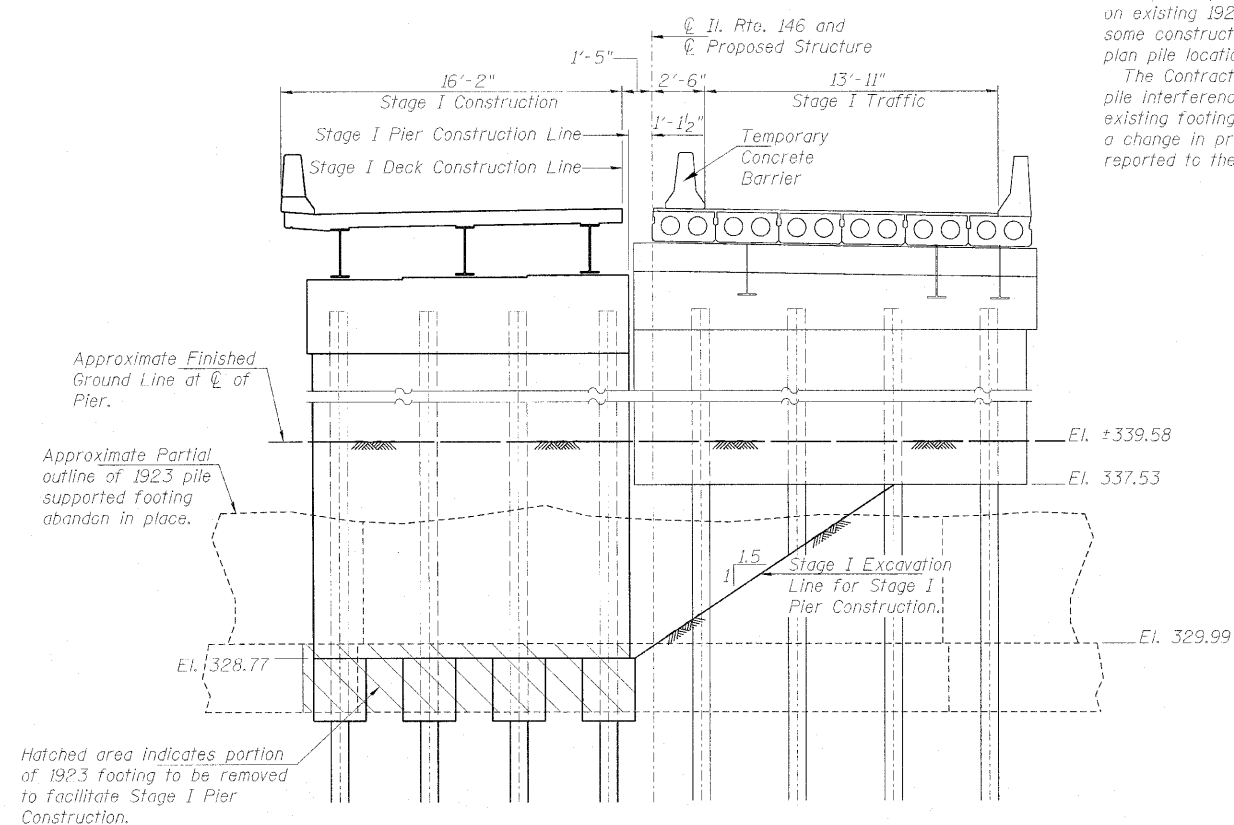


STATE OF ILLINOIS  
DEPARTMENT OF TRANSPORTATION



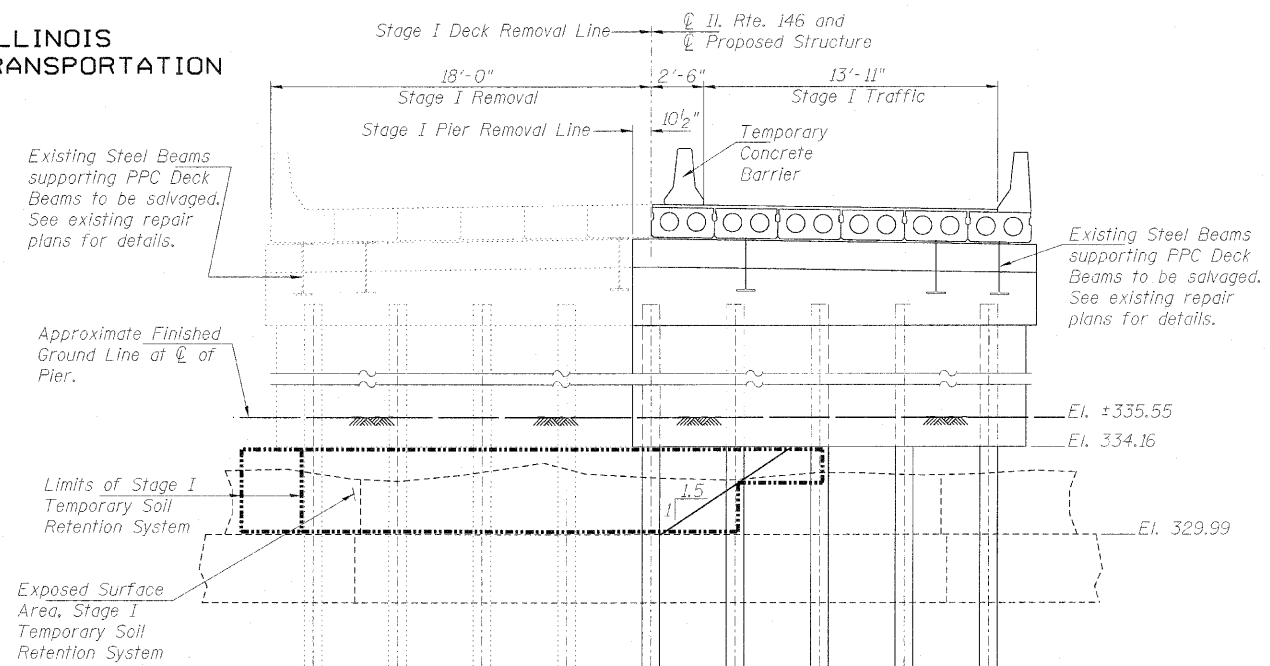
**PIER 1 - STAGE I REMOVAL**  
Looking South



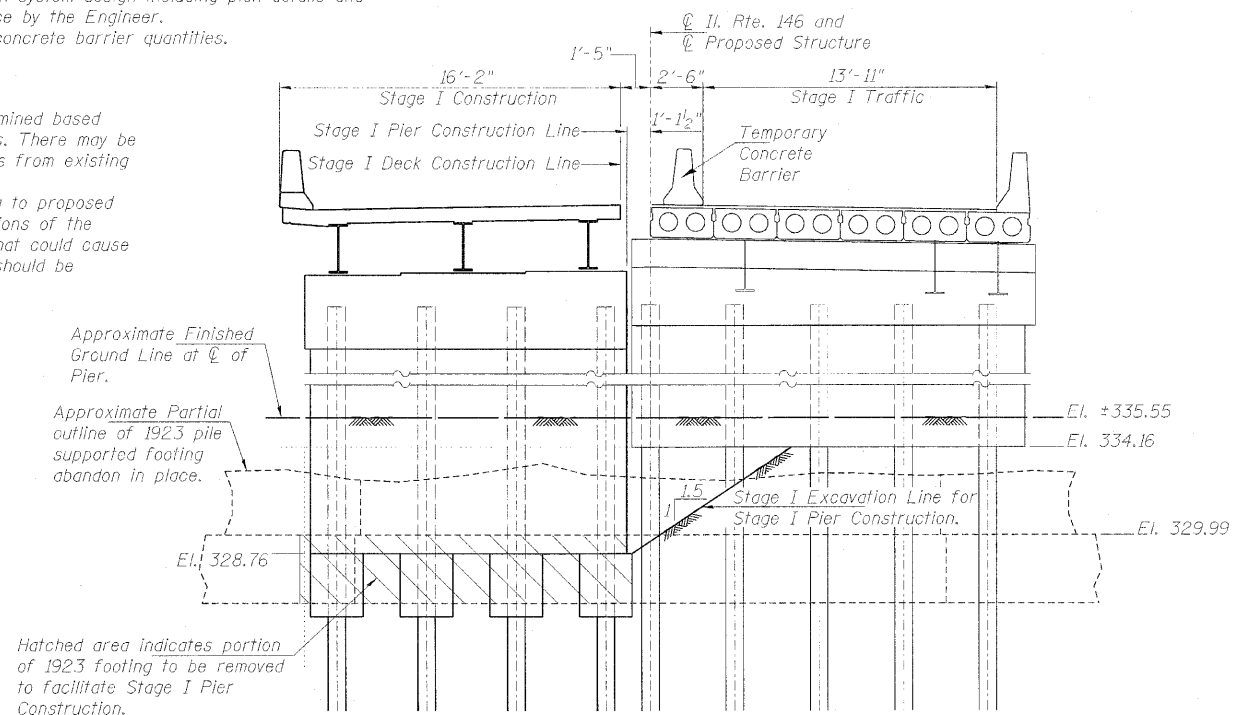
**PIER 1 - STAGE I CONSTRUCTION**  
Looking South

A cantilevered sheet piling design does not appear feasible at the piers and additional members or other retention systems may be necessary. The Contractor shall submit a temporary soil retention system design including plan details and calculations for review and acceptance by the Engineer.  
See roadway plans for temporary concrete barrier quantities.

**Note Well:**  
Proposed pile locations were determined based on existing 1923 & 1980 bridge plans. There may be some construction tolerance variations from existing plan pile locations.  
The Contractor shall check existing to proposed pile interference after removing portions of the existing footings. Any interferences that could cause a change in proposed pile locations should be reported to the Engineer.



**PIER 2 - STAGE I REMOVAL**  
Looking South



**PIER 2 - STAGE I CONSTRUCTION**  
Looking South

**STAGE I CONSTRUCTION DETAILS**  
**STRUCTURE NO. 076-0029**

PROFESSIONAL DESIGN FIRM LICENSE #184-001084

© Copyright Hanson Professional Services Inc. 2010



|               |             |
|---------------|-------------|
| 08H0131       | SHEET NO. 4 |
| DATE 05/21/10 | 29 SHEETS   |

|                           |              |             |                 |              |
|---------------------------|--------------|-------------|-----------------|--------------|
| F.A.P. RTE. 885           | SECTION 6B-2 | COUNTY Pope | TOTAL SHEETS 48 | SHEET NO. 23 |
| CONTRACT NO. 78141        |              |             |                 |              |
| ILLINOIS FED. AID PROJECT |              |             |                 |              |