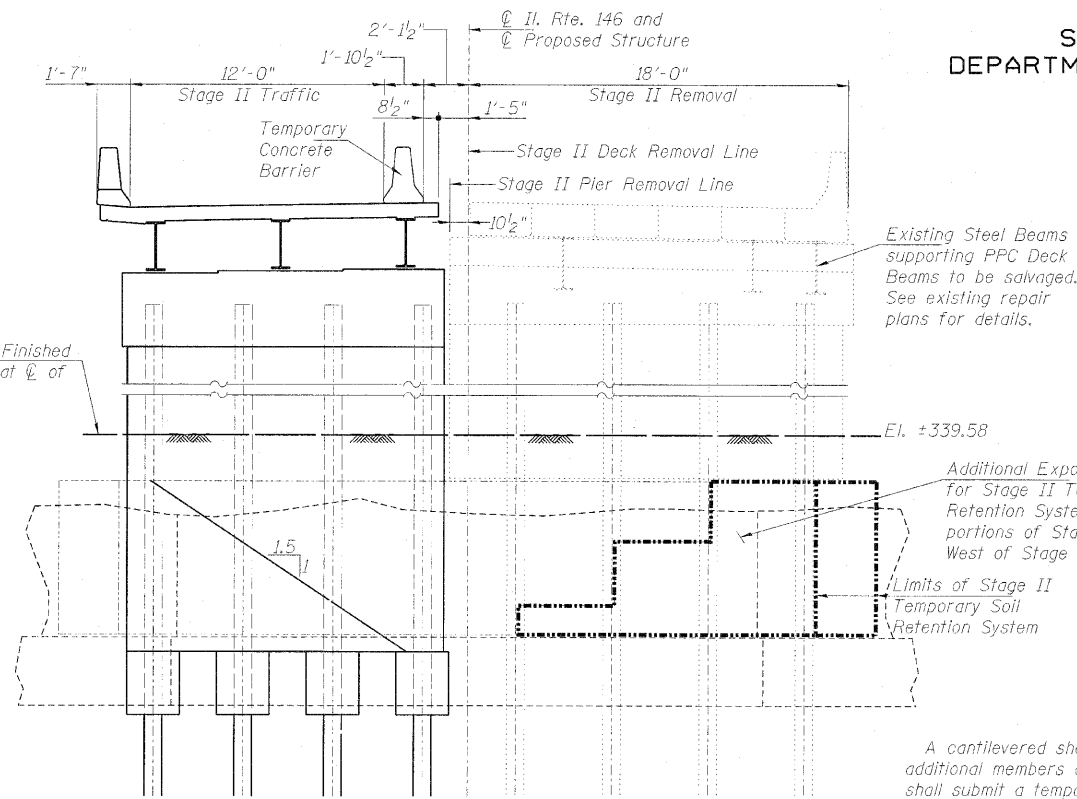
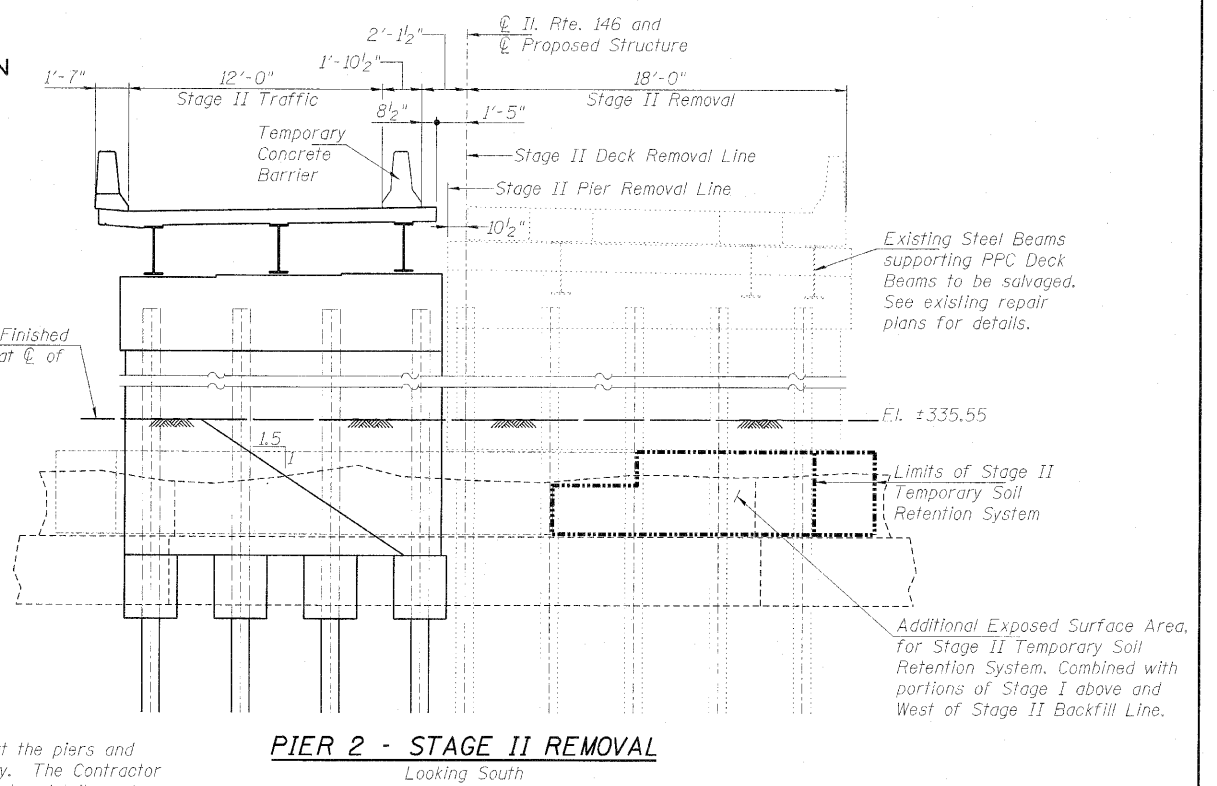


STATE OF ILLINOIS  
DEPARTMENT OF TRANSPORTATION

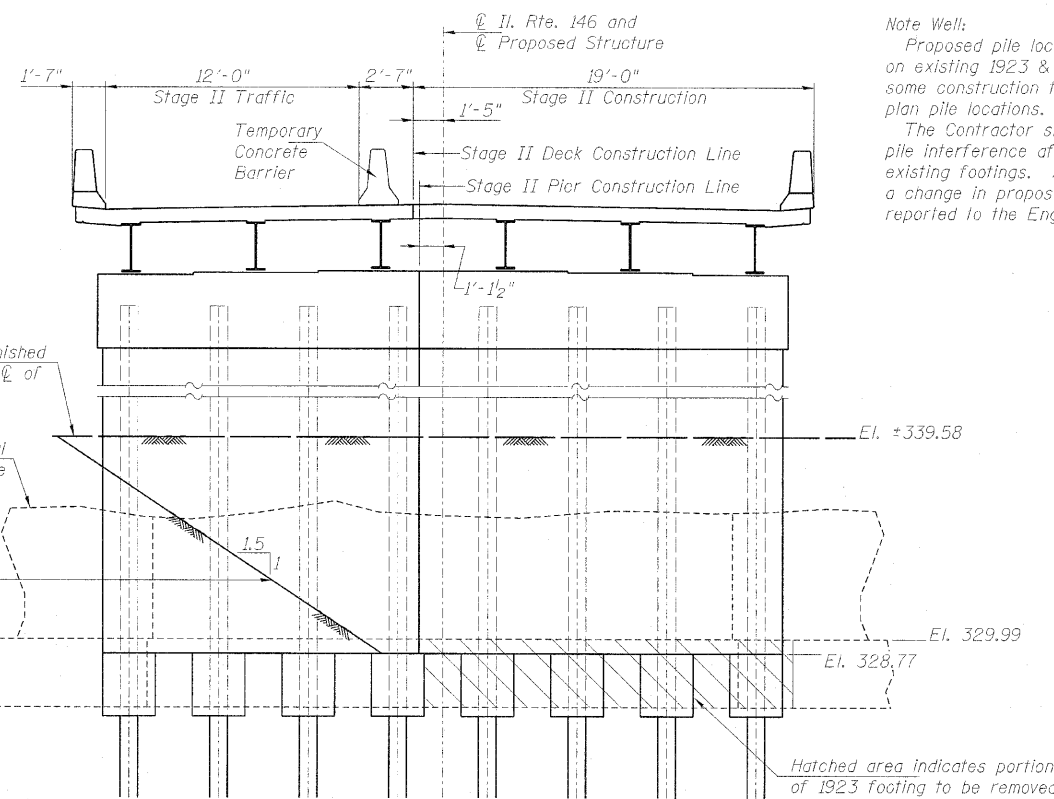


**PIER 1 - STAGE II REMOVAL**  
Looking South



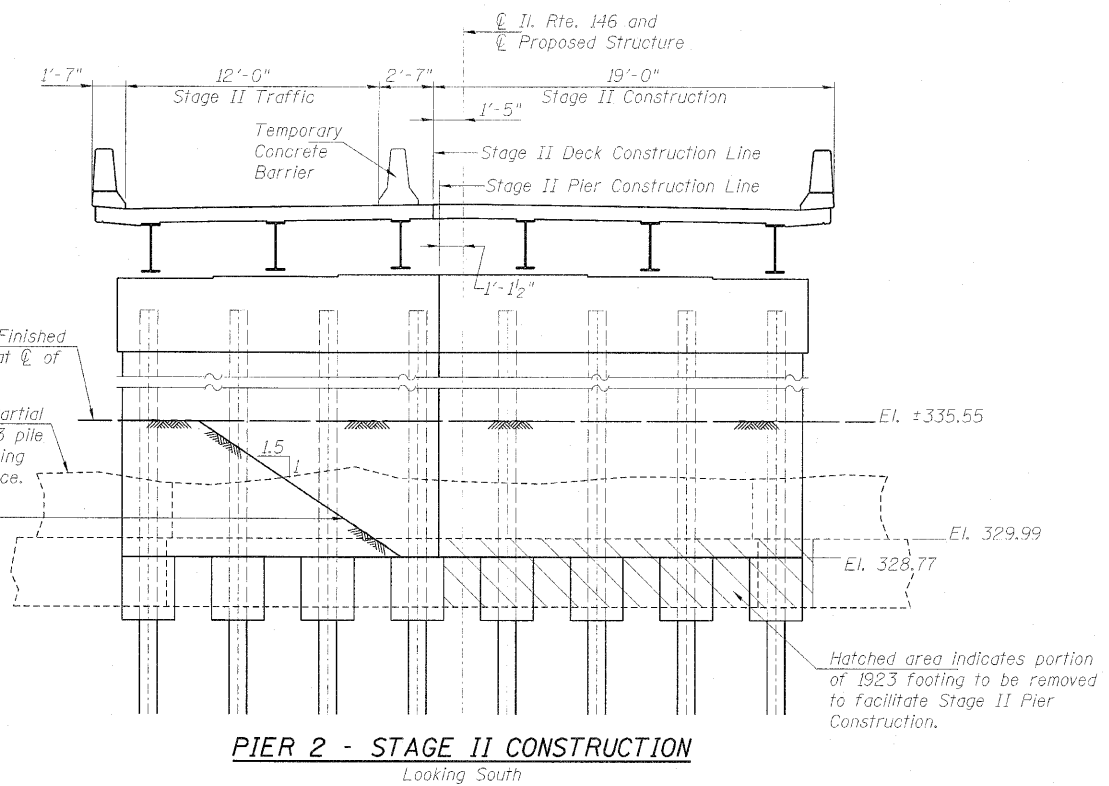
**PIER 2 - STAGE II REMOVAL**  
Looking South

A cantilevered sheet piling design does not appear feasible at the piers and additional members or other retention systems may be necessary. The Contractor shall submit a temporary soil retention system design including plan details and calculations for review and acceptance by the Engineer. See roadway plans for temporary concrete barrier quantities.



**PIER 1 - STAGE II CONSTRUCTION**  
Looking South

Note Well:  
Proposed pile locations were determined based on existing 1923 & 1980 bridge plans. There may be some construction tolerance variations from existing plan pile locations. The Contractor shall check existing to proposed pile interference after removing portions of the existing footings. Any interferences that could cause a change in proposed pile locations should be reported to the Engineer.



**PIER 2 - STAGE II CONSTRUCTION**  
Looking South

**STAGE II CONSTRUCTION DETAILS**  
**STRUCTURE NO. 076-0029**

PROFESSIONAL DESIGN FIRM LICENSE #184-001084  
© Copyright Hanson Professional Services Inc. 2010



JOB NO. 08H0131	SHEET NO. 5	F.A.P. RTE. 885	SECTION 6B-2	COUNTY Pope	TOTAL SHEETS 48	SHEET NO. 24
DATE 05/21/10	29 SHEETS	CONTRACT NO. 78141		ILLINOIS FED. AID PROJECT		