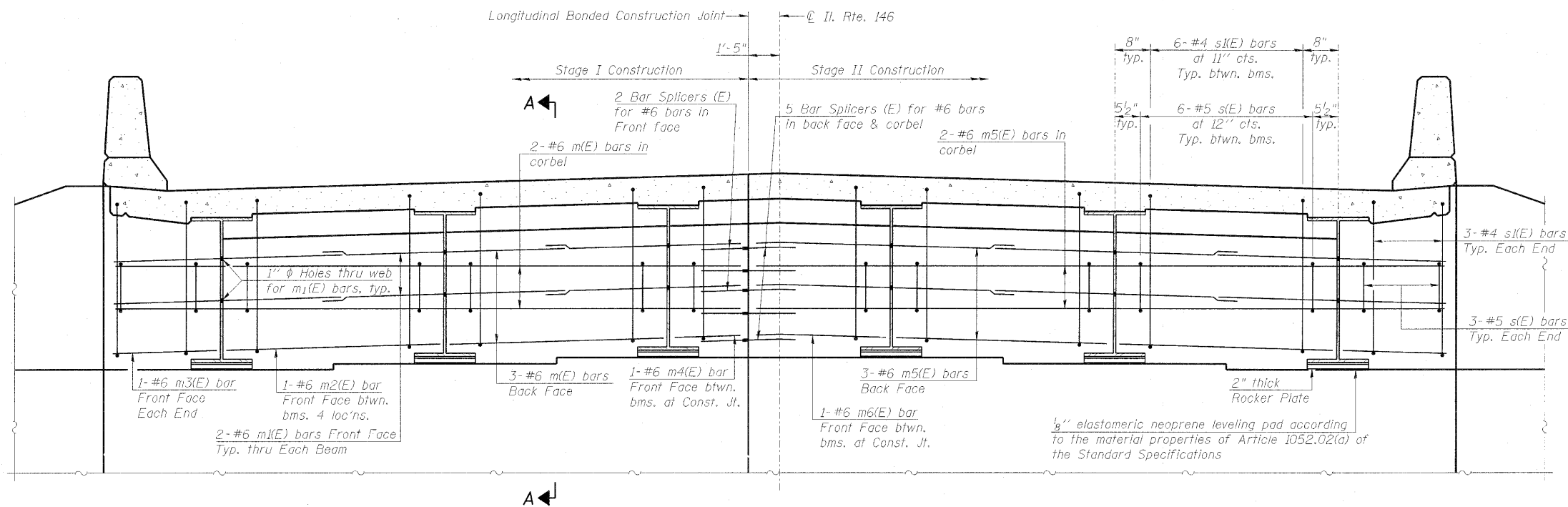
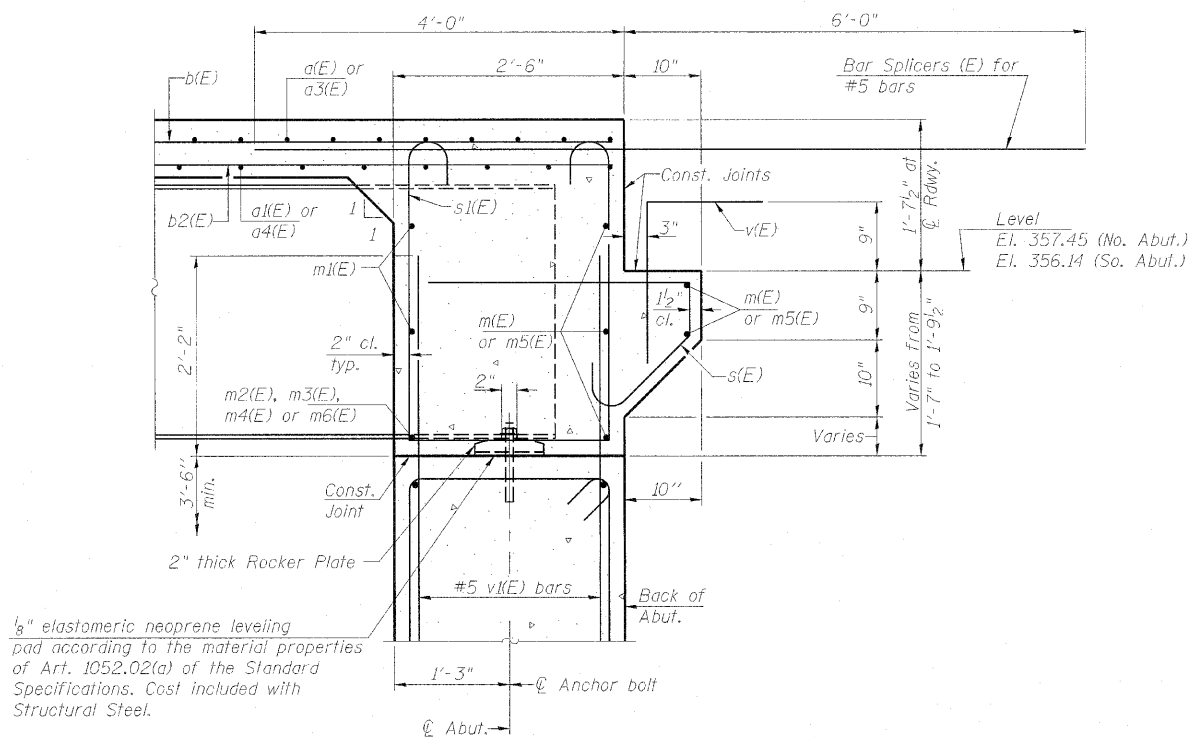


STATE OF ILLINOIS
DEPARTMENT OF TRANSPORTATION



DIAPHRAGM ELEVATION AT SOUTH ABUTMENT
Looking South (South Abutment shown North Abutment similar)



Notes:
Reinforcement bars in diaphragm are billed with superstructure on sheet 13 of 29.
Concrete in diaphragm is included with Concrete Superstructure on sheet 13 of 29.
For details of bars s(E) & s1(E) see sheet 13 of 29.
The s(E) and s1(E) bars shall be placed parallel to the beams. Spacing for these bars shall be at right angles to the beams.

MIN. BAR LAP
#6 bar = 3'-4"

SECTION A-A

**INTEGRAL ABUTMENT
DIAPHRAGM DETAILS
STRUCTURE NO. 076-0029**

PROFESSIONAL DESIGN FIRM LICENSE #184-001084

© Copyright Hanson Professional Services Inc. 2010



OP. NO. 08H0131	SHEET NO. 14	F.A. RTE. 885	SECTION 6B-2	COUNTY Pope	TOTAL SHEETS 48	SHEET NO. 33
DATE 05/21/10	29 SHEETS	CONTRACT NO. 78141		ILLINOIS FED. AID PROJECT		