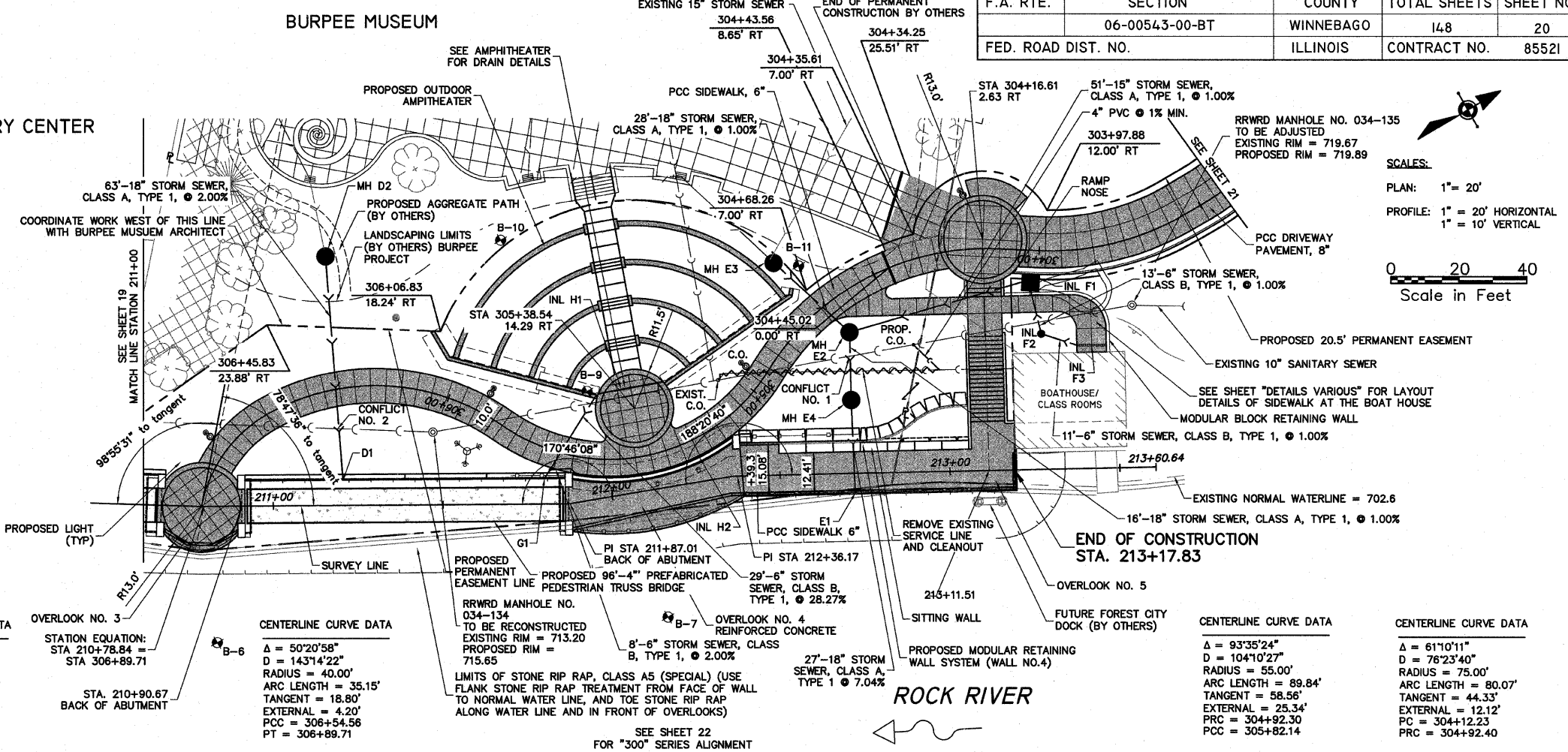
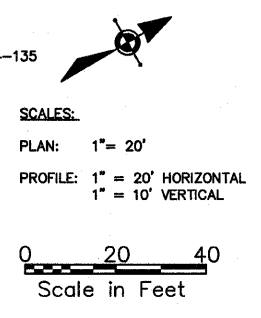


BURPEE MUSEUM

DISCOVERY CENTER



F.A. R.I.E.	SECTION	COUNTY	TOTAL SHEETS	SHEET NO.
	06-00543-00-BT	WINNEBAGO	148	20
FED. ROAD DIST. NO.		ILLINOIS	CONTRACT NO.	85521



**\* END OF PIPE D1**  
18" PIPE WALL OPENING  
211+20.6, 7.5' LT  
IE = 709.79

**MH D2**  
RESTRICTED DEPTH  
MANHOLE, 4' DIA. WITH  
TYPE 1 F&G  
306+30.9, 32.9' RT  
RIM = 719.53  
IE = 713.64 (W) IN  
IE = 711.05 (E) OUT

**\* END OF PIPE E1**  
18" PIPE WALL OPENING  
212+72.0, 5.8' LT  
IE = 702.15

**MH E2**  
MANHOLE TYPE A, 4' DIA.  
TYPE 1 F&G CLOSED LID  
304+66.3, 10.7' LT  
RIM = 720.25  
IE = 715.67 (N) IN  
IE = 712.13 (EX 15' W) IN  
IE = 712.07 (E) OUT  
(NEW CONNECTION)  
IE (EX 15") = 712.03  
(PLUG)

**MH E4**  
MANHOLE TYPE A, 4' DIA.  
212+71.4, 21.6' LT  
TYPE 1 F&G  
RIM = 718.10  
IE = 711.53 (W) IN  
IE = 704.05 (E) OUT

**INL F1**  
INLET SPECIAL No.2  
304+02.3, 7.0' LT  
EP = 721.98 TC 722.38  
IE = 716.30 (E) IN  
IE = 716.18 OUT

**INL F2**  
INLET TYPE A, WITH  
TYPE 8 GRATE  
303+98.8, 24.6' LT  
RIM = 718.23  
IE = 713.64 (W) IN  
IE = 716.43 OUT

**INL F3**  
TRENCH DRAIN  
MODEL:ACO K100S (OR EQUAL)  
PART No. 99388 WITH K300  
IN-LINE CATCH BASIN AND  
No. 98866 GRATE  
RIM = 719.15  
IE = 716.50  
303+84.7, 29.1' LT  
303+91.0, 28.2' LT

**\* END OF PIPE G1**  
6" PIPE WALL OPENING  
211+79.9, 7.5' LT  
IE = 706.00

**\* ANTI-SEEP COLLAR REQUIRED**

**CONFLICT NO. 1**  
BOT STM = 711.43  
TOP SAN = 708.92  
SAN INV = 708.10

**CONFLICT NO. 2**  
BOT STM = 710.10  
TOP SAN = 708.63  
SAN INV = 707.80

**INL H1**  
TRENCH DRAIN  
MODEL:ACO KS100S (OR EQUAL)  
PART No. 00785 TO 06770  
WITH KS020 IN-LINE CATCH BASIN  
AND No. 98883 GRATE  
RIM = 718.11  
IE N. = 717.43  
IE S. = 717.33  
IE PERFORATED DRAIN = 716.00  
IE 6" OUT = 714.20  
305+22.9, 19.0' RT

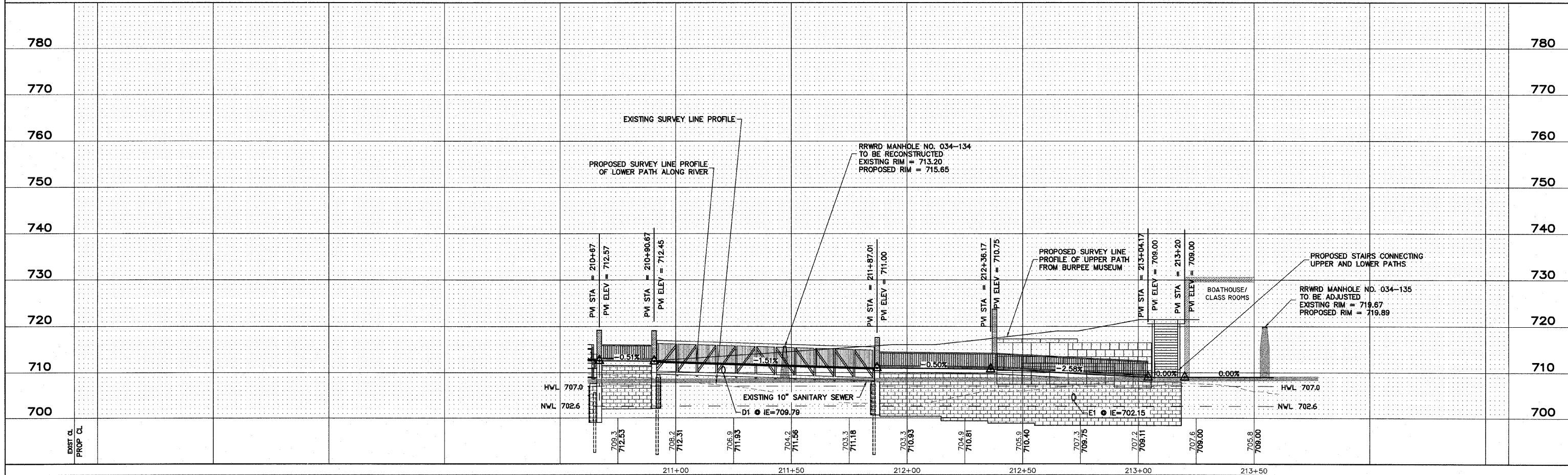
**INL H2**  
TRENCH DRAIN  
MODEL:ACO SYSTEM 2000 (OR EQUAL)  
PART No. 00786 SLOTTED TOP  
WITH 05620 IN-LINE CATCH BASIN  
CENTERLINE RADIUS = 60.25'  
RIM = 717.76  
IE = 717.00  
305+13.2, 5.2' LT  
305+56.4, 5.2' LT

CENTERLINE CURVE DATA

Δ = 63°49'59"	Δ = 50°20'58"
D = 88°08'50"	D = 143°14'22"
RADIUS = 65.00'	RADIUS = 40.00'
ARC LENGTH = 72.42'	ARC LENGTH = 35.15'
TANGENT = 40.48'	TANGENT = 18.80'
EXTERNAL = 11.58'	EXTERNAL = 4.20'
PRC = 305+82.14	PRC = 306+54.56
PCC = 306+54.56	PT = 306+89.71

CENTERLINE CURVE DATA

Δ = 93°35'24"	Δ = 61°10'11"
D = 104°10'27"	D = 76°23'40"
RADIUS = 55.00'	RADIUS = 75.00'
ARC LENGTH = 89.84'	ARC LENGTH = 80.07'
TANGENT = 58.56'	TANGENT = 44.33'
EXTERNAL = 25.34'	EXTERNAL = 12.12'
PRC = 304+92.30	PRC = 304+12.23
PCC = 305+82.14	PRC = 304+92.40



<p>SHEET REVIEW</p> <table border="1" style="width:100%; border-collapse: collapse;"> <tr> <th>AGENCY</th> <th>DATE</th> </tr> <tr> <td> </td> <td> </td> </tr> </table>	AGENCY	DATE			<p>REVISIONS</p> <table border="1" style="width:100%; border-collapse: collapse;"> <tr> <th>NO.</th> <th>ITEM</th> <th>DATE</th> </tr> <tr> <td> </td> <td> </td> <td> </td> </tr> </table>	NO.	ITEM	DATE				<p>SCALE: Hor. 1"=20' Ver. 1"=5'</p> <p>DRAWN BY: MS</p> <p>CHECKED BY: JWH</p> <p>DATE: AUGUST 13, 2010</p>	<p><b>McClure</b> Engineering Associates, Inc.</p> <p>7282 Argus Drive Rockford, Illinois 61107-5837 (815) 398-2332 FAX (815) 398-2496</p> <p>Design Firm License: Illinois 184-000816 Copyright 2010 By McClure Engineering Associates, Inc.</p>	<p><b>PLAN &amp; PROFILE - 211+00 TO END</b></p> <p>RIVERWALK MUSEUM CAMPUS</p> <p>711 NORTH MAIN STREET ROCKFORD, IL</p> <p>FILE:H:\08-008 RIVERWALK MUSEUM\DESIGN\DRAWINGS\08-008 PP 211+00 TO END.DWG JOB:04-28-10-008</p>	<p>SHEET NO.</p> <p style="text-align: center;"><b>20</b></p> <p style="text-align: center;">OF</p> <p style="text-align: center;"><b>148</b></p>
AGENCY	DATE														
NO.	ITEM	DATE													

H:\08-008 RIVERWALK MUSEUM\DESIGN\DRAWINGS\08-008 PP 211+00 TO END.DWG, 211+00 TO END, 11/3/2010 10:33:45 AM, 11, JWH