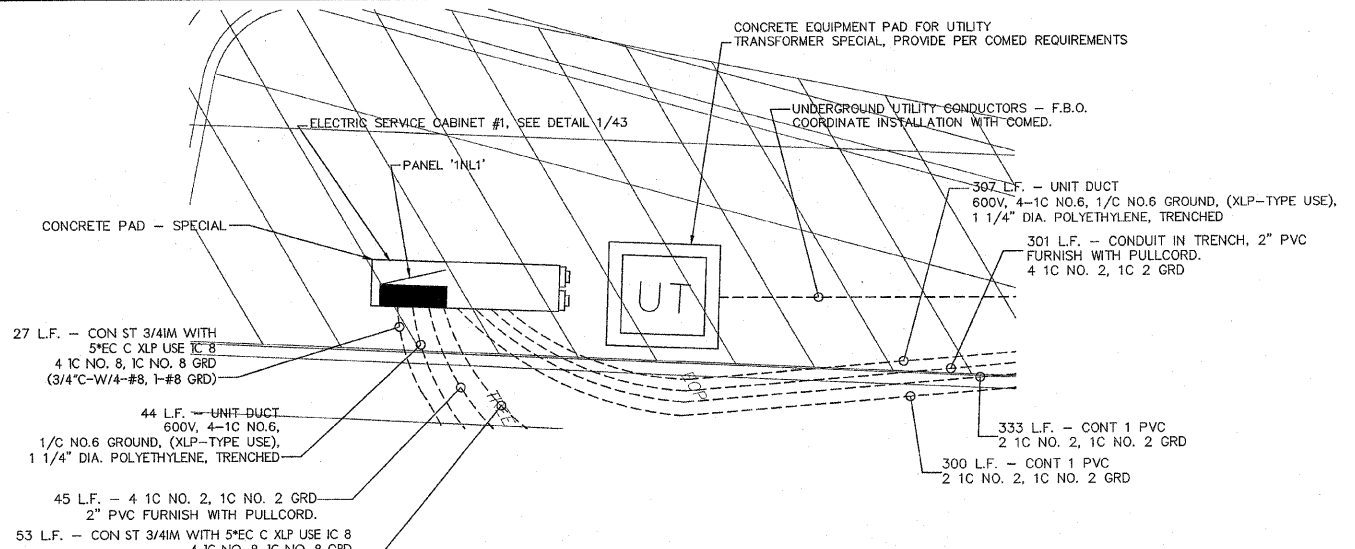
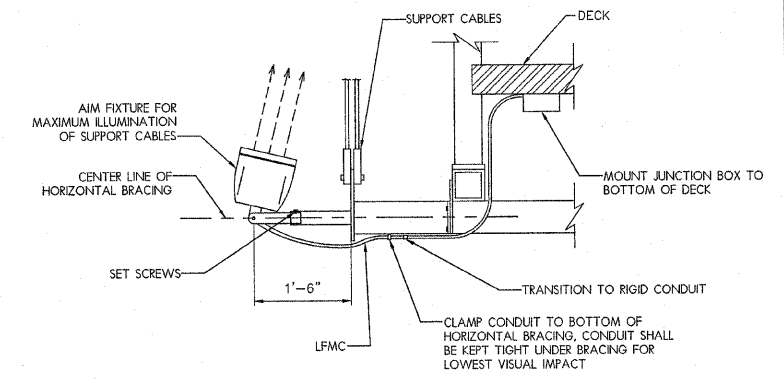


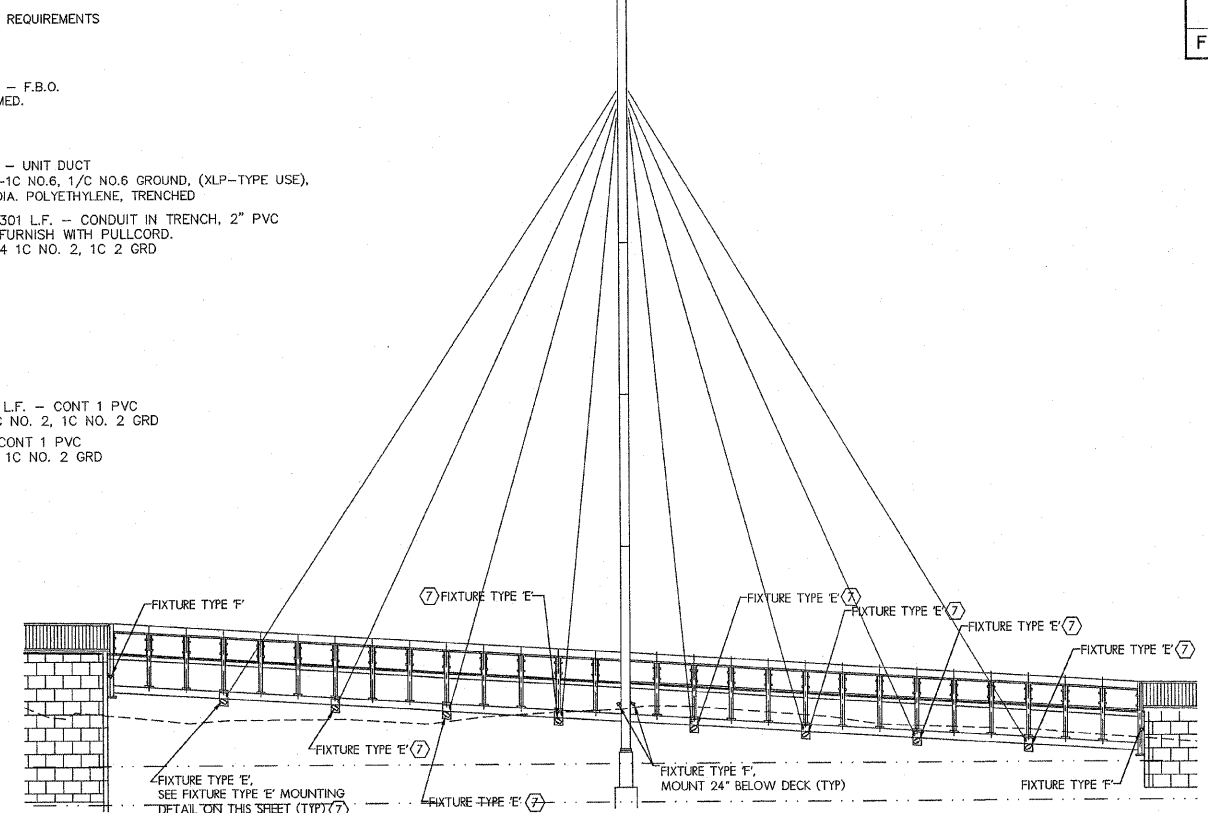
F.A. RTE.	SECTION	COUNTY	TOTAL SHEETS	SHEET NO.
	06-00543-00-BT	WINNEBAGO	71	---
FED. ROAD DIST. NO.	ILLINOIS		CONTRACT NO.	



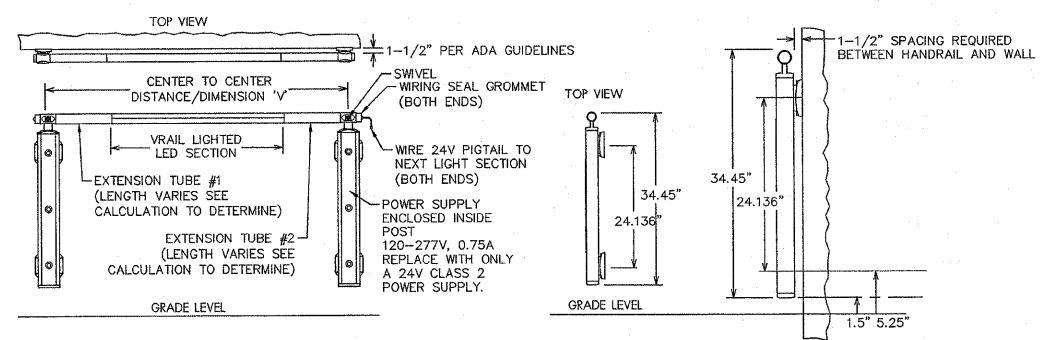
2 ENLARGED ELECTRICAL PLAN
SCALE: 1" = 1'-0"



4 FIXTURE TYPE 'E' MOUNTING DETAIL
SCALE: NONE



3 BRIDGE ELEVATION PLAN
SCALE: NONE

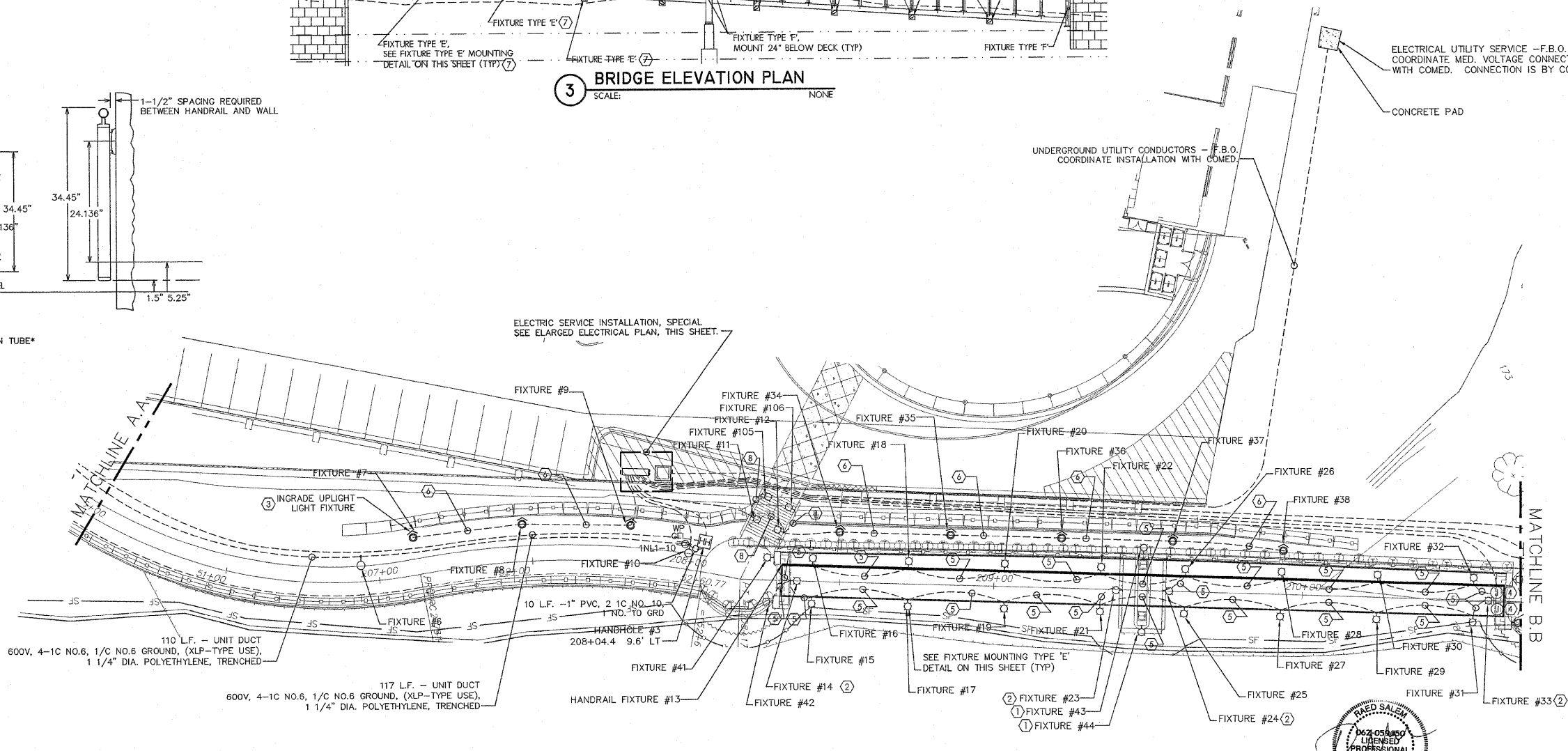


5 HANDRAIL MOUNTING DETAIL
SCALE: NO SCALE

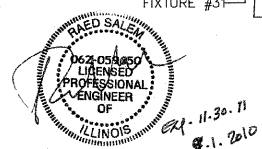
EXTENSION TUBE LENGTH (FOR STRAIGHT SECTIONS).
DIMENSION "V" LIGHTED SECTION - $3.25 \times \text{RESULT} / 2 = \text{LENGTH PER EXTENSION TUBE}^*$
EXAMPLE: $60 - 41.75 = 18.25 / 2 = 9.125 \times 2 = 18.25 \times 2 = 36.5 \times 2 = 73 \times 2 = 146 \times 2 = 292$

KEYED NOTES:

- MOUNT AT 10' ABOVE DECK, AIM FOR MAX. ILLUMINATION OF VERTICAL STRUCTURE.
- MOUNT TYPE 'F' FLOODLIGHT BELOW BRIDGE DECK. MOUNT TO CONCRETE SUPPORT STRUCTURE 24" BELOW DECKING. HOMERUN TO PANEL INL1-13(15).
- INSTALL IN-GRADE UPLIGHT FIXTURE FLUSH WITH FINISHED GRADE. HOMERUN TO INL1-6(8).
- MOUNT JUNCTION BOX BELOW BRIDGE DECK AND RUN CONDUIT THROUGH ABUTMENT WALL TO HOMERUN IN CABINET.
- 40 L.F. - CON ST 1"IM WITH 5"EC C XLP USE IC 8
4 IC NO. 8, 1C NO. 8 GRD
(1" C-W/4-#8, 1-#8 GRD)
- 46 L.F. - CON ST 1"IM WITH 5"EC C XLP USE IC 8
4 IC NO. 8, 1C NO. 8 GRD
(1" C-W/4-#8, 1-#8 GRD)
- TYPICAL FOR OTHER SIDE OF BRIDGE.
- 20 L.F. - CON ST 1"IM WITH 5"EC C XLP USE IC 8
4 IC NO. 8, 1C NO. 8 GRD
(1" C-W/4-#8, 1-#8 GRD)



1 ELECTRICAL PLAN-206+00 TO 211+00
SCALE: 1" = 20'-0"



Larson & Darby Group
Architects Engineers Planners

SHEET REVIEW	
AGENCY	DATE

REVISIONS		
NO.	ITEM	DATE

SCALE: Hor. 1" = 20' Ver. 1" = 5'
DRAWN BY: MS
CHECKED BY: JWH
DATE: OCTOBER 1, 2010

7282 Argus Drive
(815) 398-2832
Design Firm License: Illinois 184-000816
Copyright 2010 By McClure Engineering Associates, Inc.

McClure
Engineering Associates, Inc.
Rockford, Illinois 6107-5837
FAX (815) 398-2496

ELECTRICAL PLAN - 206+00 TO 211+00

711 NORTH MAIN STREET RIVERWALK MUSEUM CAMPUS ROCKFORD, IL

FILE: P:\20020 MCCLURE - ROCKFORD RIVERWALK\DWG\ELEC\08-008 PP 206+00 TO 211+00.DWG JOB: 08-24-10-008