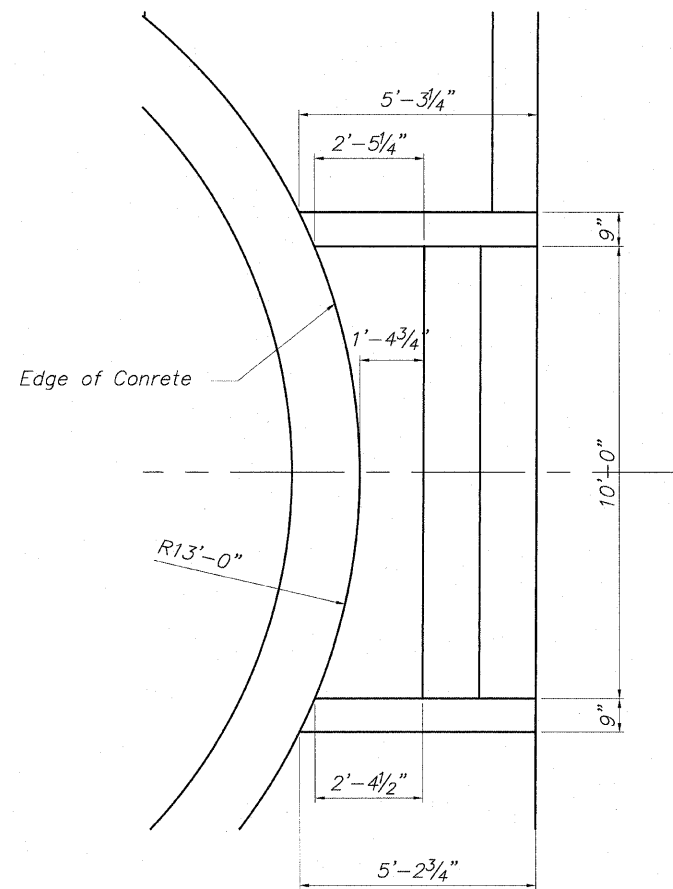
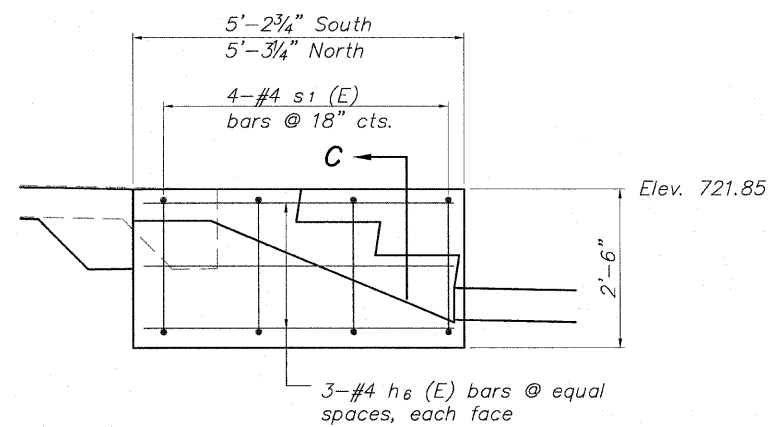


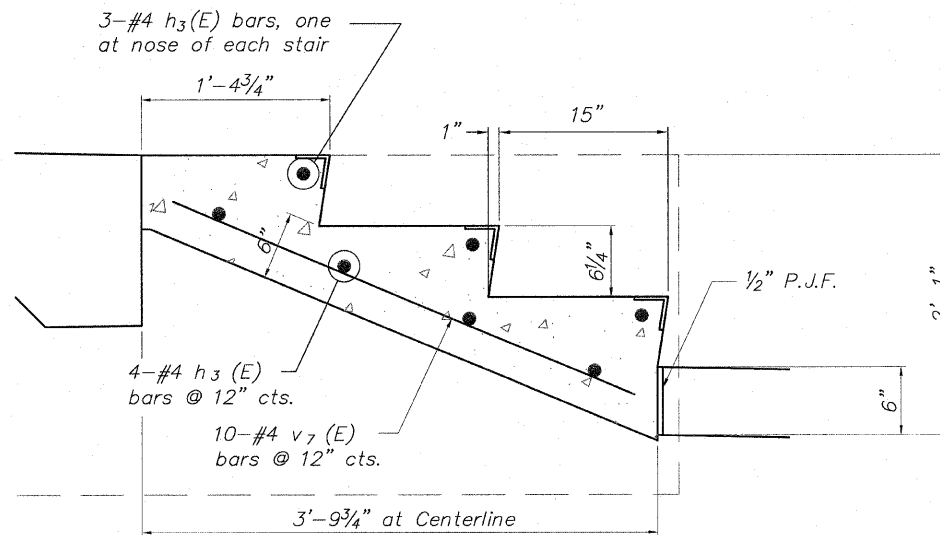
STATE OF ILLINOIS
DEPARTMENT OF TRANSPORTATION



UPPER STAIRWAY PLAN
not to scale



SIDEWALL ELEVATION
Looking North Showing
Reinforcement
not to scale

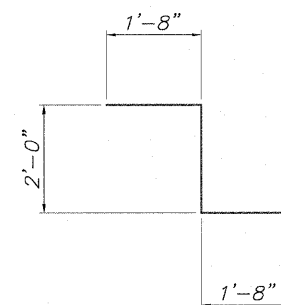


STAIR TREAD DETAIL

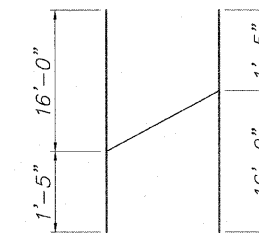
not to scale

MINIMUM BAR LAP

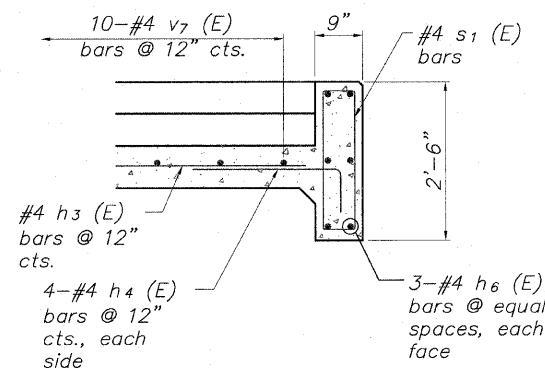
- No. 4 bars 1'-8"
- No. 5 bars 2'-2"
- No. 6 bars 2'-7"
- No. 7 bars 3'-5"



BAR z (E)

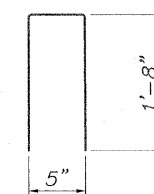


BAR h (E)
Cutting Diagram

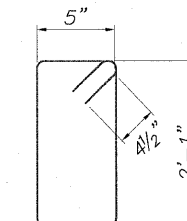


PARTIAL SECTION C-C

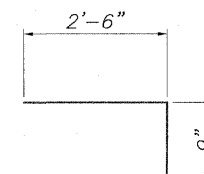
not to scale



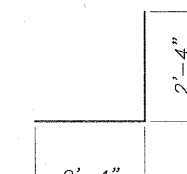
BAR s (E)



BAR s1 (E)



BAR h4 (E)

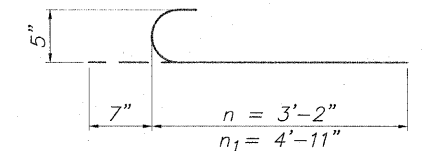


BAR h5 (E)

BILL OF MATERIALS
NORTH STAIRS AT BOAT HOUSE

Bar	No.	Size	Length	Shape
* h (E)	13	#4	17'-5"	—
h1 (E)	12	#4	11'-2"	—
h2 (E)	2	#4	28'-4"	—
h3 (E)	56	#4	9'-8"	—
h4 (E)	36	#4	3'-3"	┌
h5 (E)	3	#4	4'-8"	┌
h6 (E)	12	#4	4'-10"	—
n (E)	7	#5	3'-9"	┌
n1 (E)	28	#5	5'-6"	┌
S (E)	27	#4	3'-9"	┌
S1 (E)	28	#4	5'-9"	┌
t (E)	27	#4	5'-2"	—
t1 (E)	50	#5	5'-2"	—
v (E)	35	#5	6'-4"	—
v1 (E)	5	#4	3'-2"	—
v2 (E)	22	#4	4'-11"	—
v3 (E)	27	#4	6'-0"	—
v4 (E)	10	#4	27'-7"	—
v5 (E)	6	#4	28'-2"	—
v6 (E)	3	#4	2'-3"	—
v7 (E)	10	#4	3'-8"	—
w (E)	10	#4	12'-1"	—
w1 (E)	40	#4	5'-7"	—
w2 (E)	10	#4	2'-3"	—
z (E)	50	#4	5'-4"	┌
Concrete Structures		Cu. Yd.	20.9	
Protective Coat		Sq. Yd.	46	
Reinforcement Bars (Epoxy Coated)		Pound	2,665	
Rubbed Finish		Sq. Ft.	415	
Furnished Excavation		Cu. Yd.	30	

* Order bars full length, cut 5 bars and use remainder at opposite end of opposite face, see cutting diagrams



BAR n (E) & n1 (E)

NORTH STAIRS AT BOAT HOUSE
STAIRWAY DETAILS
PEDESTRIAN RIVERWALK
ALONG THE ROCK RIVER
WINNEBAGO COUNTY
SECTION NO. 06-00543-00-BT
STATION 213+11.51

DESIGNED	CTB
CHECKED	AAG
DRAWN	JAW
CHECKED	JWH

McClure
Engineering Associates, Inc.
7282 Argus Drive
(815) 398-2332
Rockford, Illinois 61107-5837
Fax (815) 398-2496
Design Firm License: Illinois #184-000816
Copyright 2010, By McClure Engineering Associates, Inc.

SHEET NO. 5
5 SHEETS

F.A. RTE.	SECTION	COUNTY	TOTAL SHEETS	SHEET NO.
	06-00543-00-BT	WINNEBAGO	148	50
FED. ROAD DIST. NO.	ILLINOIS	FED. AID PROJECT	CONTRACT NO. 85521	