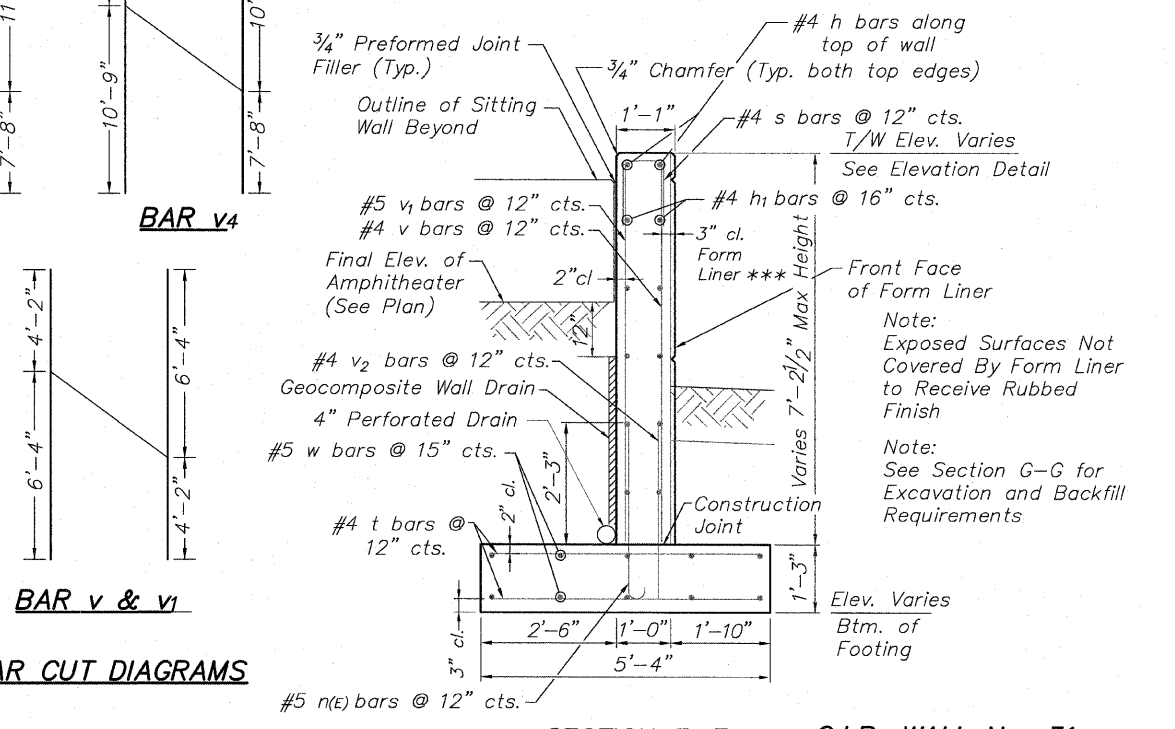
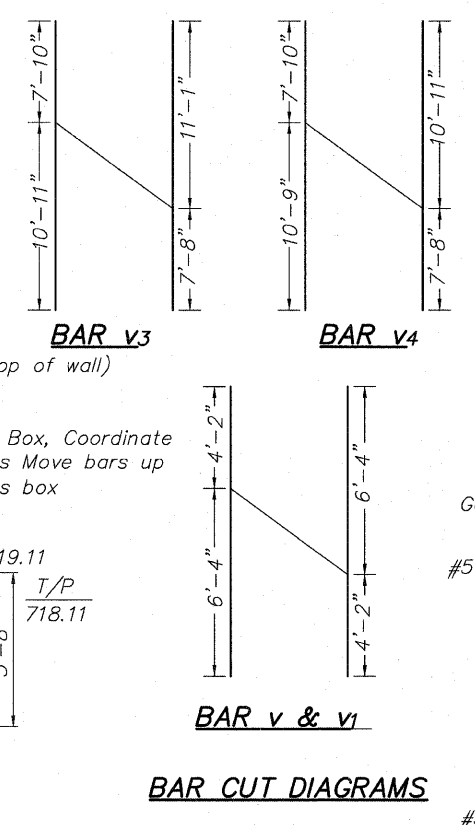
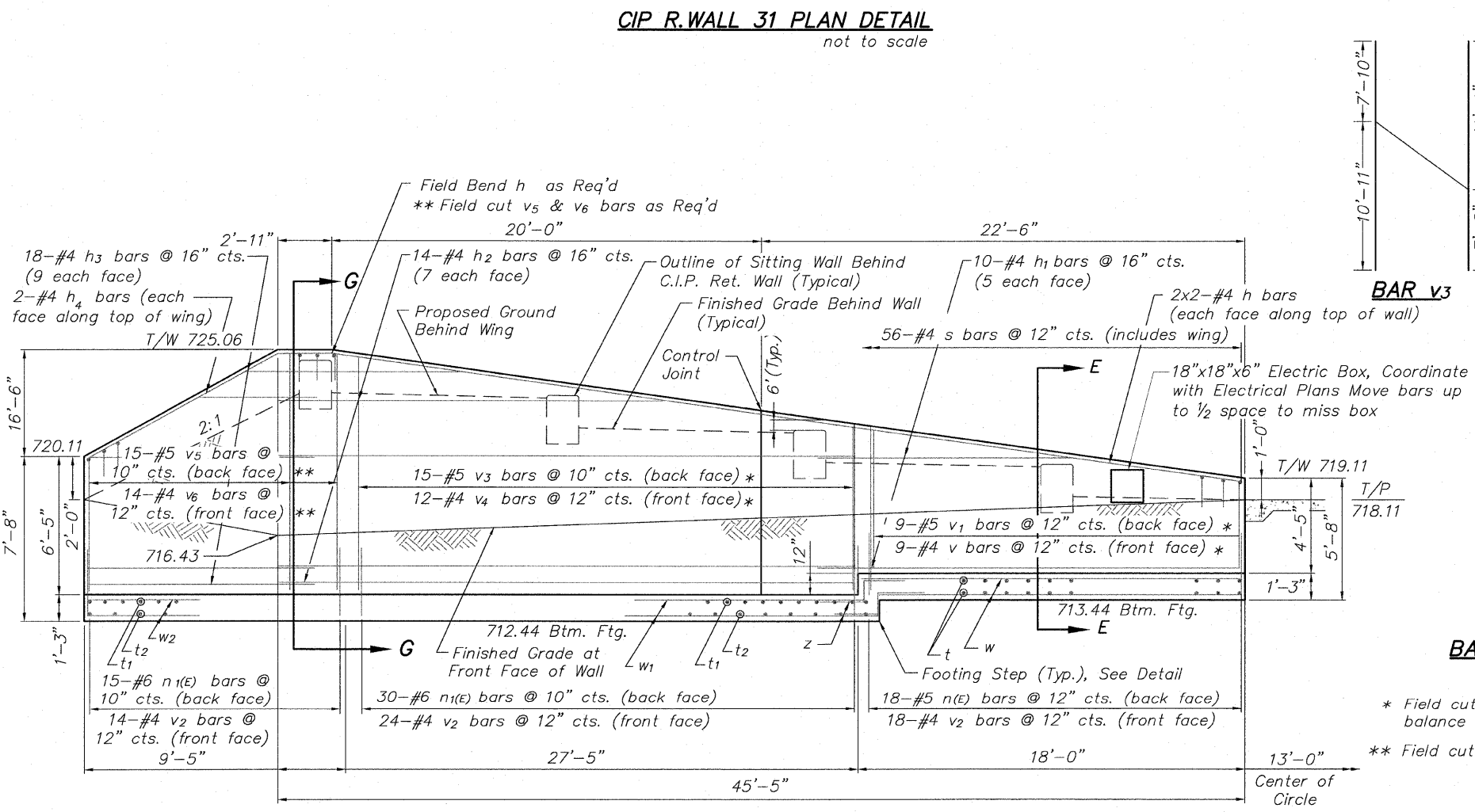
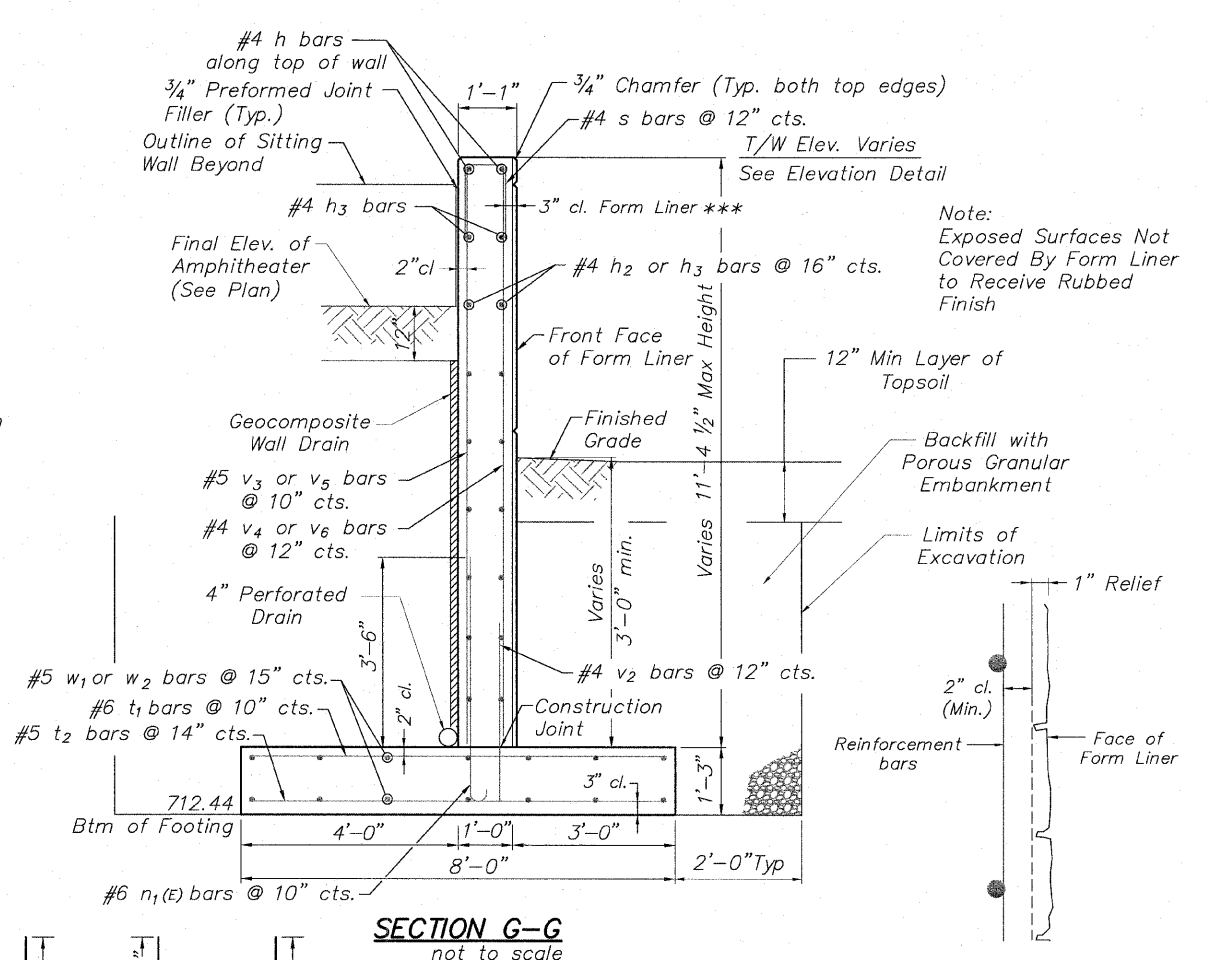
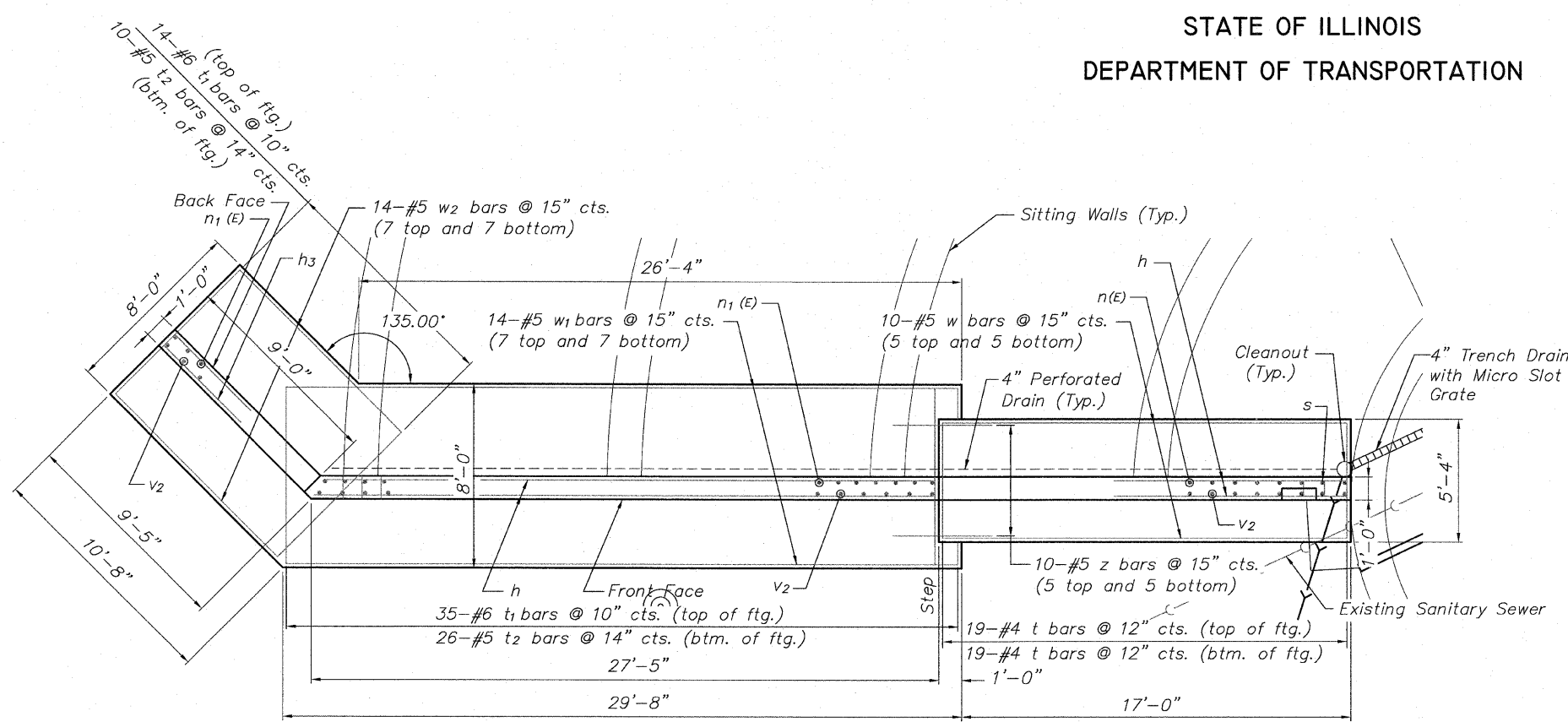


STATE OF ILLINOIS  
DEPARTMENT OF TRANSPORTATION



\* Field cut bars & use remaining balance in opposite end.  
\*\* Field cut bar(s) to fit

**BILL OF MATERIAL**  
Refer to Next Sheet

**C.I.P. WALL No. 31  
ELEVATION & DETAILS  
RIVERWALK AMPHITHEATER  
WINNEBAGO COUNTY  
SECTION NO. 06-00543-00-BT  
STATION 305+38.64**

DESIGNED	CTB
CHECKED	AAG
DRAWN	JAW
CHECKED	JWH

**CIP R. WALL 31 ELEVATION DETAIL**  
not to scale

**McClure**  
Engineering Associates, Inc.  
7282 Argus Drive  
Rockford, Illinois 61107-5837  
(815) 398-2332 Fax (815) 398-2496  
Design Firm License: Illinois #184-000816  
Copyright 2010 By McClure Engineering Associates, Inc.

SHEET NO. 2  
5 SHEETS

F.A. RTE.	SECTION	COUNTY	TOTAL SHEETS	SHEET NO.
	06-00543-00-BT	WINNEBAGO	148	52
FED. ROAD DIST. NO.	ILLINOIS	FED. AID PROJECT	CONTRACT NO. 85521	

H:\08-008 RIVERWALK AMPHITHEATER\DRAWINGS\STRUCTURAL\GPIE08-008 AMPHITHEATER.DWG. AMPH DETAIL. 10/26/2010 2:09:56 PM. JT