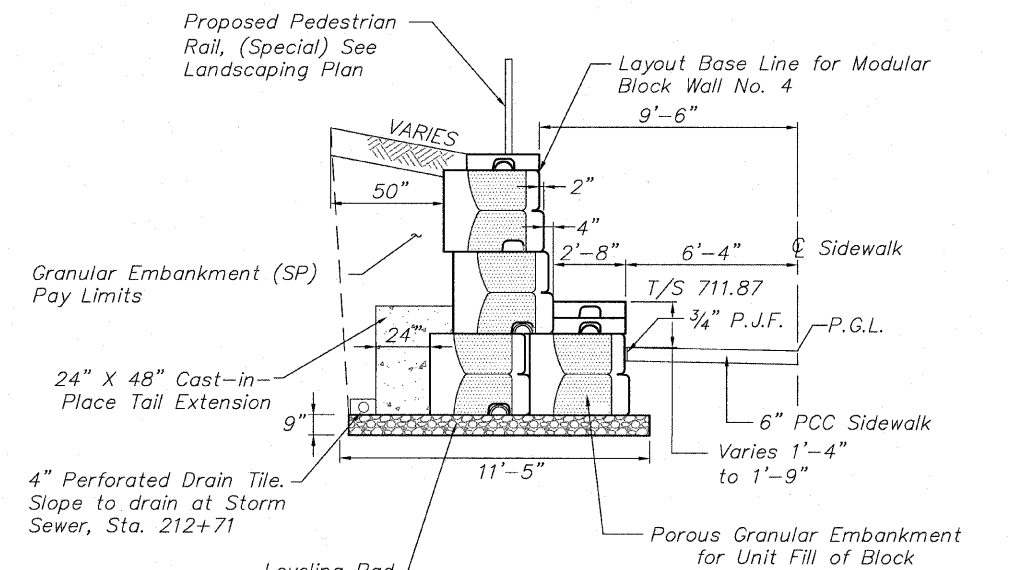
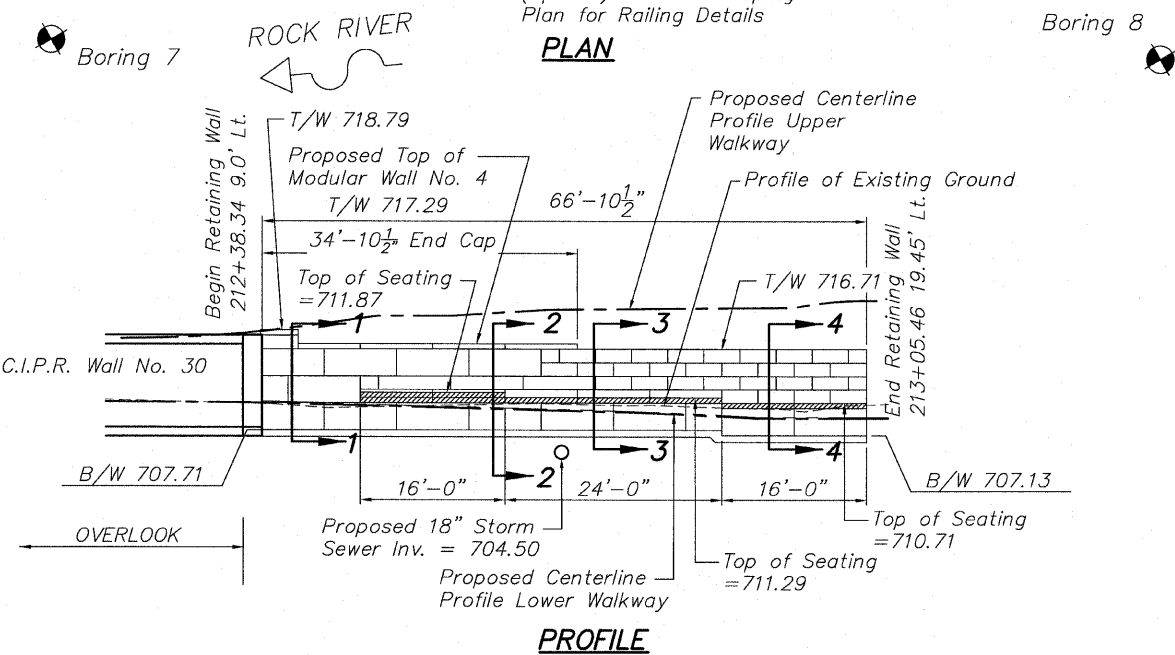
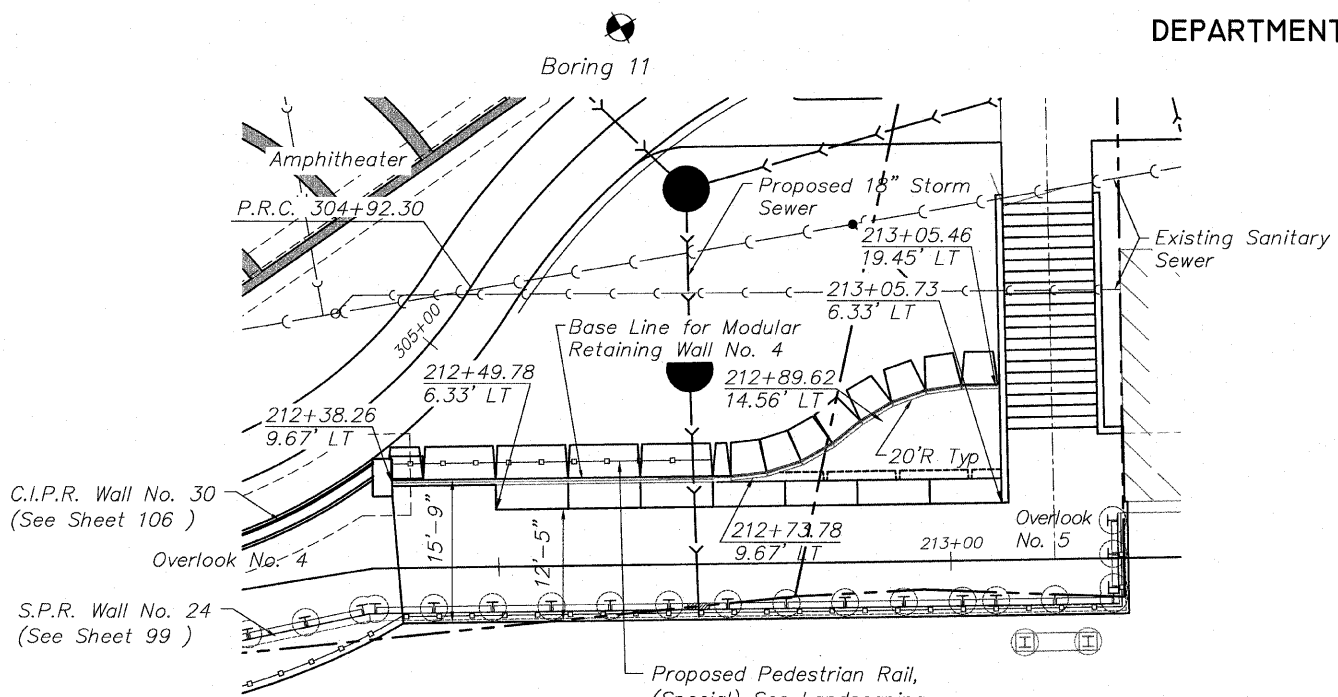
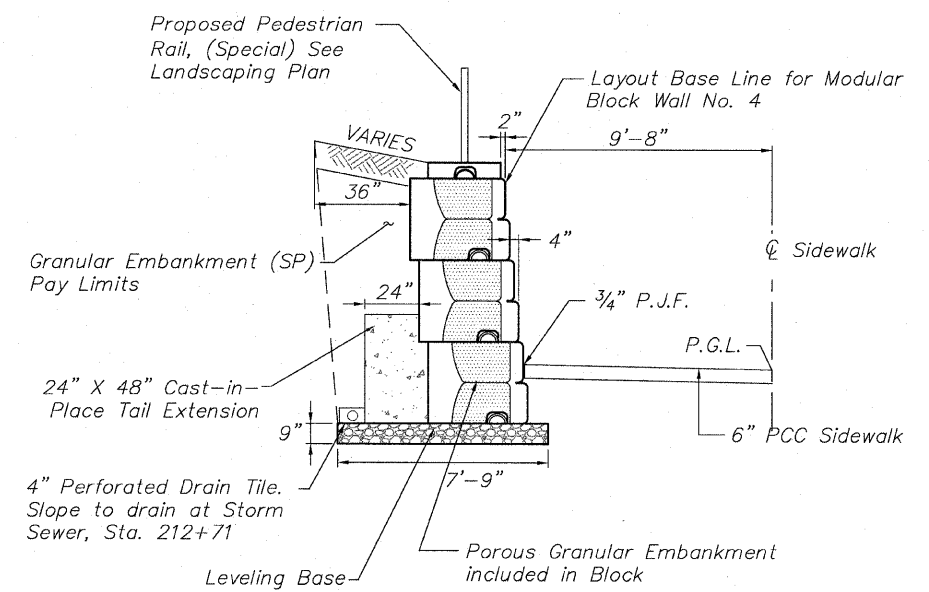


STATE OF ILLINOIS
DEPARTMENT OF TRANSPORTATION

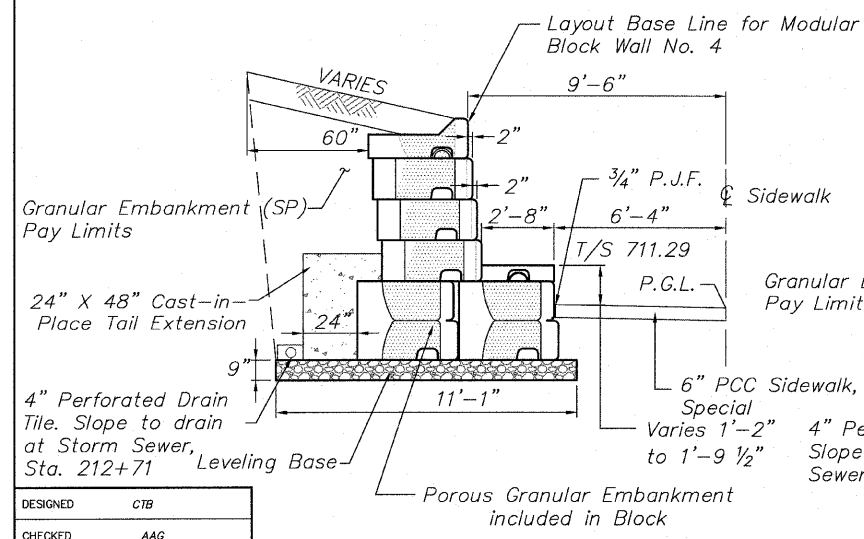
PLAN: 1" = 10'
PROFILE: 1" = 10' HORIZONTAL
1" = 10' VERTICAL
Scale in Feet



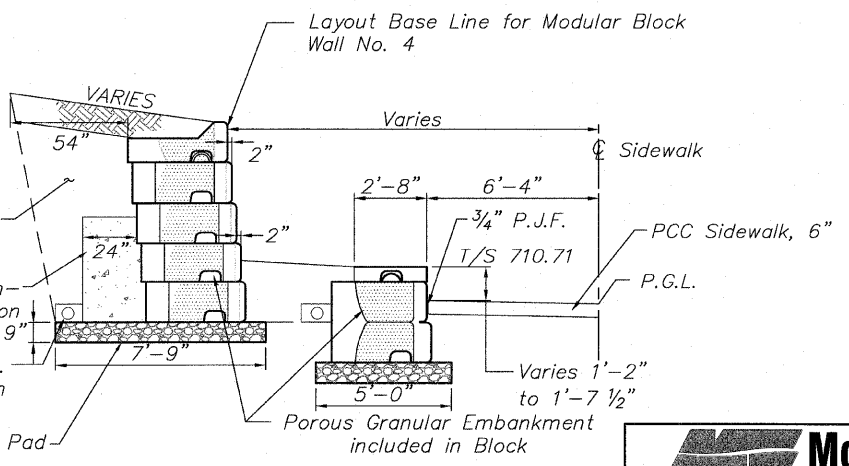
DETAIL 2
Sta. 212+49.78 to Sta. 212+65.78



DETAIL 1
Sta. 212+38.34 to Sta. 212+49.78



DETAIL 3
Sta. 212+65.78 to Sta. 212+89.78



DETAIL 4
Sta. 212+89.78 to 213+05.46

DESIGNED	CTB
CHECKED	AAG
DRAWN	JAW
CHECKED	JWH

McClure
Engineering Associates, Inc.
7282 Argus Drive
(815) 398-2332
Rockford, Illinois 61107-5837
Fax (815) 398-2498
Design Firm License: Illinois #184-000816
Copyright 2010 by McClure Engineering Associates, Inc.

SHEET NO. 5
5 SHEETS

F.A. RTE.	SECTION	COUNTY	TOTAL SHEETS	SHEET NO.
	06-00543-00-BT	WINNEBAGO	148	79
FED. ROAD DIST. NO.		ILLINOIS	FED. AID PROJECT	
			CONTRACT NO. 85521	

H:\06_08 RIVERWALK MUSEUM DESIGN\DRAWINGS\STRUCTURAL\GP&E\08-008 MODULAR R WALLS.DWG. MRWL 10/26/2010 3:46:09 PM. T. JWH