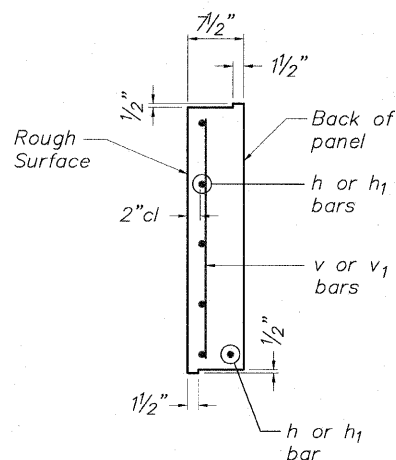


STATE OF ILLINOIS
DEPARTMENT OF TRANSPORTATION

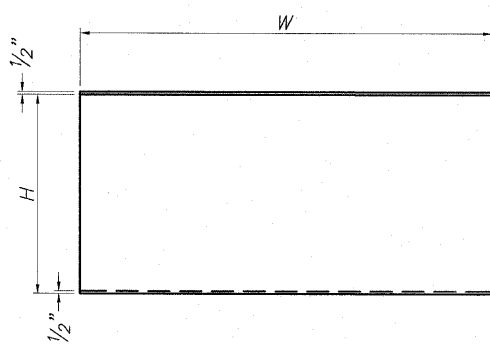
NOTES:

1. Precast Concrete Lagging shall be labeled "front" (river side) or "back" (embankment side) at the time of casting by the manufacturer.
2. Precast Panels shall meet the requirements of Section 1042 of the Standard Specifications and shall be paid for at the contract unit price per square foot for Precast Concrete Lagging.
3. Contractor to backfill wall as precast panels are installed or provide blocking detail to Engineer for approval at no additional cost to the contract.
4. Contractor is advised that the portion of Modular Retaining Wall No. 1 directly adjacent to SP Wall No. 20 shall be constructed and backfilled as SP Wall No. 20 is backfilled. No additional compensation will be allowed for temporary shoring or additional excavation and backfilling due to staged work.

| BORING NUMBER | STATION | OFFSET | GROUND ELEV. | EST. COMP. ROCK ELEV. |
|---------------|---------|-----------|--------------|-----------------------|
| B-1 | 205+62 | 20.1' LT | 728 | N/A |
| B-2 | 206+69 | 44.3' LT | 728 | N/A |
| B-3 | 207+60 | 36.1' LT | 728 | 701.5 |
| B-4 | 208+20 | 43.1' RT | 695 | 693.5 |
| B-5 | 209+64 | 59.9' RT | 693 | 691.0 |
| B-6 | 210+83 | 40.15' RT | 696 | 693.0 |
| B-7 | 212+10 | 37.74' RT | 696 | 694.5 |
| B-8 | 213+71 | 34.17' RT | 698 | 691.5 |
| B-9 | 211+98 | 31.8' LT | 716 | 706.0 |
| B-10 | 211+67 | 77.9' LT | 720 | 710.0 |
| B-11 | 212+57 | 61.6' LT | 721 | 705.0 |
| B-12 | 211+12 | 200.5' LT | 736 | 714.0 |
| B-13 | 212+13 | 155.2' LT | 730 | 709.0 |
| B-14 | 209+57 | 39.5' LT | 730 | 705.0 |
| B-15 | 208+63 | 54.3' LT | 730 | 700.0 |



**TYPICAL PANEL
END VIEW**



TYPICAL PANEL ELEVATION

***BILL OF MATERIAL**

ONE PANEL A

| Bar | No. | Size | Length | Shape |
|---------------------|-----|------|---------|-------|
| h | 6 | #4 | 4'-10" | — |
| v | 7 | #4 | 2'-8" | — |
| Concrete Structures | | | Cu. Yd. | 0.35 |
| Reinforcement Bars | | | Pound | 31.8 |
| Panel Area | | | Sq. Ft. | 15.41 |

***BILL OF MATERIAL**

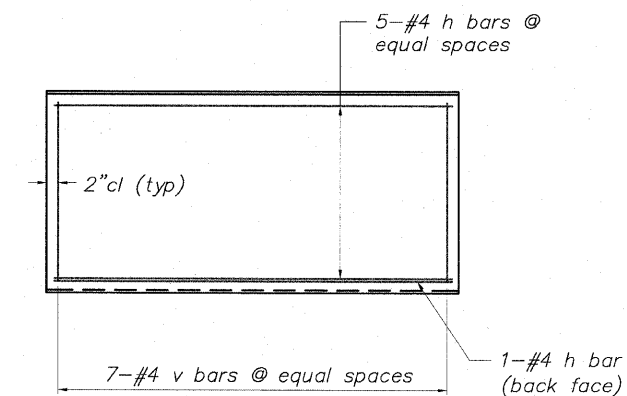
ONE PANEL B

| Bar | No. | Size | Length | Shape |
|---------------------|-----|------|---------|-------|
| h ₁ | 6 | #4 | 3'-1" | — |
| v | 5 | #4 | 2'-8" | — |
| Concrete Structures | | | Cu. Yd. | 0.23 |
| Reinforcement Bars | | | Pound | 21.3 |
| Panel Area | | | Sq. Ft. | 10.19 |

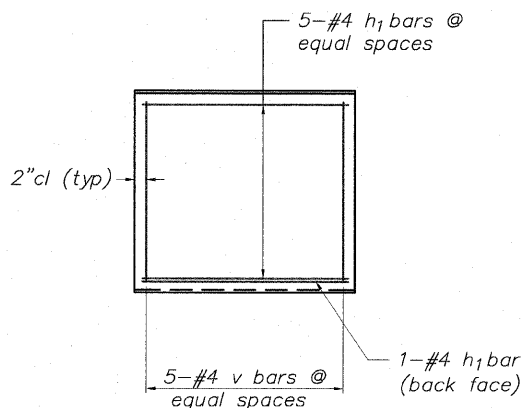
* Concrete and reinforcement quantities are given for information only. Concrete and reinforcement for panels are included in the pay item "Precast Concrete Lagging".

PANEL SCHEDULE

| PANEL | H | W |
|-------|------------|-------|
| A | 2'-11 3/4" | 5'-2" |
| B | 2'-11 3/4" | 3'-5" |
| | | |
| | | |



PANEL A REINFORCEMENT



PANEL B REINFORCEMENT

**PRECAST CONCRETE LAGGING
PANEL DETAILS**

**SP WALL No. 20 DETAILS
PRECAST PANEL DETAILS
PEDESTRIAN RIVERWALK
ALONG THE ROCK RIVER
WINNEBAGO COUNTY
SECTION NO. 06-00543-00-BT
STATION 208+05.12 TO
STATION 208+28.50**

| | |
|----------|-----|
| DESIGNED | CTB |
| CHECKED | AAG |
| DRAWN | JAW |
| CHECKED | JWH |

McClure
Engineering Associates, Inc.
7282 Argus Drive (815) 398-2332
Rockford, Illinois 61107-5837 Fax (815) 398-2496
Design Firm License: Illinois #184-000816
Copyright 2009 By McClure Engineering Associates, Inc.

SHEET NO. 3
5 SHEETS

| F.A. RTE. | SECTION | COUNTY | TOTAL SHEETS | SHEET NO. |
|---------------------|----------------|------------------|--------------|-----------|
| | 06-00543-00-BT | WINNEBAGO | 148 | 82 |
| CONTRACT NO. | | | 85521 | |
| FED. ROAD DIST. NO. | ILLINOIS | FED. AID PROJECT | | |