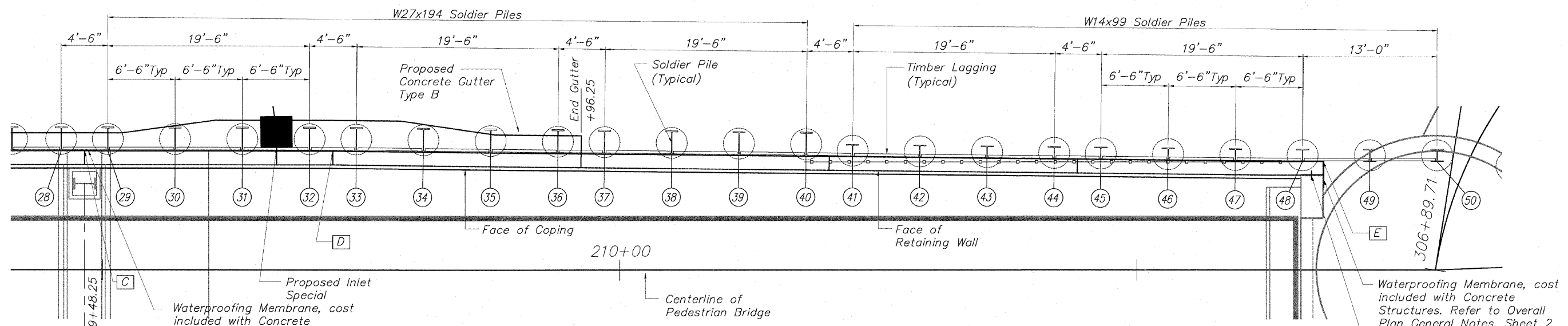


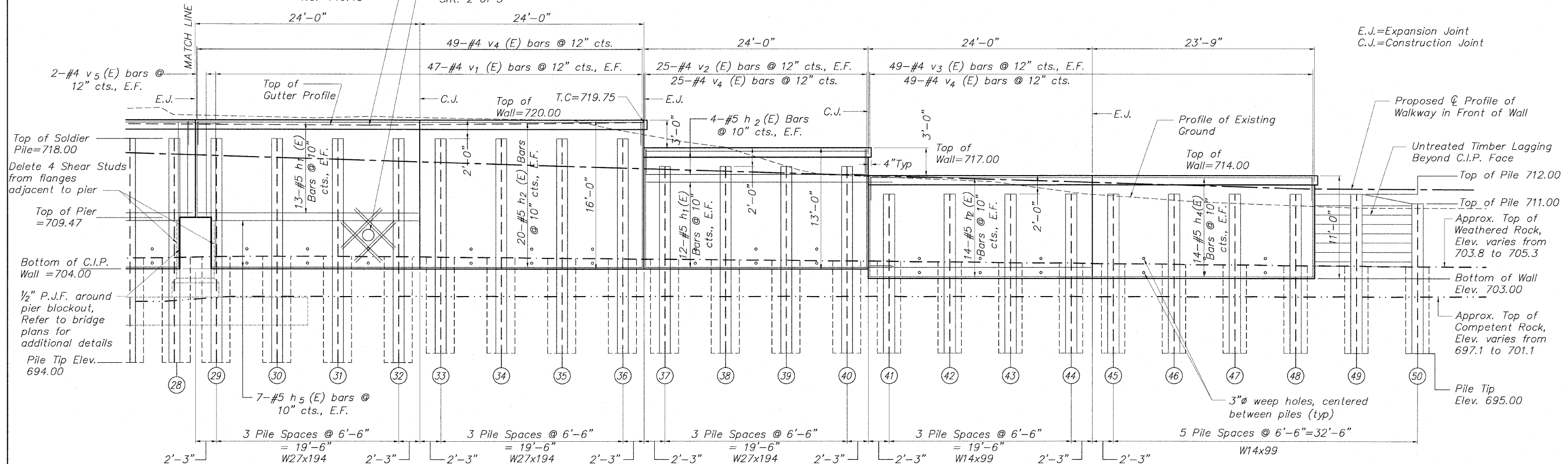
STATE OF ILLINOIS
DEPARTMENT OF TRANSPORTATION

SCALES:
PLAN: 1" = 5'
PROFILE: 1" = 5' HORIZ
1" = 5' VERT

0 5 10
Scale in Feet



PARTIAL PLAN



PARTIAL ELEVATION (Showing Reinforcement)
(Looking @ Front Face of Wall)

MINIMUM BAR LAP

| | |
|------------|-------|
| No. 4 bars | 1'-8" |
| No. 5 bars | 2'-2" |
| No. 6 bars | 2'-7" |

**SP WALL No. 21 DETAILS
PEDESTRIAN RIVERWALK
ALONG THE ROCK RIVER
WINNEBAGO COUNTY
SECTION NO. 06-00543-00-BT
STATION 208+13.27 TO
STATION 210+79.46**

| | |
|----------|-----|
| DESIGNED | CTB |
| CHECKED | AAG |
| DRAWN | JAW |
| CHECKED | JWH |

McClure
Engineering Associates, Inc.
7282 Argus Drive
(815) 398-2332
Rockford, Illinois 61107-5837
Fax (815) 398-2496
Design Firm License: Illinois #184-000816
Copyright 2009 by McClure Engineering Associates, Inc.

SHEET NO. 3
5 SHEETS

| | | | | |
|---------------------|----------------|------------------|--------------------|-----------|
| F.A. RTE. | SECTION | COUNTY | TOTAL SHEETS | SHEET NO. |
| | 06-00543-00-BT | WINNEBAGO | 148 | 87 |
| FED. ROAD DIST. NO. | ILLINOIS | FED. AID PROJECT | CONTRACT NO. 85521 | |

H:\06-005 RIVERWALK MUSEUM\DESIGN\DRAWINGS\STRUCTURAL\GPBE\06-005 SP-WALL 21.dwg, DET-21 (2), 10/26/2010 3:55:36 PM, J1, JWH