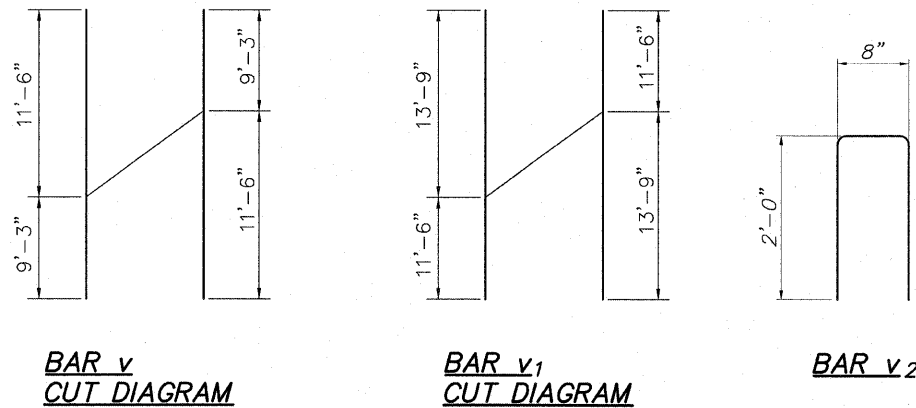


**SOLDIER PILE INFORMATION CHART**

Reference Point	Station	Offset to $\phi$ of Hole	Offset to Center Front Flange of Pile	Pile Section	Top of Pile	Bottom of Pile	Finished Pile Length	Furnished Pile Length	No. Stud Shear Connectors	
1	210+86.59	9.76' Lt.	9.17' Lt.	W14x109	710.86	695.40	15.46	17	-	
2	210+93.09	9.76' Lt.	9.17' Lt.	W14x109	711.17	695.40	15.77	17	16	
3	210+99.59	9.76' Lt.	9.17' Lt.	W14x109	711.48	695.40	16.08	17	16	
4	211+06.09	9.76' Lt.	9.17' Lt.	W14x109	711.79	695.40	16.39	18	18	
5	211+12.59	9.76' Lt.	9.17' Lt.	W14x109	712.10	695.40	16.70	18	18	
6	211+17.09	9.76' Lt.	9.17' Lt.	W14x109	712.31	695.40	16.91	18	18	
7	211+23.59	9.76' Lt.	9.17' Lt.	W14x109	712.64	695.40	17.24	19	20	
8	211+30.09	9.76' Lt.	9.17' Lt.	W14x109	712.95	695.40	17.55	19	20	
9	211+36.59	9.76' Lt.	9.17' Lt.	W14x109	713.24	695.84	17.40	19	20	
10	211+41.09	9.76' Lt.	9.17' Lt.	W14x109	713.46	695.84	17.62	19	22	
11	211+47.59	9.76' Lt.	9.17' Lt.	W14x109	713.77	695.84	17.93	19	22	
12	211+54.09	9.76' Lt.	9.17' Lt.	W14x109	714.08	695.84	18.24	20	22	
13	211+60.59	9.76' Lt.	9.17' Lt.	W14x109	714.39	695.84	18.55	20	24	
14	211+65.09	9.76' Lt.	9.17' Lt.	W14x109	714.60	695.84	18.76	20	24	
15	211+71.59	9.76' Lt.	9.17' Lt.	W14x109	714.91	695.84	19.07	20	24	
16	211+78.09	9.76' Lt.	9.17' Lt.	W14x109	715.22	695.84	19.38	21	24	
17	211+84.59	9.76' Lt.	9.17' Lt.	W14x109	715.53	695.84	19.69	21	24	
18	211+92.60	8.98' Lt.	8.39' Lt.	W14x109	715.84	695.84	20.00	21	-	
<b>Totals</b>								319 Ft.	343 Ft.	332 Ea.



**BILL OF MATERIAL**  
**Cast-in-Place Concrete**

Bar	No.	Size	Length	Shape
h (E)	64	#5	25'-7"	—
h <sub>1</sub> (E)	64	#5	23'-8"	—
h <sub>2</sub> (E)	16	#5	6'-6"	—
v (E)	48	#4	20'-9"	—
v <sub>1</sub> (E)	48	#4	25'-3"	—
v <sub>2</sub> (E)	96	#4	4'-8"	—
Concrete Structures			Cu. Yd.	56.3
Reinforcement Bars (Epoxy Coated)			Pound	5,355
Form Liner Textured Surface			Sq. Ft.	990
Staining Concrete Structures			Sq. Yd.	0
Rubbed Finish			Sq. Ft.	252

BORING NUMBER	STATION	OFFSET	GROUND ELEV.	EST. COMP. ROCK ELEV.
B-1	205+62	20.1' LT	728	N/A
B-2	206+69	44.3' LT	728	N/A
B-3	207+60	36.1' LT	728	701.5
B-4	208+20	43.1' RT	695	693.5
B-5	209+64	59.9' RT	693	691.0
B-6	210+83	40.15' RT	696	693.0
B-7	212+10	37.74' RT	696	694.5
B-8	213+71	34.17' RT	698	691.5
B-9	211+98	31.8' LT	716	706.0
B-10	211+67	77.9' LT	720	710.0
B-11	212+57	61.6' LT	721	705.0
B-12	211+12	200.5' LT	736	714.0
B-13	212+13	155.2' LT	730	709.0
B-14	209+57	39.5' LT	730	705.0
B-15	208+63	54.3' LT	730	700.0

**SP WALL No. 23 DETAILS**  
**PILE INFORMATION &**  
**C.I.P. BILL OF MATERIALS**  
**PEDESTRIAN RIVERWALK**  
**ALONG THE ROCK RIVER**  
**WINNEBAGO COUNTY**  
**SECTION NO. 06-00543-00-BT**  
**STATION 210+86.59 TO**  
**STATION 211+92.60**

DESIGNED	CTB
CHECKED	AAG
DRAWN	JAW
CHECKED	JWH

**McClure**  
Engineering Associates, Inc.  
7282 Argus Drive  
(815) 398-2332  
Rockford, Illinois 61107-5937  
Fax (815) 398-2496  
Design Firm License: Illinois #184-000816  
Copyright 2000 By McClure Engineering Associates, Inc.

SHEET NO. 4  
4 SHEETS

F.A. RTE.	SECTION	COUNTY	TOTAL SHEETS	SHEET NO.
	06-00543-00-BT	WINNEBAGO	148	98
FED. ROAD DIST. NO.		ILLINOIS	FED. AID PROJECT	
			CONTRACT NO. 85521	