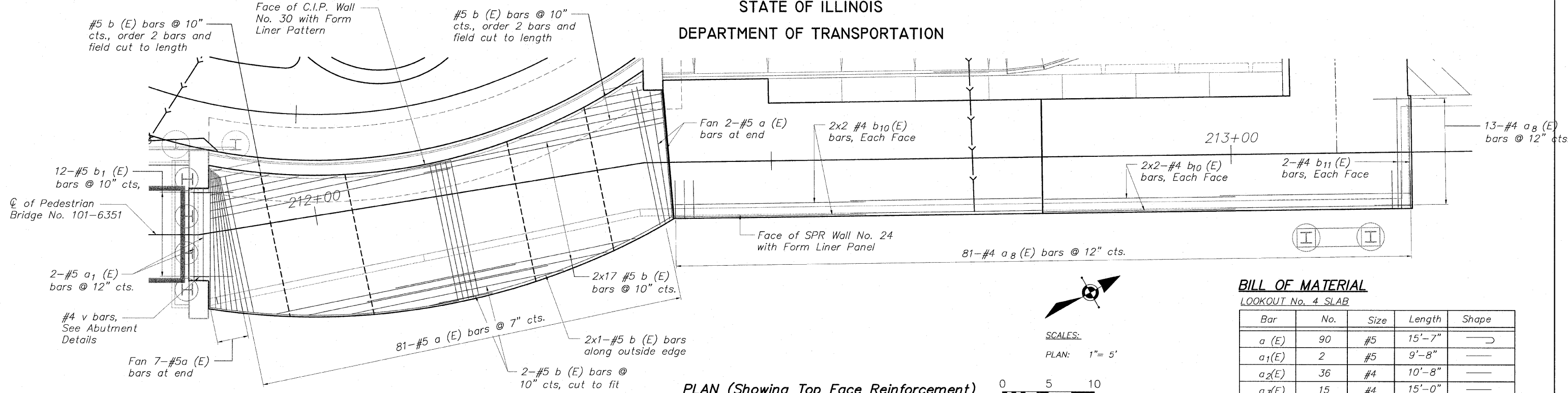
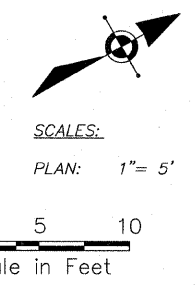


STATE OF ILLINOIS
DEPARTMENT OF TRANSPORTATION



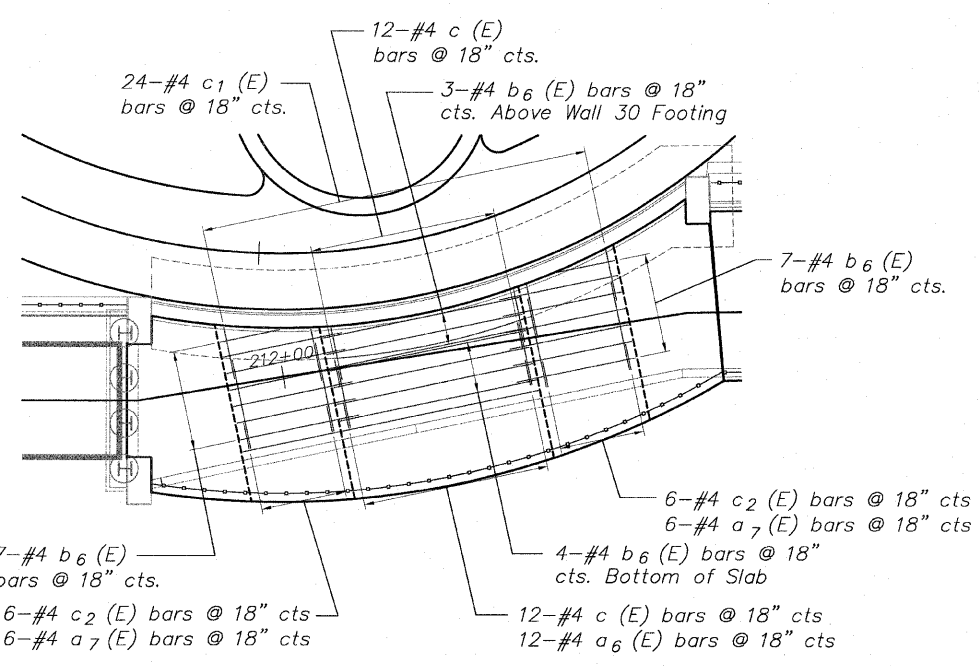
PLAN (Showing Top Face Reinforcement)



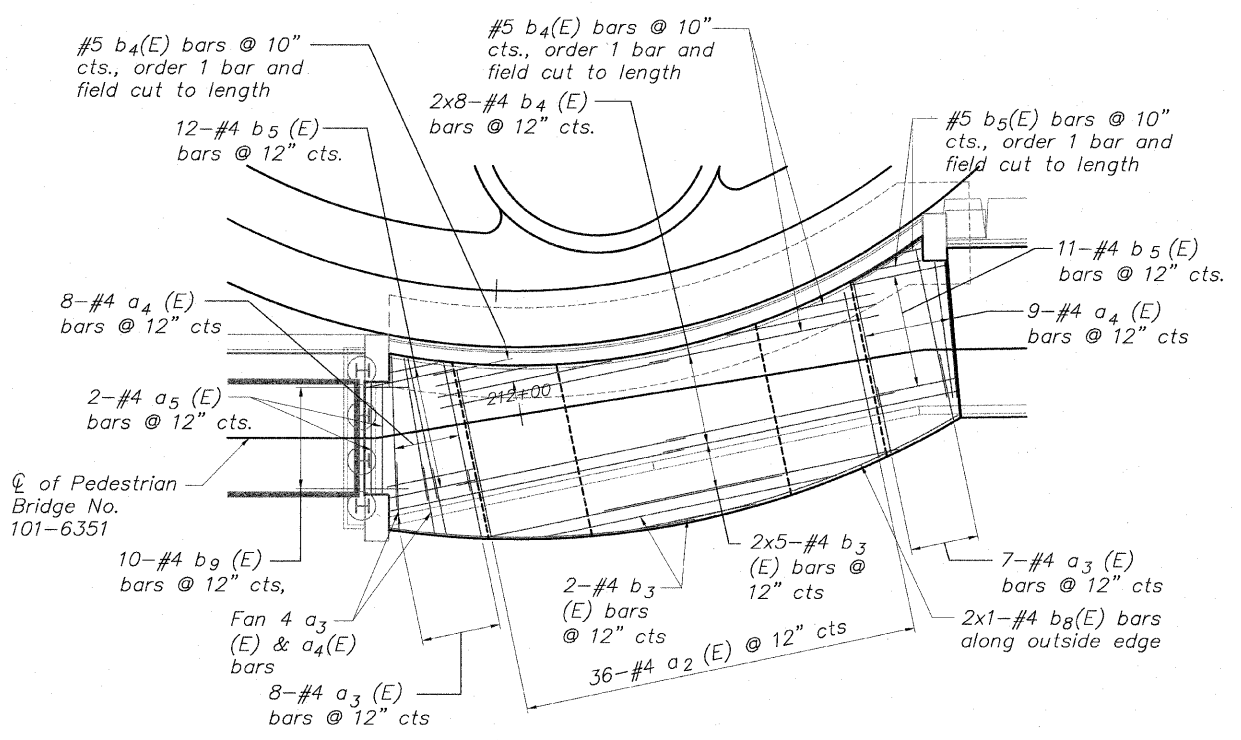
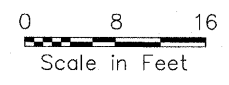
BILL OF MATERIAL

LOOKOUT No. 4 SLAB

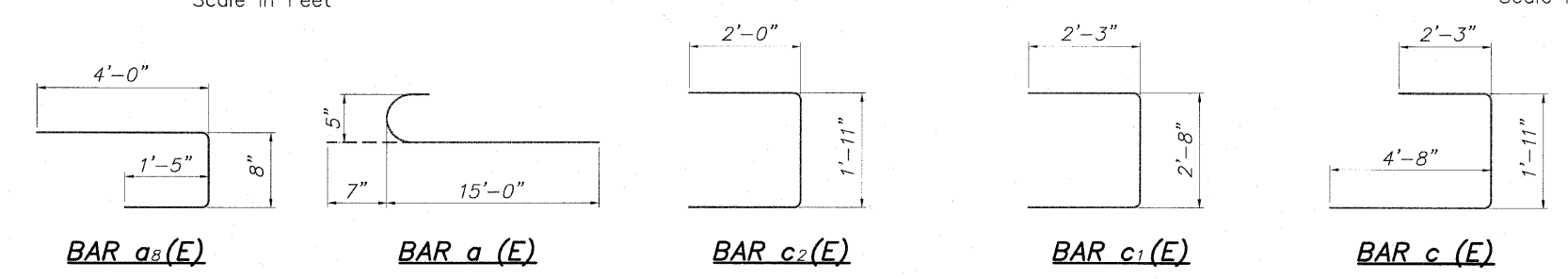
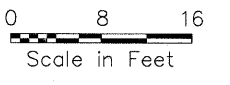
Bar	No.	Size	Length	Shape
a (E)	90	#5	15'-7"	—
a ₁ (E)	2	#5	9'-8"	—
a ₂ (E)	36	#4	10'-8"	—
a ₃ (E)	15	#4	15'-0"	—
a ₄ (E)	17	#4	13'-4"	—
a ₅ (E)	2	#4	9'-8"	—
a ₆ (E)	12	#4	5'-6"	—
a ₇ (E)	12	#4	8'-0"	—
a ₈ (E)	94	#4	6'-1"	—
b (E)	40	#5	26'-8"	—
b ₁ (E)	12	#5	4'-8"	—
b ₂ (E)	2	#5	27'-3"	R76'-10"
b ₃ (E)	12	#4	26'-6"	—
b ₄ (E)	18	#4	20'-8"	—
b ₅ (E)	24	#4	7'-9"	—
b ₆ (E)	7	#4	17'-8"	—
b ₇ (E)	14	#4	10'-8"	—
b ₈ (E)	2	#4	27'-0"	R76'-10"
b ₉ (E)	10	#4	4'-8"	—
b ₁₀ (E)	8	#4	20'-10"	—
b ₁₁ (E)	4	#4	12'-0"	—
c (E)	24	#4	7'-2"	—
c ₁ (E)	24	#4	8'-7"	—
c ₂ (E)	12	#4	5'-11"	—
Concrete Structures		Cu. Yd.	63.0	
Reinforcement Bars (Epoxy Coated)		Pound	5,050	
Rubbed Finish		Sq. Ft.	136	



PARTIAL PLAN (Showing Additional Bottom Face Reinforcement)



PARTIAL PLAN (Showing Bottom Face Reinforcement)



SLAB DETAILS LOOKOUT No. 4
PEDESTRIAN RIVERWALK
ALONG THE ROCK RIVER
WINNEBAGO COUNTY
SECTION NO. 06-00543-00-BT
STA. 211+87.01 TO STA. 213+19.63

DESIGNED	CTB
CHECKED	AAG
DRAWN	JAW
CHECKED	JWH

McClure
Engineering Associates, Inc.
7282 Argus Drive
Rockford, Illinois 61107-5017
(815) 398-2332 Fax (815) 398-2496
Design Firm License: Illinois #14-000816
Copyright 2010, By McClure Engineering Associates, Inc.

SHEET NO. 7
7 SHEETS

F.A. RTE.	SECTION	COUNTY	TOTAL SHEETS	SHEET NO.
	06-00543-00-BT	WINNEBAGO	148	105
FED. ROAD DIST. NO.		ILLINOIS	CONTRACT NO. 85521	
		FED. AID PROJECT		

H:\05-08 RIVERWALK MUSEUM\DESIGN\DRAWINGS\STRUCTURAL\GPBE\05-08 LOOKOUT DET.DWG, DET-24 (5), 10/26/2010 4:19:36 PM, J.L. JWH