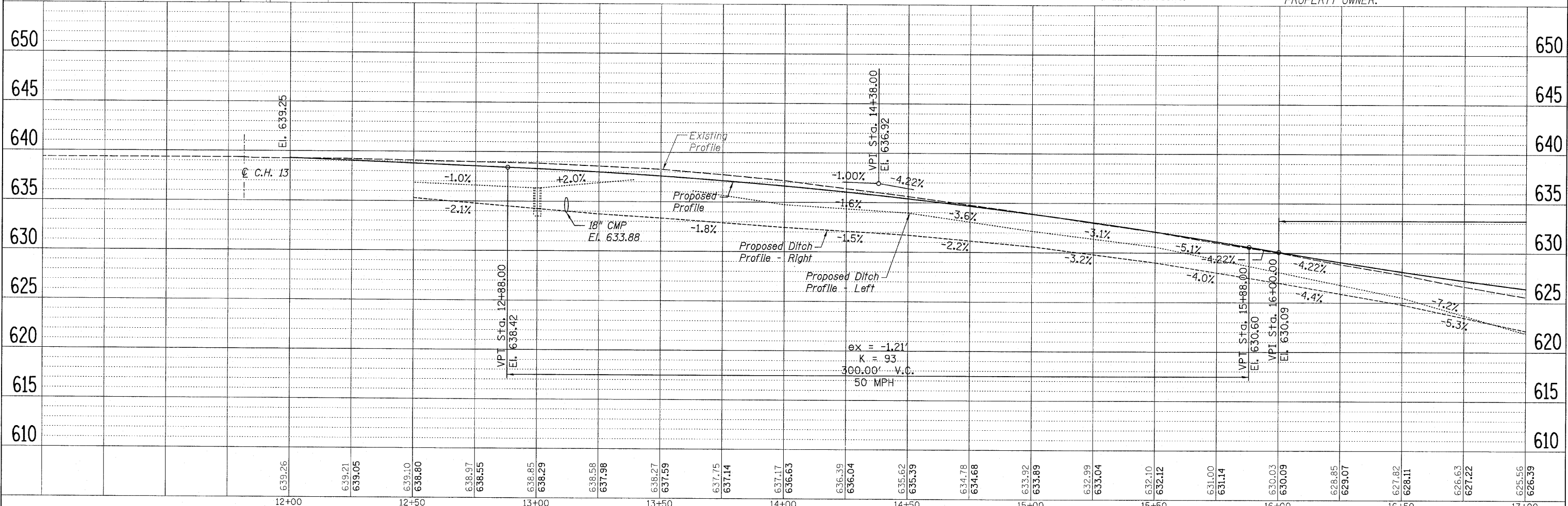
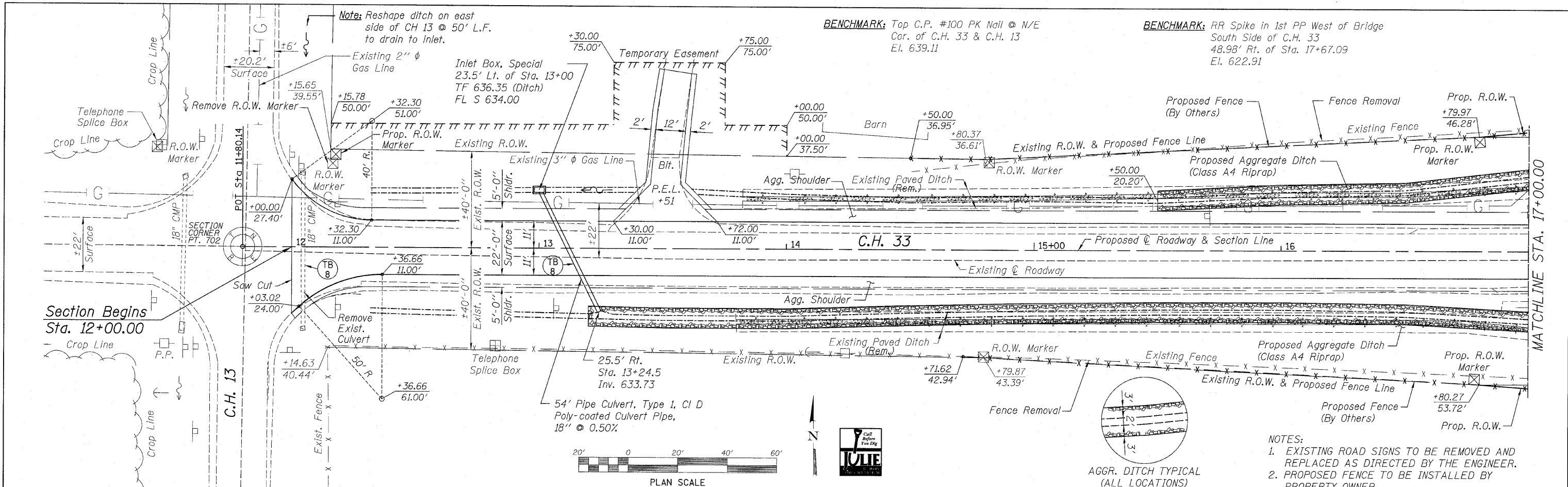


DATE	
BY	
PLAN	
NO.	
DATE	
BY	
PROFILE	
NO.	

DATE	
BY	
PROFILE	
NO.	
DATE	
BY	
PLAN	
NO.	



639.26	639.21	639.05	639.10	638.80	638.37	638.55	638.85	638.29	638.58	637.98	638.27	637.59	637.75	637.14	637.17	636.63	636.39	636.04	635.62	635.39	634.78	634.68	633.92	633.89	632.99	633.04	632.10	632.12	631.00	631.14	630.03	630.09	628.85	629.07	627.82	628.11	626.63	627.22	625.56	626.39		
12+00		12+50		13+00		13+50		14+00		14+50		15+00		15+50		16+00		16+50		17+00																						

WILLET, HOFMANN & ASSOCIATES, INC.
 CONSULTING ENGINEERS
 809 East Second Street, Dixon, IL 61021
 Phone: 815.284.3381 Fax: 815.284.3388
 Design Firm # 184-00918
 www.willettthofmann.com

USER NAME =	DESIGNED -	REVISED -
PLOT SCALE =	DRAWN -	REVISED -
PLOT DATE =	CHECKED -	REVISED -
	DATE -	REVISED -

LASALLE COUNTY
COUNTY HIGHWAY 33
TOMAHAWK BRIDGE REPLACEMENT

COUNTY HIGHWAY 33 - PLAN & PROFILE

F.A.S. RTE.	SECTION	COUNTY	TOTAL SHEETS	SHEET NO.
1365	10-00650-00-BR	LASALLE	39	8
STA. 12+00.00 TO STA. 17+00.00		CONTRACT NO. 87448		
FED. ROAD DIST. NO. 7 (ILLINOIS) FED. AID PROJECT BRS-1365(113)				