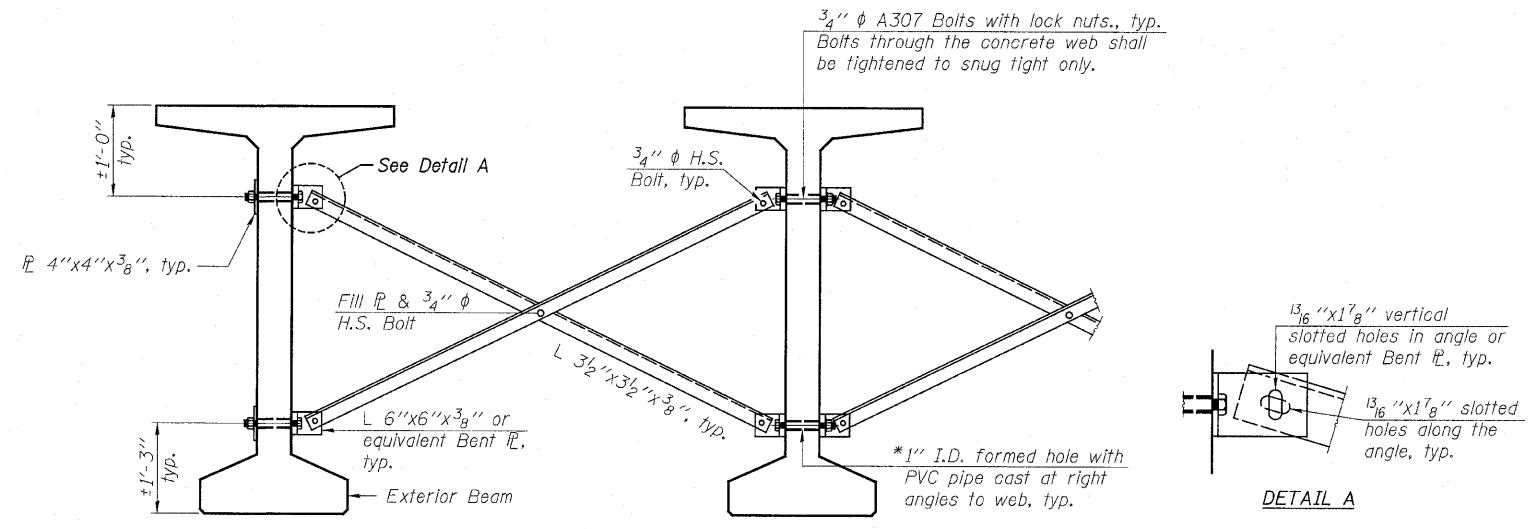


PLAN

INTERIOR BEAM MOMENT TABLE		
Sp. 1		
I	(in ⁴)	392,638
I'	(in ⁴)	749,655
S _b	(in ³)	12,224
S _b '	(in ³)	16,166
S ₁	(in ³)	12,715
S ₁ '	(in ³)	45,078
DC1	(k/')	1.549
M _{DC1}	(k)	1,916.7
DC2	(k/')	0.180
M _{DC2}	(k)	222.7
DW	(k/')	0.338
M _{DW}	(k)	418.2
M _Σ + IM	(k)	1,737.1

INTERIOR BEAM REACTION TABLE		
Abut.		
R _{DC1}	(k)	77.1
R _{DC2}	(k)	9.0
R _{DW}	(k)	16.8
R _Σ + IM	(k)	96.1
R _{Total}	(k)	199.0



PERMANENT BRACING DETAILS FOR BULB-T BEAMS

NOTES:
 All material for bracing shall be hot dip galvanized according to AASHTO M111 unless otherwise noted.
 Two hardened washers are required for each set of oversized holes.
 All holes shall be 15/16" φ unless otherwise noted.
 5/16" x 3" x 3" plate washers are required over all slotted holes.
 All bolts shall be galvanized according to AASHTO M232.
 Bracing shall be installed as beams are erected and tightened as soon as possible during erection.
 Permanent bracing shall not be paid for separately, but shall be included in the cost of Furnishing and Erecting Precast Prestressed Concrete Bulb T-Beams.
 *Fabricator shall locate to miss strands within permissible tolerances.

FRAMING PLAN
C.H. 33 OVER TOMAHAWK CREEK
F.A.S. RTE. 1365 - SEC. 10-00650-00-BR
LASALLE COUNTY
STATION 20+00
S.N. 050-3594
 WHA # 1155D08

STRUCTURAL SHEET NO. 7 OF 18 SHEETS	F.A.S. RTE.	SECTION	COUNTY	TOTAL SHEETS	SHEET NO.
	1365	10-00650-00-BR	LASALLE	39	20
			CONTRACT NO. 87448		
FED. ROAD DIST. NO. 7 ILLINOIS FED. AID PROJECT BRS-1365(113)					

FILE NAME: \\s\server\1\BBS\BBS\1365\10-00650-00-BR\1155D08.dwg