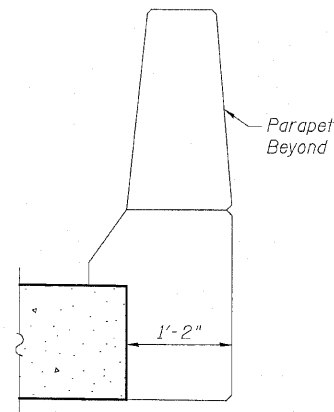
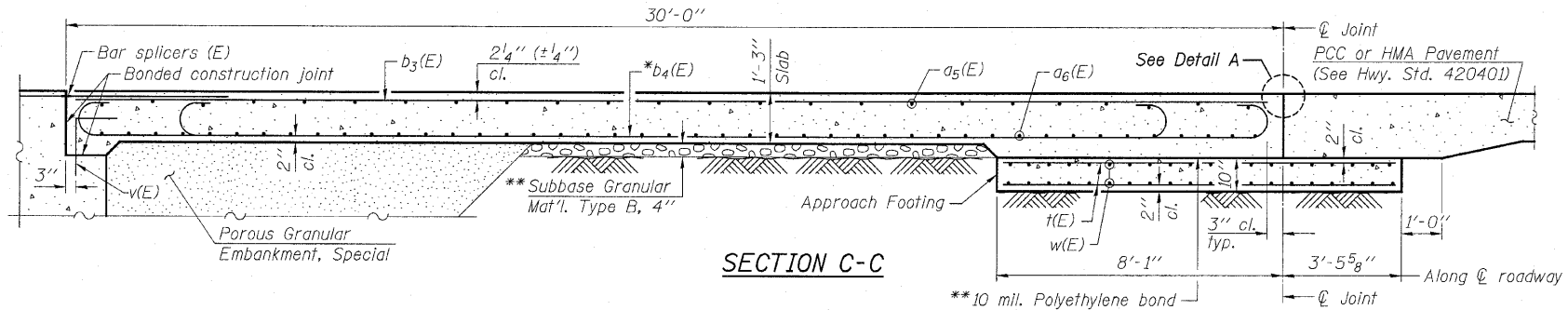


FLEXIBLE PAVEMENT

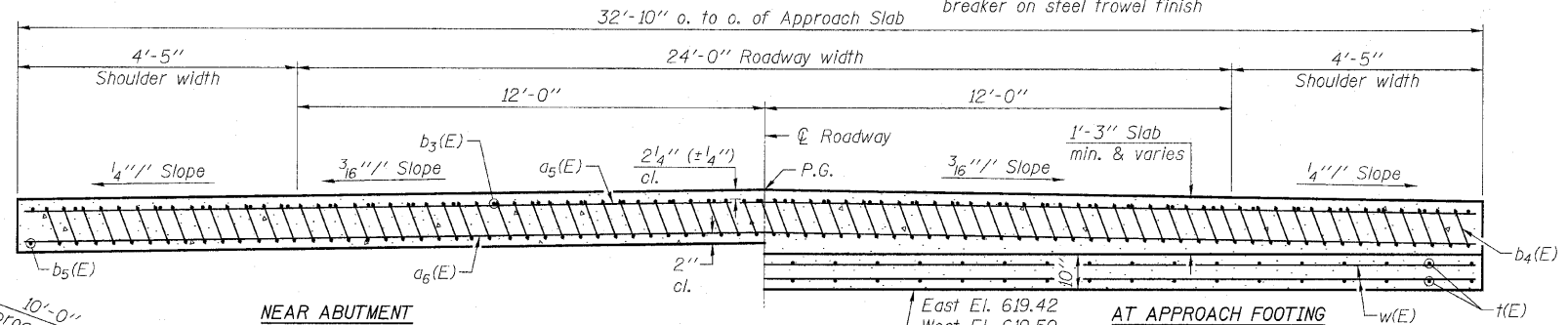
DETAIL A



VIEW B-B



SECTION C-C

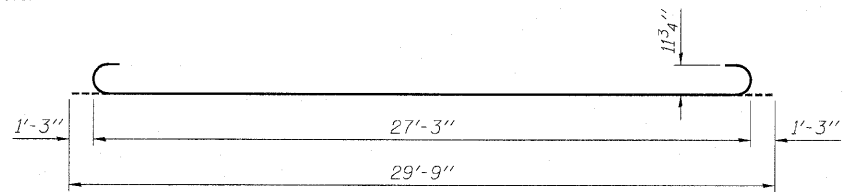


SECTION D-D

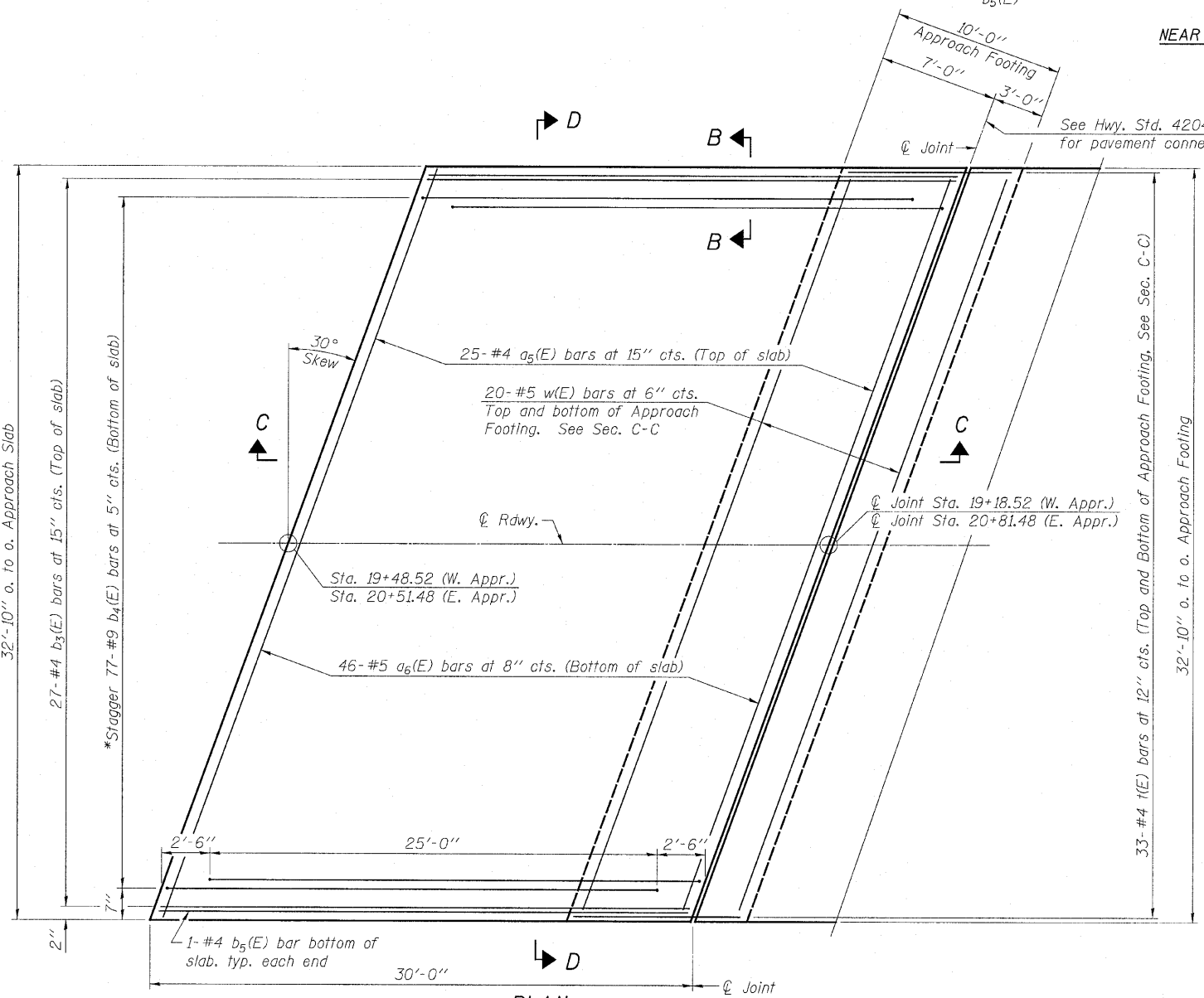
East El. 619.42  
West El. 619.50  
(Level out to out)

TWO APPROACHES  
BILL OF MATERIAL

Bar	No.	Size	Length	Shape	
a <sub>5</sub> (E)	50	#4	37'-6"	—	
a <sub>6</sub> (E)	92	#5	37'-6"	—	
b <sub>3</sub> (E)	54	#4	29'-8"	—	
b <sub>4</sub> (E)	154	#9	29'-9"	—	
b <sub>5</sub> (E)	4	#4	29'-8"	—	
t(E)	132	#4	11'-2"	—	
w(E)	80	#5	37'-6"	—	
Concrete Structures				Cu. Yd.	23.3
Concrete Superstructure				Cu. Yd.	96.0
Bridge Deck Grooving				Sq. Yd.	206
Protective Coat				Sq. Yd.	219
Reinforcement Bars, Epoxy Coated				Pound	25,690



BAR b<sub>4</sub>(E)

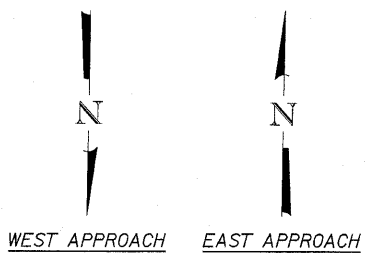


PLAN

NOTES:

- a<sub>5</sub>(E) and a<sub>6</sub>(E) bar spacings measured along  $\varnothing$  Rdwy.
- Approach slab shall be paid for as Concrete Superstructure.
- Approach footing concrete shall be paid for as Concrete Structures.
- Reinforcement shall be paid for as Reinforcement Bars, Epoxy Coated.
- For v(E) bar details, see Structural Sheet 9 of 18.
- The approach footing maximum applied service bearing pressure (Q<sub>max</sub>) = 2.0 ksf.
- For Bar Splicer Assembly Details, see Structural Sheet 17 of 18.
- Cost of excavation for approach footing included with Concrete Structures.
- For Porous Granular Embankment, Special and drainage treatment details, see Structural Sheet 2 of 18.
- For additional parapet details, see Structural Sheet 9 of 18.
- \* Tilt #9 b<sub>4</sub>(E) bars as required to maintain clearance.
- \*\* Cost included with Concrete Superstructure.

**BRIDGE APPROACH SLAB DETAILS**  
**C.H. 33 OVER TOMAHAWK CREEK**  
**F.A.S. RTE. 1365 - SEC. 10-00650-00-BR**  
**LASALLE COUNTY**  
**STATION 20+00**  
**S.N. 050-3594**  
 WHA # 1155D08



STRUCTURAL SHEET NO. 11 OF 18 SHEETS	F.A.S. RTE.	SECTION	COUNTY	TOTAL SHEETS	SHEET NO.
	1365	10-00650-00-BR	LASALLE	39	24
CONTRACT NO. 87448				FED. ROAD DIST. NO. 7 ILLINOIS FED. AID PROJECT BRS-1365(113)	

FILE NAME: s:\structure\1155D08.DWG Date: 11/11/11 County: Drawing: 1155 Approach.dwg