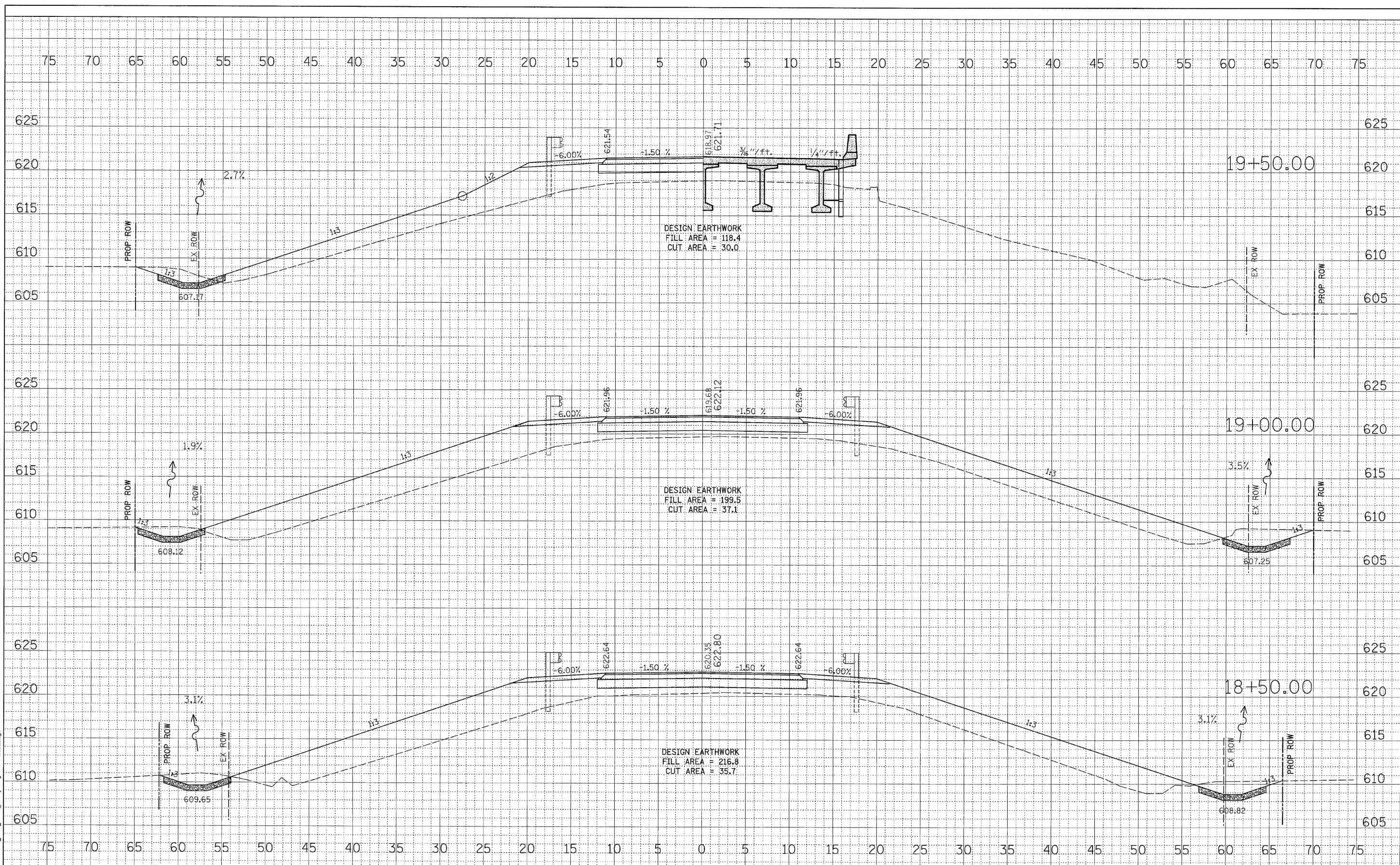


DATE	
BY	
FINAL SURVEY	SURVEYED
NOTE BOOK	PLOTTED
NO.	TEMPLATE
	AREAS CHECKED

DATE	
BY	
ORIGINAL SURVEY	SURVEYED
NOTE BOOK	PLOTTED
NO.	TEMPLATE
	AREAS CHECKED



WILLET, HOFMANN & ASSOCIATES, INC.
CONSULTING ENGINEERS
 809 East Second Street Dixon, IL 61021
 Phone 815-284-5391 Fax 815-284-5395
 Design Firm # 184-00918
 www.willetthofmann.com

USER NAME =	DESIGNED -	REVISED -
PLOT SCALE =	DRAWN -	REVISED -
PLOT DATE =	CHECKED -	REVISED -
	DATE -	REVISED -

LASALLE COUNTY
COUNTY HIGHWAY 33
TOMAHAWK BRIDGE REPLACEMENT

C.H. 33 - Cross Sections

F.A.S. RTE.	SECTION	COUNTY	TOTAL SHEETS	SHEET NO.
1365	10-00650-00-BR	LASALLE	39	35
STA. 18+50.00 TO STA. 19+50.00		CONTRACT NO. B7448		
FED. ROAD DIST. NO. 7 [ILLINOIS]		FED. AID PROJECT BRS-1365(13)		