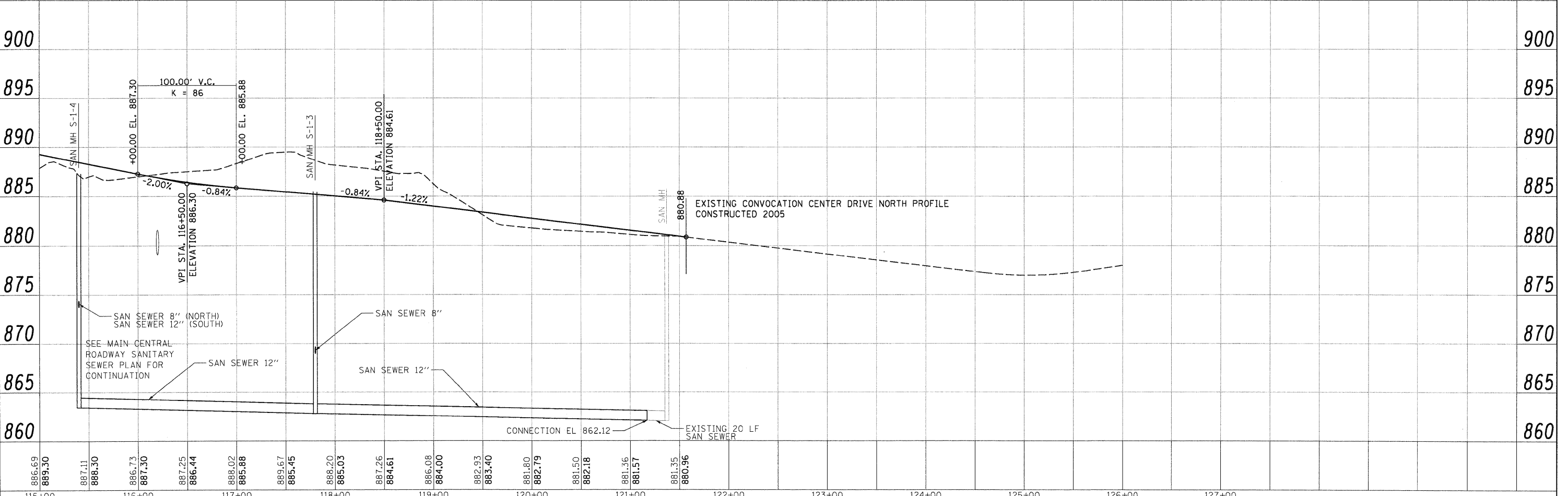
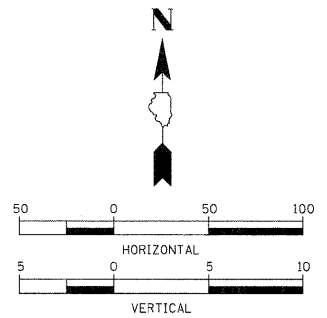
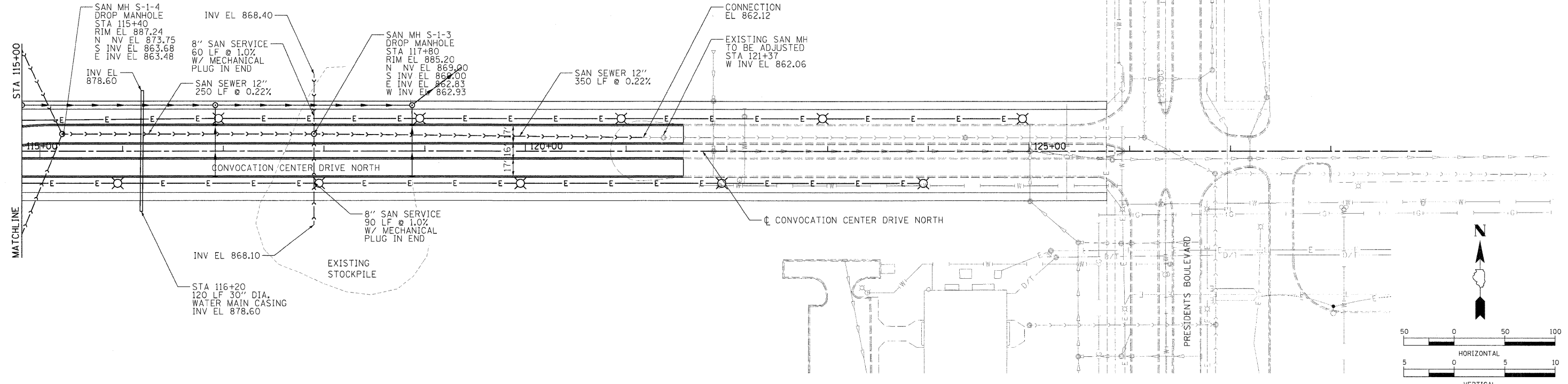




SEE MAIN CENTRAL
ROADWAY SANITARY
SEWER PLAN FOR
CONTINUATION



LAYOUT: MWH 09/09/10 Huss0041
DRAWN: MWH 09/09/10 Huss0041
REVISED: CRC 11/05/2010

FILE NAME = C:\144-SAN-CCDN.dgn	USER NAME = Huss0041	DESIGNED - CRC	REVISED -	STATE OF ILLINOIS DEPARTMENT OF TRANSPORTATION	NORTHERN ILLINOIS UNIVERSITY WEST CAMPUS EXPANSION CONVOCATION CENTER DRIVE NORTH SANITARY SEWER	F.A.P. RTE. 567	SECTION 06-00002-00-PV	COUNTY DEKALB	TOTAL SHEETS 148	SHEET NO. 32	
SCALE = 1" = 50'	SHEET NO.	OF	SHEETS			STA. 115+00 TO STA. 122+00	CONTRACT NO. 87476		ILLINOIS FED. AID PROJECT		
DATE = 11/04/10	CHECKED - CRC	REVISER -	REVISER -								
DATE = 11/04/10	DRAWN - MWH	REVISER -	REVISER -								