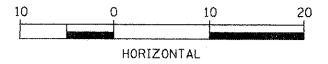
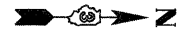
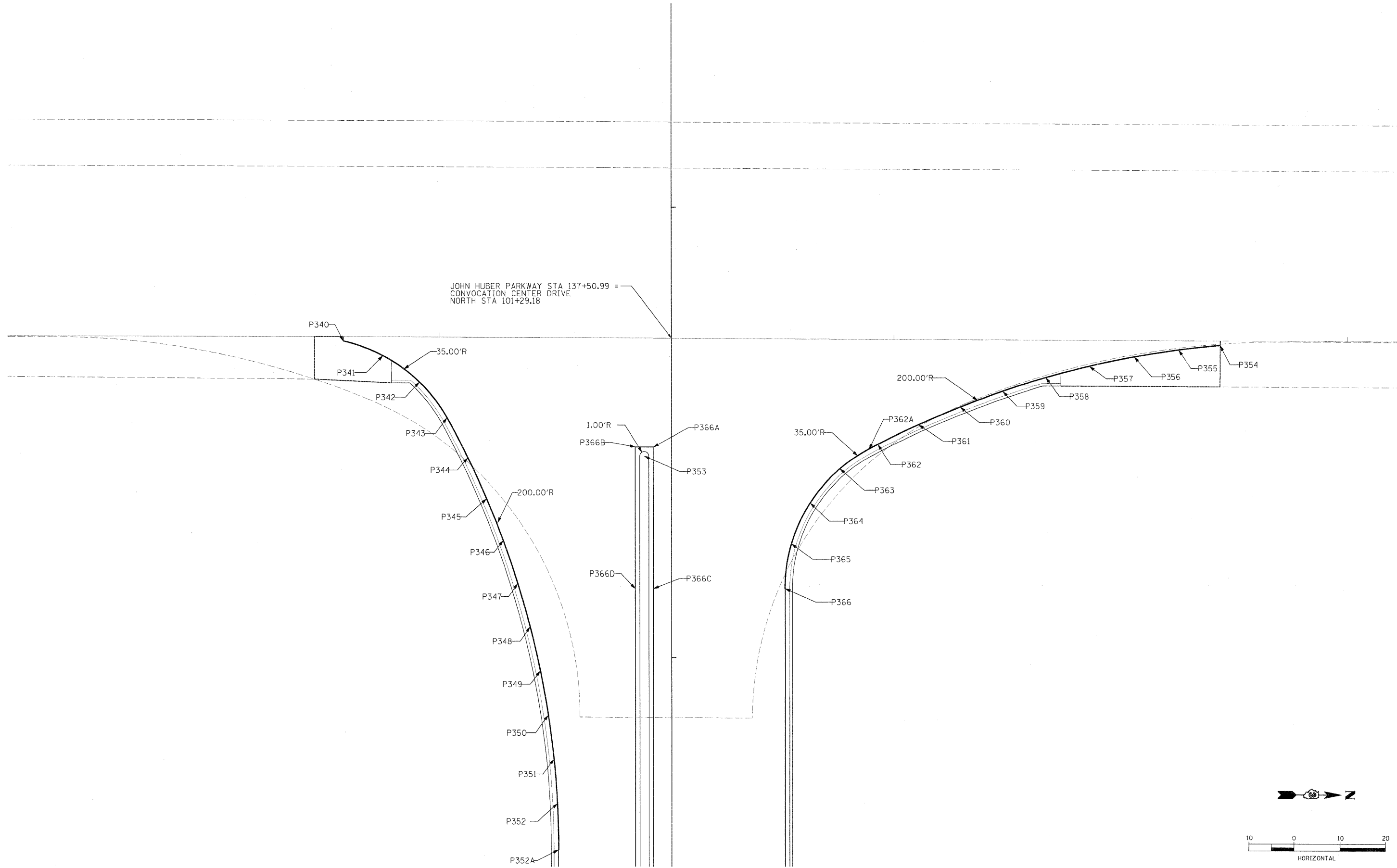




© Copyright Hanson Engineering Services, Inc. 2007

LAYOUT MWH 08/31/10 Husu0241
 DRAWN MWH 11/04/10 11/05/2010
 REVIEWED DPA 11/04/10 11/05/2010

C:\13 DET-INT.dgn
 C:\13 DET-INT.dgn
 C:\13 DET-INT.dgn



FILE NAME =	USER NAME = MWH	DESIGNED - DPA	REVISIONS	STATE OF ILLINOIS DEPARTMENT OF TRANSPORTATION	NORTHERN ILLINOIS UNIVERSITY FAR WEST CAMPUS EXPANSION CCDN / JOHN HUBER INTERSECTION DETAIL	F.A.P. RTE. 567	SECTION 06-00002-00-PV	COUNTY DEKALB	TOTAL SHEETS 148	SHEET NO. 51		
PLOT SCALE = AS SHOWN	CHECKED - DPA	DATE - 11/04/10	SCALE: AS SHOWN			SHEET NO. OF SHEETS	STA. TO STA.	FED. ROAD DIST. NO. ILLINOIS FED. AID PROJECT				
PLOT DATE = 11/05/2010	DATE - 11/04/10							CONTRACT NO. 87476				