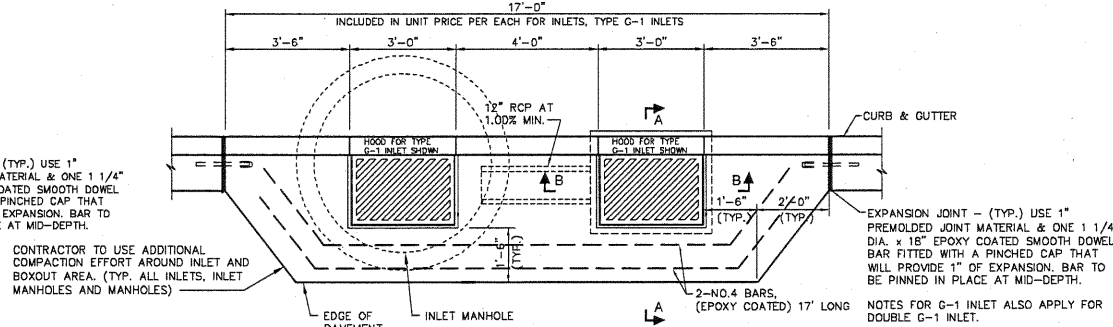


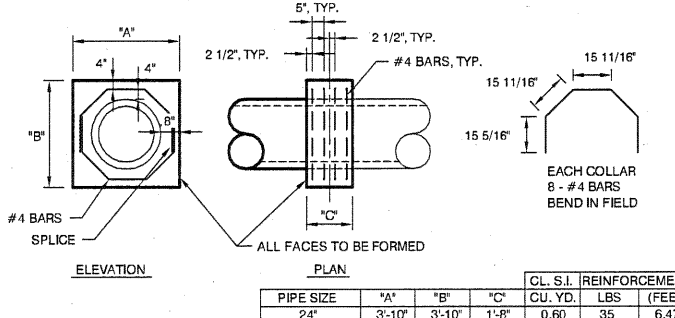
INLET CASTING BOXOUT FOR G-1 INLETS

NOTES:
THE COST OF THE INLET CASTING BOXOUT, INCLUDING COMBINATION CONCRETE CURB AND APRON, EXPANSION JOINTS, AND NO. 4 RE-BARS SHALL BE INCLUDED IN THE UNIT PRICE PER EACH FOR INLETS, TYPE G-1; INLETS, TYPE G-2; INLETS, DOUBLE G-1; OR INLETS, DOUBLE G-1, SPECIAL.
INLET BOXES SHALL BE PLACED ACCURATELY. THE INSIDE BACK OF THE INLET IS TO BE IN LINE WITH THE BACK OF PROPOSED CURB AND GUTTER. INLET BOXES THAT ARE MORE THAN 3" OUT OF ALIGNMENT, SHALL BE REMOVED AND RESET AT THE CONTRACTOR'S EXPENSE.
EXPANSION JOINT MATERIAL SHALL BE FLEX / FOAM, AS MANUFACTURED BY THE RIGHT POINTE COMPANY, OR APPROVED EQUAL.

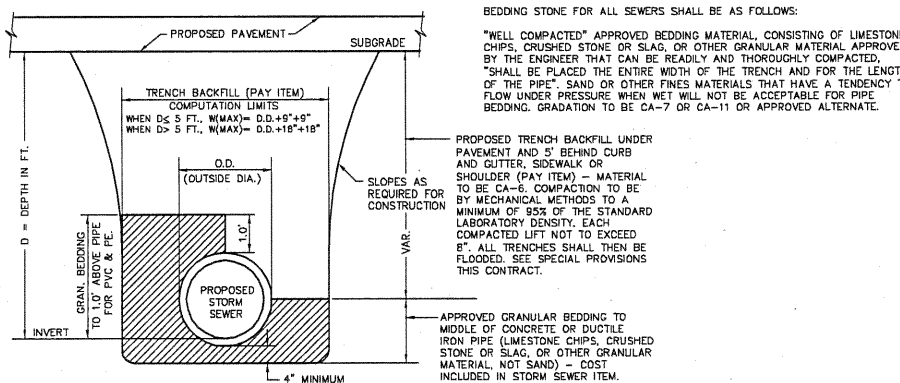


INLET MANHOLE, 5' DIA., TYPE G-1, DOUBLE, SPECIAL

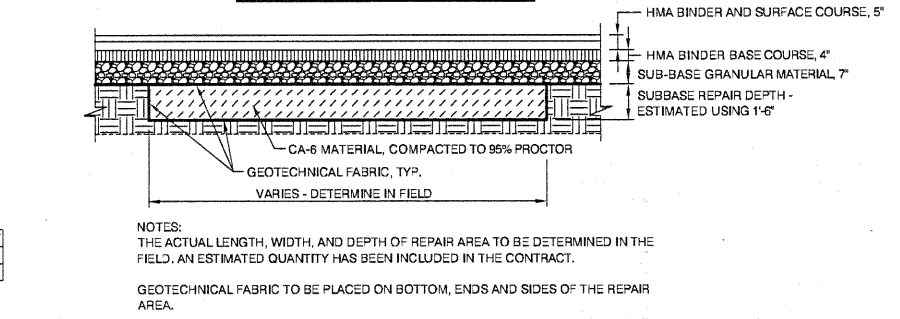
EQUAL TO EAST JORDAN IRONWORKS #7510 OR NEEHAH FOUNDRY R-3246-A, HEAVY DUTY CURB INLET WITH TYPE M DIAGONAL BAR GRATE. TYPE T1 BACK TO BE CAST WITH A "FISH EMBLEM" AND MARKED "DUMP NO WASTE - DRAINS TO WATERWAY". TOTAL WEIGHT = 825 LBS. (ASTM A48 CL. 35). CASTING AND GRATE TO BE COATED WITH A WATER BASE ASPHALT PAINT.



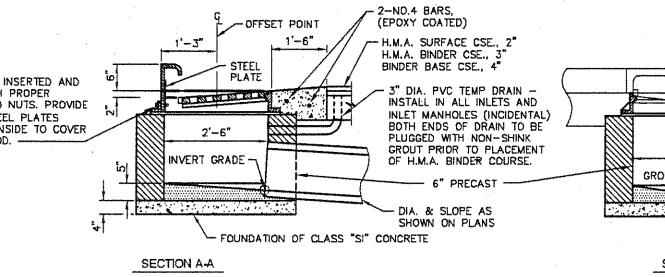
CONCRETE COLLAR DETAIL



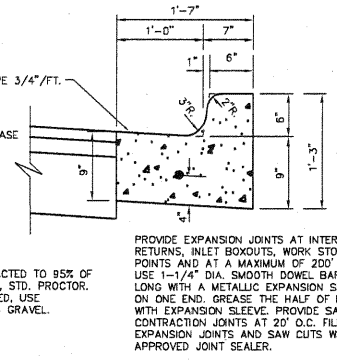
STORM SEWER TRENCH DETAILS



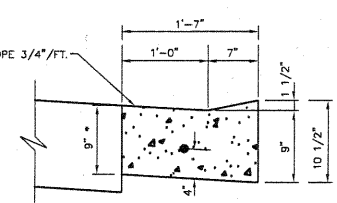
SUBBASE REPAIR DETAIL



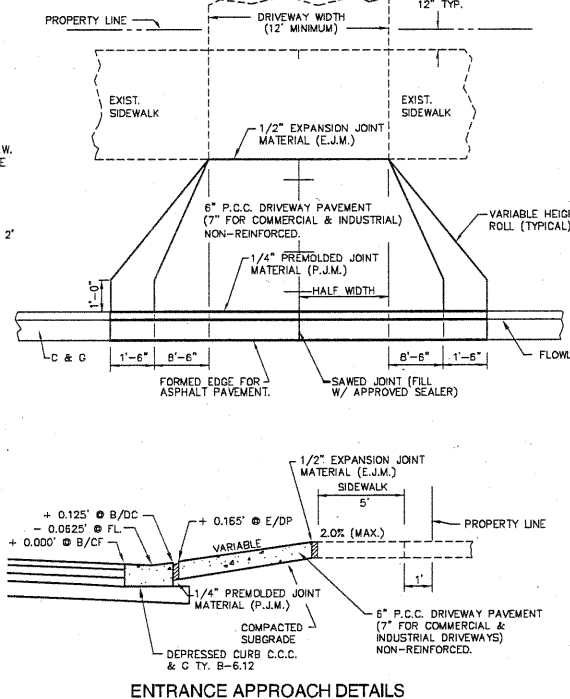
G-1 INLET DETAILS



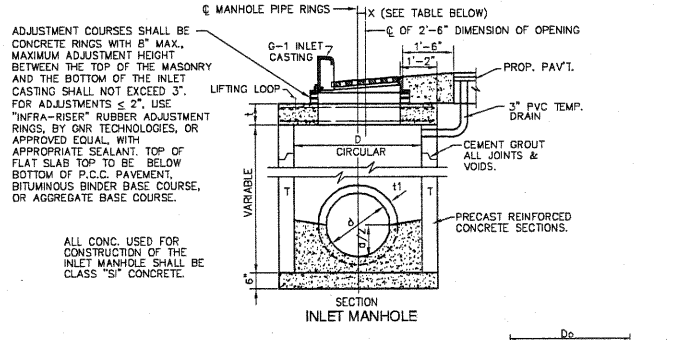
DEPRESSED CURB



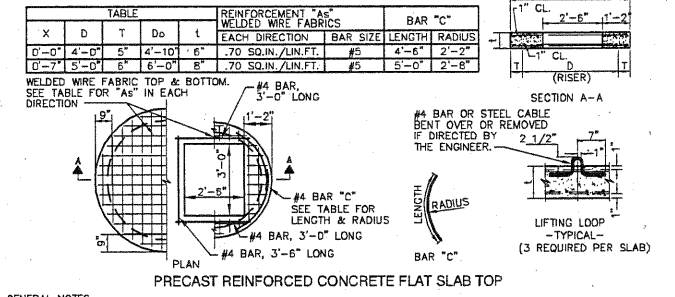
ENTRANCE APPROACH DETAILS



ENTRANCE APPROACH DETAILS



SECTION INLET MANHOLE



PRECAST REINFORCED CONCRETE FLAT SLAB TOP

GENERAL NOTES:
1. THE CURB INLET FRAME, HOOD & GRATE SHALL BE EQUAL TO EAST JORDAN IRONWORKS #7510 OR NEEHAH FOUNDRY R-3246-A, HEAVY DUTY CURB INLET WITH DIAGONAL BAR GRATE. TYPE T1 BACK TO BE CAST WITH A "FISH EMBLEM" AND MARKED "DUMP NO WASTE - DRAINS TO WATERWAY". TOTAL WEIGHT = 825 LBS. (ASTM A48 CL. 35). CASTING AND GRATE TO BE COATED WITH A WATER BASE ASPHALT PAINT. (MAXIMUM SLOT OPENINGS IN THE GRATE SHALL BE 1" - 1 1/2").
2. BOLTS FOR HOOD SHALL BE PROVIDED WITH PROPER NUTS, WASHERS AND 1/4" MIN. STEEL PLATES TO COVER SLOTTED OPENINGS.
3. GROUT INLET BOTTOMS TO DRAIN TO OUTLET PIPE.
4. FOR ADJUSTMENTS ≤ 2", USE "INFRA-RISER" RUBBER ADJUSTMENT RINGS, BY GNR TECHNOLOGIES, OR EQUAL.
5. CUT ALL SEWERS PIPES FLUSH WITH INTERIOR WALL OF INLET.
6. MAINTAIN 6" MAXIMUM HOOD OPENING.
7. THE 3" PVC DRAIN PIPE TO BE PLUGGED AT BOTH ENDS WITH NON-SHRINK GROUT PRIOR TO PLACING FINAL PAVEMENT.
8. INLET MANHOLES SHALL BE PLACED ACCURATELY. THE INSIDE BACK OF THE OPENING IS TO BE IN LINE WITH THE BACK OF THE PROPOSED OR EXISTING CURB & GUTTER. OPENINGS THAT ARE MORE THAN 3" OUT OF ALIGNMENT, SHALL CAUSE THE MANHOLE TO BE REMOVED AND RESET AT THE CONTRACTOR'S EXPENSE.

INLET MANHOLE, TY. G-1, VILLAGE STANDARD

- GENERAL NOTES:
1. FOR CURB & GUTTER ADJACENT TO CONCRETE PAVEMENT, PROVIDE NO. 4 TIE BARS AT 30" O.C., 30" LONG.
2. SEE SPECIAL PROVISION FOR PORTLAND CEMENT CONCRETE.
3. TOP OF CURB TO BE BRANDED WITH EITHER "S" OR "W" AT LOCATIONS OF SEWER AND WATER TAPS AND A "D" FOR SUMP DRAINS.
4. ANY CONCRETE THAT SPILLS OUT FROM UNDER MULE OR FORM, ON STREET SIDE, SHALL BE REMOVED PRIOR TO PLACING NEW BASE MATERIAL OR NEW PAVEMENT.
5. CURING COMPOUND SHALL BE APPLIED TO FRONT, BACK, TOP, FACE AND PAN OF COMBINATION CONCRETE CURB & GUTTER, AS SOON AS CONCRETE SURFACE HAS A "DRY TO THE TOUCH" CONDITION.
6. ALL BARS TO BE EPOXY COATED.
7. EXPANSION JOINT MATERIAL SHALL BE FLEX / FOAM, AS MANUFACTURED BY THE RIGHT POINTE COMPANY, OR APPROVED EQUAL.

COMBINATION CONCRETE CURB AND GUTTER TYPE B-6.12

THE COST OF THE JOINT SAW CUTTING, CLEANING AND SEALING AND THE PREFORMED JOINT MATERIAL (P.J.M.) SHALL BE INCLUDED IN THE CONTRACT UNIT PRICE PER SQUARE YARD FOR THE ITEM "P.C. CONCRETE DRIVEWAY PAVEMENT" OF THE THICKNESS SPECIFIED, AND NO ADDITIONAL COMPENSATION SHALL BE ALLOWED.
CURING COMPOUND SHALL BE APPLIED TO NEW P.C.C. DRIVEWAY PAVEMENT AS SOON AS THE CONCRETE SURFACE HAS A "DRY TO THE TOUCH" CONDITION.
THE 1/2" EXPANSION JOINT MATERIAL SHALL BE FLEX / FOAM, AS MANUFACTURED BY THE RIGHT POINTE COMPANY, OR APPROVED EQUAL.
THE 1/4" P.J.M. SHALL BE REFLEX RUBBER EXPANSION JOINT MATERIAL AS MANUFACTURED BY J.D. RUSSELL CO., OR APPROVED EQUAL.