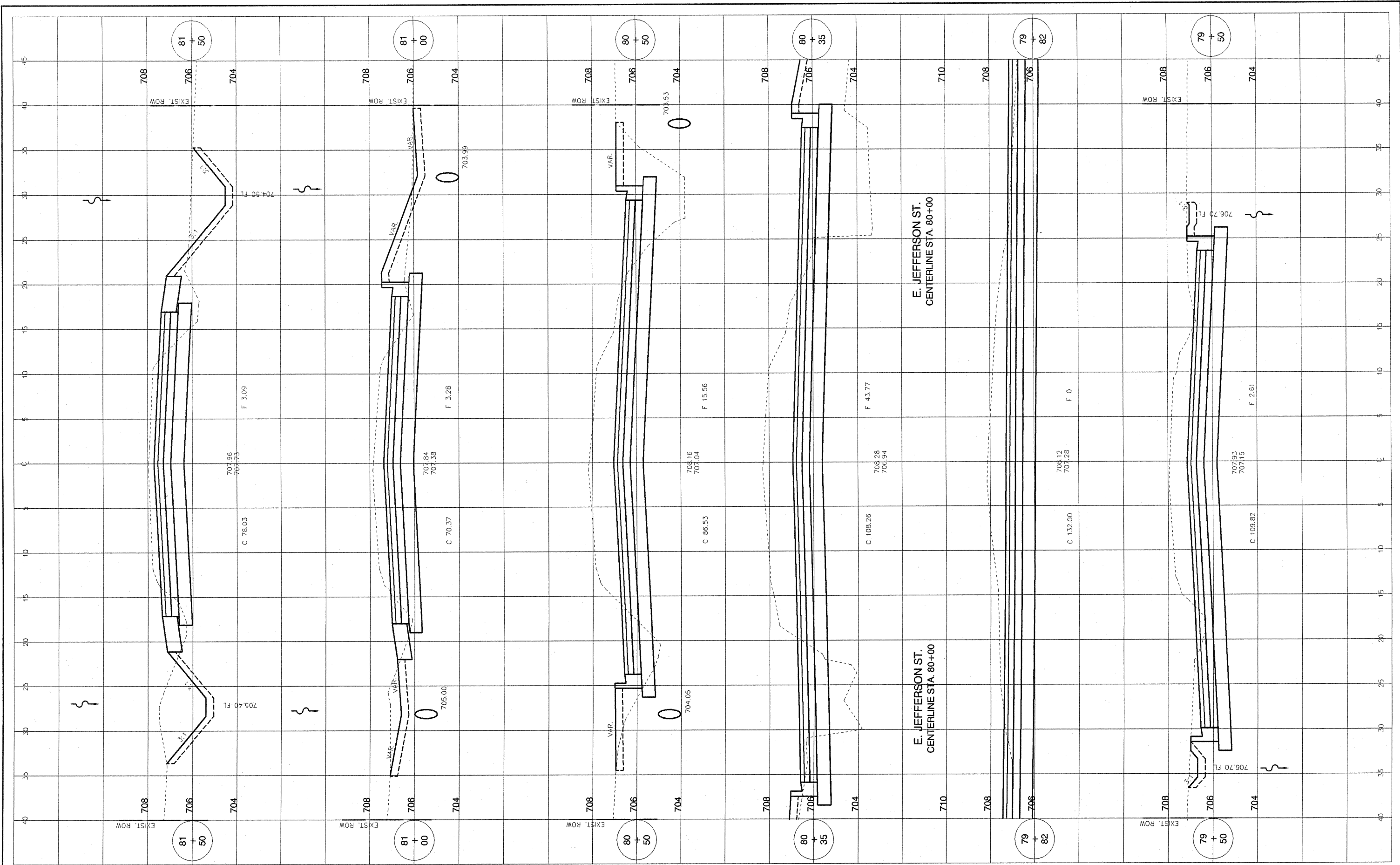


09-112 EP&S/TEN/SL/DWG



M MOHR & KERR ENGINEERING & LAND SURVEYING, P.C.
 7336 N. University Ave. Office: (309) 692-8500
 Peoria, Illinois 61614 Fax: (309) 692-8501
 www.mohrandkerr.com Professional Design Firm #184.005091

DESIGNED	WFS	REVISED
DRAWN	DEH	REVISED
CHECKED	WFS	REVISED
DATE	10-25-10	REVISED

STATE OF ILLINOIS
 DEPARTMENT OF TRANSPORTATION

STREET IMPROVEMENTS EAST JEFFERSON STREET MORTON, ILLINOIS
 CROSS SECTIONS - TENNESSEE AVE.
 SCALE: 1" = 5' H 1" = 2' V SHEET NO. 4 OF 20 SHEETS STA. 79+60 TO STA. 81+50

F.A. ROUTE	SECTION	COUNTY	TOTAL SHEETS	SHEET NO.
6721	07-00116-01-FP	TAZEWELL	20	19
CONTRACT NO. 89490			ILLINOIS FEDERAL ROAD DIST NO. 7	