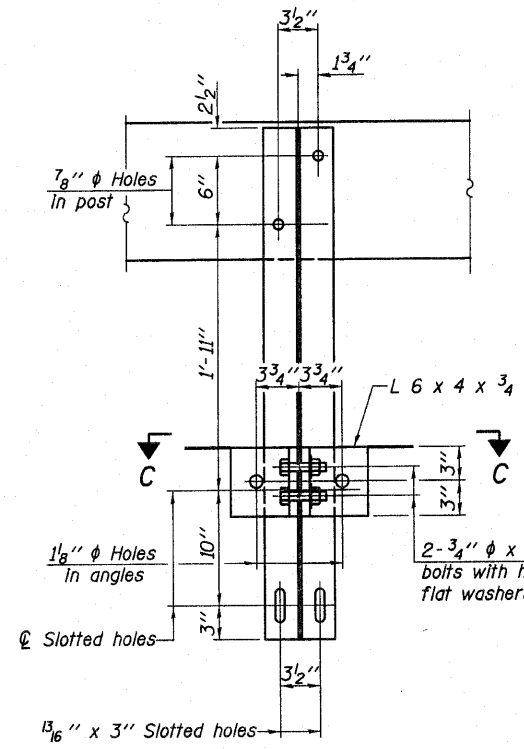
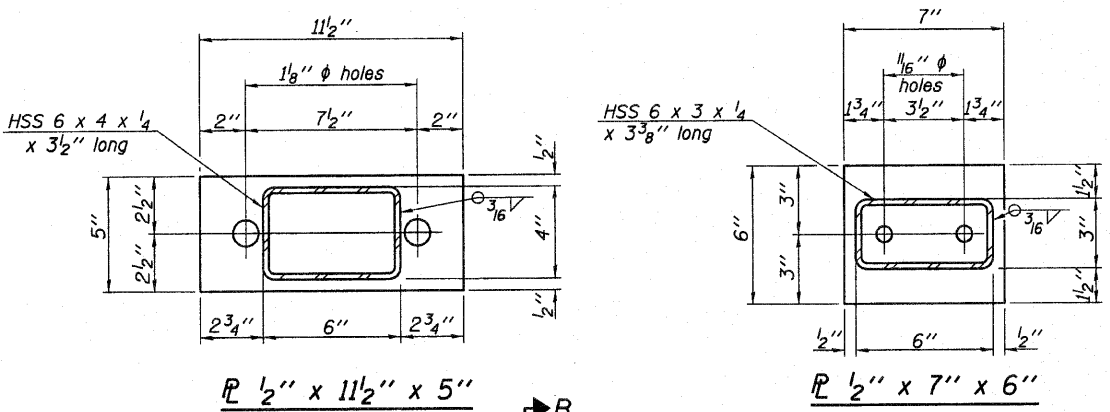
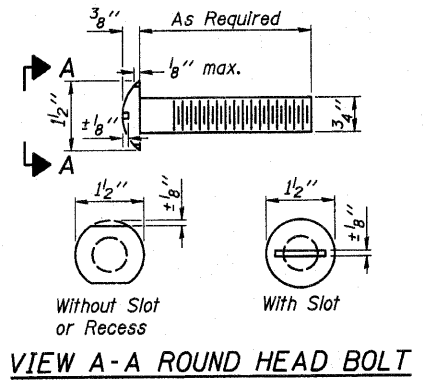
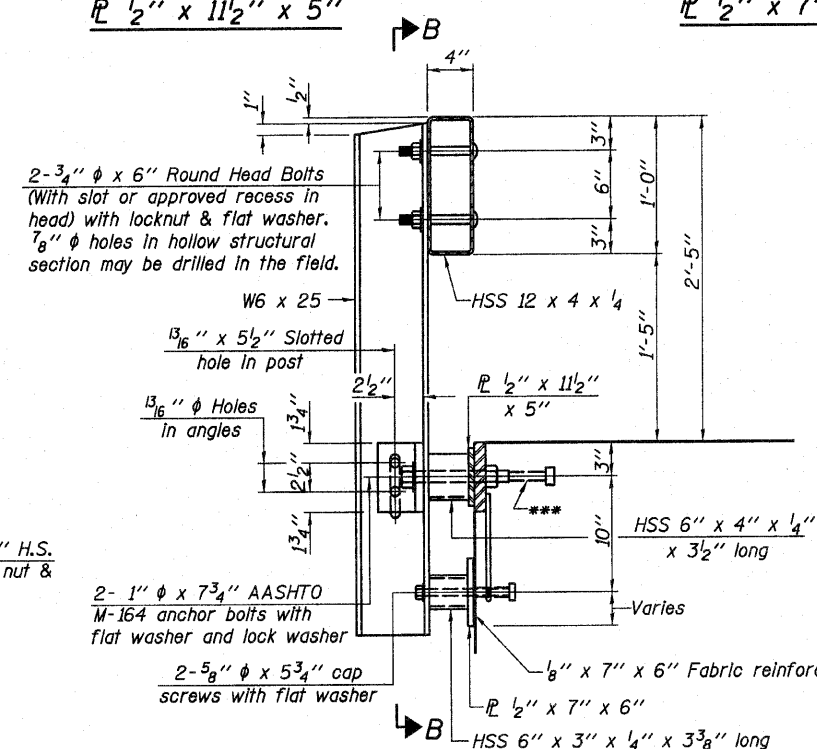


ROUTE NO.	SECTION	COUNTY	TOTAL SHEETS	SHEET NO.
T.R. 442	04-0616-00-BR	MARION	13	11
FEDERAL AID PROJECT	ILLINOIS	PROJECT		

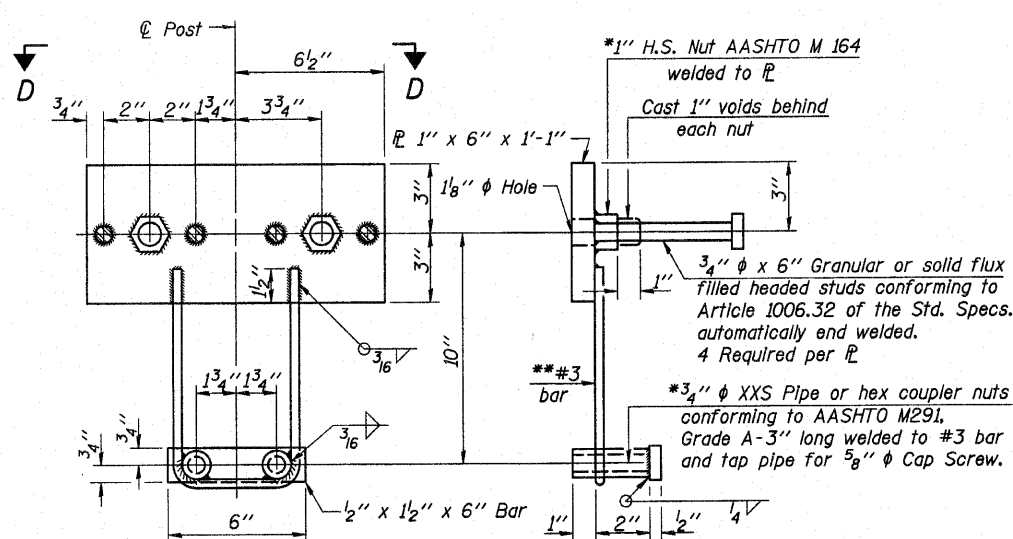
CONTRACT NO. 97451



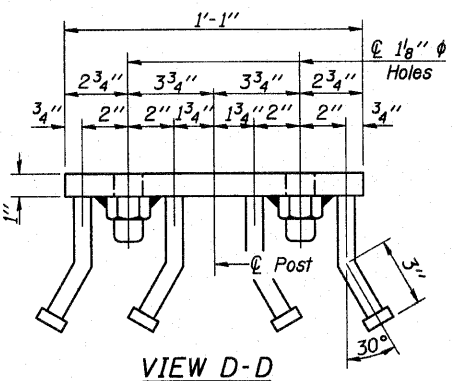
SECTION B-B



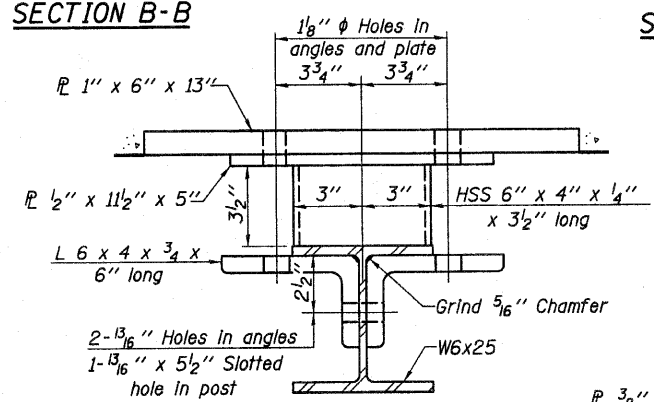
SECTION AT RAILING POST



ANCHOR DEVICE

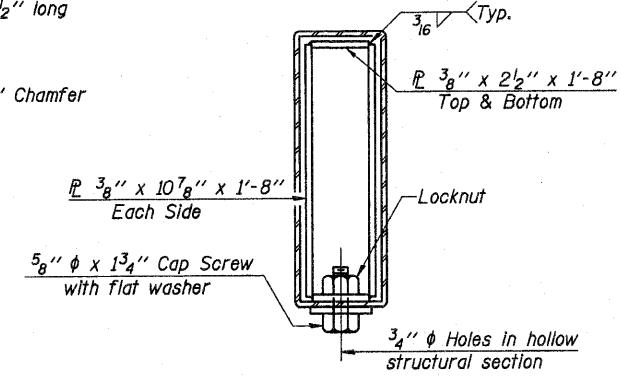


VIEW D-D

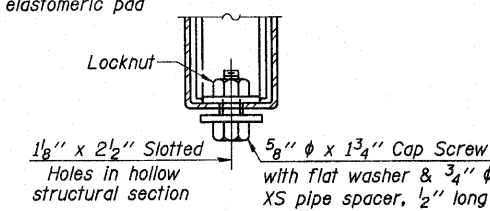


SECTION C-C

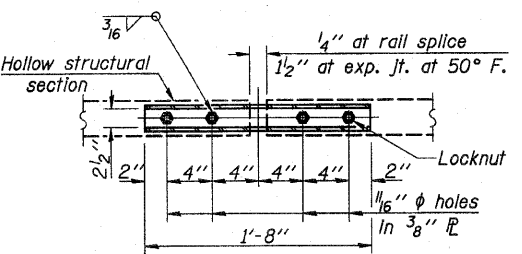
***Whenever the lower insert assemblies interfere with strand locations, the #3 bars shall be cut and adjusted in order to allow raising or lowering of the lower inserts. Maximum adjustment not to exceed 1/2 inch.



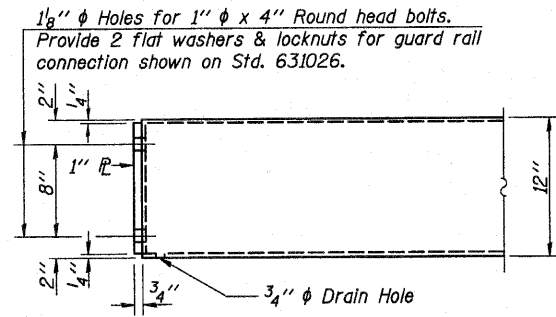
SECTIONS AT RAIL SPLICE



RAIL SPLICE CONNECTION AT EXPANSION JT.



PLAN-BOTTOM SPLICE R TYPICAL



END OF RAIL DETAILS

See sheet 5 for Steel Railing Quantities.

(10'-9" Maximum Post Spacing)

RHUTASEL and ASSOCIATES, INC.
CONSULTING ENGINEERS • LAND SURVEYORS
CENTRALIA, ILLINOIS FREEBURG, ILLINOIS

PREPARED FOR:
AECOM
200705485

Date: 10/27/2010
Design: WDL
Drawn: BLT
Job No.: 50810

STEEL RAILING
TYPE S1