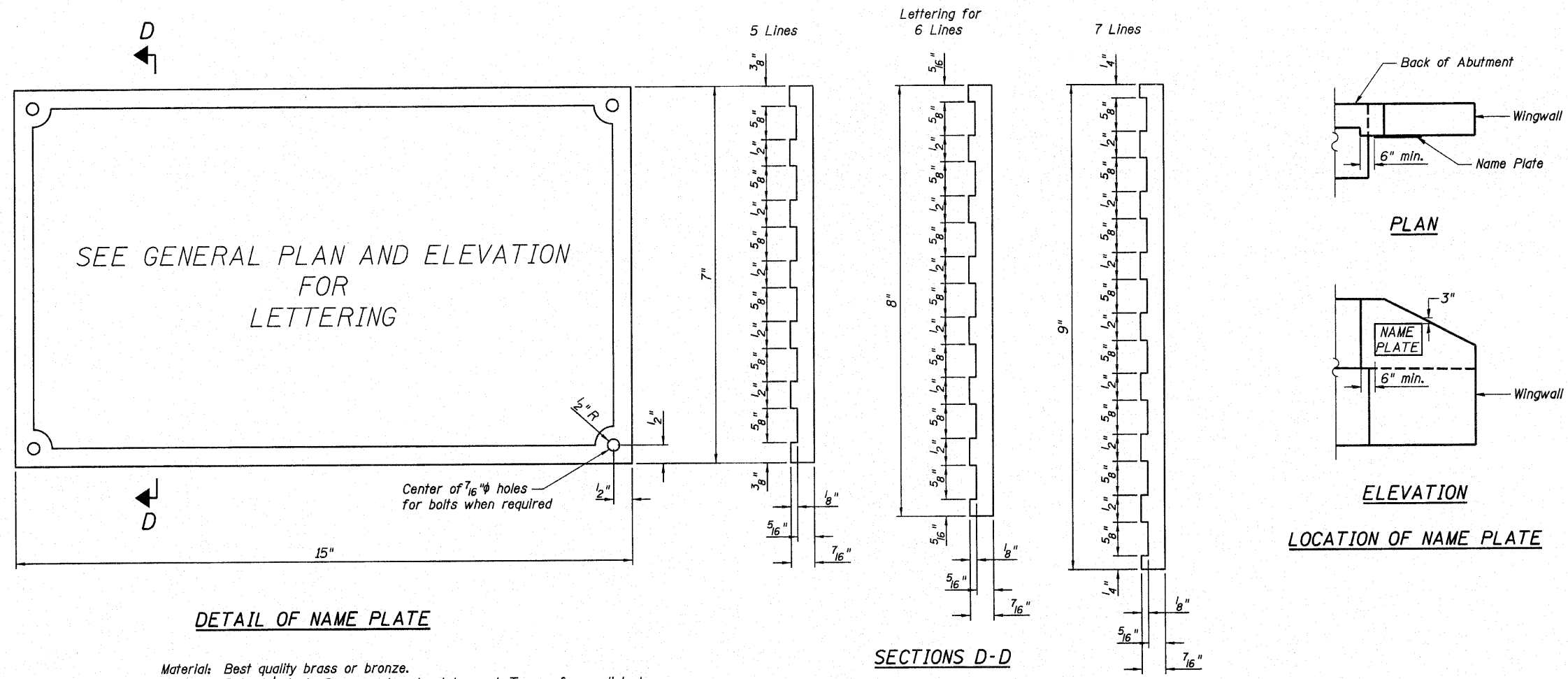
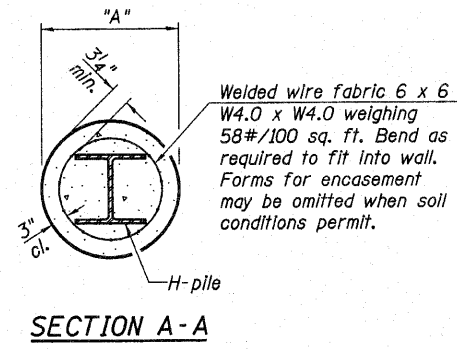
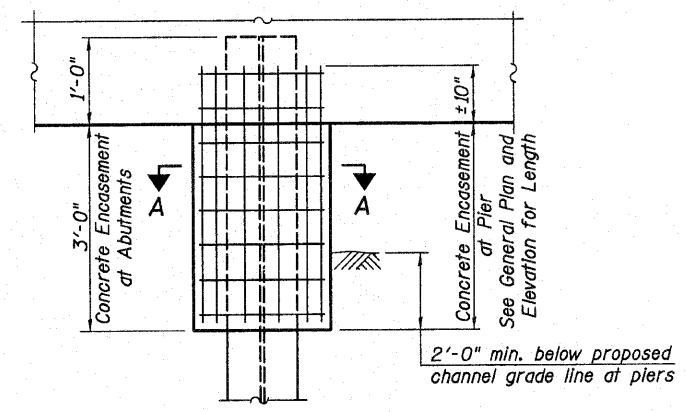


ROUTE NO.	SECTION	COUNTY	TOTAL SHEETS	SHEET NO.
T.R. 442	04-06116-00-BR	MARTON	13	12
FEDERAL AID PROJECT		ILLINOIS	PROJECT	

CONTRACT NO. 97451



Material: Best quality brass or bronze.  
 Border and Lettering: Raised  $\frac{1}{8}$  inch. Square cut and not tapered. Top surface polished.  
 Fastenings: Four lugs at least three inches long, cast on back of plate.



Pile	"A"
HP8	1'-6"
HP10	1'-9"
HP12	2'-0"

**PILE ENCASEMENT QUANTITIES**  
(Steel Piles)

Pile Size	Item	Unit	Quantity
HP10	Concrete Encasement	Cu Yd.	0.086

Quantities per foot of Encasement.

**NAME PLATE & PILE ENCASEMENT DETAILS**

**RHUTASEL and ASSOCIATES, INC.**  
 CONSULTING ENGINEERS • LAND SURVEYORS  
 CENTRALIA, ILLINOIS      FREEBURG, ILLINOIS

PREPARED FOR:  
**AECOM**  
 200705485

Date: 10/27/2010  
 Design: WDL  
 Drawn: BLT  
 Job No.: 50810