

STATE OF ILLINOIS
DEPARTMENT OF TRANSPORTATION

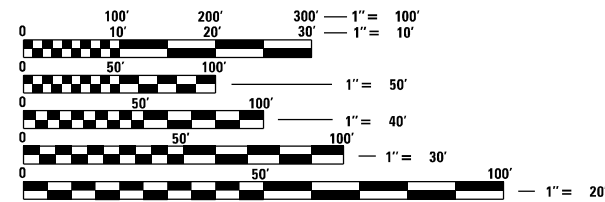
| F.A.P. RTE. | SECTION | COUNTY | TOTAL SHEETS | SHEET NO. |
|-------------|----------|----------|--------------------|-----------|
| 302 | (1-7)Q-1 | ADAMS | 27 | 1 |
| | | ILLINOIS | CONTRACT NO. 72M19 | |

INDEX OF SHEETS

- 1 COVER SHEET
- 2 GENERAL NOTES
- 3 SUMMARY OF QUANTITIES
- 4 - 7 SCHEDULES OF QUANTITIES
- 8 - 9 TYPICAL SECTIONS
- 10 - 16 PLAN SHEETS
- 17 - 21 INTERSECTION DETAILS
- 22 - 27 OUTLET MARKER AND UNDERDRAIN DETAILS

STANDARDS

- 000001-08 701411-09
- 001006 701426-09
- 701101-05 701451-05
- 701106-02 701901-08
- 701201-05 780001-05
- 701400-11 781001-04
- 701401-13 601101-02



FULL SIZE PLANS HAVE BEEN PREPARED USING STANDARD ENGINEERING SCALES, REDUCED SIZED PLANS WILL NOT CONFORM TO STANDARD SCALES. IN MAKING MEASUREMENTS ON REDUCED PLANS, THE ABOVE SCALES MAY BE USED.

J.U.L.I.E.
JOINT UTILITY LOCATION INFORMATION FOR EXCAVATORS
1-800-892-0123
OR 811

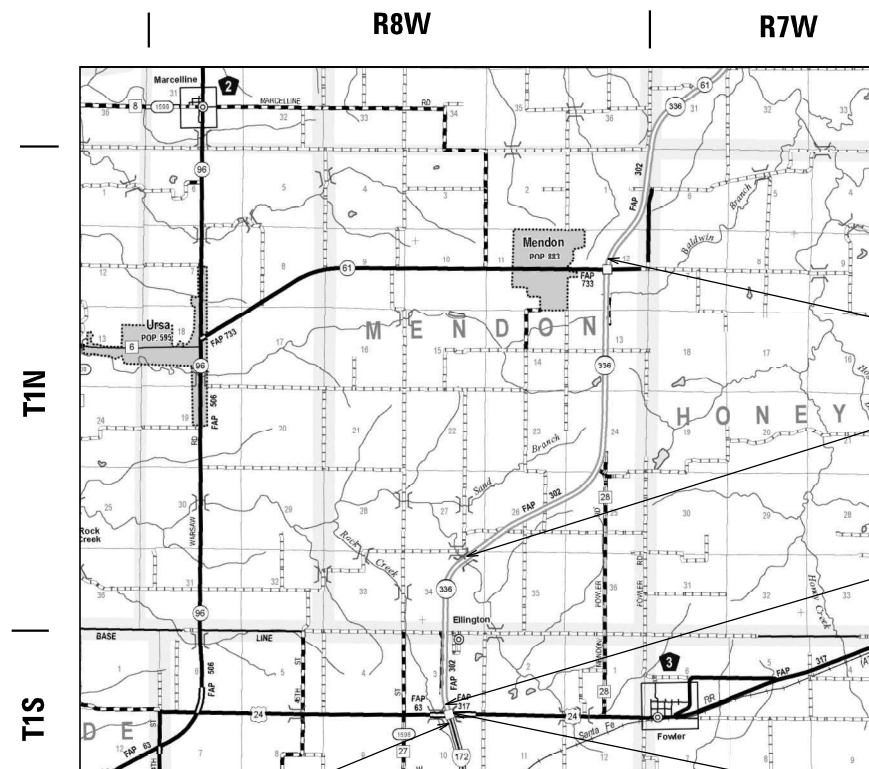
PROJECT ENGINEER : JONATHAN KELLEY
PROJECT MANAGER : BRIAN MINDER

CONTRACT NO. 72M19

**PROPOSED
HIGHWAY PLANS**

FAP 302 (IL ROUTE 110, 336)
SECTION (1-7)Q-1
PROJECT NHPP-IKVC(868)
CAPE SEAL, FOG SEAL, AND MICROSURFACING
ADAMS COUNTY

C-96-119-20



BEGIN SECTION (1-7)Q-1
STA. 246 + 84.55 IL 110/336



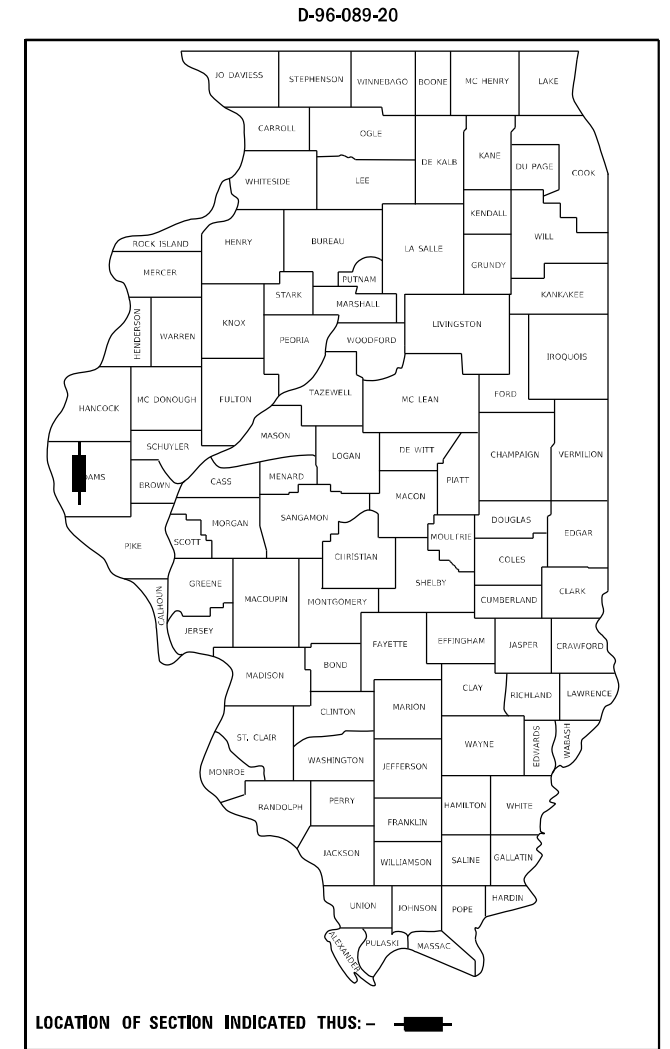
GROSS LENGTH = 34,555.74 FT. = 6.545 MILES
NET LENGTH = 34,043.60 FT. = 6.448 MILES

END SECTION (1-7)Q-1
STA. 344 + 00.00 IL 110/336

BRIDGE OMISSION:
STA. 105 + 94.80 TO
STA. 108 + 83.80
SN 001-0083 NB
SN 001-0082 SB

STA. EQUATION
STA. 249 + 93.32 BK =
STA. 1 + 53.03 AH

BRIDGE OMISSION:
STA. 247 + 29.78 TO
STA. 249 + 52.92
SN 001-0081 NB
STA. 247 + 59.91 TO
STA. 249 + 83.04
SN 001-0080 SB



FUNCTIONAL CLASSIFICATION:
OTHER PRINCIPAL ARTERIAL
ADT = 4,730 (2019)
MU: 330 (2019), SU: 165 (2019), PV: 4,235 (2019)

STATE OF ILLINOIS
DEPARTMENT OF TRANSPORTATION

SUBMITTED October 22 2021

John P. Meyer
REGIONAL ENGINEER

December 10 2021
Stephen M. L...
ENGINEER OF DESIGN AND ENVIRONMENT

December 10 2021
Stephen M. L...
DIRECTOR OF HIGHWAYS PROJECT IMPLEMENTATION

PRINTED BY THE AUTHORITY
OF THE STATE OF ILLINOIS




GENERAL NOTES:

1. THE CONTRACTOR SHALL NOTIFY THE DISTRICT 6 BUREAU OF OPERATIONS AT (217) 785-5306 THREE (3) WEEKS PRIOR TO IMPLEMENTING ANY TRAFFIC CONTROL.
2. THE DISTRICT 6 BUREAU OF OPERATIONS SHALL BE NOTIFIED BY PHONE (217) 785-5306 AT LEAST 14 DAYS PRIOR TO PLACEMENT OF FINAL PAVEMENT MARKINGS.
3. AGGREGATE FOR THE A-1 BITUMINOUS SURFACE TREATMENT MAY BE CA-15, CA-16, OR CA-20.
4. PAVEMENT MARKING REMOVAL PRIOR TO CAPE SEAL SHALL BE IN THE NORTHBOUND DIRECTION ONLY. SOUTHBOUND PAVEMENT MARKINGS SHALL REMAIN IN PLACE.

COMMITMENTS

RATES OF APPLICATION

BITUMINOUS MATERIAL (FOG SEAL) 0.05 POUNDS/SQ FT MAINLINE
 BITUMINOUS MATERIAL (FOG SEAL) 0.08 POUNDS/SQ FT SHLDRS

| | |
|---|---|
| STATE OF ILLINOIS DEPARTMENT OF TRANSPORTATION DIVISION OF HIGHWAYS DISTRICT 6 | |
| EXAMINED | October 18, 2021  ENGINEER OF OPERATIONS |
| EXAMINED | October 14, 2021  ENGINEER OF PROJECT IMPLEMENTATION |
| EXAMINED | October 13, 2021  ENGINEER OF PROGRAM DEVELOPMENT |

REV. - MS

MODEL: D:\b\h\l\...
 FILE: 10/22/2021...
 PROJECT: 72M19...
 USER: min#erbt

| | | |
|-------------------------------|------------------|-----------------|
| USER NAME = min#erbt | DESIGNED = _____ | REVISED = _____ |
| DRAWN = _____ | CHECKED = _____ | REVISED = _____ |
| PLLOT SCALE = 20.0000 " / in. | DATE = _____ | REVISED = _____ |
| PLLOT DATE = 10/22/2021 | | |

**STATE OF ILLINOIS
DEPARTMENT OF TRANSPORTATION**

GENERAL NOTES

SCALE: N/A SHEET 1 OF 1 SHEETS STA. N/A TO STA. N/A

| F.A.P. RTE. | SECTION | COUNTY | TOTAL SHEETS | SHEET NO. |
|---------------------------|----------|--------|--------------|-----------|
| 302 | (1-7)Q-1 | ADAMS | 27 | 2 |
| CONTRACT NO. 72M19 | | | | |
| ILLINOIS FED. AID PROJECT | | | | |

| | | | | 6-01428-0000 CONSTRUCTION CODE 80% FEDERAL 20% STATE ROADWAY | |
|------------|--|--------|----------------|--|-------|
| CODE NO. | ITEM | UNIT | TOTAL QUANTITY | 0005 | RURAL |
| 40400020 | BUMP REMOVAL | EACH | 10 | 10 | |
| 40500001 | FIBER-MODIFIED ASPHALT CRACK SEALING | FOOT | 89,783 | 89,783 | |
| 40500061 | CAPE SEAL | SQ YD | 218,418 | 218,418 | |
| 67000400 | ENGINEER'S FIELD OFFICE, TYPE A | CAL MO | 5 | 5 | |
| 67100100 | MOBILIZATION | L SUM | 1 | 1 | |
| 70100420 | TRAFFIC CONTROL AND PROTECTION, STANDARD 701411 | EACH | 4 | 4 | |
| 70100450 | TRAFFIC CONTROL AND PROTECTION, STANDARD 701201 | L SUM | 1 | 1 | |
| 70100800 | TRAFFIC CONTROL AND PROTECTION, STANDARD 701401 | L SUM | 1 | 1 | |
| 70100820 | TRAFFIC CONTROL AND PROTECTION, STANDARD 701451 | L SUM | 1 | 1 | |
| 70107025 | CHANGEABLE MESSAGE SIGN | CAL DA | 120 | 120 | |
| 70300100 | SHORT TERM PAVEMENT MARKING | FOOT | 21,728 | 21,728 | |
| 70300150 | SHORT-TERM PAVEMENT MARKING REMOVAL | SQ FT | 7,170 | 7,170 | |
| * 78009000 | MODIFIED URETHANE PAVEMENT MARKING - LETTERS AND SYMBOLS | SQ FT | 1,233 | 1,233 | |
| * 78009005 | MODIFIED URETHANE PAVEMENT MARKING - LINE 5" | FOOT | 166,803 | 166,803 | |

* SPECIALTY ITEM

| | | | | 6-01428-0000 CONSTRUCTION CODE 80% FEDERAL 20% STATE ROADWAY | |
|------------|--|-------|----------------|--|-------|
| CODE NO. | ITEM | UNIT | TOTAL QUANTITY | 0005 | RURAL |
| * 78009006 | MODIFIED URETHANE PAVEMENT MARKING - LINE 6" | FOOT | 9,291 | 9,291 | |
| * 78009008 | MODIFIED URETHANE PAVEMENT MARKING - LINE 8" | FOOT | 6,405 | 6,405 | |
| * 78009012 | MODIFIED URETHANE PAVEMENT MARKING - LINE 12" | FOOT | 1,803 | 1,803 | |
| * 78009024 | MODIFIED URETHANE PAVEMENT MARKING - LINE 24" | FOOT | 242 | 242 | |
| * 78100100 | RAISED REFLECTIVE PAVEMENT MARKER | EACH | 1,528 | 1,528 | |
| 78300200 | RAISED REFLECTIVE PAVEMENT MARKER REMOVAL | EACH | 1,528 | 1,528 | |
| 78300201 | PAVEMENT MARKING REMOVAL - GRINDING | SQ FT | 41,397 | 41,397 | |
| X0320157 | CLEANING UNDERDRAIN OUTLETS | EACH | 307 | 307 | |
| X0322279 | OUTLET MARKERS | EACH | 307 | 307 | |
| X0300010 | BITUMINOUS MATERIALS (FOG SEAL) | POUND | 181,317 | 181,317 | |
| X2503000 | MAINTENANCE MOWING | ACRE | 105 | 105 | |
| X6015015 | REMOVE AND REPLACE CONCRETE HEADWALLS FOR PIPE UNDERDRAINS | EACH | 10 | 10 | |
| Z0049799 | PROTECTING OR RESETTING SURVEY MARKERS | EACH | 2 | 2 | |
| Ø Z0076600 | TRAINEES | HOURL | 1,000 | 1,000 | |
| Ø Z0076604 | TRAINEES TRAINING PROGRAM GRADUATE | HOURL | 1,000 | 1,000 | |

Ø 0042

REV. - MS

MODEL: I:\bids\... FILE NAME: ...

| | | | | | | | | | | | | |
|----------------------------|------------------|-----------------|---|------------------------------|--|--|-------------------|------------------|--------------|-----------------|-------------|--------------------|
| USER NAME = min#erbt | DESIGNED - _____ | REVISED - _____ | STATE OF ILLINOIS DEPARTMENT OF TRANSPORTATION | SUMMARY OF QUANTITIES | | | F.A.P. RTE. = 302 | SECTION (1-7)Q-1 | COUNTY ADAMS | TOTAL SHEETS 27 | SHEET NO. 3 | |
| PLT SCALE = 20.0000' / in. | CHECKED - _____ | REVISED - _____ | | | | | SCALE: N/A | SHEET 1 | OF 1 SHEETS | STA. N/A | T STA. N/A | CONTRACT NO. 72M19 |
| PLT DATE = 10/22/2021 | DATE - _____ | REVISED - _____ | | ILLINOIS FED. AID PROJECT | | | | | | | | |

STRIPING SCHEDULE

| STA. | | STA. | LENGTH (FOOT) | 78009005 MOD URETHANE PVT MKG - LINE 5" (FOOT) | | 78009006 MOD URETHANE PVT MKG - LINE 6" (WHITE) (FOOT) | 78009008 MOD URETHANE PVT MKG - LINE 8" (WHITE) (FOOT) | 78009012 MOD URETHANE PVT MKG - LINE 12" (WHITE) (FOOT) | 78009024 MOD URETHANE PVT MKG - LINE 24" (WHITE) (FOOT) | 78009000 MOD URETHANE PVT MKG - LTRS & SYM (SQ FT) | 78300201 PAVT MKG REM - GRINDING (SQ FT) | 70300100 SHORT-TERM PVT MKG (FOOT) | 70300150 SHORT-TERM PVT MKG REM (SQ FT) | |
|---|----|-----------|------------------|--|--------|---|---|--|--|---|---|---|--|--|
| | | | | WHITE | YELLOW | | | | | | | | | |
| | | | | NB I-172 MAINLINE | | | | | | | | | | |
| 246+59.00 | to | 247+30.00 | 71 | 89 | 71 | | | | | | 67 | 26 | 8 | |
| 247+30.00 | to | 249+53.00 | 223 | 279 | 223 | | | | | | | | | |
| 249+53.00 | to | 249+93.32 | 40 | 50 | 40 | | | | | | 38 | 15 | 5 | |
| STA. EQ. 249+93.32 BK = 1+53.03 AH | | | | | | | | | | | | | | |
| 001+53.03 | to | 017+21.00 | 1,568 | 1,960 | 1,568 | | | | | | 1,482 | 564 | 186 | |
| 017+21.00 | to | 023+56.00 | 635 | 794 | 635 | | 1,270 | | | | 1,451 | 330 | 109 | |
| 023+56.00 | to | 030+09.00 | 653 | 816 | 653 | 163 | | | | | 699 | 235 | 78 | |
| 030+09.00 | to | 048+55.00 | 1,846 | 2,308 | 1,846 | | | | | | 1,744 | 665 | 219 | |
| 048+55.00 | to | 061+55.00 | 1,300 | 1,625 | 1,300 | 681 | 224 | 89 | 23 | 100 | 1,954 | 588 | 194 | |
| 061+55.00 | to | 081+34.00 | 1,979 | 2,474 | 1,979 | | | | | | 1,870 | 712 | 235 | |
| 081+34.00 | to | 090+66.00 | 932 | 1,165 | 932 | 260 | | | | 31 | 1,042 | 376 | 124 | |
| 090+66.00 | to | 105+94.80 | 1,529 | 1,911 | 1,529 | | | | | | 1,445 | 550 | 182 | |
| 105+94.80 | to | 108+83.80 | 289 | 361 | 289 | | | | | | 273 | | | |
| 108+83.80 | to | 134+55.00 | 2,571 | 3,214 | 2,571 | | | | | | 2,430 | 926 | 305 | |
| 134+55.00 | to | 146+45.00 | 1,190 | 1,488 | 1,190 | 670 | 301 | 266 | 51 | 100 | 2,129 | 1,096 | 362 | |
| 146+45.00 | to | 162+57.00 | 1,612 | 2,015 | 1,612 | | | | | | 1,523 | 1,322 | 436 | |
| 162+57.00 | to | 177+04.00 | 1,447 | 1,809 | 1,447 | 725 | 167 | | 10 | 100 | 2,089 | 641 | 212 | |
| 177+04.00 | to | 188+34.00 | 1,130 | 1,413 | 1,130 | | | | | | 1,068 | 407 | 134 | |
| 188+34.00 | to | 197+66.00 | 932 | 1,165 | 932 | 264 | | | | 31 | 1,044 | 376 | 124 | |
| 197+66.00 | to | 206+92.00 | 926 | 1,158 | 926 | | | | | | 875 | 333 | 110 | |
| 206+92.00 | to | 221+06.00 | 1,414 | 1,768 | 1,414 | 842 | 300 | 137 | 24 | 116 | 2,259 | 629 | 208 | |
| 221+06.00 | to | 235+34.00 | 1,428 | 1,785 | 1,428 | | | | | | 1,349 | 514 | 170 | |
| 235+34.00 | to | 244+76.00 | 942 | 1,178 | 942 | 263 | | | | 31 | 1,053 | 379 | 125 | |
| 244+76.00 | to | 251+21.00 | 645 | 806 | 645 | | | | | | 610 | 232 | 77 | |
| 251+21.00 | to | 260+53.00 | 932 | 1,165 | 932 | 264 | | | | 31 | 1,044 | 376 | 124 | |
| 260+53.00 | to | 287+11.00 | 2,658 | 3,323 | 2,658 | | | | | | 2,512 | 957 | 316 | |
| 287+11.00 | to | 299+94.00 | 1,283 | 1,604 | 1,283 | 683 | 210 | 56 | 25 | 100 | 1,901 | 582 | 192 | |
| 299+94.00 | to | 328+29.00 | 2,835 | 3,544 | 2,835 | | | | | | 2,679 | 1,021 | 337 | |
| 328+29.00 | to | 330+74.00 | 245 | 306 | 245 | 62 | | | | | 263 | 88 | 29 | |
| 330+74.00 | to | 334+51.00 | 377 | 471 | 377 | | 754 | 156 | | | 1,017 | 196 | 65 | |
| 334+51.00 | to | 344+04.00 | 953 | 1,191 | 953 | | | | | | 901 | 343 | 113 | |
| US 24 RAMP A | | | | | | | | | | | | | | |
| 001+22.00 | to | 019+70.00 | 1,848 | 1,848 | 1,848 | | | | | | 1,552 | 296 | 98 | |
| IL 61 RAMP C | | | | | | | | | | | | | | |
| 006+22.00 | to | 017+94.00 | 1,172 | 1,172 | 1,172 | | 76 | | | | 1,035 | 188 | 62 | |

Model - Default
 File - Model - p:\plottest\paw_bentley.com\pwwid\Documents\DOT - Offices\District - E\Projects\0672M19\CADD\DATA\CAD\Sheet\0672M19.dwg - sheet.dwg

| | | |
|----------------------------|------------------|-----------------|
| USER NAME = mindert | DESIGNED - _____ | REVISED - _____ |
| | DRAWN - _____ | REVISED - _____ |
| PLOT SCALE = 20.0000' / 1" | CHECKED - _____ | REVISED - _____ |
| PLOT DATE = 10/22/2021 | DATE - _____ | REVISED - _____ |

**STATE OF ILLINOIS
DEPARTMENT OF TRANSPORTATION**

| SCHEDULE OF QUANTITIES | | | |
|------------------------|---------|-------------|----------------------|
| SCALE: N/A | SHEET 1 | OF 4 SHEETS | STA. N/A TO STA. N/A |

| F.A.P. RTE. | SECTION | COUNTY | TOTAL SHEETS | SHEET NO. |
|---------------------------|----------|--------|--------------|-----------|
| 302 | (1-7)Q-1 | ADAMS | 27 | 4 |
| CONTRACT NO. 72M19 | | | | |
| ILLINOIS FED. AID PROJECT | | | | |

CRACK SEALING SCHEDULE

| STA. | | LENGTH (FOOT) | LOCATION | 40500001 FIBER-MOD ASPH CRACK SEAL (FOOT) |
|---|--------------|------------------|-----------------|---|
| NB I-172 MAINLINE | | | | |
| 246+59.00 | to 247+30.00 | 71 | CL JT | 71 |
| BRIDGE OMISSION SN 001-0081 | | | | |
| 249+53.00 | to 249+93.32 | 40 | CL JT | 40 |
| STA. EQ. 249+93.32 BK = 1+53.03 AH | | | | |
| 001+53.03 | to 105+94.80 | 10,442 | CL JT | 10,442 |
| BRIDGE OMISSION SN 001-0083 | | | | |
| 108+83.80 | to 344+00.00 | 23,516 | CL JT | 23,516 |
| SB I-172 MAINLINE | | | | |
| 246+59.00 | to 247+60.00 | 101 | CL JT | 101 |
| BRIDGE OMISSION SN 001-0080 | | | | |
| 249+83.00 | to 249+93.00 | 10 | CL JT | 10 |
| STA. EQ. 249+93.32 BK = 1+53.03 AH | | | | |
| 001+53.00 | to 105+94.80 | 10,442 | CL JT | 10,442 |
| BRIDGE OMISSION SN 001-0082 | | | | |
| 108+83.80 | to 344+00.00 | 23,516 | CL JT | 23,516 |
| BLOOMFIELD RD. | | | | |
| 48+55.00 | to 61+55.00 | 1,300 | ALL JOINTS | 2,553 |
| FE STA. 86+00 | | | | |
| 81+34.00 | to 90+66.00 | 932 | ALL JOINTS | 991 |
| TR 205 | | | | |
| 134+55.00 | to 146+45.00 | 1,190 | ALL JOINTS | 2,905 |
| TR 170 | | | | |
| 162+57.00 | to 177+04.00 | 1,447 | ALL JOINTS | 2,930 |
| FE STA. 193+00 | | | | |
| 188+34.00 | to 197+66.00 | 932 | ALL JOINTS | 1,018 |
| CH 28 | | | | |
| 206+97.00 | to 221+05.00 | 1,408 | ALL JOINTS | 2,430 |
| FE STA. 240+00 | | | | |
| 235+34.00 | to 244+76.00 | 942 | ALL JOINTS | 1,050 |
| FE STA. 255+80 | | | | |
| 251+21.00 | to 260+53.00 | 932 | ALL JOINTS | 1,018 |
| TR 147 | | | | |
| 287+11.00 | to 299+94.00 | 1,283 | ALL JOINTS | 2,710 |
| US 24 RAMP A | | | EOP JTS GORE | 1,266 |
| US 24 RAMP B | | | EOP JTS GORE | 754 |
| IL 61 RAMP C | | | EOP JTS GORE | 754 |
| IL 61 RAMP D | | | EOP JTS GORE | 1,266 |
| TOTAL= | | | | 89,783 |

SURVEY MARKERS SCHEDULE

| STA. | OFFSET | DIR | Z0049799 PROTECTING & RESETTING SURVEY MKRS (EACH) |
|----------------|--------|-----|--|
| 266+71.75 | 34.33' | RT | 1 |
| 320+03.13 | 32.75' | RT | 1 |
| TOTAL = | | | 2 |

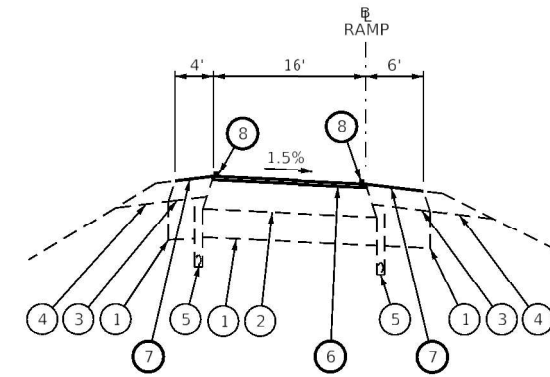
Model: Default
 File: Model - pw_bentley.com_PWD01Documents\DOT_Civil\as\District_6\Projects\067219\CADD\as\CAD\sheet\067219.dwg_schedules.dgn

| | | |
|----------------------------|------------------|-----------------|
| USER NAME = mindert | DESIGNED - _____ | REVISED - _____ |
| PLOT SCALE = 20.0000' / 1" | CHECKED - _____ | REVISED - _____ |
| PLOT DATE = 10/22/2021 | DATE - _____ | REVISED - _____ |

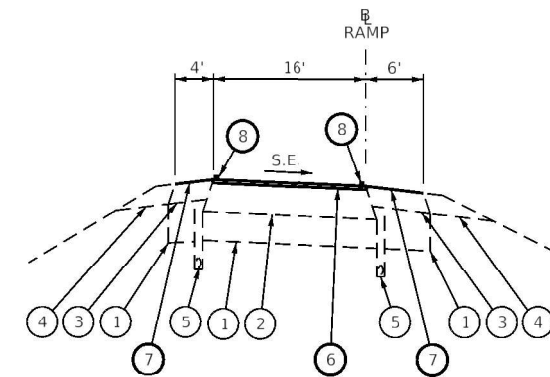
**STATE OF ILLINOIS
DEPARTMENT OF TRANSPORTATION**

| SCHEDULE OF QUANTITIES | | | |
|------------------------|---------------------|----------|--------------|
| F.A.P. RTE. | SECTION | COUNTY | TOTAL SHEETS |
| 302 | (1-7)Q-1 | ADAMS | 27 |
| | | | 7 |
| CONTRACT NO. 72M19 | | | |
| SCALE: N/A | SHEET 4 OF 4 SHEETS | STA. N/A | TO STA. N/A |

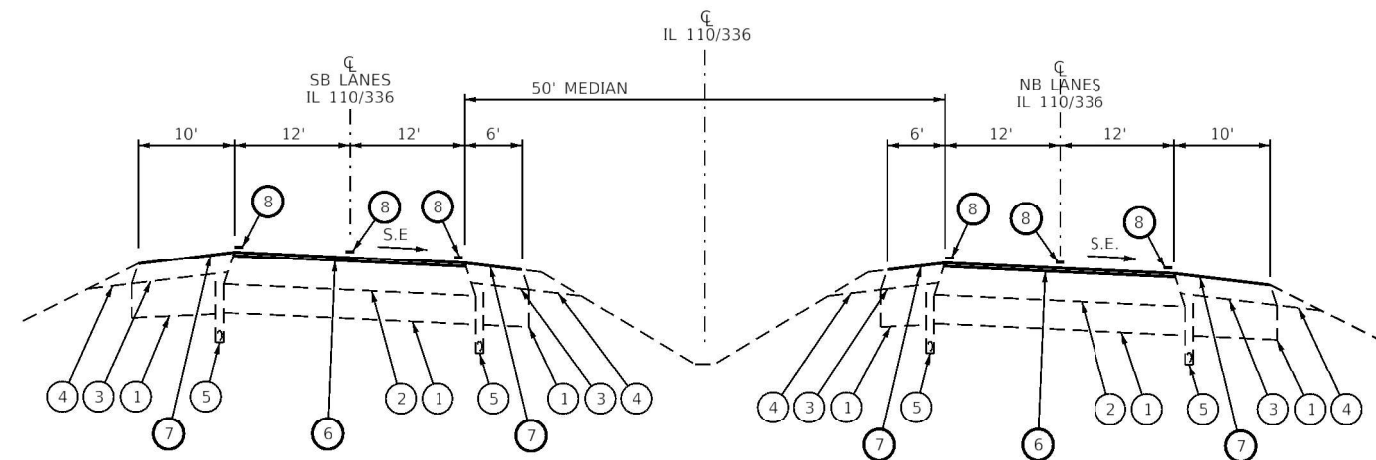
| | |
|----------|------------------|
| ILLINOIS | FED. AID PROJECT |
|----------|------------------|



STA. 1+21.78 TO STA. 2+53.60 RAMP A US 24
 STA. 7+23.90 TO STA. 14+74.17 RAMP A US 24
 STA. 6+22.00 TO STA. 14+99.07 RAMP B US 24
 STA. 18+42.61 TO STA. 20+93.79 RAMP B US 24
 STA. 22+93.71 TO STA. 23+93.68 RAMP B US 24
 STA. 6+22.00 TO STA. 8+00.93 RAMP C IL 61
 STA. 11+61.69 TO STA. 17+94.15 RAMP C IL 61
 STA. 1+55.42 TO STA. 6+30.91 RAMP D IL 61



STA. 2+53.60 TO STA. 7+23.90 (LT) RAMP A US 24
 STA. 14+74.17 TO STA. 21+06.65 (RT) RAMP A US 24
 STA. 14+99.07 TO STA. 18+42.61 (RT) RAMP B US 24
 STA. 20+93.79 TO STA. 22+93.71 (LT) RAMP B US 24
 STA. 8+00.93 TO STA. 11+61.69 (RT) RAMP C IL 61
 STA. 6+30.91 TO STA. 10+70.37 (RT) RAMP D IL 61



STA. 82+32.53 TO STA. 103+41.58 (RT)
 STA. 142+07.36 TO STA. 147+12.90 (RT)
 STA. 189+40.66 TO STA. 229+24.88 (LT)
 STA. 244+75.75 TO STA. 250+48.47 (LT)
 STA. 341+30.66 TO STA. 344+03.74 (RT)

LEGEND

- ① EXIST. IMPROVED SUBGRADE, 12"
- ② EXIST. HMA PAVEMENT, 13 1/2"
- ③ EXIST. HMA SHOULDER, 8"
- ④ EXIST. AGGREGATE SHOULDERS
- ⑤ EXIST. PIPE UNDERDRAINS
- ⑥ PROP. CAPE SEAL
- ⑦ PROP. BITUMINOUS MATERIALS (FOG SEAL)
- ⑧ PROP. PAVEMENT MARKINGS

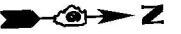
**STATE OF ILLINOIS
 DEPARTMENT OF TRANSPORTATION**

TYPICAL SECTIONS

| | | |
|----------------------------|------------------|-----------------|
| USER NAME = mindert | DESIGNED - _____ | REVISED - _____ |
| DRAWN - _____ | REVISED - _____ | |
| PLOT SCALE = 20.0000' / 1" | CHECKED - _____ | REVISED - _____ |
| PLOT DATE = 10/22/2021 | DATE - _____ | REVISED - _____ |

SCALE: N/A SHEET 2 OF 2 SHEETS STA. N/A TO STA. N/A

| | | | | |
|---------------------------|------------------|--------------|-----------------|-------------|
| F.A.P. RTE. 302 | SECTION (1-7)Q-1 | COUNTY ADAMS | TOTAL SHEETS 27 | SHEET NO. 9 |
| CONTRACT NO. 72M19 | | | | |
| ILLINOIS FED. AID PROJECT | | | | |



EXIST. CURVE SA2106
 PI STA. = 21+94.18
 $\Delta = 12^\circ 59' 41''$ (LT)
 $D = 6^\circ 30' 00''$
 $R = 881.48'$
 $T = 100.39'$
 $L = 199.92'$
 $E = 5.70'$
 $e = \text{---}$
 T.R. =
 S.E. RUN =
 P.C. STA. = 20+93.79
 P.T. STA. = 22+93.71

EXIST. CURVE SA2107
 PI STA. = 16+71.67
 $\Delta = 13^\circ 44' 32''$ (RT)
 $D = 4^\circ 00' 00''$
 $R = 1,432.35'$
 $T = 172.60'$
 $L = 343.54'$
 $E = 10.36'$
 $e = \text{---}$
 T.R. =
 S.E. RUN =
 P.C. STA. = 14+99.07
 P.T. STA. = 18+42.61

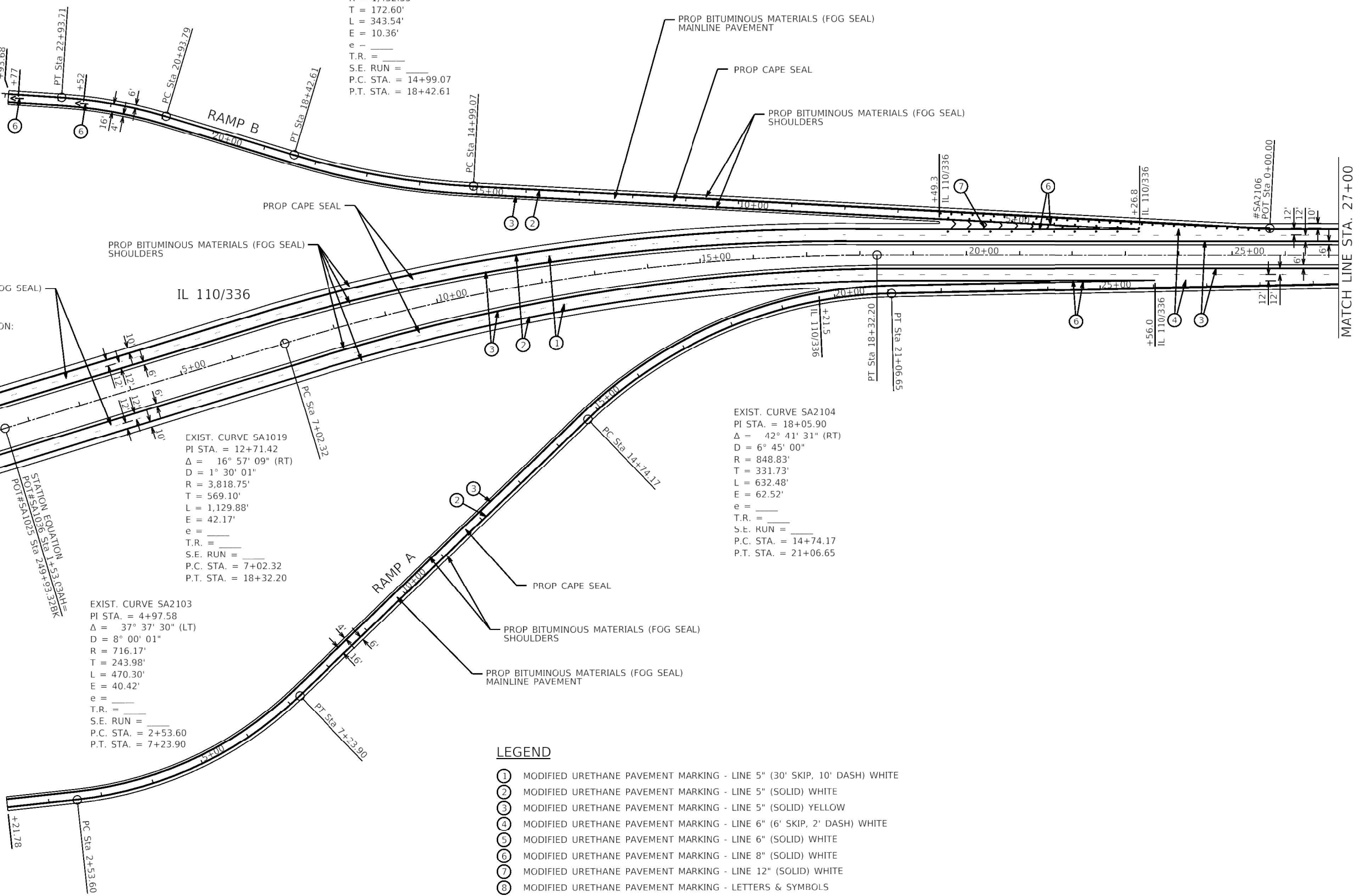
EXIST. CURVE SA2104
 PI STA. = 18+05.90
 $\Delta = 42^\circ 41' 31''$ (RT)
 $D = 6^\circ 45' 00''$
 $R = 848.83'$
 $T = 331.73'$
 $L = 632.48'$
 $E = 62.52'$
 $e = \text{---}$
 T.R. =
 S.E. RUN =
 P.C. STA. = 14+74.17
 P.T. STA. = 21+06.65

EXIST. CURVE SA1019
 PI STA. = 12+71.42
 $\Delta = 16^\circ 57' 09''$ (RT)
 $D = 1^\circ 30' 01''$
 $R = 3,818.75'$
 $T = 569.10'$
 $L = 1,129.88'$
 $E = 42.17'$
 $e = \text{---}$
 T.R. =
 S.E. RUN =
 P.C. STA. = 7+02.32
 P.T. STA. = 18+32.20

EXIST. CURVE SA2103
 PI STA. = 4+97.58
 $\Delta = 37^\circ 37' 30''$ (LT)
 $D = 8^\circ 00' 01''$
 $R = 716.17'$
 $T = 243.98'$
 $L = 470.30'$
 $E = 40.42'$
 $e = \text{---}$
 T.R. =
 S.E. RUN =
 P.C. STA. = 2+53.60
 P.T. STA. = 7+23.90

BRIDGE PAVING OMISSION:
 STA 247+29.78 TO
 STA 249+52.92 NB
 SN 001-0081
 STA 247+59.91 TO
 STA 249+83.04 SB
 SN 001-0080

BEGIN SECTION (1-7) O-1
 STA 246+84.55 IL 110/336



LEGEND

- ① MODIFIED URETHANE PAVEMENT MARKING - LINE 5" (30' SKIP, 10' DASH) WHITE
- ② MODIFIED URETHANE PAVEMENT MARKING - LINE 5" (SOLID) WHITE
- ③ MODIFIED URETHANE PAVEMENT MARKING - LINE 5" (SOLID) YELLOW
- ④ MODIFIED URETHANE PAVEMENT MARKING - LINE 6" (6' SKIP, 2' DASH) WHITE
- ⑤ MODIFIED URETHANE PAVEMENT MARKING - LINE 6" (SOLID) WHITE
- ⑥ MODIFIED URETHANE PAVEMENT MARKING - LINE 8" (SOLID) WHITE
- ⑦ MODIFIED URETHANE PAVEMENT MARKING - LINE 12" (SOLID) WHITE
- ⑧ MODIFIED URETHANE PAVEMENT MARKING - LETTERS & SYMBOLS
- ▲ RAISED REFLECTIVE PAVEMENT MARKER, AMBER
- ◁ RAISED REFLECTIVE PAVEMENT MARKER, WHITE

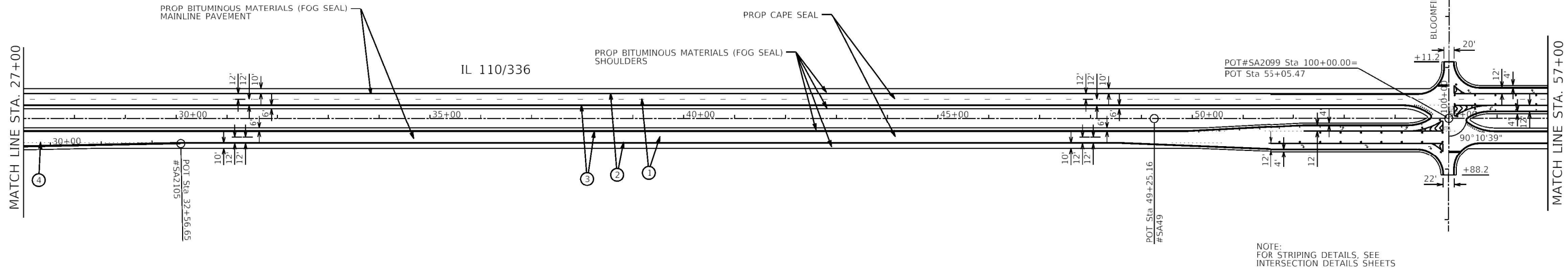
MODEL: Default
 FILE: Model - pav.mxd
 PROJECT: C:\Users\minderbt\OneDrive\Documents\DOT - Office\District 6\Projects\0672M19\CADD\Drawings\CAD\sheet\0672M19.dwg
 PLOT SCALE = 200.0000" / in.
 PLOT DATE = 10/22/2021

| | | |
|----------------------|------------------|-----------------|
| USER NAME = minderbt | DESIGNED - _____ | REVISED - _____ |
| DRAWN - _____ | REVISOR - _____ | REVISOR - _____ |
| CHECKED - _____ | REVISOR - _____ | REVISOR - _____ |
| DATE - _____ | REVISOR - _____ | REVISOR - _____ |

**STATE OF ILLINOIS
 DEPARTMENT OF TRANSPORTATION**

| | |
|--------------------|---------------------|
| PLAN SHEETS | |
| SCALE: 1" = 100' | SHEET 1 OF 7 SHEETS |
| STA. 246+88.55 | TO STA. 27+00.00 |

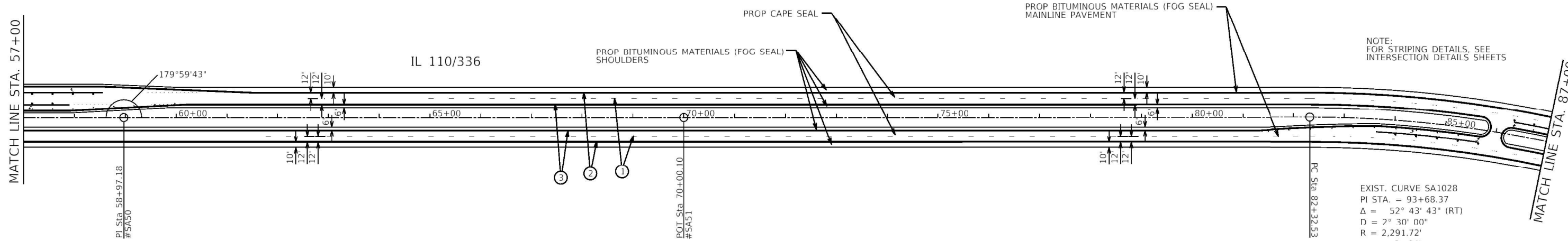
| | | | | |
|-----------------------------|------------------|--------------|-----------------|--------------|
| F.A.P. RTE. 302 | SECTION (1-7)Q-1 | COUNTY ADAMS | TOTAL SHEETS 27 | SHEET NO. 10 |
| CONTRACT NO. 72M19 | | | | |
| ILLINOIS FED. AID PROJECT | | | | |



NOTE:
FOR STRIPING DETAILS, SEE
INTERSECTION DETAILS SHEETS

LEGEND

- ① MODIFIED URETHANE PAVEMENT MARKING - LINE 5" (30' SKIP, 10' DASH) WHITE
- ② MODIFIED URETHANE PAVEMENT MARKING - LINE 5" (SOLID) WHITE
- ③ MODIFIED URETHANE PAVEMENT MARKING - LINE 5" (SOLID) YELLOW
- ④ MODIFIED URETHANE PAVEMENT MARKING - LINE 6" (6' SKIP, 2' DASH) WHITE
- ⑤ MODIFIED URETHANE PAVEMENT MARKING - LINE 6" (SOLID) WHITE
- ⑥ MODIFIED URETHANE PAVEMENT MARKING - LINE 8" (SOLID) WHITE
- ⑦ MODIFIED URETHANE PAVEMENT MARKING - LINE 12" (SOLID) WHITE
- ⑧ MODIFIED URETHANE PAVEMENT MARKING - LETTERS & SYMBOLS
- ▲ RAISED REFLECTIVE PAVEMENT MARKER, AMBER
- △ RAISED REFLECTIVE PAVEMENT MARKER, WHITE



NOTE:
FOR STRIPING DETAILS, SEE
INTERSECTION DETAILS SHEETS

EXIST. CURVE SA1028
PI STA. = 93+68.37
 $\Delta = 52^\circ 43' 43''$ (RT)
D = 2° 30' 00"
R = 2,291.72'
T = 1,135.84'
L = 2,109.04'
E = 266.04'
e = _____
T.R. = _____
S.E. RUN = _____
P.C. STA. = 02+32.53
P.T. STA. = 103+41.58

MODEL: Default
 FILE: Model - pwwildcat.pwwildcat.dgn
 PROJECT: D:\Projects\DOT\Office\Districts\AD\Projects\72M19\CAD\Drawings\DOT\72M19_4ht.dwg
 PLOT DATE: 10/22/2021

| | | |
|------------------------------|-------------------|-----------------|
| USER NAME = mindert | DESIGNED - _____ | REVISED - _____ |
| DRAWN - _____ | REVISIONS - _____ | |
| PLOT SCALE = 200.0000' / in. | CHECKED - _____ | REVISED - _____ |
| PLOT DATE = 10/22/2021 | DATE - _____ | REVISED - _____ |

**STATE OF ILLINOIS
DEPARTMENT OF TRANSPORTATION**

| | |
|--------------------|---------------------|
| PLAN SHEETS | |
| SCALE: 1" = 100' | SHEET 2 OF 7 SHEETS |
| STA. 27+00.00 | TO STA. 87+00.00 |

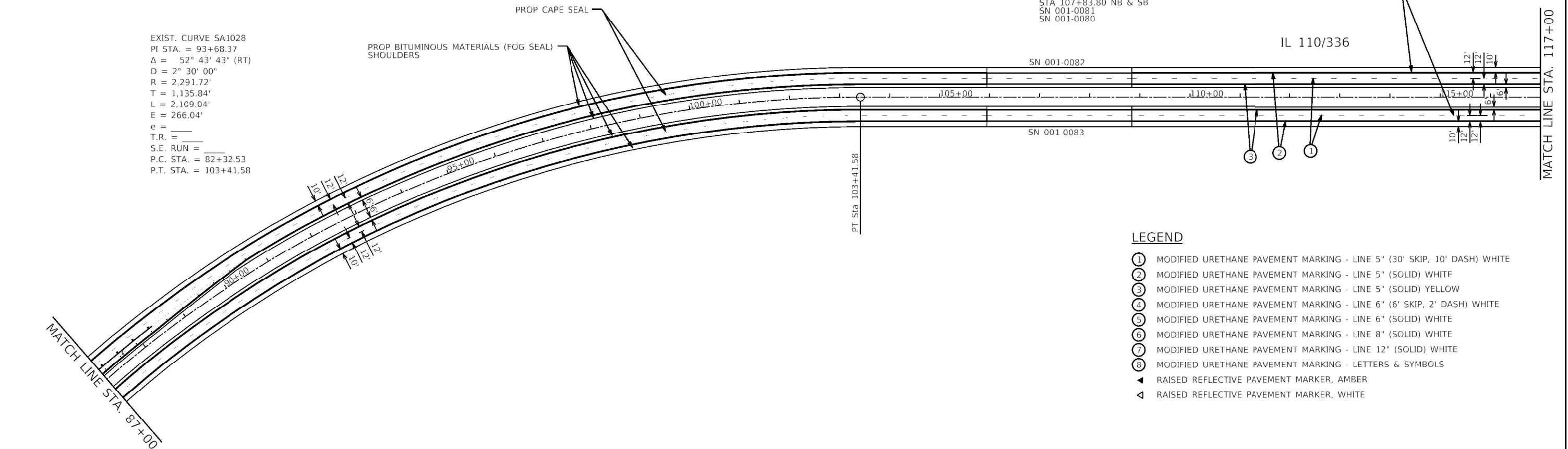
| | | | | |
|---------------------------|------------------|--------------|-----------------|--------------|
| F.A.P. RTE. 302 | SECTION (1-7)Q-1 | COUNTY ADAMS | TOTAL SHEETS 27 | SHEET NO. 11 |
| CONTRACT NO. 72M19 | | | | |
| ILLINOIS FED. AID PROJECT | | | | |

EXIST. CURVE SA1028
 PI STA. = 93+68.37
 $\Delta = 52^\circ 43' 43''$ (RT)
 $D = 2^\circ 30' 00''$
 $R = 2,291.72'$
 $T = 1,135.84'$
 $L = 2,109.04'$
 $E = 266.04'$
 $e =$
 T.R. =
 S.E. RUN =
 P.C. STA. = 82+32.53
 P.T. STA. = 103+41.58

BRIDGE PAVING OMISSION:
 STA 105+94.80 TO
 STA 107+83.80 NB & SB
 SN 001-0081
 SN 001-0080

PROP BITUMINOUS MATERIALS (FOG SEAL)
 MAINLINE PAVEMENT

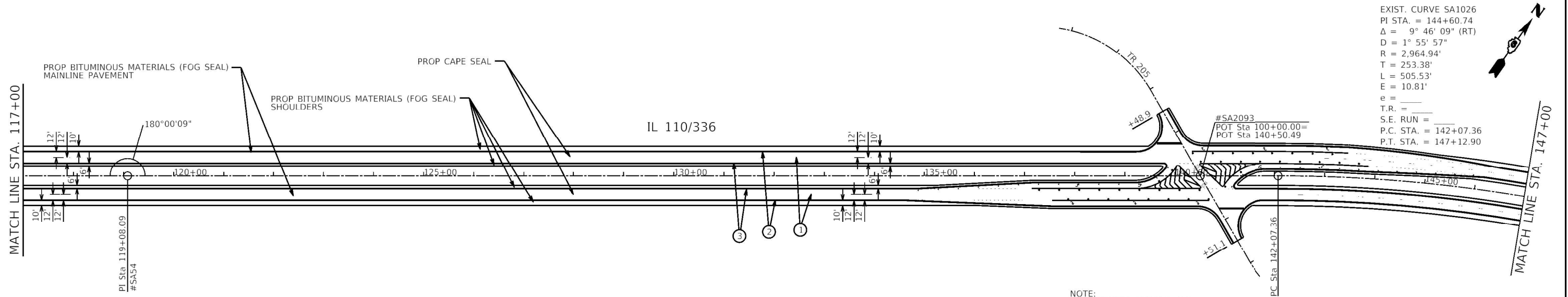
IL 110/336



LEGEND

- ① MODIFIED URETHANE PAVEMENT MARKING - LINE 5" (30' SKIP, 10' DASH) WHITE
- ② MODIFIED URETHANE PAVEMENT MARKING - LINE 5" (SOLID) WHITE
- ③ MODIFIED URETHANE PAVEMENT MARKING - LINE 5" (SOLID) YELLOW
- ④ MODIFIED URETHANE PAVEMENT MARKING - LINE 6" (6' SKIP, 2' DASH) WHITE
- ⑤ MODIFIED URETHANE PAVEMENT MARKING - LINE 6" (SOLID) WHITE
- ⑥ MODIFIED URETHANE PAVEMENT MARKING - LINE 8" (SOLID) WHITE
- ⑦ MODIFIED URETHANE PAVEMENT MARKING - LINE 12" (SOLID) WHITE
- ⑧ MODIFIED URETHANE PAVEMENT MARKING - LETTERS & SYMBOLS
- ▲ RAISED REFLECTIVE PAVEMENT MARKER, AMBER
- ◀ RAISED REFLECTIVE PAVEMENT MARKER, WHITE

EXIST. CURVE SA1026
 PI STA. = 144+60.74
 $\Delta = 9^\circ 46' 09''$ (RT)
 $D = 1^\circ 55' 57''$
 $R = 2,964.94'$
 $T = 253.38'$
 $L = 505.53'$
 $E = 10.81'$
 $e =$
 T.R. =
 S.E. RUN =
 P.C. STA. = 142+07.36
 P.T. STA. = 147+12.90



NOTE:
 FOR STRIPING DETAILS, SEE
 INTERSECTION DETAILS SHEETS

MODEL: Default
 FILE: Model - p:\w\l\dot\paw\berkeley.com\p\w\l\dot\Documents\DOT_Civil\as\Drawings - E\Projects\072719\110CAD\Data\CAD\sheet\072719.dwg
 PLOT DATE = 10/22/2021

| | | |
|------------------------------|------------|-----------|
| USER NAME = mindert | DESIGNED - | REVISED - |
| DRAWN - | REVISED - | |
| PLOT SCALE = 200.0000" / in. | CHECKED - | REVISED - |
| PLOT DATE = 10/22/2021 | DATE - | REVISED - |

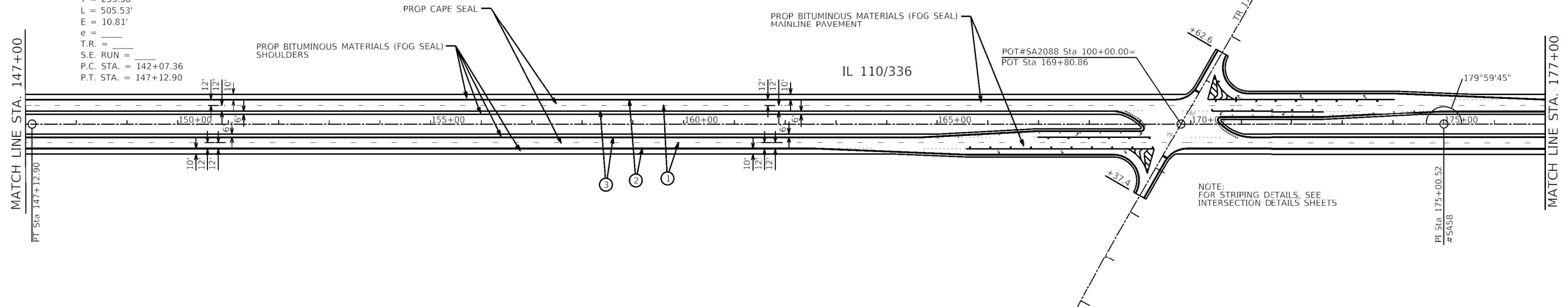
**STATE OF ILLINOIS
 DEPARTMENT OF TRANSPORTATION**

PLAN SHEETS

SCALE: 1" = 100' SHEET 3 OF 7 SHEETS STA. 87+00.00 TO STA. 147+00.00

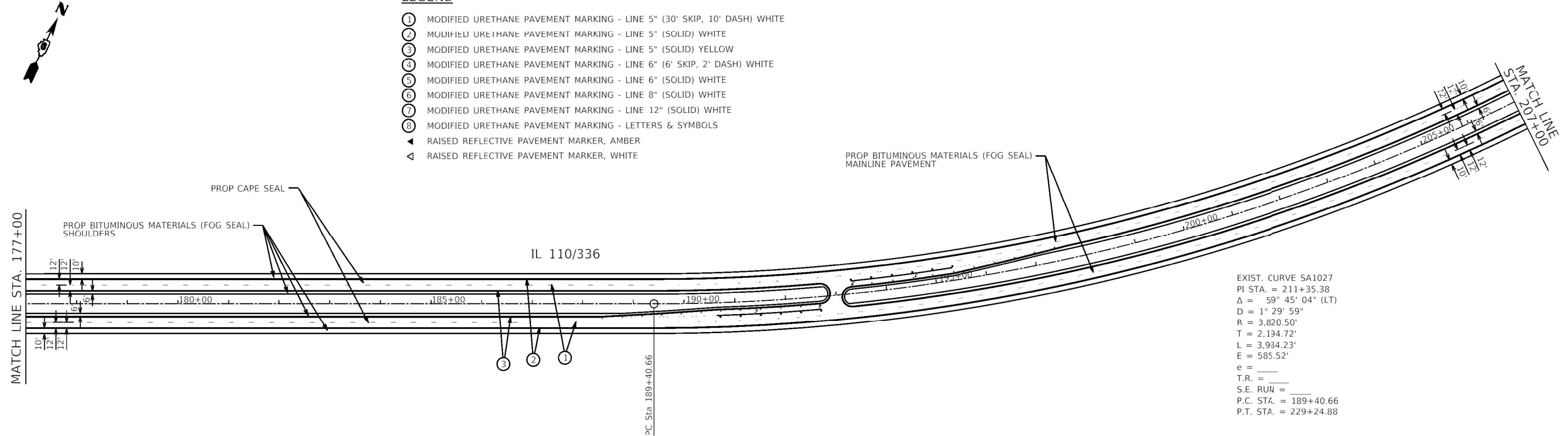
| F.A.P. RTE. | SECTION | COUNTY | TOTAL SHEETS | SHEET NO. |
|---------------------------|----------|--------|--------------|-----------|
| 302 | (1-7)Q-1 | ADAMS | 27 | 12 |
| CONTRACT NO. 72M19 | | | | |
| ILLINOIS FED. AID PROJECT | | | | |

EXIST. CURVE SA1026
 PI STA. = 144+60.74
 $\Delta = 9^\circ 46' 09''$ (RT)
 $D = 1^\circ 55' 57''$
 $R = 2,964.94'$
 $T = 253.38'$
 $L = 505.53'$
 $E = 10.81'$
 $e =$
 T.R. =
 S.E. RUN =
 P.C. STA. = 142+07.36
 P.T. STA. = 147+12.90



LEGEND

- ① MODIFIED URETHANE PAVEMENT MARKING - LINE 5" (30' SKIP, 10' DASH) WHITE
- ② MODIFIED URETHANE PAVEMENT MARKING - LINE 5" (SOLID) WHITE
- ③ MODIFIED URETHANE PAVEMENT MARKING - LINE 5" (SOLID) YELLOW
- ④ MODIFIED URETHANE PAVEMENT MARKING - LINE 6" (6' SKIP, 2' DASH) WHITE
- ⑤ MODIFIED URETHANE PAVEMENT MARKING - LINE 6" (SOLID) WHITE
- ⑥ MODIFIED URETHANE PAVEMENT MARKING - LINE 8" (SOLID) WHITE
- ⑦ MODIFIED URETHANE PAVEMENT MARKING - LINE 12" (SOLID) WHITE
- ⑧ MODIFIED URETHANE PAVEMENT MARKING - LETTERS & SYMBOLS
- ▲ RAISED REFLECTIVE PAVEMENT MARKER, AMBER
- ◁ RAISED REFLECTIVE PAVEMENT MARKER, WHITE



EXIST. CURVE SA1027
 PI STA. = 211+35.38
 $\Delta = 59^\circ 45' 04''$ (LT)
 $D = 1^\circ 29' 59''$
 $R = 3,820.50'$
 $T = 2,134.72'$
 $L = 3,934.23'$
 $E = 585.52'$
 $e =$
 T.R. =
 S.E. RUN =
 P.C. STA. = 189+40.66
 P.T. STA. = 229+24.88

NOTE:
 FOR STRIPING DETAILS, SEE
 INTERSECTION DETAILS SHEETS

MODEL: Default
 FILE: Model - pld.dwg
 PLOT DATE: 10/22/2021
 PROJECT: I:\Projects\72M19\CAD\Drawings\72M19_4.dwg

| | | |
|------------------------------|------------|-----------|
| USER NAME = mindert | DESIGNED - | REVISED - |
| | DRAWN - | REVISED - |
| PLOT SCALE = 200.0000' / in. | CHECKED - | REVISED - |
| PLOT DATE = 10/22/2021 | DATE - | REVISED - |

**STATE OF ILLINOIS
 DEPARTMENT OF TRANSPORTATION**

PLAN SHEETS

SCALE: 1" = 100' SHEET 4 OF 7 SHEETS STA. 207+00.00 TO STA. 267+00.00

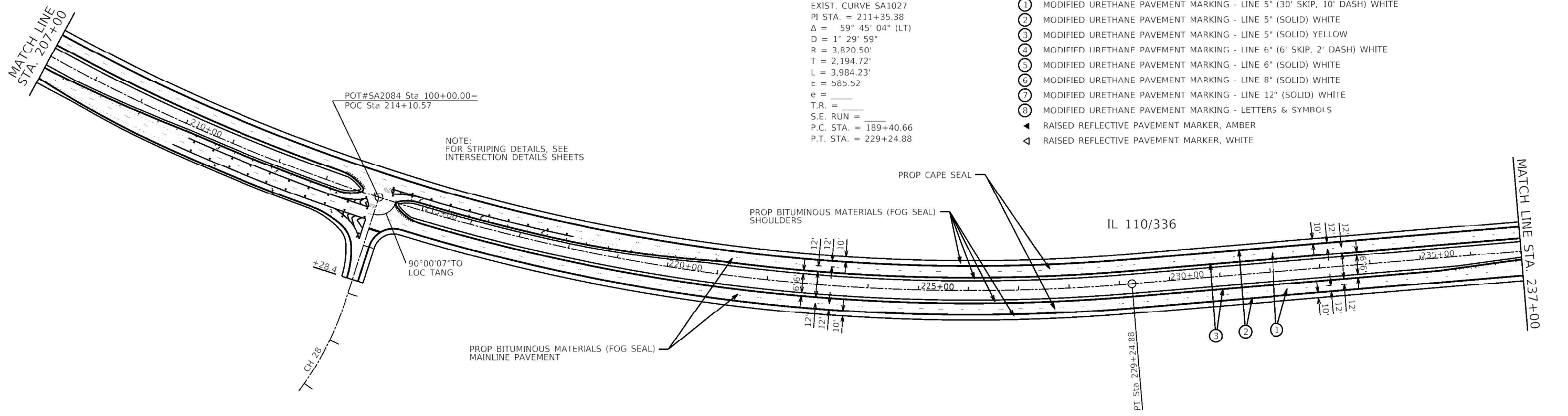
| F.A.P. RTE. | SECTION | COUNTY | TOTAL SHEETS | SHEET NO. |
|---------------------------|----------|--------|--------------|-----------|
| 302 | (1-7)Q-1 | ADAMS | 27 | 13 |
| CONTRACT NO. 72M19 | | | | |
| ILLINOIS FED. AID PROJECT | | | | |



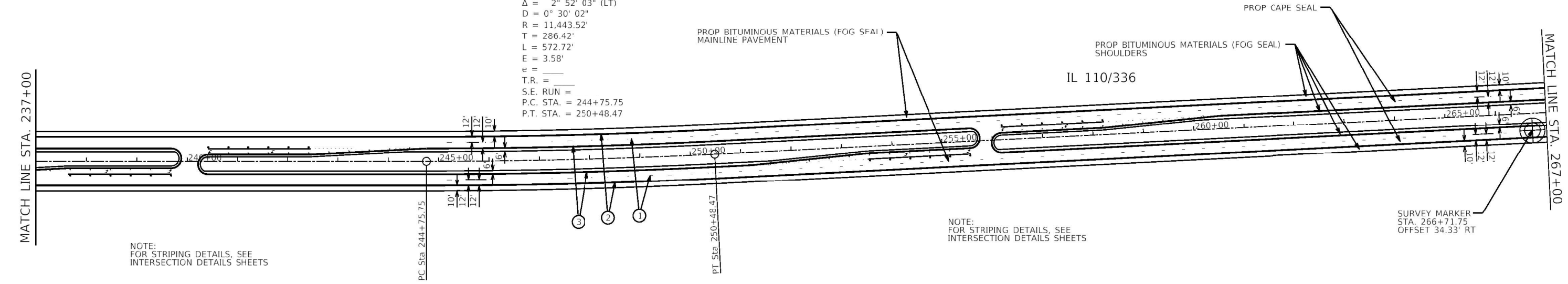
LEGEND

- ① MODIFIED URETHANE PAVEMENT MARKING - LINE 5" (30' SKIP, 10' DASH) WHITE
- ② MODIFIED URETHANE PAVEMENT MARKING - LINE 5" (SOLID) WHITE
- ③ MODIFIED URETHANE PAVEMENT MARKING - LINE 5" (SOLID) YELLOW
- ④ MODIFIED URETHANE PAVEMENT MARKING - LINE 6" (6' SKIP, 2' DASH) WHITE
- ⑤ MODIFIED URETHANE PAVEMENT MARKING - LINE 6" (SOLID) WHITE
- ⑥ MODIFIED URETHANE PAVEMENT MARKING - LINE 8" (SOLID) WHITE
- ⑦ MODIFIED URETHANE PAVEMENT MARKING - LINE 12" (SOLID) WHITE
- ⑧ MODIFIED URETHANE PAVEMENT MARKING - LETTERS & SYMBOLS
- ▲ RAISED REFLECTIVE PAVEMENT MARKER, AMBER
- ◀ RAISED REFLECTIVE PAVEMENT MARKER, WHITE

EXIST. CURVE SA1027
 PI STA. = 211+35.38
 $\Delta = 59^\circ 45' 04''$ (LT)
 $D = 1^\circ 29' 59''$
 $R = 3,870.50'$
 $T = 2,194.72'$
 $L = 3,984.23'$
 $e = 585.52'$
 $e = ______$
 T.R. = $______$
 S.E. RUN = $______$
 P.C. STA. = 189+40.66
 P.T. STA. = 229+24.88



EXIST. CURVE SA62
 PI STA. = 247+62.17
 $\Delta = 2^\circ 52' 03''$ (LT)
 $D = 0^\circ 30' 02''$
 $R = 11,443.52'$
 $T = 286.42'$
 $L = 572.72'$
 $E = 3.58'$
 $e = ______$
 T.R. = $______$
 S.E. RUN = $______$
 P.C. STA. = 244+75.75
 P.T. STA. = 250+48.47



NOTE:
 FOR STRIPING DETAILS, SEE
 INTERSECTION DETAILS SHEETS

NOTE:
 FOR STRIPING DETAILS, SEE
 INTERSECTION DETAILS SHEETS

MODEL - Default
 FILE - Model - p:\plottest\paw_bentley.com\PROJECTS\06727191\CADD\04\04\CAD\sheet\06727191.dgn

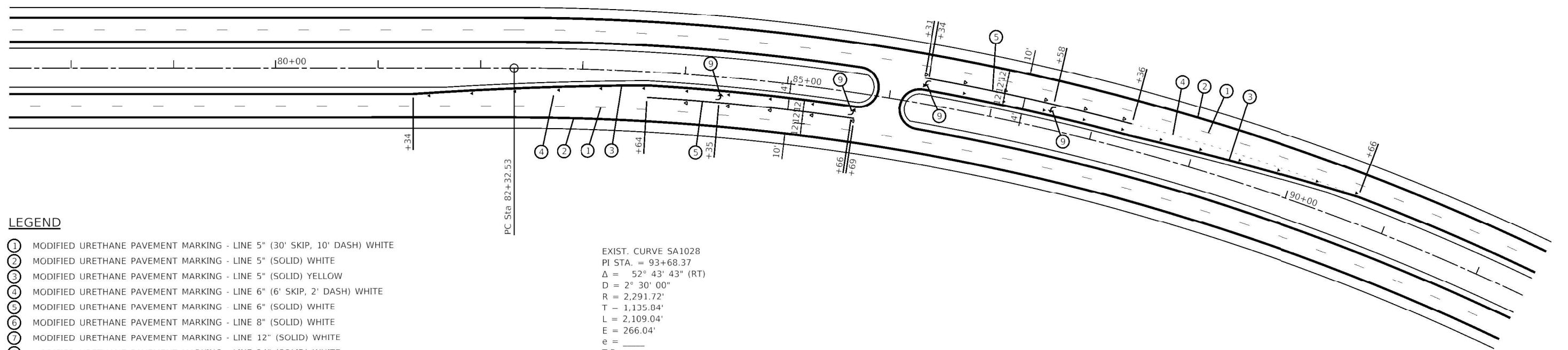
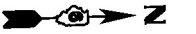
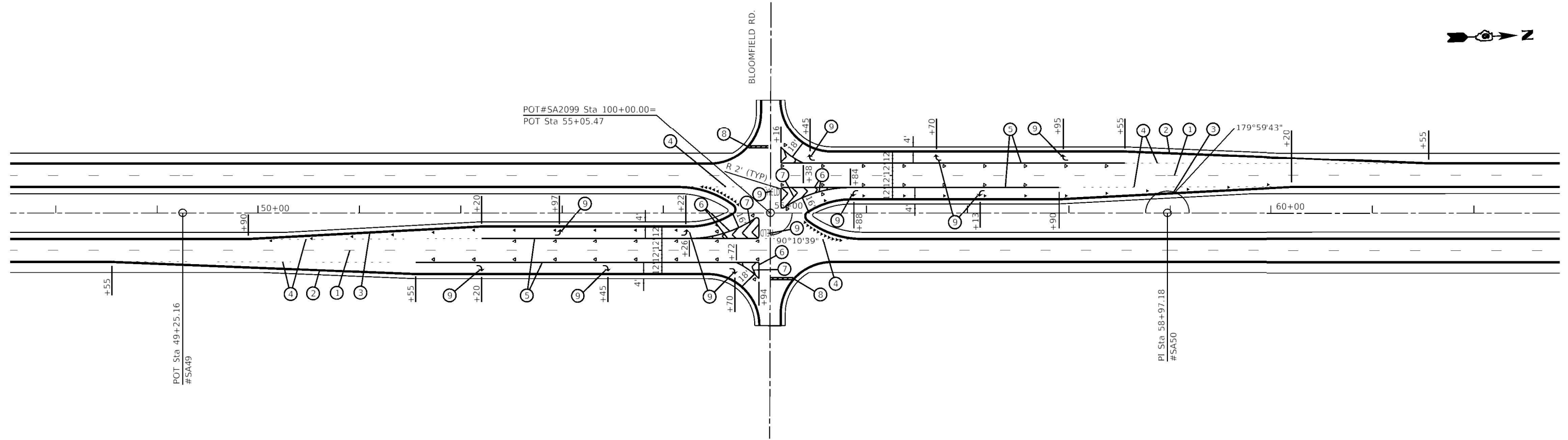
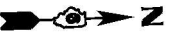
| | | |
|------------------------------|------------------|-----------------|
| USER NAME = mindert | DESIGNED - _____ | REVISED - _____ |
| PLOT SCALE = 200.0000" / in. | DRAWN - _____ | REVISED - _____ |
| PLOT DATE = 10/22/2021 | CHECKED - _____ | REVISED - _____ |
| | DATE - _____ | REVISED - _____ |

**STATE OF ILLINOIS
 DEPARTMENT OF TRANSPORTATION**

PLAN SHEETS

SCALE: 1" = 100' SHEET 5 OF 7 SHEETS STA. 207+00.00 TO STA. 267+00.00

| | | | | |
|---------------------------|------------------|--------------|-----------------|--------------|
| F.A.P. RTE. 302 | SECTION (1-7)Q-1 | COUNTY ADAMS | TOTAL SHEETS 27 | SHEET NO. 14 |
| CONTRACT NO. 72M19 | | | | |
| ILLINOIS FED. AID PROJECT | | | | |



LEGEND

- ① MODIFIED URETHANE PAVEMENT MARKING - LINE 5" (30' SKIP, 10' DASH) WHITE
- ② MODIFIED URETHANE PAVEMENT MARKING - LINE 5" (SOLID) WHITE
- ③ MODIFIED URETHANE PAVEMENT MARKING - LINE 5" (SOLID) YELLOW
- ④ MODIFIED URETHANE PAVEMENT MARKING - LINE 6" (6' SKIP, 2' DASH) WHITE
- ⑤ MODIFIED URETHANE PAVEMENT MARKING - LINE 6" (SOLID) WHITE
- ⑥ MODIFIED URETHANE PAVEMENT MARKING - LINE 8" (SOLID) WHITE
- ⑦ MODIFIED URETHANE PAVEMENT MARKING - LINE 12" (SOLID) WHITE
- ⑧ MODIFIED URETHANE PAVEMENT MARKING - LINE 24" (SOLID) WHITE
- ⑨ MODIFIED URETHANE PAVEMENT MARKING - LETTERS & SYMBOLS
- ▲ RAISED REFLECTIVE PAVEMENT MARKER, AMBER
- ◀ RAISED REFLECTIVE PAVEMENT MARKER, WHITE

EXIST. CURVE SA1028
 PI STA. = 93+68.37
 $\Delta = 52^\circ 43' 43"$ (RT)
 $D = 2^\circ 30' 00"$
 $R = 2,291.72'$
 $T = 1,135.04'$
 $L = 2,109.04'$
 $E = 266.04'$
 $e = \text{---}$
 $T.R. = \text{---}$
 $S.E. RUN = \text{---}$
 P.C. STA. = 82+32.53
 P.T. STA. = 103+41.58

MODEL - Default
 FILE - Model - pwwildcat.pwwildcat.dwg
 PROJECT - 10/22/2021
 USER - minderbt
 DATE - 10/22/2021

| | | |
|------------------------------|-------------------|-------------------|
| USER NAME = minderbt | DESIGNED - _____ | REVISED - _____ |
| DRAWN - _____ | REVISIONS - _____ | |
| PLOT SCALE = 100.0000" / in. | CHECKED - _____ | REVISIONS - _____ |
| PLOT DATE = 10/22/2021 | DATE - _____ | REVISIONS - _____ |

**STATE OF ILLINOIS
DEPARTMENT OF TRANSPORTATION**

INTERSECTION DETAILS

SCALE: 1" = 50' SHEET 1 OF 5 SHEETS STA. N/A TO STA. N/A

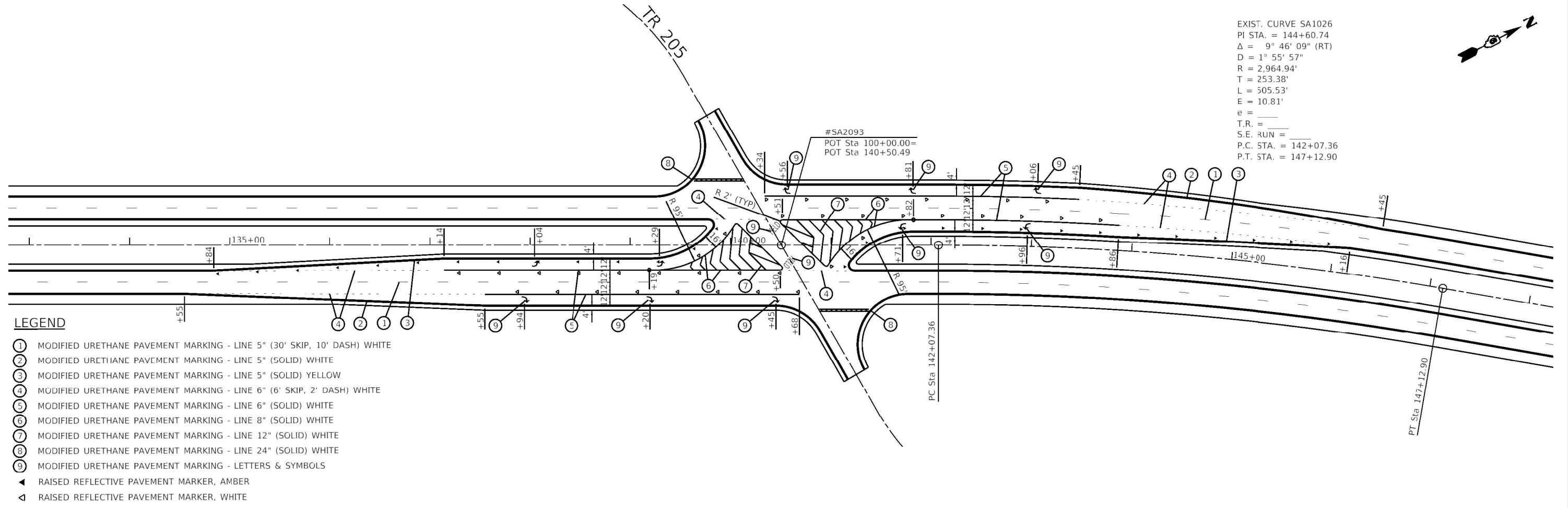
| F.A.P. RTE. | SECTION | COUNTY | TOTAL SHEETS | SHEET NO. |
|---------------------------|----------|--------|--------------|-----------|
| 302 | (1-7)Q-1 | ADAMS | 27 | 17 |
| CONTRACT NO. 72M19 | | | | |
| ILLINOIS FED. AID PROJECT | | | | |

EXIST. CURVE SA1026
 PI STA. = 144+60.74
 $\Delta = 9^{\circ} 46' 09''$ (RT)
 $D = 1^{\circ} 55' 57''$
 $R = 2,964.94'$
 $T = 253.38'$
 $L = 305.53'$
 $E = 10.81'$
 $e =$
 $T.R. =$
 $S.E. RUN =$
 $P.C. STA. = 142+07.36$
 $P.T. STA. = 147+12.90$

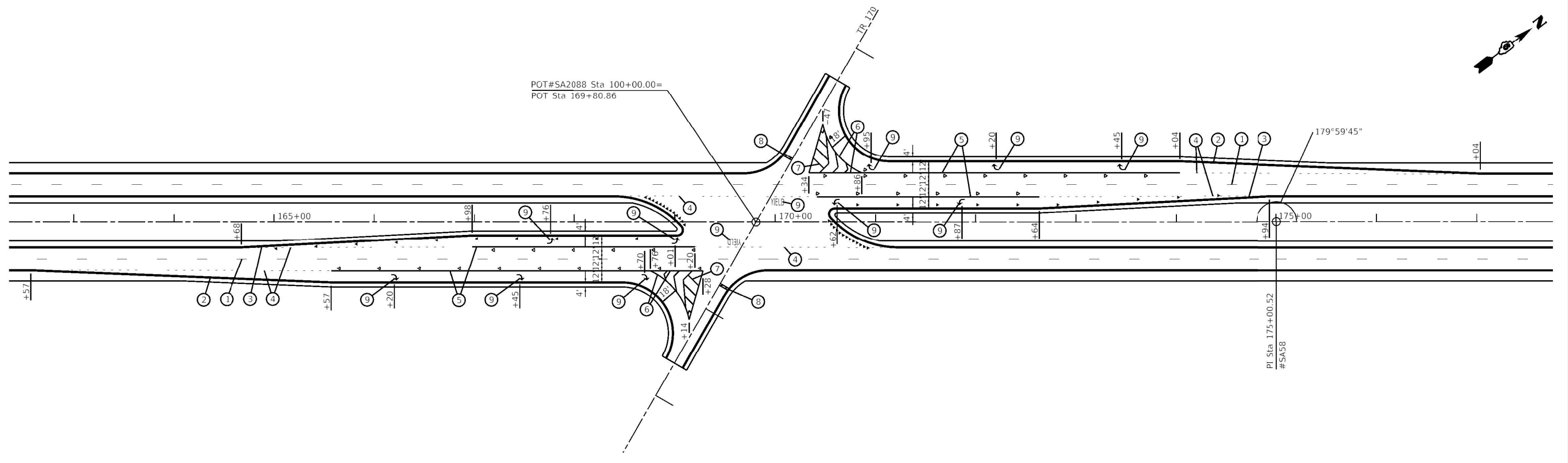


LEGEND

- ① MODIFIED URETHANE PAVEMENT MARKING - LINE 5" (30' SKIP, 10' DASH) WHITE
- ② MODIFIED URETHANE PAVEMENT MARKING - LINE 5" (SOLID) WHITE
- ③ MODIFIED URETHANE PAVEMENT MARKING - LINE 5" (SOLID) YELLOW
- ④ MODIFIED URETHANE PAVEMENT MARKING - LINE 6" (6' SKIP, 2' DASH) WHITE
- ⑤ MODIFIED URETHANE PAVEMENT MARKING - LINE 6" (SOLID) WHITE
- ⑥ MODIFIED URETHANE PAVEMENT MARKING - LINE 8" (SOLID) WHITE
- ⑦ MODIFIED URETHANE PAVEMENT MARKING - LINE 12" (SOLID) WHITE
- ⑧ MODIFIED URETHANE PAVEMENT MARKING - LINE 24" (SOLID) WHITE
- ⑨ MODIFIED URETHANE PAVEMENT MARKING - LETTERS & SYMBOLS
- ▲ RAISED REFLECTIVE PAVEMENT MARKER, AMBER
- ◀ RAISED REFLECTIVE PAVEMENT MARKER, WHITE



POT#SA2088 Sta 100+00.00=
 POT Sta 169+80.86



MODEL: Default
 FILE: Model - pav.mxd
 I:\Projects\72M19\CADD\Drawings\CADD\Sheet\0672M19_dht_intersec.dgn

| | | |
|------------------------------|-------------------|-------------------|
| USER NAME = mindert | DESIGNED - _____ | REVISED - _____ |
| DRAWN - _____ | REVISIONS - _____ | REVISIONS - _____ |
| PLOT SCALE = 100.0000' / in. | CHECKED - _____ | REVISIONS - _____ |
| PLOT DATE = 10/22/2021 | DATE - _____ | REVISIONS - _____ |

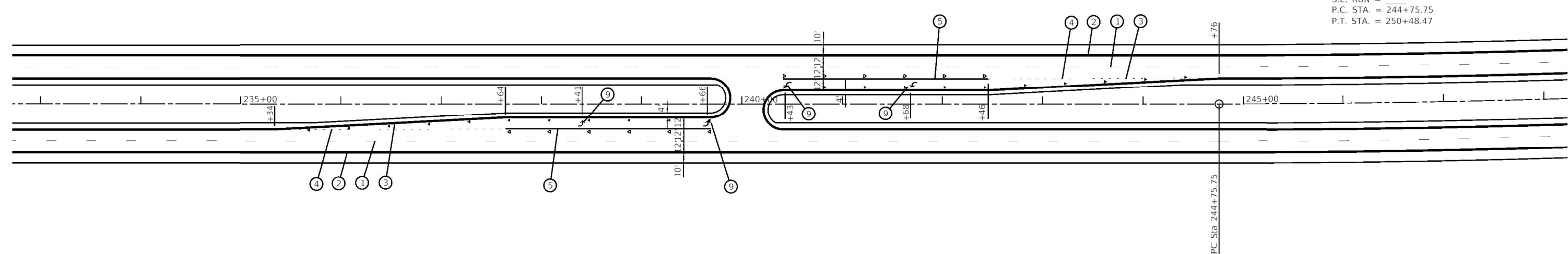
**STATE OF ILLINOIS
 DEPARTMENT OF TRANSPORTATION**

INTERSECTION DETAILS

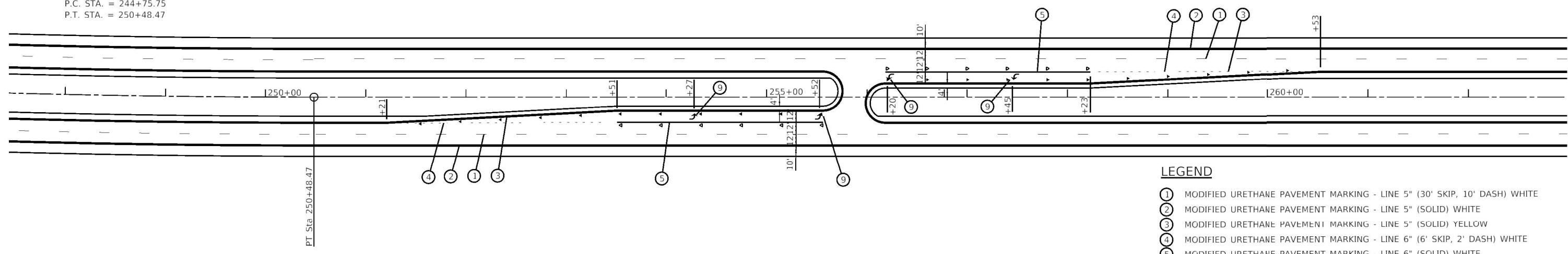
SCALE: 1" = 50' SHEET 2 OF 5 SHEETS STA. N/A TO STA. N/A

| F.A.P. RTE. | SECTION | COUNTY | TOTAL SHEETS | SHEET NO. |
|---------------------------|----------|--------|--------------|-----------|
| 302 | (1-7)Q-1 | ADAMS | 27 | 18 |
| CONTRACT NO. 72M19 | | | | |
| ILLINOIS FED. AID PROJECT | | | | |

EXIST. CURVE SA62
 PI STA. = 247+62.17
 $\Delta = 2^\circ 52' 03''$ (LT)
 $D = 0^\circ 30' 02''$
 $R = 11,443.52'$
 $T = 286.42'$
 $L = 572.72'$
 $E = 3.58'$
 $e =$
 T.R. =
 S.E. RUN =
 P.C. STA. = 244+75.75
 P.T. STA. = 250+48.47



EXIST. CURVE SA62
 PI STA. = 247+62.17
 $\Delta = 2^\circ 52' 03''$ (LT)
 $D = 0^\circ 30' 02''$
 $R = 11,443.52'$
 $T = 286.42'$
 $L = 572.72'$
 $E = 3.58'$
 $e =$
 T.R. =
 S.E. RUN =
 P.C. STA. = 244+75.75
 P.T. STA. = 250+48.47



LEGEND

- ① MODIFIED URETHANE PAVEMENT MARKING - LINE 5" (30' SKIP, 10' DASH) WHITE
- ② MODIFIED URETHANE PAVEMENT MARKING - LINE 5" (SOLID) WHITE
- ③ MODIFIED URETHANE PAVEMENT MARKING - LINE 5" (SOLID) YELLOW
- ④ MODIFIED URETHANE PAVEMENT MARKING - LINE 6" (6' SKIP, 2' DASH) WHITE
- ⑤ MODIFIED URETHANE PAVEMENT MARKING - LINE 6" (SOLID) WHITE
- ⑥ MODIFIED URETHANE PAVEMENT MARKING - LINE 8" (SOLID) WHITE
- ⑦ MODIFIED URETHANE PAVEMENT MARKING - LINE 12" (SOLID) WHITE
- ⑧ MODIFIED URETHANE PAVEMENT MARKING - LINE 24" (SOLID) WHITE
- ⑨ MODIFIED URETHANE PAVEMENT MARKING - LETTERS & SYMBOLS
- ▲ RAISED REFLECTIVE PAVEMENT MARKER, AMBER
- ◁ RAISED REFLECTIVE PAVEMENT MARKER, WHITE

MODEL: Default
 FILE: Model - pwwildcat.pwwildcat.com.PWIDOTDocuments\DOT_Offices\District_6\Projects\0672719\CADD\Basis\CAD\Sheet\0672719_dht_intersec.dgn

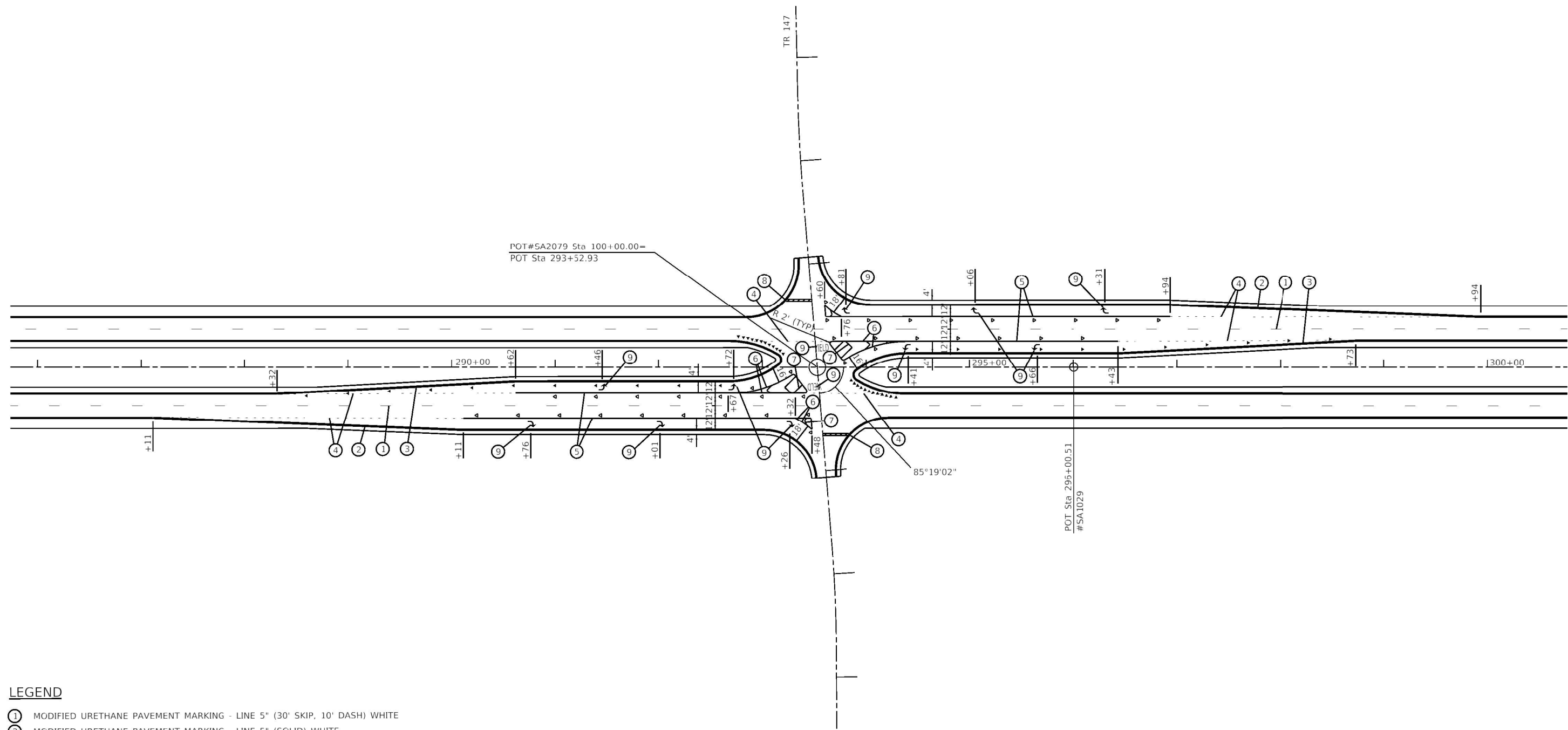
| | | |
|------------------------------|-------------------|-------------------|
| USER NAME = mindrbt | DESIGNED - _____ | REVISED - _____ |
| DRAWN - _____ | REVISIONS - _____ | REVISIONS - _____ |
| PLOT SCALE = 100.0000" / in. | CHECKED - _____ | REVISIONS - _____ |
| PLOT DATE = 10/22/2021 | DATE - _____ | REVISIONS - _____ |

**STATE OF ILLINOIS
 DEPARTMENT OF TRANSPORTATION**

INTERSECTION DETAILS

SCALE: 1" = 50' SHEET 4 OF 5 SHEETS STA. N/A TO STA. N/A

| | | | | |
|---------------------------|------------------|--------------|-----------------|--------------|
| F.A.P. RTE. 302 | SECTION (1-7)Q-1 | COUNTY ADAMS | TOTAL SHEETS 27 | SHEET NO. 20 |
| CONTRACT NO. 72M19 | | | | |
| ILLINOIS FED. AID PROJECT | | | | |



LEGEND

- ① MODIFIED URETHANE PAVEMENT MARKING - LINE 5" (30' SKIP, 10' DASH) WHITE
- ② MODIFIED URETHANE PAVEMENT MARKING - LINE 5" (SOLID) WHITE
- ③ MODIFIED URETHANE PAVEMENT MARKING - LINE 5" (SOLID) YELLOW
- ④ MODIFIED URETHANE PAVEMENT MARKING - LINE 6" (6' SKIP, 2' DASH) WHITE
- ⑤ MODIFIED URETHANE PAVEMENT MARKING - LINE 6" (SOLID) WHITE
- ⑥ MODIFIED URETHANE PAVEMENT MARKING - LINE 8" (SOLID) WHITE
- ⑦ MODIFIED URETHANE PAVEMENT MARKING - LINE 12" (SOLID) WHITE
- ⑧ MODIFIED URETHANE PAVEMENT MARKING - LINE 24" (SOLID) WHITE
- ⑨ MODIFIED URETHANE PAVEMENT MARKING - LETTERS & SYMBOLS
- ▲ RAISED REFLECTIVE PAVEMENT MARKER, AMBER
- △ RAISED REFLECTIVE PAVEMENT MARKER, WHITE

MODEL - Default
 FILE - Model - p:\w\dot\paw\berkeley.com\PHWDOT\Documents\DOT - Offices\District - 6\Projects\06727M19\CADD\Data\CAD\sheet\06727M19.dwg, intersheet.dgn

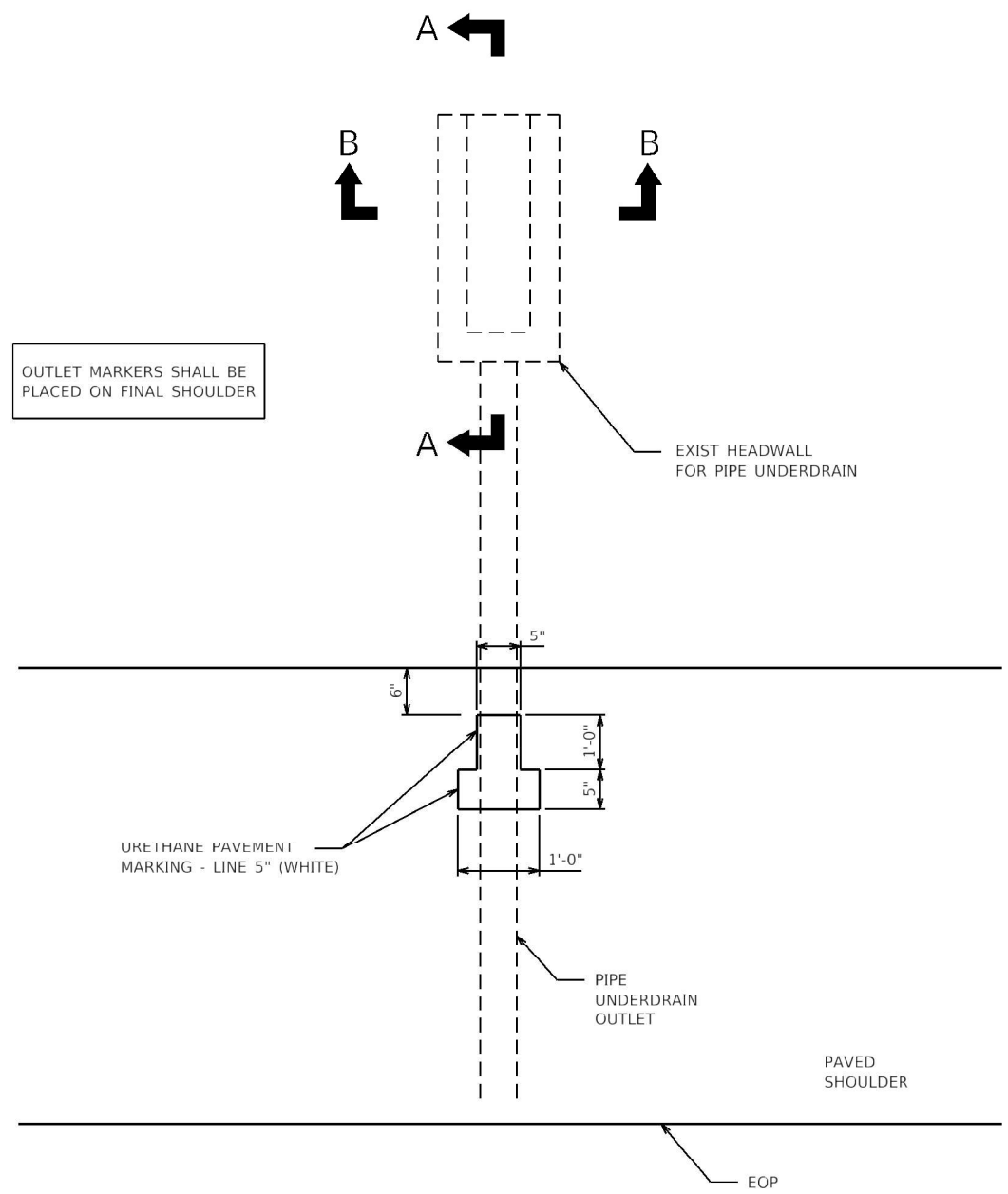
| | | |
|------------------------------|------------------|-----------------|
| USER NAME = mindert | DESIGNED - _____ | REVISED - _____ |
| | DRAWN - _____ | REVISED - _____ |
| PLOT SCALE = 100.0000' / in. | CHECKED - _____ | REVISED - _____ |
| PLOT DATE = 10/22/2021 | DATE - _____ | REVISED - _____ |

**STATE OF ILLINOIS
DEPARTMENT OF TRANSPORTATION**

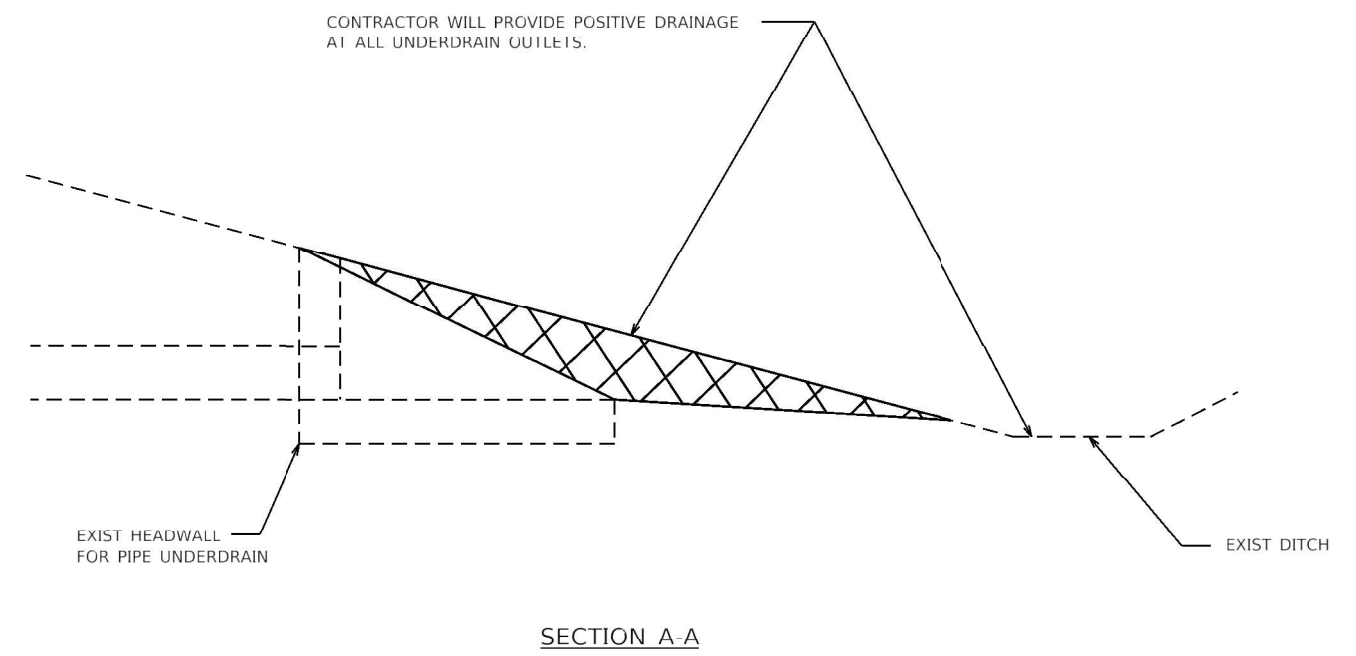
INTERSECTION DETAILS

SCALE: 1" = 50' SHEET 5 OF 5 SHEETS STA. N/A TO STA. N/A

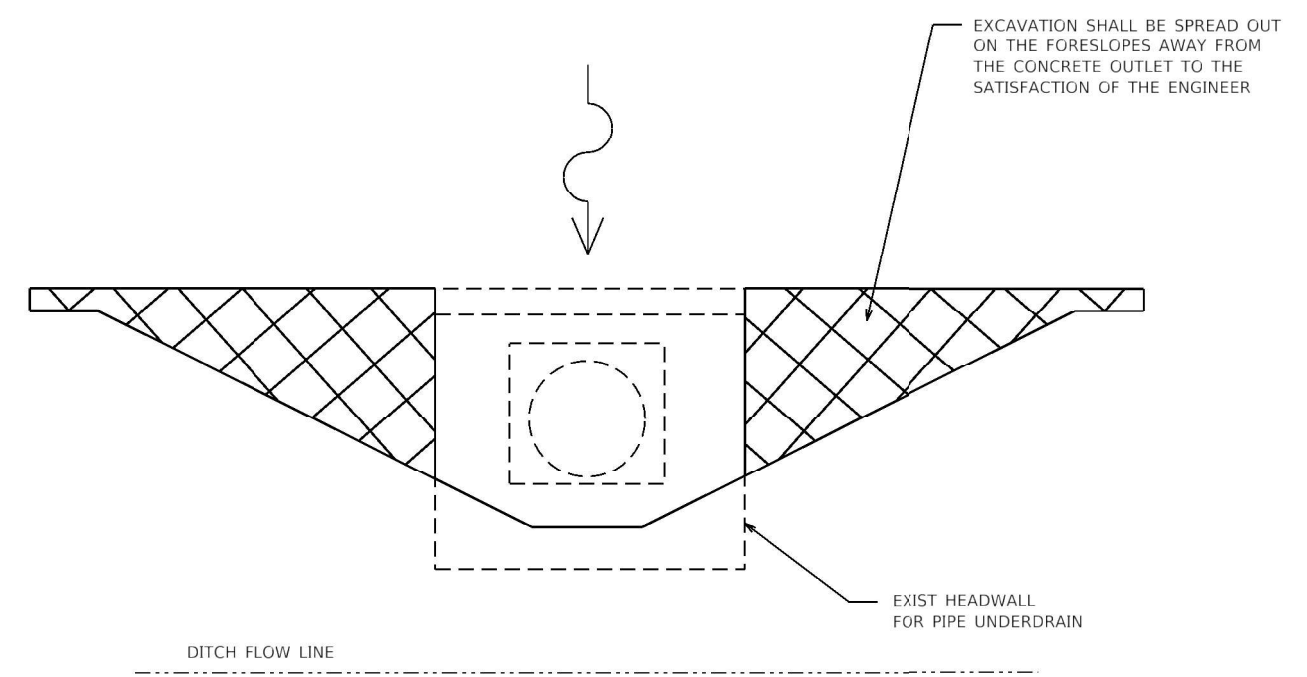
| F.A.P. RTE. | SECTION | COUNTY | TOTAL SHEETS | SHEET NO. |
|---------------------------|----------|--------|--------------|-----------|
| 302 | (1-7)Q-1 | ADAMS | 27 | 22 |
| CONTRACT NO. 72M19 | | | | |
| ILLINOIS FED. AID PROJECT | | | | |



TYPICAL PIPE UNDERDRAIN MARKER DETAIL



SECTION A-A



SECTION B-B

Model: Default
 File: Model - pwwdtdocuments\DOT - Office\District - @Project\072719\CADD\DATA\CAD\sheet\072719.dwg

| | | |
|----------------------------|-------------------|-------------------|
| USER NAME = mindrbt | DESIGNED - _____ | REVISED - _____ |
| DRAWN - _____ | REVISIONS - _____ | REVISIONS - _____ |
| PLOT SCALE = 20.0000' / 1" | CHECKED - _____ | REVISIONS - _____ |
| PLOT DATE = 10/22/2021 | DATE - _____ | REVISIONS - _____ |

STATE OF ILLINOIS
DEPARTMENT OF TRANSPORTATION

| | | | |
|----------------------|---------------------|----------|-------------|
| OUTLET MARKER DETAIL | | | |
| SCALE: N/A | SHEET 1 OF 6 SHEETS | STA. N/A | TO STA. N/A |

| | | | | |
|---------------------------|------------------|--------------|-----------------|--------------|
| F.A.P. RTE. 302 | SECTION (1-7)Q-1 | COUNTY ADAMS | TOTAL SHEETS 27 | SHEET NO. 22 |
| CONTRACT NO. 72M19 | | | | |
| ILLINOIS FED. AID PROJECT | | | | |

SCHEDULE OF QUANTITIES

| | | | | |
|----------------------|------------------|------------------|-------|------|
| S.L. NO. | SECTION | COUNT | TOTAL | UNIT |
| 302 | 1-7 (X-1, L, SG) | ADAMS | | 23 |
| P.L. NO. (SHEET NO.) | SHEET | P.L. NO. PROJECT | | |

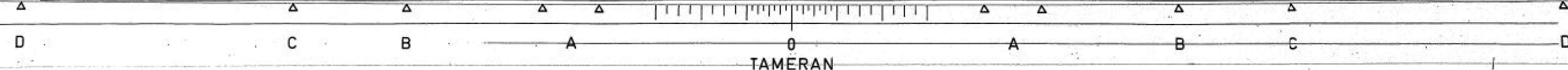
| LOCATION F. A. P. 302 N. B. | PIPE UNDERDRAINS 4" LIN. FT. | PIPE UNDERDRAINS 4" (SPECIAL) LIN. FT. | CONCRETE HEADWALL FOR PIPE DRAIN EACH | LOCATION F. A. P. 302 N. B. | PIPE UNDERDRAINS 4" LIN. FT. | PIPE UNDERDRAINS 4" (SPECIAL) LIN. FT. | CONCRETE HEADWALL FOR PIPE DRAIN EACH | LOCATION F. A. P. 302 N. B. | PIPE UNDERDRAINS 4" LIN. FT. | PIPE UNDERDRAINS 4" (SPECIAL) LIN. FT. | CONCRETE HEADWALL FOR PIPE DRAIN EACH |
|---|------------------------------------|--|--|---|------------------------------------|--|--|---|------------------------------------|--|--|
| 1+35 - 4+21 MEDIAN OUTLET - 1+35 SUMMIT - 4+21 | 286 | 15 | 1 | 73+50 - 77+50 OUTSIDE OUTLET - 77+50 | 400 | 20 | 1 | 146+25 - 151+00 MEDIAN OUTLET - 146+25 | 475 | 16 | 1 |
| 1+28 - 4+21 OUTSIDE OUTLET - 1+28 SUMMIT - 4+21 | 293 | 18 | 1 | 77+50 - 82+00 MEDIAN OUTLET - 82+00 | 450 | 11 | 1 | 146+25 - 151+00 OUTSIDE OUTLET - 146+25 | 475 | 20 | 1 |
| 4+21 - 9+00 MEDIAN OUTLET - 9+00 | 479 | 16 | 1 | 77+50 - 82+00 OUTSIDE OUTLET - 82+00 | 450 | 20 | 1 | 151+00 - 155+50 MEDIAN OUTLET - 151+00 | 450 | 16 | 1 |
| 4+21 - 9+00 OUTSIDE OUTLET - 9+00 | 479 | 20 | 1 | 82+00 - 85+54 MEDIAN OUTLET - 85+54 | 354 | OUTLET TO CULVERT | | 151+00 - 155+50 OUTSIDE OUTLET - 151+00 | 450 | 20 | 1 |
| 9+00 - 14+00 MEDIAN OUTLET - 14+00 | 500 | 16 | 1 | 82+00 - 87+00 OUTSIDE OUTLET - 87+00 | 500 | 20 | 1 | 155+50 - 160+50 MEDIAN OUTLET - 155+50 | 500 | 16 | 1 |
| 9+00 - 14+00 OUTSIDE OUTLET - 14+00 | 500 | 20 | 1 | 86+31 - 91+00 MEDIAN OUTLET - 91+00 | 469 | 16 | 1 | 155+50 - 160+50 OUTSIDE OUTLET - 155+50 | 500 | 20 | 1 |
| 14+00 - 18+95 MEDIAN OUTLET - 18+95 | 495 | OUTLET TO CULVERT | | 87+00 - 91+00 OUTSIDE OUTLET - 91+00 | 400 | 20 | 1 | 160+50 - 165+50 MEDIAN OUTLET - 160+50 | 500 | 16 | 1 |
| 14+00 - 18+95 OUTSIDE OUTLET - 18+95 | 495 | OUTLET TO CULVERT | | 91+00 - 96+00 MEDIAN OUTLET - 96+00 | 500 | 16 | 1 | 160+50 - 165+50 OUTSIDE OUTLET - 160+50 | 500 | 20 | 1 |
| 18+95 - 23+50 MEDIAN OUTLET - 23+50 | 455 | 16 | 1 | 91+00 - 96+00 OUTSIDE OUTLET - 96+00 | 500 | 20 | 1 | 165+50 - 169+00 MEDIAN OUTLET - 165+50 SUMMIT - 169+00 | 350 | 11 | 1 |
| 23+50 - 28+45 MEDIAN OUTLET - 28+45 | 495 | 16 | 1 | 96+00 - 101+00 MEDIAN OUTLET - 101+00 | 500 | 16 | 1 | 165+50 - 168+47 OUTSIDE OUTLET - 165+50 SUMMIT - 168+47 | 297 | 15 | 1 |
| 28+45 - 32+00 MEDIAN OUTLET - 28+45 | 355 | 16 | 1 | 96+00 - 101+00 OUTSIDE OUTLET - 101+00 | 500 | 20 | 1 | * OUTLET - 172+50 MEDIAN * OUTLET - 171+22 | 16 | 1 | 1 |
| 28+45 - 32+00 OUTSIDE OUTLET - 28+45 | 355 | 20 | 1 | 101+00 - 105+89 MEDIAN OUTLET - 105+89 | 489 | OUTLET TO SHOULDER INLET | | * OUTLET - 172+50 OUTSIDE * OUTLET - 170+30 | 20 | 1 | 1 |
| 32+00 - 36+00 MEDIAN OUTLET - 32+00 | 400 | 16 | 1 | 101+00 - 105+89 OUTSIDE OUTLET - 105+89 | 489 | OUTLET TO SHOULDER INLET | | * OUTLET - 177+50 MEDIAN * OUTLET - 175+00 | 16 | 1 | 1 |
| 32+00 - 36+00 OUTSIDE OUTLET - 32+00 | 400 | 20 | 1 | 108+89 - 110+07 MEDIAN OUTLET - 110+07 | 118 | 16 | 1 | * OUTLET - 177+50 OUTSIDE * OUTLET - 175+00 | 20 | 1 | 1 |
| 36+00 - 40+00 MEDIAN OUTLET - 36+00 | 400 | 16 | 1 | 108+89 - 110+07 OUTSIDE OUTLET - 110+07 | 118 | OUTLET TO SHOULDER INLET | | * OUTLET - 182+50 MEDIAN * OUTLET - 180+00 | 16 | 1 | 1 |
| 36+00 - 40+00 OUTSIDE OUTLET - 36+00 | 400 | 20 | 1 | 110+07 - 113+00 MEDIAN OUTLET - 110+07 | 293 | 16 | 1 | * OUTLET - 182+50 OUTSIDE * OUTLET - 180+00 | 20 | 1 | 1 |
| 40+00 - 45+00 MEDIAN OUTLET - 40+00 | 500 | 16 | 1 | 110+07 - 112+20 OUTSIDE OUTLET - 110+07 | 213 | OUTLET TO SHOULDER INLET | | * OUTLET - 187+50 MEDIAN * OUTLET - 185+00 | 16 | 1 | 1 |
| 40+00 - 45+00 OUTSIDE OUTLET - 40+00 | 500 | 20 | 1 | 113+00 - 118+00 MEDIAN OUTLET - 113+00 | 500 | 16 | 1 | * OUTLET - 187+50 OUTSIDE * OUTLET - 185+00 | 20 | 1 | 1 |
| 45+00 - 50+00 MEDIAN OUTLET - 45+00 | 500 | 16 | 1 | 112+20 - 114+36 OUTSIDE OUTLET - 112+20 | 216 | OUTLET TO SHOULDER INLET | | 190+00 - 192+69 MEDIAN OUTLET - 190+00 SUMMIT - 192+69 | 269 | 11 | 1 |
| 45+00 - 50+00 OUTSIDE OUTLET - 45+00 | 500 | 20 | 1 | 114+36 - 118+00 OUTSIDE OUTLET - 114+36 | 364 | OUTLET TO SHOULDER INLET | | 190+00 - 193+31 OUTSIDE OUTLET - 190+00 | 331 | 20 | 1 |
| 50+00 - 54+25 MEDIAN OUTLET - 50+00 SUMMIT - 54+25 | 425 | 16 | 1 | 118+00 - 123+00 MEDIAN OUTLET - 118+00 | 500 | 16 | 1 | 193+31 - 196+00 MEDIAN OUTLET - 193+31 SUMMIT - 196+00 | 269 | 16 | 1 |
| 50+00 - 54+45 OUTSIDE OUTLET - 50+00 SUMMIT - 54+45 | 445 | 15 | 1 | 118+00 - 123+00 OUTSIDE OUTLET - 118+00 | 500 | 20 | 1 | 193+31 - 196+00 OUTSIDE OUTLET - 193+31 SUMMIT - 196+00 | 269 | 20 | 1 |
| 55+96 - 60+50 MEDIAN OUTLET - 55+96 | 454 | 16 | 1 | 123+00 - 128+00 MEDIAN OUTLET - 123+00 | 500 | 20 | 1 | 196+00 - 199+00 MEDIAN OUTLET - 199+00 | 300 | 16 | 1 |
| 55+65 - 60+50 OUTSIDE OUTLET - 55+65 | 485 | 20 | 1 | 123+00 - 128+00 OUTSIDE OUTLET - 123+00 | 500 | 16 | 1 | 196+00 - 199+00 OUTSIDE OUTLET - 199+00 | 300 | 20 | 1 |
| 60+50 - 65+00 MEDIAN OUTLET - 60+50 | 450 | 16 | 1 | 128+00 - 133+00 MEDIAN OUTLET - 128+00 | 500 | 20 | 1 | 199+00 - 203+00 MEDIAN OUTLET - 203+00 | 400 | 16 | 1 |
| 60+50 - 65+00 OUTSIDE OUTLET - 60+50 | 450 | 20 | 1 | 128+00 - 133+00 OUTSIDE OUTLET - 128+00 | 500 | 16 | 1 | 199+00 - 203+00 OUTSIDE OUTLET - 203+00 | 400 | 20 | 1 |
| 65+00 - 69+00 MEDIAN OUTLET - 65+00 SUMMIT - 69+00 | 400 | 16 | 1 | 133+00 - 138+00 MEDIAN OUTLET - 133+00 | 500 | 20 | 1 | * SEE ROCK DRAIN DETAIL SHEET No. 9 | | | |
| 65+00 - 69+00 OUTSIDE OUTLET - 65+00 SUMMIT - 69+00 | 400 | 20 | 1 | 133+00 - 138+00 OUTSIDE OUTLET - 133+00 | 500 | 16 | 1 | | | | |
| 69+00 - 73+50 MEDIAN OUTLET - 73+50 | 450 | 16 | 1 | 138+00 - 139+19 MEDIAN OUTLET - 138+00 SUMMIT - 139+19 | 119 | 11 | 1 | | | | |
| 69+00 - 73+50 OUTSIDE OUTLET - 73+50 | 450 | 20 | 1 | 138+00 - 140+45 OUTSIDE OUTLET - 138+00 SUMMIT - 140+45 | 245 | 15 | 1 | | | | |
| 73+50 - 77+50 MEDIAN OUTLET - 77+50 | 400 | 16 | 1 | 141+81 - 146+25 MEDIAN OUTLET - 141+81 | 444 | 16 | 1 | | | | |
| | | | | 141+76 - 146+25 OUTSIDE OUTLET - 141+76 | 449 | 20 | 1 | | | | |

| | | | |
|----------|----|------|--------|
| DESIGNED | BY | DATE | 3/1/95 |
| DRAWN | BY | DATE | 3/1/95 |
| CHECKED | BY | DATE | 3/1/95 |
| REVIEWED | BY | DATE | 3/1/95 |

SCHEDULE OF QUANTITIES
F. A. P. ROUTE 302
SECTION 1-7 (X-1, L, SG)
ADAMS COUNTY

P.L. NO. 8952056A

DATE MARCH 1995



FOR INFORMATIONAL PURPOSES. THE LOCATIONS PROVIDED ARE BASED ON THE ORIGINAL CONSTRUCTION PLANS AND SHOULD BE VERIFIED IN THE FIELD.

| | | | | | | | | | |
|----------------------------|------------------|-----------------|---|---------------------------|--------------------|------------------|--------------|-----------------|---------------------------|
| USER NAME = mindert | DESIGNED - _____ | REVISED - _____ | STATE OF ILLINOIS DEPARTMENT OF TRANSPORTATION | UNDERDRAIN DETAILS | F.A.P. RTE. 302 | SECTION (1-7)Q-1 | COUNTY ADAMS | TOTAL SHEETS 27 | SHEET NO. 23 |
| PLOT SCALE = 20.0000' / 1" | CHECKED - _____ | REVISED - _____ | | | CONTRACT NO. 72M19 | | | | |
| PLOT DATE = 10/22/2021 | DATE - _____ | REVISED - _____ | | SCALE: N/A | SHEET 2 | OF 6 SHEETS | STA. N/A | TO STA. N/A | ILLINOIS FED. AID PROJECT |

MODEL: Defaul
FILE: \\ms01c:\pw\berkeley.com\PROJECTS\72M19\CADD\DATA\CAD\sheet\0672M19.dwg
PROJECT: 72M19
DATE: 10/22/2021

SCHEDULE OF QUANTITIES

| | | | | |
|-----------------------|------------------|------------------|--------------|-----------|
| F.A. RT. | SECTION | COUNTY | TOTAL SHEETS | SHEET NO. |
| 302 | 1-7 (X-1, L, SG) | ADAMS | 27 | 24 |
| FED. ROAD DIST. NO. 7 | SCALE | FED. AID PROJECT | | |

| LOCATION | PIPE UNDERDRAINS 4" LIN. FT. | PIPE UNDERDRAINS 4" (SPECIAL) LIN. FT. | CONCRETE HEADWALL FOR PIPE DRAIN EACH | LOCATION | PIPE UNDERDRAINS 4" LIN. FT. | PIPE UNDERDRAINS 4" (SPECIAL) LIN. FT. | CONCRETE HEADWALL FOR PIPE DRAIN EACH | LOCATION | PIPE UNDERDRAINS 4" LIN. FT. | PIPE UNDERDRAINS 4" (SPECIAL) LIN. FT. | CONCRETE HEADWALL FOR PIPE DRAIN EACH |
|---|------------------------------|--|---------------------------------------|---|------------------------------|--|---------------------------------------|---|------------------------------|--|---------------------------------------|
| F. A. P. 302 S. B. | | | | F. A. P. 302 S. B. | | | | F. A. P. 302 S. B. | | | |
| 1+50 - 4+21 MEDIAN OUTLET - 1+50 SUMMIT - 4+21 | 271 | | 1 | 69+00 - 73+50 OUTSIDE OUTLET - 73+50 | 450 | 20 | 1 | 141+81 - 146+25 MEDIAN OUTLET - 141+81 | 444 | | OUTLET TO CULVERT |
| 1+70 - 4+21 OUTSIDE OUTLET - 1+70 SUMMIT - 4+21 | 251 | 15 | 1 | 73+50 - 77+50 MEDIAN OUTLET - 77+50 | 400 | 16 | 1 | 140+55 - 141+81 OUTSIDE OUTLET - 140+55 | 126 | 15 | 1 |
| 4+21 - 9+00 MEDIAN OUTLET - 9+00 | 479 | 20 | 1 | 73+50 - 77+50 MEDIAN OUTLET - 77+50 | 400 | 20 | 1 | 141+81 - 146+25 OUTSIDE OUTLET - 141+81 SUMMIT - 146+25 | 444 | | OUTLET TO CULVERT |
| 4+21 - 7+40 OUTSIDE OUTLET - 4+21 | 319 | 16 | 1 | 77+50 - 82+00 MEDIAN OUTLET - 82+00 | 450 | 16 | 1 | 146+25 - 151+00 MEDIAN OUTLET - 146+25 | 475 | 16 | 1 |
| 7+40 - 9+00 OUTSIDE OUTLET - 9+00 SUMMIT - 7+40 | 160 | 20 | 1 | 77+50 - 80+30 OUTSIDE OUTLET - 80+30 | 280 | 20 | 1 | 146+25 - 149+12 OUTSIDE OUTLET - 149+12 | 287 | 20 | 1 |
| 9+00 - 14+00 MEDIAN OUTLET - 14+00 | 500 | 20 | 1 | 80+30 - 83+30 OUTSIDE OUTLET - 83+30 | 300 | 20 | 1 | 149+12 - 151+00 OUTSIDE OUTLET - 149+12 | 188 | 20 | 1 |
| 9+00 - 14+00 OUTSIDE OUTLET - 14+00 | 500 | 16 | 1 | 82+00 - 85+69 MEDIAN OUTLET - 85+69 | 369 | 16 | 1 | 151+00 - 155+50 MEDIAN OUTLET - 151+00 | 450 | 16 | 1 |
| 14+00 - 18+95 MEDIAN OUTLET - 18+95 | 495 | 20 | 1 | 83+30 - 87+00 OUTSIDE OUTLET - 87+00 | 370 | 20 | 1 | 151+00 - 155+50 OUTSIDE OUTLET - 151+00 | 450 | 20 | 1 |
| 14+00 - 19+14 OUTSIDE OUTLET - 19+14 | 514 | 16 | 1 | 86+31 - 91+00 MEDIAN OUTLET - 91+00 | 469 | 16 | 1 | 155+50 - 160+50 MEDIAN OUTLET - 155+50 | 500 | | OUTLET TO CULVERT |
| 18+95 - 23+50 MEDIAN OUTLET - 23+50 | 455 | 11 | OUTLET TO CULVERT | 87+00 - 91+00 OUTSIDE OUTLET - 91+00 | 400 | 20 | 1 | 155+50 - 160+50 OUTSIDE OUTLET - 155+50 | 500 | | OUTLET TO CULVERT |
| 23+50 - 28+45 MEDIAN OUTLET - 28+45 | 495 | 16 | 1 | 91+00 - 96+00 MEDIAN OUTLET - 96+00 | 500 | 16 | 1 | 160+50 - 165+50 MEDIAN OUTLET - 160+50 | 500 | 16 | 1 |
| 25+71 - 28+45 OUTSIDE OUTLET - 28+45 | 274 | | OUTLET TO CULVERT | 91+00 - 96+00 OUTSIDE OUTLET - 96+00 | 500 | 20 | 1 | 160+50 - 165+50 OUTSIDE OUTLET - 160+50 | 500 | 20 | 1 |
| 28+45 - 32+00 MEDIAN OUTLET - 28+45 | 355 | | OUTLET TO CULVERT | 96+00 - 101+00 MEDIAN OUTLET - 101+00 | 500 | 16 | 1 | 165+50 - 168+39 MEDIAN OUTLET - 165+50 SUMMIT - 168+39 | 289 | 16 | 1 |
| 28+45 - 32+00 OUTSIDE OUTLET - 28+45 | 355 | | OUTLET TO CULVERT | 96+00 - 101+00 OUTSIDE OUTLET - 101+00 | 500 | 20 | 1 | 165+50 - 169+68 OUTSIDE OUTLET - 165+50 SUMMIT - 169+68 | 418 | 20 | 1 |
| 32+00 - 36+00 MEDIAN OUTLET - 32+00 | 400 | 16 | 1 | 101+00 - 105+89 MEDIAN OUTLET - 105+89 | 489 | | OUTLET TO SHOULDER INLET | * OUTLET - 172+50 MEDIAN OUTLET - 171+22 | 11 | 11 | 1 |
| 32+00 - 36+00 OUTSIDE OUTLET - 32+00 | 400 | 20 | 1 | 101+00 - 105+89 OUTSIDE OUTLET - 105+89 | 489 | | OUTLET TO SHOULDER INLET | * OUTLET - 172+50 OUTSIDE OUTLET - 171+14 | 15 | 15 | 1 |
| 36+00 - 40+45 MEDIAN OUTLET - 36+00 | 445 | 16 | 1 | 108+89 - 110+07 MEDIAN OUTLET - 110+07 | 118 | 16 | 1 | * OUTLET - 177+50 MEDIAN OUTLET - 175+00 | 16 | 16 | 1 |
| 36+00 - 40+45 OUTSIDE OUTLET - 36+00 | 445 | 20 | 1 | 108+89 - 110+07 OUTSIDE OUTLET - 110+07 | 118 | | OUTLET TO SHOULDER INLET | * OUTLET - 177+50 OUTSIDE OUTLET - 175+00 | 20 | 15 | 1 |
| 40+45 - 45+00 MEDIAN OUTLET - 40+45 | 455 | | OUTLET TO CULVERT | 110+07 - 113+00 MEDIAN OUTLET - 110+07 | 293 | 16 | 1 | * OUTLET - 182+50 MEDIAN OUTLET - 180+00 | 16 | 16 | 1 |
| 40+45 - 45+00 OUTSIDE OUTLET - 40+45 | 455 | | OUTLET TO CULVERT | 110+07 - 112+20 OUTSIDE OUTLET - 110+07 | 213 | | OUTLET TO SHOULDER INLET | * OUTLET - 182+50 OUTSIDE OUTLET - 180+00 | 20 | 20 | 1 |
| 45+00 - 50+00 MEDIAN OUTLET - 45+00 | 500 | 16 | 1 | 113+00 - 118+00 MEDIAN OUTLET - 113+00 | 500 | 16 | 1 | * OUTLET - 187+50 MEDIAN OUTLET - 185+00 | 16 | 16 | 1 |
| 45+00 - 50+00 OUTSIDE OUTLET - 45+00 | 500 | 20 | 1 | 112+20 - 114+36 OUTSIDE OUTLET - 112+20 | 216 | | OUTLET TO SHOULDER INLET | * OUTLET - 187+50 OUTSIDE OUTLET - 185+00 | 20 | 20 | 1 |
| 50+00 - 54+25 MEDIAN OUTLET - 50+00 SUMMIT - 54+25 | 425 | 16 | 1 | 114+36 - 118+00 OUTSIDE OUTLET - 114+36 | 364 | | OUTLET TO SHOULDER INLET | 190+00 - 192+69 MEDIAN OUTLET - 190+00 SUMMIT - 192+69 | 269 | 16 | 1 |
| 50+00 - 54+46 OUTSIDE OUTLET - 50+00 SUMMIT - 54+46 | 446 | 20 | 1 | 118+00 - 123+00 MEDIAN OUTLET - 118+00 | 500 | 16 | 1 | 190+00 - 193+31 OUTSIDE OUTLET - 190+00 | 331 | 20 | 1 |
| 55+85 - 60+50 MEDIAN OUTLET - 55+85 | 465 | 11 | 1 | 118+00 - 123+00 OUTSIDE OUTLET - 118+00 | 500 | 20 | 1 | 193+31 - 196+00 MEDIAN OUTLET - 193+31 SUMMIT - 196+00 | 269 | 11 | 1 |
| 55+85 - 60+50 OUTSIDE OUTLET - 55+85 | 485 | 15 | 1 | 123+00 - 128+00 MEDIAN OUTLET - 123+00 | 500 | 16 | 1 | 193+31 - 196+00 OUTSIDE OUTLET - 193+31 SUMMIT - 196+00 | 269 | 20 | 1 |
| 60+50 - 65+00 MEDIAN OUTLET - 60+50 | 450 | 16 | 1 | 123+00 - 128+00 OUTSIDE OUTLET - 123+00 | 500 | 20 | 1 | | | | |
| 60+50 - 65+00 OUTSIDE OUTLET - 60+50 | 450 | 20 | 1 | 128+00 - 133+00 MEDIAN OUTLET - 128+00 | 500 | 16 | 1 | | | | |
| 65+00 - 69+00 MEDIAN OUTLET - 65+00 SUMMIT - 69+00 | 400 | 16 | 1 | 128+00 - 133+00 OUTSIDE OUTLET - 128+00 | 500 | 20 | 1 | | | | |
| 65+00 - 69+00 OUTSIDE OUTLET - 65+00 SUMMIT - 69+00 | 400 | 20 | 1 | 133+00 - 138+00 MEDIAN OUTLET - 133+00 | 500 | 16 | 1 | | | | |
| 69+00 - 73+50 MEDIAN OUTLET - 73+50 | 450 | 16 | 1 | 133+00 - 138+00 OUTSIDE OUTLET - 133+00 | 500 | 20 | 1 | | | | |
| | | | | 138+00 - 139+77 MEDIAN OUTLET - 138+00 SUMMIT - 139+77 | 177 | 16 | 1 | | | | |
| | | | | 138+00 - 139+24 OUTSIDE OUTLET - 138+00 SUMMIT - 139+24 | 124 | 20 | 1 | | | | |

* SEE ROCK DRAIN DETAIL ON SHEET NO. 9

SCHEDULE OF QUANTITIES
F. A. P. ROUTE 302
SECTION 1-7 (X-1, L, SG)
ADAMS COUNTY

PROJECT NO. 8952096A

DATE MARCH 1995

SPRINGFIELD, FLORIDA & ROCKFORD, ILLINOIS

| | | |
|-----------|------|----|
| DESIGNED | DATE | BY |
| DRAWN | DATE | BY |
| CHECKED | DATE | BY |
| REVISIONS | DATE | BY |

FOR INFORMATIONAL PURPOSES. THE LOCATIONS PROVIDED ARE BASED ON THE ORIGINAL CONSTRUCTION PLANS AND SHOULD BE VERIFIED IN THE FIELD.

| | | |
|----------------------------|------------------|-----------------|
| USER NAME = mindert | DESIGNED - _____ | REVISED - _____ |
| | DRAWN - _____ | REVISED - _____ |
| PLOT SCALE = 20.0000' / 1" | CHECKED - _____ | REVISED - _____ |
| PLOT DATE = 10/22/2021 | DATE - _____ | REVISED - _____ |

**STATE OF ILLINOIS
DEPARTMENT OF TRANSPORTATION**

UNDERDRAIN DETAILS

SCALE: N/A SHEET 4 OF 6 SHEETS STA. N/A TO STA. N/A

| | | | | |
|--------------------|----------|------------------|--------------|-----------|
| F.A.P. RTE. | SECTION | COUNTY | TOTAL SHEETS | SHEET NO. |
| 302 | (1-7)0-1 | ADAMS | 27 | 25 |
| CONTRACT NO. 72M19 | | | | |
| ILLINOIS | | FED. AID PROJECT | | |

MODEL: Defaul... FILE: 20210319... PROJECT: 05721910... DRAWING: 05721910... SHEET: 24

SCHEDULE OF QUANTITIES

| | | | |
|----------------------|--------|--------------|-----------|
| SECTION | COUNTY | TOTAL SHEETS | SHEET NO. |
| 302 1-7 (X-1, L, SG) | ADAMS | 27 | 25 |

| LOCATION | PIPE UNDERDRAINS 4" LIN. FT. | PIPE UNDERDRAINS 4" (SPECIAL) LIN. FT. | CONCRETE HEADWALL FOR PIPE DRAIN EACH |
|---|------------------------------|--|---------------------------------------|
| 196+00 - 199+00 MEDIAN OUTLET - 199+00 | 300 | | 16 |
| 196+00 - 199+00 OUTSIDE OUTLET - 199+00 | 300 | | 20 |
| 199+00 - 203+00 MEDIAN OUTLET - 203+00 | 400 | | 16 |
| 199+00 - 203+00 OUTSIDE OUTLET - 203+00 | 400 | | 20 |
| 203+00 - 208+00 MEDIAN OUTLET - 208+00 | 500 | | 16 |
| 203+00 - 208+00 OUTSIDE OUTLET - 208+00 | 500 | | 20 |
| 208+00 - 212+00 MEDIAN | 400 | | CONNECT TO EXISTING UNDERDRAIN |
| 208+00 - 212+00 OUTSIDE | 400 | | CONNECT TO EXISTING UNDERDRAIN |
| TOTALS | 35,892 | 1,529 | 85 |

| LOCATION | PIPE UNDERDRAINS 4" LIN. FT. | PIPE UNDERDRAINS 4" (SPECIAL) LIN. FT. | CONCRETE HEADWALL FOR PIPE DRAIN EACH |
|---|------------------------------|--|---------------------------------------|
| F.A.P. 302 RTE. 24 RAMP "B" | | | |
| 1+50 - 3+00 INSIDE OUTLET - 1+50 | 150 | 16 | 1 |
| 1+50 - 3+00 OUTSIDE OUTLET - 1+50 | 150 | 18 | 1 |
| 3+00 - 8+00 INSIDE OUTLET - 3+00 | 500 | 16 | 1 |
| 3+00 - 8+00 OUTSIDE OUTLET - 3+00 | 500 | 18 | 1 |
| 8+00 - 13+00 INSIDE OUTLET - 8+00 | 500 | 16 | 1 |
| 8+00 - 13+00 OUTSIDE OUTLET - 8+00 | 500 | 18 | 1 |
| 13+00 - 17+81 INSIDE OUTLET - 13+00 SUMMIT - 17+81 | 481 | 16 | |
| 13+00 - 17+81 OUTSIDE OUTLET - 13+00 SUMMIT - 17+81 | 481 | 18 | |
| 17+81 - 21+42 INSIDE OUTLET - 21+42 | 361 | | OUTLET TO CULVERT |
| 17+81 - 21+42 OUTSIDE OUTLET - 21+42 | 361 | | OUTLET TO CULVERT |
| 21+42 - 26+00 OUTSIDE OUTLET - 26+00 | 458 | 18 | 1 |
| 26+00 - 30+90 OUTSIDE OUTLET - 30+90 | 490 | 18 | 1 |
| TOTALS | 4,932 | 172 | 8 |

| LOCATION | PIPE UNDERDRAINS 4" LIN. FT. | PIPE UNDERDRAINS 4" (SPECIAL) LIN. FT. | CONCRETE HEADWALL FOR PIPE DRAIN EACH |
|---|------------------------------|--|---------------------------------------|
| F.A.P. 302 RTE. 24 RAMP "C" | | | |
| 24+00 - 19+00 INSIDE OUTLET - 24+00 | 500 | 16 | 1 |
| 24+00 - 19+00 OUTSIDE OUTLET - 24+00 | 500 | 18 | 1 |
| 19+00 - 14+00 INSIDE OUTLET - 19+00 | 500 | 16 | 1 |
| 19+00 - 14+00 OUTSIDE OUTLET - 19+00 | 500 | 18 | 1 |
| 14+00 - 11+50 INSIDE OUTLET - 14+00 | 250 | 16 | 1 |
| 14+00 - 11+50 OUTSIDE OUTLET - 14+00 | 250 | 18 | 1 |
| 11+50 - 8+75 INSIDE OUTLET - 11+50 SUMMIT - 8+75 | 275 | 16 | 1 |
| 11+50 - 8+75 OUTSIDE OUTLET - 11+50 SUMMIT - 8+75 | 275 | 18 | 1 |
| 8+75 - 6+56 INSIDE OUTLET - 6+56 | 219 | | OUTLET TO CULVERT |
| 8+75 - 6+56 OUTSIDE OUTLET - 6+56 | 219 | | OUTLET TO CULVERT |
| TOTALS | 3,488 | 136 | 8 |

| LOCATION | PIPE UNDERDRAINS 4" LIN. FT. | PIPE UNDERDRAINS 4" (SPECIAL) LIN. FT. | CONCRETE HEADWALL FOR PIPE DRAIN EACH |
|--------------------------------------|------------------------------|--|---------------------------------------|
| F.A.P. 302 RTE. 61 RAMP "C" | | | |
| 0+23 - 5+23 OUTSIDE OUTLET - 5+23 | 500 | 18 | 1 |
| 6+60 - 10+23 INSIDE OUTLET - 10+23 | 363 | 16 | 1 |
| 5+23 - 10+23 OUTSIDE OUTLET - 10+23 | 500 | 18 | 1 |
| 10+23 - 15+00 INSIDE OUTLET - 10+23 | 477 | 16 | |
| 10+23 - 15+00 OUTSIDE OUTLET - 10+23 | 477 | 18 | |
| 15+00 - 17+50 INSIDE OUTLET - 15+00 | 250 | 16 | 1 |
| 15+00 - 17+50 OUTSIDE OUTLET - 15+00 | 250 | 18 | 1 |
| TOTALS | 2,817 | 120 | 5 |

| LOCATION | PIPE UNDERDRAINS 4" LIN. FT. | PIPE UNDERDRAINS 4" (SPECIAL) LIN. FT. | CONCRETE HEADWALL FOR PIPE DRAIN EACH |
|-----------------------|------------------------------|--|---------------------------------------|
| F.A.P. 302 N.B. LANES | 60,037 | 2,599 | 141 |
| F.A.P. 302 S.B. LANES | 35,892 | 1,529 | 85 |
| U.S. RTE. 24 RAMP "B" | 4,932 | 172 | 8 |
| U.S. RTE. 24 RAMP "C" | 3,488 | 136 | 8 |
| ILL. RTE. 61 RAMP "C" | 2,817 | 120 | 5 |
| TOTAL | 107,166 | 4,556 | 247 |

| | | | |
|------------|----------|------|-------|
| DATE | BY | CHKD | APP'D |
| 10/22/2021 | minderbt | | |


SCHEDULE OF QUANTITIES
F.A.P. ROUTE 302
SECTION 1-7 (X-1, L, SG)
ADAMS COUNTY

DESIGNED - _____

DRAWN - _____

CHECKED - _____

DATE - _____



HANSON ENGINEERS
INCORPORATED

SPRINGFIELD, PEORIA & ROCKFORD, ILLINOIS

FILE NO. 0952056A

MARCH 1995

FOR INFORMATIONAL PURPOSES. THE LOCATIONS PROVIDED ARE BASED ON THE ORIGINAL CONSTRUCTION PLANS AND SHOULD BE VERIFIED IN THE FIELD.

| | | |
|----------------------------|-------------------|-------------------|
| USER NAME = minderbt | DESIGNED - _____ | REVISED - _____ |
| DRAWN - _____ | REVISIONS - _____ | |
| PLOT SCALE = 20.0000' / 1" | CHECKED - _____ | REVISIONS - _____ |
| PLOT DATE = 10/22/2021 | DATE - _____ | REVISIONS - _____ |

STATE OF ILLINOIS
DEPARTMENT OF TRANSPORTATION

| | |
|---------------------------|---------------------|
| UNDERDRAIN DETAILS | |
| SCALE: N/A | SHEET 5 OF 6 SHEETS |
| STA. N/A | TO STA. N/A |

| | | | | |
|---------------------------|----------|--------|--------------|-----------|
| F.A.P. RTE. | SECTION | COUNTY | TOTAL SHEETS | SHEET NO. |
| 302 | (1-7)0-1 | ADAMS | 27 | 26 |
| CONTRACT NO. 72M19 | | | | |
| ILLINOIS FED. AID PROJECT | | | | |

MODEL: Defaul...
 FILE: 30219...
 PROJECT: 0952056A...
 DATE: 10/22/2021

