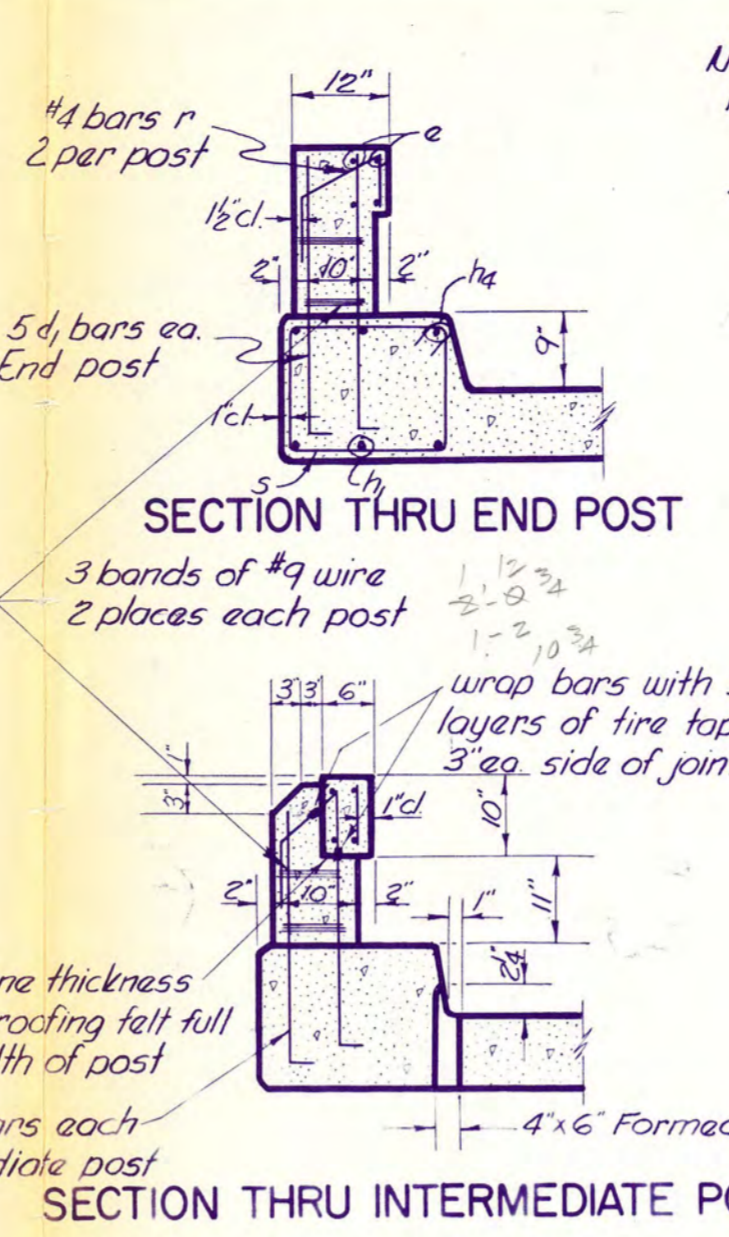
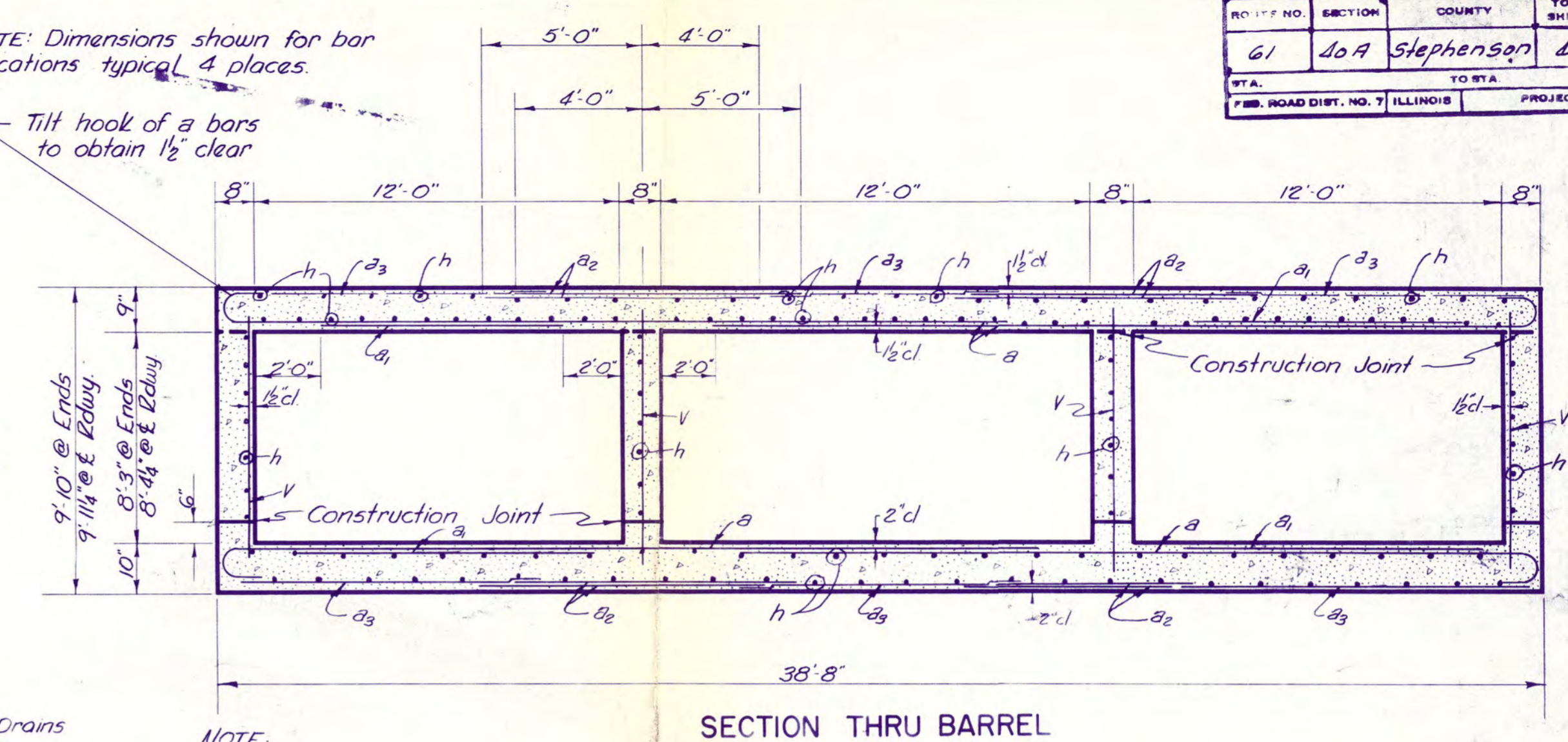


HALF LONG SECTION HALF ELEVATION
Dimensions at 12' to E. Roadway

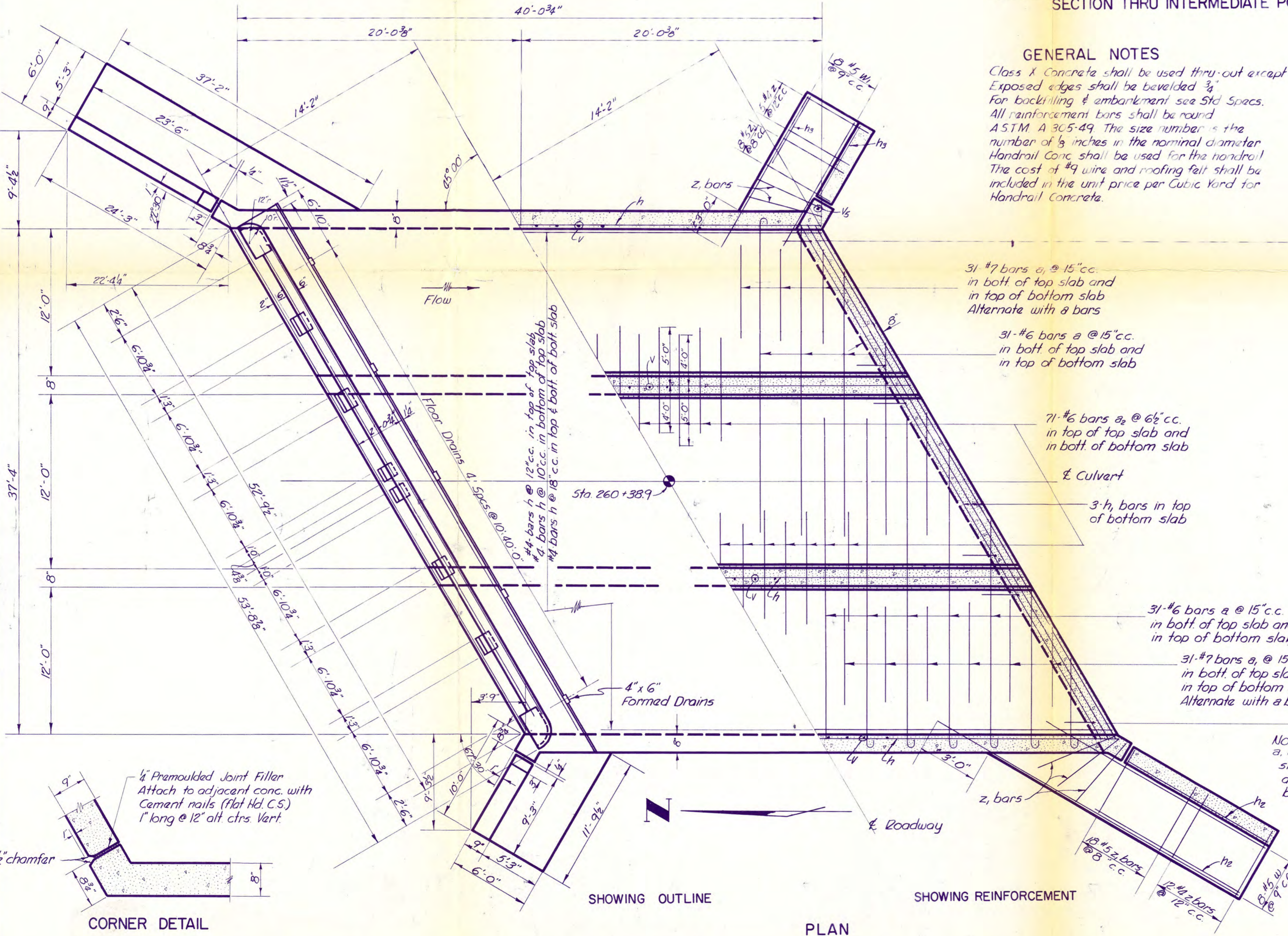


GENERAL NOTES

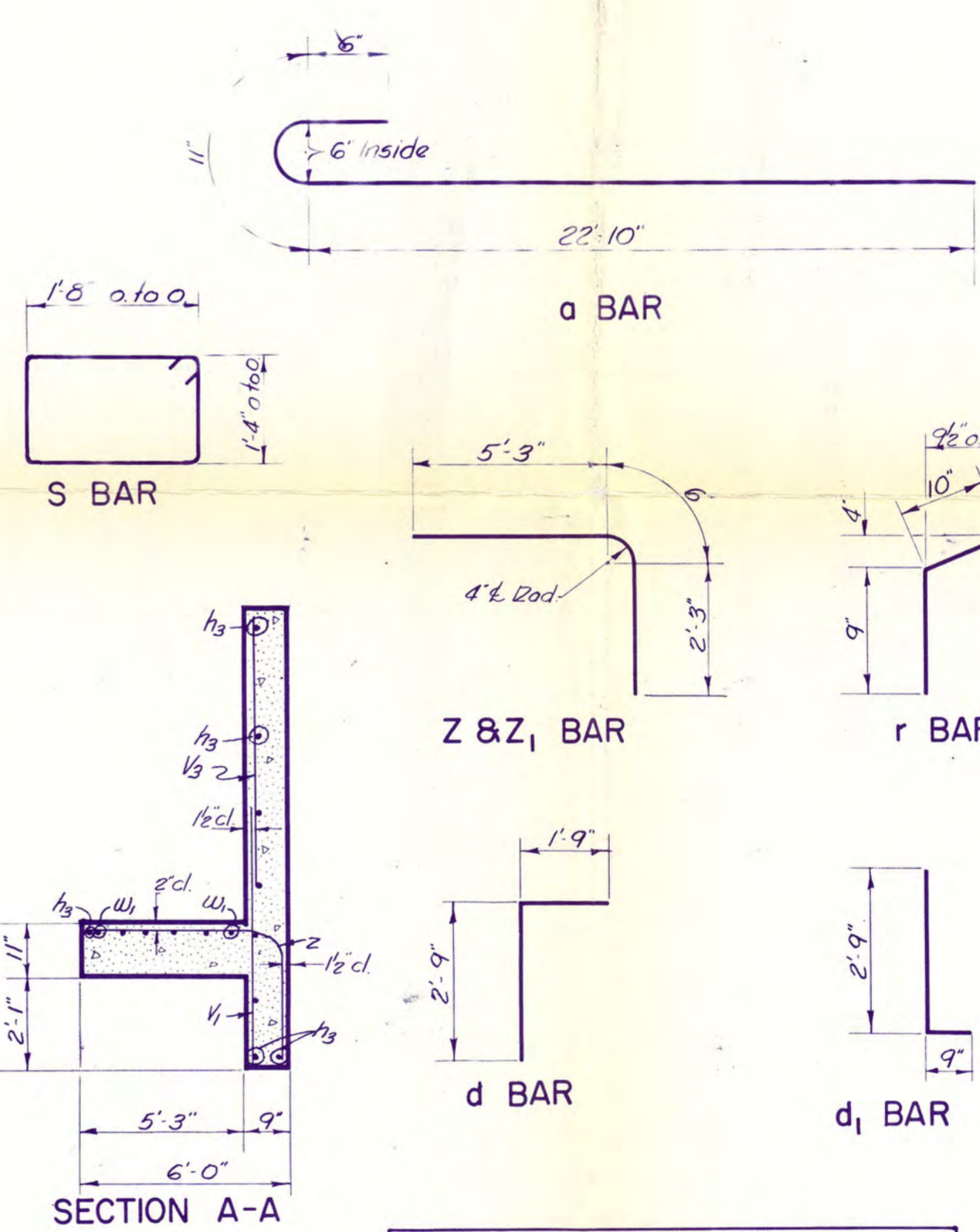
Class X Concrete shall be used thru-out except as noted. Exposed edges shall be beveled 3". For backfilling & embankment see Std. Specs. All reinforcement bars shall be round. ASTM A 305-49. The size number is the number of 8 inches in the nominal diameter. Handrail Conc. shall be used for the handrail. The cost of #9 wire and roofing felt shall be included in the unit price per Cubic Yard for Handrail Concrete.



SECTION THRU BARREL



PLAN



LOCATION OF h BARS

Top of Top of slab	36
Bottom of top slab	45
Top of Bottom slab	26
Bottom of bottom slab	25
Each sidewall	6
Each interior wall	6

Each h bar composed of two lengths and one splice. Total lengths - 39'-0"

BILL OF MATERIAL

BAR	NO	SIZE	LENGTH
a	124	#6	24'-3"
a1	124	#7	8'-0"
a2	284	#6	9'-0"
a3	108	#4	7'-3"
d	72	#4	4'-6"
d1	68	#4	3'-6"
e	16	#5	25'-6"
h	312	#4	20'-6"
h1	24	#6	28'-0"
h2	18	#4	23'-3"
h3	18	#4	9'-0"
h4	12	#5	28'-0"
r	32	#4	2'-3"
s	108	#3	6'-6"
v	160	#4	9'-0"
v1	34	#4	5'-9"
v2	44	#5	5'-9"
v3	22	#4	4'-6"
v4	22	#4	6'-3"
v5	28	#4	8'-0"
w	16	#5	27'-0"
w1	16	#5	13'-0"
z	34	#4	8'-0"
z1	62	#5	8'-0"

STA. 260+38.9
CEDAR CREEK
BUILT 1958
FAS. RT. 61 SEC. 40A
PROJ. S-785(2)
LOADING H15-S12

NAME PLATE LETTERING
State of Illinois Std. 2113

089 5007
STA. 260+38.9 CULVERT
FAS. RT. 61 SA. RT. 1A
SECTION 40-A STEPHENSON CO.

f3 = 20,000 #10"
fc = 1,400 #10"
n = 10
H15-S12 Loading

S.M. A04-MORNINGSTAR

B.M. Sp. & W. in P.P. Lt. Sta. 239+67
Elev. 915.06

B.M. Sp. & W. in 24" Tree Rt. 255+83 Elev. 890.08
B.M. Sp. & W. in P.P. 43' Rt. Sta. 259+27 Elev. 871.79

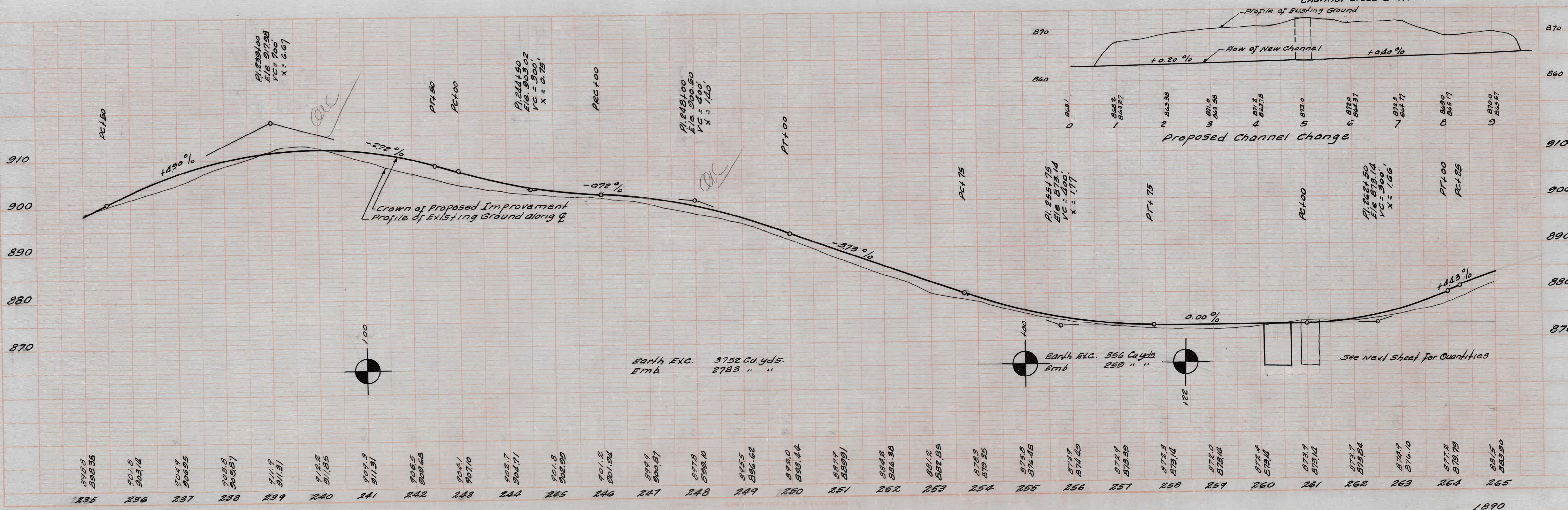
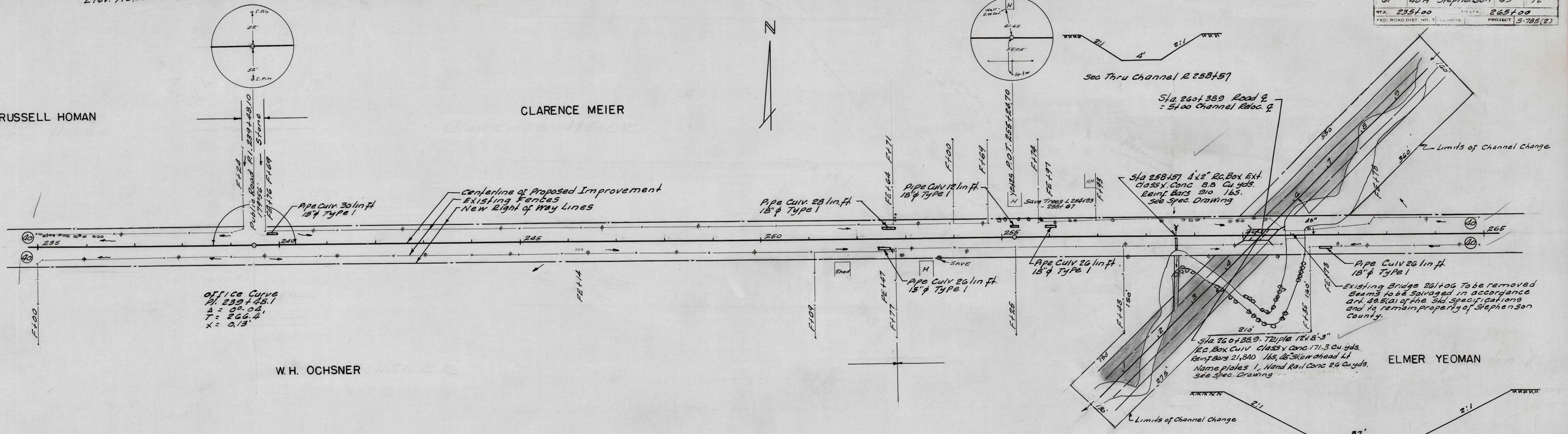
ROUTE NO.	SECTION	COUNTY	TOTAL SHEETS	SHEET NO.
61	40A	Stephenson	43	12
STA. 235+00		STA. 265+00		
FED. ROAD DIST. NO. 7 LIMITS PROJECT 5-785(2)				

RUSSELL HOMAN

CLARENCE MEIER

W. H. OCHSNER

ELMER YEOMAN



PLAN
 CHECKED BY: []
 DRAWN BY: []
 DATE: []

PROFILE
 CHECKED BY: []
 DRAWN BY: []
 DATE: []