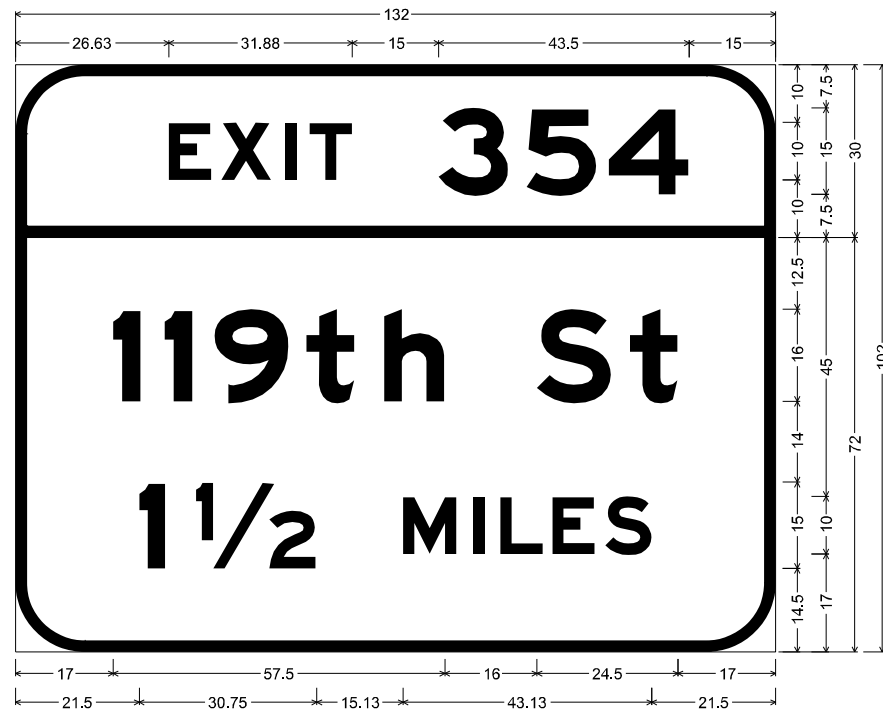


STRUCTURE NUMBER		1S0161057L356.0-000	
LOCATION		EXPRESSWAY	
SIZE (W x H)	EXIT PLAQUE	-	
	MAIN PANEL	11' X 8.5'	
MOUNTING / TYPE		OVERHEAD / TRUSS	
MOUNTING LOC (L, M, R)		LEFT	
SHEETING / COLOR	BACKGROUND	TYPE:	ZZ
		COLOR:	GREEN
		TYPE:	
	LEGEND / BORDER	TYPE:	ZZ
		COLOR:	WHITE
		TYPE:	
	COLOR:		

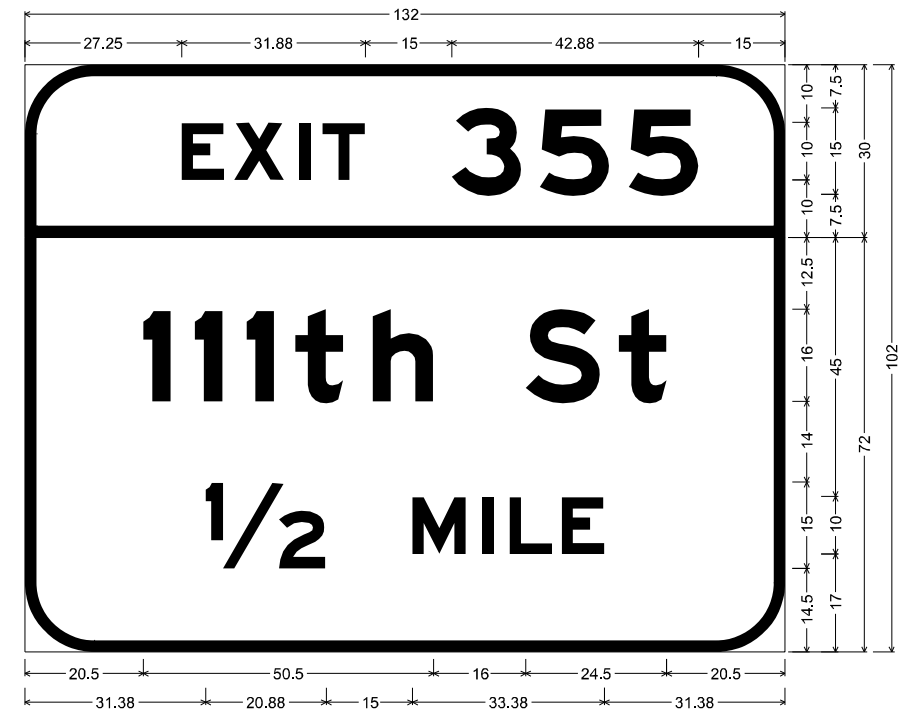
STRUCTURE NUMBER		1S0161057L356.0-000	
LOCATION		EXPRESSWAY	
SIZE (W x H)	EXIT PLAQUE	-	
	MAIN PANEL	11' X 8.5'	
MOUNTING / TYPE		OVERHEAD / TRUSS	
MOUNTING LOC (L, M, R)		RIGHT	
SHEETING / COLOR	BACKGROUND	TYPE:	ZZ
		COLOR:	GREEN
		TYPE:	
	LEGEND / BORDER	TYPE:	ZZ
		COLOR:	WHITE
		TYPE:	
	COLOR:		



12.00" Radius, 2.00" Border, White on Green;  
 "EXIT", E Mod 2K 120% spacing; "354", E Mod 2K;

12.00" Radius, 2.00" Border, White on Green;  
 "119th St", E Mod 2K; "1 1/2 MILES", E Mod 2K;  
 Table of widths and spaces

26.63	E	7.38	1.75	X	8.63	2.50	I	2.00	2.25	T	7.38	15.00	3	12.13	3.13	5	12.13	2.13	4	14.00	15.00
17.00	I	4.75	4.13	I	4.88	3.75	9	13.00	3.00	t	8.38	5.13	h	10.50	16.00	S	13.00	3.25	t	8.25	17.00
21.50	I	4.50	5.38	1/2	20.88	15.00	M	9.38	2.75	I	2.00	2.88	L	7.38	1.63	E	7.38	1.75	S	8.13	21.50



12.00" Radius, 2.00" Border, White on Green;  
 "EXIT", E Mod 2K 120% spacing; "355", E Mod 2K;

12.00" Radius, 2.00" Border, White on Green;  
 "111th St", E Mod 2K; "1/2 MILE", E Mod 2K;  
 Table of widths and spaces

27.25	E	7.38	1.75	X	8.63	2.50	I	2.00	2.25	T	7.38	15.00	3	12.13	3.13	5	12.13	3.38	5	12.13	15.00
20.50	I	4.88	4.13	I	4.75	4.25	I	4.75	3.75	t	8.25	5.13	h	10.63	16.00	S	12.88	3.25	t	8.25	20.63
31.38	1/2	20.88	15.00	M	9.38	2.75	I	2.00	2.88	L	7.38	1.50	E	7.50	31.38						

MODEL: D:\p\p\Design\KKS\Signs Design\Contract-NO-62M84-46559-Sign-Structure-Design-157-from-L94-to-L90-CADD\Contract-NO-62M84-46559-Sign-Structure-Design-157-from-L94-to-L90-rev-06-10-2021\VERSION-2.dgn  
 FILE NAME: S:\P\Design\KKS\Signs Design\Contract-NO-62M84-46559-Sign-Structure-Design-157-from-L94-to-L90-CADD\Contract-NO-62M84-46559-Sign-Structure-Design-157-from-L94-to-L90-rev-06-10-2021\VERSION-2.dgn

USER NAME = kobykaka	DESIGNED - KK	REVISED -
DRAWN - KK	REVISIONS -	
PLOT SCALE = 40,0000 */ in.	CHECKED - LP	REVISED -
PLOT DATE = 6/10/2021	DATE - 06/20/2021	REVISED -

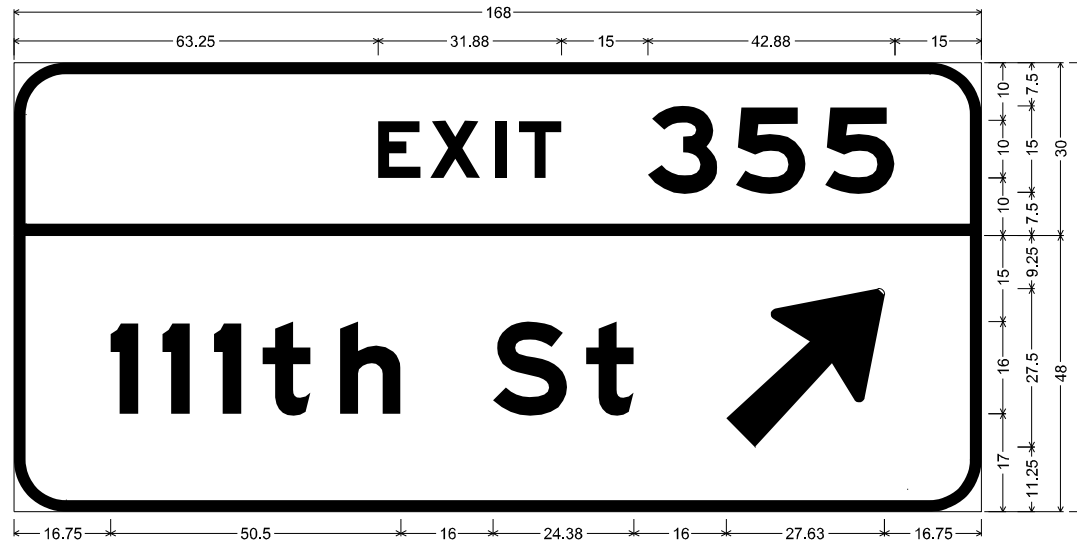
**STATE OF ILLINOIS  
DEPARTMENT OF TRANSPORTATION**

**SIGN PANEL DESIGN**

SCALE: SHEET OF SHEETS STA. TO STA.

F.A. RTE.	SECTION	COUNTY	TOTAL SHEETS	SHEET NO.
	2020-212-R5&T	COOK	229	201
CONTRACT NO. 62M84				
ILLINOIS		FED. AID PROJECT		

STRUCTURE NUMBER		1C0161057L355.5-000	
LOCATION		EXPRESSWAY	
SIZE (W x H)	EXIT PLAQUE	-	
	MAIN PANEL	14' X 6.5'	
MOUNTING / TYPE		OVERHEAD / CANTILEVER	
MOUNTING LOC (L, M, R)			
SHEETING / COLOR	BACKGROUND	TYPE:	ZZ
		COLOR:	GREEN
		TYPE:	
		COLOR:	
	LEGEND / BORDER	TYPE:	ZZ
		COLOR:	WHITE
		TYPE:	
		COLOR:	



9.00" Radius, 2.00" Border, White on Green;  
 "EXIT", E Mod 2K 120% spacing; "355", E Mod 2K;

9.00" Radius, 2.00" Border, White on Green;  
 "111th St", E Mod 2K; Arrow 160 - 35.00" 45°;

Table of widths and spaces

63.25	E	7.38	1.75	X	8.63	2.50	I	2.00	2.25	T	7.38	15.00	3	12.13	3.13	5	12.13	3.38	5	12.13	15.00		
16.75	t	4.88	4.13	i	4.75	4.25	l	4.75	3.75	t	8.25	5.13	h	10.50	16.00	S	13.00	3.25	t	8.25	16.00	27.50	16.88

MODEL: D:\p\p\Design\KKS\Signs Design\Contract-NO-62M84-46559-Signs-Structure-Design-157-from-194-co-180-CADD\Contract-NO-62M84-46559-Signs-Structure-Design-157-from-194-co-180-rev-06-10-2021\VERSION-2.dgn  
 FILE NAME: S:\P\Design\KKS\Signs Design\Contract-NO-62M84-46559-Signs-Structure-Design-157-from-194-co-180-CADD\Contract-NO-62M84-46559-Signs-Structure-Design-157-from-194-co-180-rev-06-10-2021\VERSION-2.dgn

USER NAME = koby/kaka	DESIGNED - KK	REVISED -
DRAWN - KK	REVISIONS -	
PLOT SCALE = 40,0000 * / in.	CHECKED - LP	REVISED -
PLOT DATE = 6/10/2021	DATE - 06/20/2021	REVISED -

**STATE OF ILLINOIS  
DEPARTMENT OF TRANSPORTATION**

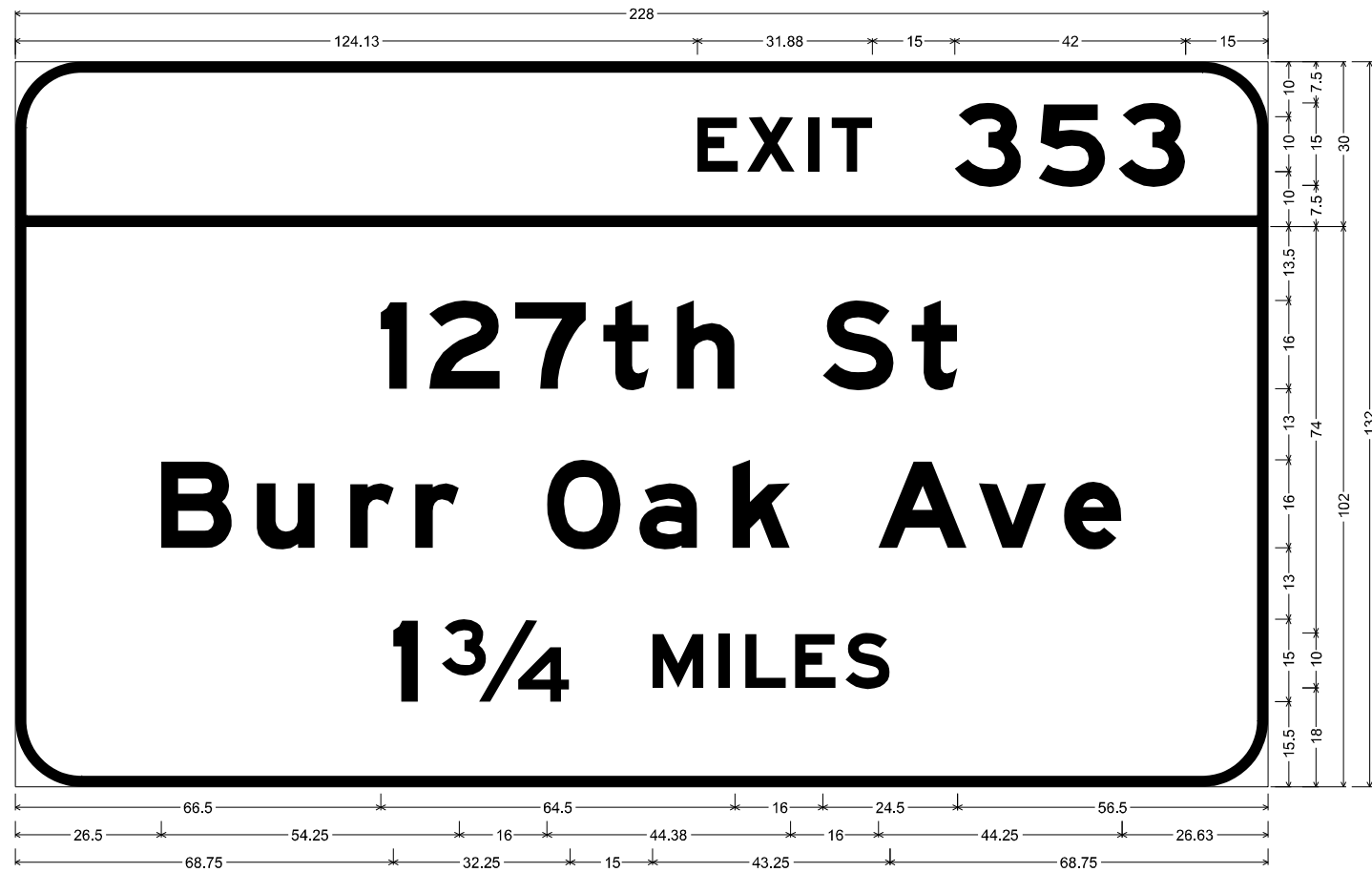
**SIGN PANEL DESIGN**

SCALE: SHEET OF SHEETS STA. TO STA.

F.A. RTE.	SECTION	COUNTY	TOTAL SHEETS	SHEET NO.
	2020-212-R5&T	COOK	229	202
CONTRACT NO. 62M84			ILLINOIS FED. AID PROJECT	

STRUCTURE NUMBER		1B0161057L355.3-000	
LOCATION		EXPRESSWAY	
SIZE (W x H)	EXIT PLAQUE	-	
	MAIN PANEL	19' X 11'	
MOUNTING / TYPE		OVERHEAD / BRIDGE	
MOUNTING LOC (L, M, R)		LEFT	
SHEETING / COLOR	BACKGROUND	TYPE:	ZZ
		COLOR:	GREEN
		TYPE:	
	LEGEND / BORDER	TYPE:	ZZ
		COLOR:	WHITE
		TYPE:	
	COLOR:		

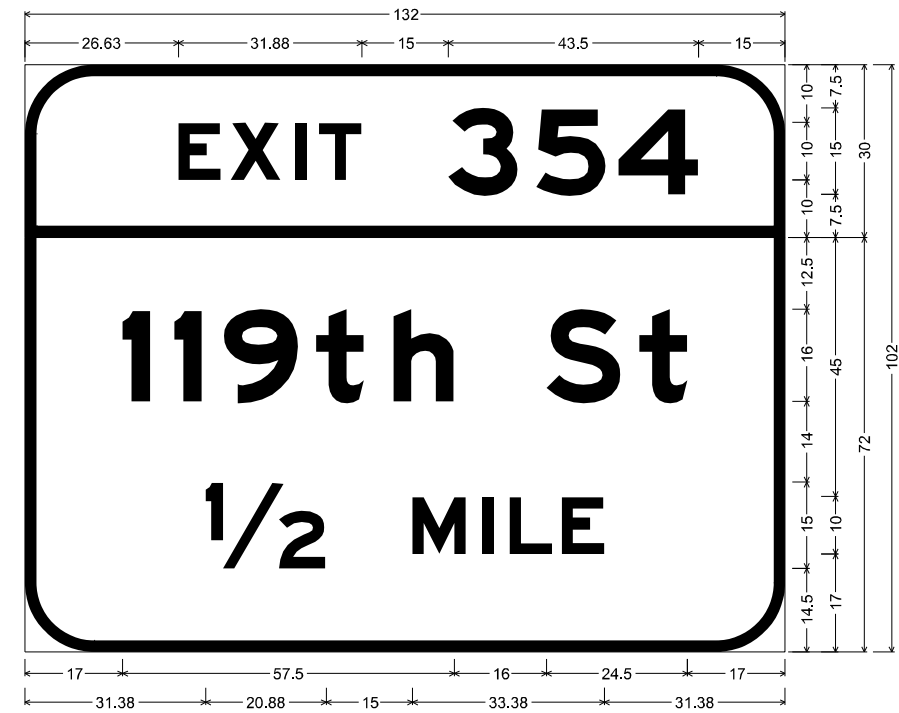
STRUCTURE NUMBER		1B0161057L355.3-000	
LOCATION		EXPRESSWAY	
SIZE (W x H)	EXIT PLAQUE	-	
	MAIN PANEL	11' X 8.5'	
MOUNTING / TYPE		OVERHEAD / BRIDGE	
MOUNTING LOC (L, M, R)		RIGHT	
SHEETING / COLOR	BACKGROUND	TYPE:	ZZ
		COLOR:	GREEN
		TYPE:	
	LEGEND / BORDER	TYPE:	ZZ
		COLOR:	WHITE
		TYPE:	
	COLOR:		



12.00" Radius, 2.00" Border, White on Green;  
 "EXIT", E Mod 2K 120% spacing; "353", E Mod 2K;

12.00" Radius, 2.00" Border, White on Green;  
 "127th St", E Mod 2K; "Burr Oak Ave", E Mod 2K; "1 3/4 MILES", E Mod 2K;  
 Table of widths and spaces

124.13	E	7.38	1.75	X	8.63	2.50	I	2.00	2.25	T	7.38	15.00	3	12.13	3.13	5	12.13	2.50	3	12.13	15.00
66.50	I	4.88	4.00	2	12.88	2.75	7	13.00	3.00	t	8.25	5.13	h	10.63	16.00	S	13.00	3.13	t	8.38	56.50
26.50	B	13.00	4.50	u	10.50	6.50	r	8.00	3.75	r	8.00	16.00	O	13.50	3.38	a	10.50	6.38	k	10.63	16.00
68.75	I	4.50	4.38	3/4	23.38	15.00	M	9.25	2.88	I	2.00	2.75	L	7.38	1.63	E	7.38	1.88	S	8.00	68.88



12.00" Radius, 2.00" Border, White on Green;  
 "EXIT", E Mod 2K 120% spacing; "354", E Mod 2K;

12.00" Radius, 2.00" Border, White on Green;  
 "119th St", E Mod 2K; "1/2 MILE", E Mod 2K;  
 Table of widths and spaces

26.63	E	7.38	1.75	X	8.63	2.50	I	2.00	2.25	T	7.38	15.00	3	12.13	3.13	5	12.13	2.13	4	14.00	15.00
17.00	I	4.75	4.13	I	4.88	3.75	9	13.00	3.00	t	8.38	5.13	h	10.50	16.00	S	13.00	3.25	t	8.25	17.00
31.38	1/2	20.88	15.00	M	9.38	2.75	I	2.00	2.88	L	7.38	1.50	E	7.50	31.38						

MODEL: D:\p\p\Design\KKS\Signs - Design\Contract-NO-62M84-46559-Sign-Structure-Design-157-from-L94-co-30-CADD\Contract-NO-62M84-46559-Sign-Structure-Design-157-from-L94-co-30-rev-06-10-2021\VERSION-2.dgn  
 FILE NAME: S:\P\Design\KKS\Signs - Design\Contract-NO-62M84-46559-Sign-Structure-Design-157-from-L94-co-30-CADD\Contract-NO-62M84-46559-Sign-Structure-Design-157-from-L94-co-30-rev-06-10-2021\VERSION-2.dgn

USER NAME = koby/kaka	DESIGNED - KK	REVISED -
PLOT SCALE = 40,0000 */ in.	DRAWN - KK	REVISED -
PLOT DATE = 6/10/2021	CHECKED - LP	REVISED -
	DATE - 06/20/2021	REVISED -

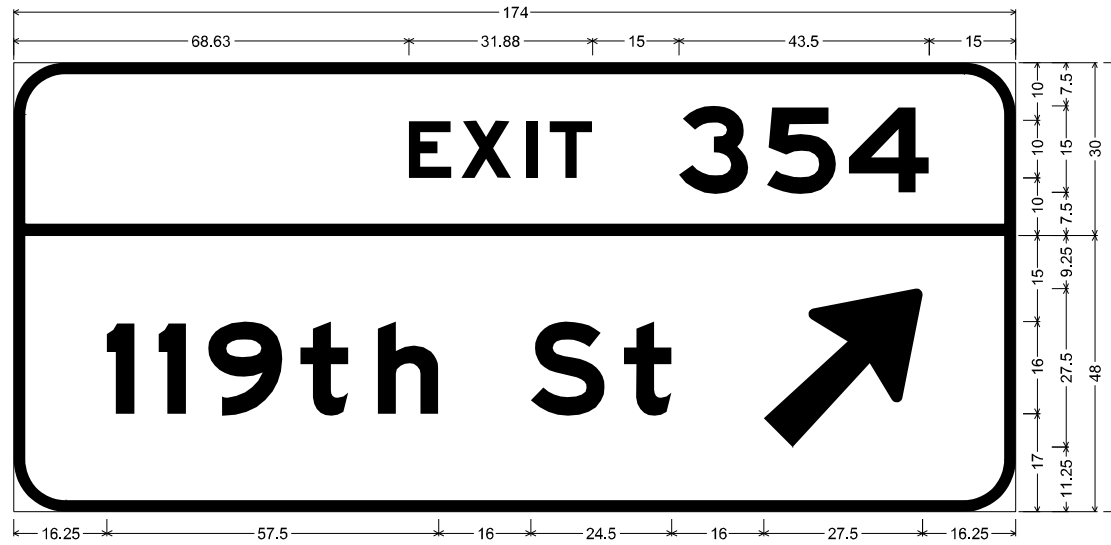
STATE OF ILLINOIS  
 DEPARTMENT OF TRANSPORTATION

SIGN PANEL DESIGN

SCALE: SHEET OF SHEETS STA. TO STA.

F.A. RTE.	SECTION	COUNTY	TOTAL SHEETS	SHEET NO.
	2020-212-R5&T	COOK	229	203
CONTRACT NO. 62M84				
ILLINOIS FED. AID PROJECT				

STRUCTURE NUMBER		1B0161057L354.8-000	
LOCATION		EXPRESSWAY	
SIZE (W x H)	EXIT PLAQUE	-	
	MAIN PANEL	14.5' X 6.5'	
MOUNTING / TYPE		OVERHEAD / BRIDGE	
MOUNTING LOC (L, M, R)			
SHEETING / COLOR	BACKGROUND	TYPE:	ZZ
		COLOR:	GREEN
		TYPE:	
	LEGEND / BORDER	COLOR:	
		TYPE:	ZZ
		COLOR:	WHITE



9.00" Radius, 2.00" Border, White on Green;  
 "EXIT", E Mod 2K 120% spacing; "354", E Mod 2K;

9.00" Radius, 2.00" Border, White on Green;  
 "119th St", E Mod 2K; Arrow 160 - 35.00" 45°;

Table of widths and spaces

68.63	E	7.38	1.75	X	8.63	2.50	I	2.00	2.25	T	7.38	15.00	3	12.13	3.13	5	12.13	2.13	4	14.00	15.00		
16.25	t	4.75	4.13	i	4.88	3.75	g	13.00	3.00	t	8.38	5.13	h	10.50	16.00	S	13.00	3.25	t	8.25	16.00	27.50	16.25

MODEL: D:\p\h  
 FILE NAME: S:\IPI\Design\KKS\Signs Design\Contract-NO-62M84-6559-Signs-Structure-Design\157-From-194-co-180-CADD\Contract-NO-62M84-6559-Signs-Structure-Design\157-From-194-co-180-rev-06-10-2021\VERSION-2.dgn

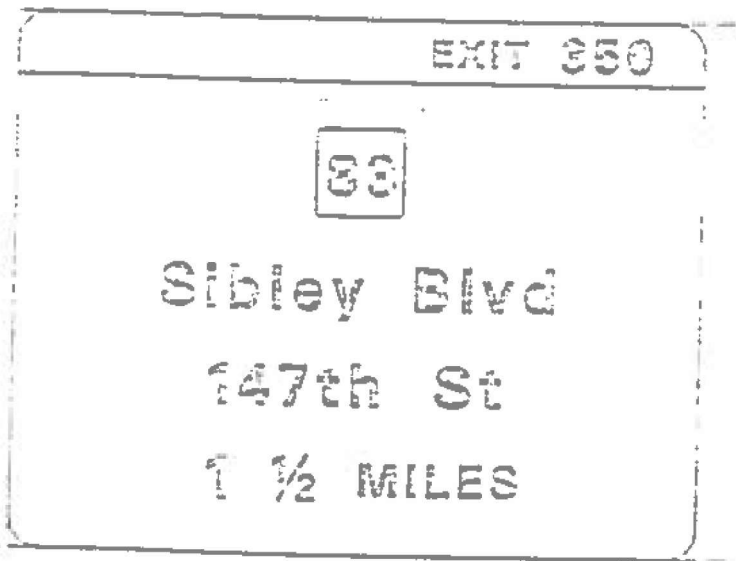
USER NAME = koby\kaka	DESIGNED - KK	REVISED -
	DRAWN - KK	REVISED -
PLOT SCALE = 40,0000 */ in.	CHECKED - LP	REVISED -
PLOT DATE = 6/10/2021	DATE - 06/20/2021	REVISED -

**STATE OF ILLINOIS  
 DEPARTMENT OF TRANSPORTATION**

**SIGN PANEL DESIGN**

SCALE: SHEET OF SHEETS STA. TO STA.

F.A. RTE.	SECTION	COUNTY	TOTAL SHEETS	SHEET NO.
	2020-212-R5&T	COOK	229	204
			CONTRACT NO. 62M84	
		ILLINOIS	FED. AID PROJECT	



Sign Number	1C0161057L351.80
Width X Height	15.5' X 15'
Border Width	2 Inches
Corner Radius	1/8 Inches
Mounting	Overhead
Background	Type: Reflective
	Color: Green
Legend/Border	Type: Reflective
	Color: White

SYMBOL	X	Y	WID	HT
101-11001A	75.00	100.00	36"	36"

C.O.  
ALL DIMENSIONS ARE IN INCHES

Y	LETTER POSITIONS (X)										HT
FONT											LEN
160	E	X	I	T							10
E	83.64	93.04	103.69	1107.47							31.17
157.5	3	5	0								15
Elim	123.81	145.63	1162.56								45.19
65	S	I	B	L	E	V	E	L	V	D	16/12
Elim	17.00	34.99	44.12	59.25	67.13	80.76	117.44	136.14	143.64	156.65	127.79
25	1	4	7	1	h	S	T				16/12
Elim	38.17	44.72	60.7	76.45	191.45	1125.70	1141.53				89.66
19	1										10
E	66.30										2.97
16.5	M	I	L	E	S						10
E	86.50	100.50	104.90	114.30	1123.70						32.84
14	1	/	2								15/10
E	54.25	66.30	73.33								15.00

SIGN 1C0161057L351.8-000

MODEL NUMBER  
FILE NAME: STILES

USER NAME = \$USERS	DESIGNED -	REVISED - 12/03/2021
	DRAWN -	REVISED -
PLOT SCALE = \$SCALES	CHECKED -	REVISED -
PLOT DATE = \$DATES	DATE -	REVISED -

STATE OF ILLINOIS  
DEPARTMENT OF TRANSPORTATION

SIGN PANEL DESIGN			
I-57			
SCALE:	SHEET	OF	SHEETS
	STA.		TO STA.

F.A. RTE.	SECTION	COUNTY	TOTAL SHEETS	SHEET NO.
57	2020-212-RS&T	COOK	229	205
JOB NO.	CONTRACT NO. 62M84			
ILLINOIS		FED. AID PROJECT		

STRUCTURE NUMBER		1B016I057L354.1-000	
LOCATION		EXPRESSWAY	
SIZE (W x H)	EXIT PLAQUE	-	
	MAIN PANEL	18' x 11'	
MOUNTING / TYPE		OVERHEAD / BRIDGE	
MOUNTING LOC (L, M, R)		RIGHT	
SHEETING / COLOR	BACKGROUND	TYPE:	ZZ
		COLOR:	GREEN
		TYPE:	
	LEGEND / BORDER	TYPE:	ZZ
		COLOR:	WHITE
		TYPE:	
COLOR:			



12.00" Radius, 2.00" Border, White on Green;  
 "EXIT", E Mod 2K 120% spacing; "353", E Mod 2K;  
 12.00" Radius, 2.00" Border, White on Green;  
 "127th St", E Mod 2K; "Burr Oak Ave", E Mod 2K; "3/4 MILE", E Mod 2K;  
 Table of widths and spaces

112.13	E	7.38	1.75	X	8.63	2.50	I	2.00	2.25	T	7.38	15.00	3	12.13	3.13	5	12.13	2.50	3	12.13	15.00									
60.50	1	4.88	4.00	2	12.88	2.75	7	13.00	3.00	t	8.25	5.13	h	10.63	16.00	S	13.00	3.13	t	8.38	50.50									
20.50	B	13.00	4.50	u	10.50	6.50	r	8.00	3.75	r	8.00	16.00	O	13.50	3.38	a	10.50	6.38	k	10.63	16.00	A	16.13	2.13	v	12.25	3.25	e	10.50	20.63
72.13	3/4	23.38	15.00	M	9.38	2.75	I	2.00	2.75	L	7.50	1.50	E	7.50	72.13															

MODEL: \\s01p1\Design\KKS\Signs - Design\Contract-NO-62M84-46559-Signs-Structure-Design\157-from-L94-co-180-CADD\Contract-NO-62M84-46559-Signs-Structure-Design-157-from-L94-co-180-rev-06-10-2021\VERSION-2.dgn  
 FILE NAME: \\s01p1\Design\KKS\Signs - Design\Contract-NO-62M84-46559-Signs-Structure-Design\157-from-L94-co-180-CADD\Contract-NO-62M84-46559-Signs-Structure-Design-157-from-L94-co-180-rev-06-10-2021\VERSION-2.dgn

USER NAME = koby/kaka	DESIGNED - KK	REVISED -
DRAWN - KK	REVISOR -	
PLOT SCALE = 40,0000 * / in.	CHECKED - LP	REVISOR -
PLOT DATE = 6/10/2021	DATE - 06/20/2021	REVISOR -

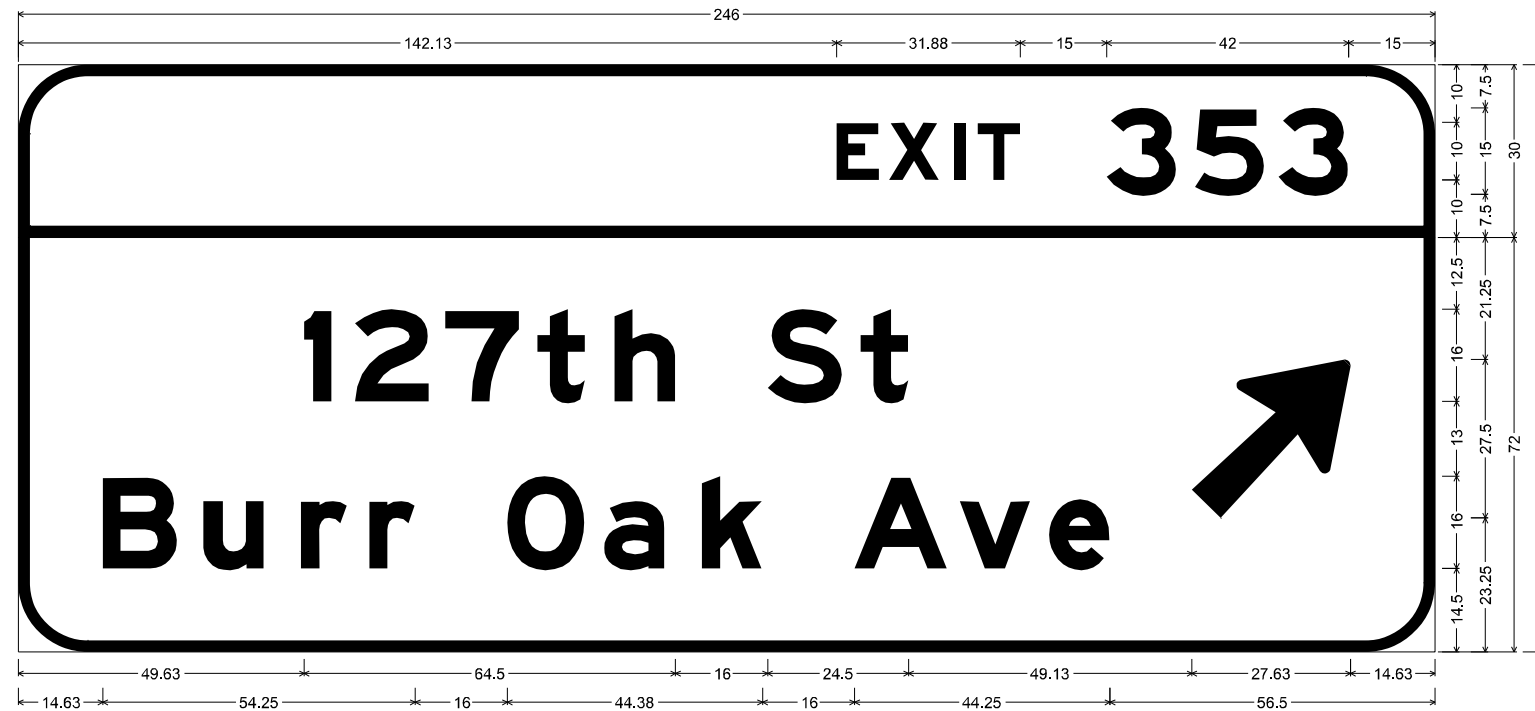
**STATE OF ILLINOIS**  
**DEPARTMENT OF TRANSPORTATION**

**SIGN PANEL DESIGN**

SCALE: SHEET OF SHEETS STA. TO STA.

F.A. RTE.	SECTION	COUNTY	TOTAL SHEETS	SHEET NO.
	2020-212-R5&T	COOK	229	206
CONTRACT NO. 62M84				
ILLINOIS FED. AID PROJECT				

STRUCTURE NUMBER		1C0161057L353.6-000	
LOCATION		EXPRESSWAY	
SIZE (W x H)	EXIT PLAQUE	-	
	MAIN PANEL	20.5' X 8.5'	
MOUNTING / TYPE		OVERHEAD / CANTILEVER	
MOUNTING LOC (L, M, R)			
SHEETING / COLOR	BACKGROUND	TYPE:	ZZ
		COLOR:	GREEN
		TYPE:	
	LEGEND / BORDER	COLOR:	
		TYPE:	ZZ
		COLOR:	WHITE



12.00" Radius, 2.00" Border, White on Green;  
 "EXIT", E Mod 2K 120% spacing; "353", E Mod 2K;  
 12.00" Radius, 2.00" Border, White on Green;  
 "127th St", E Mod 2K; "Burr Oak Ave", E Mod 2K; Arrow 160 - 35.00" 45";  
 Table of widths and spaces

142.13	E	7.38	1.75	X	8.63	2.50	I	2.00	2.25	T	7.38	15.00	3	12.13	3.13	5	12.13	2.50	3	12.13	15.00									
49.63	I	4.75	4.00	2	13.00	2.75	7	13.00	3.00	t	8.25	5.13	h	10.63	16.00	S	12.88	3.25	t	8.38	49.13	27.50	14.75							
14.63	B	13.00	4.50	u	10.50	6.50	r	8.00	3.75	r	8.00	16.00	o	13.50	3.38	a	10.50	6.38	k	10.63	16.00	A	16.13	2.13	v	12.25	3.25	e	10.50	56.50

MODEL: D:\p\p\Design\KKS\Signs Design\Contract-NO-62M84-46559-Sign-Structure-Design-157-from-194-co-130-CADD\Contract-NO-62M84-46559-Sign-Structure-Design-157-from-194-co-130-rev-06-10-2021\VERSION-2.dgn  
 FILE NAME: S:\P\Design\KKS\Signs Design\Contract-NO-62M84-46559-Sign-Structure-Design-157-from-194-co-130-CADD\Contract-NO-62M84-46559-Sign-Structure-Design-157-from-194-co-130-rev-06-10-2021\VERSION-2.dgn

USER NAME = koby\kaka	DESIGNED - KK	REVISED -
DRAWN - KK	REVISOR -	
PLOT SCALE = 40,0000 * / in.	CHECKED - LP	REVISED -
PLOT DATE = 6/10/2021	DATE - 06/20/2021	REVISED -

**STATE OF ILLINOIS**  
**DEPARTMENT OF TRANSPORTATION**

<b>SIGN PANEL DESIGN</b>			
SCALE:	SHEET	OF	SHEETS
STA.	TO	STA.	TO

F.A. RTE.	SECTION	COUNTY	TOTAL SHEETS	SHEET NO.
	2020-212-R5&T	COOK	229	207
CONTRACT NO. 62M84				
ILLINOIS FED. AID PROJECT				

STRUCTURE NUMBER		1G016I057L347.3-000	
LOCATION		EXPRESSWAY	
SIZE (W x H)	EXIT PLAQUE	-	
	MAIN PANEL	14' X 10'	
MOUNTING / TYPE		GROUND	
MOUNTING LOC (L, M, R)		RIGHT	
SHEETING / COLOR	BACKGROUND	TYPE:	ZZ
		COLOR:	GREEN
		TYPE:	
	LEGEND / BORDER	COLOR:	
		TYPE:	ZZ
		COLOR:	WHITE



12.00" Radius, 2.00" Border, White on Green;  
 "TO", E Mod 2K; "Cicero Ave", E Mod 2K; "EXIT 346B", E Mod 2K;

Table of widths and spaces

49.88	T	7.38	1.50	O	8.38	15.00	36.00	49.88																			
15.63	C	12.88	4.50	i	3.25	5.00	c	10.50	3.50	e	10.63	4.88	r	8.00	2.38	o	10.88	16.00	A	16.25	2.00	v	12.38	3.13	e	10.63	15.63
31.38	E	7.38	1.38	X	8.63	2.13	I	2.00	1.88	T	7.38	15.00	3	12.13	1.88	4	14.00	3.63	6	12.13	3.63	B	12.13	31.25			

MODEL: D:\p\p\Design\KKS\Signs Design\Contract-NO-62M84-48559-Sign-Structure-Design-157-from-194-co-180-CADD\Contract-NO-62M84-48559-Sign-Structure-Design-157-from-194-co-180-rev-06-10-2021\VERSION2.dgn  
 FILE NAME: S:\P\Design\KKS\Signs Design\Contract-NO-62M84-48559-Sign-Structure-Design-157-from-194-co-180-CADD\Contract-NO-62M84-48559-Sign-Structure-Design-157-from-194-co-180-rev-06-10-2021\VERSION2.dgn

USER NAME = koby\kaka	DESIGNED - KK	REVISED -
	DRAWN - KK	REVISED -
PLOT SCALE = 40,0000 * / in.	CHECKED - LP	REVISED -
PLOT DATE = 6/10/2021	DATE - 06/20/2021	REVISED -

**STATE OF ILLINOIS  
DEPARTMENT OF TRANSPORTATION**

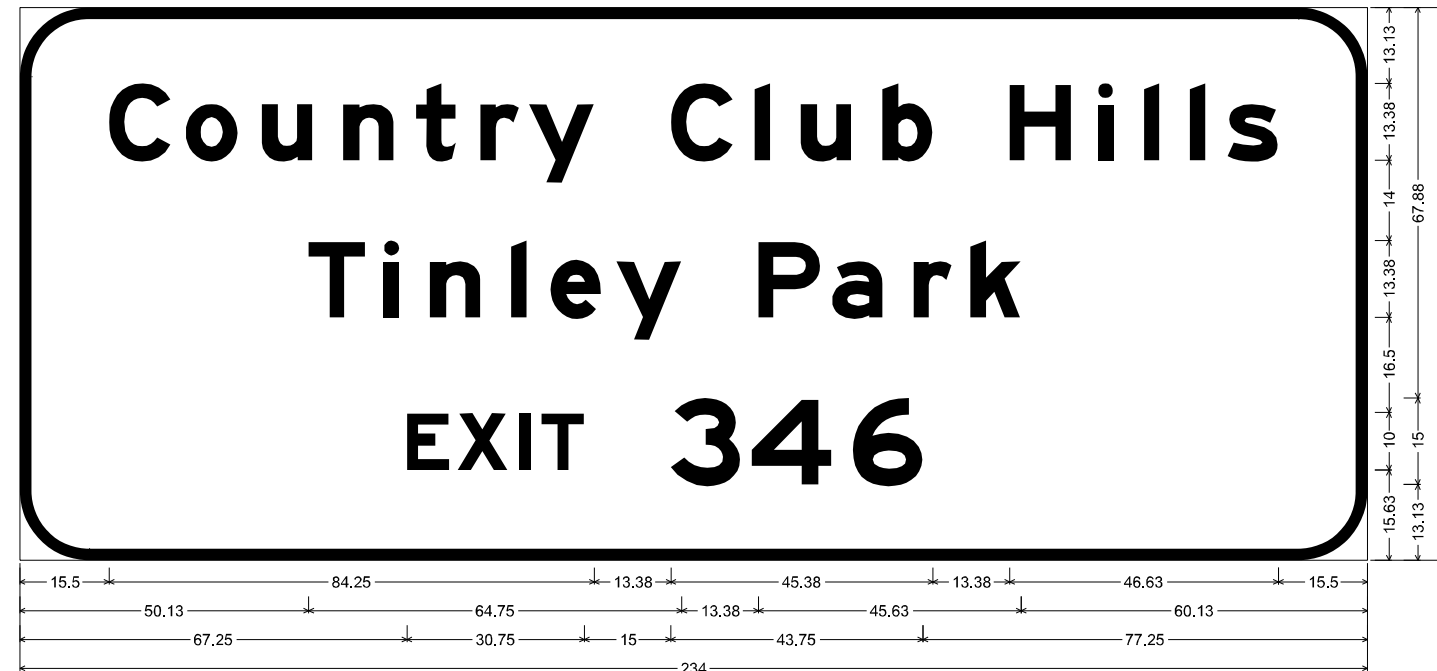
**SIGN PANEL DESIGN**

SCALE: SHEET OF SHEETS STA. TO STA.

F.A. RTE.	SECTION	COUNTY	TOTAL SHEETS	SHEET NO.
	2020-212-R5&T	COOK	229	208
			CONTRACT NO. 62M84	
		ILLINOIS FED. AID PROJECT		



STRUCTURE NUMBER		1G0161057L347.3-001	
LOCATION		EXPRESSWAY	
SIZE (W x H)	EXIT PLAQUE	-	
	MAIN PANEL	19.5' X 8'	
MOUNTING / TYPE		GROUND	
MOUNTING LOC (L, M, R)		RIGHT	
SHEETING / COLOR	BACKGROUND	TYPE:	ZZ
		COLOR:	GREEN
		TYPE:	
	LEGEND / BORDER	COLOR:	
		TYPE:	ZZ
		COLOR:	WHITE



12.00" Radius, 2.00" Border, White on Green;  
 "Country Club Hills", E Mod 2K; "Tinley Park", E Mod 2K; "EXIT 346", E Mod 2K;  
 Table of widths and spaces

15.50	C	10.75	2.50	o	9.13	4.13	u	8.75	5.38	n	8.75	3.88	t	7.00	4.25	r	6.63	1.75	y	11.38	13.25	C	10.88	3.75	i	2.63	5.25	u	8.88	5.38	b	8.75
13.38	H	10.75	4.50	i	2.63	5.38	i	2.63	5.38	i	2.63	3.88	s	8.88	15.38																	
50.13	T	9.88	3.25	i	2.63	5.25	n	8.88	5.38	i	2.63	4.13	e	8.75	2.75	y	11.25	13.38	P	10.75	2.00	a	8.88	5.25	r	6.75	3.13	k	8.88	60.13		
67.25	E	7.38	1.38	X	8.75	2.00	i	2.00	1.88	T	7.38	15.00	3	12.13	2.00	4	13.88	3.63	6	12.13	77.25											

MODEL: D:\p\p\Design\KKS\Signs Design\Contract-NO-62M84-46559-Sign-Structure-Design-157-from-L94-co-130-CADD\Contract-157-from-L94-co-130-rev-06-10-2021\VERSION-2.dgn  
 FILE NAME: S:\P\Design\KKS\Signs Design\Contract-NO-62M84-46559-Sign-Structure-Design-157-from-L94-co-130-CADD\Contract-157-from-L94-co-130-rev-06-10-2021\VERSION-2.dgn

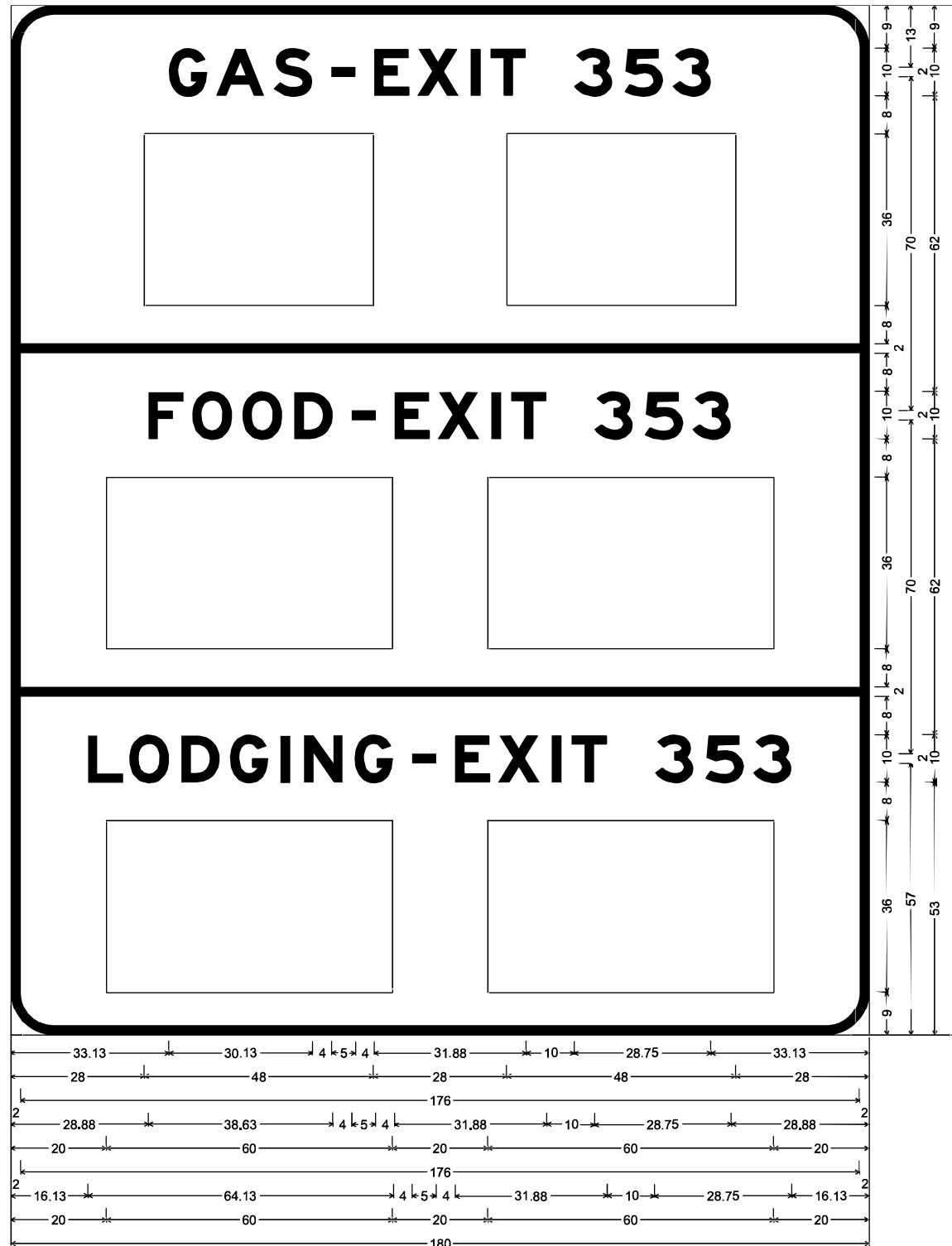
USER NAME = koby\kaka	DESIGNED - KK	REVISED -
DRAWN - KK	REVISOR -	
PLOT SCALE = 40,0000 * / in.	CHECKED - LP	REVISOR -
PLOT DATE = 6/10/2021	DATE - 06/20/2021	REVISOR -

**STATE OF ILLINOIS**  
**DEPARTMENT OF TRANSPORTATION**

<b>SIGN PANEL DESIGN</b>				
SCALE:	SHEET	OF	SHEETS	STA. TO STA.

F.A. RTE.	SECTION	COUNTY	TOTAL SHEETS	SHEET NO.
	2020-212-R5&T	COOK	229	209
CONTRACT NO. 62M84				
ILLINOIS FED. AID PROJECT				

STRUCTURE NUMBER		1G0161057R351.0-000	
LOCATION		EXPRESSWAY	
SIZE (W x H)	EXIT PLAQUE	-	
	MAIN PANEL	15' X 18'	
MOUNTING / TYPE		GROUND	
MOUNTING LOC (L, M, R)		RIGHT	
SHEETING / COLOR	BACKGROUND	TYPE:	ZZ
		COLOR:	BLUE
		TYPE:	
	LEGEND / BORDER	COLOR:	
		TYPE:	ZZ
		COLOR:	WHITE



9.00" Radius, 2.00" Border, White on Blue;  
 "GAS", E Mod 2K specified length; "EXIT 353", E Mod 2K 120% spacing; "FOOD", E Mod 2K 105% spacing;  
 "EXIT 353", E Mod 2K 120% spacing; "LODGING", E Mod 2K 105% spacing; "EXIT 353", E Mod 2K 120% spacing;

Table of widths and spaces

33.13	G	8.13	1.88	A	10.00	2.00	S	8.13	4.00	□	5.00	4.00	E	7.38	1.63	X	8.75	2.50	I	2.00	2.13	T	7.50	10.00	3	8.00	2.63	5	8.00	2.00	3	8.00	33.25			
28.00	□	48.00	28.00	□	48.00	28.00																														
2.00	□	176.00	2.00																																	
28.88	F	7.38	1.75	O	8.38	2.13	O	8.38	2.50	D	8.13	4.00	□	5.00	4.00	E	7.38	1.75	X	8.63	2.50	I	2.00	2.25	T	7.38	10.00	3	8.13	2.50	5	8.13	1.88	3	8.13	28.75
20.00	□	60.00	20.00	□	60.00	20.00																														
2.00	□	176.00	2.00																																	
16.13	L	7.50	1.25	O	8.38	2.50	D	8.13	2.00	G	8.13	2.50	I	2.00	3.00	N	8.13	2.50	G	8.13	4.00	□	5.00	4.00	E	7.38	1.63	X	8.75	2.50	I	2.00	2.13	T	7.38	
		10.00	3	8.13	2.50	5	8.13	1.88	3	8.13	16.13																									
20.00	□	60.00	20.00	□	60.00	20.00																														

MODEL: Default  
 FILE: M:\MIS\3\WIP\Design\KKS\Signs Design\Contract-NO-62M84-46558-Sign-Structure-Design-157-from-144-co-800\CD\Contract-NO-62M84-46558-Sign-Structure-Design-157-from-144-to-180-rev-06-10-2021\VERSION-2.dgn

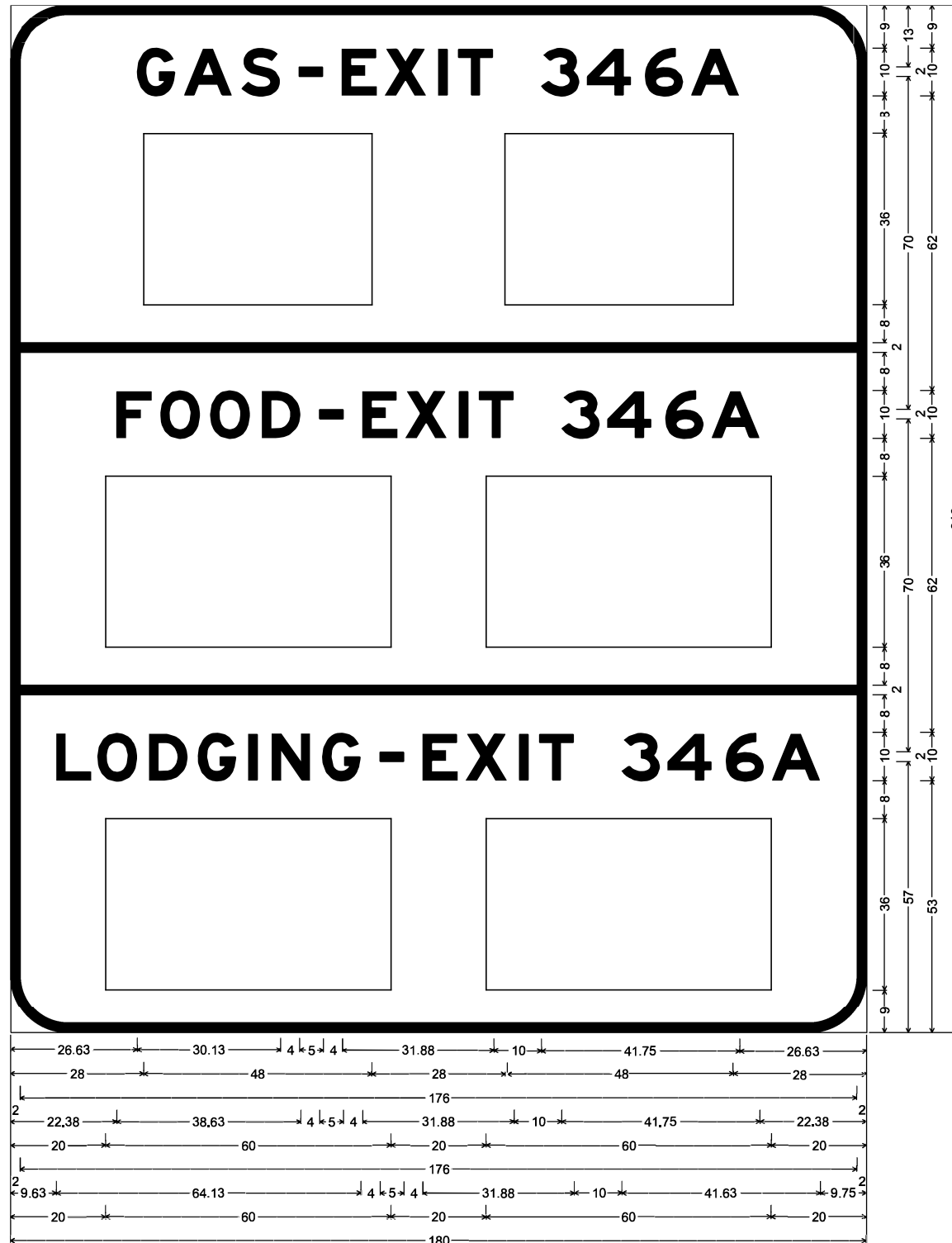
USER NAME = koby/kaka	DESIGNED - KK	REVISED -
DRAWN - KK	REVISOR -	
PLOT SCALE = 40.0000' / in.	CHECKED - LP	REVISOR -
PLOT DATE = 6/10/2021	DATE - 06/20/2021	REVISOR -

**STATE OF ILLINOIS**  
**DEPARTMENT OF TRANSPORTATION**

**SIGN PANEL DESIGN**  
 SCALE: SHEET OF SHEETS STA. TO STA.

F.A. RTE.	SECTION	COUNTY	TOTAL SHEETS	SHEET NO.
	2020-212-R5&T	COOK	229	210
			CONTRACT NO. 62M84	
ILLINOIS FED. AID PROJECT				

STRUCTURE NUMBER		1G0161057R345.4-000	
LOCATION		EXPRESSWAY	
SIZE (W x H)	EXIT PLAQUE	-	
	MAIN PANEL	15' X 18'	
MOUNTING / TYPE		GROUND	
MOUNTING LOC (L, M, R)		RIGHT	
SHEETING / COLOR	BACKGROUND	TYPE:	ZZ
		COLOR:	BLUE
		TYPE:	
	LEGEND / BORDER	TYPE:	ZZ
		COLOR:	WHITE
		TYPE:	



9200" Redies, 2200" Border, White on Blue;  
 "GAS", E Mod 2K specified length; "EXIT 346A", E Mod 2K 120% spacing; "FOOD", E Mod 2K 105% spacing;  
 "EXIT 346A", E Mod 2K 120% spacing; "LODGING", E Mod 2K 105% spacing; "EXIT 346A", E Mod 2K 120% spacing;  
 Table of widths and spaces

26.63	G	8.13	1.88	A	10.00	2.00	S	8.13	4.00	□	5.00	4.00	E	7.38	1.75	X	8.63	2.50	I	2.00	2.25	T	7.38												
		3		4		6		A																											
10.00		8.00	1.63	9.25	2.88	8.13	1.75	10.00	26.75																										
28.00	□	48.00	28.00	48.00	28.00																														
2.00		176.00	2.00																																
22.38	F	7.38	1.75	O	8.38	2.13	O	8.38	2.63	D	8.00	4.00	□	5.00	4.00	E	7.38	1.75	X	8.63	2.63	I	2.00	2.13	T	7.38									
		3		4		6		A																											
10.00		8.13	1.50	9.38	2.88	8.00	1.75	10.13	22.25																										
20.00	□	60.00	20.00	60.00	20.00																														
2.00		176.00	2.00																																
9.63	L	7.50	1.25	O	8.38	2.50	D	8.13	2.13	G	8.00	2.50	I	2.00	3.00	N	8.13	2.50	G	8.13	4.00	□	5.00	4.00	E	7.38	1.63	X	8.75	2.50	I	2.00	2.13	T	7.38
		3		4		6		A																											
10.00		8.13	1.63	9.25	2.88	8.13	1.63	10.13	9.63																										
20.00	□	60.00	20.00	60.00	20.00																														

MODEL: Default  
 FILE: I:\MMS\_S\WP\Design\KKS\Signs Design\Contract-NO-62M84-46558-Sign-Structure-Design-157-from-144-co-800\CD\Contract-NO-62M84-46558-Sign-Structure-Design-157-from-144-to-180-rev-06-10-2021\VERSION-2.dgn

USER NAME = koby/kaka	DESIGNED - KK	REVISED -
DRAWN - KK	CHECKED - LP	REVISED -
PLOT SCALE = 40.0000 "/in.	DATE - 06/20/2021	REVISED -
PLOT DATE = 6/10/2021		

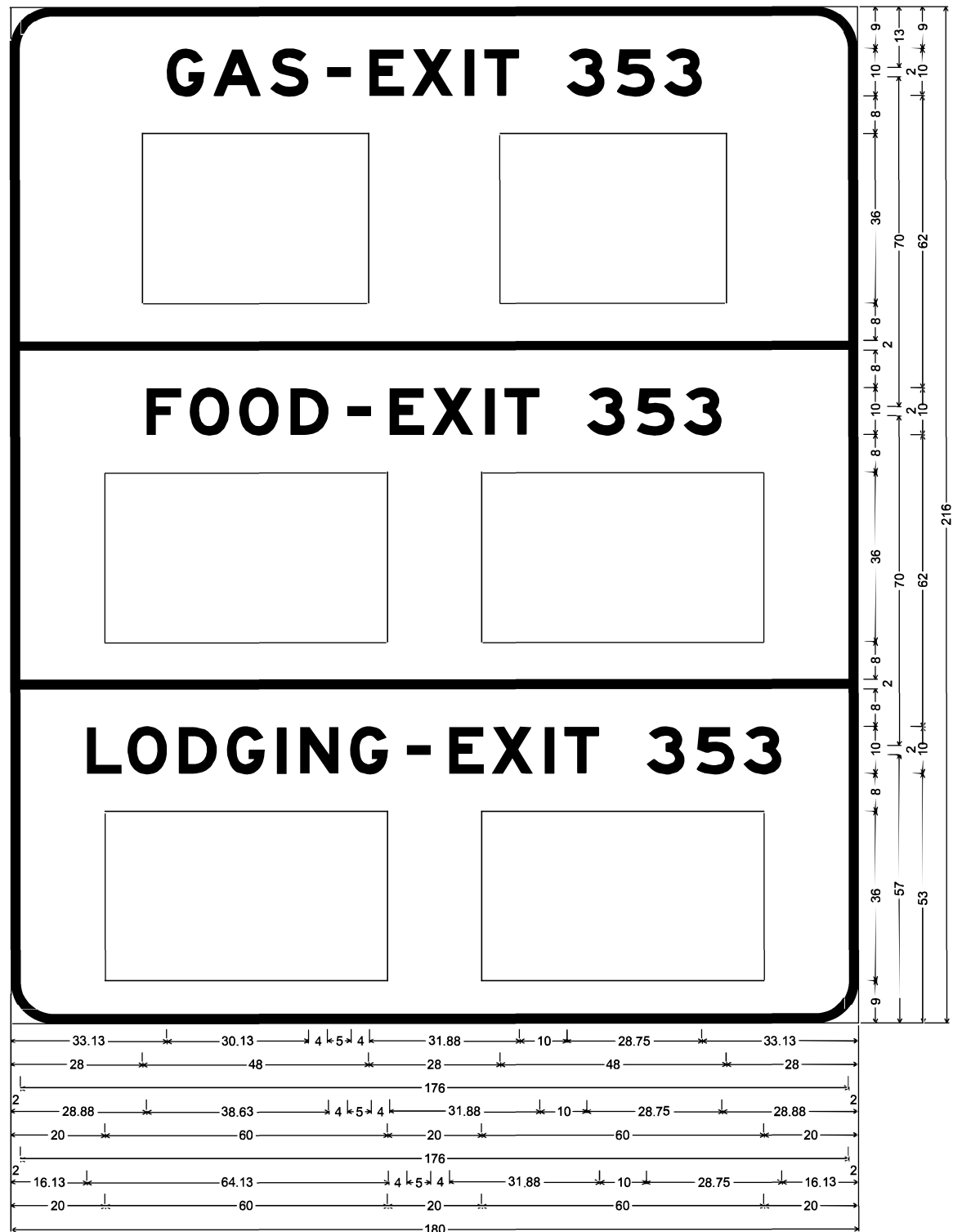
STATE OF ILLINOIS  
 DEPARTMENT OF TRANSPORTATION

SIGN PANEL DESIGN

SCALE: SHEET OF SHEETS STA. TO STA.

F.A. RTE.	SECTION	COUNTY	TOTAL SHEETS	SHEET NO.
	2020-212-R5&T	COOK	229	211
ILLINOIS FED. AID PROJECT			CONTRACT NO. 62M84	

STRUCTURE NUMBER		1G0161057L353.6-000	
LOCATION		EXPRESSWAY	
SIZE (W x H)	EXIT PLAQUE	-	
	MAIN PANEL	15' X 18'	
MOUNTING / TYPE		GROUND	
MOUNTING LOC (L, M, R)		RIGHT	
SHEETING / COLOR	BACKGROUND	TYPE:	ZZ
		COLOR:	BLUE
		TYPE:	
	LEGEND / BORDER	COLOR:	
		TYPE:	ZZ
		COLOR:	WHITE



9.00" Radius, 2.00" Border, White on Blue;  
 "GAS", E Mod 2K specified length; "EXIT 353", E Mod 2K 120% spacing; "FOOD", E Mod 2K 105% spacing;  
 "EXIT 353", E Mod 2K 120% spacing; "LODGING", E Mod 2K 105% spacing; "EXIT 353", E Mod 2K 120% spacing;  
 Table of widths and spaces

33.13	G	8.13	1.88	A	10.00	2.00	S	8.13	4.00	5.00	4.00	E	7.38	1.63	X	8.75	2.50	I	2.00	2.13	T	7.50	10.00	3	8.00	2.63	5	8.00	2.00	3	8.00	33.25			
28.00		48.00	28.00		48.00	28.00																													
2.00		176.00	2.00																																
28.88	F	7.38	1.75	O	8.38	2.13	O	8.38	2.50	D	8.13	4.00	5.00	4.00	E	7.38	1.75	X	8.63	2.63	I	1.88	2.25	T	7.38	10.00	3	8.13	2.50	5	8.13	1.88	3	8.13	28.75
20.00		60.00	20.00		60.00	20.00																													
2.00		176.00	2.00																																
16.13	L	7.50	1.25	O	8.38	2.50	D	8.13	2.00	G	8.13	2.50	I	2.00	3.00	N	8.13	2.50	G	8.13	4.00	5.00	4.00	E	7.38	1.63	X	8.75	2.50	I	2.00	2.13	T	7.38	
		10.00	3	8.13	2.50	5	8.13	1.88	3	8.13	16.13																								
20.00		60.00	20.00		60.00	20.00																													

MODEL: Default  
 FILE NAME: S:\VP\Design\KKS\Signs Design\Contract-NO-62M84-662558\Sign-Structure-Design-1571-from-1491-to-1800\CADD\Contract-NO-62M84-662558\Sign-Structure-Design-1571-from-1941-to-1800-rev-06-10-2021\VERSION-2.dgn

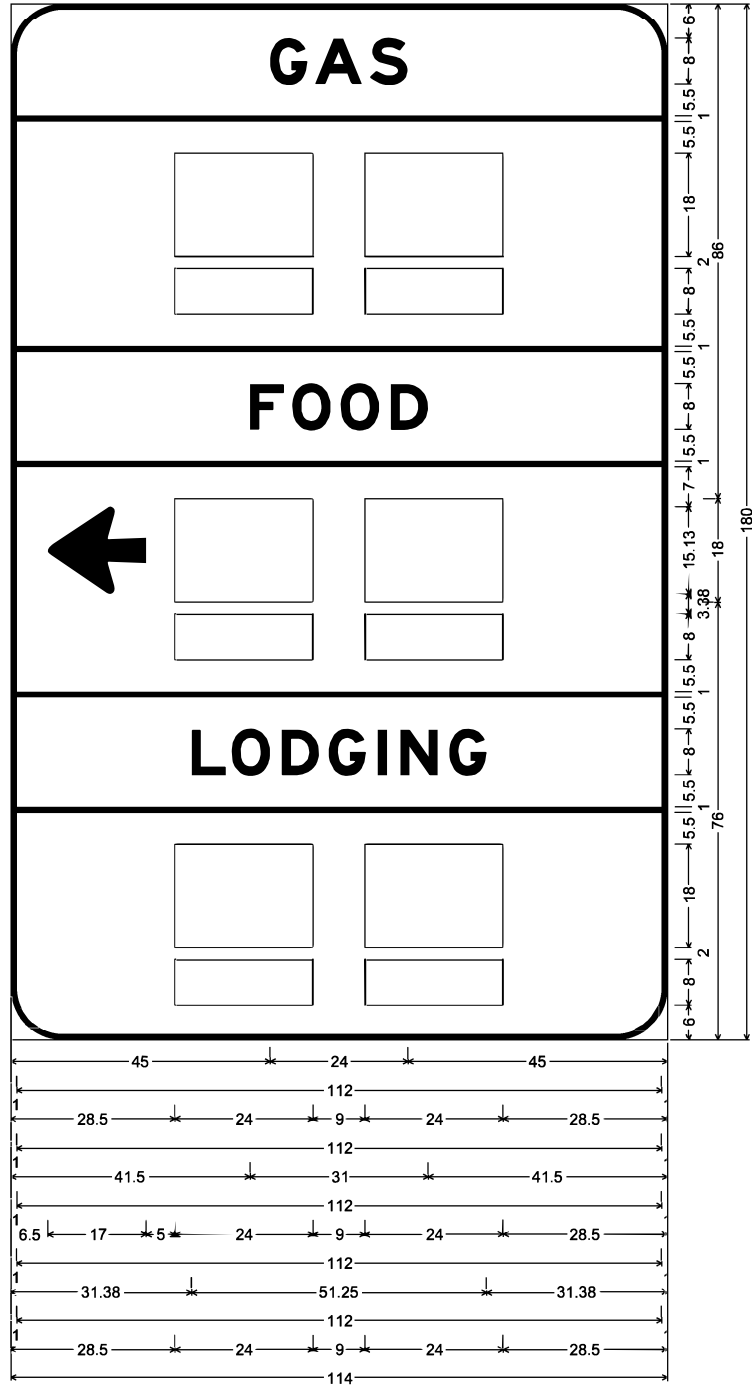
USER NAME = koby/kaka	DESIGNED - KK	REVISED -
DRAWN - KK	REVISIONS -	
PLOT SCALE = 40.0000" / in.	CHECKED - LP	REVISED -
PLOT DATE = 6/10/2021	DATE - 06/20/2021	REVISED -

**STATE OF ILLINOIS**  
**DEPARTMENT OF TRANSPORTATION**

**SIGN PANEL DESIGN**  
 SCALE: SHEET OF SHEETS STA. TO STA.

F.A. RTE.	SECTION	COUNTY	TOTAL SHEETS	SHEET NO.
	2020-212-R5&T	COOK	229	212
CONTRACT NO. 62M84				
ILLINOIS FED. AID PROJECT				

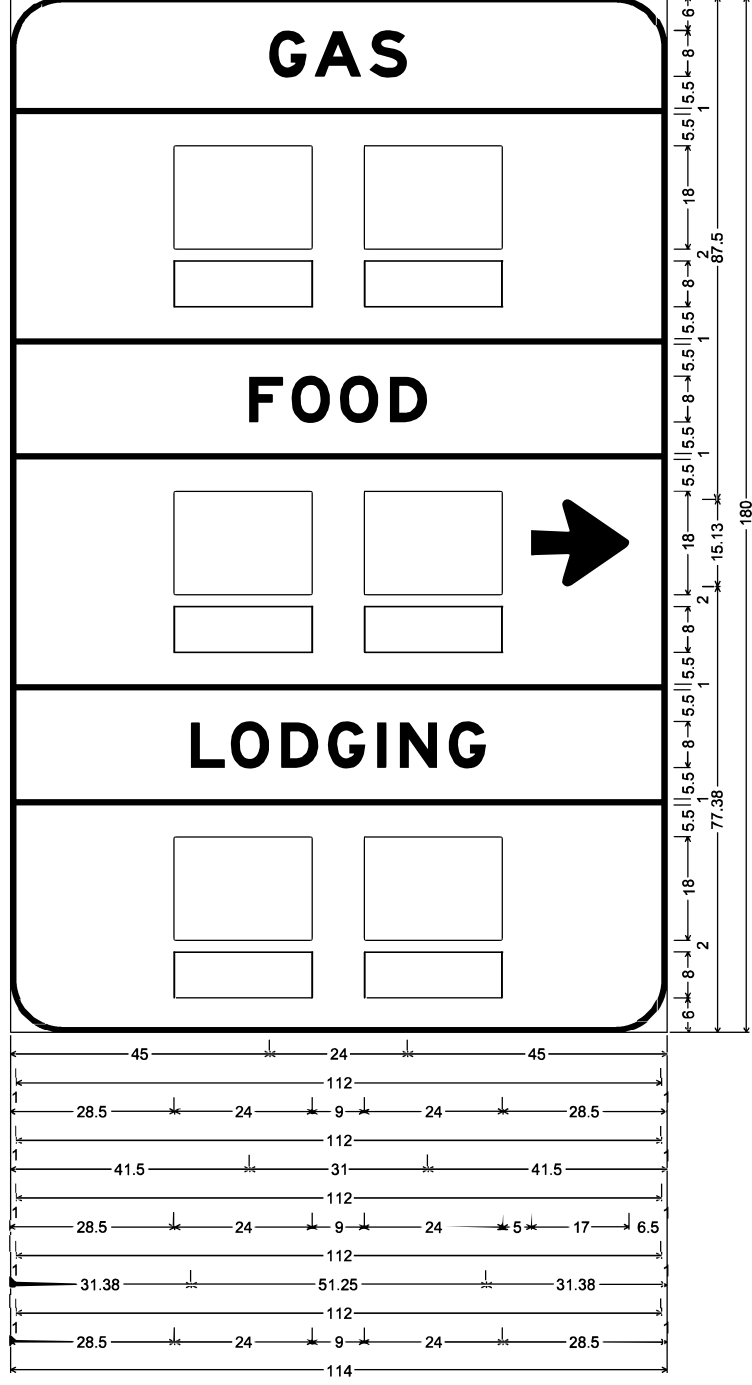
MODEL: Default  
 FILE: I:\M&E\3\WIP\Design\KKS\Signs Design\Contract-NO-62M84-46559-Sign-Structure-Design-157-from-144-co-80\CD\Contract-NO-62M84-46559-Sign-Structure-Design-157-from-144-to-80\CD\Contract-NO-62M84-46559-Sign-Structure-Design-157-from-144-to-80-rev-06-10-2021\VERSION2.dgn



STRUCTURE NUMBER		1G0161057L353.6-001	
LOCATION		EXPRESSWAY	
SIZE (W x H)	EXIT PLAQUE	-	
	MAIN PANEL	9.5' X 15'	
MOUNTING / TYPE		GROUND	
MOUNTING LOC (L, M, R)		RIGHT	
SHEETING / COLOR	BACKGROUND	TYPE:	ZZ
		COLOR:	BLUE
		TYPE:	
	LEGEND / BORDER	TYPE:	ZZ
		COLOR:	WHITE
		TYPE:	

9.00" Radius, 1.00" Border, White on Blue;  
 "GAS", E Mod 2K 125% spacing; "FOOD", E Mod 2K 105% spacing;  
 Arrow 80 - 17.00" 180"; "LODGING", E Mod 2K 105% spacing;  
 Table of widths and spaces

45.00	G	6.50	1.38	A	8.13	1.50	S	6.50	45.00													
1.00		112.00	1.00																			
28.50		24.00	9.00		24.00	28.50																
28.50		24.00	9.00		24.00	28.50																
1.00		112.00	1.00																			
41.50	F	6.00	1.38	O	6.75	1.63	O	6.75	2.00	D	6.50	41.50										
1.00		112.00	1.00																			
6.50		17.00	5.00		24.00	9.00		24.00	28.50													
28.50		24.00	9.00		24.00	28.50																
31.38	L	5.88	1.00	O	6.75	2.00	D	6.50	1.75	G	6.38	2.00	I	1.63	2.38	N	6.50	2.00	G	6.50	31.38	
1.00		112.00	1.00																			
28.50		24.00	9.00		24.00	28.50																
28.50		24.00	9.00		24.00	28.50																



STRUCTURE NUMBER		1G0161057RXXX.X-XXX	
LOCATION		EXPRESSWAY	
SIZE (W x H)	EXIT PLAQUE	-	
	MAIN PANEL	9.5' X 15'	
MOUNTING / TYPE		GROUND	
MOUNTING LOC (L, M, R)		RIGHT	
SHEETING / COLOR	BACKGROUND	TYPE:	ZZ
		COLOR:	BLUE
		TYPE:	
	LEGEND / BORDER	TYPE:	ZZ
		COLOR:	WHITE
		TYPE:	

9.00" Radius, 1.00" Border, White on Blue;  
 "GAS", E Mod 2K 125% spacing; "FOOD", E Mod 2K 105% spacing;  
 Arrow 80 - 17.00" 0"; "LODGING", E Mod 2K 105% spacing;  
 Table of widths and spaces

45.00	G	6.50	1.38	A	8.13	1.50	S	6.50	45.00													
1.00		112.00	1.00																			
28.50		24.00	9.00		24.00	28.50																
28.50		24.00	9.00		24.00	28.50																
1.00		112.00	1.00																			
41.50	F	6.00	1.38	O	6.75	1.63	O	6.75	2.00	D	6.50	41.50										
1.00		112.00	1.00																			
28.50		24.00	9.00		24.00	5.00		17.00	6.50													
28.50		24.00	9.00		24.00	28.50																
1.00		112.00	1.00																			
31.38	L	5.88	1.00	O	6.75	2.00	D	6.50	1.75	G	6.38	2.00	I	1.63	2.38	N	6.50	2.00	G	6.50	31.38	
1.00		112.00	1.00																			
28.50		24.00	9.00		24.00	28.50																
28.50		24.00	9.00		24.00	28.50																

USER NAME = koby/kaka	DESIGNED - KK	REVISED -
DRAWN - KK	REVISIONS -	
PLOT SCALE = 40.0000' / in.	CHECKED - LP	REVISIONS -
PLOT DATE = 6/10/2021	DATE - 06/20/2021	REVISIONS -

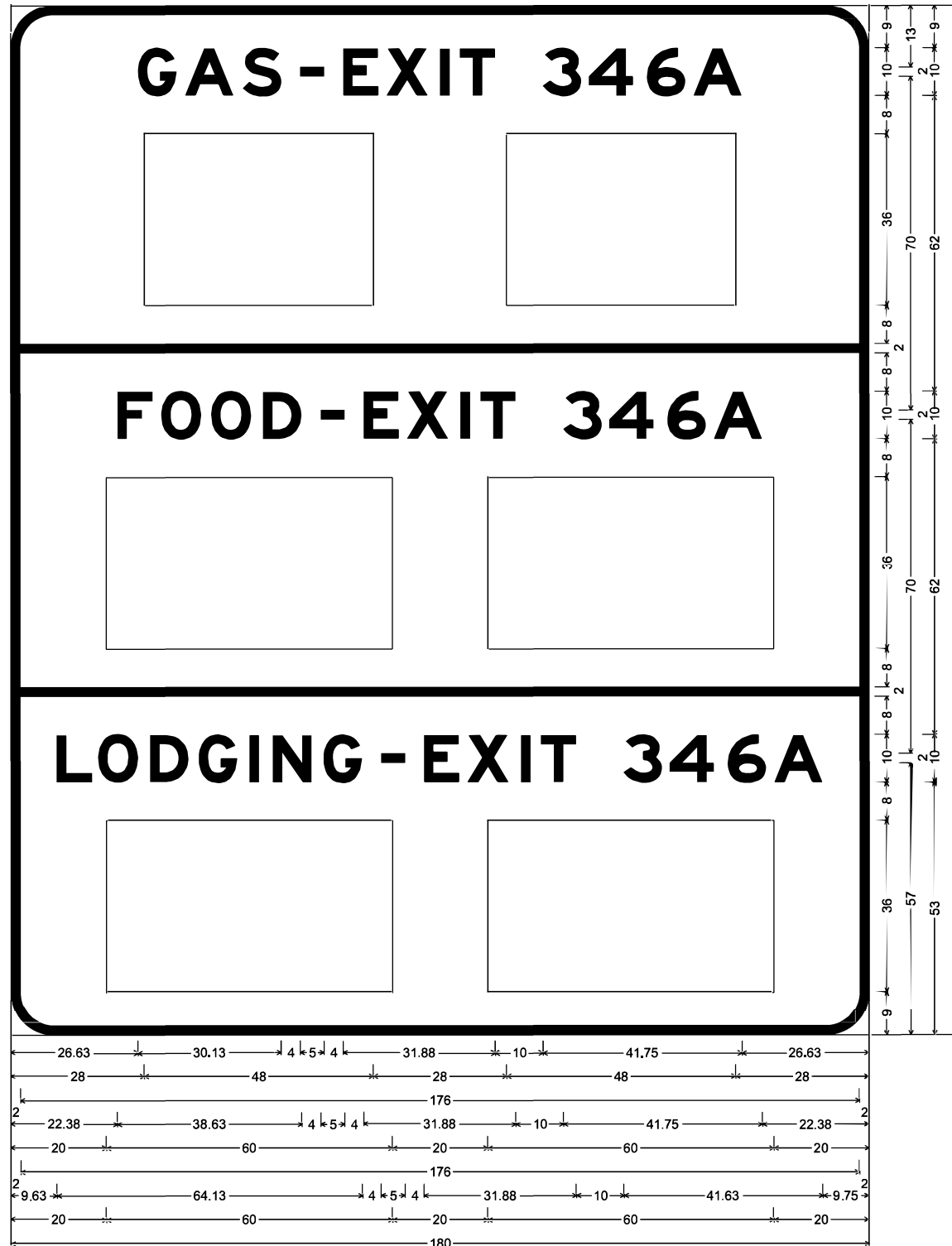
**STATE OF ILLINOIS**  
**DEPARTMENT OF TRANSPORTATION**

**SIGN PANEL DESIGN**

SCALE: SHEET OF SHEETS STA. TO STA.

F.A. RTE.	SECTION	COUNTY	TOTAL SHEETS	SHEET NO.
	2020-212-R5&T	COOK	229	213
CONTRACT NO. 62M84				
ILLINOIS / FED. AID PROJECT				

STRUCTURE NUMBER		1G0161057L347.6-000	
LOCATION		EXPRESSWAY	
SIZE (W x H)	EXIT PLAQUE	-	
	MAIN PANEL	15' X 18'	
MOUNTING / TYPE		GROUND	
MOUNTING LOC (L, M, R)		RIGHT	
SHEETING / COLOR	BACKGROUND	TYPE:	ZZ
		COLOR:	BLUE
		TYPE:	
	LEGEND / BORDER	TYPE:	ZZ
		COLOR:	WHITE
		COLOR:	



9.00" Radius, 2.00" Border, White on Blue;  
 "GAS", E Mod 2K specified length; "EXIT 346A", E Mod 2K 120% spacing; "FOOD", E Mod 2K 105% spacing;  
 "EXIT 346A", E Mod 2K 120% spacing; "LODGING", E Mod 2K 105% spacing; "EXIT 346A", E Mod 2K 120% spacing;  
 Table of widths and spaces

26.63	G	8.13	1.88	A	10.00	2.00	S	8.13	4.00	□	5.00	4.00	E	7.38	1.75	X	8.63	2.50	I	2.00	2.25	T	7.38											
			3		4		6		A																									
10.00	8.00	1.63	9.25	2.88	8.13	1.75	10.00	26.75																										
28.00	□	48.00	28.00	□	48.00	28.00																												
2.00	176.00	2.00																																
22.38	F	7.38	1.75	O	8.38	2.13	O	8.38	2.50	D	8.13	4.00	□	5.00	4.00	E	7.38	1.75	X	8.63	2.63	I	2.00	2.13	T	7.38								
			3		4		6		A																									
10.00	8.13	1.50	9.38	2.88	8.00	1.75	10.13	22.25																										
20.00	□	60.00	20.00	□	60.00	20.00																												
2.00	176.00	2.00																																
9.63	L	7.50	1.25	O	8.38	2.50	D	8.13	2.13	G	8.00	2.50	2.00	3.00	N	8.13	2.50	G	8.13	4.00	□	5.00	4.00	E	7.38	1.63	X	8.75	2.50	I	2.00	2.13	T	7.38
			3		4		6		A																									
10.00	8.13	1.63	9.25	2.88	8.13	1.63	10.13	9.63																										
20.00	□	60.00	20.00	□	60.00	20.00																												

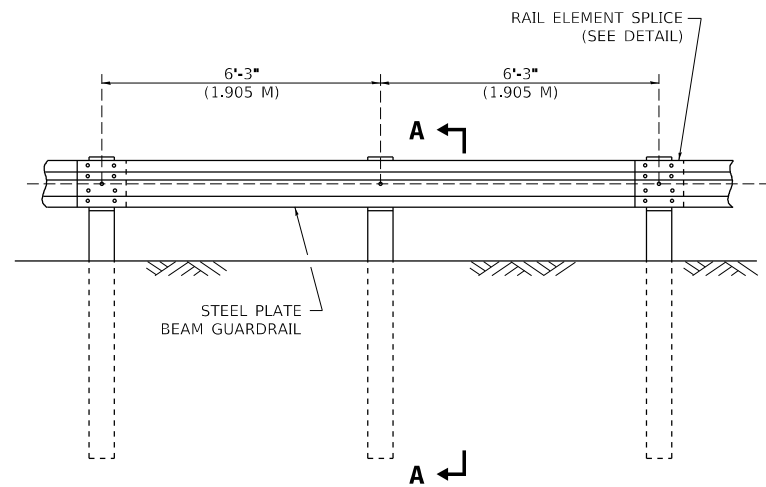
MODEL: Default  
 FILE: \\P:\Design\KKS\Signs Design\Contract-NO-62M84-6558\Sign-Structure-Design\157-from-1-64-to-1-80\CADD\Contract-NO-62M84-6558\Sign-Structure-Design-157-from-1-94-to-1-80-rev-06-10-2021\VERSION-2.dgn

USER NAME = koby/kaka	DESIGNED - KK	REVISED -
DRAWN - KK	REVISIONS -	
PLOT SCALE = 40.0000" / in.	CHECKED - LP	REVISED -
PLOT DATE = 6/10/2021	DATE - 06/20/2021	REVISED -

**STATE OF ILLINOIS**  
**DEPARTMENT OF TRANSPORTATION**

**SIGN PANEL DESIGN**  
 SCALE: SHEET OF SHEETS STA. TO STA.

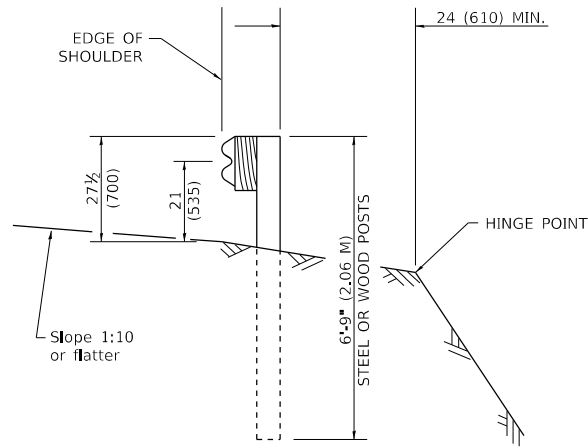
F.A. RTE.	SECTION	COUNTY	TOTAL SHEETS	SHEET NO.
	2020-212-R5&T	COOK	229	214
CONTRACT NO. 62M84				
ILLINOIS FED. AID PROJECT				



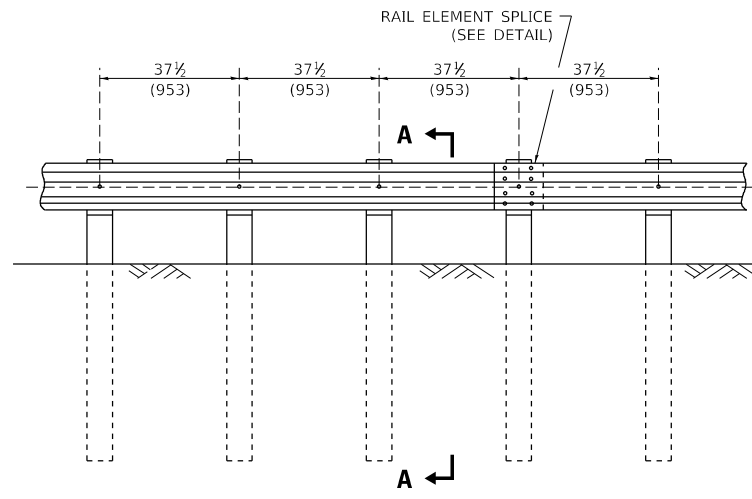
**ELEVATION**

**TYPE A**

6'-3" (1.905 M) TYPICAL POST SPACING



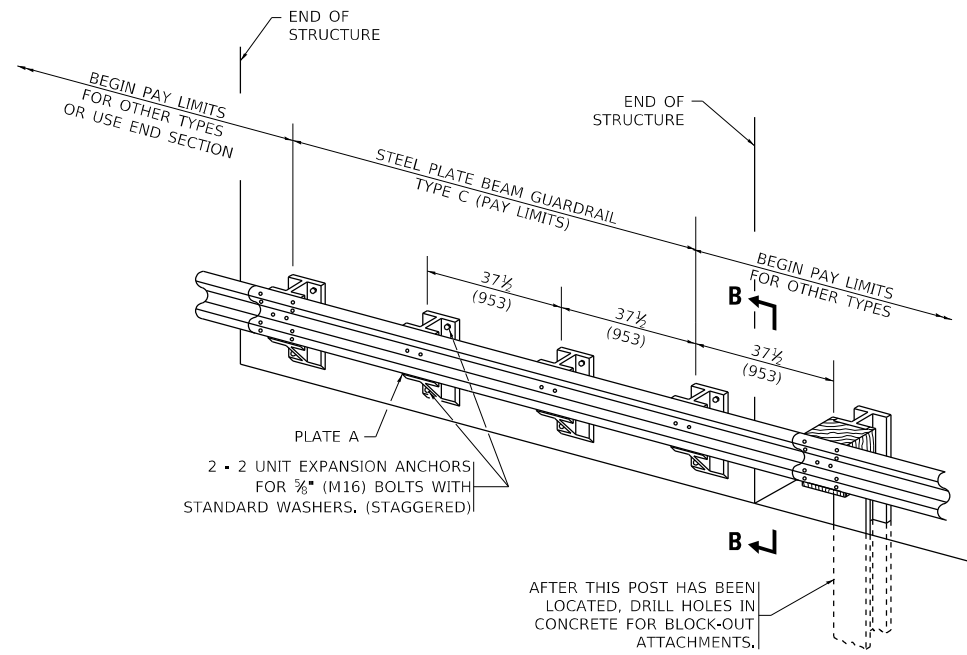
**SECTION A-A**



**ELEVATION**

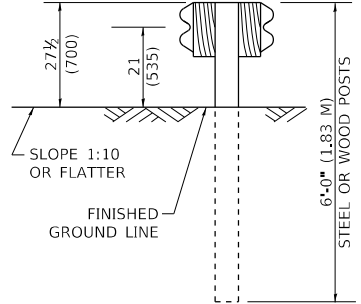
**TYPE A**

37 1/2 (953) CLOSED POST SPACING

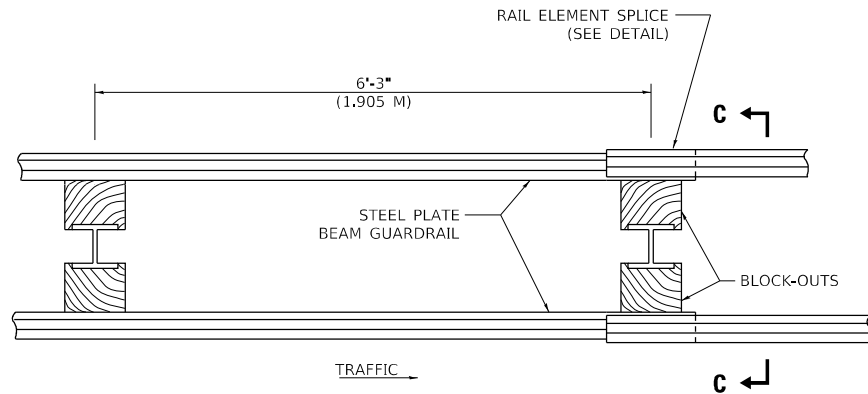


**TYPE C**

37 1/2 (953) BLOCK-OUT SPACING



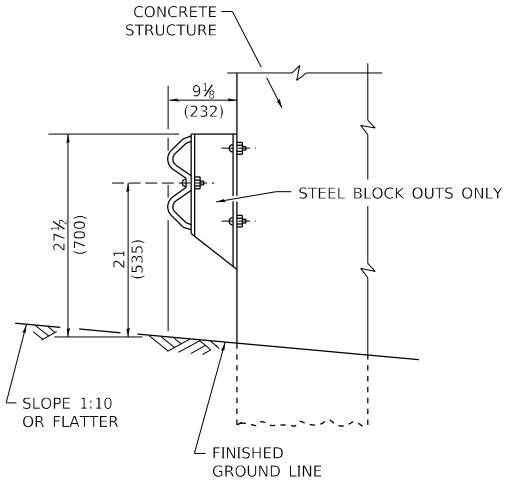
**SECTION C-C**



**PLAN**

**TYPE D**

DOUBLE STEEL PLATE BEAM GUARDRAIL  
6'-3" (1.905 M) TYPICAL POST SPACING



**SECTION B-B**

**GENERAL NOTES**

- ALL SLOPE RATIOS ARE EXPRESSED AS UNITS OF VERTICAL DISPLACEMENT TO UNITS OF HORIZONTAL DISPLACEMENT (V:H).
- ALL DIMENSIONS ARE IN INCHES (MILLIMETERS) UNLESS OTHERWISE SHOWN.
- THE EXISTING STEEL POSTS MAY BE DRILLED TO MATCH THE BOLT PATTERN SHOWN HEREIN FOR THE WOOD BLOCK-OUT, OR A NEW STEEL POST SHALL BE PROVIDED.
- THIS DETAIL IS APPLICABLE TO THE GUARDRAIL SYSTEM USED PRIOR TO JANUARY 1, 2007. FOR DETAILS ON THE MIDWEST GUARDRAIL SYSTEM, SEE STANDARD 630001.

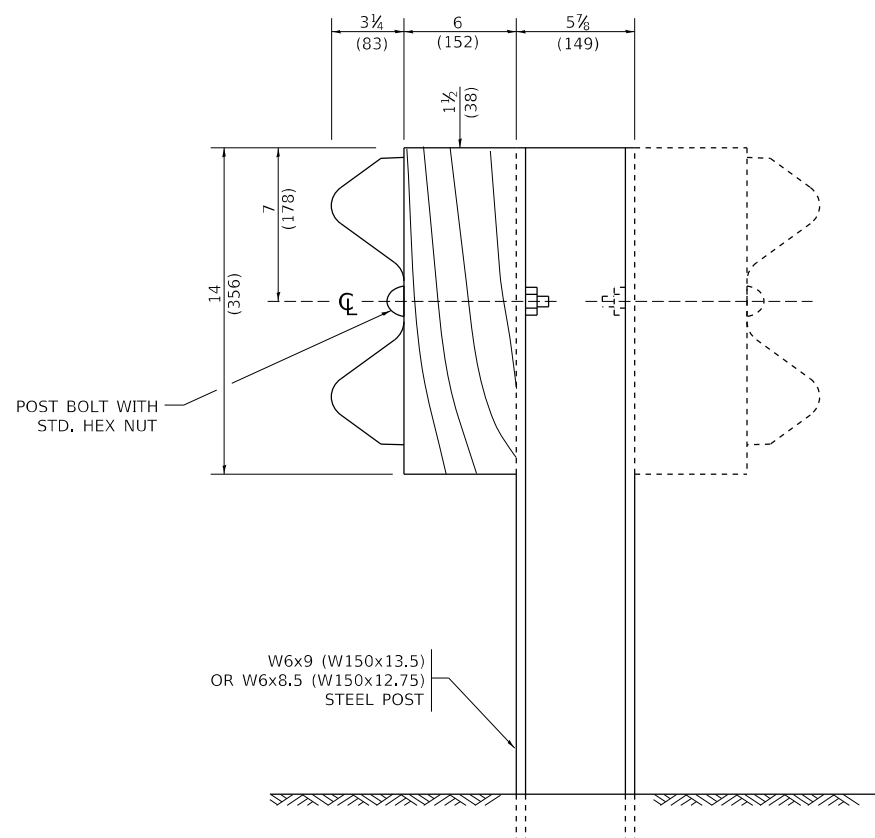
MODEL: D:\ref\...  
 FILE: I:\state\proj\...

USER NAME	DESIGNED	REVISED
DRAWN	REVISOR	REVISOR
PLOT SCALE	CHECKED	REVISOR
PLOT DATE	DATE	REVISOR

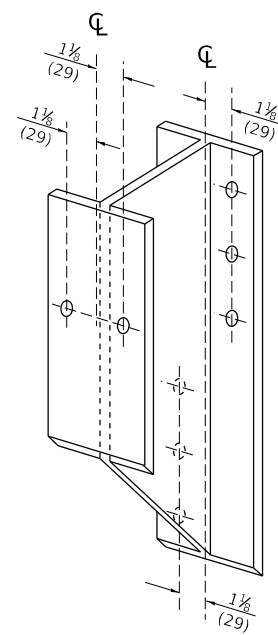
**STATE OF ILLINOIS  
DEPARTMENT OF TRANSPORTATION**

<b>REMOVE AND REERECT STEEL PLATE BEAM GUARDRAIL</b>			
SCALE: NONE	SHEET 1	OF 4 SHEETS	STA. TO STA.

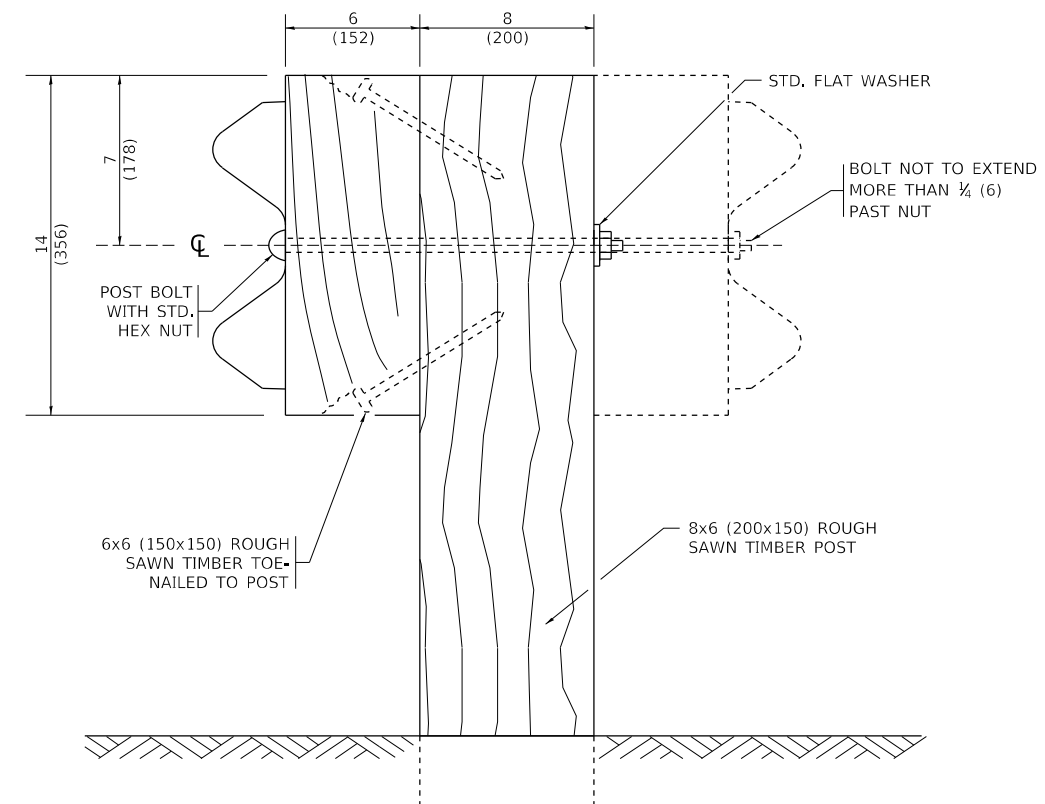
F.A. RTE.	SECTION	COUNTY	TOTAL SHEETS	SHEET NO.
57	2020-212-RS&T	COOK	229	215
BM-21		CONTRACT NO. 62M84		
ILLINOIS FED. AID PROJECT				



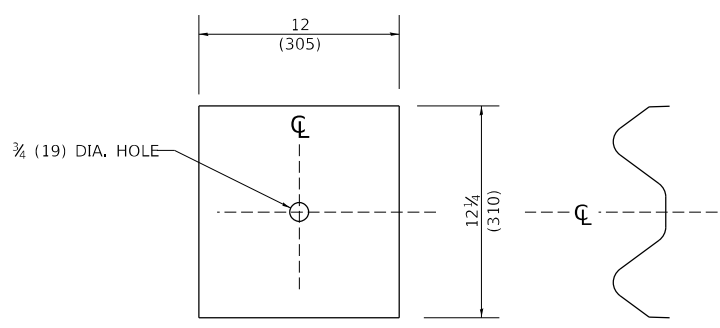
**STEEL POST CONSTRUCTION**



**STEEL BLOCK-OUT DETAIL**

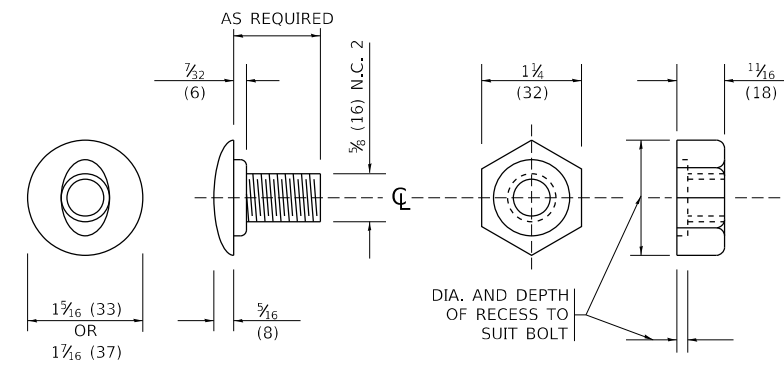


**WOOD POST CONSTRUCTION**



**NOTE:**  
 PLATE A SHALL BE PLACED BETWEEN RAIL ELEMENT AND BLOCK-OUT AT NON-SPLICE MOUNTING POINTS ONLY WHEN STEEL BLOCK-OUTS ARE USED.

**PLATE A**



**POST OR SPLICE BOLT & NUT**

MODEL: D:\ref\...  
 FILE: BM-21.dwg  
 PROJECT: ...  
 DATE: 3/11/2019 2:13:31 PM User:logan

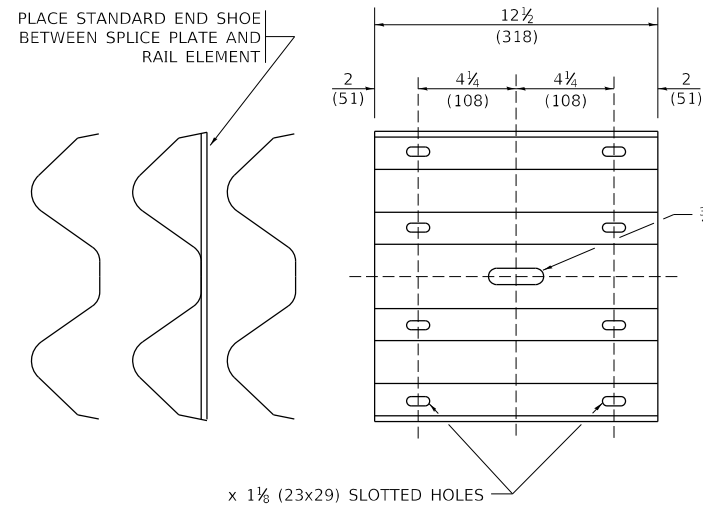
USER NAME	DESIGNED	REVISED
DRAWN	CHECKED	REVISI
PLOT SCALE	DATE	REVISI
PLOT DATE		

**STATE OF ILLINOIS  
 DEPARTMENT OF TRANSPORTATION**

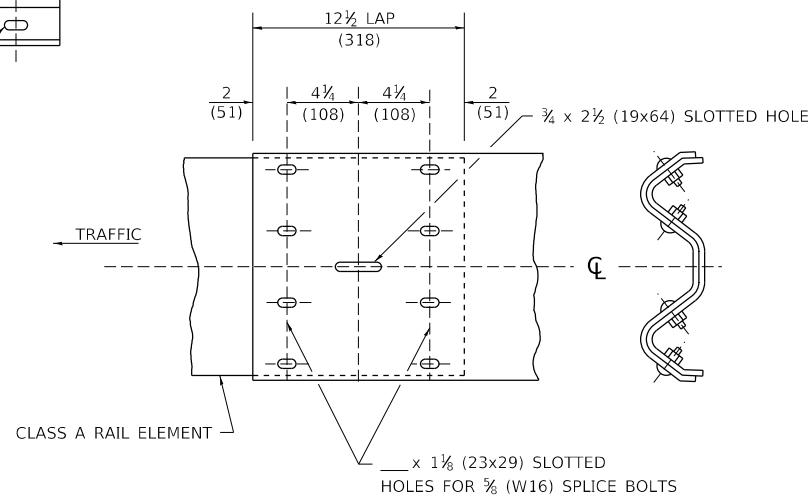
<b>REMOVE AND REERECT STEEL PLATE BEAM GUARDRAIL</b>			
SCALE: NONE	SHEET 2 OF 4 SHEETS	STA.	TO STA.

F.A. RTE.	SECTION	COUNTY	TOTAL SHEETS	SHEET NO.
57	2020-212-RS&T	COOK	229	216
BM-21			CONTRACT NO. 62M84	
ILLINOIS FED. AID PROJECT				

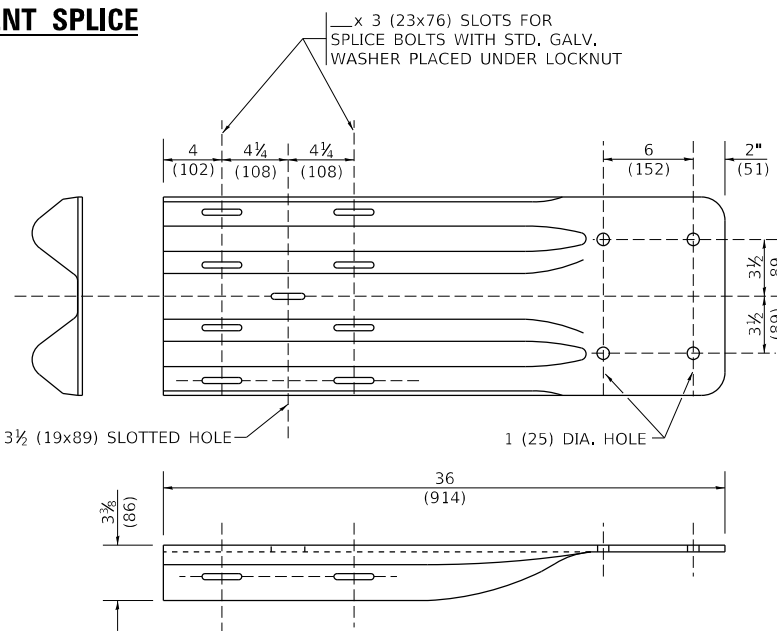




**SPLICE PLATE**



**RAIL ELEMENT SPLICE**



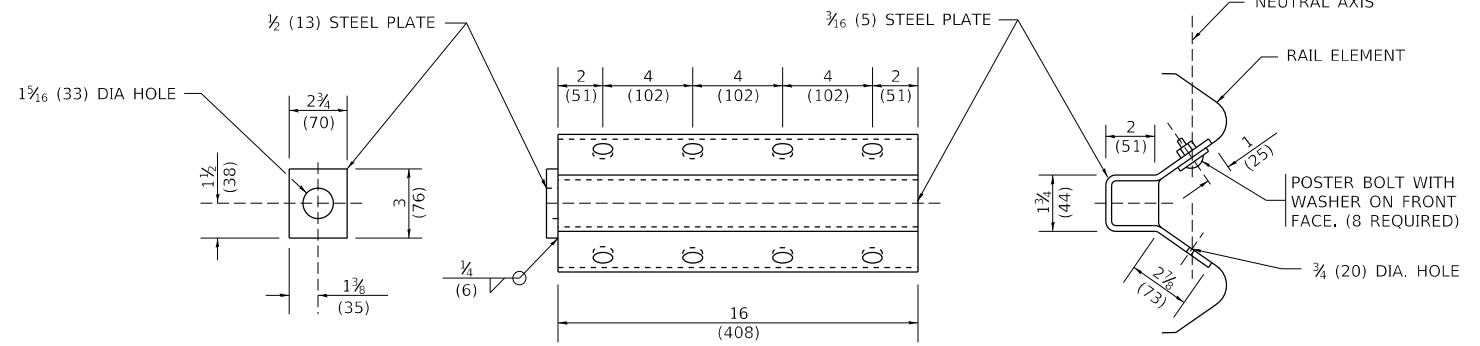
**END SHOE**

**NOTE:**

WHEN END SHOE IS ATTACHED TO A BRIDGE PARAPET WHICH HAS AN EXPANSION JOINT, THE BOLTS SHALL BE PROVIDED WITH A LOCKNUT OR DOUBLE NUT AND SHALL BE TIGHTENED ONLY TO A POINT THAT WILL ALLOW GUARDRAIL MOVEMENT.

THE STANDARD END SHOE SHALL BE ATTACHED TO THE CONCRETE WITH PRE-DRILLED OR SELF-DRILLING ANCHOR BOLTS. THE ANCHOR CONE SHALL BE SET FLUSH WITH THE SURFACE OF THE CONCRETE.

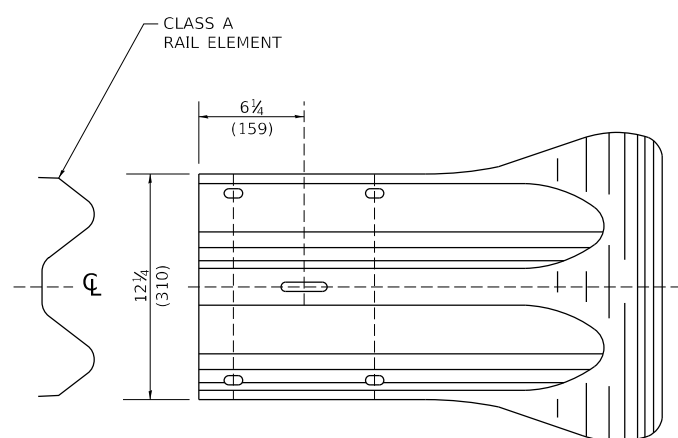
EXTERNALLY THREADED STUDS PROTRUDING FROM THE SURFACE OF THE CONCRETE WILL NOT BE PERMITTED.



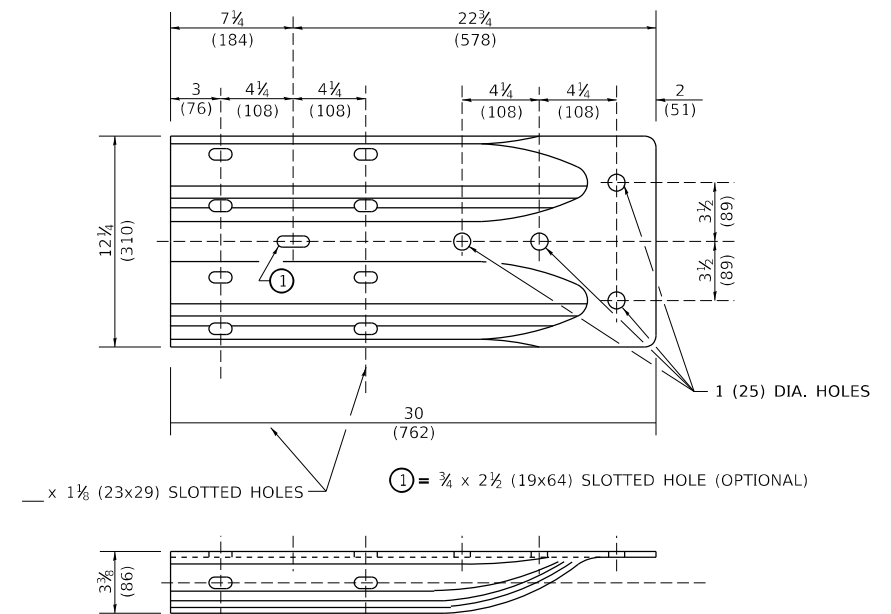
**NOTE:**

ANCHOR PLATE T SHALL BE USED TO ATTACH CABLE ASSEMBLY TO GUARDRAIL WHEN REQUIRED ON TRAFFIC BARRIER TERMINALS.

**ANCHORE PLATE T DETAILS**



**END SECTION**



**ALTERNATE END SHOE**

MODEL: D:\ref\...  
 FILE: I:\...  
 PROJECT: ...  
 DATE: 3/11/2019 2:13:59 PM User:logan

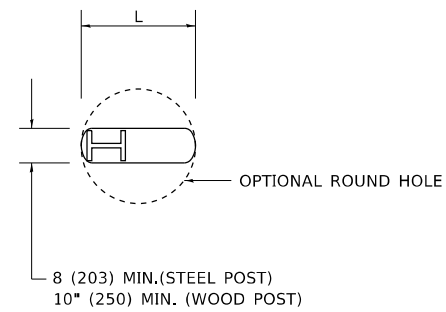
USER NAME	DESIGNED	REVISED
DRAWN	REVISIONS	
PLOT SCALE	CHECKED	REVISED
PLOT DATE	DATE	REVISED

**STATE OF ILLINOIS  
DEPARTMENT OF TRANSPORTATION**

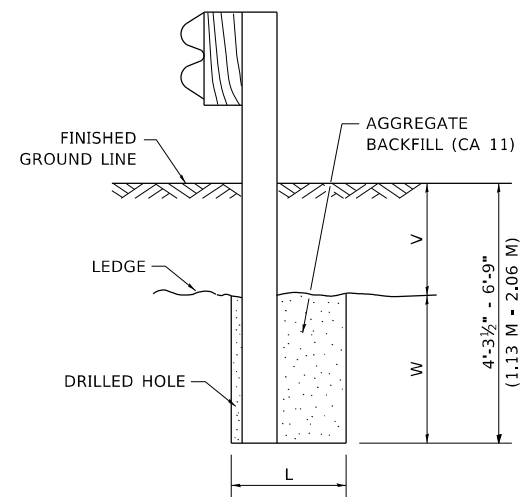
**REMOVE AND REERECT  
STEEL PLATE BEAM GUARDRAIL**

SCALE: NONE SHEET 3 OF 4 SHEETS STA. TO STA.

F.A. RTE.	SECTION	COUNTY	TOTAL SHEETS	SHEET NO.
57	2020-212-RS&T	COOK	229	217
BM-21		CONTRACT NO. 62M84		
ILLINOIS FED. AID PROJECT				



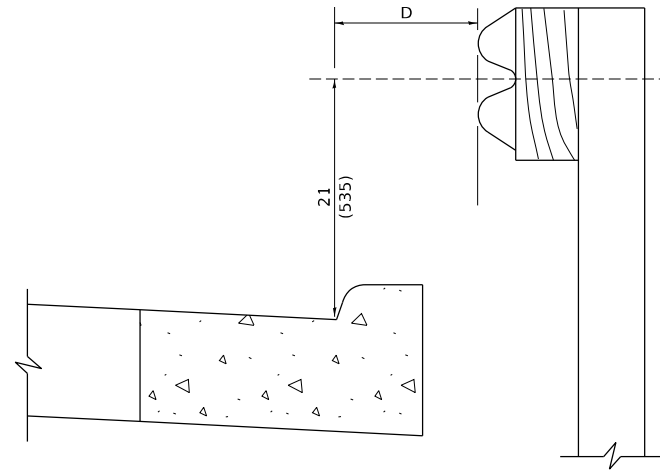
**PLAN**



**NOTE:**  
LEDGE LINE IS TOP OF ROCK  
LEDGE OR HARD SLAG FILL.

**ELEVATION**

**FOOTING FOR POST WHEN IMPERVIOUS  
MATERIAL IS ENCOUNTERED**



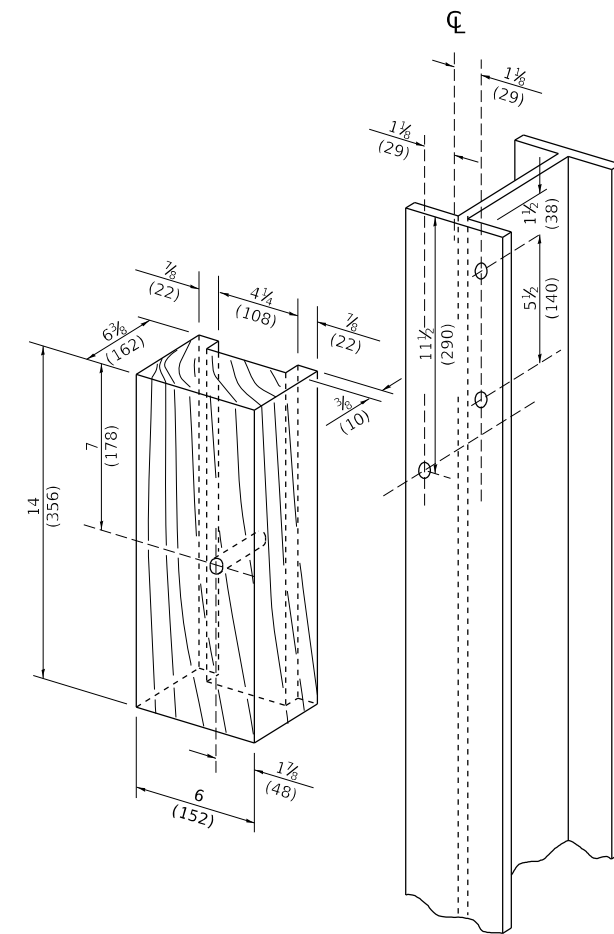
**NOTE:**

IF IT IS NECESSARY FOR D TO BE MORE THAN 12 (300) AND LESS THAN 10'-0" (3.0 M) TYPE M-2 (M-5) CURB AND GUTTER (STD. 606001) SHALL BE USED IN FRONT OF AND IN ADVANCE OF THE GUARDRAIL.

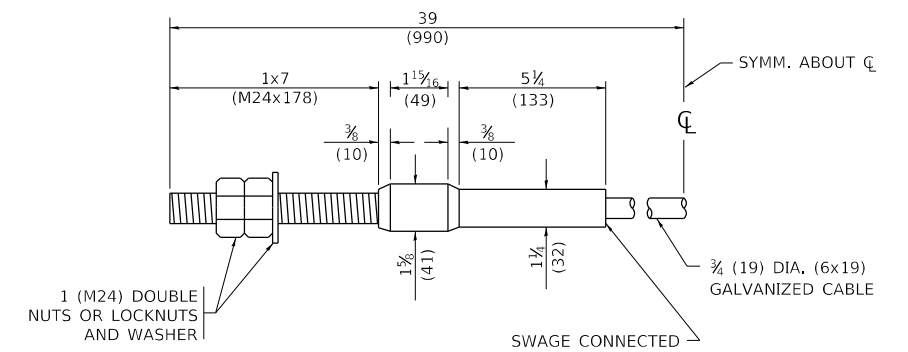
**GUARDRAIL PLACED BEHIND CURB**

(D = O DESIRABLE TO 12 (300) MAXIMUM)

V	W	L	
		STEEL POST	WOOD POST
0 - 18 (0 - 460)	24 (610)	21 (530)	23 (580)
>18 - 41.5 (> 460 - 825)	12 (305)	8 (203)	10 (250)
>41.5 - 53.5 (> 825 - 1.13 M)	12 - 0 (350 - 0)	8 (203)	10 (250)



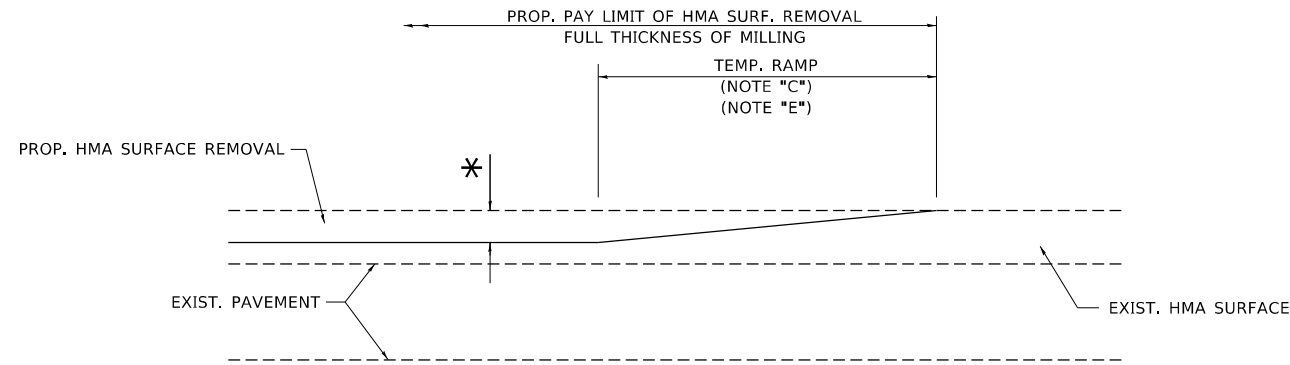
**WOOD BLOCK - OUT AND  
STEEL POST DETAILS**



**CABLE ASSEMBLY**

(40,000 LBS (18,100 KG) MIN. BREAKING STRENGTH)  
TIGHTEN TO TAUT TENSION

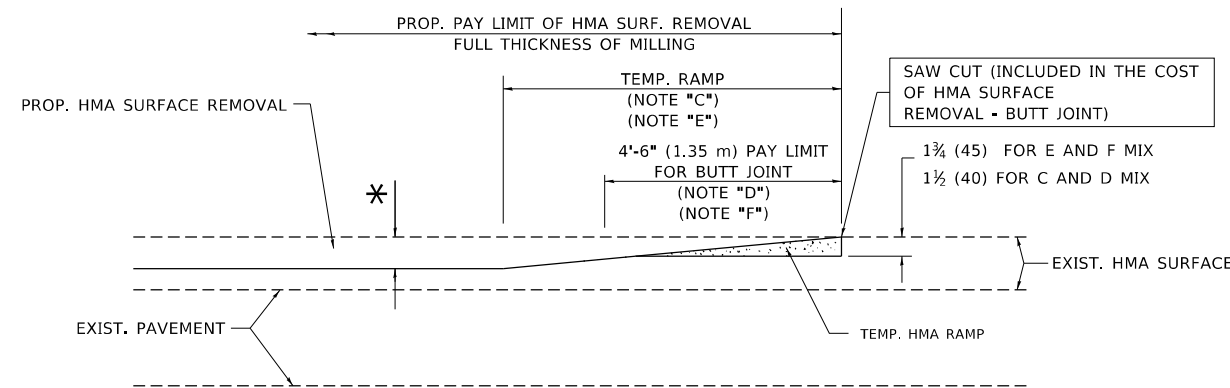




**MILLED TEMPORARY RAMP**

(FOR BUTT JOINT AND HMA TAPER SEE DETAIL BELOW)

**OPTION 1**

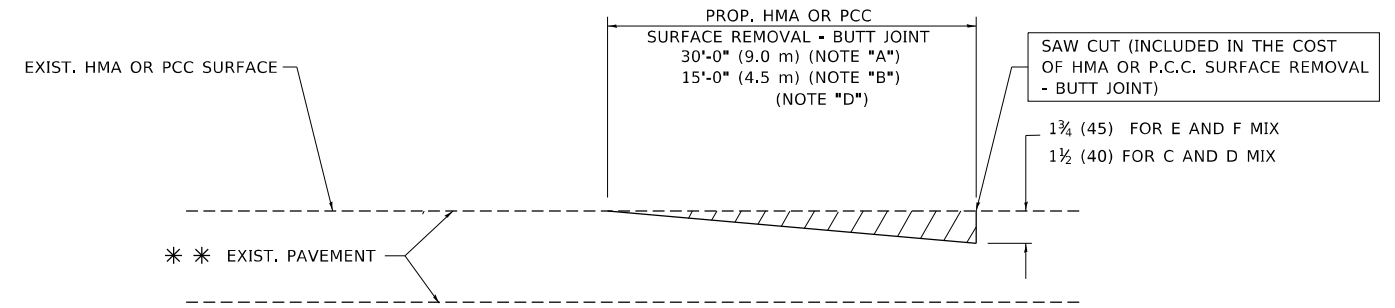


**HMA CONSTRUCTED TEMPORARY RAMP**

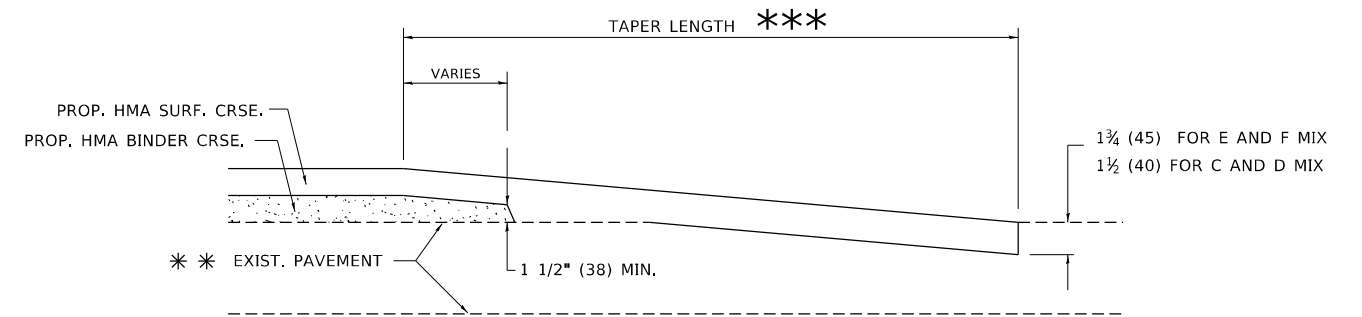
(FOR BUTT JOINT AND HMA TAPER SEE DETAIL BELOW)

**OPTION 2**

**TYPICAL TEMPORARY RAMP**



**BUTT JOINT DETAIL**



**HMA TAPER DETAIL**

**TYPICAL BUTT JOINT AND HMA TAPER FOR RESURFACING ONLY**

\*\*\* PC CONCRETE, HMA OR HMA RESURFACED PAVEMENT.

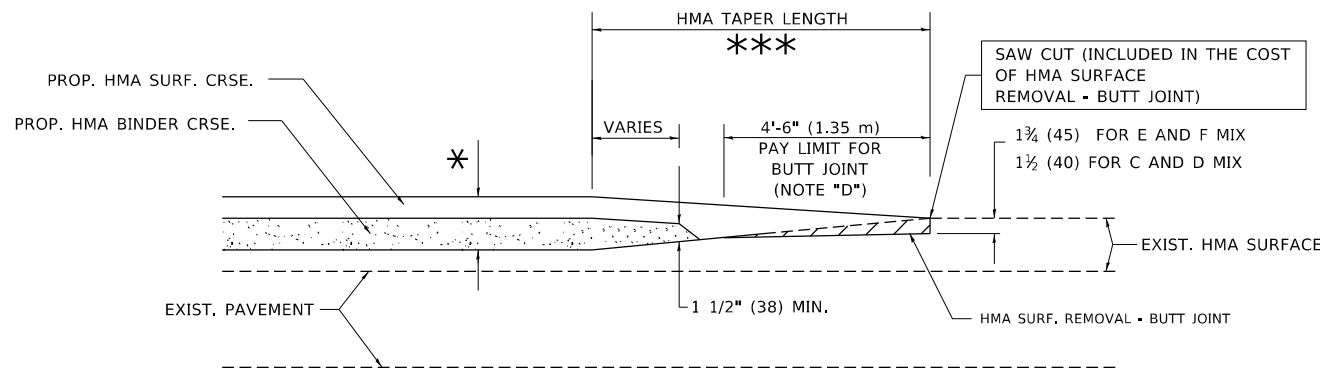
**NOTES**

- A. MAINLINE ROADWAYS AND MAJOR SIDE ROADS.
- B. MINOR SIDE ROADS.
- C. THE TEMP. RAMP SHALL BE CONSTRUCTED IMMEDIATELY UPON REMOVAL OF THE EXISTING HMA SURFACE.
- D. THE BUTT JOINT SHALL BE CONSTRUCTED IMMEDIATELY PRIOR TO PLACING THE PROPOSED HMA COURSES.
- E. TAPER THE TEMP. RAMP AT A RATE OF 3'-0" (900 mm) PER 1 INCH (25 mm) OF MILLING THICKNESS.
- F. INSTALLATION AND REMOVAL OF THE 4'-6" (1.35 m) TEMP. RAMP IS INCLUDED IN COST OF HMA SURFACE REMOVAL - BUTT JOINT.  
\* SEE TYPICAL SECTIONS FOR MILLING THICKNESS.
- G. SEE ARTICLE 406.08 AND 406.14 OF THE STANDARD SPECIFICATIONS FOR "HMA AND/OR PCC SURFACE REMOVAL, BUTT JOINT".  
\*\*\* 20'-0" (6.1 m) PER 1 (25) RESURFACING (NOTE "A")  
10'-0" (3.0 m) PER 1 (25) RESURFACING (NOTE "B")

**BASIS OF PAYMENT**

THE BUTT JOINT WILL BE PAID FOR AT THE CONTRACT UNIT PRICE PER SQUARE YARD (SQUARE METER) FOR "HOT-MIX ASPHALT SURFACE REMOVAL - BUTT JOINT" OR FOR "PORTLAND CEMENT CONCRETE SURFACE REMOVAL - BUTT JOINT".

ALL DIMENSIONS ARE IN INCHES (MILLIMETERS) UNLESS OTHERWISE SHOWN.



**BUTT JOINT AND HMA TAPER**

**TYPICAL BUTT JOINT AND HMA TAPER FOR MILLING AND RESURFACING**

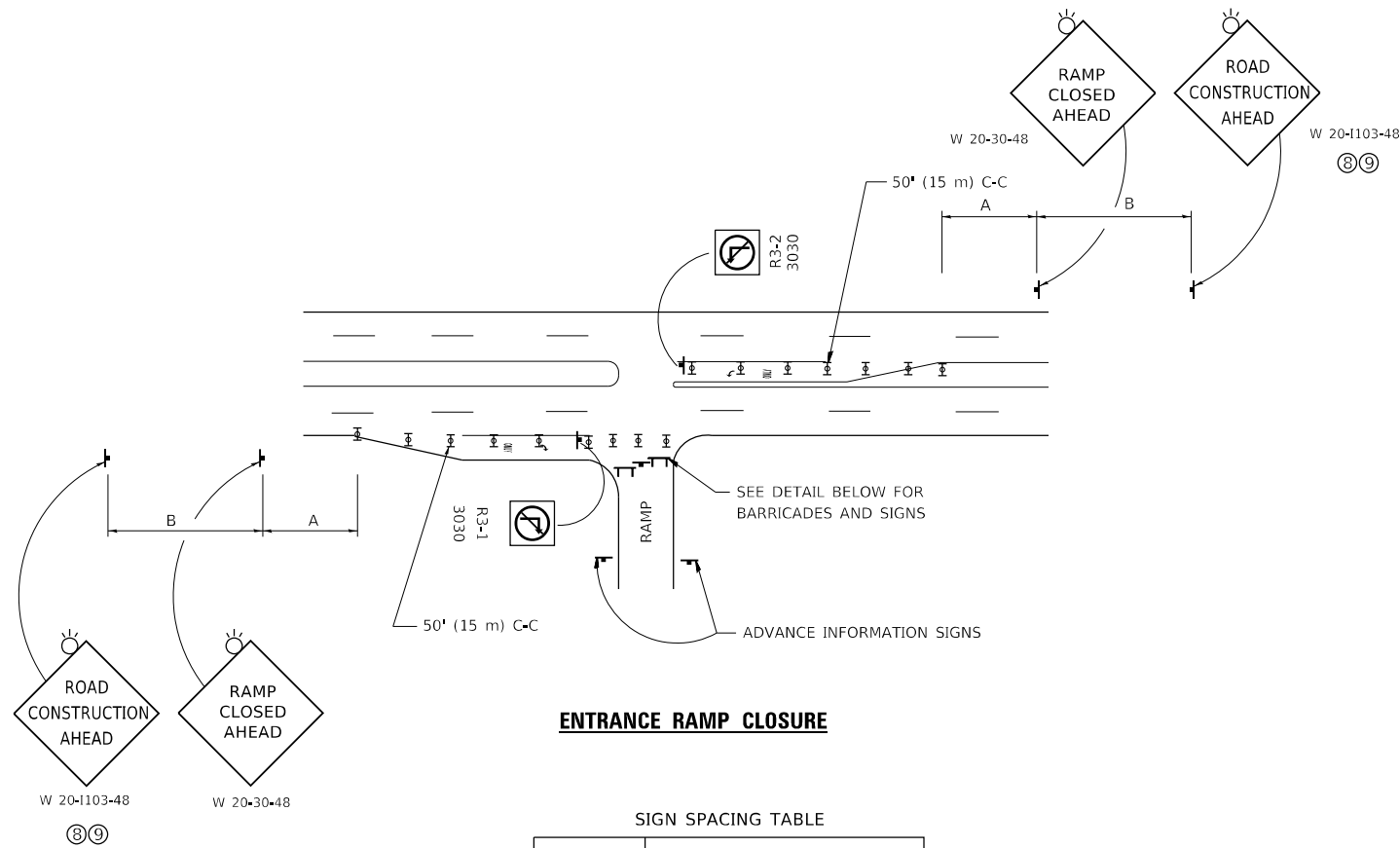
MODEL: D:\ref\... FILE: hma\... PROJECT: ...

USER NAME	DESIGNED	REVISED
DRAWN	CHECKED	REVISED
PLOT SCALE	DATE	REVISED
PLOT DATE		

STATE OF ILLINOIS  
DEPARTMENT OF TRANSPORTATION

BUTT JOINT AND HMA TAPER DETAILS			
SCALE: NONE	SHEET 1	OF 1 SHEETS	STA. TO STA.

F.A. RTE.	SECTION	COUNTY	TOTAL SHEETS	SHEET NO.
57	2020-212-RS&T	COOK	229	220
BD400-05 BD32		CONTRACT NO. 62M84		
ILLINOIS FED. AID PROJECT				

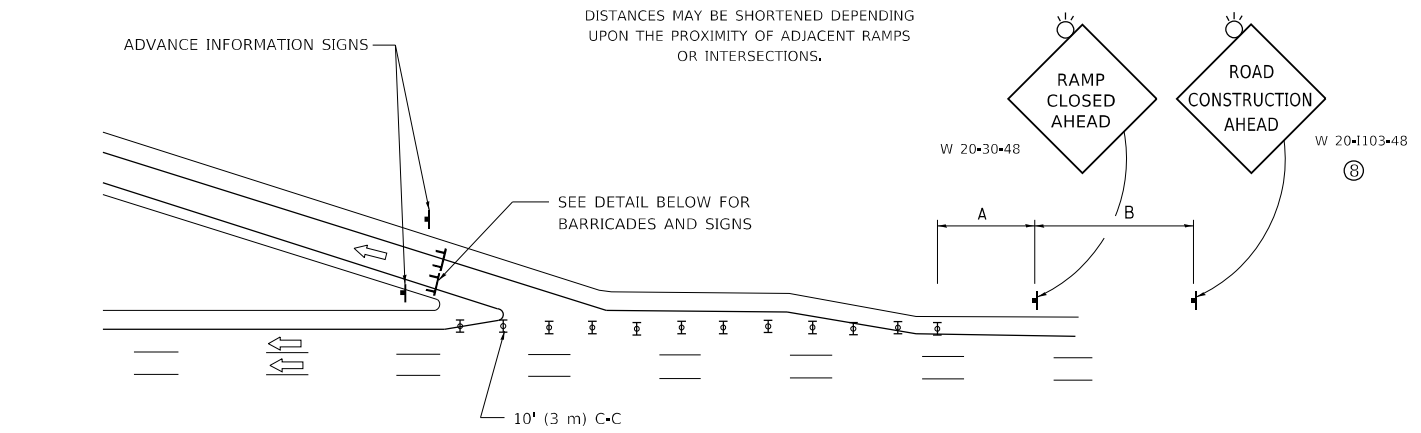


**ENTRANCE RAMP CLOSURE**

SIGN SPACING TABLE

FACILITY	DISTANCE BETWEEN SIGNS	
	A	B
EXPRESSWAY >24 HOURS	1000' (300 m)	1500' (450 m)
EXPRESSWAY ≤24 HOURS	500' (150 m)	500' (150 m)
ARTERIAL 55 MPH	500' (150 m)	500' (150 m)
ARTERIAL 50-45 MPH	350' (100 m)	350' (100 m)
ARTERIAL <45 MPH	200' (60 m)	200' (60 m)

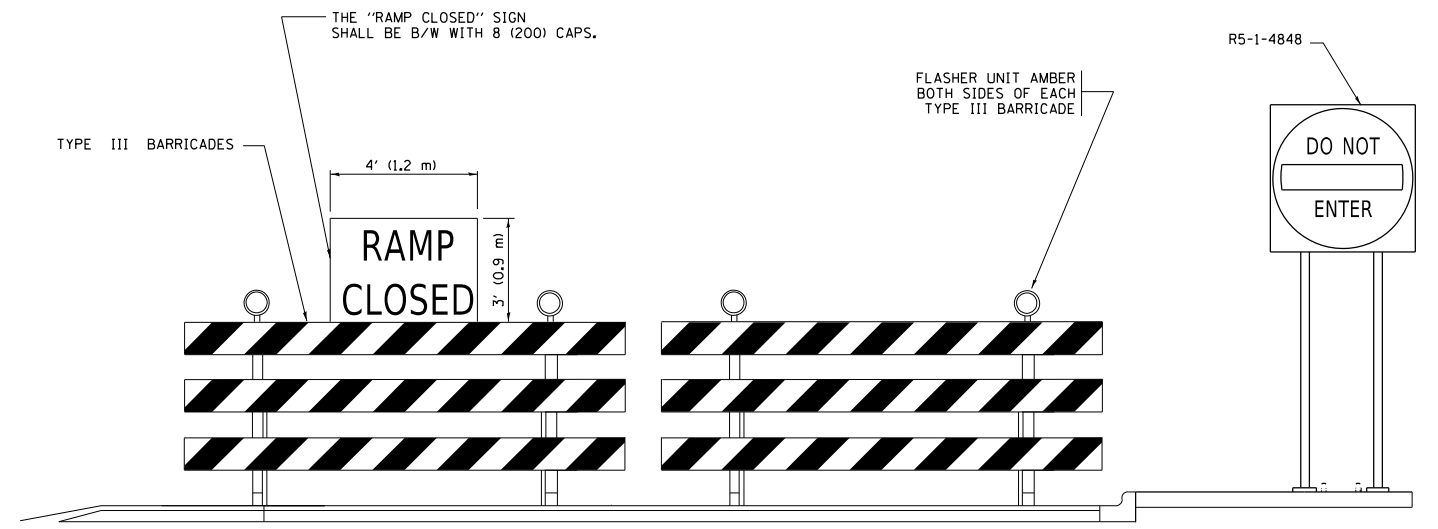
DISTANCES MAY BE SHORTENED DEPENDING UPON THE PROXIMITY OF ADJACENT RAMPS OR INTERSECTIONS.



**EXIT RAMP CLOSURE**

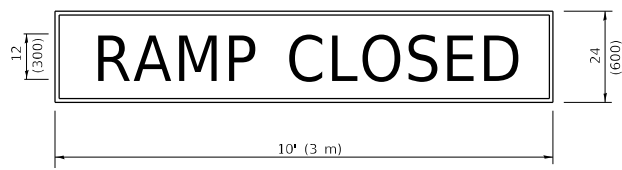
**SYMBOLS**

- ▬ TYPE II BARRICADE OR DRUM
- ▬ TYPE III BARRICADE WITH 2 FLASHING LIGHTS



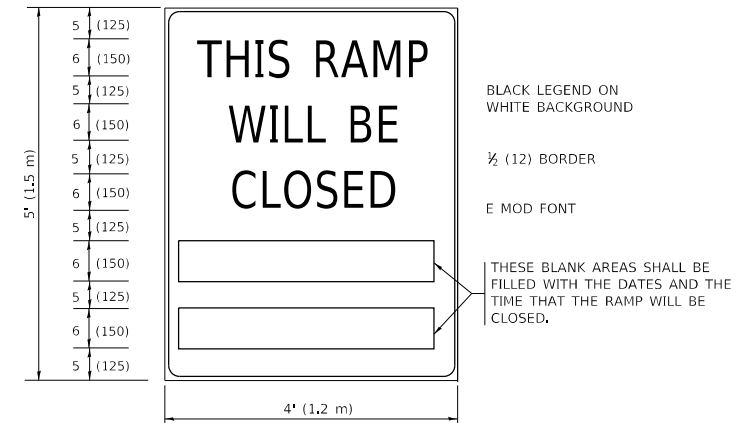
**DETAIL FOR REQUIRED BARRICADES & SIGNS**

**RAMP CLOSURE ADVANCE WARNING SIGN**



BLACK LEGEND ON ORANGE BACKGROUND MOUNTED DIAGONALLY  
E MOD FONT  
1 (25) BORDER  
THESE SIGNS ARE REQUIRED ON ALL THE EXIT GUIDE SIGNS FOR EXIT RAMPS THAT WILL BE CLOSED FOR MORE THAN FOUR (4) CONSECUTIVE DAYS.

**RAMP CLOSURE ADVANCE INFORMATION SIGN**



BLACK LEGEND ON WHITE BACKGROUND  
1/2 (12) BORDER  
E MOD FONT  
THESE BLANK AREAS SHALL BE FILLED WITH THE DATES AND THE TIME THAT THE RAMP WILL BE CLOSED.

THESE SIGNS ARE REQUIRED ON BOTH SIDES OF THE RAMP, MINIMUM OF 1 WEEK IN ADVANCE OF THE CLOSURE.  
THESE SIGNS SHALL BE FABRICATED AND PAID FOR ACCORDING TO THE TEMPORARY INFORMATION SIGNING SPECIAL PROVISION

**GENERAL NOTES:**

- ① CONES MAY BE SUBSTITUTED FOR DRUMS OR TYPE II BARRICADES DURING DAY OPERATIONS. CONES SHALL BE A MINIMUM OF 28 (700) HIGH.
- ② VERTICAL BARRICADES SHALL NOT BE USED FOR RAMP CLOSURES.
- ③ A FLAGGER SHALL BE POSITIONED AT EACH CLOSED RAMP THAT IS OPEN TO CONSTRUCTION VEHICLES, PRECEDED BY A W20-7 FLAGGER WARNING SIGN.
- ④ ALL ROUTE MARKERS AND TRAILBLAZER ASSEMBLIES WHICH DIRECT MOTORISTS TO A CLOSED ENTRANCE RAMP SHALL BE COVERED WHEN THE RAMP IS CLOSED FOR MORE THAN FOUR (4) DAYS.
- ⑤ THE SIGNING AND BARRICADING WHICH IS REQUIRED BY THIS DETAIL SHALL BE INCLUDED IN THE COST OF TRAFFIC CONTROL AND PROTECTION (EXPRESSWAYS).
- ⑥ AUTHORIZATION FROM THE DISTRICT'S BUREAU OF TRAFFIC IS REQUIRED FOR ALL RAMP CLOSURES.
- ⑦ THE RAMP CLOSURE ADVANCE INFORMATION SIGNS SHALL BE ERECTED IF THE CLOSURE TIME EXCEEDS TWENTY-FOUR (24) HOURS. ADDITIONAL ADVANCE WARNING SIGNS ON EXIT GUIDE SIGNING WILL BE REQUIRED FOR EXIT RAMP CLOSURES THAT EXCEED FOUR (4) DAYS IN LENGTH.
- ⑧ ROAD CONSTRUCTION AHEAD SIGNS MAY BE OMITTED WHEN THIS DETAIL IS USED IN CONJUNCTION WITH OTHER TRAFFIC CONTROL THAT ALREADY INCLUDES A ROAD CONSTRUCTION AHEAD SIGN.
- ⑨ ARTERIAL ROAD CONSTRUCTION AHEAD SIGNS SHALL BE INSTALLED ON THE LEFT SIDE OF TRAFFIC IF THE MEDIAN IS MORE THAN 10 FT WIDE.

ALL DIMENSIONS ARE IN INCHES (MILLIMETERS) UNLESS OTHERWISE SHOWN.

MODEL: D:\ref\... FILE: I:\state\p... I:\state\p... I:\state\p...

USER NAME	DESIGNED - D.W.S.	REVISED - S.P.B._01-07
DRAWN	REVISED - S.P.B._12-09	
PLOT SCALE	CHECKED -	REVISED - M.D._06-13
PLOT DATE	DATE - 02-83	REVISED - M.D._01-18

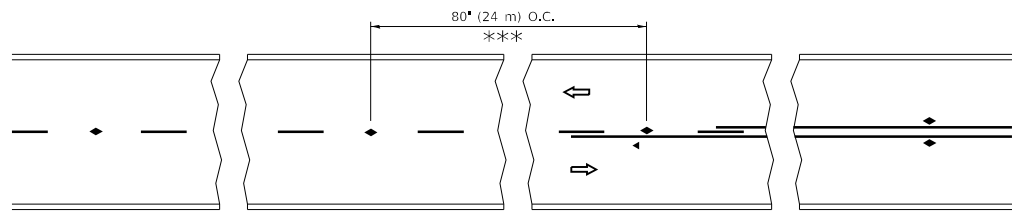
**STATE OF ILLINOIS DEPARTMENT OF TRANSPORTATION**

**ENTRANCE AND EXIT RAMP CLOSURE DETAILS**

SCALE: NONE SHEET 1 OF 1 SHEETS STA. TO STA.

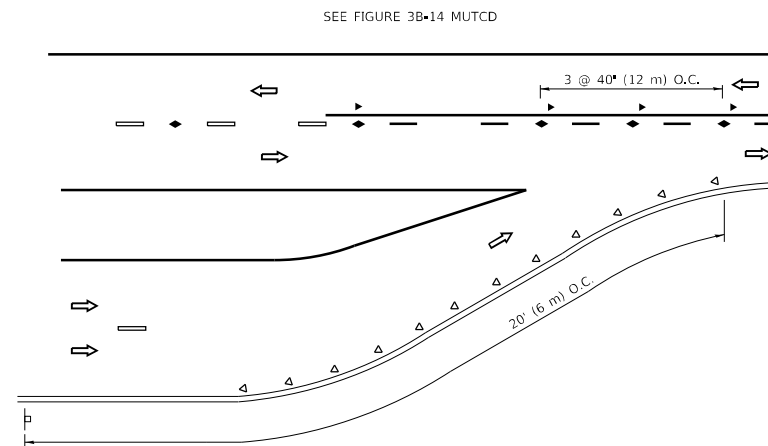
F.A. RTE.	SECTION	COUNTY	TOTAL SHEETS	SHEET NO.
57	2020-212-RS&T	COOK	229	221
TC-08		CONTRACT NO. 62M84		
ILLINOIS		FED. AID PROJECT		



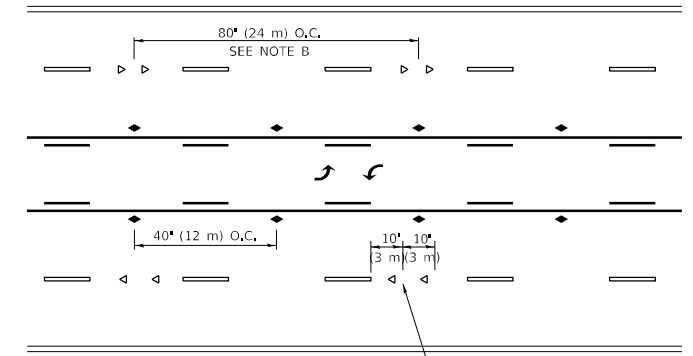


\*\*\* REDUCE TO 40' (12 m) O.C. ON CURVES WITH POSTED OR ADVISORY SPEED 45 M.P.H. (70 km/h) OR LESS.

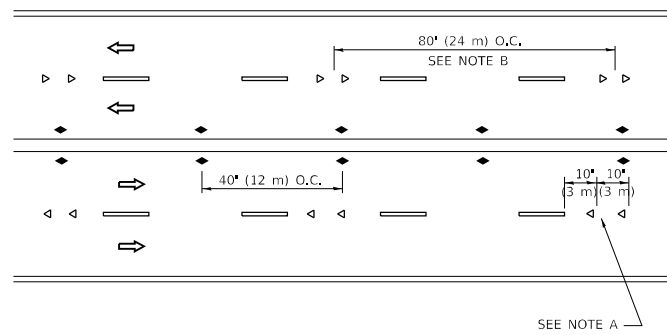
**TWO-LANE/TWO-WAY**



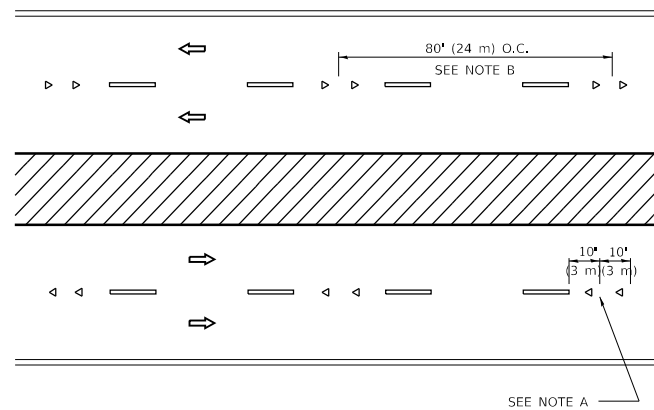
**LANE REDUCTION TRANSITION**



**TWO-WAY LEFT TURN**



**MULTI-LANE/UNDIVIDED**



**MULTI-LANE/DIVIDED**

**GENERAL NOTES**

1. MARKERS USED WITH DASHED LINES SHALL BE CENTERED IN THE GAP BETWEEN SEGMENTS.
2. MARKERS USED ADJACENT TO SOLID LINES SHALL BE OFFSET 2 TO 3 (50 TO 75) TOWARD TRAFFIC AS SHOWN.
3. MARKERS THROUGH TANGENTS LESS THAN 500' (150 m) IN LENGTH BETWEEN CURVES SHALL BE INSTALLED AT THE LESSER OF THE TWO CURVE SPACINGS.
4. MARKERS ARE TO BE USED ADJACENT TO BOTH SOLID WHITE LINES IN DUAL LEFT TURN LANES

**SYMBOLS**

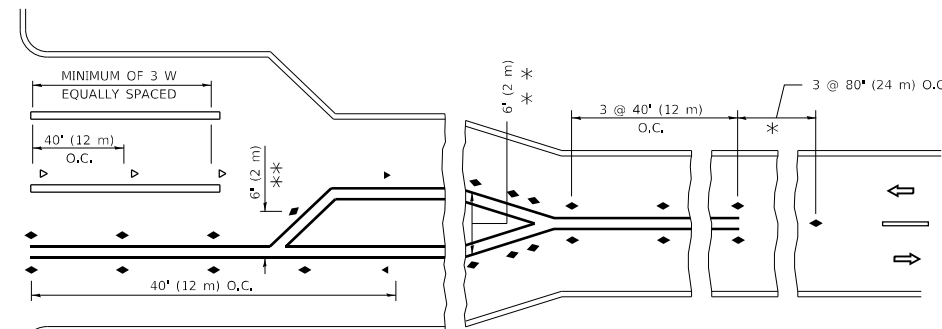
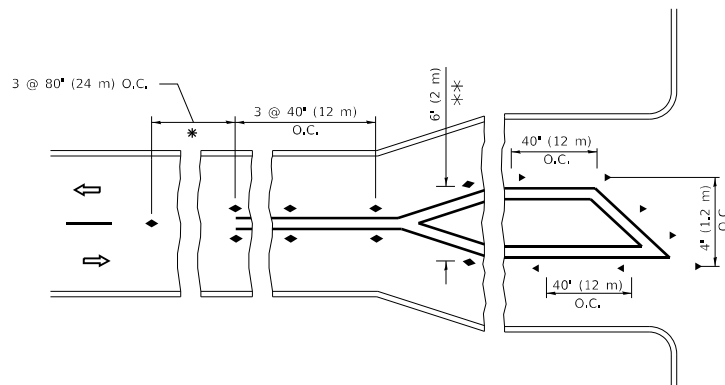
- YELLOW STRIPE
- WHITE STRIPE
- ◀ ONE-WAY AMBER MARKER
- ◀ ONE-WAY CRYSTAL MARKER (W/O)
- ◆ TWO-WAY AMBER MARKER

**LANE MARKER NOTES**

- A. USE DOUBLE LANE LINE MARKERS SPACED AS SHOWN.
- B. REDUCE TO 40' (12 m) O.C. ON CURVES WHERE ADVISORY SPEEDS ARE 10 M.P.H. (20 km/h) LOWER THAN POSTED SPEEDS.

**DESIGN NOTES**

1. DOUBLE LANE LINE MARKERS SHALL BE USED UNLESS SPECIFIED OTHERWISE.
2. EXCEPT AS SHOWN ON THE LANE REDUCTION TRANSITION AND FREEWAY EXIT RAMP DETAIL, MARKERS ARE NOT TO BE SPECIFIED ON RIGHT EDGE LINES.
3. THE EXACT MARKER LIMITS, SPACING, AND COLOR SHALL BE INCLUDED IN THE PLANS WHEN STANDARD SPECIFICATIONS ARE NOT BEING USED.
4. MARKERS SHOULD NOT BE USED ALONGSIDE CURBS EXCEPT FOR EXTREMELY SHORT SECTIONS OF CURBS WHERE NOT MORE THAN TWO MARKERS WOULD BE INVOLVED.



\* SEE TWO-LANE/TWO-WAY WHERE MARKERS CONTINUE  
 \*\* WHERE THE MEDIAN WIDTH IS 6' (2 m) OR LESS USE TWO-WAY MARKERS.

**TURN LANES**

All dimensions are in inches (millimeters) unless otherwise shown.

MODEL: D:\ref\...  
 FILE: M:\M&E\...

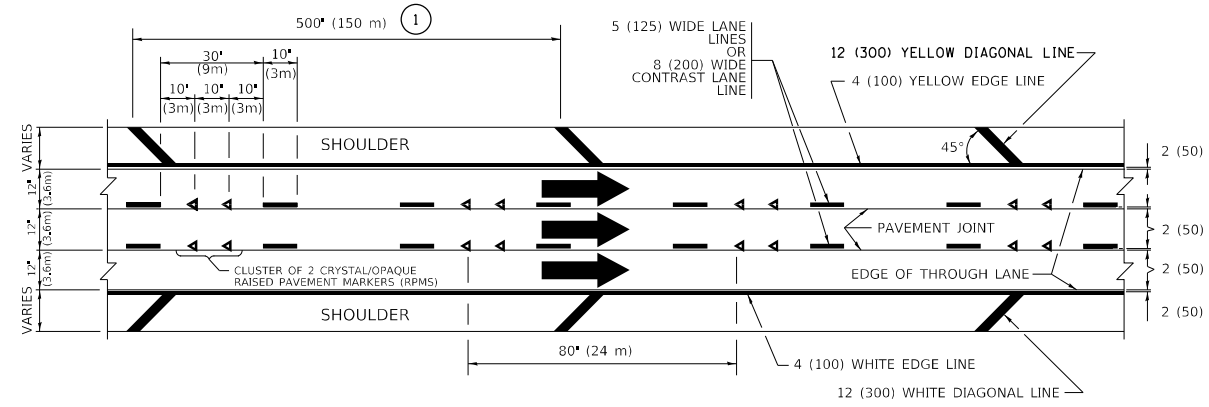
USER NAME	DESIGNED	REVISED
DRAWN	REVISION	DATE
PLOT SCALE	CHECKED	REVISED
PLOT DATE	DATE	REVISED

**STATE OF ILLINOIS  
 DEPARTMENT OF TRANSPORTATION**

**TYPICAL APPLICATIONS  
 RAISED REFLECTIVE PAVEMENT MARKERS (SNOW-PLOW RESISTANT)**

SCALE: NONE SHEET 1 OF 1 SHEETS STA. TO STA.

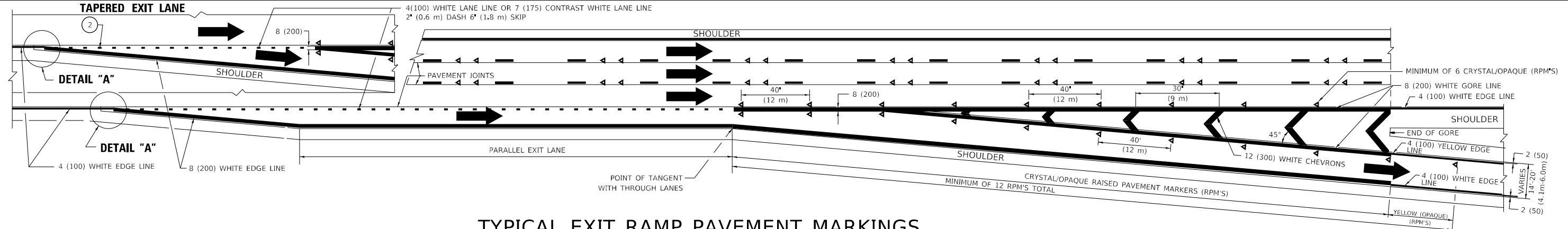
F.A. RTE.	SECTION	COUNTY	TOTAL SHEETS	SHEET NO.
57	2020-212-RS&T	COOK	229	223
TC-11		CONTRACT NO. 62M84		
ILLINOIS		FED. AID PROJECT		



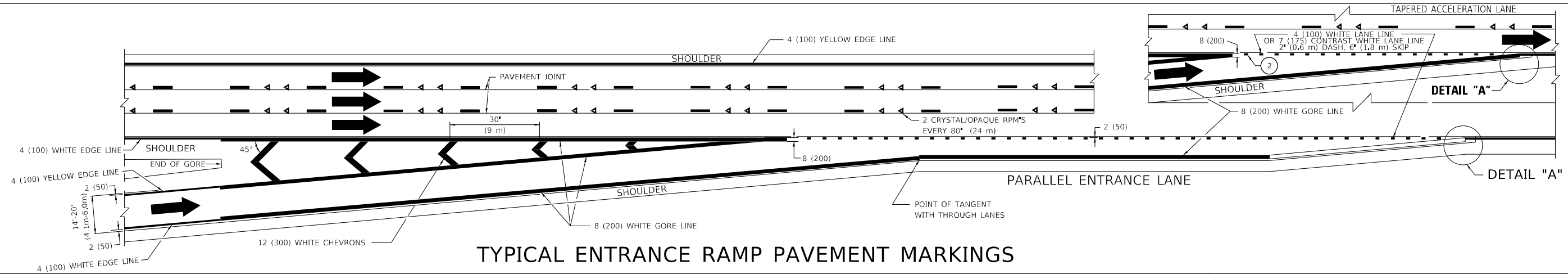
TYPICAL EDGE LINES & LANE LINES

**PAVEMENT MARKING MATERIALS**

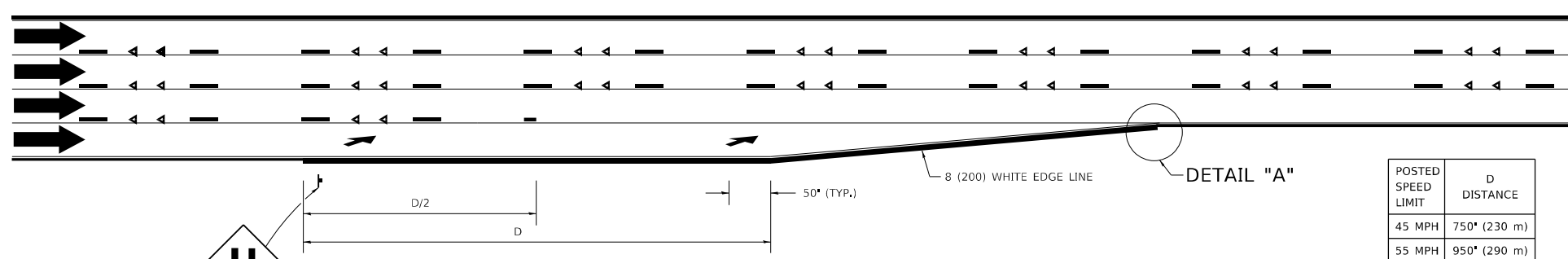
1. THERMOPLASTIC PAVEMENT MARKING LINE SHALL BE USED FOR ALL EDGE LINES, GORE LINES, AND DIAGONAL LINES ON HMA PAVEMENTS.
2. POLYUREA OR MODIFIED URETHANE PAVEMENT MARKING LINE SHALL BE USED FOR ALL EDGE LINES, GORE LINES, AND DIAGONAL LINES ON PCC PAVEMENTS.
3. PREFORMED PLASTIC PAVEMENT MARKING LINE TYPE B, INLAID OR GROOVE IN, SHALL BE USED FOR ALL LANE LINES ON HMA PAVEMENTS.
4. CONTRAST PREFORMED PLASTIC PAVEMENT MARKING LINE TYPE B, GROOVE IN, SHALL BE USED FOR ALL LANE LINES ON PCC PAVEMENT.



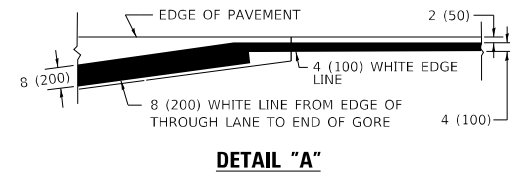
TYPICAL EXIT RAMP PAVEMENT MARKINGS



TYPICAL ENTRANCE RAMP PAVEMENT MARKINGS



LANE REDUCTION PAVEMENT MARKINGS



- NOTES:**
1. THE DIAGONAL LINES SHALL BE SPACED AT 40' (12 m) C-C ACROSS ALL STRUCTURES WHICH ARE 500' (150 m) OR LESS IN LENGTH. THE DIAGONAL LINES ARE NOT REQUIRED ON SHOULDERS WHICH ARE 6' (1.8 m) OR LESS IN WIDTH.
  2. 4" (2' DASH, 6' SKIP) MARKING ON TAPERED ENTRANCE AND EXIT RAMP SHALL BE OMITTED ON TANGENT SECTIONS.

POSTED SPEED LIMIT	D DISTANCE
45 MPH	750' (230 m)
55 MPH	950' (290 m)
65 MPH	1200' (365 m)

USER NAME	DESIGNED - D.W.S.	REVISED - S.P.B. 01-07
DRAWN	REVISED - S.P.B. 01-10	
PLOT SCALE - 50,0000 * / in.	CHECKED -	REVISED - M.D. 05-13
PLOT DATE - 3/4/2019	DATE - 01-90	REVISED - M.D. 09-17

STATE OF ILLINOIS  
DEPARTMENT OF TRANSPORTATION

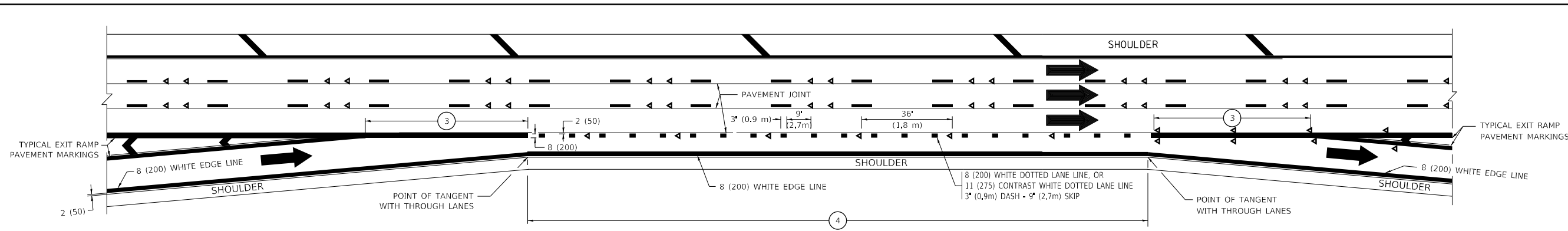
MULTI-LANE FREEWAY  
PAVEMENT MARKING DETAILS

SCALE: NONE SHEET 1 OF 2 SHEETS STA. TO STA.

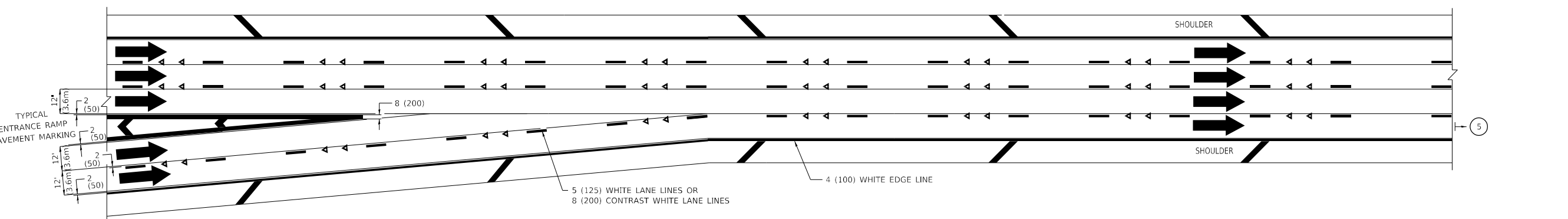
F.A. RTE.	SECTION	COUNTY	TOTAL SHEETS	SHEET NO.
57	2020-212-RS&T	COOK	229	224
TC-12		CONTRACT NO. 62M84		
ILLINOIS FED. AID PROJECT				

MODEL: D:\ref\...  
 FILE: I:\M&E\...  
 PROJECT: I:\M&E\...  
 DATE: 3/4/2019

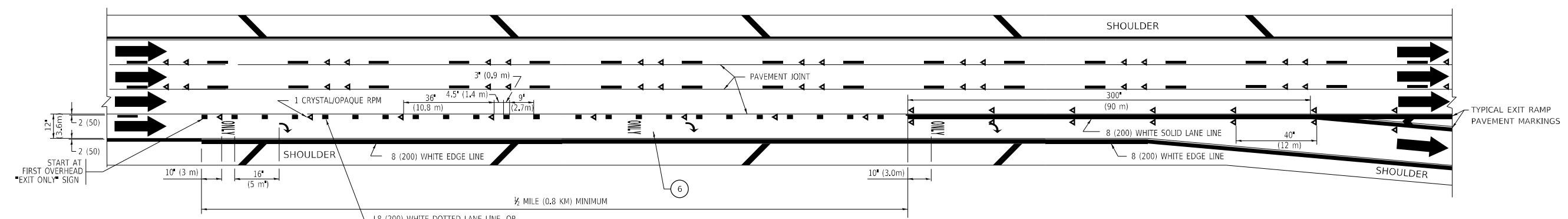




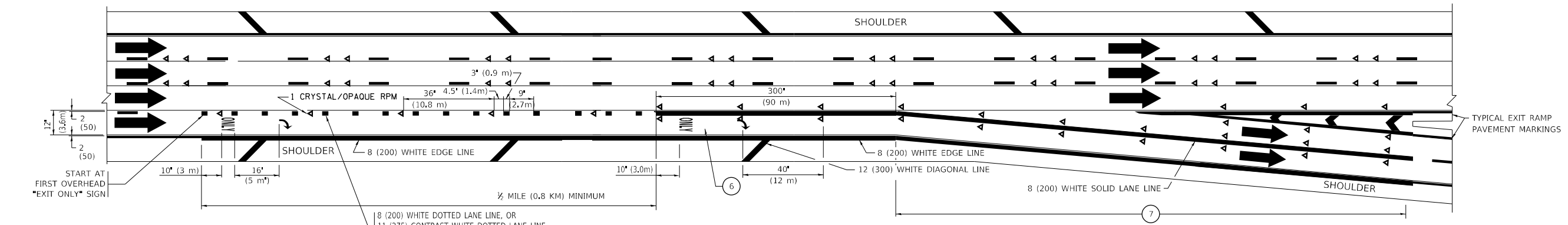
AUXILIARY LANE MARKINGS



TWO LANE ENTRANCE RAMP WITH MERGE MARKINGS



EXIT ONLY LANE MARKINGS



EXIT ONLY WITH OPTION LANE MARKINGS

- NOTES:**
- ③ OMIT WHEN LENGTH OF AUXILIARY LANE IS LESS THAN 500' (150 m).
  - ④ 8-INCH WIDE DOTTED LANE LINE MARKINGS SHALL BE USED WHEN THE LENGTH OF THE AUXILIARY LANE IS 2 MILES OR LESS.
  - ⑤ FOR TWO-LANE ENTRANCE RAMP, IF RIGHT LANE ENDS, USE TYPICAL ENTRANCE RAMP PAVEMENT MARKINGS.
  - ⑥ ONLY AND ARROWS EQUALLY SPACED, 500' (150 m) MAXIMUM SPACING, FULL SIZE LETTERS AND ARROW SHALL BE USED.
  - ⑦ CONTINUE 8" SOLID LANE LINE THROUGH EXIT TO END OF PAVED GORE.

MODEL: D:\ref\...  
 FILE: I:\M&E\_Plan\1108\EBID\1108.dwg  
 PLOT DATE: 3/4/2019

USER NAME	DESIGNED	REVISOR
DRAWN	CHECKED	DATE
PLOT SCALE	DATE	
PLOT DATE		

DESIGNED	REVISOR
REVISOR	REVISOR
REVISOR	REVISOR
REVISOR	REVISOR

STATE OF ILLINOIS  
DEPARTMENT OF TRANSPORTATION

MULTI-LANE FREEWAY PAVEMENT MARKING DETAILS			
SCALE: NONE	SHEET 1	OF 2 SHEETS	STA. TO STA.

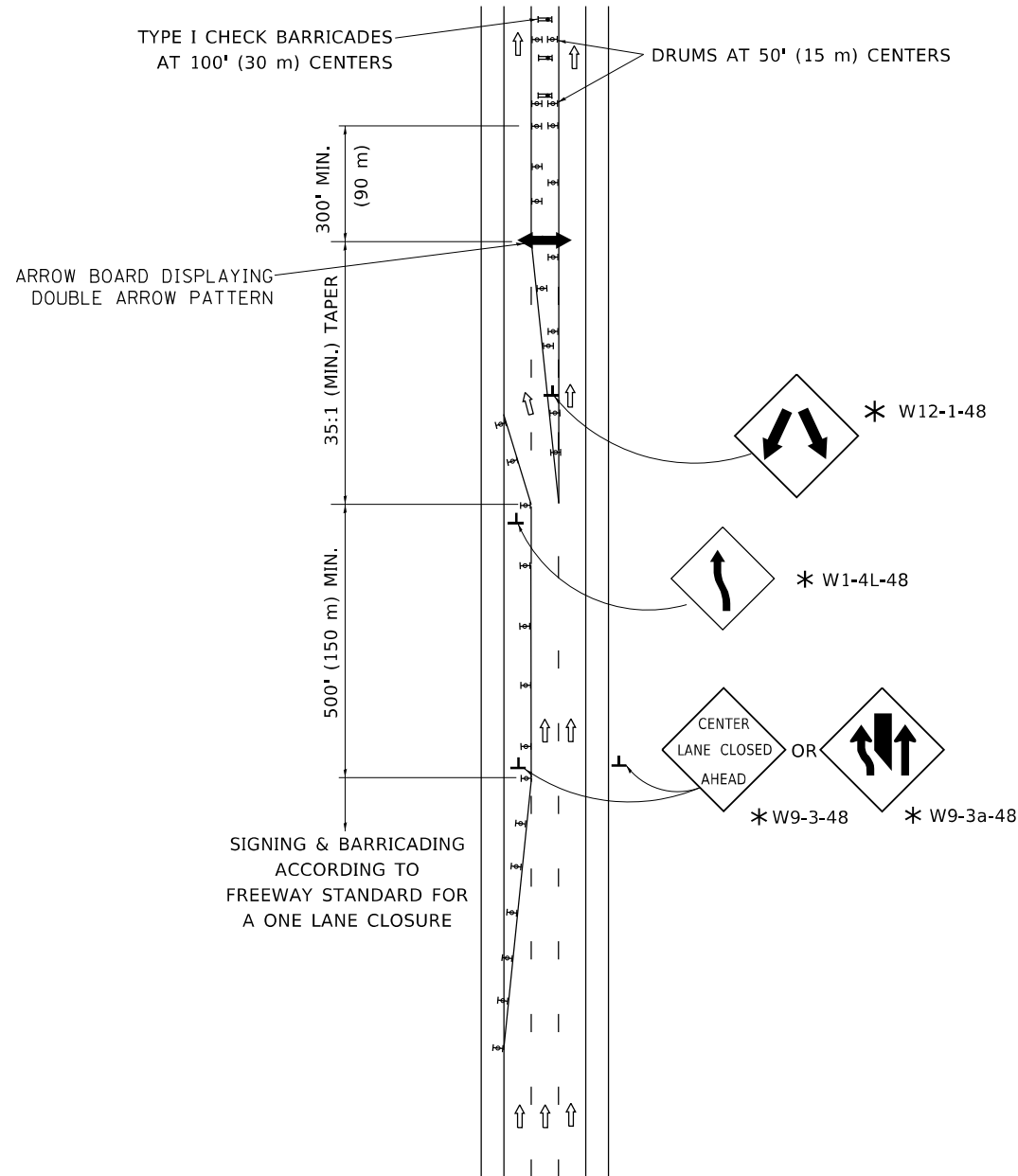
F.A. RTE.	SECTION	COUNTY	TOTAL SHEETS	SHEET NO.
57	2020-212-RS&T	COOK	229	225
TC-12		CONTRACT NO. 62M84		
ILLINOIS FED. AID PROJECT				



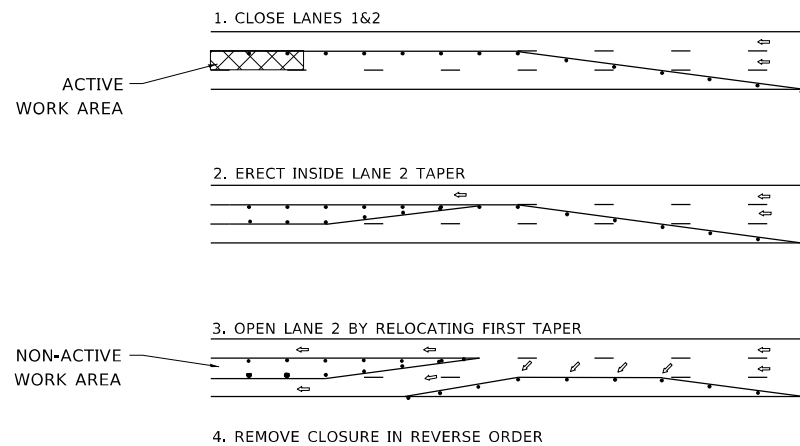




# CENTER LANE CLOSURE



### INSTALLATION SEQUENCE



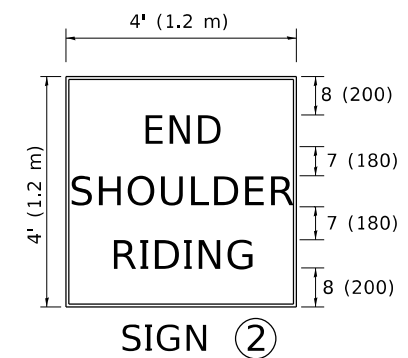
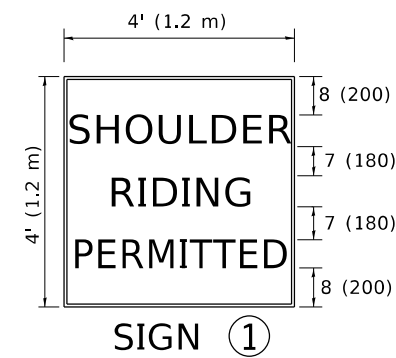
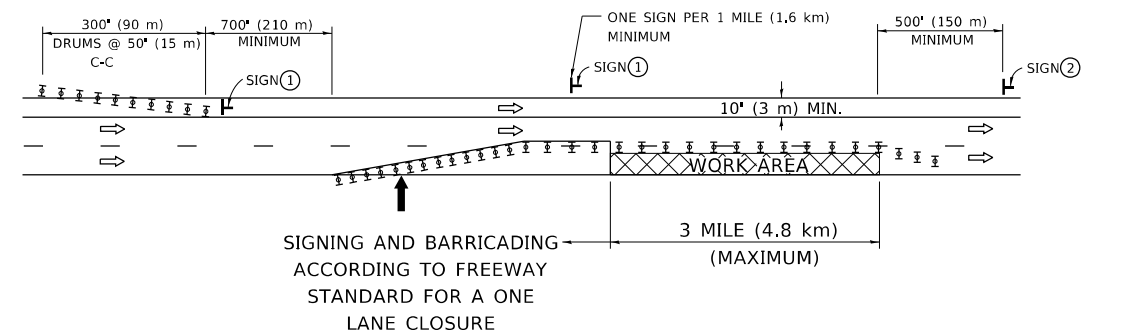
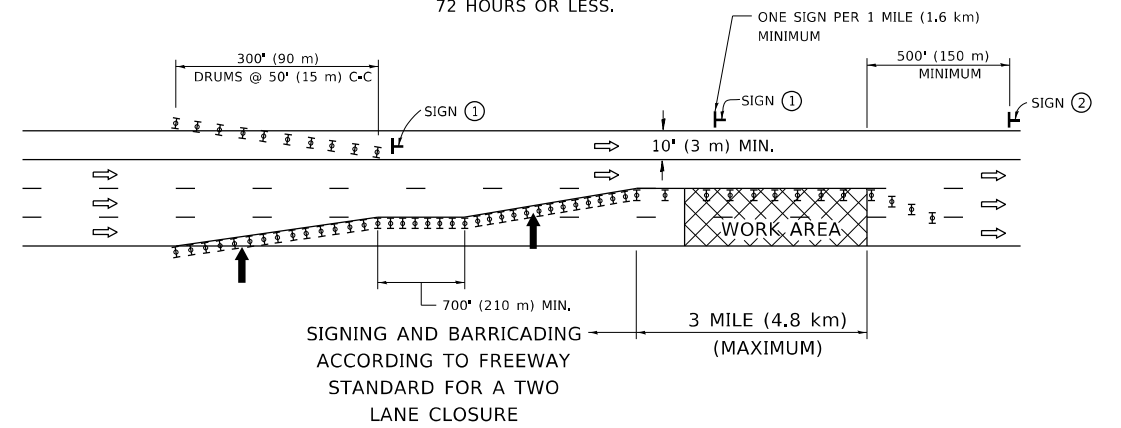
### NOTES:

1. DRUMS WITH STEADY BURN LIGHTS SHALL BE USED AT 50' (15 m) CENTERS ON ALL TAPERS AND TANGENTS IN ADVANCE OF WORK AREA.
2. CLOSURE SHALL BE USED ONLY FOR OPERATIONS LASTING 72 HOURS OR LESS.
3. CENTER LANE CLOSURE CONFIGURATION IS NOT TO BE USED WITH WORKERS PRESENT.

# SHOULDER LANE

### NOTE:

CLOSURE SHALL BE USED ONLY FOR OPERATIONS LASTING 72 HOURS OR LESS.



6 (150) SERIES "C" LEGEND  
BLACK LEGEND  
WHITE REFLECT. BACKGROUND  
1 (25) BORDER

### SYMBOLS

- ↑ DIRECTION OF TRAFFIC
- ➔ ARROWBOARD
- ▣ ACTIVE WORK AREA
- ⊥ SIGN ON PORTABLE OR PERMANENT SUPPORT \*
- ⊥ TYPE II BARRICADE, OR DRUM WITH MONO-DIRECTIONAL STEADY BURN LIGHT

ALL DIMENSIONS ARE IN INCHES (MILLIMETERS) UNLESS OTHERWISE SHOWN

\* ALL SIGNS SHALL BE MOUNTED AT A MINIMUM HEIGHT OF 5' (1.5 m).

MODEL: D:\ref\... FILE: I:\M&E\... PROJECT: ILLINOIS STATE DOT DOCUMENTS\DOT\_01\Faces\Berkel... PROJECT: ILLINOIS STATE DOT DOCUMENTS\DOT\_01\Faces\Berkel...

USER NAME	footemj	DESIGNED	-	REVISED	-	J.A.F. 04-03
DRAWN	-	REVISION	-	REVISED	-	S.P.B. 01-07
PLOT SCALE	50,0000 * / in.	CHECKED	-	REVISED	-	S.P.B. 12-09
PLOT DATE	3/4/2019	DATE	-	REVISED	-	

STATE OF ILLINOIS  
DEPARTMENT OF TRANSPORTATION

TRAFFIC CONTROL DETAILS FOR FREEWAY  
CENTER LANE CLOSURE SHOULDER LANE

SCALE: NONE SHEET 1 OF 1 SHEETS STA. TO STA.

F.A. RTE.	SECTION	COUNTY	TOTAL SHEETS	SHEET NO.
57	2020-212-RS&T	COOK	229	229
TC-25			CONTRACT NO. 62M84	
ILLINOIS FED. AID PROJECT				