

01-21-2022 LETTING ITEM 136

FOR INDEX OF SHEETS & STATE STANDARDS
SEE SHEET NO. 2

STATE OF ILLINOIS
DEPARTMENT OF TRANSPORTATION
DIVISION OF HIGHWAYS

**PROPOSED
HIGHWAY PLANS**

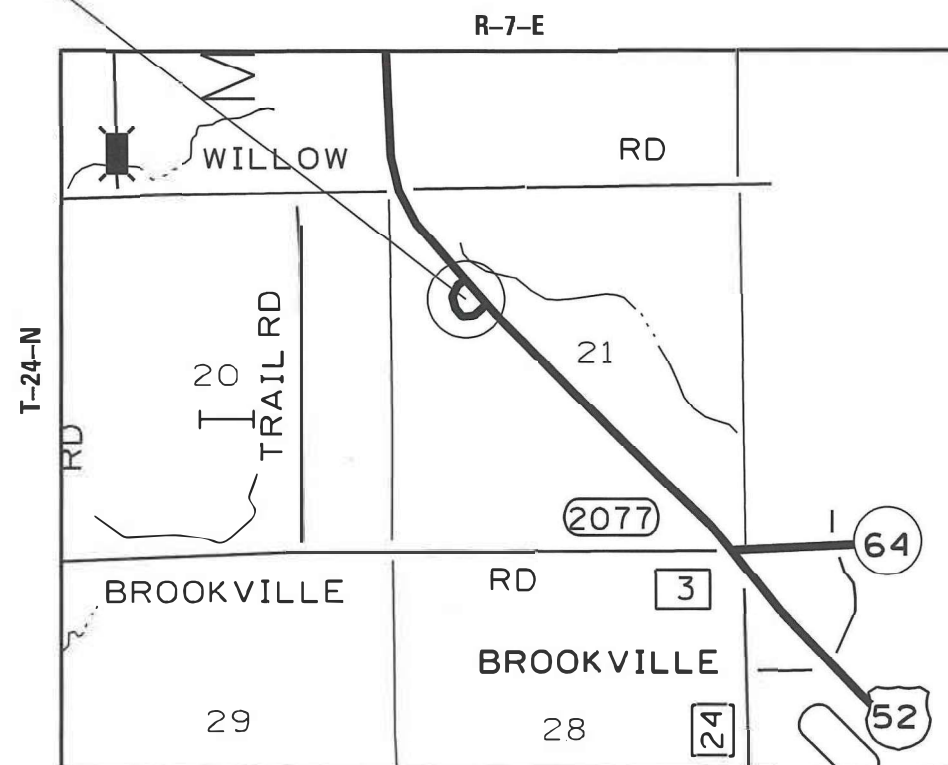
ROUTE OR64
SECTION RA RS-01
CARROLL COUNTY
C-92-020-22

F.A.P. RTE.	SECTION	COUNTY	TOTAL SHEETS	SHEET NO.
OR64	RA RS-01	CARROLL	5	1

CONTRACT NO. 64R36
D-92-001-22



PROJECT LOCATION
REST AREA
US 52/L 64



TOWNSHIP (SECTION):
LIMA (21)

J.U.L.I.E.
JOINT UTILITY LOCATION INFORMATION FOR EXCAVATION
1-800-892-0123

GROSS LENGTH OF PROJECT = N/A FOOT = N/A MILES
NET LENGTH OF PROJECT = N/A FOOT = N/A MILES

STATE OF ILLINOIS
DEPARTMENT OF TRANSPORTATION
DIVISION OF HIGHWAYS
SUBMITTED October 15, 20 21
[Signature]
REGION ENGINEER

December 10 20 21
[Signature]
ENGINEER OF DESIGN AND ENVIRONMENT
December 10 20 21
[Signature]
DIRECTOR OF HIGHWAYS PROJECT IMPLEMENTATION

PRINTED BY THE AUTHORITY
OF THE STATE OF ILLINOIS

PROJECT ENGINEER: SCOTT KULLERSTRAND

SQUAD LEADER: LANCE NICKLAUS 815-284-5407

INDEX

- 1 Cover Sheet
- 2 Index of Sheets / State Standards
- 3 Summary of Quantities
- 4 General Notes
- 5 Plan Sheet

STATE STANDARDS

- 701006-05 OFF-ROAD OPERATIONS, 2L, 2W, 15'(4.5m) TO 24"(600mm) FROM PAVEMENT EDGE
- 701301-04 LANE CLOSURE, 2L, 2W, SHORT TIME OPERATIONS
- 701901-08 TRAFFIC CONTROL DEVICES
- 720011-01 METAL POST FOR SIGNS, MARKERS AND DELINEATORS
- 728001-01 TELESCOPING STEEL SIGN SUPPORT
- 729001-01 APPLICATIONS OF TYPES A AND B METAL POST (FOR SIGNS & MARKERS)

DISTRICT STANDARDS

- 34.1 Work Zone Sign Details
- 97.4 Subgrade Replacement

SUMMARY OF QUANTITIES

ROUTE OR64
SECTION RA RS-01
CARROLL COUNTY
CONTRACT # 64R36
SHEET 3 OF 5

100% State
0005

CODE NO.	ITEM	UNIT	TOTAL QUANTITY
30300001	AGGREGATE SUBGRADE IMPROVEMENT	CU YD	17
40600290	BITUMINOUS MATERIALS (TACK COAT)	POUND	1250
40604050	HOT-MIX ASPHALT SURFACE COURSE, IL 9.5, MIX "C", N50	TON	311
44000157	HOT-MIX ASPHALT SURFACE REMOVAL, 2"	SQ YD	2778
48102100	AGGREGATE WEDGE SHOULDER, TYPE B	TON	86
67100100	MOBILIZATION	L SUM	1
Z0028415	GEOTECHNICAL REINFORCEMENT	SQ YD	450

* Specialty Items

GENERAL NOTES

The following Mixture Requirements are applicable for this project:

Location(s):	Rest Area
Mixture Use(s):	Surface
PG:	PG 58-28
Design Air Voids:	4.0 @ N50
Mixture Composition (Mixture Gradation):	IL 9.5
Friction Aggregate:	"C"
Mixture Weight:	112lb/sqyd/in
Quality Management Program:	QC / QA
Sublot Size:	N/A
Number of Roller Passes ¹⁾ :	N/A

1) When a number of roller passes is specified, the Contractor may opt to use intelligent compaction in lieu of density testing under the Quality Control for Performance (QCP) program.

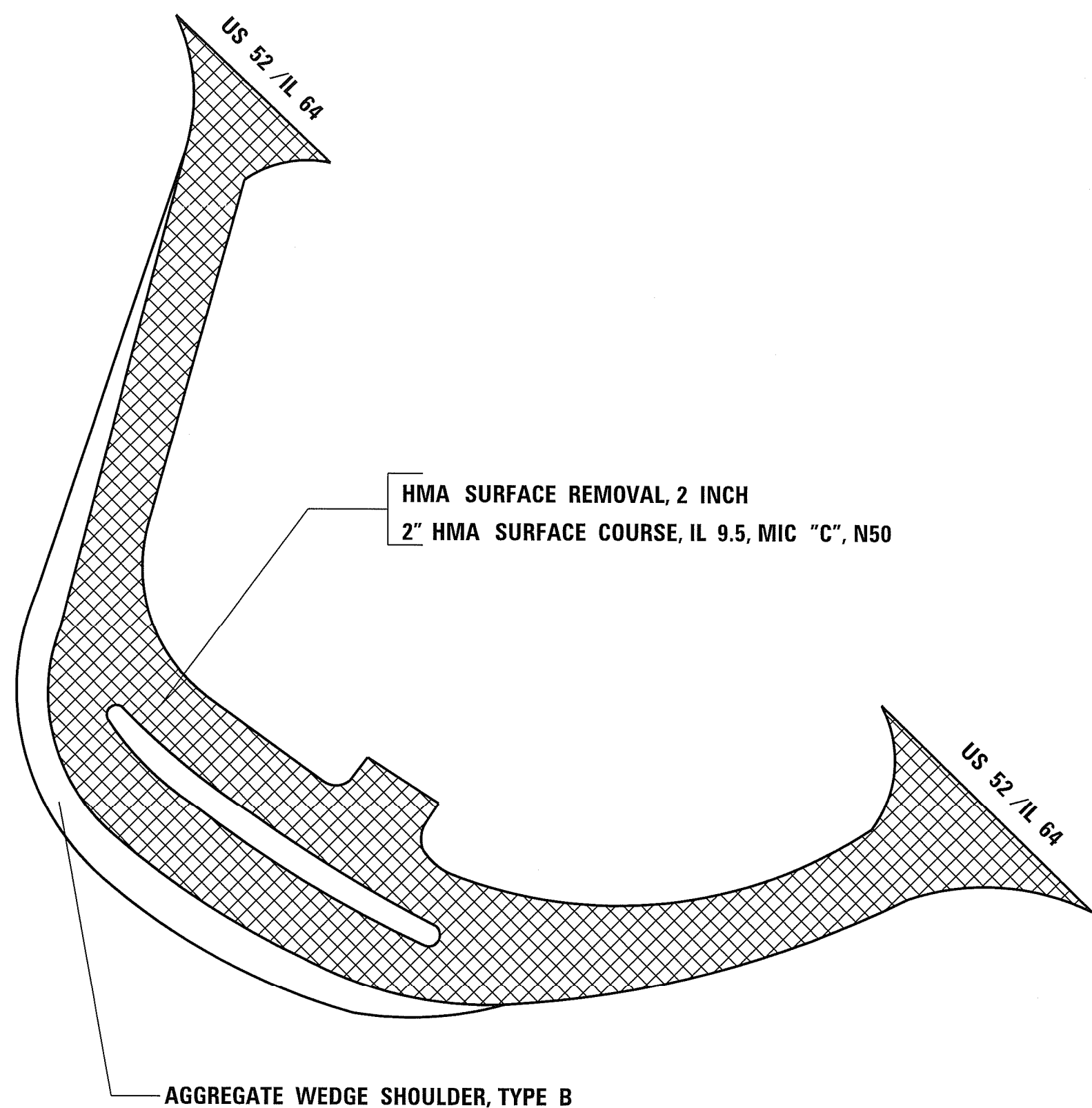
The area to be tacked or primed shall be limited to that which can be covered with HMA on the next day's production, but no more than five days in advance of the placement of the HMA, unless approved by the Engineer.

A quantity of Aggregate Subgrade Improvement and Geotechnical Reinforcement has been included in the plans at the request of the Districts Geotechnical Unit and shall be used as directed by the RE.

The rest area shall be closed for the duration of the project. No traffic shall be allowed on the milled surface and all resurfacing shall be completed before the rest area is reopened to traffic.

Coring on the project ranged from 3.5 to 5.5 with an average thickness of 4.55 inches on an aggregate subbase.

FILE NAME = 64R36.GN.DOCX	USER NAME =	DESIGNED - Engineering Systems	REVISED -	STATE OF ILLINOIS DEPARTMENT OF TRANSPORTATION	GENERAL NOTES	ROUTE	SECTION	COUNTY	TOTAL SHEETS	SHEET NO.	
	PLOT SCALE =	DRAWN -	REVISED -			OR64	RA RS-01	CARROLL			1
	PLOT DATE = 10/13/2021 1:12 PM	CHECKED -	REVISED -			CONTRACT NO. 64R36			ILLINOIS		FED. AID PROJECT
	DATE - 10/12/2021 3:21 PM	REVISED -		SCALE:	SHEET NO.	OF	SHEETS	STA.	TO STA.		



US 52 / IL 64

US 52 / IL 64

HMA SURFACE REMOVAL, 2 INCH
2" HMA SURFACE COURSE, IL 9.5, MIC "C", N50

AGGREGATE WEDGE SHOULDER, TYPE B

MODEL: default
FILE NAME: C:\Micklauser\23_1010.dwg, T12.rvt, 20210905.dwg

USER NAME = Nicklauste	DESIGNED -	REVISED -
	DRAWN -	REVISED -
PLOT SCALE = 514.9813 ' / in.	CHECKED -	REVISED -
PLOT DATE = Oct-05-2021 02:42:38 PM	DATE -	REVISED -

STATE OF ILLINOIS
DEPARTMENT OF TRANSPORTATION

SCALE:	SHEET	OF	SHEETS	STA.	TO STA.
--------	-------	----	--------	------	---------

F.A. RTE.	SECTION	COUNTY	TOTAL SHEETS	SHEET NO.
OR64	RA R5-01	CARROLL		
ILLINOIS FED. AID PROJECT			CONTRACT NO. 64R36	