

CONSTRUCTION PLANS FOR CASEY MUNICIPAL AIRPORT

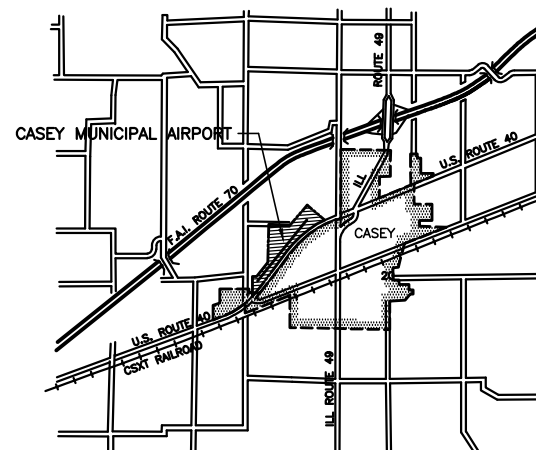
CASEY, CLARK COUNTY, ILLINOIS

EDGE LIGHTING ON RUNWAY 4-22 AND TAXIWAYS

SUMMARY OF QUANTITIES				
ITEM NO.	DESCRIPTION	UNIT	AS BID QUANTITY	AS BUILT QUANTITY
AR108158	1/C #8 5KV UG CABLE IN UD	LIN. FT.	13,635	
AR109301	4 KW REGULATOR, STYLE 1	EACH	1	
AR109311	7.5 KW REGULATOR, STYLE 1	EACH	1	
AR109903	REMOVE REGULATOR	EACH	2	
AR110316	6" STEEL DUCT - JACKED	LIN. FT.	95	
AR125411	MITL, STAKE MOUNTED - LED	EACH	53	
AR125416	MITL, BASE MOUNTED - LED	EACH	6	
AR125442	TAXI GUIDANCE SIGN, 2 CHARACTER	EACH	3	
AR125443	TAXI GUIDANCE SIGN, 3 CHARACTER	EACH	1	
AR125445	TAXI GUIDANCE SIGN, 5 CHARACTER	EACH	1	
AR125505	MIRL, STAKE MOUNTED	EACH	30	
AR125510	MIRL, BASE MOUNTED	EACH	10	
AR125540	MI THRESHOLD LIGHT STAKE MTD	EACH	16	
AR125901	REMOVE STAKE MOUNTED LIGHT	EACH	83	
AR125902	REMOVE BASE MOUNTED LIGHT	EACH	18	
AR125904	REMOVE TAXI GUIDANCE SIGN	EACH	2	
AR150530	TRAFFIC MAINTENANCE	L. SUM	1	
AR800250	2-1/C #8 5 KV UG CABLE IN UD	LIN. FT.	1,595	

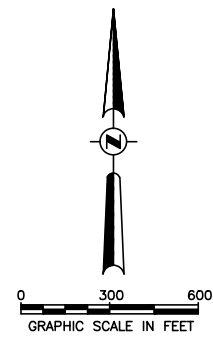
ILLINOIS PROJECT NO. 1H8-4369
SBG PROJECT NO. 3-17-SBGP-XX

DECEMBER 5, 2014



INDEX OF SHEETS	
NO.	DESCRIPTION
1	COVER SHEET
2	IMPROVEMENT AND SAFETY PLAN
3	EDGE LIGHTING UNIT REMOVAL PLAN
4-5	RUNWAY 4-22 LIGHTING LAYOUT
6-7	RUNWAY 4-22 AND TAXIWAY LIGHTING LAYOUT
8-9	TYPICAL LIGHTING DETAILS

<p>EXPIRES 11/30/15 ENGINEER'S SEAL</p>	PLANS PREPARED BY : HUTCHISON ENGINEERING, INC. JACKSONVILLE, ILLINOIS	CITY OF CASEY, ILLINOIS
	SUBMITTED <i>[Signature]</i> DATE <u>October 24, 2014</u>	APPROVED <i>[Signature]</i> MAYOR DATE <u>11/14/14</u>



LEGEND

- LOCATIONS WHERE EDGE LIGHTING IS TO BE INSTALLED ADJACENT TO PAVEMENT
- LOCATION OF LIGHTED BARRICADES @15± CTRS. TO CLOSE A PAVEMENT TO AIRCRAFT

CRITICAL POINTS			
NO.	LATITUDE	LONGITUDE	ELEVATION
CP-1	39° 17' 59.69"	88° 00' 22.23"	649.3
CP-2	39° 18' 01.45"	88° 00' 20.40"	649.4
CP-3	39° 17' 55.33"	88° 00' 22.68"	649.9
CP-4	39° 17' 59.31"	88° 00' 18.54"	649.3

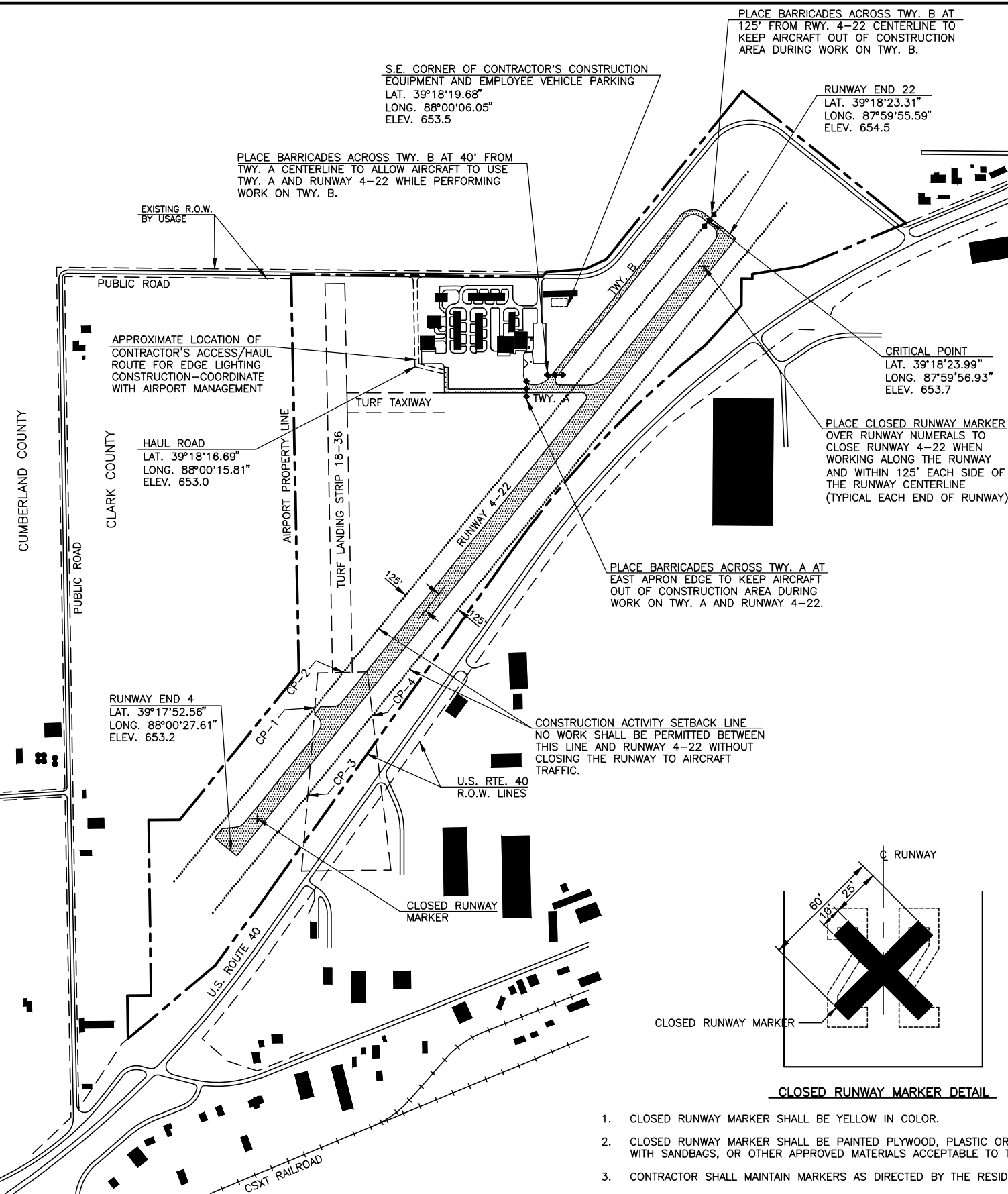
GENERAL NOTES

1. THE CONTRACTOR SHALL BE RESPONSIBLE FOR PROTECTING UTILITY PROPERTY FROM CONSTRUCTION OPERATIONS. PRIOR TO STARTING WORK, THE CONTRACTOR SHALL CONTACT J.U.L.I.E. (JOINT UTILITY LOCATING INFORMATION FOR EXCAVATORS) PHONE 1-800-892-0123 OR 811 TO ARRANGE FOR LOCATION OF UTILITIES IN THE WORK AREA. A MINIMUM OF FORTY-EIGHT HOURS ADVANCE NOTICE IS REQUIRED FOR NON-EMERGENCY WORK.

COUNTY - CLARK
 CITY - CASEY
 TOWNSHIP - T. 10 N., R. 14 W. 2nd P.M. (CASEY)
 SECTION NO. - 19

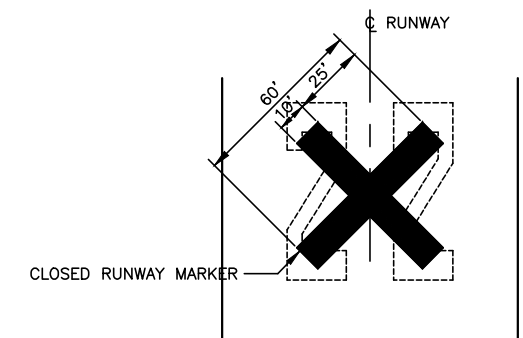
2. AVAILABLE RECORDS INDICATE THAT THE FOLLOWING UTILITIES ARE LOCATED WITHIN THE GENERAL AREA OF THIS IMPROVEMENT :

TELEPHONE : ALLTEL ILLINOIS, INC.
 WATER : CITY OF CASEY, ILLINOIS - UTILITIES DEPARTMENT
 ELECTRICAL : CITY OF CASEY, ILLINOIS - UTILITIES DEPARTMENT



CONSTRUCTION PROCEDURE NOTES

1. ALL CONTRACTOR EMPLOYEES WILL PARK THEIR PERSONAL VEHICLES IN THE AREA DESIGNATED BY THE AIRPORT MANAGER FOR USE AS A VEHICLE PARKING AREA. THE CONTRACTOR WILL BE RESPONSIBLE FOR TRANSPORTING EMPLOYEES TO THE PROPOSED CONSTRUCTION SITE. ONLY AUTHORIZED CONTRACTOR VEHICLES WILL BE ALLOWED ON THE AIR OPERATIONS AREA OF THE AIRPORT AND ON THE CONSTRUCTION SITE.
2. THE CONTRACTOR SHALL FURNISH ALL EMPLOYEES WITH SOME TYPE OF TAG OR GARMENT TO IDENTIFY THEM AS BEING PART OF THE CONSTRUCTION CREW.
3. FLAGS WILL BE REQUIRED ON ALL CONTRACTOR'S VEHICLES AND EQUIPMENT USED ON THE AIRPORT OPERATIONS AREA AND CONSTRUCTION SITE. THE FLAGS SHALL BE THREE (3) FOOT SQUARE CHECKERED FLAGS (INTERNATIONAL ORANGE AND WHITE) DISPLAYED IN FULL VIEW ABOVE THE VEHICLE.
4. THE CONTRACTOR WILL USE THE DESIGNATED HAUL ROUTE AND EQUIPMENT STORAGE AREA SHOWN ON THIS SHEET. IT WILL BE THE CONTRACTOR'S RESPONSIBILITY TO MAINTAIN THE DESIGNATED HAUL ROUTE AND EQUIPMENT STORAGE AREA FOR THE DURATION OF THE PROJECT. ANY DAMAGE TO EXISTING PAVEMENTS USED TO HAUL MATERIAL TO THE CONSTRUCTION SITE WILL BE REPAIRED BY THE CONTRACTOR AT HIS OWN EXPENSE TO THE SATISFACTION OF THE AIRPORT MANAGER AND THE RESIDENT ENGINEER.
5. CONSTRUCTION ACTIVITY CONTROL AND OPERATION AREA PROTECTION SHALL BE ACCOMPLISHED IN ACCORDANCE WITH FAA ADVISORY CIRCULAR NO. 150/5370-2F.
6. THE MAXIMUM CONSTRUCTION EQUIPMENT HEIGHT UTILIZED ON THE AIRPORT FOR THIS PROJECT SHALL BE 15'.
7. THIS PROJECT CONSISTS OF WORK TO INSTALL EDGE LIGHTING ON RUNWAY 4-22 AND TAXIWAYS.
8. THIS PROJECT WILL DISTURB LESS THAN 1 ACRE OF LAND.
9. THE EXISTING AIRPORT REFERENCE CODE FOR RUNWAY 4-22 IS B-II (150' WIDE RSA).
10. RUNWAY 4-22 SHALL BE CLOSED TO AIRCRAFT TRAFFIC WHILE THE EDGE LIGHTING SYSTEM COMPONENTS ARE BEING INSTALLED WITHIN 125' OF THE RUNWAY 4-22 CENTERLINE.
11. AIRCRAFT SHALL USE THE TURF TAXIWAY AND TURF RUNWAY LANDING STRIP 18-36 WHILE RUNWAY 4-22 IS CLOSED TO PERFORM THE INSTALLATION OF THE EDGE LIGHTING SYSTEMS.
12. TAXIWAY B CAN BE CLOSED TO AIRCRAFT BY BARRICADING BOTH ENDS OF THE TAXIWAY IN ORDER TO PERFORM WORK ON TAXIWAY B WHILE OPENING TAXIWAY A AND RUNWAY 4-22 FOR USE BY AIRCRAFT. THE CLOSURE OF TAXIWAY B WHILE RUNWAY 4-22 IS OPEN SHALL NOT EXCEED THREE DAYS AT A TIME.
13. THE CONTRACTOR SHALL GIVE THE AIRPORT MANAGEMENT THREE DAYS NOTICE PRIOR TO STARTING ANY CONSTRUCTION WHICH WOULD NECESSITATE CLOSURE OF RUNWAYS AND TAXIWAYS. AIRPORT MANAGEMENT SHALL GIVE PROPER NOTICE (NOTAMS) TO THE NEAREST FAA FLIGHT SERVICE STATION PRIOR TO THE START OF CONSTRUCTION AND CLOSURE OF RUNWAYS AND TAXIWAYS.
14. THE CONTRACTOR SHALL OBSERVE EXTRA PRECAUTION AND MONITOR LOCAL AIRCRAFT OPERATIONS IN THE VICINITY WHEN PERFORMING WORK ON RUNWAY 4-22 IN THE AREA WHERE THE TURF LANDING STRIP EXTENDED SOUTHERLY WOULD INTERSECT WITH PAVED RUNWAY 4-22. THIS AREA IS LOCATED APPROXIMATELY BETWEEN STA. 111+00 AND STA. 113+00 ALONG RUNWAY 4-22. THE CONTRACTOR SHALL PROVIDE A FLAGMAN WITH A RADIO TUNED TO FREQUENCY 122.8 TO MONITOR THE OPERATIONS BY RADIO AND VISUALLY SO AS TO DIRECT CONSTRUCTION EQUIPMENT AND PERSONNEL AWAY FROM THIS AREA WHEN ARRIVING OR DEPARTING AIRCRAFT CROSS ABOVE RUNWAY 4-22 IN THIS LOCATION.

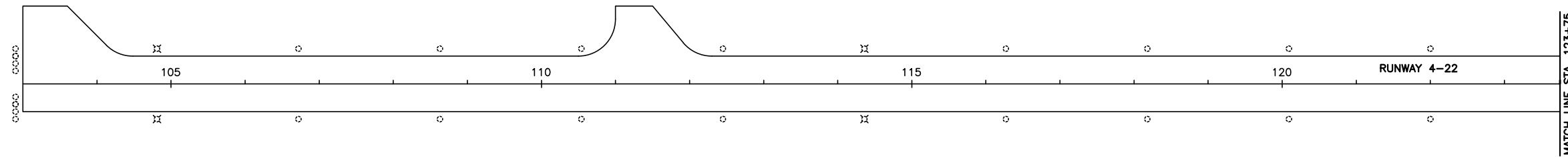
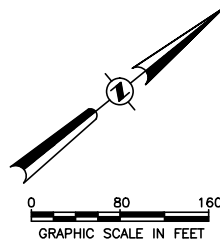


CLOSED RUNWAY MARKER DETAIL

1. CLOSED RUNWAY MARKER SHALL BE YELLOW IN COLOR.
2. CLOSED RUNWAY MARKER SHALL BE PAINTED PLYWOOD, PLASTIC OR FABRIC SHEETING WEIGHTED DOWN WITH SANDBAGS, OR OTHER APPROVED MATERIALS ACCEPTABLE TO THE ENGINEER.
3. CONTRACTOR SHALL MAINTAIN MARKERS AS DIRECTED BY THE RESIDENT ENGINEER.
4. THE COST OF FURNISHING, PLACING, MAINTAINING, AND REMOVING CLOSED RUNWAY MARKERS SHALL BE PAID FOR UNDER ITEM AR150530 TRAFFIC MAINTENANCE.

CASEY MUNICIPAL AIRPORT CASEY, ILLINOIS	
IMPROVEMENT AND SAFETY PLAN	
HUTCHISON ENGINEERING, INC. JACKSONVILLE, ILLINOIS	
DRAWN BY: R.L.R. & J.C.W. DATE : OCTOBER, 2014	ILL. PROJ. NO. 1H8-4369 SBG PROJ. NO. 3-17-SBGP-XX

EXISTING EDGE LIGHTING UNIT REMOVAL SCHEDULE			
DESCRIPTION	REMOVE BASE MOUNTED LIGHT EACH	REMOVE STAKE MOUNTED LIGHT EACH	REMOVE TAXI GUIDANCE SIGN EACH
EXISTING RUNWAY 4-22 CIRCUIT	10	46	
EXISTING TAXIWAY CIRCUIT 1 (TWY. A & B)	8	37	2
TOTALS	18	83	2

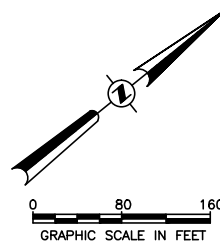
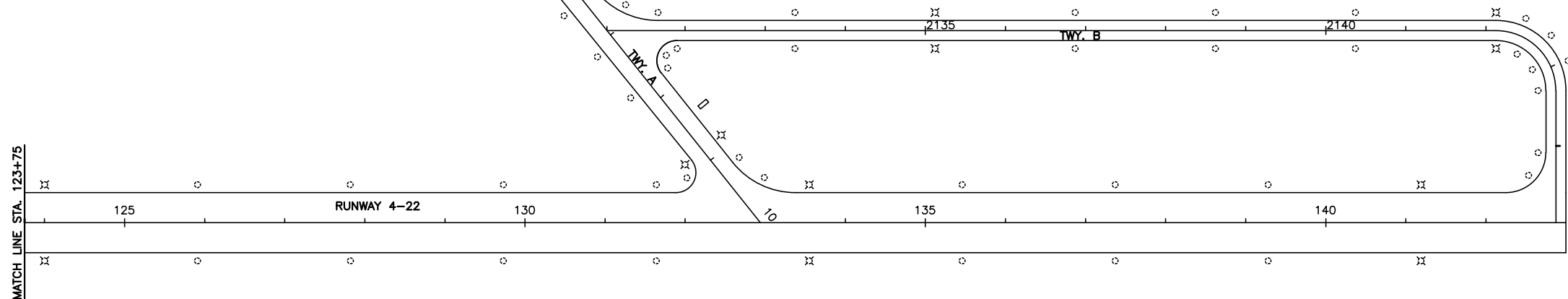
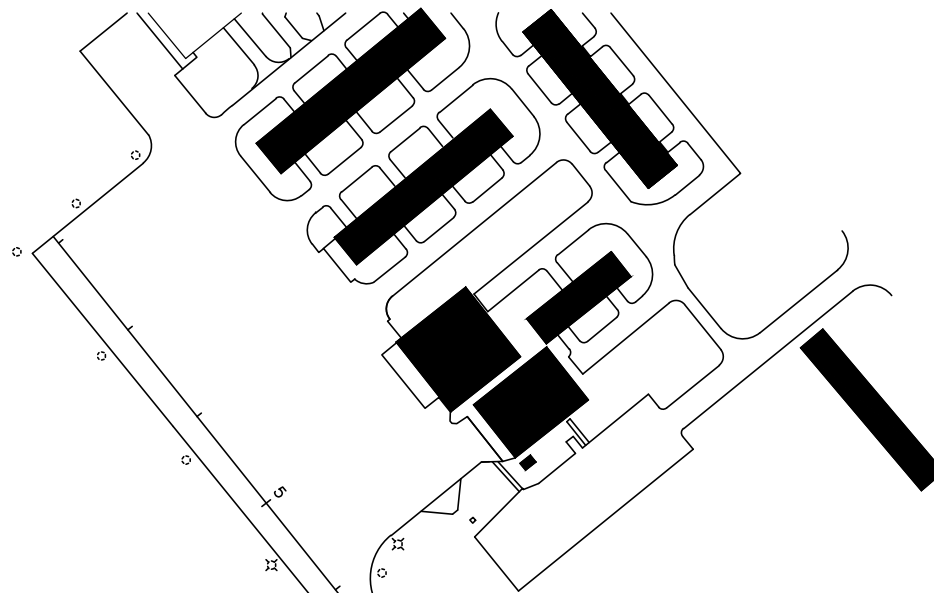


LEGEND

- X EXISTING BASE MOUNTED LIGHT TO BE REMOVED
- EXISTING STAKE MOUNTED LIGHT TO BE REMOVED
- EXISTING TAXI GUIDANCE SIGN TO BE REMOVED

NOTES :

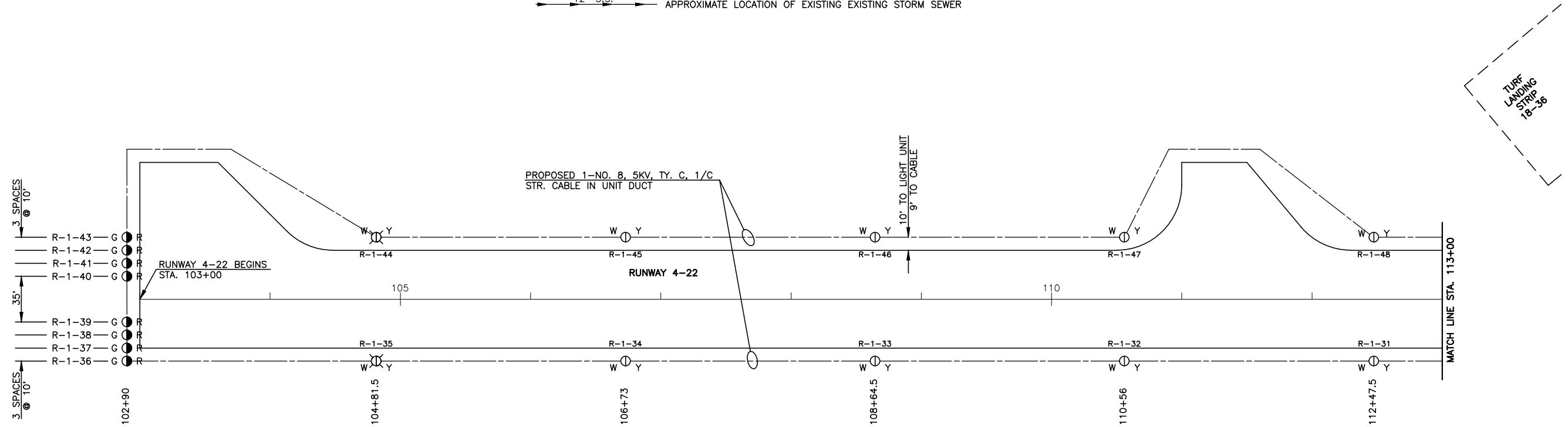
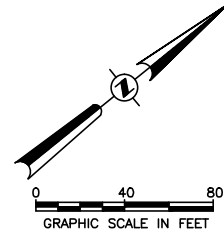
1. ALL EXISTING GUIDANCE SIGNS INCLUDING TRANSFORMERS AND STEEL BASES WITH CONCRETE BACKFILL THAT ARE REMOVED SHALL BE DISPOSED OF BY THE CONTRACTOR OFF THE AIRPORT PROPERTY. THE CONTRACTOR SHALL SALVAGE 8 OF THE EXISTING MEDIUM INTENSITY BASE MOUNTED LIGHT FIXTURES AND 24 OF THE EXISTING MEDIUM INTENSITY STAKE MOUNTED FIXTURES INCLUDING TRANSFORMERS FOR USE BY THE AIRPORT AS MAINTENANCE REPAIR PARTS. THE SALVAGED UNITS SHALL BECOME THE PROPERTY OF THE AIRPORT AND SHALL BE TRANSPORTED BY THE CONTRACTOR TO A LOCATION ON THE AIRPORT DESIGNATED BY THE AIRPORT MANAGEMENT AND DEPOSITED AT THE LOCATION FOR STORAGE. THE REMAINDER OF THE MEDIUM INTENSITY FIXTURES THAT ARE REMOVED SHALL BE DISPOSED OF BY THE CONTRACTOR OFF THE AIRPORT PROPERTY. THE DISPOSAL LOCATION SHALL BE ARRANGED AND/OR PROVIDED BY THE CONTRACTOR.
2. THE UNDERGROUND CABLE TO THE EXISTING EDGE LIGHTS SHALL BE ABANDONED WITH THE EXCEPTION THAT ALL EXISTING CABLE BEING REPLACED THAT IS IN THE SAME LOCATION IN TRENCH OR DUCT AS THE PROPOSED CABLE SHALL BE REMOVED FROM THE TRENCH OR DUCT INCLUDING THE EXISTING UNIT DUCT THAT CONTAINS THE CABLE. THE CABLE AND UNIT DUCT REMOVED SHALL BE DISPOSED OF OFF THE AIRPORT PROPERTY BY THE CONTRACTOR AND SAID REMOVAL AND DISPOSAL SHALL BE CONSIDERED INCIDENTAL TO THE NEW CABLE INSTALLATION.
3. AT A MINIMUM, THE EXISTING CABLE AND UNIT DUCT BEING ABANDONED SHALL BE REMOVED TO A DISTANCE OF 3 FEET EACH SIDE OF A NEW LIGHTING FIXTURE LOCATION.
4. AT LOCATIONS WHERE A LIGHTING UNIT IS SHOWN TO BE REMOVED AND ALL OR A PORTION OF THE FIXTURE ABOVE GROUND IS MISSING, THE BASE OR STAKE AND TRANSFORMER SHALL BE DUG UP AND REMOVED. THIS REMOVAL SHALL CONSTITUTE AND BE PAID FOR AS A COMPLETE LIGHTING UNIT REMOVAL.



CASEY MUNICIPAL AIRPORT CASEY, ILLINOIS	
EDGE LIGHTING UNIT REMOVAL PLAN	
HUTCHISON ENGINEERING, INC. JACKSONVILLE, ILLINOIS	
DRAWN BY: R.L.R. & J.C.W. DATE : OCTOBER, 2014	ILL. PROJ. NO. 1H8-4369 SBG PROJ. NO. 3-17-SBGP-XX

LEGEND

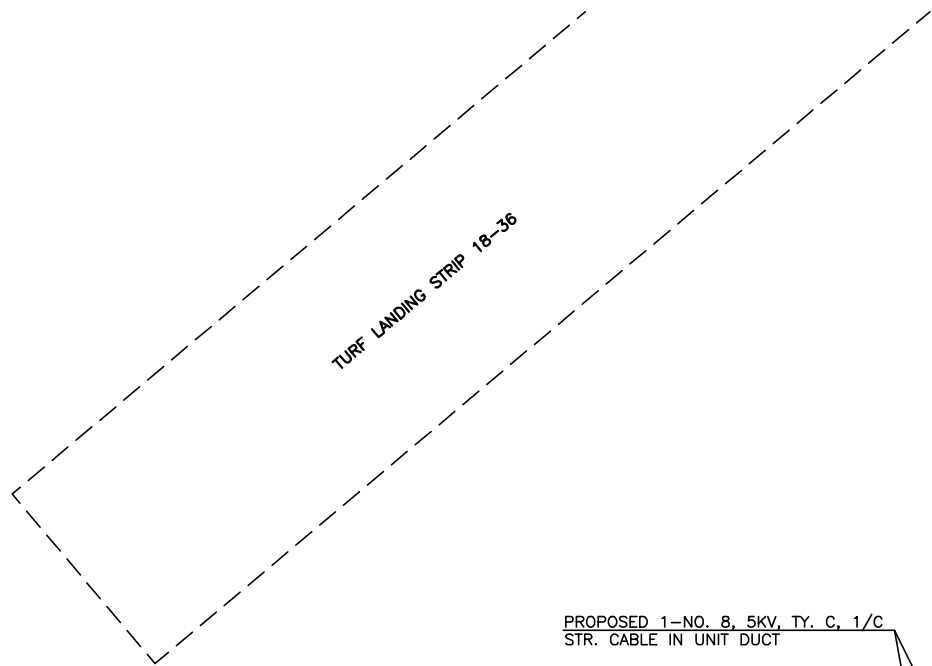
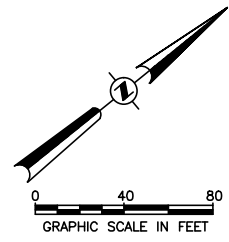
- R ● G PROPOSED M.I. THRESHOLD LIGHT - 180° RED/180° GREEN (STK. MTD.), L-861SE
- ⊙ PROPOSED M.I. RUNWAY LIGHT - 180° YELLOW/180° WHITE (STK. MTD.), L-861
- ⊗ PROPOSED M.I. RUNWAY LIGHT - 180° YELLOW/180° WHITE (BASE MTD.), L-861
- PROPOSED M.I. TAXIWAY LIGHT (STK. MTD.), L-861T(L)
- ⊗ PROPOSED M.I. TAXIWAY LIGHT (BASE MTD.), L-861T(L)
- == EXISTING UNDERGROUND DUCT (2-WAY UNLESS OTHERWISE NOTED)
- PROPOSED UNDERGROUND DUCT
- C TAXI GUIDANCE SIGN
YELLOW LEGEND ON BLACK BACKGROUND WITH YELLOW BORDER
- 15-31 TAXI GUIDANCE SIGN
WHITE LEGEND ON RED BACKGROUND
- C → TAXI GUIDANCE SIGN
BLACK LEGEND ON YELLOW BACKGROUND
- PROPOSED TAXI GUIDANCE SIGN
- PROPOSED CABLE FOR AIRFIELD LIGHTING
(1-NO. 8 5KV, TY. C, STR. IN UNIT DUCT)
- PROPOSED CABLE FOR AIRFIELD LIGHTING HOME RUN
(2-NO. 8 5KV, TY. C, STR. IN COMMON UNIT DUCT)
- T — APPROXIMATE LOCATION OF EXISTING TELEPHONE CABLE
- E — APPROXIMATE LOCATION OF EXISTING UNDERGROUND ELECTRICAL UTILITY CO. PRIMARY CABLE
- W — APPROXIMATE LOCATION OF EXISTING WATERMAIN
- 12" S.S. — APPROXIMATE LOCATION OF EXISTING EXISTING STORM SEWER



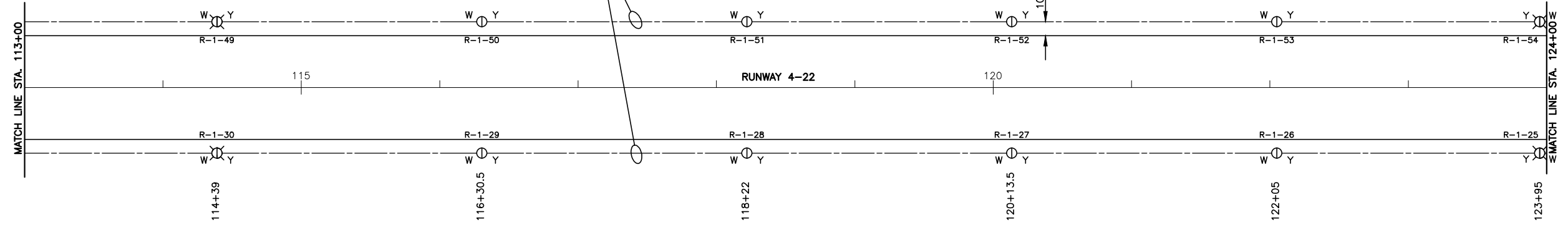
GENERAL NOTES

1. ALL RUNWAY AND TAXIWAY EDGE LIGHTS SHALL BE INSTALLED 10' FROM THE EDGE OF PAVEMENT. ALL TAXI GUIDANCE SIGNS SHALL BE INSTALLED 15' FROM THE EDGE OF PAVEMENT.
2. TRENCH/CABLE QUANTITIES WERE DETERMINED UTILIZING LINEAR DISTANCES BETWEEN CONSECUTIVE POINTS AND THE NEAREST LIGHT TO THE DUCT OPENING.
3. THE APPROXIMATE LOCATION OF UNDERGROUND CABLES AS INDICATED IN THESE PLANS HAS BEEN OBTAINED FROM EXISTING RECORDS. NEITHER THE OWNER NOR THE ENGINEER ASSUMES ANY RESPONSIBILITY IN RESPECT TO THE ACCURACY OR SUFFICIENCY OF THE INFORMATION AND THERE IS NO GUARANTEE, EITHER EXPRESSED OR IMPLIED, THAT THE CONDITIONS INDICATED ARE REPRESENTATIVE OF THOSE TO BE ENCOUNTERED IN THE CONSTRUCTION.
4. THE APPROXIMATE LOCATION OF VARIOUS AIRFIELD LIGHTING SYSTEM CABLES IS SHOWN FOR THE CONTRACTOR'S INFORMATION. IT WILL BE THE CONTRACTOR'S RESPONSIBILITY TO LOCATE THE EXISTING CABLES IN THE WORK AREAS AND MAKE HIS OWN DETERMINATION AS TO THE NUMBER OF CABLES EXISTING IN SAID AREAS AND AS TO THE CIRCUIT THAT THE CABLES ARE ASSOCIATED WITH. CAUTION SHALL BE EXERCISED WHEN TRENCHING, EXCAVATING DUCT ENDS, ETC. TO AVOID CUTTING THE EXISTING ACTIVE CIRCUIT CABLES. ANY EXISTING ACTIVE CABLE DAMAGED SHALL BE REPAIRED BY THE CONTRACTOR AT HIS OWN EXPENSE.
5. LETTERS AND NUMBERS SHOWN ADJACENT TO AN EDGE LIGHT OR SIGN (R-1-21, T-2-31) INDICATE THE LIGHT NUMBER TO BE ATTACHED TO THE LIGHTING UNIT ON AN IDENTIFICATION TAG. SEE THE IDENTIFICATION TAG DETAIL SHOWN IN THESE PLANS.
6. THE CONTRACTOR SHALL APPLY AN ANTI-SEIZING COMPOUND TO THE BOLTS FOR THE BASE PLATES AND TO THE THREADED COUPLINGS OF THE LIGHTING EQUIPMENT WHEN ASSEMBLING THE EQUIPMENT.
7. THE PROPOSED UNDERGROUND CABLE BETWEEN CONSECUTIVE LIGHTING UNITS SHALL BE INSTALLED BY PLOWING FACTORY ASSEMBLED CABLE IN UNIT DUCT IN PLACE.
8. IN LOCATIONS WHERE TWO OR MORE CABLES ARE INSTALLED IN ONE LOCATION, THE TRENCH OR PLOWING SHALL BE WIDENED OR DEEPENED SUFFICIENTLY TO INSTALL ALL THE CABLES IN ONE LOCATION. COST OF THE LARGER TRENCH OR PLOWING SHALL BE CONSIDERED INCIDENTAL TO THE CABLE INSTALLATION.
9. THE UNDERGROUND CABLE BETWEEN LIGHTING UNITS SHALL BE INSTALLED AT 9'± FROM THE EDGE OF PAVEMENT TO AVOID ENCOUNTERING THE EXISTING EDGE LIGHTING CABLES THAT ARE LOCATED AT 10' FROM THE EDGE OF PAVEMENT.
10. THE EXISTING UNDERGROUND CABLE TO THE EXISTING EDGE LIGHTS SHALL BE ABANDONED WITH THE EXCEPTION THAT ALL EXISTING CABLE BEING REPLACED THAT IS IN THE SAME LOCATION IN TRENCH OR DUCT AS THE PROPOSED CABLE SHALL BE REMOVED FROM THE TRENCH OR DUCT. THE CABLE REMOVED SHALL BE DISPOSED OF OFF THE AIRPORT PROPERTY BY THE CONTRACTOR AND SAID REMOVAL AND DISPOSAL SHALL BE CONSIDERED INCIDENTAL TO THE CONTRACT.
11. THE NEW RUNWAY AND TAXIWAY EDGE LIGHTING SHALL NOT BE TURNED ON FOR NIGHTTIME OPERATIONS ON A TEMPORARY OR PARTIAL BASIS. ALL COMPONENTS OF THE EDGE LIGHTING SYSTEMS SHALL BE COMPLETE AND OPERATIONAL BEFORE THE CIRCUITS ARE OPERATED.

CASEY MUNICIPAL AIRPORT CASEY, ILLINOIS	
RUNWAY 4-22 LIGHTING LAYOUT	
HUTCHISON ENGINEERING, INC. JACKSONVILLE, ILLINOIS	
DRAWN BY: R.L.R. & J.C.W. DATE: OCTOBER, 2014	ILL. PROJ. NO. 1H8-4369 SBG PROJ. NO. 3-17-SBGP-XX



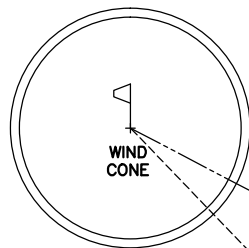
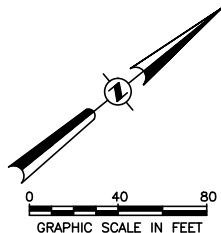
PROPOSED 1-NO. 8, 5KV, TY. C, 1/C
STR. CABLE IN UNIT DUCT



FOR GENERAL NOTES AND LEGEND APPLICABLE TO THIS LAYOUT SHEET, SEE SHEET 4 IN THESE PLANS.

CASEY MUNICIPAL AIRPORT CASEY, ILLINOIS	
RUNWAY 4-22 LIGHTING LAYOUT	
HUTCHISON ENGINEERING, INC. JACKSONVILLE, ILLINOIS	
DRAWN BY: R.L.R. & J.C.W. DATE : OCTOBER, 2014	ILL. PROJ. NO. 1H8-4369 SBG PROJ. NO. 3-17-SBGP-XX

CONTRACTOR TO EXERCISE CAUTION AND INSTALL CABLES UNDER 18" STORM SEWER (COVER OVER STORM SEWER = 8"±)



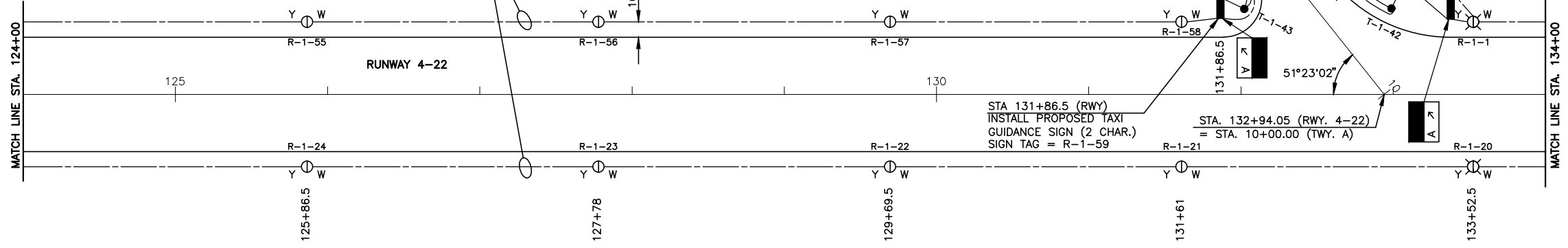
PROPOSED 2-NO. 8, 5KV, TY. C, 1/C, STR. CABLES IN COMMON UNIT DUCT FOR WIND CONE POWER CIRCUIT

FOR GENERAL NOTES AND LEGEND APPLICABLE TO THIS LAYOUT SHEET, SEE SHEET 4 IN THESE PLANS.

APPROXIMATE LOCATION OF 2 EXISTING POWER CABLES TO WIND CONE TO BE ABANDONED

PROPOSED 1-NO. 8, 5KV, TY. C, 1/C STR. CABLE IN UNIT DUCT

10' TO LIGHT UNIT
9" TO CABLE



STA. 6+92.84 (TWY. A)
= STA. 2131+02.35 (TWY. B)

2 SPACES @ 64°18'29"
15' R. - CHORD DIST. = 16.0'

1 SPACE @ 64°18'29"
15' R. - CHORD DIST. = 16.0'

STA 131+86.5 (RWY)
INSTALL PROPOSED TAXI GUIDANCE SIGN (2 CHAR.)
SIGN TAG = R-1-59

STA. 132+94.05 (RWY. 4-22)
= STA. 10+00.00 (TWY. A)

STA 8+40
INSTALL PROPOSED TAXI GUIDANCE SIGN (5 CHAR.)
SIGN TAG = R-1-60

STA 133+37.8 (RWY)
INSTALL PROPOSED TAXI GUIDANCE SIGN (2 CHAR.)
SIGN TAG = R-1-61

PROPOSED SINGLE 6" STEEL DUCT JACKED UNDER SIDEWALK WITH DUCT MARKERS - 10 LIN. FT.

PROPOSED SINGLE 6" STEEL DUCT JACKED UNDER PAVEMENT WITH DUCT MARKERS - 85 LIN. FT.

PROPOSED 2-NO. 8, 5KV, TY. C, 1/C, STR. CABLES IN COMMON UNIT DUCT FOR EACH LIGHTING CIRCUIT HOMERUN.
2-CABLES FOR RUNWAY CIRCUIT
2-CABLES FOR TAXIWAY CIRCUIT
2-CABLES FOR WIND CONE CIRCUIT

ROUTE PROPOSED HOMERUN CABLES THROUGH EXISTING ELECTRICAL MANHOLE AND DUCT INTO ELECTRICAL VAULT AND CONNECT TO NEW REGULATORS AND EXISTING WIND CONE RELAY

PROPOSED HOMERUN CABLES ROUTED TO ELECTRICAL MANHOLE

GENERAL LOCATION OF EXISTING POWER CABLES TO FUEL PUMP, ETC. CONTRACTOR SHALL LOCATE AND PROTECT DURING PROPOSED CABLE INSTALLATION.

EXISTING UNDERGROUND FUEL TANK

EXISTING ELECTRICAL VAULT
REMOVE EXISTING 7.5 KW AND 4 KW REGULATORS AND MOVE TO NORTH END OF WEST WALL OF VAULT FOR STORAGE. INSTALL PROPOSED 7.5 KW REGULATOR FOR RUNWAY CIRCUIT AND 4 KW REGULATOR FOR TAXIWAY CIRCUIT. RECONNECT EXISTING CONTROL WIRING, POWER SUPPLY WIRING AND EQUIPMENT GROUNDING TO THE NEW REGULATORS. CONNECT PROPOSED HOMERUN CABLES TO THE SERIES OUTPUT TERMINALS OF THE PROPOSED REGULATORS AND TO THE EXISTING WIND CONE RELAY.

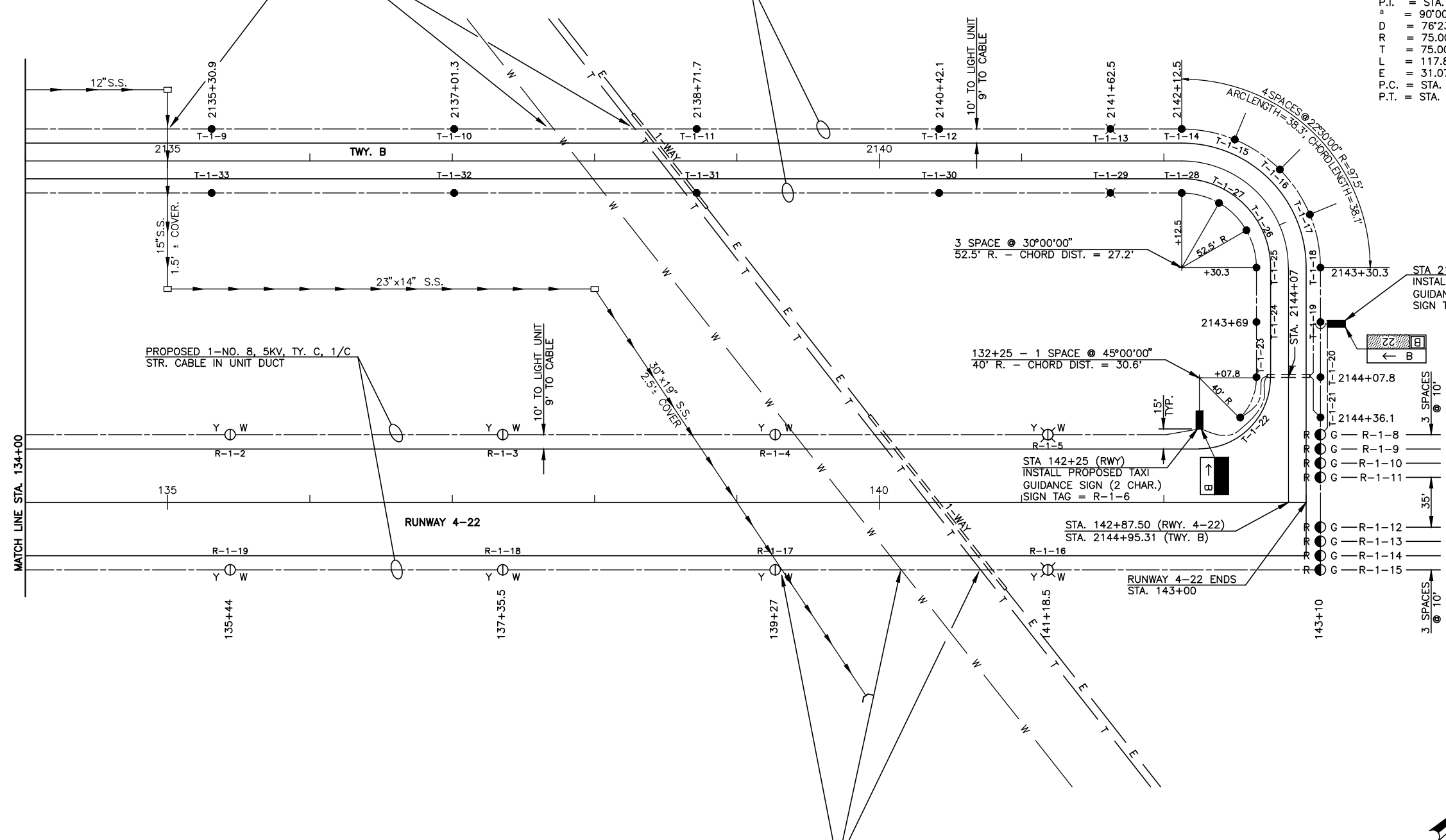
CASEY MUNICIPAL AIRPORT CASEY, ILLINOIS	
RUNWAY 4-22 AND TAXIWAY LIGHTING LAYOUT	
HUTCHISON ENGINEERING, INC. JACKSONVILLE, ILLINOIS	
DRAWN BY: R.L.R. & J.C.W. DATE: OCTOBER, 2014	ILL. PROJ. NO. 1H8-4369 SBG PROJ. NO. 3-17-SBGP-XX

CONTRACTOR TO EXERCISE CAUTION WHEN INSTALLING PROPOSED CABLE AND LIGHTS IN THE LOCATION OF EXISTING UNDERGROUND STORM SEWER, WATERMAIN, TELEPHONE, AND ELECTRICAL UTILITY PRIMARY CABLE (TYPICAL EACH SIDE OF TWY. B)

PROPOSED 1-NO. 8, 5KV, TY. C, 1/C STR. CABLE IN UNIT DUCT

TWY. B CURVE DATA

P.I.	= STA. 2142+87.50
a	= 90°00'00"
D	= 76°23'40"
R	= 75.00'
T	= 75.00'
L	= 117.81'
E	= 31.07'
P.C.	= STA. 2142+12.50
P.T.	= STA. 2143+30.31



MATCH LINE STA. 134+00

PROPOSED 1-NO. 8, 5KV, TY. C, 1/C STR. CABLE IN UNIT DUCT

3 SPACE @ 30°00'00" 52.5' R. - CHORD DIST. = 27.2'

132+25 - 1 SPACE @ 45°00'00" 40' R. - CHORD DIST. = 30.6'

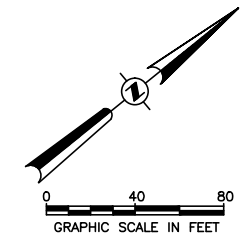
STA 142+25 (RWY) INSTALL PROPOSED TAXI GUIDANCE SIGN (2 CHAR.) SIGN TAG = R-1-6

STA. 142+87.50 (RWY. 4-22) STA. 2144+95.31 (TWY. B)

RUNWAY 4-22 ENDS STA. 143+00

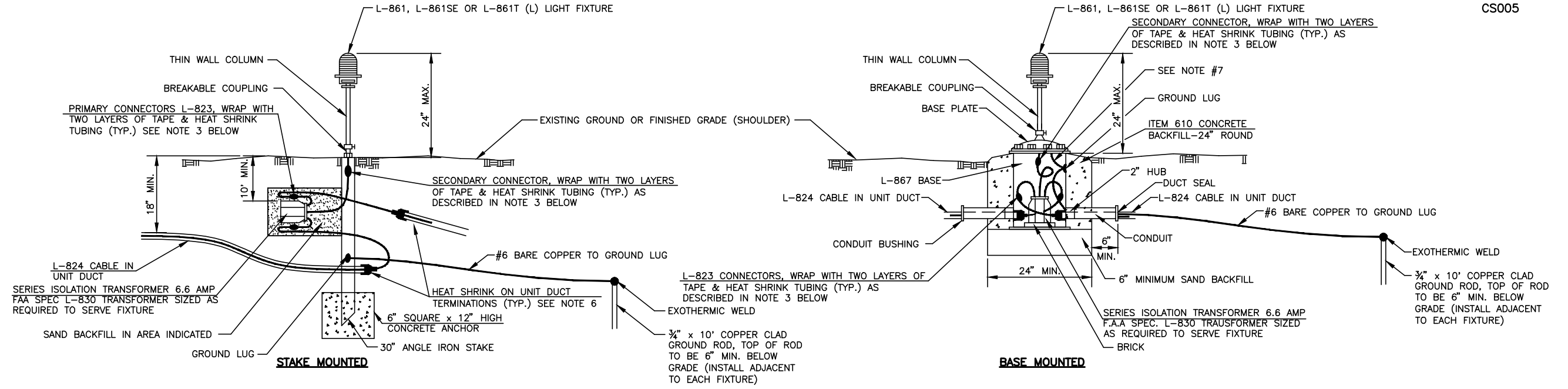
STA 2143+70.3 (TWY.) INSTALL PROPOSED TAXI GUIDANCE SIGN (3 CHAR.) SIGN TAG = R-1-7

CONTRACTOR TO EXERCISE CAUTION WHEN INSTALLING PROPOSED CABLE AND LIGHTS IN THE LOCATION OF EXISTING UNDERGROUND STORM SEWER, WATERMAIN, TELEPHONE, AND ELECTRICAL UTILITY PRIMARY CABLE (TYPICAL EACH SIDE OF RUNWAY 4-22)



FOR GENERAL NOTES AND LEGEND APPLICABLE TO THIS LAYOUT SHEET, SEE SHEET 4 IN THESE PLANS.

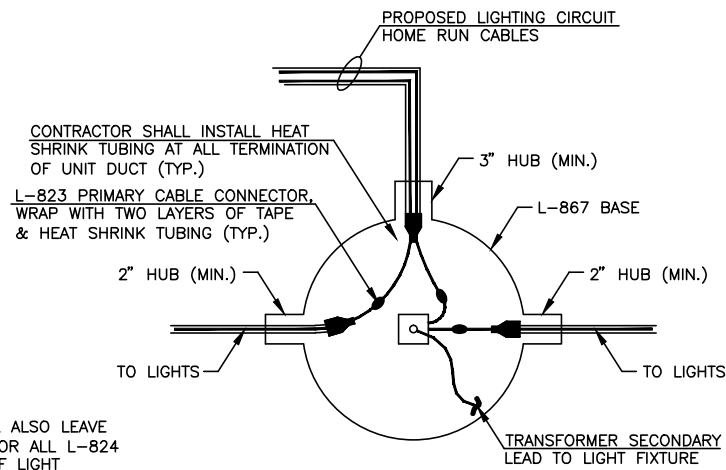
CASEY MUNICIPAL AIRPORT CASEY, ILLINOIS	
RUNWAY 4-22 AND TAXIWAY LIGHTING LAYOUT	
HUTCHISON ENGINEERING, INC. JACKSONVILLE, ILLINOIS	
DRAWN BY: R.L.R. & J.C.W.	ILL. PROJ. NO. 1H8-4369
DATE: OCTOBER, 2014	SBG PROJ. NO. 3-17-SBGP-XX



MEDIUM INTENSITY EDGE LIGHT DETAILS

EDGE LIGHT NOTES :

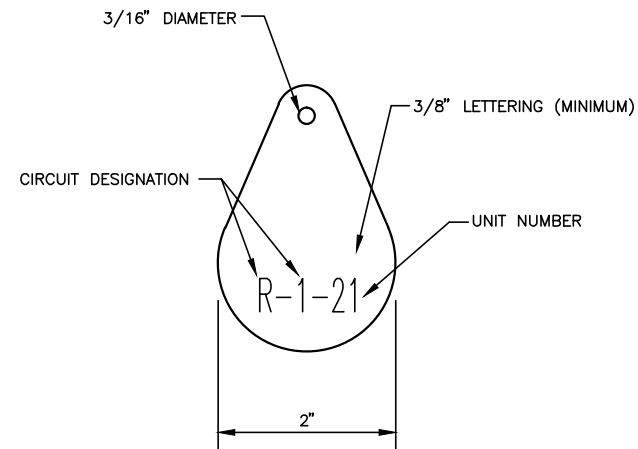
- BREAKING GROOVE OF BREAKABLE COUPLINGS SHALL NOT BE OVER 3 1/2" ABOVE GROUND LINE.
- THE CONCRETE BACKFILL FOR BASE MOUNTED LIGHTS SHALL BE TROWEL FINISHED WITH A 45° BEVELED EDGE WITH THE SURFACE SLOPING TO DRAIN. THE BASE CONCRETE BACKFILL MAY BE PRECAST AT THE CONTRACTOR'S OPTION.
- THE PRIMARY CABLE CONNECTOR JOINTS SHALL BE WRAPPED WITH ONE LAYER OF RUBBER TAPE (SCOTCH NO. 130C) AND ONE LAYER OF PLASTIC TAPE (SCOTCH NO. 88), ONE-HALF LAPPED, EXTENDING 1 1/2" EACH SIDE OF JOINT AND COVERED WITH HEAT SHRINK TUBING.
- A MINIMUM OF THREE FEET OF CABLE SLACK SHALL BE LEFT AT EACH STAKE MOUNTED LIGHT AND A MINIMUM OF THREE FEET OF CABLE SLACK AT EACH BASE MOUNTED LIGHT, HANDHOLE, OR MANHOLE. THIS REQUIRED SLACK WILL BE LEFT ON THE CABLE SIDE OF ALL PRIMARY CONNECTORS AND SPLICES. THIS REQUIRED SLACK WILL BE CONSIDERED INCIDENTAL TO THE CONTRACT.
- ALL MOUNTING BOLTS SHALL BE COATED WITH AN ANTI-SEIZING LUBRICANT.
- CONTRACTOR SHALL INSTALL HEAT SHRINK TUBING AT ALL TERMINATIONS OF UNIT DUCT (TYPICAL).
- THE LIGHT FIXTURE SHALL BE BONDED TO THE LIGHT BASE INTERNAL GROUND LUG VIA A #6 AWG STRANDED COPPER WIRE RATED FOR 600 VOLTS WITH GREEN XHHW INSULATION. THE GROUND WIRE LENGTH SHALL BE SUFFICIENT TO ALLOW THE REMOVAL OF THE LIGHT FIXTURE FROM THE LIGHT BASE FOR ROUTINE MAINTENANCE. SEE THE LIGHT FIXTURE MANUFACTURER'S INSTRUCTIONS FOR PROPER METHODS OF ATTACHING THIS BONDING WIRE.



NOTES:

- CONTRACTOR SHALL ALSO LEAVE 3'-0" OF SLACK FOR ALL L-824 CABLES IN BASE OF LIGHT
- THIS BASE DETAIL SHALL APPLY TO LIGHTING FIXTURES R-1-1 AND T-1-1.

**PROPOSED CIRCUIT CONNECTION DETAIL
BASE MOUNTED LIGHT**

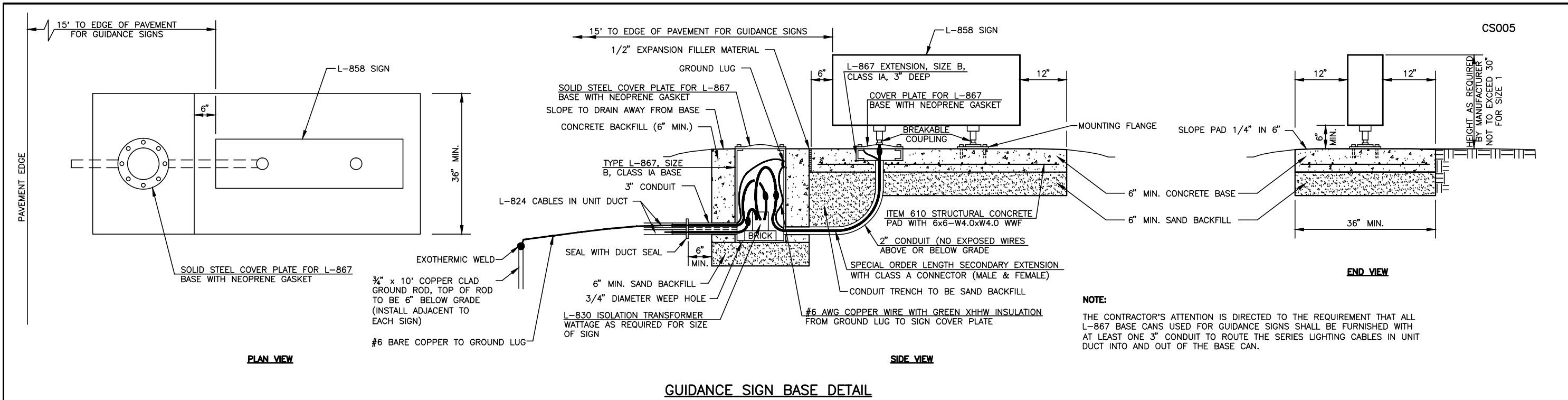


NOTES

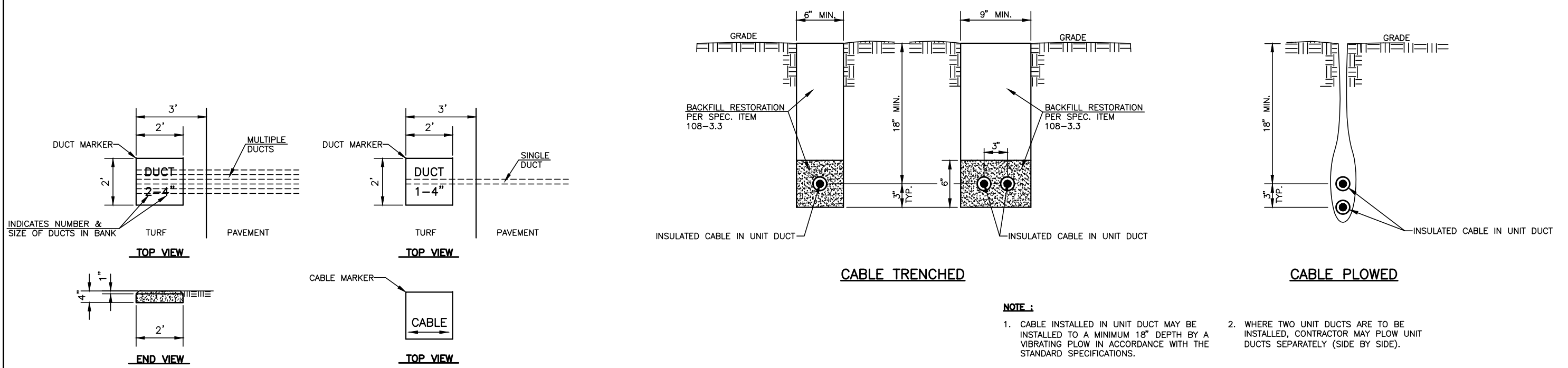
- INSTALL A NONCORROSIVE DISC OF 2 INCH MINIMUM DIAMETER WITH NUMBER PERMANENTLY STAMPED, CUT OUT OR ENGRAVED AT EACH LIGHTING UNIT.
- NONCORROSIVE DISC MAY BE ATTACHED TO LIGHT FLANGE WITH SCREW OR UNDER THE HEAD OF THE BASE PLATE BOLT.
- THE CONTRACTOR SHALL NUMBER THE PROPOSED LIGHTS AND SIGNS IN EACH CIRCUIT STARTING AT THE HOMERUN CONTINUING AROUND THE ENTIRE CIRCUIT BACK TO THE HOMERUN.
- AIRFIELD SIGNS SHALL BE TAGGED AND NUMBERED.

IDENTIFICATION TAG DETAIL

CASEY MUNICIPAL AIRPORT CASEY, ILLINOIS	
TYPICAL LIGHTING DETAILS	
HUTCHISON ENGINEERING, INC. JACKSONVILLE, ILLINOIS	
DRAWN BY: R.L.R. DATE : OCTOBER, 2014	ILL. PROJ. NO. 1H8-4369 SBG PROJ. NO. 3-17-SBGP-XX



GUIDANCE SIGN BASE DETAIL



TRENCH DETAILS

NOTES

1. LETTERS 4" HIGH, 3" WIDE WITH WIDTH OF STROKE 1/2" AND 1/4" DEEP. ALL LETTERS, NUMBERS AND ARROWS TO BE IMPRESSED. SCRATCHED FIGURES WILL NOT BE ACCEPTABLE.

TYPICAL CABLE AND DUCT MARKER DETAILS

35791009 1"=1'

CASEY MUNICIPAL AIRPORT CASEY, ILLINOIS	
TYPICAL LIGHTING DETAILS	
HUTCHISON ENGINEERING, INC. JACKSONVILLE, ILLINOIS	
DRAWN BY: R.L.R. DATE: OCTOBER, 2014	ILL. PROJ. NO. 1H8-4369 SBG PROJ. NO. 3-17-SBGP-XX