

01-30-15 LETTING ITEM 042

STATE OF ILLINOIS
DEPARTMENT OF TRANSPORTATION

SIDEWALK ENHANCEMENT

SECTION 13-00007-00-SW
PROJECT NO. TE-00D7(062)
JOB NO. C-97-059-13
ITEP NO. 720008

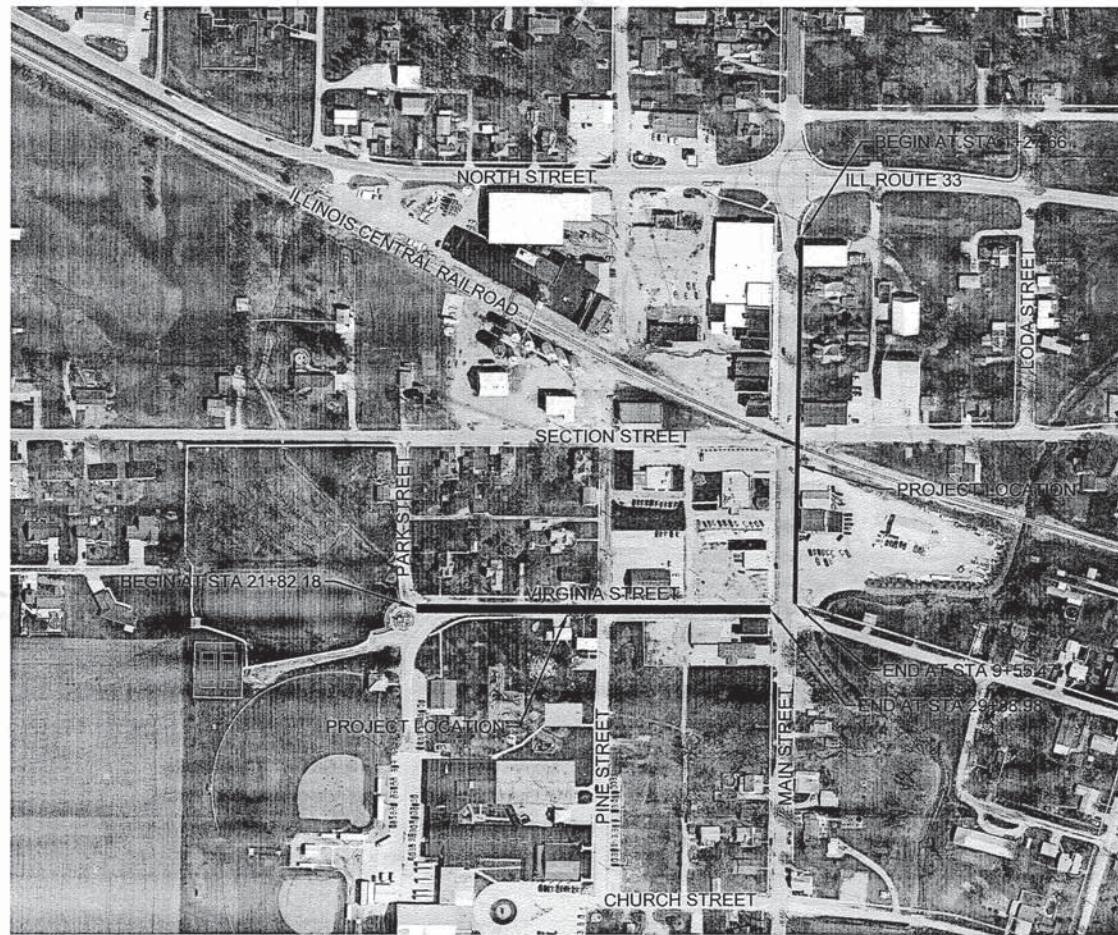
VILLAGE OF DIETERICH
EFFINGHAM COUNTY, ILLINOIS

FOR INDEX OF SHEETS
AND STANDARDS
SEE SHEET 2

ROUTE NO.	SECTION	COUNTY	TOTAL SHEETS	SHEET NO.
S.B.I. F.A.	13-00007-00-SW	EFFINGHAM	20	1
FED. ROAD DIST. NO. 6		ILLINOIS	FED. AID PROJECT	



LOCATION OF SECTION INDICATED THIS



DESIGN STAGE J.U.L.I.E. DIG NUMBER
DIG # A0130661

J.U.L.I.E.
JOINT UTILITY LOCATION INFORMATION FOR EXCAVATION
1-800-892-0123

UTILITY NOTE

THE LOCATIONS OF THOSE BURIED AND ABOVEGROUND UTILITIES SHOWN ARE APPROXIMATE, ARE SHOWN FOR CONTRACTOR INFORMATIONAL USE ONLY, AND ARE NOT TO BE REFERENCED FOR CONSTRUCTION PURPOSES. THE IMPLIED PRESENCE OR ABSENCE OF UTILITIES IS NOT TO BE CONSTRUED BY THE OWNER, ENGINEER, CONTRACTOR, OR SUBCONTRACTORS TO BE AN ACCURATE AND COMPLETE REPRESENTATION OF UTILITIES THAT MAY OR MAY NOT EXIST ON THE CONSTRUCTION SITE. BURIED AND ABOVEGROUND UTILITY LOCATION, IDENTIFICATION, AND MARKING ARE THE SOLE RESPONSIBILITY OF THE CONTRACTOR. REROUTING, DISCONNECTION, PROTECTION, ETC. OF ANY UTILITIES MUST BE COORDINATED BETWEEN THE CONTRACTOR, UTILITY COMPANY, AND OWNER. SITE SAFETY, INCLUDING THE AVOIDANCE OF HAZARDS ASSOCIATED WITH BURIED AND ABOVEGROUND UTILITIES, REMAIN THE SOLE RESPONSIBILITY OF THE CONTRACTOR. CONTRACTOR MUST CONTACT J.U.L.I.E. 48 HOURS PRIOR TO THE BEGINNING OF CONSTRUCTION.

Contract No. 95750

LOCATION MAP
VILLAGE OF DIETERICH
LENGTH OF PROJECT
VIRGINIA STREET = 808.80 Feet (0.15 Mile)
MAIN STREET = 827.81 Feet (0.16 Mile)
TOTAL = 1634.61 Feet (0.31 Mile)

APPROVED [Signature] 20 11-24-14
PRESIDENT, VILLAGE OF DIETERICH

PASSED [Signature] 20 11-24-14
DISTRICT SEVEN ENGINEER OF LOCAL ROADS & STREETS

Releasing For Bid Based on Limited Review [Signature] 20 11-24-14
DEPUTY DIRECTOR OF HIGHWAYS, REGION FOUR ENGINEER
STATE OF ILLINOIS
DEPARTMENT OF TRANSPORTATION

SIDEWALK ENHANCEMENT
SECTION 13-00007-00-SW
VILLAGE OF DIETERICH

PLANS DATED:
November 12, 2014

MILANO & GRUNLOH ENGINEERS, LLC
114 WEST WASHINGTON
P.O. BOX 887
EFFINGHAM, ILLINOIS 62401
Phone: (217) 342-7282
(800) 672-2714
Fax #: (217) 342-3433
Web Address: www.mgengineers.com
Design Firm #: 184-003108



File name: S:\DWG\1313209\dwg\Title Sheet.dwg
Plot date: 11/11/14 at 15:00
Lee R. Beckman
My License Expires 11-30-15
P.E. No. 62890

ROUTE NO.	SECTION	COUNTY	TOTAL SHEETS	SHEET NO.
S.B.L. F.A.	13-0007-00-SW	EFFINGHAM	20	2
FED. ROAD DIST. NO. 6	ILLINOIS	FED. AID PROJECT-		

CONTRACT #95750

INDEX OF SHEETS

1	TITLE SHEET
2	INDEX OF SHEETS AND STANDARDS
3	GENERAL NOTES AND DETAIL SHEET
4	SUMMARY OF QUANTITIES SHEET
5-6	TYPICAL SECTION
7	SCHEDULE OF QUANTITIES SHEET
8-9	REMOVAL PLAN SHEETS
10-11	PLAN AND PROFILE SHEETS (VIRGINIA STREET)
12	SIDEWALK PLAN SHEET (MAIN STREET)
13-15	STREET LIGHTING PLAN SHEETS
16-20	CROSS SECTION SHEETS

STANDARDS

000001-06	Standard Symbols, Abbreviations, and Patterns
280001-07	Temporary Erosion Control Systems
420001-08	Pavement Joints
420701-02	Pavement Fabric
424001-08	Perpendicular Curb Ramps for Sidewalks
424026-01	Entrance/Alley Pedestrian Crossings
602301-04	Inlet, Type A
604001-04	Frame and Lids Type 1
604086-03	Frame and Grate Type 23
606001-06	Concrete Curb Type B and Combination Concrete Curb and Gutter
701001-02	Off-Road Operations, 2L, 2W, More Than 15' (4.5 m) Away
701006-05	Off-Road Operations, 2L, 2W, 15' (4.5 m) to 24" (600 mm) from Pavement Edge
701011-04	Off-Road Moving Operations, 2L, 2W, Day Only
701501-06	Urban Lane Closure, 2L 2W, Undivided
701801-05	Sidewalk, Corner or Crosswalk Closure
701901-04	Traffic Control Devices
720001-01	Sign Panel Mounting Details
720006-04	Sign Panel Erection Details
805001-01	Electrical Service Installation Details
814001-03	Handholes
821101-01	Luminaire Wiring Diagram
825001-02	Lighting Controller Pole Mounted, 240V
836001-02	Light Pole Foundation
BLR-22-7	Typical Application of Traffic Control Devices for Construction on Rural Local Highways (Two-Lane, Two Way Rural Traffic) (Road Closed to Thru Traffic)



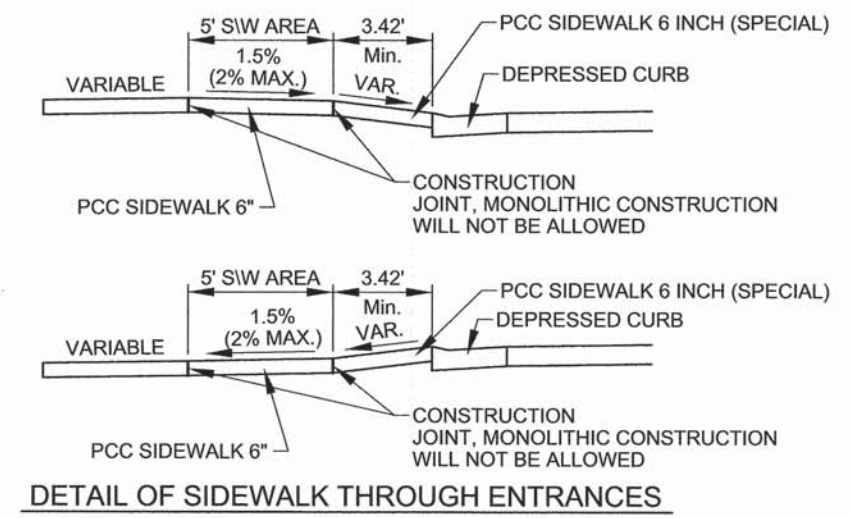
INDEX OF SHEETS
SIDEWALK ENHANCEMENT
SECTION 13-00007-00-SW
VILLAGE OF DIETERICH
EFFINGHAM COUNTY, ILLINOIS

File name: S:\DWG\13\13209\dwg\Title Sheet.dwg
Plot date: 11/11/14 at 15:00

ROUTE NO.	SECTION	COUNTY	TOTAL SHEETS	SHEET NO.
D.B.I. F.A.	13-00007-00-SW	EFFINGHAM	20	3
FED. ROAD DIST. NO. 0	ILLINOIS	FED. AID PROJECT:		

CONTRACT #95750

1. Pavement grades shown are at the top of pavement surfaces, unless otherwise noted in the plans.
2. Erosion control measures shall be in accordance with IDOT Specifications. Placement shall be directed by the Engineer.
3. All elevations refer to U.S.G.S. mean sea level datum.
4. Any reference to a standard in the plans shall be interpreted to mean the edition as indicated by the sub-number listed on Sheet 1.
5. Before ordering storm sewers, pipe culverts or pipe drains, the Contractor shall consult the Engineer for exact lengths.
6. CURB AND GUTTER, WALKS, SLABS, AND PCC DRIVEWAY PAVEMENT 8"
 - A. Concrete curb and gutter shall be in accordance with IDOT Std. Spec. Locate contraction joints at 20 ft on center, unless otherwise shown. Locate expansion joints at minimum 100 ft. on center, unless otherwise shown.
 - B. Concrete walks, and islands shall be in accordance with IDOT Std. Spec. Unless otherwise shown, locate sidewalk contraction joints at 5 ft on center and expansions joints at 50 ft on center, unless otherwise shown, locate contraction joints in larger slabs at 15 ft intervals in each direction.
 - C. Concrete walks crossing through entrances shall be constructed in accordance with the detail shown below. Monolithically constructed sidewalks will not be allowed.



MILANO & GRUNLOH ENGINEERS, LLC
 114 WEST WASHINGTON
 P.O. BOX 897
 EFFINGHAM, ILLINOIS 62401
 PHONE: (217) 347-7262
 (800) 677-2714
 FAX # (217) 342-3433

GENERAL NOTES AND DETAILS
 SIDEWALK ENHANCEMENT
 SECTION 13-00007-00-SW
 VILLAGE OF DIETERICH
 EFFINGHAM COUNTY, ILLINOIS

File name: S:\DWG\13\13209\dwg\Title Sht.dwg
 Plot date: 11/11/14 at 15:00

ROUTE NO.	SECTION	COUNTY	TOTAL SHEETS	SHEET NO.
S.B.I. P.A.	13-0007-00-SW	EFFINGHAM	20	4
FED. ROAD DIST. NO. 6	ILLINOIS	FED. AID PROJECT		

CONTRACT #95750

ITEM NO.	ITEM	UNIT	QUANTITY	50% ITEP/ 50% LOCAL	80% ITEP/ 20% LOCAL	100% LOCAL
20800150	TRENCH BACKFILL	CU YD	13	-	13	-
28000500	INLET AND PIPE PROTECTION	EACH	1	-	1	-
28000510	INLET FILTERS	EACH	1	-	1	-
35400100	PORTLAND CEMENT CONCRETE BASE COURSE WIDENING 6"	SQ YD	186	-	-	186
40600275	BITUMINOUS MATERIALS (PRIME COAT)	POUND	7,200	-	1,400	5,800
40603315	HOT-MIX ASPHALT SURFACE COURSE, MIX "C", N70	TON	423	-	84	339
42000300	PORTLAND CEMENT CONCRETE PAVEMENT 8"	SQ YD	46	-	46	-
42001300	PROTECTIVE COAT	SQ YD	356	-	356	-
42300200	PORTLAND CEMENT CONCRETE DRIVEWAY PAVEMENT, 6 INCH	SQ YD	297	-	297	-
42400100	PORTLAND CEMENT CONCRETE SIDEWALK 4 INCH	SQ FT	10,139	-	10,139	-
42400410	PORTLAND CEMENT CONCRETE SIDEWALK 8 INCH	SQ FT	785	-	785	-
42400800	DETECTABLE WARNINGS	SQ FT	149	-	149	-
44000100	PAVEMENT REMOVAL	SQ YD	1,362	-	1,362	-
44000200	DRIVEWAY PAVEMENT REMOVAL	SQ YD	22	-	22	-
44000600	SIDEWALK REMOVAL	SQ FT	9,835	-	9,835	-
550A2320	STORM SEWERS, RUBBER GASKET, CLASS A, TYPE 1 12"	FOOT	50	-	50	-
56500300	DOMESTIC METER VAULTS TO BE ADJUSTED	EACH	6	-	6	-
60237460	INLETS, TYPE A, TYPE 23 FRAME AND GRATE	EACH	2	-	2	-
60261530	INLETS TO BE ADJUSTED WITH NEW TYPE 23 FRAME AND GRATE	EACH	1	-	1	-
60266600	VALVE BOXES TO BE ADJUSTED	EACH	2	-	2	-
60604400	COMBINATION CONCRETE CURB AND GUTTER, TYPE B-6.18	FOOT	1,613	-	1,613	-
67100100	MOBILIZATION	L SUM	1	-	1	-
70102620	TRAFFIC CONTROL AND PROTECTION, STANDARD 701501	L SUM	1	-	1	-
72000100	SIGN PANEL - TYPE 1	SQ FT	6.25	-	6.25	-
72400310	REMOVE SIGN PANEL - TYPE 1	SQ FT	3	-	3	-
72400710	RELOCATE SIGN PANEL - TYPE 1	SQ FT	43.25	-	43.25	-
Δ 81028350	UNDERGROUND CONDUIT, PVC, 2" DIA.	FOOT	76	76	-	-
Δ 81400100	HANDHOLE	EACH	1	1	-	-
Δ 81603035	UNIT DUCT, 600V, 2-1C NO.6, 1/C NO.6 GROUND, (XLP-TYPE USE), 1" DIA. POLYETHYLENE	FOOT	925	925	-	-
Δ 82500300	LIGHTING CONTROLLER, POLE MOUNTED, 240VOLT, 30AMP	EACH	1	1	-	-
Δ 83600200	LIGHT POLE FOUNDATION, 24" DIAMETER	FOOT	50	50	-	-
* X0327018	DECORATIVE SIGN POST	EACH	10	-	10	-
* X2501000	SEEDING, CLASS 2 (SPECIAL)	ACRE	0.9	-	0.9	-
* X4240420	PORTLAND CEMENT CONCRETE SIDEWALK 4 INCH, SPECIAL	SQ FT	4,789	-	4,789	-
* X4240440	PORTLAND CEMENT CONCRETE SIDEWALK 6 INCH, SPECIAL	SQ FT	7,069	-	7,069	-
* X4240460	PORTLAND CEMENT CONCRETE SIDEWALK 8 INCH, SPECIAL	SQ FT	8,693	-	8,693	-
* X6023200	INLETS, TYPE A SPECIAL	EACH	1	-	1	-
* X6024503	INLETS TO BE ADJUSTED WITH NEW FRAME AND GRATE (SPECIAL)	EACH	5	-	5	-
* X6026050	SANITARY MANHOLES TO BE ADJUSTED	EACH	2	-	2	-
* X7010216	TRAFFIC CONTROL AND PROTECTION, (SPECIAL)	L SUM	1	-	1	-
* Z0011500	COLD MILLING EXISTING SURFACE	SQ YD	2,522	-	475	2,047
* Z0048665	RAILROAD PROTECTIVE LIABILITY INSURANCE	L SUM	1	-	1	-
* Z0051398	REMOVE EXISTING SIGN POST	EACH	10	-	10	-
Δ * XX008767	LIGHT POLE STREET AND SIDEWALK SPECIAL	EACH	10	10	-	-

* INDICATES A SPECIAL PROVISION

Δ SPECIALTY ITEMS

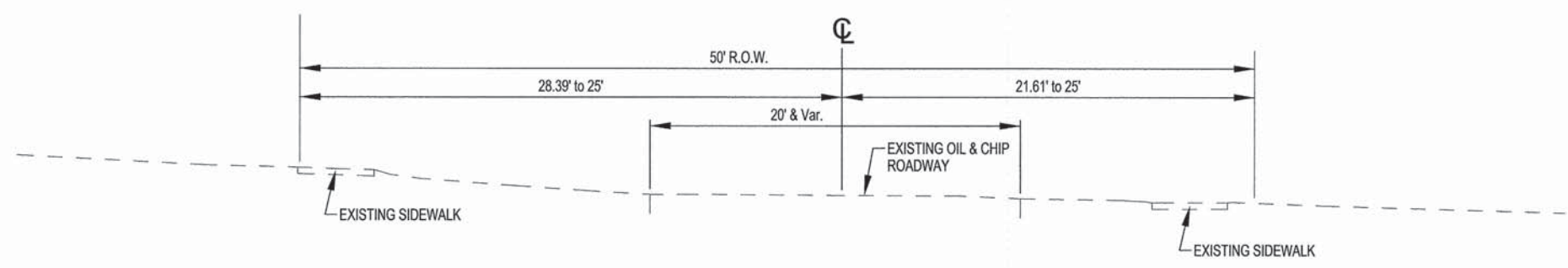


SUMMARY OF QUANTITIES
SIDEWALK ENHANCEMENT
SECTION 13-0007-00-SW
VILLAGE OF DIETERICH, ILLINOIS
EFFINGHAM COUNTY, ILLINOIS

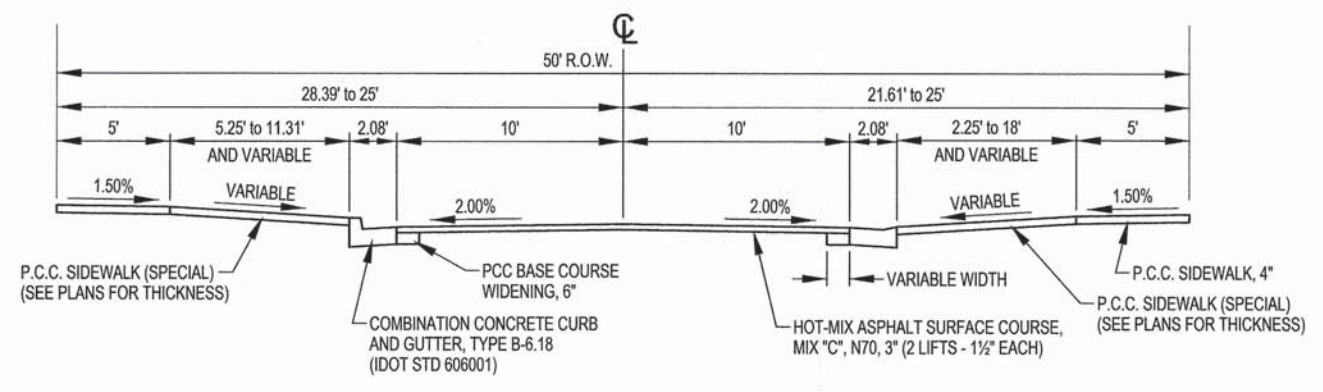
File name: S:\DWG\1313209\dwg\Quantities.dwg
Plot date: 11/19/14 at 14:15

ROUTE NO.	SECTION	COUNTY	TOTAL SHEETS	SHEET NO.
	13-0007-00-SW	EFFINGHAM	20	5
		ILLINOIS		

CONTRACT #95750



EXISTING TYPICAL SECTION
 VIRGINIA STREET
 STA. 21+82.18 TO STA. 29+88.98

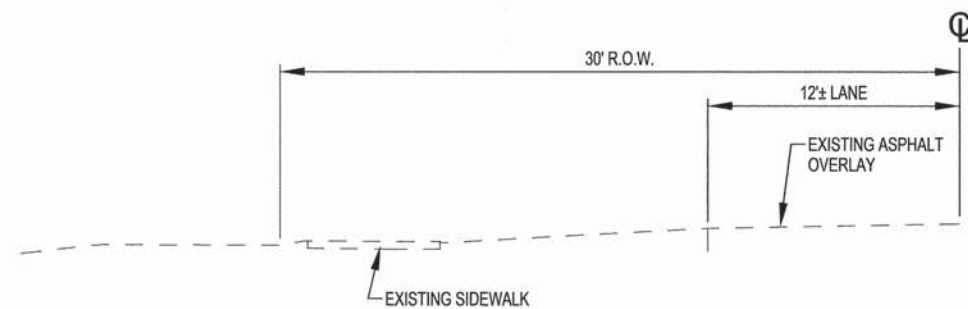


PROPOSED TYPICAL SECTION
 VIRGINIA STREET
 STA. 21+82.18 TO STA. 29+88.98
 (SEE REMOVAL SHEETS FOR MILLING LIMITS)

	MILANO & GRUNLOH ENGINEERS, LLC 114 WEST WASHINGTON P.O. BOX 897 EFFINGHAM, ILLINOIS 62401 Phone: (217) 342-7282 (800) 677-2714 Fax #: (217) 342-3433 Web Address: www.mgengineers.com Design Firm #: 184-002108	TYPICAL SECTION SIDEWALK ENHANCEMENT SECTION 13-00007-00-SW VIRGINIA STREET VILLAGE OF DIETERICH, ILLINOIS EFFINGHAM COUNTY, ILLINOIS
	File name: S:\DWG\13\13209\dwg\Typical.dwg	
	Plot date: 11/18/14 at 08:50	

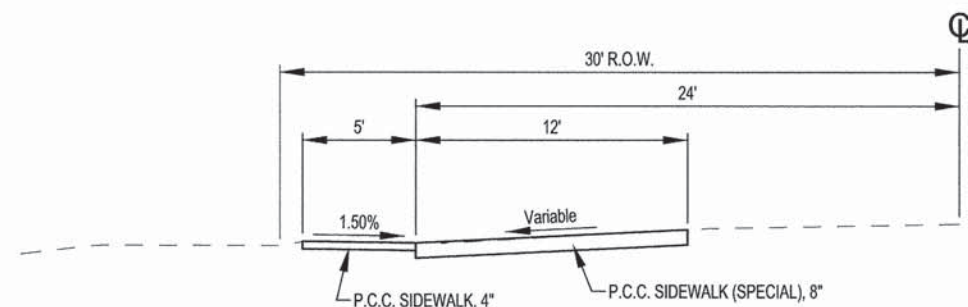
ROUTE NO.	SECTION	COUNTY	TOTAL SHEETS	SHEET NO.
	13-0007-00-SW	EFFINGHAM	20	6
		ILLINOIS		

CONTRACT #95750



EXISTING TYPICAL SECTION

MAIN STREET
STA. 1+67.79 TO STA. 9+38.61



PROPOSED TYPICAL SECTION

MAIN STREET
STA. 1+67.79 TO STA. 9+38.61

MILANO & GRUNLOH ENGINEERS, LLC
 114 WEST WASHINGTON
 P.O. BOX 897
 EFFINGHAM, ILLINOIS 62401
 Phone: (217) 343-7252
 (800) 673-2714
 Fax #: (217) 343-3433
 Web Address: www.mgengineers.com
 Design Firm #: 184-001508

TYPICAL SECTION
 SIDEWALK ENHANCEMENT
 SECTION 13-00007-00-SW
 MAIN STREET
 VILLAGE OF DIETERICH, ILLINOIS
 EFFINGHAM COUNTY, ILLINOIS

File name: S:\DWG\13\13209\dwg\Typical.dwg
 Plot date: 11/18/14 at 08:50

COMBINATION CONCRETE CURB AND GUTTER, TYPE B-6.18		
LOCATION	FOOT	
LT 22 + 00.1 TO LT 25 + 97.2	422	
LT 22 + 33.3 TO LT 22 + 36.1	9	
RT 22 + 15.4 TO RT 25 + 93.7	407	
LT 26 + 20.2 TO LT 29 + 67.0	358	
LT 27 + 02.4 TO LT 27 + 03.3	5	
LT 27 + 18.3 TO LT 27 + 19.2	5	
LT 28 + 59.1 TO LT 28 + 62.4	7	
LT 28 + 75.5 TO LT 28 + 78.8	7	
LT 29 + 58.2 TO LT 29 + 59.2	7	
RT 26 + 16.7 TO RT 29 + 77.1	386	
TOTAL	1613	

REMOVE EXISTING SIGN POST		
LOCATION	EACH	
31.7' LT 22 + 13.2	1	
14.6' RT 25 + 83.5	1	
27.8' LT 25 + 98.0	1	
16.9' LT 26 + 33.8	1	
24.3' LT 26 + 33.8	1	
20.5 RT 29 + 45.2	1	
19.2' LT 5 + 25.3	1	
27.5' LT 5 + 25.3	1	
23.4 LT 6 + 96.7	1	
21.7' LT 9 + 01.2	1	
TOTAL	10	

BITUMINOUS MATERIALS (PRIME COAT)		
LOCATION	POUND	
STA. 21 + 82.18 TO 29 + 88.8	6420	
RT. STA. 26 + 05.64	310	
LT STA. 26 + 08.32	220	
LT 5 + 52.2 TO LT 5 + 84.0	250	
TOTAL	7200	

SIDEWALK REMOVAL		
LOCATION	SQ FT	
LT 22 + 13.3 TO 25 + 11.8	1220	
LT 25 + 30.0 TO 25 + 93.6	286	
RT 22 + 22.9 TO 25 + 94.9	1654	
LT 26 + 22.8 TO 27 + 81.0	685	
RT 26 + 32.4 TO 27 + 67.8	522	
LT 28 + 03.0 TO 29 + 64.2	639	
RT 28 + 88.9 TO 29 + 58.7	319	
RT 29 + 71.9 TO 29 + 75.9	23	
LT 1 + 27.7 TO 5 + 44.9	2461	
LT 6 + 05.1 TO 9 + 42.9	2026	
TOTAL	9835	

DETECTABLE WARNINGS		
LOCATION	SQ FT	
LT 22 + 08.3	10	
RT 22 + 17.4	10	
RT 25 + 82.9	10	
LT 25 + 92.7	12	
LT 25 + 82.9	10	
LT 26 + 26.9	10	
LT 5 + 44.4	13	
LT 5 + 95.1	10	
LT 9 + 35.1	20	
RT 21 + 92.0	11	
LT 21 + 90.1	10	
RT 29 + 75.4	12	
RT 25 + 89.7	11	
TOTAL	149	

PCC DRIVEWAY PAVEMENT, 6"		
LOCATION	SQ YD	
LT 24 + 23.74	26	
RT 25 + 12.77	39	
LT 25 + 20.69	36	
RT 27 + 83.20	21	
LT 27 + 89.44	29	
LT 28 + 47.33	36	
RT 28 + 65.21	110	
TOTAL	297	

PORTLAND CEMENT CONCRETE PAVEMENT 8"		
LOCATION	SQ YD	
LT 9 + 29.6 TO LT 9 + 55.5	46	
TOTAL	46	

HOT MIX ASPHALT SURFACE COURSE, MIX "C", N 70		
LOCATION	TON	
STA. 21 + 82.18 TO 29 + 88.98	379	
RT. 26 + 05.64	18	
LT 26 + 08.32	12	
LT 5 + 52.2 TO LT 5 + 84.0	14	
TOTAL	423	

DRIVEWAY PAVEMENT REMOVAL		
LOCATION	SQ YD	
LT 25 + 11.8 TO 25 + 30.0	15	
RT 24 + 94.5 TO 25 + 30.6	7	
TOTAL	22	

PCC BASE COURSE WIDENING, 6"		
LOCATION	SQ YD	
LT 21 + 99.0 TO LT 29 + 67.0	87	
LT 21 + 99.0 TO LT 29 + 67.0	3	
LT 25 + 83.6 TO LT 25 + 98.7	3	
RT 22 + 14.2 TO RT 29 + 72.1	87	
RT 25 + 80.3 TO RT 25 + 95.2	3	
RT 26 + 15.2 TO RT 26 + 30.2	3	
TOTAL	186	

PORTLAND CEMENT CONCRETE SIDEWALK, 4"		
LOCATION	SQ FT	
LT 21 + 84.4 TO 21 + 92.1	30	
RT 21 + 80.6 TO 21 + 93.9	65	
LT 22 + 05.6 TO LT 24 + 16.9	1139	
RT 22 + 17.4 TO RT 34 + 94.6	1600	
RT 26 + 19.5 TO RT 27 + 77.5	785	
LT 26 + 24.7 TO LT 37 + 80.7	828	
RT 27 + 89.5 TO RT 28 + 28.4	195	
LT 27 + 98.7 TO LT 28 + 35.0	181	
LT 28 + 59.0 TO LT 29 + 64.2	527	
RT 29 + 01.9 TO RT 29 + 76.5	382	
LT 24 + 30.9 TO LT 25 + 11.4	402	
LT 25 + 30.4 TO LT 25 + 92.7	366	
RT 25 + 30.6 TO RT 25 + 94.6	464	
LT 1 + 27.7 TO LT 5 + 42.7	2125	
LT 5 + 94.1 TO LT 6 + 33.5	197	
LT 6 + 93.5 TO LT 8 + 06.5	565	
LT 8 + 77.3 TO LT 9 + 41.0	383	
TOTAL	10139	

PORTLAND CEMENT CONCRETE SIDEWALK, 8"		
LOCATION	SQ FT	
LT 6 + 33.5 TO 6 + 93.5	360	
LT 8 + 06.5 TO LT 8 + 77.3	425	
TOTAL	785	

PCC SIDEWALK, 6" SPECIAL		
LOCATION	SQ FT	
RT 22 + 19.0 TO RT 24 + 20.3	3751	
LT 22 + 34.3 TO LT 23 + 42.2	1194	
LT 25 + 30.3 TO LT 25 + 90.4	531	
LT 26 + 26.9 TO LT 27 + 02.1	519	
LT 27 + 19.5 TO 27 + 80.6	454	
LT 28 + 76.5 TO LT 29.58	620	
TOTAL	7069	

COLD MILLING EXISTING SURFACE		
LOCATION	SQ YD	
STA 21 + 82.2 TO 29 + 89.0	2397	
LT 5 + 40.0 TO 5 + 85.9	125	
TOTAL	2522	

PCC SIDEWALK, 8" SPECIAL		
LOCATION	SQ FT	
LT 1 + 67.8 TO LT 5 + 53.68	4651	
LT 5 + 88.7 TO LT 9 + 29.6	4042	
TOTAL	8693	

SANITARY MANHOLES TO BE ADJUSTED		
LOCATION	EACH	
13.9' LT 26 + 00.1	1	
11.5' LT 27 + 50.3	1	
TOTAL	2	

VALVE BOXES TO BE ADJUSTED		
LOCATION	EACH	
2.2' LT 26 + 11.8	1	
4.1' LT 26 + 14.0	1	
TOTAL	2	

PORTLAND CEMENT CONCRETE SIDEWALK, 4" SPECIAL		
LOCATION	SQ FT	
LT 22 + 16.9 TO LT 22 + 35.5	124	
LT 23 + 42.2 TO LT 24 + 16.9	839	
RT 24 + 20.32 TO RT 24 + 94.6	332	
LT 24 + 30.9 TO 25 + 11.4	900	
RT 25 + 30.6 TO RT 25 + 81.7	191	
RT 26 + 25.7 TO RT 27 + 77.4	1162	
LT 27 + 02.9 TO LT 27 + 18.7	94	
RT 27 + 89.6 TO RT 28 + 28.3	270	
LT 27 + 98.8 TO RT 28 + 34.8	249	
LT 28 + 59.8 TO LT 28 + 78.1	100	
RT 29 + 02.0 TO RT 29 + 71.7	468	
LT 29 + 58.8 TO 29 + 67.00	60	
TOTAL	4789	

PAVEMENT REMOVAL		
LOCATION	SQ YD	
LT 27 + 81.2 TO 27 + 99.2	37	
RT 26 + 21.2 TO 29 + 71.4	348	
RT 21 + 80.1 TO 21 + 94.3	9	
LT 1 + 67.8 TO LT 5 + 53.68	518	
LT 5 + 88.7 TO LT 9 + 29.6	450	
TOTAL	1362	

DOMESTIC METER VAULTS TO BE ADJUSTED		
LOCATION	EACH	
23.0' LT 23 + 50.6	1	
23.5' LT 25 + 20.5	1	
14.7' RT 25 + 86.0	1	
17.4' LT 27 + 32.1	1	
19.4' RT 28 + 00.7	1	
19.5' RT 28 + 04.0	1	
TOTAL	6	

SIGN REPLACEMENT							
SIGN PANEL NUMBER	DESCRIPTION	RELOCATE SIGN PANEL - TYPE 1 (SQ FT)	REMOVE SIGN PANEL - TYPE 1 (SQ FT)	SIGN PANEL - TYPE 1 (SQ FT)	EXISTING SIGN LOCATION	DECORATIVE SIGN POST* EACH	MOUNTING HEIGHT
1	Virginia Street Under Park Street Over	2.00			31.7' LT 22+13.2	23.5' LT 22+13.2	POST TOP
2	Slow Children Playing Sign	3.00			16.3' LT 24+58.6	15.3' LT 24+58.6	7
3	Stop Sign R1-1-36"	6.25			14.6' RT 25+83.5	14.7' RT 25+66.9	7
4	Stop Sign R1-1-36"	6.25			27.8' LT 25+98.0	31.3' LT 25+95.4	7
5	Stop Sign R1-1-36"	6.25			16.9' LT 26+33.8	15.0' LT 26+37.4	7
6	Parallel Parking Sign		3.00				
7	Virginia Street Under Steppe Street Over	2.00			24.3' LT 27+78.0	15.0' LT 27+73.4	POST TOP
8	Stop Sign R1-1-36"	6.25			19.2' RT 29+70.4	14.7' RT 29+65.6	7
9	Illinois Route 33 and Junction	6.25			22.2' LT 5+25.6	22.3' LT 5+25.6	7
10	Traffic Signal Ahead			6.25	23.4' LT 6+96.7	22.8' LT 6+96.7	7
11	Railroad Crossing	5.00			21.7' LT 9+01.2	22.5' LT 9+01.2	7
Total		43.25	3.00	6.25		10	

* Mounting brackets shall be provided with sign post

INLET, TA T23 F&G		
LOCATION	EACH	
LT 22+81	1	
RT 22+85	1	
TOTAL	2	

STORM SEWERS, RUBBER GASKET, CLASS 1, TYPE 1, 12"		
LOCATION	FOOT	
LT, RT 22+81	50	
TOTAL	50	

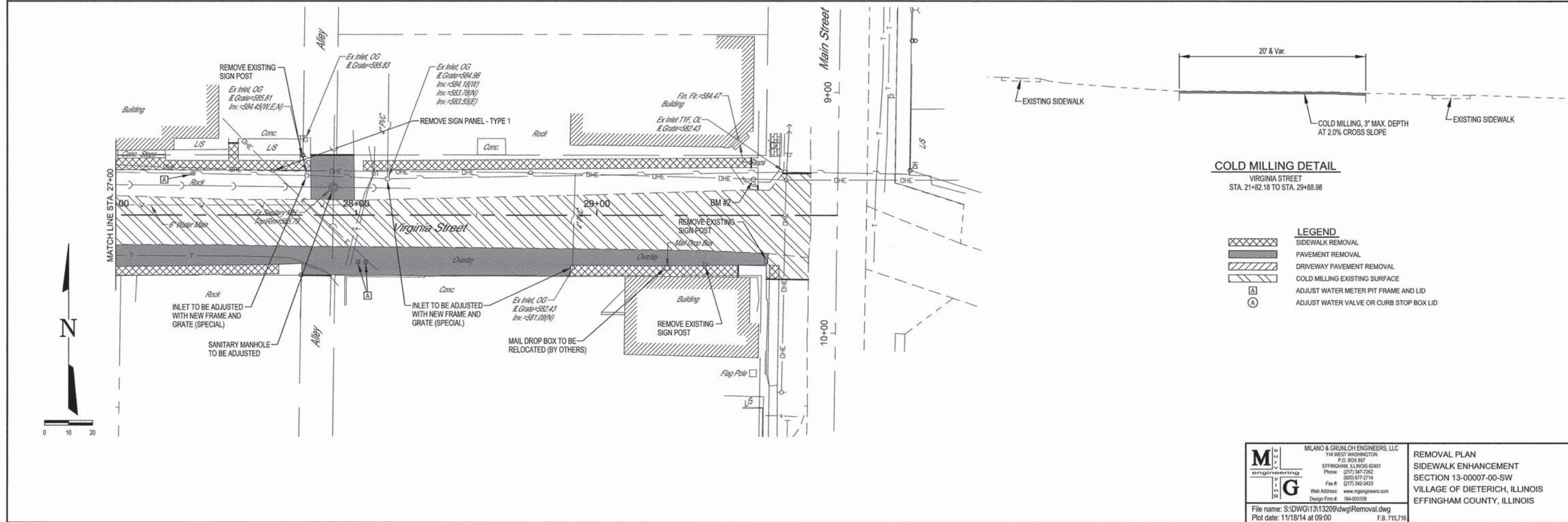
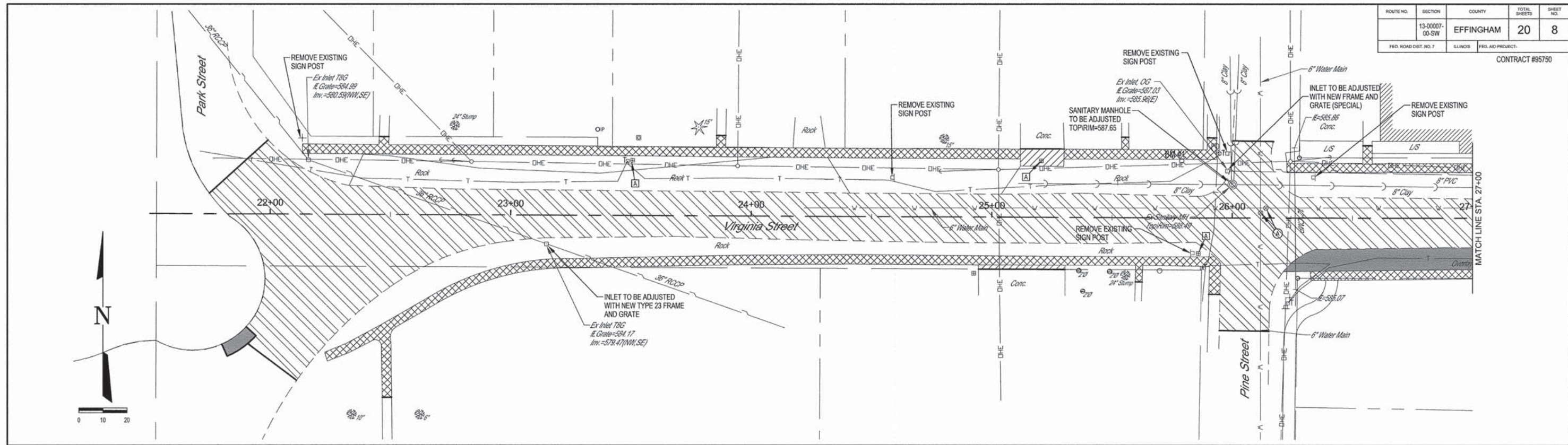
INLETS, TYPE A, SPECIAL		
LOCATION	EACH	
RT 22 + 92.4	1	
TOTAL	1	

TRENCH BACKFILL		
LOCATION	CU YD	
.018' LT 22 + 80.05 TO 11.10' LT 22 + 83.85	2.5	
17.02' RT 22 + 84.17 TO 2.95' RT 22 + 89.06	3.5	
17.02' RT 22 + 84.17 TO 45.71' RT 22 + 92.94	7	
TOTAL	13	

 M ILANO & GRUNLOH ENGINEERING	MILANO & GRUNLOH ENGINEERS, LLC
	114 WEST WASHINGTON
	P.O. BOX 897
	EFFINGHAM, ILLINOIS 62401
	Phone: (217) 347-7282
(800) 871-2714	
Fax #: (217) 342-3433	
Web Address: www.mgenj.com	
Design Firm #: 154-003108	

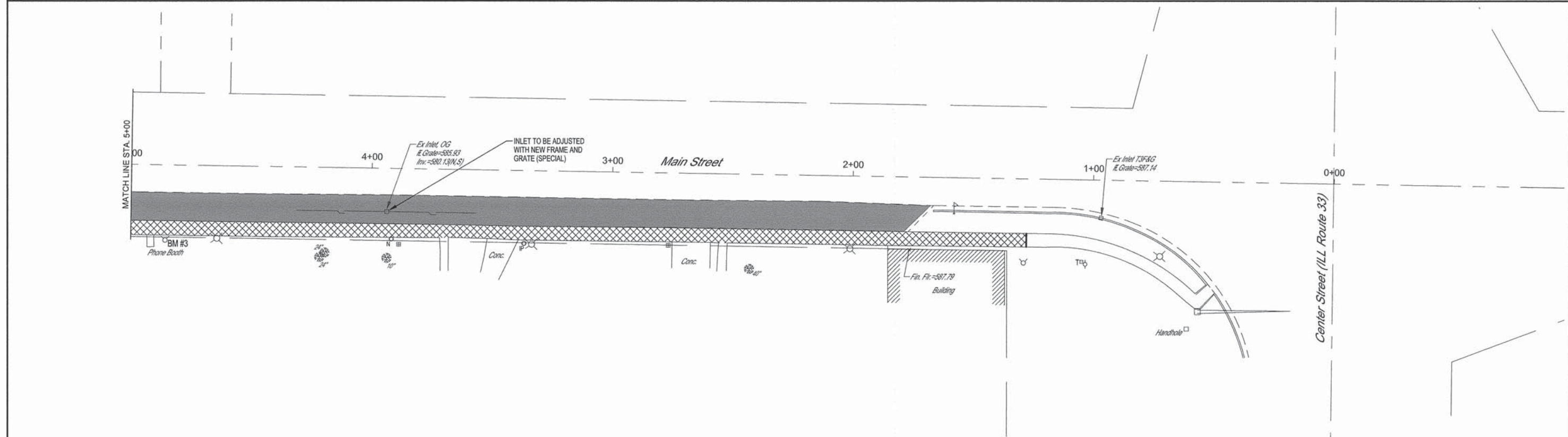
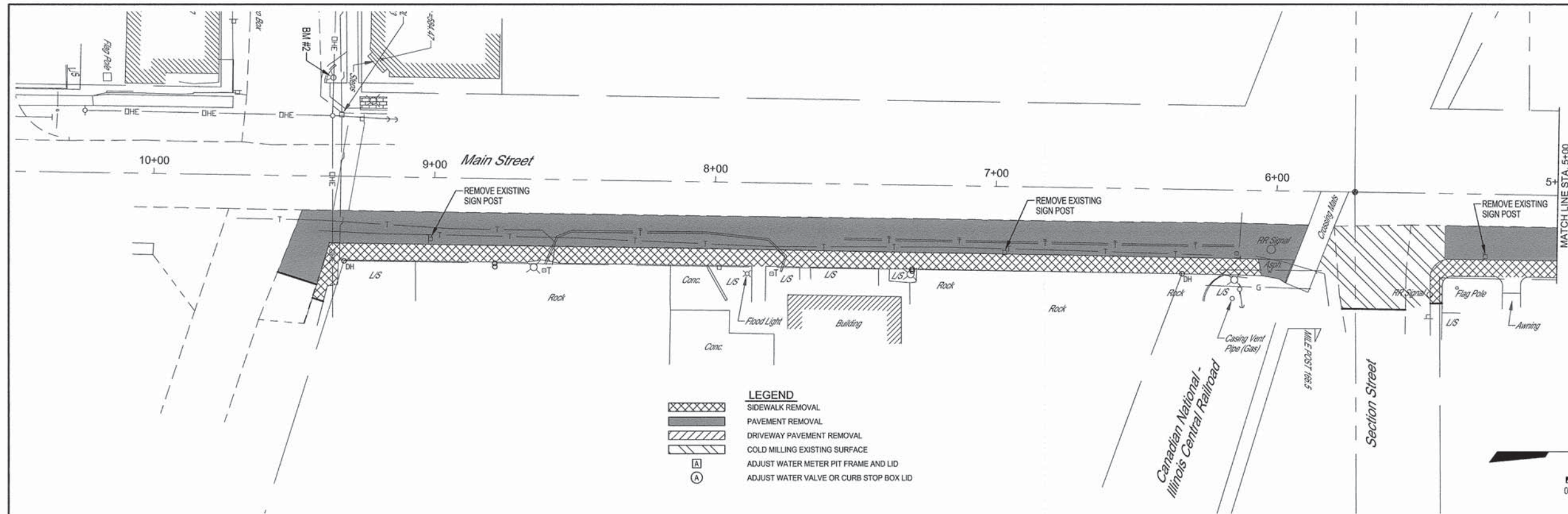
SCHEDULE OF QUANTITIES
SIDEWALK ENHANCEMENT
SECTION 13-00007-00-SW
VILLAGE OF DIETERICH, ILLINOIS
EFFINGHAM COUNTY, ILLINOIS

ROUTE NO.	SECTION	COUNTY	TOTAL SHEETS	SHEET NO.
	13-0007-00-SW	EFFINGHAM	20	8
FED. ROAD DIST. NO. 7	ILLINOIS	FED. AID PROJECT-	CONTRACT #95750	



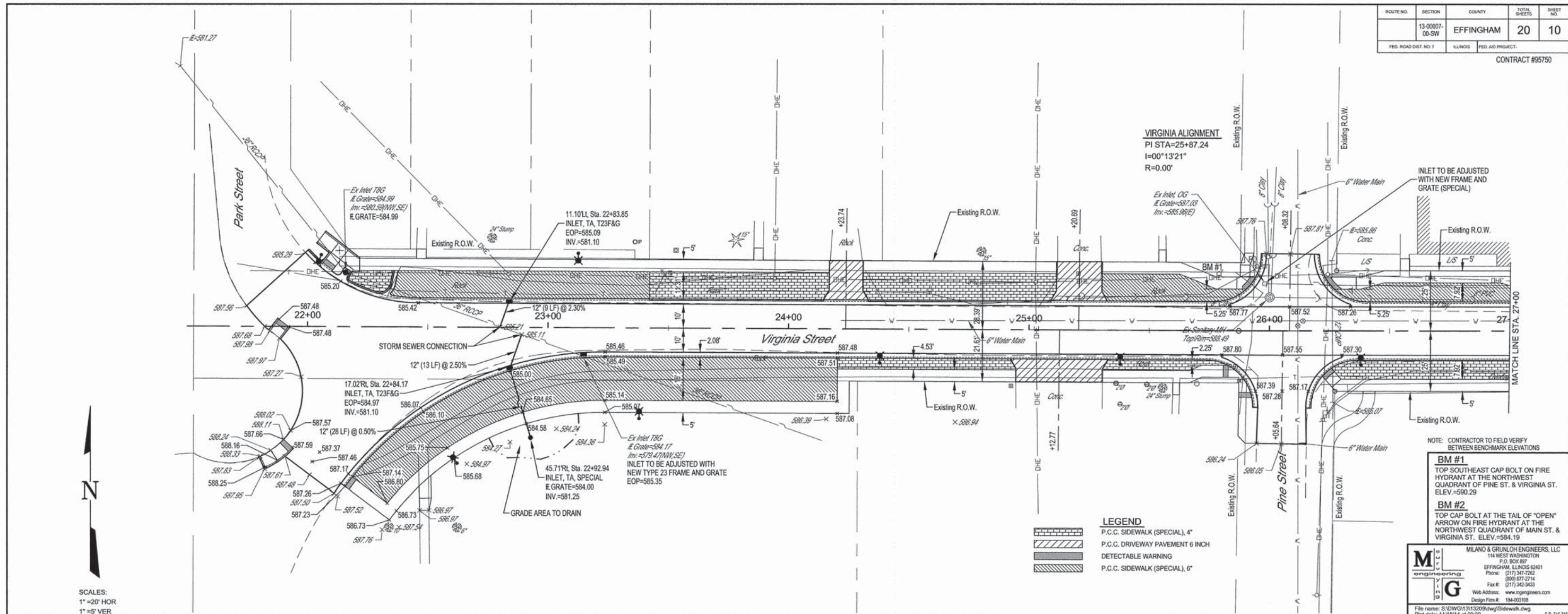
	MILANO & GRUNLOH ENGINEERS, LLC 114 WEST WASHINGTON P.O. BOX 897 EFFINGHAM, ILLINOIS 62401 Phone: (217) 345-1292 (800) 677-2714 Fax #: (217) 345-3433 Web Address: www.mg-engineers.com Design Firm #: 184-001008	REMOVAL PLAN SIDEWALK ENHANCEMENT SECTION 13-0007-00-SW VILLAGE OF DIETERICH, ILLINOIS EFFINGHAM COUNTY, ILLINOIS
	File name: S:\DWG\13\13209\dwg\Removal.dwg	
	Plot date: 11/18/14 at 09:00	
	F.B. 715,716	

ROUTE NO.	SECTION	COUNTY	TOTAL SHEETS	SHEET NO.
	13-0007-00-SW	EFFINGHAM	20	9
FED. ROAD DIST. NO. 7	ILLINOIS	FED. AID PROJECT-	CONTRACT #95750	

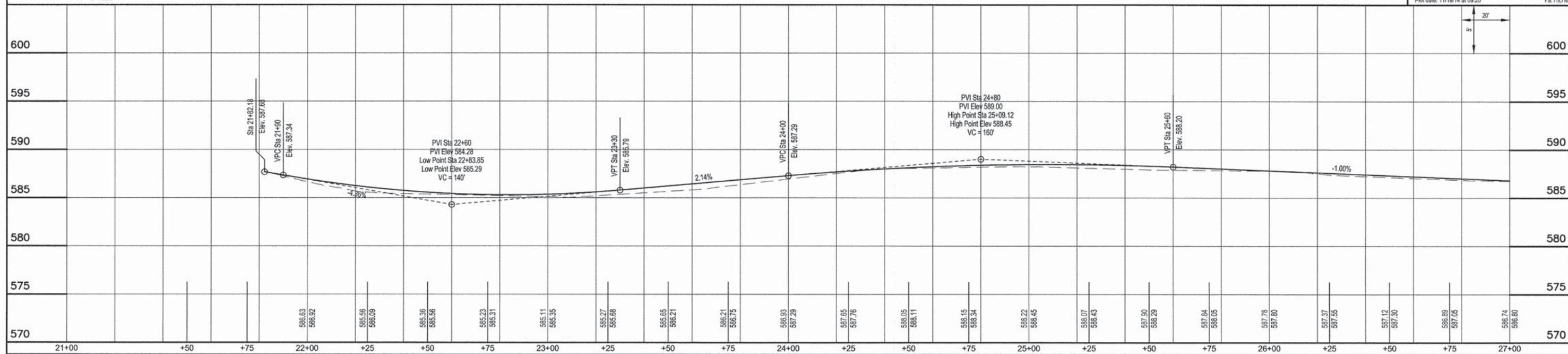


	MILANO & GRUNLOH ENGINEERS, LLC 114 WEST WASHINGTON P.O. BOX 897 EFFINGHAM, ILLINOIS 62401	REMOVAL PLAN SIDEWALK ENHANCEMENT SECTION 13-00007-00-SW VILLAGE OF DIETERICH, ILLINOIS EFFINGHAM COUNTY, ILLINOIS
	Phone: (217) 342-7252 (800) 677-2714 Fax: (217) 342-3433	
	Web Address: www.mge-engineers.com Design Firm #: 184-003908	
	File name: S:\DWG\13\13209\dwg\Removal.dwg Plot date: 11/18/14 at 09:05	

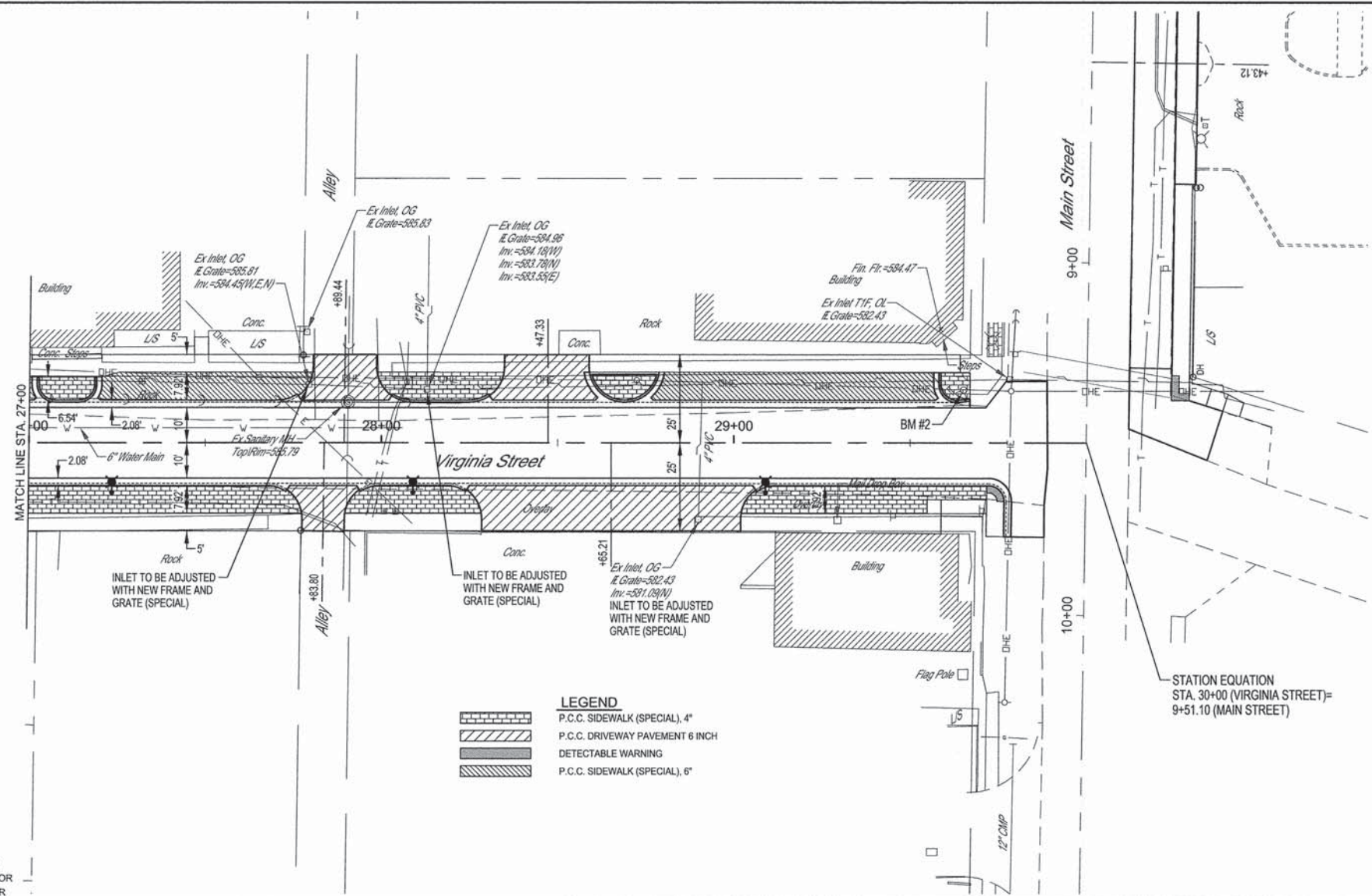
ROUTE NO.	SECTION	COUNTY	TOTAL SHEETS	SHEET NO.
13-0007-00-SW		EFFINGHAM	20	10
FED. ROAD DIST. NO. 7	ILLINOIS	FED. AID PROJECT:	CONTRACT #95750	



SCALES:
 1"=20' HOR
 1"=5' VER



ROUTE NO.	SECTION	COUNTY	TOTAL SHEETS	SHEET NO.
13-0007-00-SW		EFFINGHAM	20	11
FED. ROAD DIST. NO. 7	ILLINOIS	FED. AID PROJECT	CONTRACT #95750	



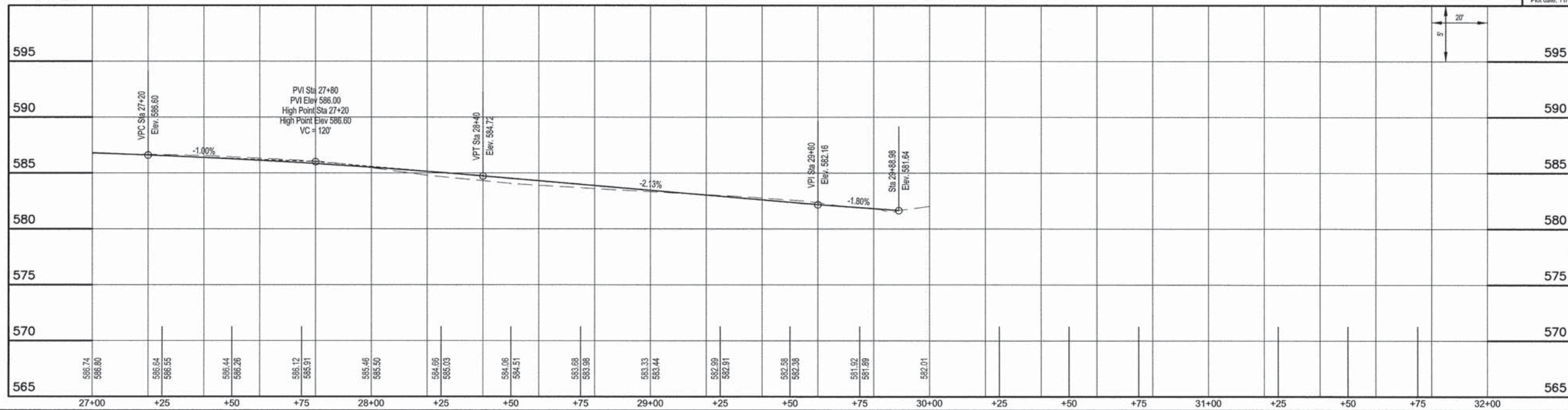
LEGEND

	P.C.C. SIDEWALK (SPECIAL), 4"
	P.C.C. DRIVEWAY PAVEMENT 6 INCH
	DETECTABLE WARNING
	P.C.C. SIDEWALK (SPECIAL), 6"

NOTE: CONTRACTOR TO FIELD VERIFY BETWEEN BENCHMARK ELEVATIONS

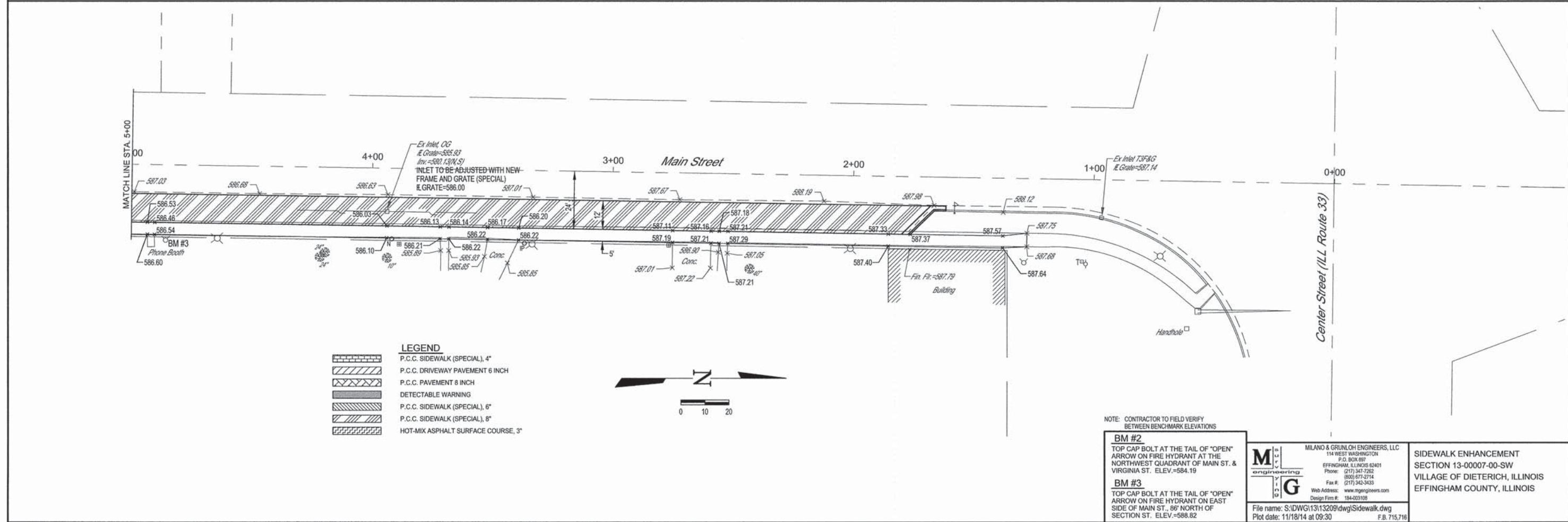
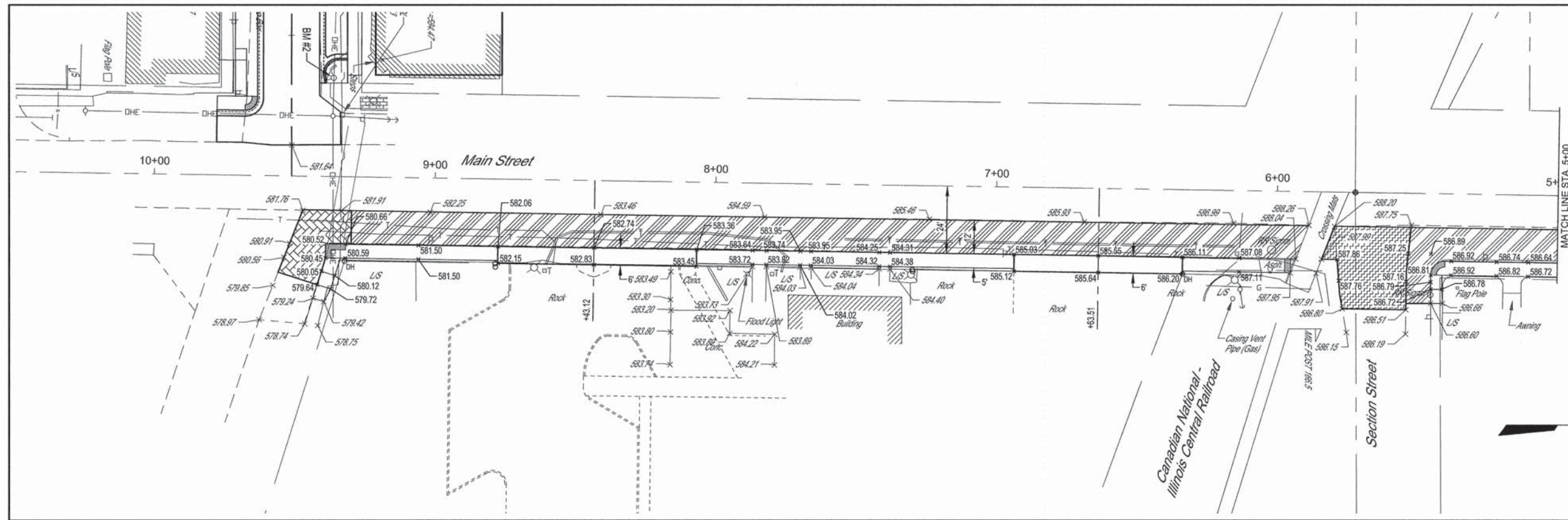
- BM #1**
TOP SOUTHEAST CAP BOLT ON FIRE HYDRANT AT THE NORTHWEST QUADRANT OF PINE ST. & VIRGINIA ST. ELEV. =590.29
- BM #2**
TOP CAP BOLT AT THE TAIL OF "OPEN" ARROW ON FIRE HYDRANT AT THE NORTHWEST QUADRANT OF MAIN ST. & VIRGINIA ST. ELEV. =584.19

MILANO & GRUNLOH ENGINEERS, LLC
 114 WEST WASHINGTON
 P.O. BOX 897
 EFFINGHAM, ILLINOIS 62401
 Phone: (217) 347-7282
 (800) 877-2714
 Fax #: (217) 342-3433
 Web Address: www.mgengineers.com
 Design Firm #: 184-003108
 File name: S:\DWG\131320\95750\95750Sidewalk.dwg
 Plot date: 11/15/14 at 09:20 F.B. 715,716



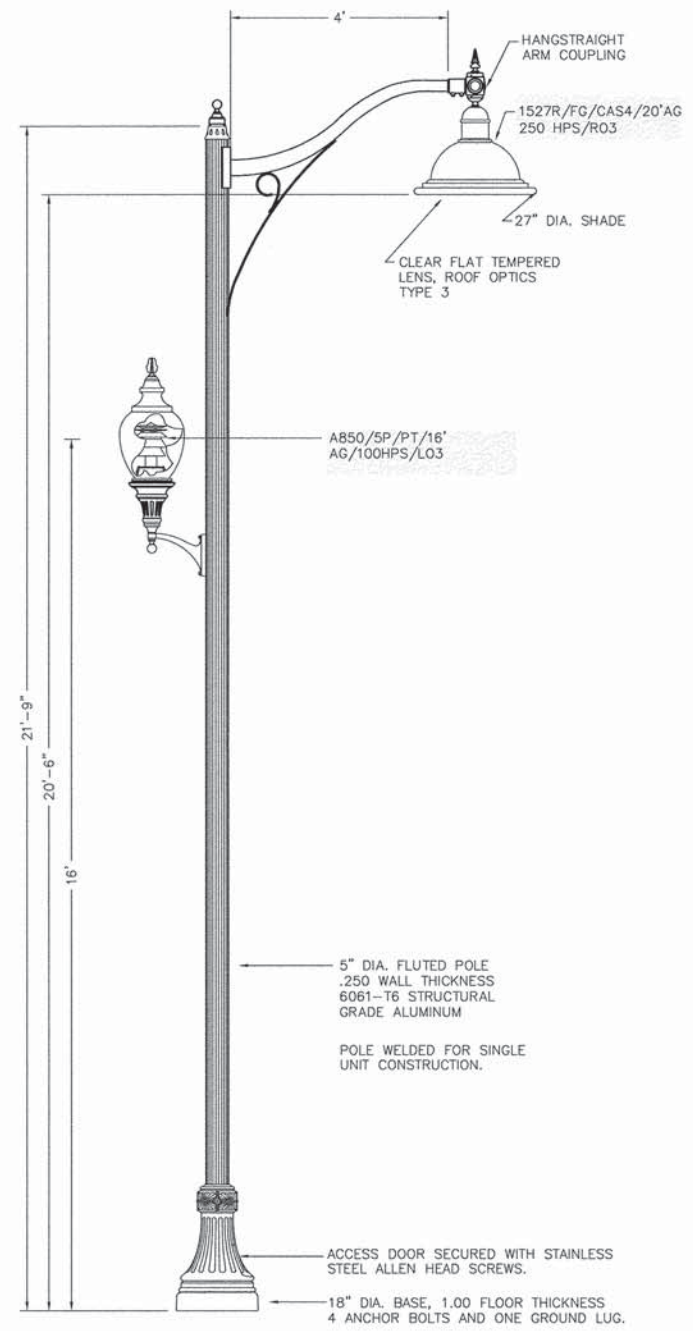
VIRGINIA STREET

ROUTE NO.	SECTION	COUNTY	TOTAL SHEETS	SHEET NO.
13-0007-00-SW		EFFINGHAM	20	12
FED. ROAD DIST. NO. 7	ILLINOIS	FED. AID PROJECT-	CONTRACT #95750	

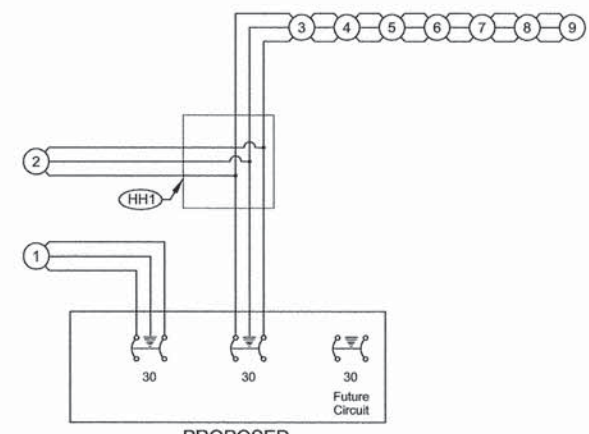


ROUTE NO.	SECTION	COUNTY	TOTAL SHEETS	SHEET NO.
	13-0007-00-SW	EFFINGHAM	20	13
FED. ROAD DIST. NO. 7	ILLINOIS	FED. AID PROJECT		

CONTRACT #95750



STREET & SIDEWALK LIGHT "OR APPROVED EQUAL"



- LEGEND**
- # PROPOSED LIGHT ASSEMBLY
 - CIRCUIT BREAKER
 - 30 CIRCUIT AMPERAGE

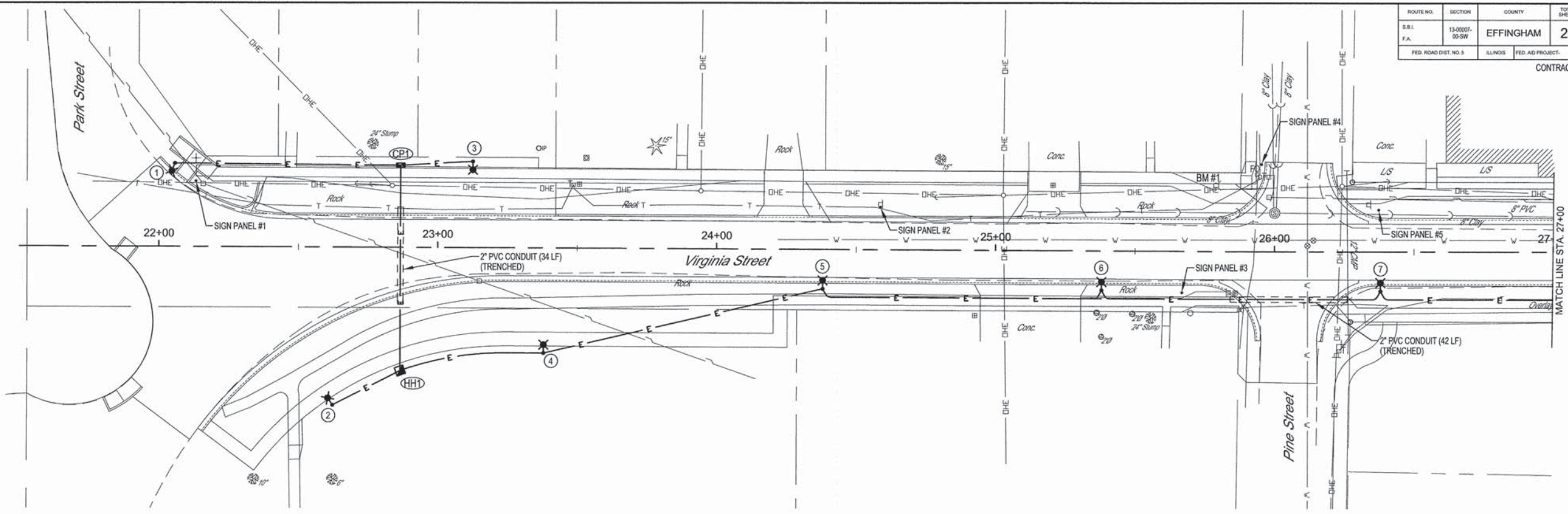
PROPOSED
LIGHTING CONTROLLER CP1
w/PHOTO CELL

WIRING DIAGRAM
VIRGINIA STREET

	MILANO & GRUNLOH ENGINEERS, LLC 114 WEST WASHINGTON P.O. BOX 687 EFFINGHAM, ILLINOIS 62401 Phone: (217) 347-7262 (800) 477-2714 Fax #: (217) 345-9433 Web Address: www.mgengineers.com Design Firm #: 184-003106	LIGHT POLE DETAIL SIDEWALK ENHANCEMENT SECTION 13-0007-00-SW VILLAGE OF DIETERICH, ILLINOIS EFFINGHAM COUNTY, ILLINOIS
	File name: S:\DWG\13\13209\dwg\ltp Details.dwg Plot date: 11/11/14 at 15:00	

ROUTE NO.	SECTION	COUNTY	TOTAL SHEETS	SHEET NO.
S.R.L.	13-00007-00-SW	EFFINGHAM	20	14
F.A.				
FED. ROAD DIST. NO. 5	ILLINOIS	FED. AID PROJECT:		

CONTRACT #95750



POINT	STATION	LOCATION	DESCRIPTION
1	22+05.7	29.8' Lt	STREET AND SIDEWALK LIGHT POLE
2	22+62.4	56.5' Rt	STREET AND SIDEWALK LIGHT POLE
CP1	22+86.6	29.4' Lt	PROPOSED CONTROLLER
HH1	22+86.6	44.1' Rt	HANDHOLE
3	23+12.5	30.9' Lt	STREET AND SIDEWALK LIGHT POLE
4	23+38.0	37.6' Rt	STREET AND SIDEWALK LIGHT POLE
5	24+38.0	14.1' Rt	STREET AND SIDEWALK LIGHT POLE
6	25+38.0	14.1' Rt	STREET AND SIDEWALK LIGHT POLE
7	26+38.0	14.1' Rt	STREET AND SIDEWALK LIGHT POLE

PT TO PT	STATION TO STATION	LOCATION RT.	LOCATION LT.	UNDERGROUND CONDUIT, PVC, 2\" DIA. (TRENCHED) FOOT	UNIT DUCT, 600V 2-1C NO. 6, 1/C NO. 6 GROUND, (XLP-TYPE USE), 1\" DIA. POLYETHYLENE FOOT
CP1	1	22+86.6	22+05.7	29.4/29.8	82
CP1	2	22+86.6	22+62.4	56.5	101
CP1	HH1	22+86.6	22+86.6	44.1	74
CP1	3	22+86.6	23+12.5	29.4/30.9	26
HH1	4	22+86.6	23+38.0	44.1/37.6	53
4	5	23+38.0	24+38.0	37.6/14.1	103
5	6	24+38.0	25+38.0	14.1/14.1	100
6	7	25+38.0	26+38.0	14.1/14.1	100
Total					639

LOCATION	HANDHOLE EACH	LIGHTING CONTROLLER, POLE MOUNTED, 240 VOLT, 30 AMP EACH	LIGHT POLE FOUNDATION, 24\" DIAMETER FOOT	LIGHT POLE, STREET AND SIDEWALK, SPECIAL EACH
29.8' Lt Sta. 22+05.7			5	1
56.5' Rt Sta. 22+62.4			5	1
29.4' Lt Sta. 22+86.6		1		
44.1' Rt Sta. 22+86.6	1			
30.9' Lt Sta. 23+12.5			5	1
28.1' Rt Sta. 23+38.0			5	1
14.1' Rt Sta. 24+38.0			5	1
14.1' Rt Sta. 25+38.0			5	1
14.1' Rt Sta. 26+38.0			5	1
TOTAL	1	1	35	7

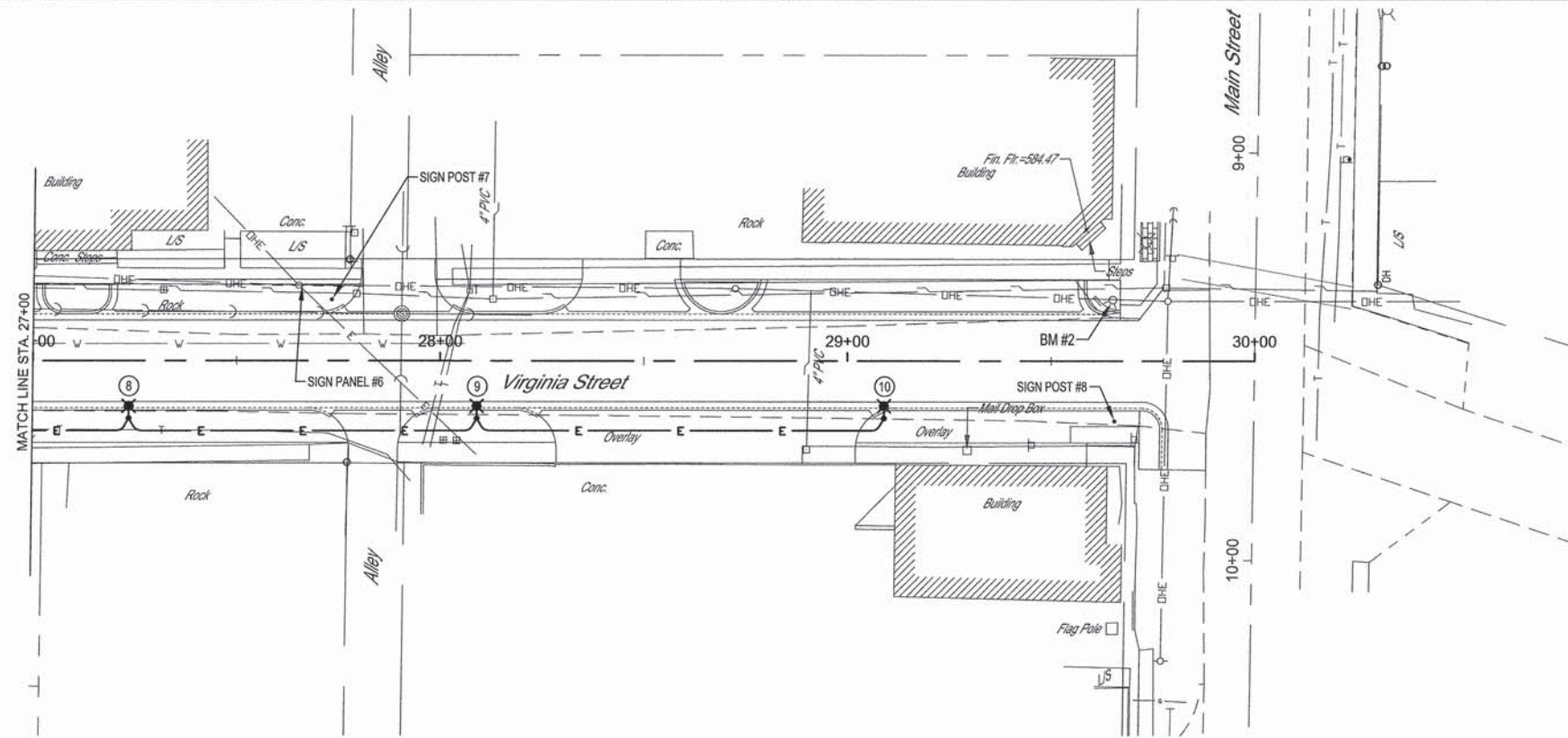
MILANO & GRUNLOH ENGINEERS, LLC
 114 WEST WASHINGTON
 P.O. BOX 897
 EFFINGHAM, ILLINOIS 62401
 Phone: (217) 342-7262
 (800) 677-2714
 Fax #: (217) 342-3433
 Web Address: www.mgeengineers.com
 Design Firm # 184-00108

LIGHTING AND SIGNAGE PLAN
 SIDEWALK ENHANCEMENT
 SECTION 13-00007-00-SW
 VILLAGE OF DIETERICH, ILLINOIS
 EFFINGHAM COUNTY, ILLINOIS

File name: S:\DWG\1313209\dwg\Lighting.dwg
 Plot date: 11/11/14 at 15:05

ROUTE NO.	SECTION	COUNTY	TOTAL SHEETS	SHEET NO.
S.B.L. F.A.	13-0007-00-SW	EFFINGHAM	20	15
FED. ROAD DIST. NO. 5	ILLINOIS	FED. AID PROJECT-		

CONTRACT #95750



POINT	STATION	LOCATION	DESCRIPTION
8	27+23.5	14.1' Rt	STREET AND SIDEWALK LIGHT POLE
9	28+08.9	14.1' Rt	STREET AND SIDEWALK LIGHT POLE
10	29+08.9	14.1' Rt	STREET AND SIDEWALK LIGHT POLE

PT TO PT	STATION TO STATION	LOCATION RT.	LOCATION LT.	UNDERGROUND CONDUIT, PVC, 2" DIA. (TRENCHED) FOOT	UNIT DUCT, 600V 2-1C NO. 6, 1/2" DIA. (XLP-TYPE USE), 1" DIA. POLYETHYLENE FOOT	
7	8	26+38.0	27+23.5	14.1/14.1		86
8	9	27+23.5	28+08.9	14.1/14.1		100
9	10	28+08.9	29+08.9	14.1/14.1		100
Total						286

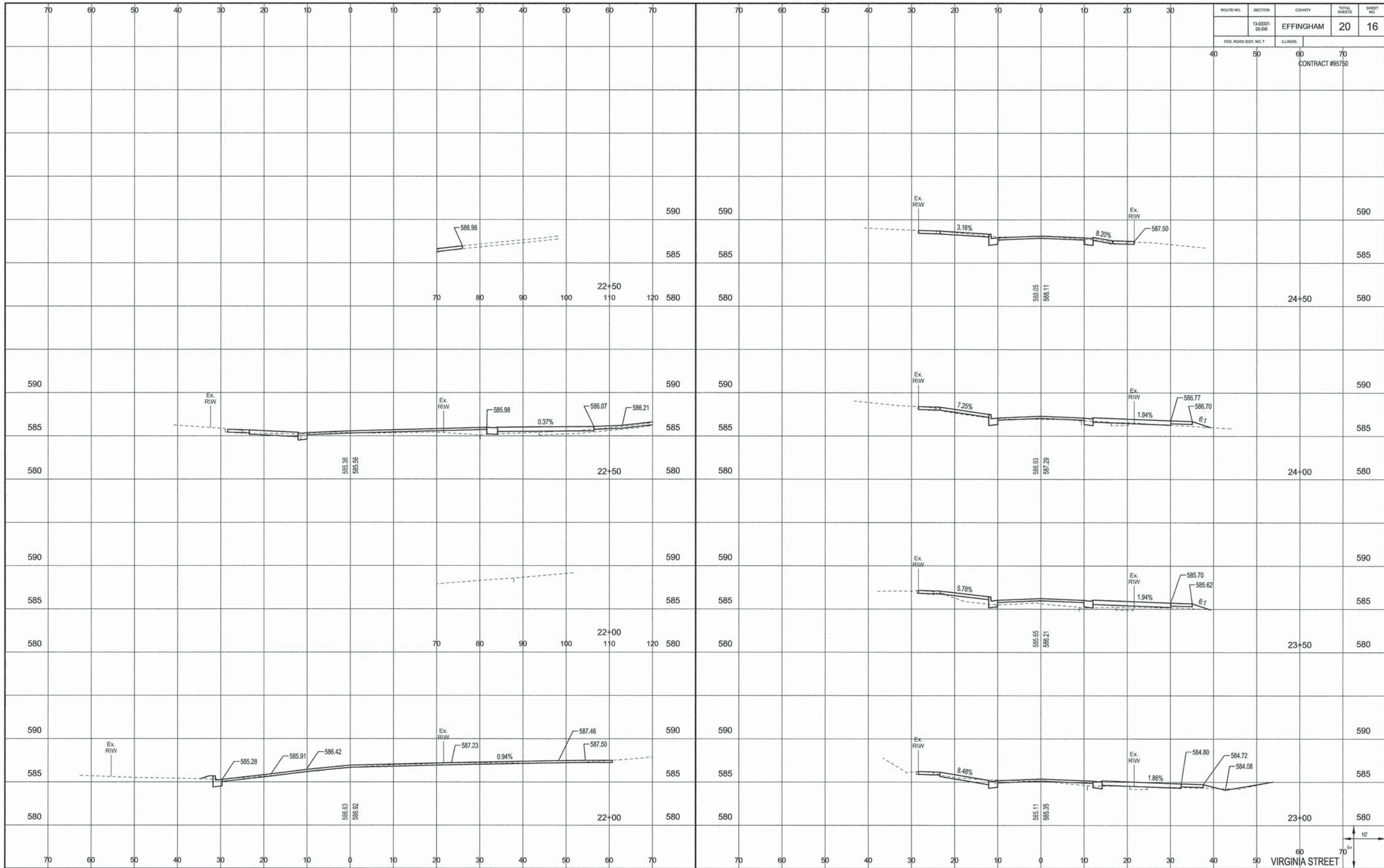
LOCATION	HANDHOLE EACH	LIGHTING CONTROLLER, POLE MOUNTED, 240 VOLT, 30 AMP EACH	LIGHT POLE FOUNDATION, 24" DIAMETER FOOT	LIGHT POLE, STREET AND SIDEWALK, SPECIAL EACH
14.1'Rt Sta. 27+23.5			5	1
14.1'Rt Sta. 28+08.9			5	1
14.1'Rt Sta. 29+08.9			5	1
TOTAL	0	0	15	3

MILANO & GRUNLOH ENGINEERS, LLC
 114 WEST WASHINGTON
 P.O. BOX 897
 EFFINGHAM, ILLINOIS 62401
 Phone: (217) 342-7282
 (800) 677-2714
 Fax #: (217) 342-3433
 Web Address: www.mg-engineers.com
 Design Firm #: 184-03198

LIGHTING AND SIGNAGE PLAN
 SIDEWALK ENHANCEMENT
 SECTION 13-00007-00-SW
 VILLAGE OF DIETERICH, ILLINOIS
 EFFINGHAM COUNTY, ILLINOIS

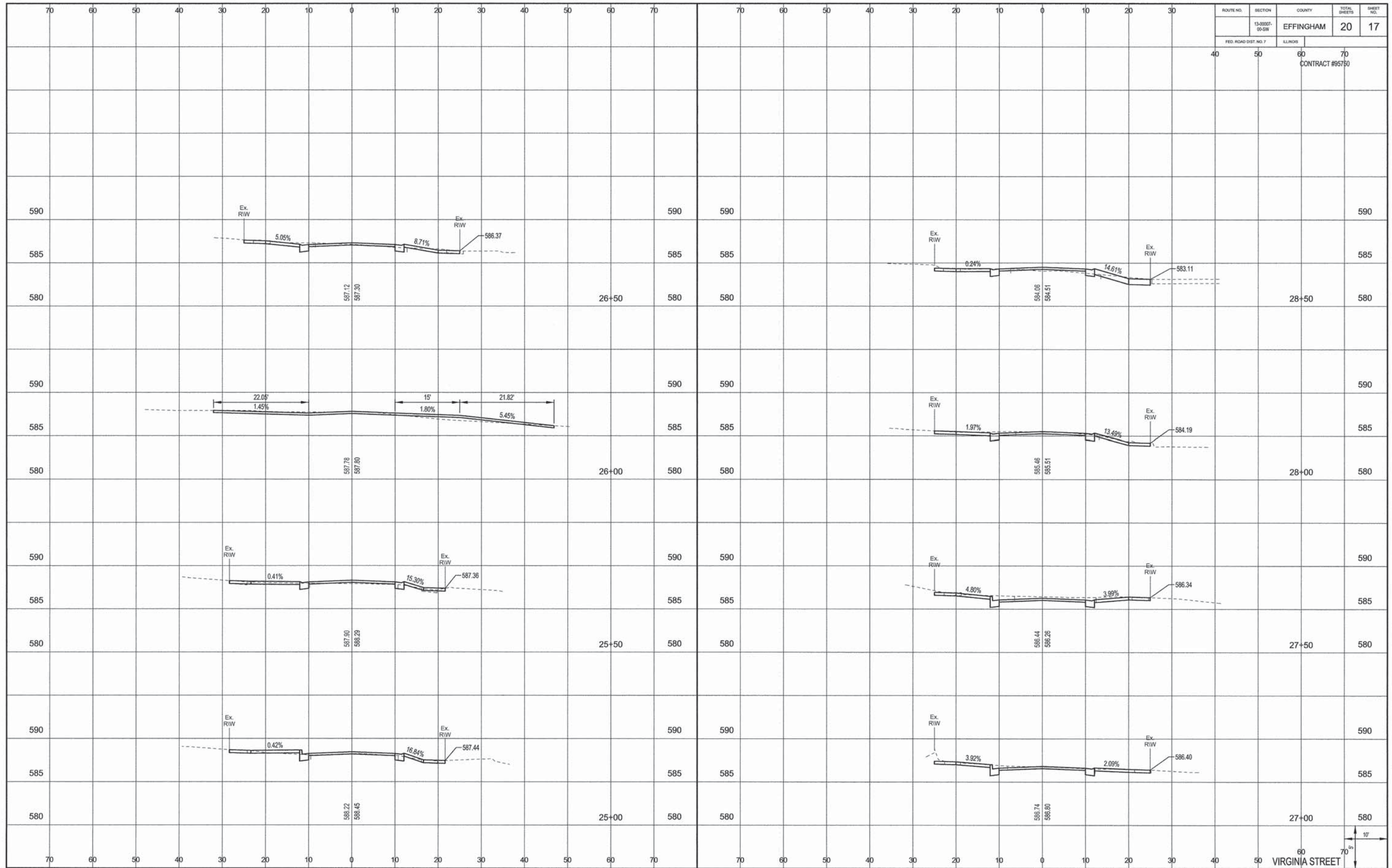
File name: S:\DWG\13\13209\dwg\Lighting.dwg
 Plot date: 11/11/14 at 15:05

ROUTE NO.	SECTION	COUNTY	TOTAL SHEETS	SHEET NO.
13-0007-00-SW		EFFINGHAM	20	16
FED. ROAD DIST. NO. 7	ILLINOIS			
40	50	60	70	
CONTRACT #95750				



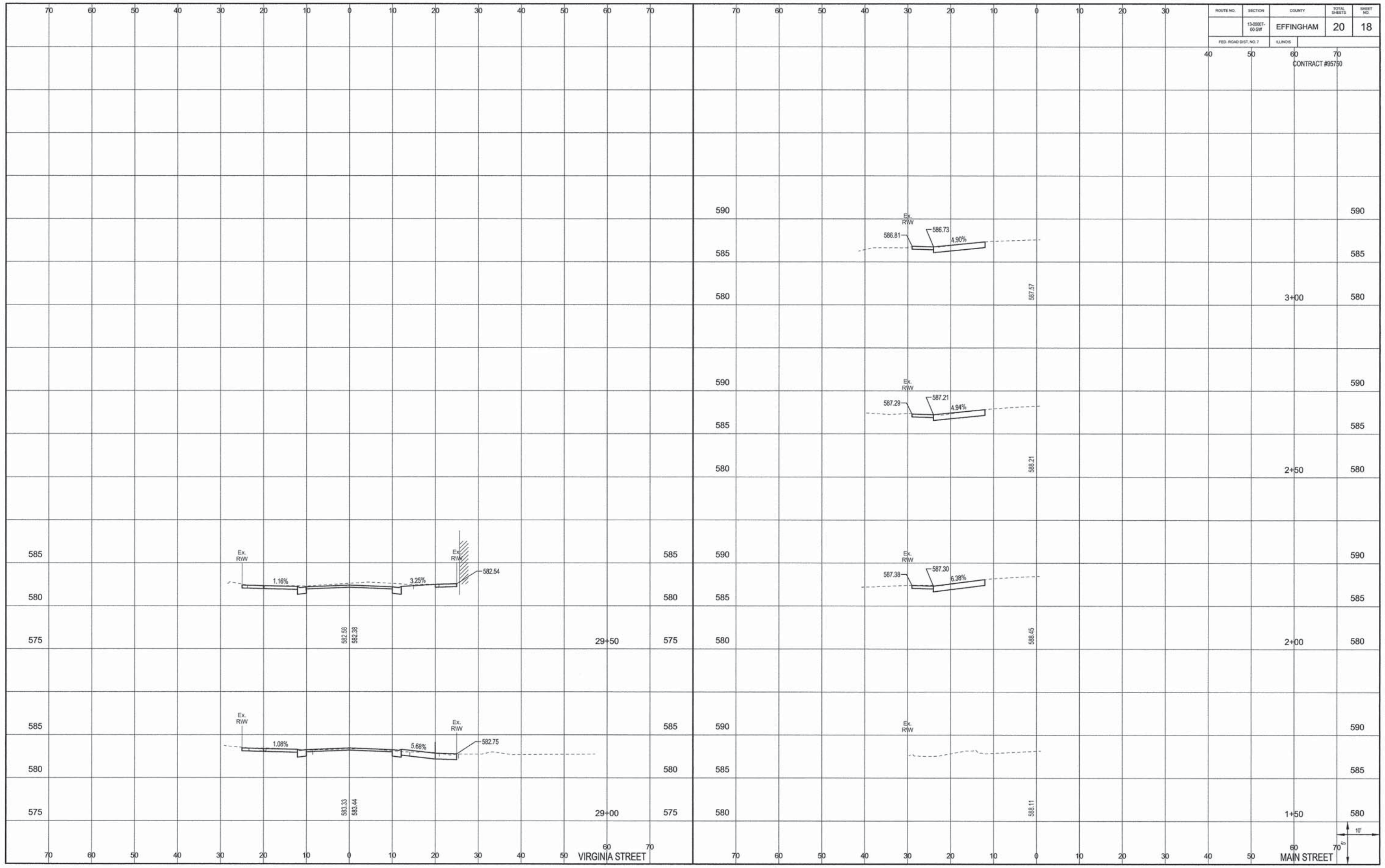
VIRGINIA STREET

ROUTE NO.	SECTION	COUNTY	TOTAL SHEETS	SHEET NO.
13-0007-00-SW		EFFINGHAM	20	17
FED. ROAD DIST. NO. 7	LLINOS	CONTRACT #95750		



1" = 10'
 70' = 70'
 VIRGINIA STREET

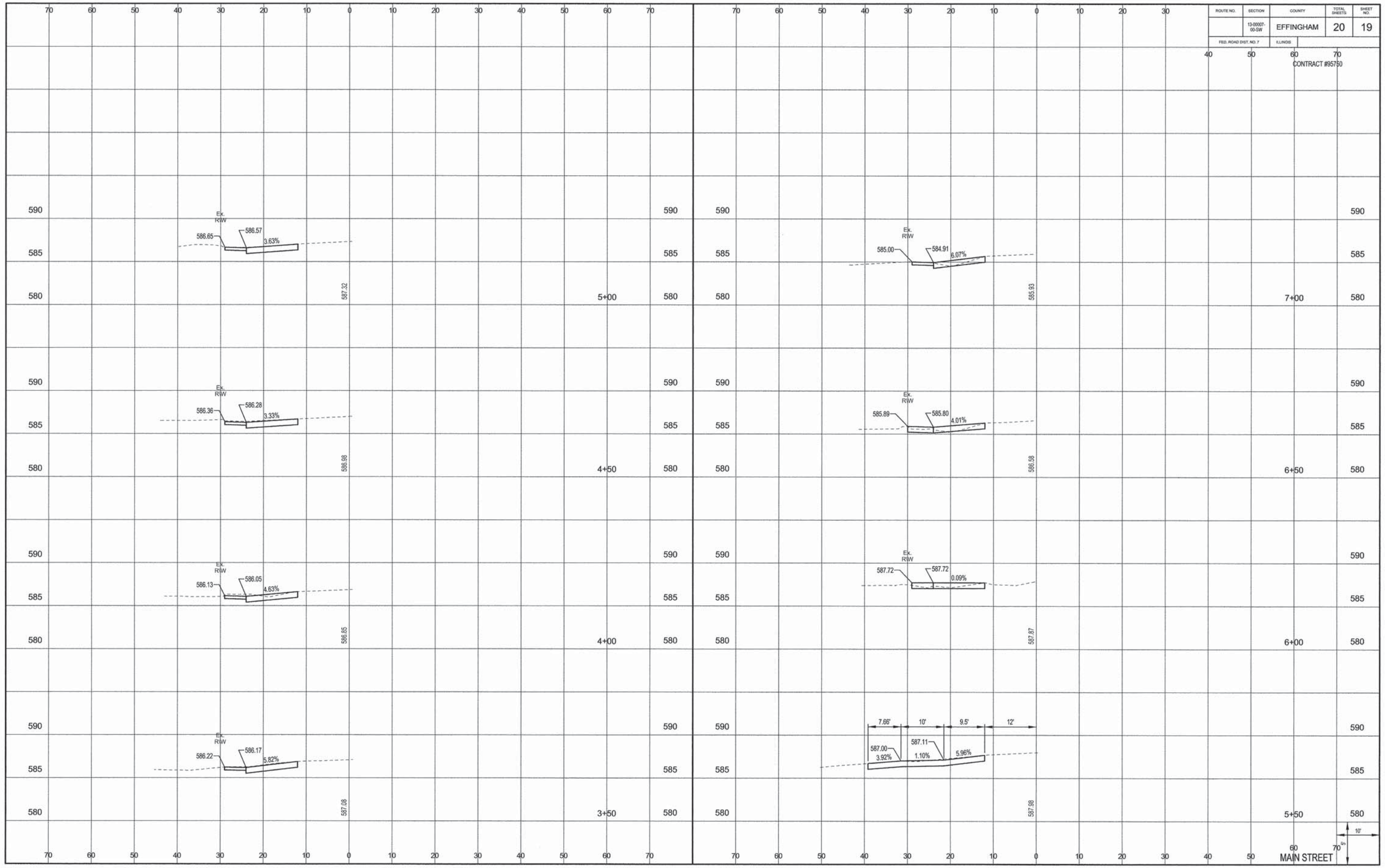
ROUTE NO.	SECTION	COUNTY	TOTAL SHEETS	SHEET NO.
13-0007-00-SW		EFFINGHAM	20	18
FED. ROAD DIST. NO. 7	ILLINOIS			
40	50	60	70	
CONTRACT #95750				



VIRGINIA STREET

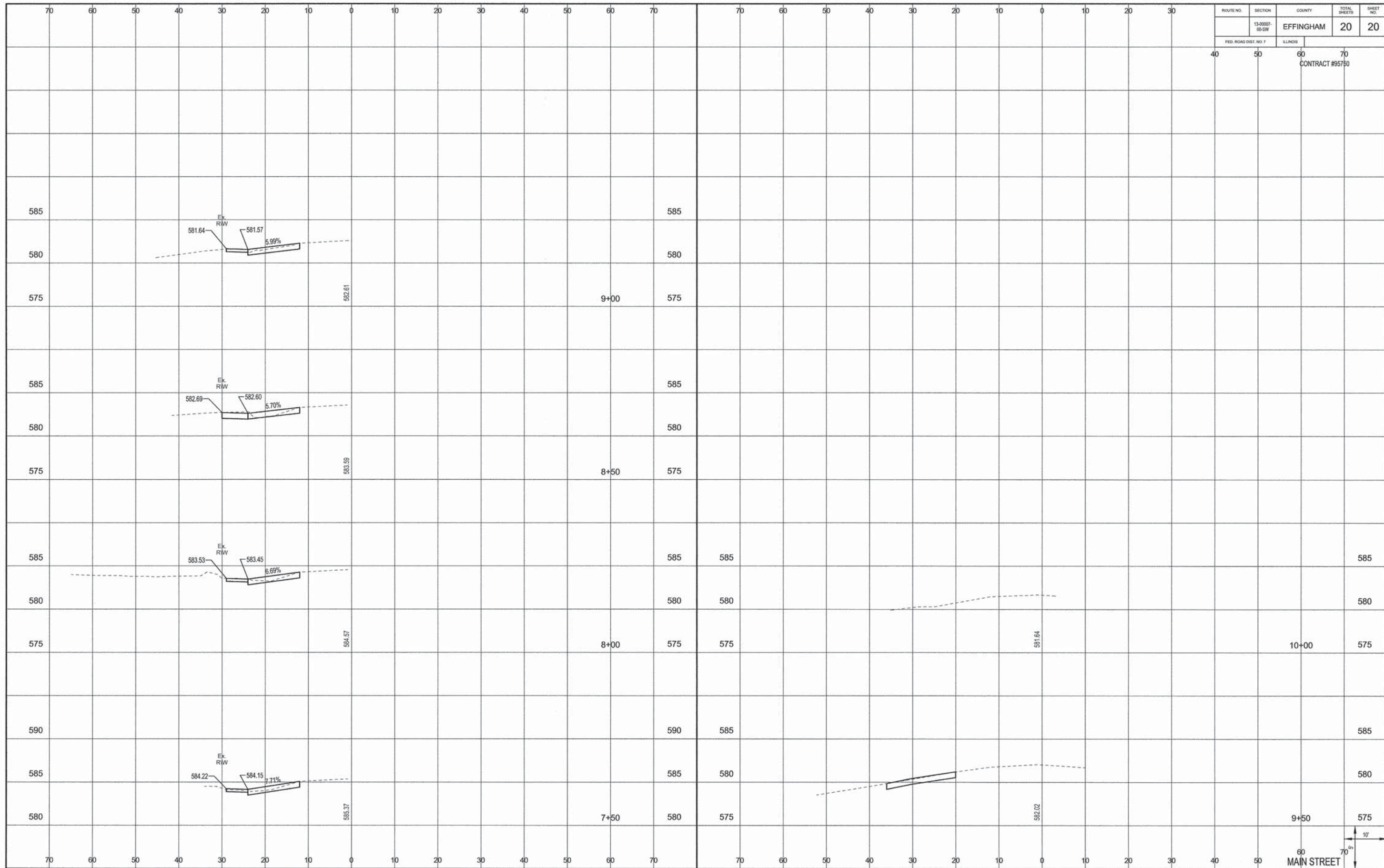
MAIN STREET

ROUTE NO.	SECTION	COUNTY	TOTAL SHEETS	SHEET NO.
13-0007-00-SW		EFFINGHAM	20	19
FED. ROAD DIST. NO. 7		LENGTH		
40	50	60	70	CONTRACT #95750



70m
10'
MAIN STREET

ROUTE NO.	SECTION	COUNTY	TOTAL SHEETS	SHEET NO.
	13-0007-00-SW	EFFINGHAM	20	20
FED. ROAD DIST. NO. 7		LLINDS		
40	50	60	70	
CONTRACT #95780				



1" = 70'
 MAIN STREET