

STATE OF ILLINOIS

DEPARTMENT OF TRANSPORTATION  
DIVISION OF HIGHWAYS

**PROPOSED HIGHWAY PLANS**

FAS RTE 1317: IL 113 (RIVER ST)  
GRAY RD TO KANKAKEE CO. LINE

SECTION: 112A-RS

RESURFACING AND CENTERLINE RUMBLE STRIPS

WILL COUNTY

C-91-323-11

F.A.S. RTE.	SECTION	COUNTY	TOTAL SHEETS	SHEET NO.
1317	112A-RS	WILL	21	1
		ILLINOIS	CONTRACT NO. 60N53	

D-91-323-11



FOR INDEX OF SHEETS, SEE SHEET NO. 2

IMPROVEMENT IS LOCATED  
IN CUSTER TOWNSHIP

TRAFFIC DATA

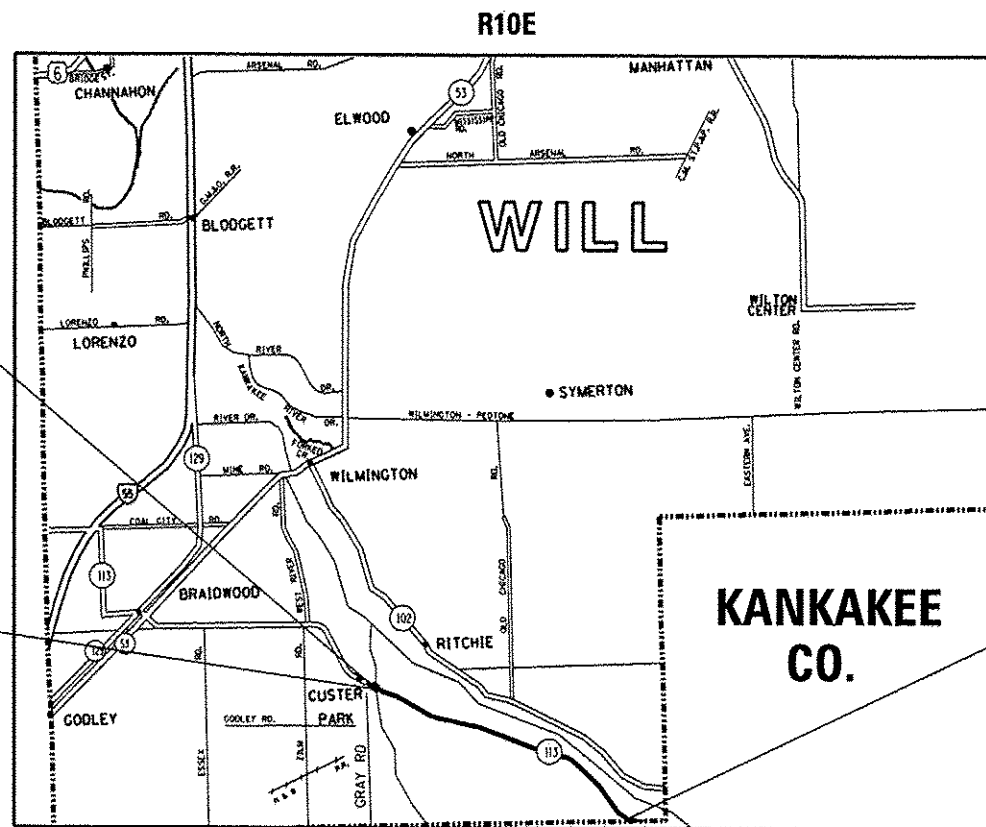
2013 ADT = 2700

POSTED SPEED = 55 MPH

IMPROVEMENT BEGINS  
STA 11+00

IL 113 OVER TERRY CREEK  
SN 099-0172

IMPROVEMENT ENDS  
STA 267+50



J.U.L.I.E.  
JOINT UTILITY LOCATION INFORMATION FOR EXCAVATION  
1-800-892-0123  
OR 811

PROJECT ENGINEER MIDY, J. ALAIN (847) 221-3056  
PROJECT MANAGER RAYYAN, ISSAM (847) 705-4178

CONTRACT NO. 60N53

GROSS AND NET LENGTH OF IMPROVEMENT = 25650 FT = 4.86 MILES

STATE OF ILLINOIS  
DEPARTMENT OF TRANSPORTATION  
DIVISION OF HIGHWAYS

SUBMITTED May 15 20 14  
John Faustmann  
DEPUTY DIRECTOR OF HIGHWAYS, REGION ENGINEER

June 27 20 14  
John D. Baranzelli, PE  
acting ENGINEER OF DESIGN AND ENVIRONMENT

June 27 20 14  
Omer Osman, PE  
DIRECTOR OF HIGHWAYS, CHIEF ENGINEER

PRINTED BY THE AUTHORITY  
OF THE STATE OF ILLINOIS

## INDEX OF SHEETS

SHEET NO.	DESCRIPTION
1	COVER SHEET
2	INDEX OF SHEETS, STANDARDS AND GENERAL NOTES
3	SUMMARY OF QUANTITIES
4	TYPICAL SECTIONS
5-13	ROADWAY & PAVEMENT MARKING PLANS
14	EXISTING BRIDGE PLAN (SN 099-0172)
15	PAVEMENT PATCHING FOR HMA SURFACED PAVEMENT (BD-22)
16	BUTT JOINT AND HMA TAPER DETAILS (BD-32)
17	RUMBLE STRIPES FOR CENTERLINE, NON-FREEWAY (BD-55)
18	TRAFFIC CONTROL AND PROTECTION FOR SIDE ROADS, INTERSECTIONS AND DRIVEWAYS (TC-10)
19	TYPICAL APPLICATIONS RAISED REFLECTIVE PAVEMENT MARKERS (SNOW-PLOW RESISTANT) (TC-11)
20	DISTRICT ONE TYPICAL PAVEMENT MARKINGS (TC-13)
21	ARTERIAL ROAD INFORMATION SIGNING (TC-22)

## LIST OF STATE STANDARDS

STANDARD NO.	DESCRIPTION
442201-03	CLASS C AND D PATCHES
482011-03	BITUMINOUS SHOULDER STRIPS/SHOULDERS WITH RESURFACING OR WIDENING AND RESURFACING PROJECTS
701011-04	OFF-ROAD MOVING OPERATIONS, 2L, 2W, DAY ONLY
701201-04	LANE CLOSURE 2L, 2W, DAY ONLY FOR SPEEDS >45 MPH
701301-04	LANE CLOSURE 2L, 2W SHORT TIME OPERATIONS
701306-03	LANE CLOSURE 2L, 2W SLOW MOVING OPERATIONS DAY ONLY, FOR SPEEDS >45 MPH
701311-03	LANE CLOSURE 2L, 2W MOVING OPERATIONS-DAY ONLY
701336-06	LANE CLOSURE 2L, 2W WORK AREAS IN SERIES, FOR SPEEDS >45 MPH
701901-03	TRAFFIC CONTROL DEVICES
780001-04	TYPICAL PAVEMENT MARKINGS

## GENERAL NOTES

BEFORE STARTING ANY EXCAVATION, THE CONTRACTOR SHALL CALL "JULIE" AT 800-892-0123 OR 811 FOR FIELD LOCATIONS OF BURIED ELECTRIC, TELEPHONE AND GAS FACILITIES. (48 HOUR NOTIFICATION IS REQUIRED)

THE CONTRACTOR SHALL COORDINATE CONSTRUCTION ACTIVITIES WITH UTILITY COMPANIES AND CUSTER TOWNSHIP.

THE CONTRACTOR WILL NOT BE ALLOWED TO SET UP A YARD OR FIELD OFFICE ON STATE PROPERTY WITHOUT WRITTEN PERMISSION FROM THE DEPARTMENT.

WHEN MILLED PAVEMENT IS OPEN TO TRAFFIC THE MAXIMUM GRADE DIFFERENTIAL BETWEEN PASSES OF THE MILLING MACHINE SHALL NOT EXCEED 1 1/2 INCHES (40MM) WHERE THE SPEED LIMIT IS 40 MPH (80KM/H) OR LESS AND 1 INCH (25 MM) WHERE THE SPEED LIMIT IS GREATER THAN 40 MPH (80 KM/H), WITH WRITTEN APPROVAL OF THE ENGINEER, A MAXIMUM GRADE DIFFERENTIAL OF 3 INCHES (75 MM) MAY BE ALLOWED IF THE EDGE OF THE MILLING IS SLOPED A MINIMUM 1:3 (V:H) OR A NOTCHED LONGITUDINAL WEDGE IS USED.

BEFORE BEGINING ANY WORK, THE CONTRACTOR SHALL RETAIN AND RECORD FOR FUTURE REFERENCE, ALL EXISTING PAVEMENT MARKING LINES AND REVISED REFLECTIVE PAVEMENT MARKERS IN ORDER THAT THESE LOCATIONS CAN BE RE-ESTABLISHED FOR STRIPING, EXACT LOCATIONS OF ALL PAVEMENT MARKINGS SHALL BE AS DIRECTED BY THE ENGINEER.

THE ENGINEER SHALL CONTACT CORY JUCUS, ARTERIAL TRAFFIC OPERATIONS ENGINEER AT (847) 705-4411 A MINIMUM OF TWO (2) WEEKS PRIOR TO THE PLACEMENT OF PERMANENT PAVEMENT MARKINGS.

DRAINAGE ADJUSTMENT OR RECONSTRUCTION LOCATIONS WILL BE DETERMINED IN THE FIELD BY THE ENGINEER.

THE CONTRACTOR SHALL CONTACT THE DISTRICT ONE TRAFFIC CONTROL SUPERVISOR AT (847) 705-4470 A MINIMUM OF 72 HOURS IN ADVANCE OF BEGINNING WORK.

IT SHALL BE THE CONTRACTOR'S RESPONSIBILITY TO VERIFY ALL DIMENSIONS AND CONDITIONS EXISTING IN THE FIELD PRIOR TO CONSTRUCTION AND ORDERING OF MATERIALS.

THE CONTRACTOR SHALL BE REQUIRED TO PROVIDE ACCESS TO ABBUTTING PROPERTY AT ALL TIMES DURING THE CONSTRUCTION OF THIS PROJECT.

DO NOT SCALE PLANS FOR CONSTRUCTION DIMENSIONS.

ALL DAMAGE TO EXISTING PAVEMENT MARKINGS OR RAISED REFLECTIVE PAVEMENT MARKERS OUTSIDE THE REMOVAL LINE SHOWN ON THE PLANS SHALL BE REPLACED AT NO ADDITIONAL COST TO THE DEPARTMENT.

ALL PAVEMENT PATCHING LOCATIONS WILL BE DETERMINED IN THE FIELD BY THE ENGINEER.

THE THICKNESS OF THE HMA MIXTURE SHOWN ON THE PLANS IS THE NOMINAL THICKNESS. DEVIATIONS FROM THE NOMINAL THICKNESS WILL BE PERMITTED WHEN SUCH DEVIATIONS OCCUR DUE TO IRREGULARITIES IN THE EXISTING SURFACE OR BASE ON WHICH THE HMA MIXTURE IS PLACED.

PAVEMENT MARKING TAPE, TYPE III SHALL BE USED FOR SHORT TERM PAVEMENT MARKINGS ON ALL FINAL SURFACES. THE COST OF THE PAVEMENT MARKING TAPE, TYPE III AND ITS REMOVAL SHALL BE INCLUDED IN THE COST OF SHORT TERM PAVEMENT MARKING.

ALL PAVEMENT MARKINGS SHALL BE REMOVED FROM PAVEMENT BEFORE HOT-IN-PLACE

RECYCLING OPERATION BEGINS.

FILE NAME: c:\pwork\pwork\gorengautab\0249442\0132311-shc-plan2.dgn	USER NAME: Gorengautab	DESIGNED: -	REVISIONS: -	STATE OF ILLINOIS DEPARTMENT OF TRANSPORTATION	FAS 1317 /IL 113 (RIVER ST) GRAY RD TO KANKAKEE CO. LINE INDEX OF SHEETS, STATE STANDARDS AND GENERAL NOTES	F.A.S. RTE.	SECTION	COUNTY	TOTAL SHEETS	SHEET NO.
PLOT SCALE: 100.0000 / 1" = 100'	CHECKED: -	REVISIONS: -	1317			112A-RS	WILL	21	2	
PLOT DATE: 5/16/2014	DATE: -	REVISIONS: -	SCALE: SHEET NO. OF SHEETS STA. TO STA.			CONTRACT NO. 60W53		ILLINOIS FED. AID PROJECT		

SUMMARY OF QUANTITIES				CONSTRUCTION TYPE CODE 0005				
CODE NO	ITEM	UNIT	TOTAL QUANTITIES	URBAN 100% STATE 0005				
<del>40600827</del>	<del>POLYMERIZED LEVELING BINDER (MACHINE METHOD) - IL-4, 75, N50</del>	<del>TON</del>	<del>2840</del>	<del>2840</del>				
<del>40600835</del>	<del>CONSTRUCTING TEST STRIP</del>	<del>EACH</del>	<del>2</del>	<del>2</del>				
40600982	HOT-MIX ASPHALT SURFACE REMOVAL - BUTT JOINT	SO YD	200	200				
40603085	HOT-MIX ASPHALT BINDER COURSE, IL-19.0, N70	TON	9315	9315				
40603340	HOT-MIX ASPHALT SURFACE COURSE, MIX "D", N70	TON	6265	6265				
<del>44000150</del>	<del>HOT-MIX ASPHALT SURFACE REMOVAL, 1/4"</del>	<del>SO YD</del>	<del>837</del>	<del>837</del>				
44201815	CLASS D PATCHES, TYPE II, 14 INCH	SO YD	330	330				
44201819	CLASS D PATCHES, TYPE III, 14 INCH	SO YD	65	65				
44201821	CLASS D PATCHES, TYPE IV, 14 INCH	SO YD	270	270				
48102100	AGGREGATE WEDGE SHOULDER, TYPE B	TON	2695	2695				
58700300	CONCRETE SEALER	SO FT	1420	1420				
67000400	ENGINEER'S FIELD OFFICE, TYPE A	CAL MO	3	3				
67100100	MOBILIZATION	L SUM	1	1				
70100450	TRAFFIC CONTROL AND PROTECTION, STANDARD 701201	L SUM	1	1				
70100460	TRAFFIC CONTROL AND PROTECTION, STANDARD 701306	L SUM	1	1				
70100600	TRAFFIC CONTROL AND PROTECTION, STANDARD 701336	L SUM	1	1				
70300100	SHORT TERM PAVEMENT MARKING	FOOT	13300	13300				

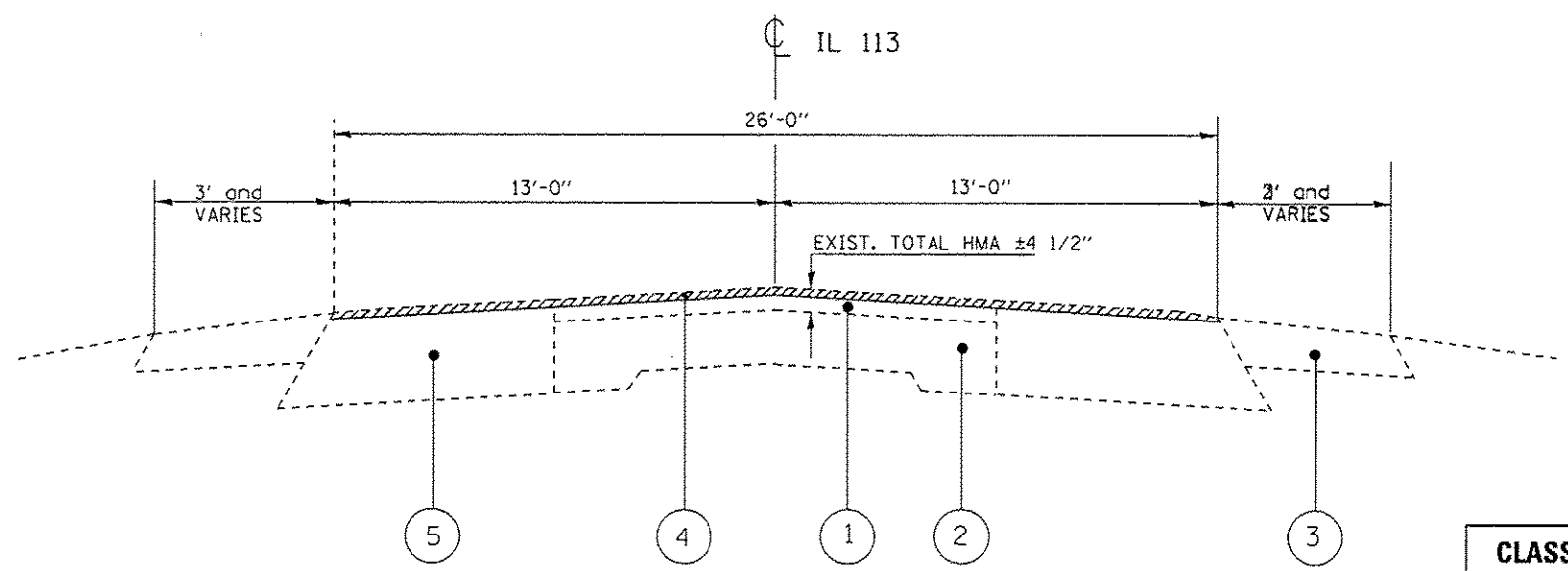
SUMMARY OF QUANTITIES				CONSTRUCTION TYPE CODE 0005				
CODE NO	ITEM	UNIT	TOTAL QUANTITIES	URBAN 100% STATE 0005				
70300220	TEMPORARY PAVEMENT MARKING - LINE 4"	FOOT	85005	85005				
70300280	TEMPORARY PAVEMENT MARKING - LINE 24"	FOOT	35	35				
70301000	WORK ZONE PAVEMENT MARKING REMOVAL	SO FT	28405	28405				
* 78000200	THERMOPLASTIC PAVEMENT MARKING - LINE 4"	FOOT	51200	51200				
* 78000650	THERMOPLASTIC PAVEMENT MARKING - LINE 24"	FOOT	35	35				
* 78008210	POLYUREA PAVEMENT MARKING TYPE I - LINE 4"	FOOT	408	408				
* 78100100	RAISED REFLECTIVE PAVEMENT MARKER	EACH	670	670				
78300100	PAVEMENT MARKING REMOVAL	SO FT	28510	28510				
78300200	RAISED REFLECTIVE PAVEMENT MARKER REMOVAL	EACH	670	670				
X0322052	ASPHALT REJUVENATING AGENT	GALLON	7450	7450				
X0326898	CENTER LINE - RUMBLE STRIP - 16"	FOOT	25450	25450				
X2020110	GRADING AND SHAPING SHOULDERS	UNIT	512	512				
40600275	BITUMINOUS MATERIALS (PRIME COAT)	POUND	33,570	33,570				
* X7800815	HOT SPRAY THERMOPLASTIC PAVEMENT MARKING LINE - 4 INCH	FOOT	33805	33805				
Z0010619	HOT IN-PLACE RECYCLING	SO YD	74500	74500				* SPECIALTY ITEMS
Z0030850	TEMPORARY INFORMATION SIGNING	SO FT	51.4	51.4				

FILE NAME:	USER NAME: Gorenouth	DESIGNED:	REVISED:	STATE OF ILLINOIS DEPARTMENT OF TRANSPORTATION	FAS 1317 /IL 113 (RIVER ST) GRAY RD TO KANKAKEE CO. LINE SUMMARY OF QUANTITIES	F.A.S. RTE. 1317	SECTION 1124-R5	COUNTY WILL	TOTAL SHEETS 21	SHEET NO. 3	
PLT SCALE: 100,000' / 1"	PLT DATE: 5/16/2014	DRAWN:	REVISED:		SCALE:	SHEET NO. OF SHEETS	STA. TO STA.	FED. ROAD DIST. NO. 1 ILLINOIS FED. AID PROJECT			
		CHECKED:	REVISED:								
		DATE:	REVISED:								

Rev

**LEGEND**

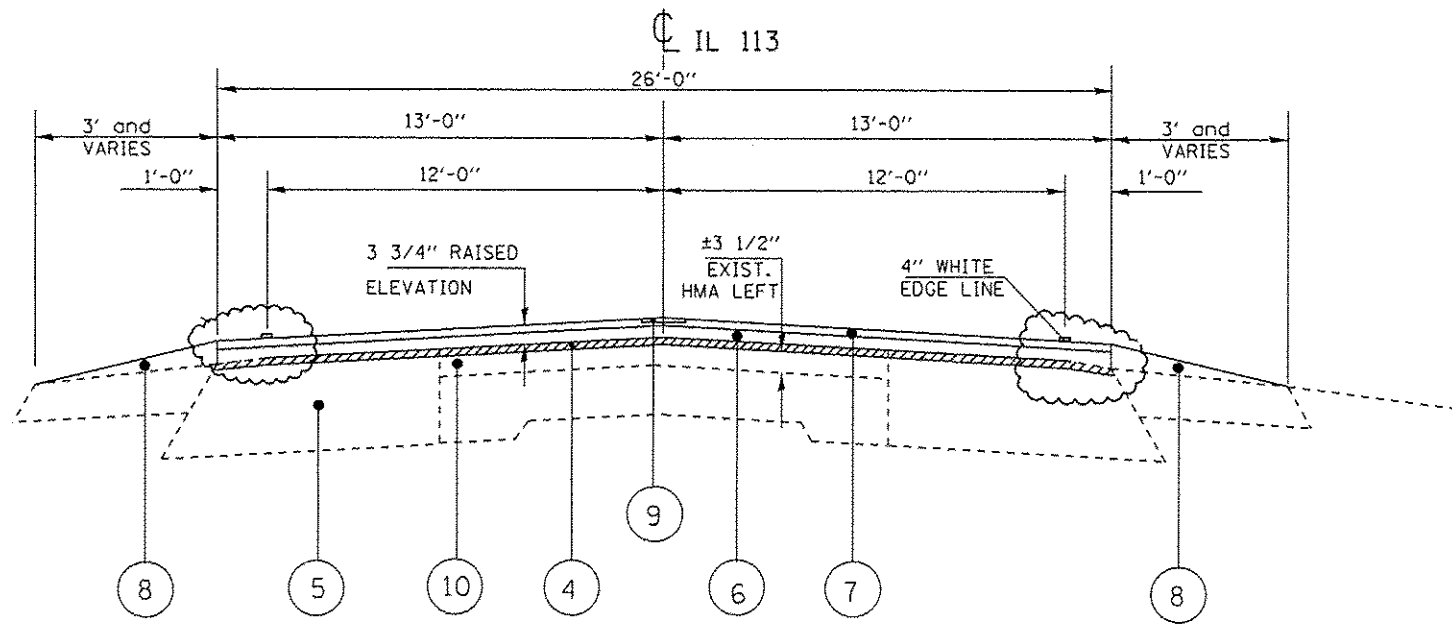
- ① EXISTING HMA ±4 1/2"
- ② EXISTING P.C.C. BASE COURSE 9"-7"-9"
- ③ EXISTING AGGREGATE SHOULDER, TYPE B
- ④ PROPOSED HOT IN-PLACE RECYCLING, 1"
- ⑤ EXISTING HMA ±14"
- ⑥ PROPOSED HMA BINDER COURSE, IL -19.0, N70, 2 1/4"
- ⑦ PROPOSED HMA SURFACE COURSE, MIX "D", N70, 1 1/2"
- ⑧ PROPOSED WEDGE AGGREGATE SHOULDERS, TYPE B
- ⑨ PROPOSED CENTERLINE RUMBLE STRIPS
- ⑩ EXISTING REMAINING HMA ± 3 1/2"



**EXISTING TYPICAL SECTION**  
STA 11+00 TO STA 267+50

**CLASS D PATCHES SHALL BE DONE BEFORE HOT-IN-PLACE RECYCLING**

HMA MIXTURE REQUIREMENTS		
MIXTURE TYPE	AIR VOIDS @ Ndes	QUALITY MANAGEMENT PROGRAM (QMP)
HOT-MIX ASPHALT SURFACE COURSE, MIX D, N70 (IL 9.5 mm)	4% @ 70 GYR	<b>QCP</b>
HMA BINDER COURSE, IL -19.0, N70	4% @ 70 GYR	<b>PFP</b>
CLASS D PATCHES, (HMA BINDER IL-19 mm)	4% @ 70 GYR	<b>Qc /Qa</b>
QMP Designation: Quality Control/Quality Assurance (QC/QA); Quality Control for Performance (QCP); Pay for Performance (PFP)		



**PROPOSED TYPICAL SECTION**  
STA 11+00 TO STA 267+50

**NOTE:** THE UNIT WEIGHT USED TO CALCULATE ALL HMA SURFACE MIXTURE QUANTITIES IS 112 LBS/SQ. YD. / IN.

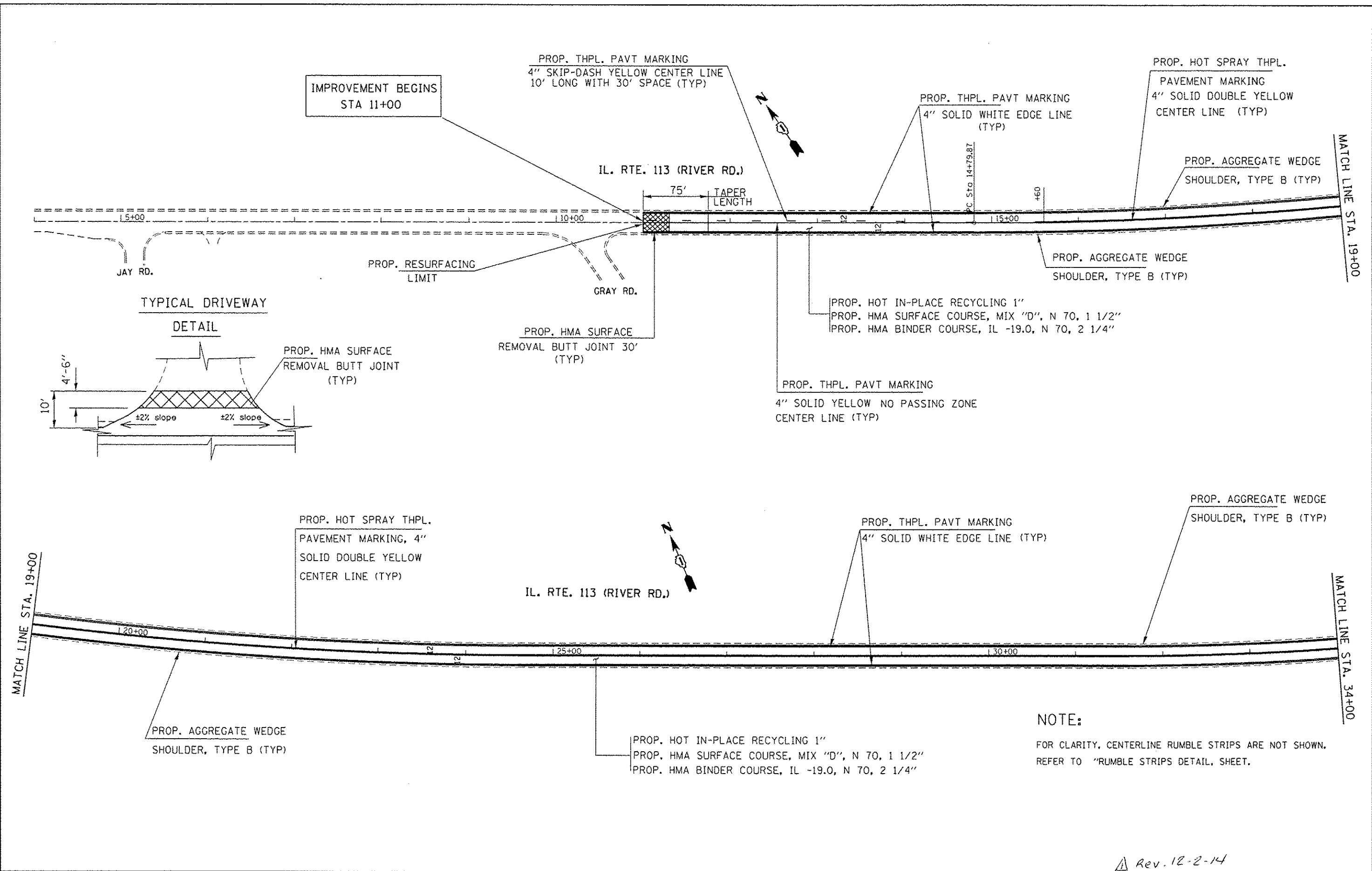
THE "AC TYPE" FOR POLYMERIZED HMA MIXES SHALL BE "SBS / SBR PG 76 -22" AND FOR NON-POLYMERIZED HMA THE "AC TYPE" SHALL BE "PG 64 -22" UNLESS MODIFIED BY DISTRICT ONE SPECIAL PROVISIONS.

FOR USE OF RECYCLED MATERIALS SEE SPECIAL PROVISIONS.

QUALITY MANAGEMENT PROGRAM (QMP) IDENTIFIES THE PARTICULAR QUANTITY CONTROL SPECIFICATION THAT APPLIES TO THE HMA MIXTURE.

MILLED RUMBLE STRIPS ARE TO BE PLACED ALONG CENTERLINE AT STA 11+00 TO STA 267+50.

REVISED A.G. 12/15/2014



IMPROVEMENT BEGINS  
STA 11+00

PROP. THPL. PAVT MARKING  
4" SKIP-DASH YELLOW CENTER LINE  
10' LONG WITH 30' SPACE (TYP)

PROP. THPL. PAVT MARKING  
4" SOLID WHITE EDGE LINE  
(TYP)

PROP. HOT SPRAY THPL.  
PAVEMENT MARKING  
4" SOLID DOUBLE YELLOW  
CENTER LINE (TYP)

IL. RTE. 113 (RIVER RD.)

75' TAPER LENGTH

JAY RD.

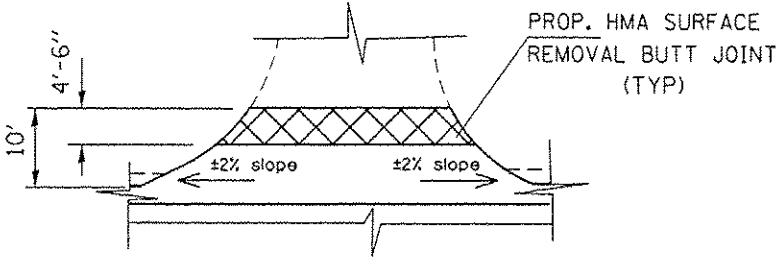
PROP. RESURFACING  
LIMIT

GRAY RD.

PROP. AGGREGATE WEDGE  
SHOULDER, TYPE B (TYP)

MATCH LINE STA. 19+00

TYPICAL DRIVEWAY  
DETAIL



PROP. HMA SURFACE  
REMOVAL BUTT JOINT 30'  
(TYP)

PROP. HOT IN-PLACE RECYCLING 1"  
PROP. HMA SURFACE COURSE, MIX "D", N 70, 1 1/2"  
PROP. HMA BINDER COURSE, IL -19.0, N 70, 2 1/4"

PROP. THPL. PAVT MARKING  
4" SOLID YELLOW NO PASSING ZONE  
CENTER LINE (TYP)

MATCH LINE STA. 19+00

PROP. HOT SPRAY THPL.  
PAVEMENT MARKING, 4"  
SOLID DOUBLE YELLOW  
CENTER LINE (TYP)

IL. RTE. 113 (RIVER RD.)

PROP. THPL. PAVT MARKING  
4" SOLID WHITE EDGE LINE (TYP)

PROP. AGGREGATE WEDGE  
SHOULDER, TYPE B (TYP)

MATCH LINE STA. 34+00

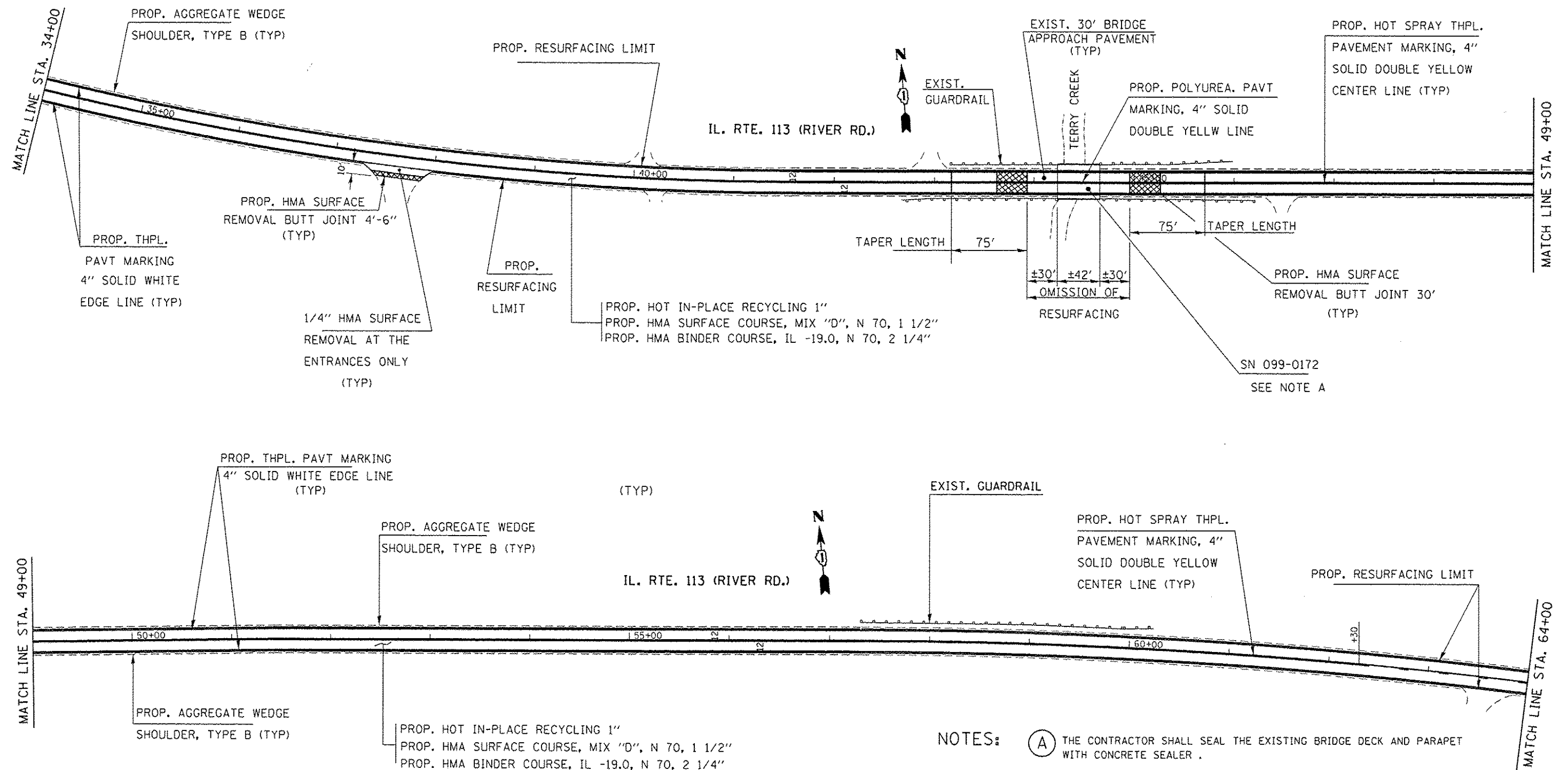
PROP. AGGREGATE WEDGE  
SHOULDER, TYPE B (TYP)

PROP. HOT IN-PLACE RECYCLING 1"  
PROP. HMA SURFACE COURSE, MIX "D", N 70, 1 1/2"  
PROP. HMA BINDER COURSE, IL -19.0, N 70, 2 1/4"

NOTE:  
FOR CLARITY, CENTERLINE RUMBLE STRIPS ARE NOT SHOWN.  
REFER TO "RUMBLE STRIPS DETAIL, SHEET.

Rev. 12-2-14

FILE NAME =	USER NAME = Gorengautab	DESIGNED -	REVISED -	STATE OF ILLINOIS DEPARTMENT OF TRANSPORTATION	FAS 1317 /IL 113 (RIVER ST) GRAY RD TO KANKAKEE CO. LINE ROADWAY AND PAVEMENT MARKING PLANS	F.A.S RTE.	SECTION	COUNTY	TOTAL SHEETS	SHEET NO.	
c:\p\work\p\dat\gorengautab\d8249442	D132311-shl-plan2.dgn	DRAWN -	REVISED -			1317	112A-RS	WILL	21	5	
	PLOT SCALE = 1/8" = 1'-0"	CHECKED -	REVISED -			CONTRACT NO. 60N53		ILLINOIS FED. AID PROJECT			
	PLOT DATE = 10/24/2014	DATE -	REVISED -			SCALE:	SHEET NO. OF SHEETS	STA.	TO STA.		



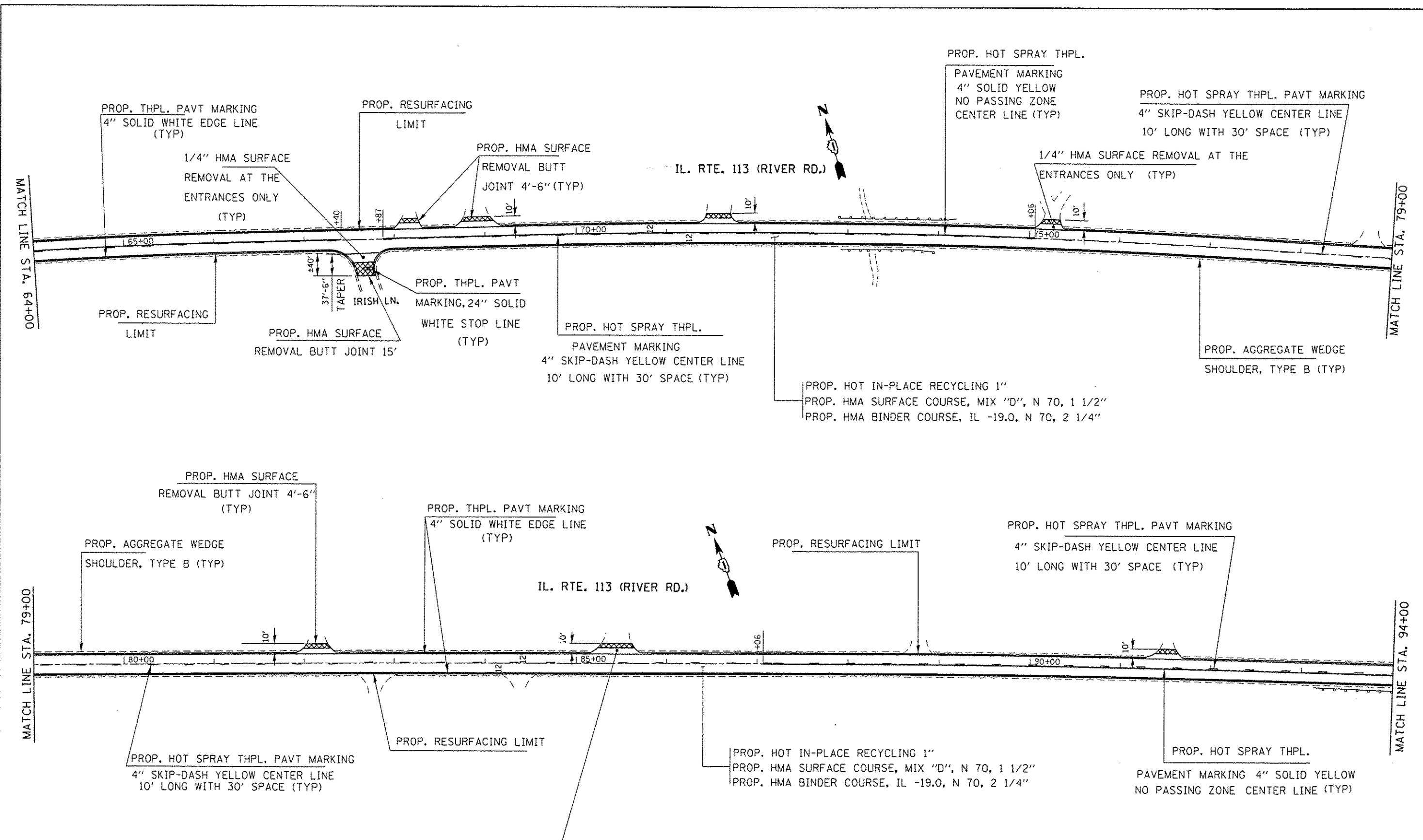
SN 099-0172  
SEE NOTE A

- NOTES:
- (A) THE CONTRACTOR SHALL SEAL THE EXISTING BRIDGE DECK AND PARAPET WITH CONCRETE SEALER .
  - THE CONTRACTOR SHALL CLEAN THE DECK PRIOR TO APPLICATION OF THE CONCRETE SEALER TO THE SATISFACTION OF THE ENGINEER.
  - COST OF THE CLEANING IS INCLUDED IN THE COST OF BRIDGE DECK CONCRETE SEALER. SEE BRIDGE PLANS SHT. #14.

FOR CLARITY, CENTERLINE RUMBLE STRIPS ARE NOT SHOWN.  
REFER TO "RUMBLE STRIPS DETAIL, SHEET.

Rev. 12-2-14

FILE NAME =	USER NAME = Gorangautob	DESIGNED -	REVISED -	<b>STATE OF ILLINOIS DEPARTMENT OF TRANSPORTATION</b>	<b>FAS 1317 /IL 113 (RIVER ST) GRAY RD TO KANKAKEE CO. LINE ROADWAY AND PAVEMENT MARKING PLANS</b>	F.A.S. RTE.	SECTION	COUNTY	TOTAL SHEETS	SHEET NO.
ci:\pw_vork\p\dot\gorangautob\08249442\1122311-shs-plan2.dgn		DRAWN -	REVISED -			112A	112A-RS	WILL	21	6
PLOT SCALE = 1/8" = 1'-0"		CHECKED -	REVISED -			CONTRACT NO. 60N53				
PLOT DATE = 10/24/2014		DATE -	REVISED -			ILLINOIS FED. AID PROJECT				

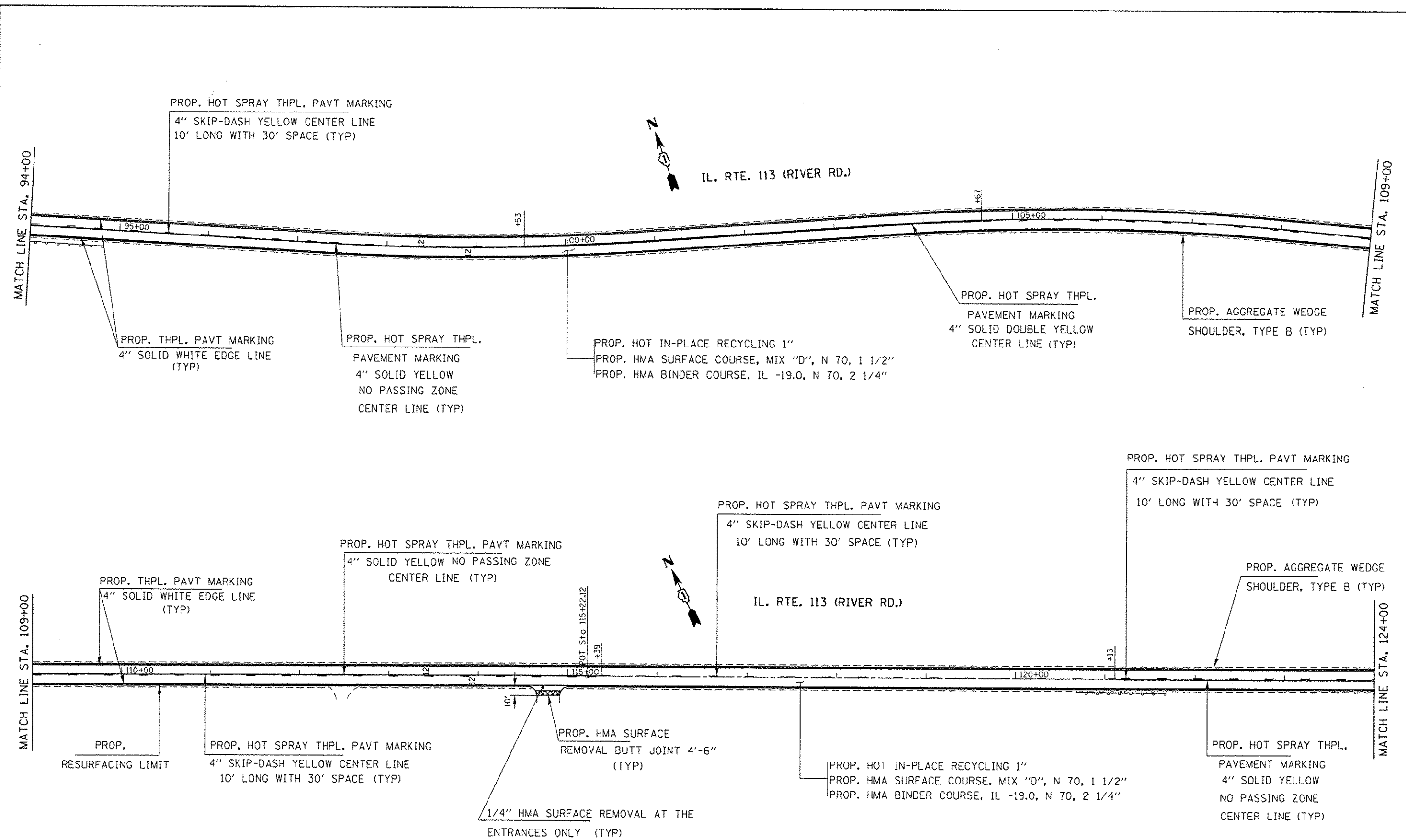


NOTE: FOR CLARITY, CENTERLINE RUMBLE STRIPS ARE NOT SHOWN. REFER TO "RUMBLE STRIPS DETAIL, SHEET.

Rev. 12-2-14

FILE NAME =	USER NAME = Corengoutob	DESIGNED -	REVISED -	<b>STATE OF ILLINOIS DEPARTMENT OF TRANSPORTATION</b>	<b>FAS 1317 /IL 113 (RIVER ST) GRAY RD TO KANKAKEE CO LINE ROADWAY AND PAVEMENT MARKING PLANS</b>	F.A.S. RTE.	SECTION	COUNTY	TOTAL SHEETS	SHEET NO.
ci:\pw\work\pridot\garengoutob\102249442\132311-shr-plan2.dgn	DRAWN -	REVISED -	1317			112A-RS	WILL	21	7	
PLOT SCALE = 100.0000' / 1"	CHECKED -	REVISED -	CONTRACT NO. 60N53							
PLOT DATE = 10/24/2014	DATE -	REVISED -	ILLINOIS FED. AID PROJECT							



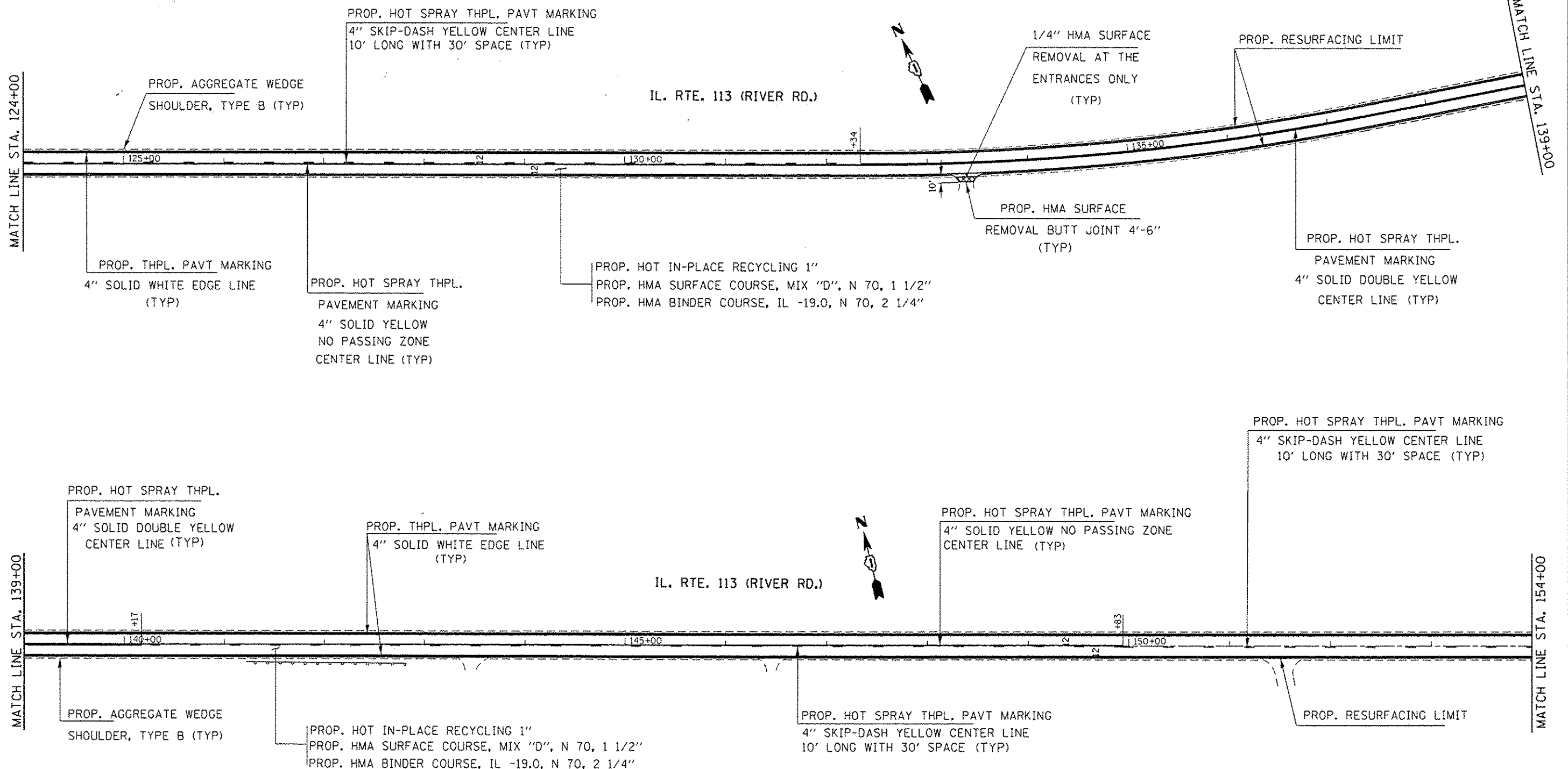


NOTE: FOR CLARITY, CENTERLINE RUMBLE STRIPS ARE NOT SHOWN.  
REFER TO "RUMBLE STRIPS DETAIL, SHEET.

Rev. 12-2-14

FILE NAME = c:\p\work\pav\dot\gorengautab\d0249442\132311-sht-plan2.dgn	USER NAME = Gorengautab	DESIGNED -	REVISED -	<b>STATE OF ILLINOIS DEPARTMENT OF TRANSPORTATION</b>	<b>FAS 1317 / IL 113 (RIVER ST) GRAY RD TO KANKAKEE CO. LINE ROADWAY AND PAVEMENT MARKING PLANS</b>	F.A.S. RTE. 1317	SECTION 112A-RS	COUNTY WILL	TOTAL SHEETS 21	SHEET NO. 8
	PLOT SCALE = 100.0000' / 1"	CHECKED -	REVISED -			CONTRACT NO. 60N53				
	PLOT DATE = 10/24/2014	DATE -	REVISED -			ILLINOIS FED. AID PROJECT				
						SCALE: SHEET NO. OF SHEETS STA. TO STA.				

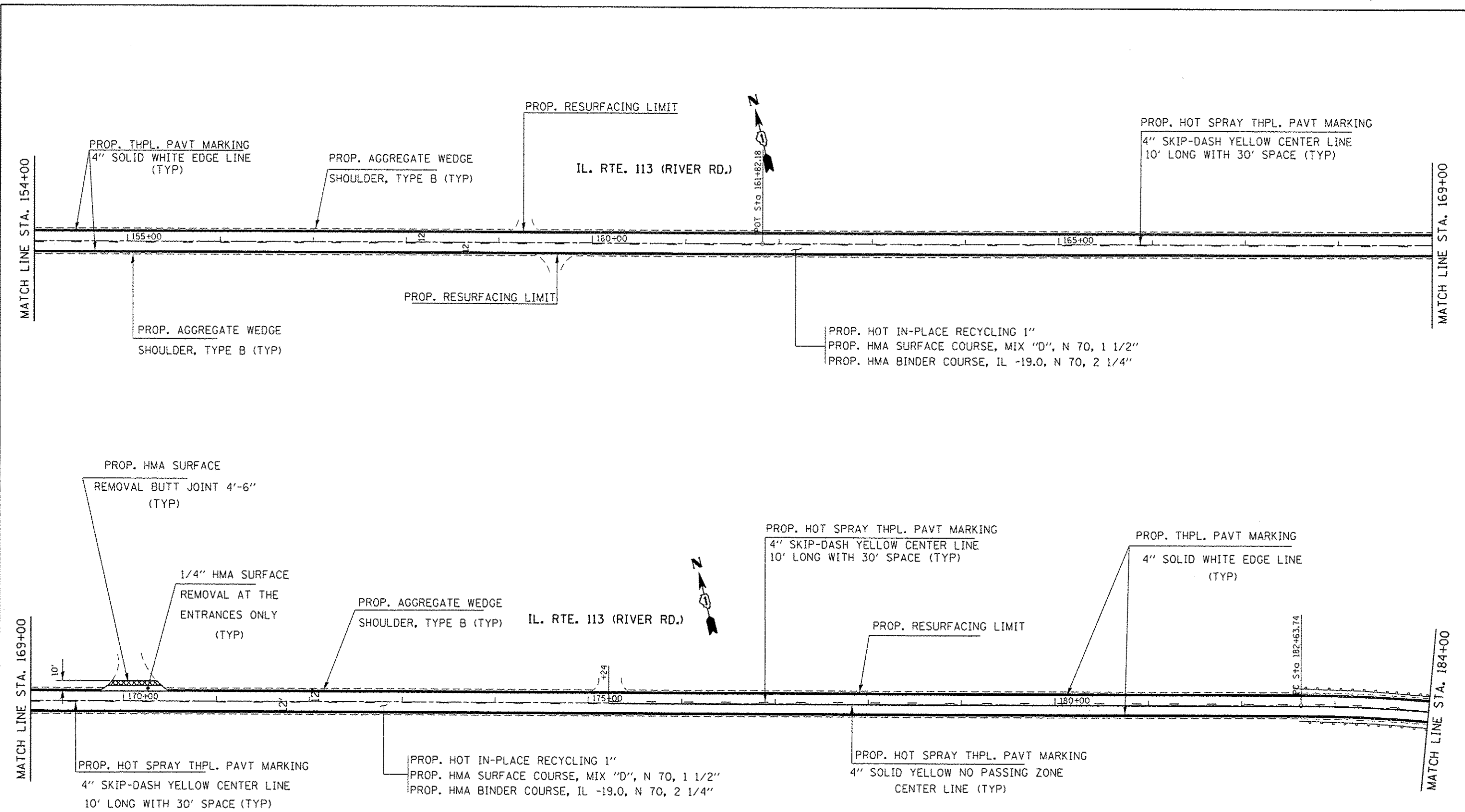




NOTE: FOR CLARITY, CENTERLINE RUMBLE STRIPS ARE NOT SHOWN. REFER TO "RUMBLE STRIPS DETAIL, SHEET.

Rev. 12-2-14

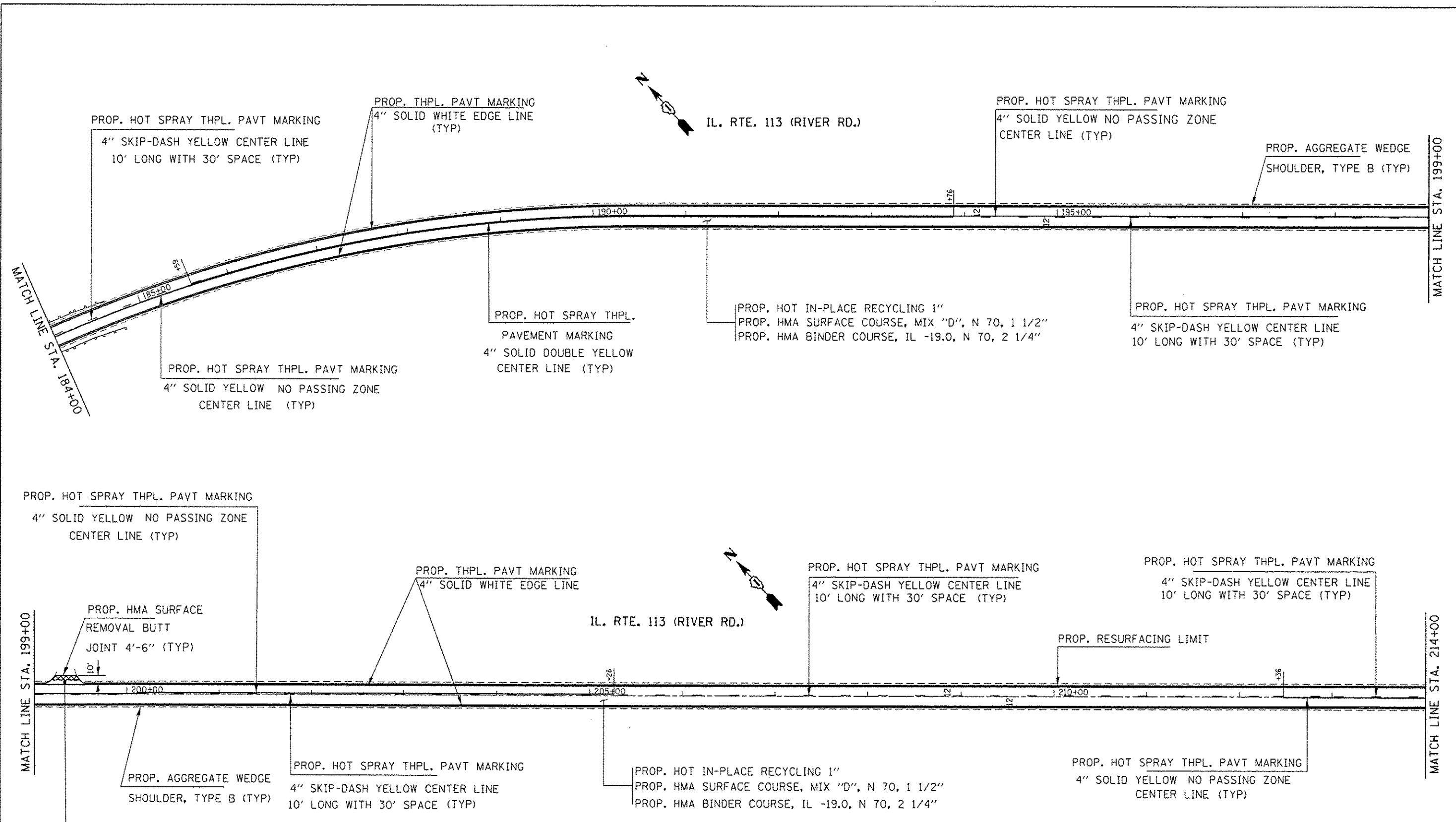
FILE NAME =	USER NAME = Gorangeautab	DESIGNED -	REVISED -	<b>STATE OF ILLINOIS DEPARTMENT OF TRANSPORTATION</b>	<b>FAS 1317 / IL 113 (RIVER ST) GRAY RD TO KANKAKEE CO. LINE ROADWAY AND PAVEMENT MARKING PLANS</b>	F.A.S. RTE.	SECTION	COUNTY	TOTAL SHEETS	SHEET NO.
ci:\px\work\pavdat\gorangeautab\0249442\122311-shr-plan2.dgn	DRAWN -	REVISED -	1317			112A-RS	WILL	21	9	
PLOT SCALE = 1/8" = 1' / 1/4"	CHECKED -	REVISED -	CONTRACT NO. 60N53							
PLOT DATE = 10/24/2014	DATE -	REVISED -	ILLINOIS FED. AID PROJECT							
					SCALE:	SHEET NO.	OF SHEETS	STA.	TO STA.	



NOTE: FOR CLARITY, CENTERLINE RUMBLE STRIPS ARE NOT SHOWN. REFER TO "RUMBLE STRIPS DETAIL, SHEET.

Rev. 12-2-14

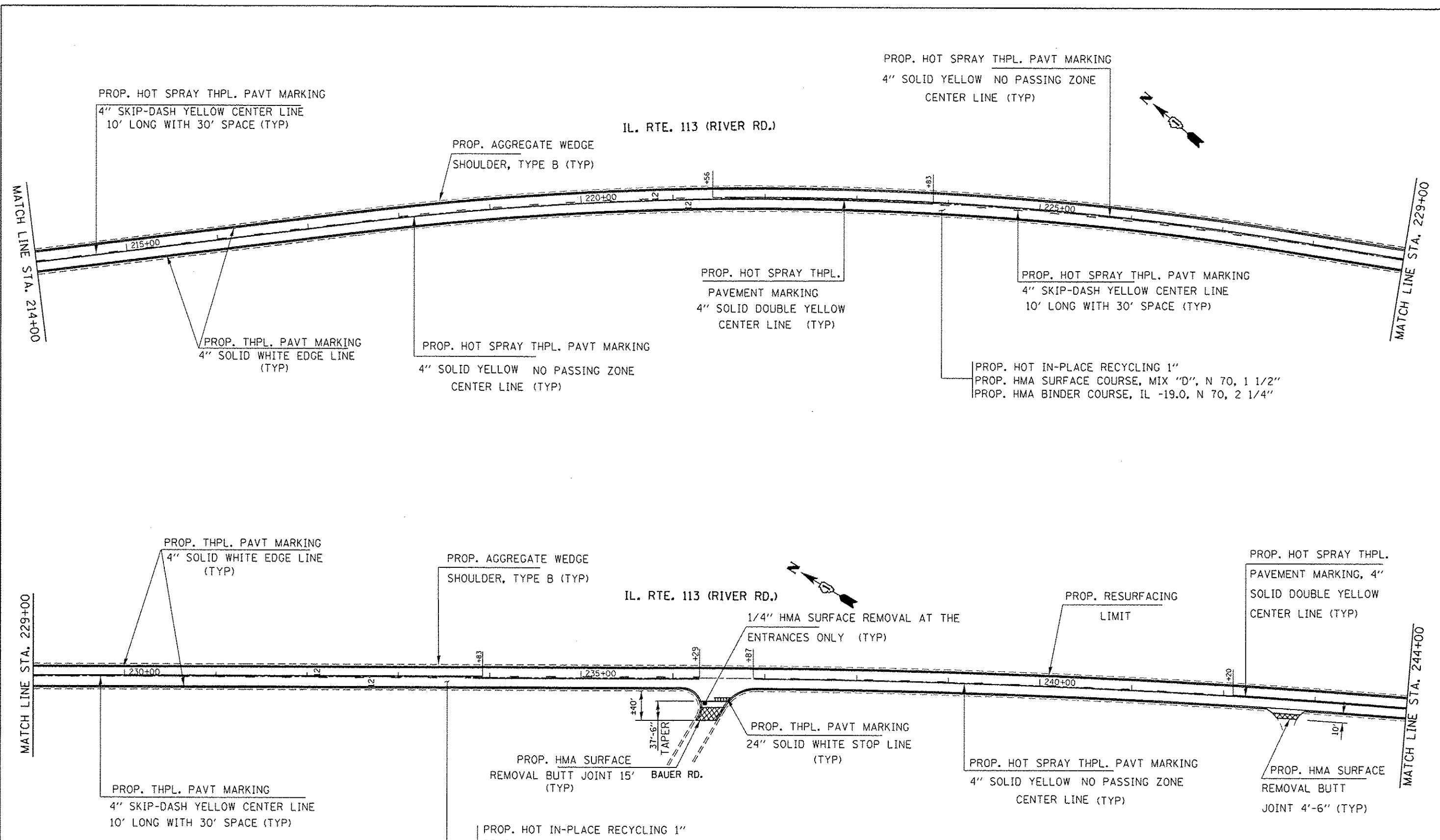
FILE NAME =	USER NAME = Gorengoutab	DESIGNED -	REVISED -	<b>STATE OF ILLINOIS DEPARTMENT OF TRANSPORTATION</b>	<b>FAS 1317 /IL 113 (RIVER ST) GRAY RD TO KANKAKEE CO. LINE ROADWAY AND PAVEMENT MARKING PLANS</b>	F.A.S. RTE.	SECTION	COUNTY	TOTAL SHEETS	SHEET NO.
ci:\pav\work\pvidat\gorengoutab\18249442\1122311-shc-plan2.dgn	DRAWN -	REVISED -	1317			112A-RS	WILL	21	10	
PLOT SCALE = 1/8" = 1'-0"	CHECKED -	REVISED -	CONTRACT NO. 60N53							
PLOT DATE = 10/24/2014	DATE -	REVISED -	ILLINOIS FED. AID PROJECT							



NOTE: FOR CLARITY, CENTERLINE RUMBLE STRIPS ARE NOT SHOWN. REFER TO "RUMBLE STRIPS DETAIL, SHEET.

Rev. 12-2-14

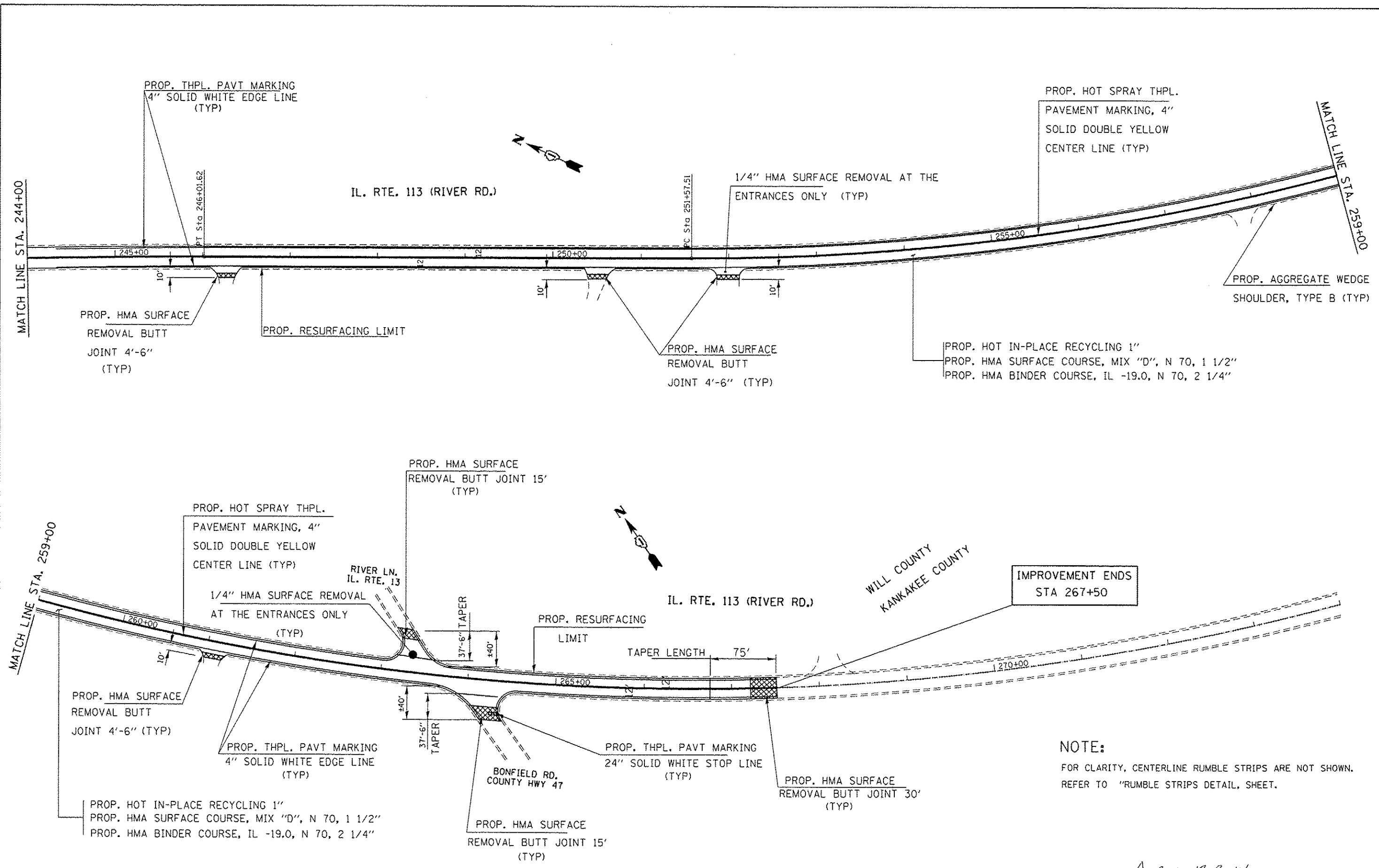
FILE NAME =	USER NAME = Gorengautab	DESIGNED -	REVISED -	<b>STATE OF ILLINOIS DEPARTMENT OF TRANSPORTATION</b>	<b>FAS 1317 /IL 113 (RIVER ST) GRAY RD TO KANKAKEE CO. LINE ROADWAY AND PAVEMENT MARKING PLANS</b>	F.A.S. RTE.	SECTION	COUNTY	TOTAL SHEETS	SHEET NO.
en:\pwork\pwork\gorengautab\0249442\132311-ah-1-plan2.dgn	DRAWN -	REVISED -	1317			112A-RS	WILL	21	11	
PLOT SCALE = 1/8" = 1'-0"	CHECKED -	REVISED -	CONTRACT NO. 60N53							
PLOT DATE = 10/24/2014	DATE -	REVISED -	ILLINOIS FED. AID PROJECT							



NOTE: FOR CLARITY, CENTERLINE RUMBLE STRIPS ARE NOT SHOWN.  
REFER TO "RUMBLE STRIPS DETAIL, SHEET.

Rev. 12-2-14

FILE NAME =	USER NAME = Gorangautab	DESIGNED -	REVISED -	<b>STATE OF ILLINOIS DEPARTMENT OF TRANSPORTATION</b>	<b>FAS 1317 / IL 113 (RIVER ST) GRAY RD TO KANKAKEE CO. LINE ROADWAY AND PAVEMENT MARKING PLANS</b>	F.A.S. RTE.	SECTION	COUNTY	TOTAL SHEETS	SHEET NO.
ct:\p\work\p\wido\t\gorengautab\0249442\0132311-ah-plot2.dgn	DRAWN -	REVISED -	1317			112A-RS	WILL	21	12	
PLOT SCALE = 1/8" = 1'-0"	CHECKED -	REVISED -	CONTRACT NO. 60N53							
PLOT DATE = 10/24/2014	DATE -	REVISED -	ILLINOIS FED. AID PROJECT							



**NOTE:**  
 FOR CLARITY, CENTERLINE RUMBLE STRIPS ARE NOT SHOWN.  
 REFER TO "RUMBLE STRIPS DETAIL, SHEET."

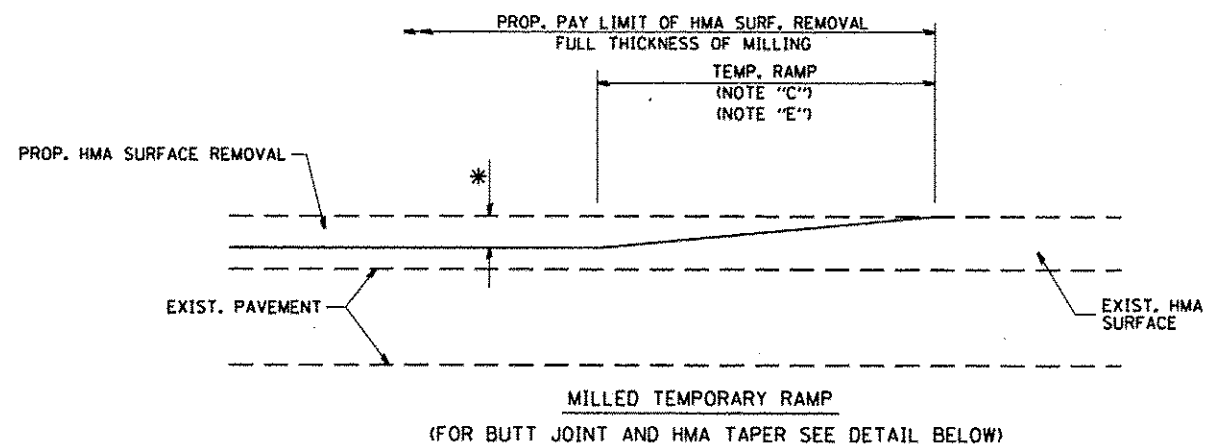
Rev. 12-2-14

FILE NAME =	USER NAME = Gorengautab	DESIGNED -	REVISED -	<b>STATE OF ILLINOIS DEPARTMENT OF TRANSPORTATION</b>	<b>FAS 1317 / IL 113 (RIVER ST) GRAY RD TO KANKAKEE CO. LINE ROADWAY AND PAVEMENT MARKING PLANS</b>	F.A.S. RTE.	SECTION	COUNTY	TOTAL SHEETS	SHEET NO.
ci:\pw\work\pav\dot\gorengautab\8249442\0132311-shs-plan2.dgn	DRAWN -	REVISED -	1317			112A-R5	WILL	21	13	
PLT SCALE = 1/8" = 1'-0"	CHECKED -	REVISED -	CONTRACT NO. 60N53							
PLT DATE = 10/24/2014	DATE -	REVISED -	ILLINOIS FED. AID PROJECT							

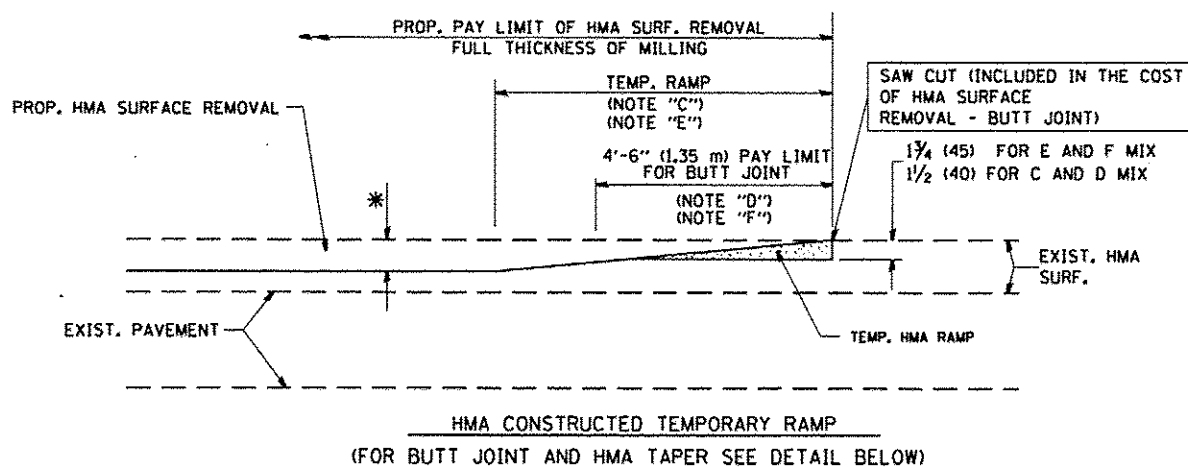






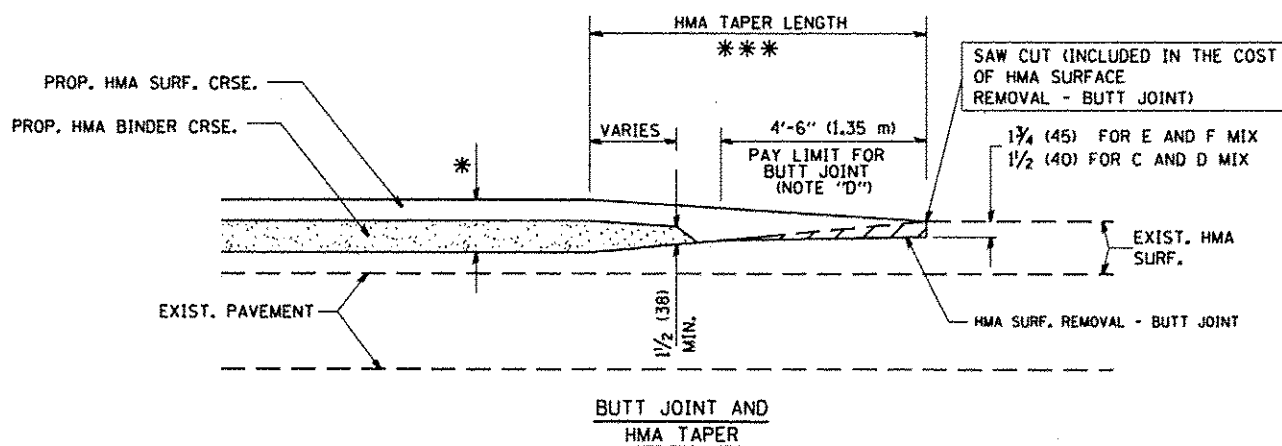


**OPTION 1**

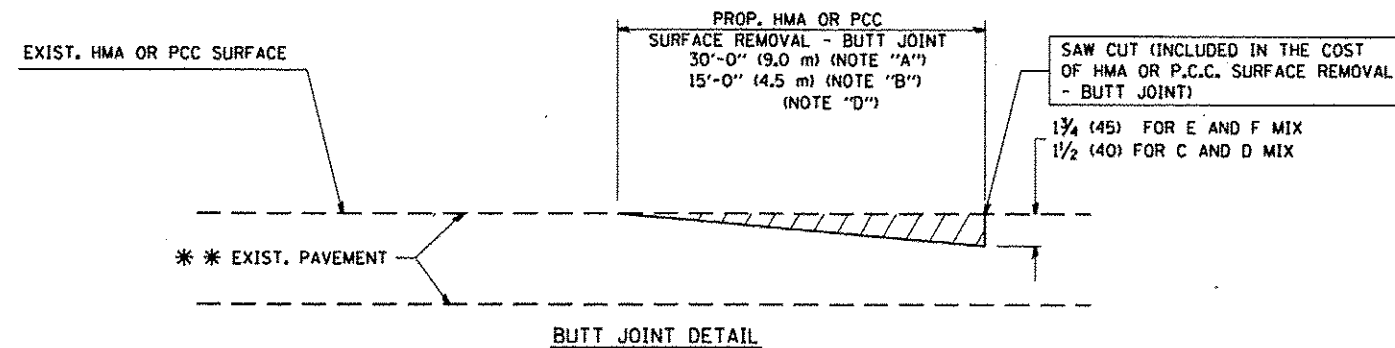


**OPTION 2**

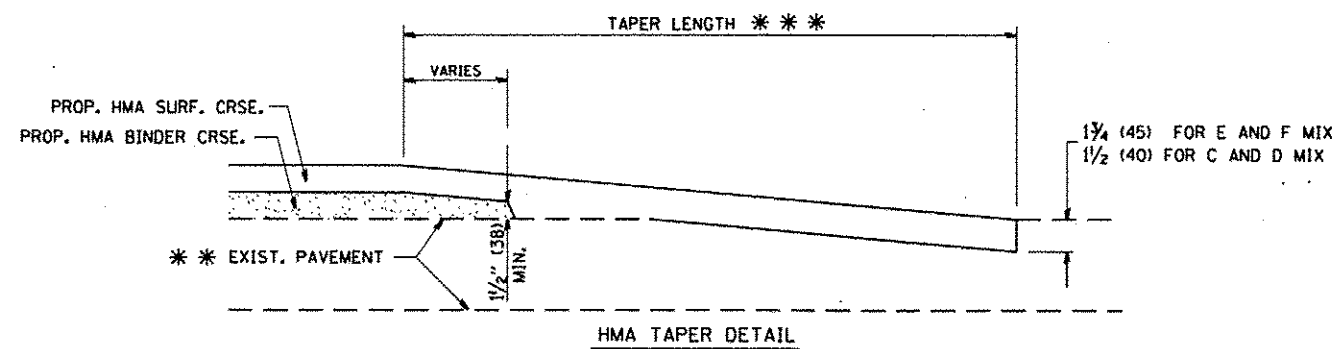
**TYPICAL TEMPORARY RAMP**



**TYPICAL BUTT JOINT AND HMA TAPER FOR MILLING AND RESURFACING**



**BUTT JOINT DETAIL**



**HMA TAPER DETAIL**

**TYPICAL BUTT JOINT AND HMA TAPER FOR RESURFACING ONLY**

\*\*\* PC CONCRETE, HMA OR HMA RESURFACED PAVEMENT.

**NOTES**

- A: MAINLINE ROADWAYS AND MAJOR SIDE ROADS.
  - B: MINOR SIDE ROADS.
  - C: THE TEMP. RAMP SHALL BE CONSTRUCTED IMMEDIATELY UPON REMOVAL OF THE EXISTING HMA SURFACE.
  - D: THE BUTT JOINT SHALL BE CONSTRUCTED IMMEDIATELY PRIOR TO PLACING THE PROPOSED HMA COURSES.
  - E: TAPER THE TEMP. RAMP AT A RATE OF 3'-0" (900 mm) PER 1 INCH (25 mm) OF MILLING THICKNESS.
  - F: INSTALLATION AND REMOVAL OF THE 4'-6" (1.35 m) TEMP. RAMP IS INCLUDED IN COST OF HMA SURFACE REMOVAL - BUTT JOINT
  - G: SEE ARTICLE 406.08 AND 406.14 OF THE STANDARD SPECIFICATIONS FOR "HMA AND/OR PCC SURFACE REMOVAL, BUTT JOINT".
- \* SEE TYPICAL SECTIONS FOR MILLING THICKNESS.
- \*\*\* 20'-0" (6.1 m) PER 1 (25) RESURFACING (NOTE "A")  
 10'-0" (3.0 m) PER 1 (25) RESURFACING (NOTE "B")

**BASIS OF PAYMENT:**

THE BUTT JOINT WILL BE PAID FOR AT THE CONTRACT UNIT PRICE PER SQUARE YARD (SQUARE METER) FOR "HOT-MIX ASPHALT SURFACE REMOVAL - BUTT JOINT" OR FOR "PORTLAND CEMENT CONCRETE SURFACE REMOVAL - BUTT JOINT".

ALL DIMENSIONS ARE IN INCHES (MILLIMETERS) UNLESS OTHERWISE SHOWN.

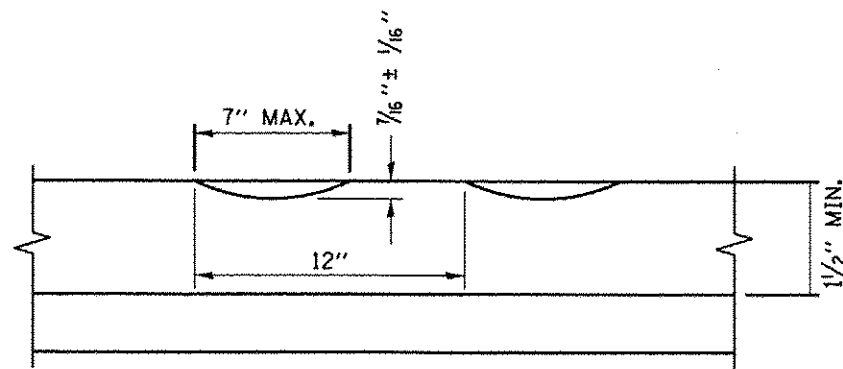
FILE NAME :	USER NAME = pyzzenowskirb	DESIGNED - M. DE YONG	REVISED - R. SHAH 10-25-94
c:\pwork\psidat\pyzzenowskirb\024944	\024944.dgn	DRAWN -	REVISED - A. ABBAS 03-21-97
	PLOT SCALE = 100.0000 1/16"	CHECKED -	REVISED - M. GOMEZ 04-06-01
	PLOT DATE = 2/7/2013	DATE - 06-13-90	REVISED - R. BORO 01-01-07

**STATE OF ILLINOIS  
DEPARTMENT OF TRANSPORTATION**

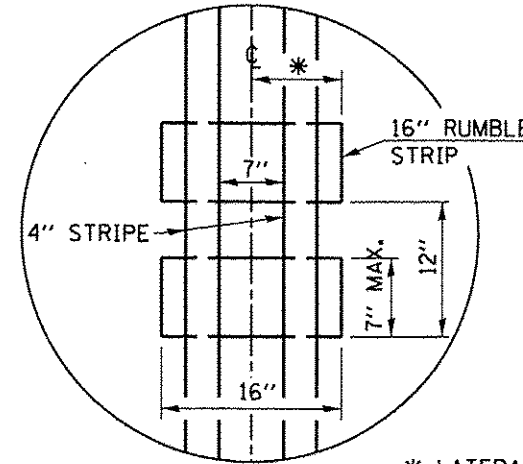
**BUTT JOINT AND  
HMA TAPER DETAILS**

SCALE: NONE SHEET NO. 1 OF 1 SHEETS STA. TO STA.

F.A.S. RTE.	SECTION	COUNTY	TOTAL SHEETS	SHEET NO.
1317	112A-RS	WILL	21	16
BD400-05 BD32		CONTRACT NO. 60W53		
FED. ROAD DIST. NO. 1 ILLINOIS FED. AID PROJECT				



**SECTION A-A**



\* LATERAL DEVIATION SHALL NOT EXCEED ONE INCH IN 100 FEET.

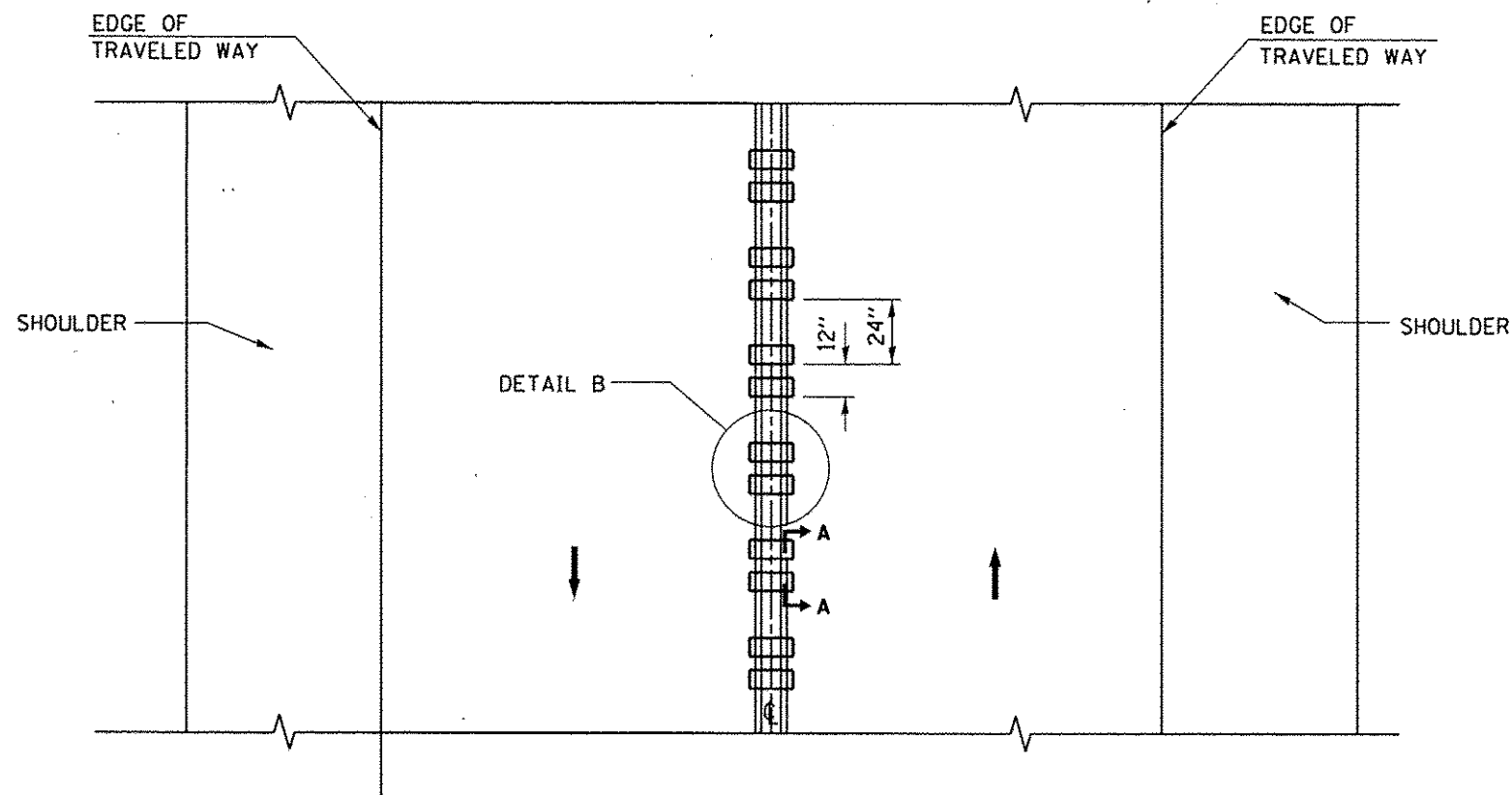
**DETAIL B**

GENERAL NOTES

- CENTERLINE RUMBLE STRIPS SHALL BE CONSTRUCTED ACCORDING TO SECTION 642 ALONG THE CENTERLINE OF PAVEMENT.
- SEE STANDARD 780001 FOR OTHER STRIPING LAYOUTS. RUMBLE STRIPS SHALL NOT BE PLACED ON BRIDGES.
- ALL RUMBLE STRIPS SHALL BE MILLED.
- CENTERLINE RUMBLE STRIPS SHALL BE CONTINUOUS THROUGH CONNECTIONS OF SIDEROADS WITH NO LEFT TURN LANES.
- DISCONTINUE CENTERLINE RUMBLE STRIPS THROUGH THE LIMITS OF ALL LEFT TURN LANES, INCLUDING ANY LANE TAPER SECTIONS.
- AFTER RUMBLE STRIPS ARE INSTALLED, THE PAVEMENT SURFACE SHALL BE SWEEPED CLEAN PRIOR TO THE PLACEMENT OF THE NEW PAVEMENT MARKINGS.
- WHERE USED, ADJUST SPACING OF RAISED REFLECTIVE PAVEMENT MARKERS TO FALL IN WIDER GAP BETWEEN RUMBLE STRIPS.

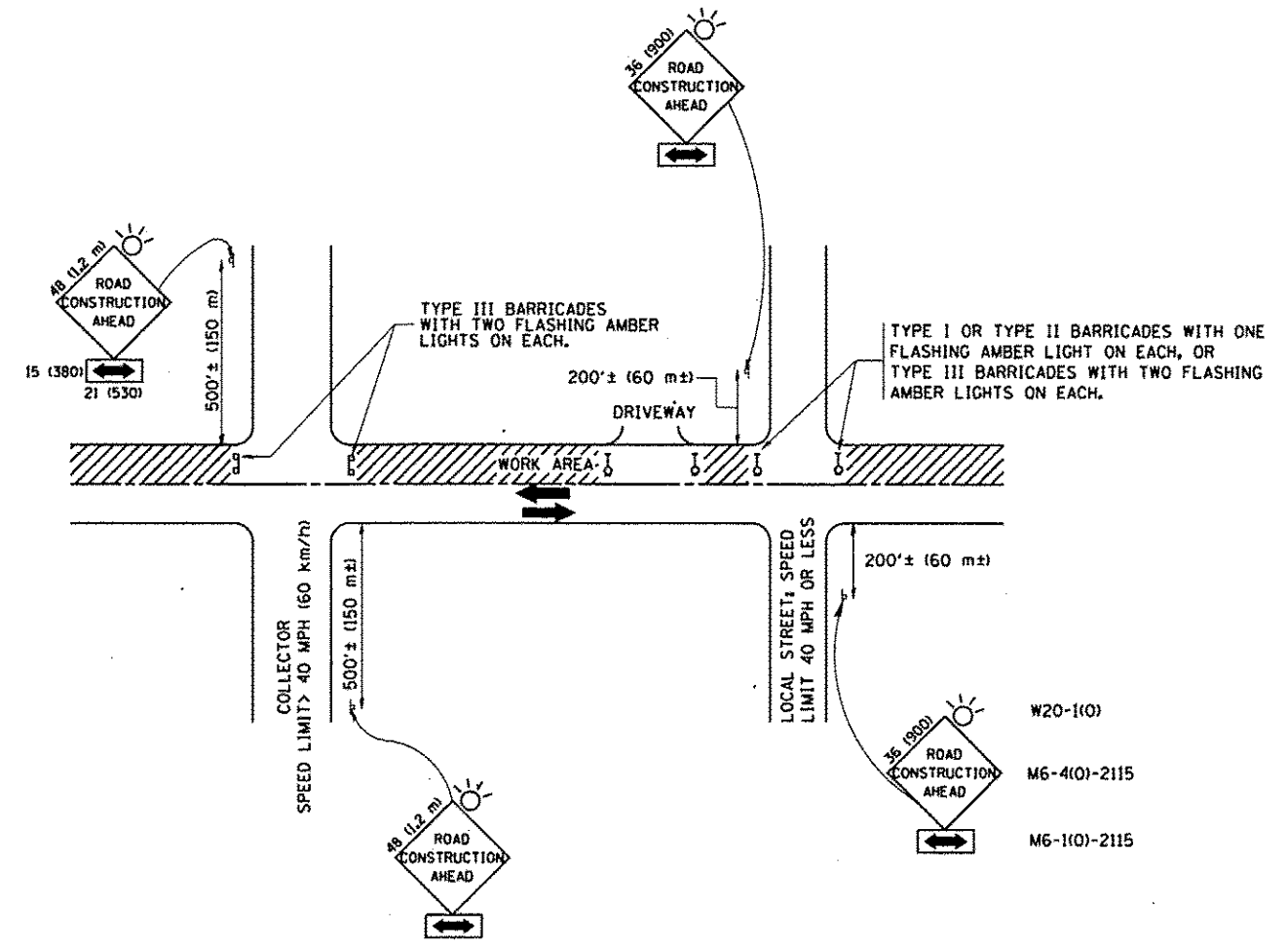
BASIS OF PAYMENT

- THIS WORK WILL BE PAID FOR AT THE CONTRACT UNIT PRICE PER FOOT FOR CENTERLINE-RUMBLE STRIP OF THE WIDTH SPECIFIED.
- HOT-SPRAY THERMOPLASTIC PAVEMENT MARKING WILL BE USED OVER THE RUMBLE STRIPS, AND WILL BE PAID FOR SEPARATELY.



**TWO-WAY ROAD**

FILE NAME : 01\pwwork\pwwid\pyrzanowski\bd824944	USER NAME : pyrzanowski	DESIGNED - R. BORO	REVISED -	<b>STATE OF ILLINOIS DEPARTMENT OF TRANSPORTATION</b>	<b>RUMBLE STRIPES FOR CENTERLINE, NON-FREEWAY</b>		F.A.S. RTE. 1317	SECTION 112A-RS	COUNTY WILL	TOTAL SHEETS 21	SHEET NO. 17	
PLOT SCALE = 100.0000' / in.	CHECKED -	REVISIED -	REVISIED -		SCALE: NONE	SHEET NO. 1 OF 1 SHEETS	STA.	TO STA.	BD 55	CONTRACT NO. 60N53		
PLOT DATE = 2/7/2013	DATE - 08-06-2012	REVISIED -	REVISIED -		FED. ROAD DIST. NO. 1 ILLINOIS FED. AID PROJECT							



**TRAFFIC CONTROL AND PROTECTION FOR SIDE ROADS, INTERSECTIONS, AND DRIVEWAYS**

**NOTES:**

- A. FOR NO LANE RESTRICTION ON THE SIDE ROAD OR DRIVEWAYS
  1. SIDE ROAD WITH A SPEED LIMIT OF 40 MPH (60 km/h) OR LESS AS SHOWN ON THE DRAWING AND AS DIRECTED BY THE ENGINEER:
    - a) ONE ROAD CONSTRUCTION AHEAD SIGN 36 x 36 (900x900) WITH A FLASHER AND FLAG MOUNTED ON IT APPROXIMATELY 200' (60 m) IN ADVANCE OF THE MAIN ROUTE.
    - b) THE CLOSED PORTION OF THE MAIN ROUTE SHALL BE PROTECTED BY BLOCKING WITH TYPE I, TYPE II OR TYPE III BARRICADES, 1/3 OF THE CROSS SECTION OF THE CLOSED PORTION.
  2. SIDE ROAD WITH A SPEED LIMIT GREATER THAN 40 MPH (60 km/h) AS SHOWN ON THE DRAWING AND AS DIRECTED BY THE ENGINEER:
    - a) ONE ROAD CONSTRUCTION AHEAD SIGN 48 x 48 (1.2 m x 1.2 m) WITH A FLASHER MOUNTED ON IT APPROXIMATELY 500' (150 m) IN ADVANCE OF THE MAIN ROUTE.
    - b) THE CLOSED PORTION OF THE MAIN ROUTE SHALL BE PROTECTED BY BLOCKING WITH TYPE III BARRICADES, 1/2 OF THE CROSS SECTION OF THE CLOSED PORTION.
  3. WHEN THE SIDE ROAD LIES BETWEEN THE BEGINNING OF THE MAINLINE SIGNING AND THE WORK ZONE, A SINGLE HEADED ARROW (M6-1) SHALL BE USED IN LIEU OF THE DOUBLE HEADED ARROW (M6-4).
- B. FOR A LANE CLOSURE ON A SIDE ROAD OR DRIVEWAY:
 

USE APPLICABLE PORTIONS OF THE TYPICAL APPLICATION OF TRAFFIC CONTROL DEVICES (STD. 701501, STD. 701606 OR THE APPROPRIATE STANDARD). THE SPACING OF SIGNS AND BARRICADES SHALL BE ADJUSTED FOR FIELD CONDITIONS AS DIRECTED BY THE ENGINEER. THE DIRECTIONAL ARROW SHALL BE COVERED OR REMOVED WHEN NO LONGER CONSISTENT WITH THE SIDE ROAD LANE CLOSURE.
- C. ADVANCE WARNING SIGNS ARE TO BE OMITTED ON DRIVEWAY UNLESS OTHERWISE NOTED.
- D. THE TRAFFIC CONTROL AND PROTECTION FOR SIDE ROADS, INTERSECTIONS, AND DRIVEWAYS SHALL BE INCIDENTAL TO THE COST OF SPECIFIED TRAFFIC CONTROL STANDARDS OR ITEMS.

All dimensions are in millimeters (inches) unless otherwise shown.

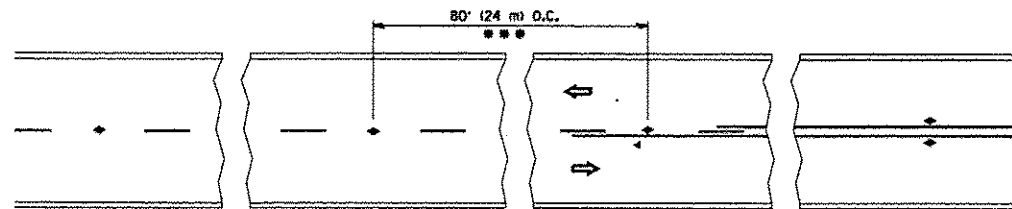
FILE NAME :	USER NAME : pyzanoskurb	DESIGNED - LHA	REVISED - J. OBERLE 10-18-95
oi\paw\work\paw\pyzanoskurb\024944	DrawStd.dgn	DRAWN -	REVISED - A. HOUSEH 03-06-96
	PLOT SCALE = 100.0000 / in.	CHECKED -	REVISED - A. HOUSEH 10-15-96
	PLOT DATE = 2/7/2013	DATE - 06-89	REVISED - T. RAMMACHER 01-06-00

**STATE OF ILLINOIS  
DEPARTMENT OF TRANSPORTATION**

**TRAFFIC CONTROL AND PROTECTION FOR  
SIDE ROADS, INTERSECTIONS, AND DRIVEWAYS**

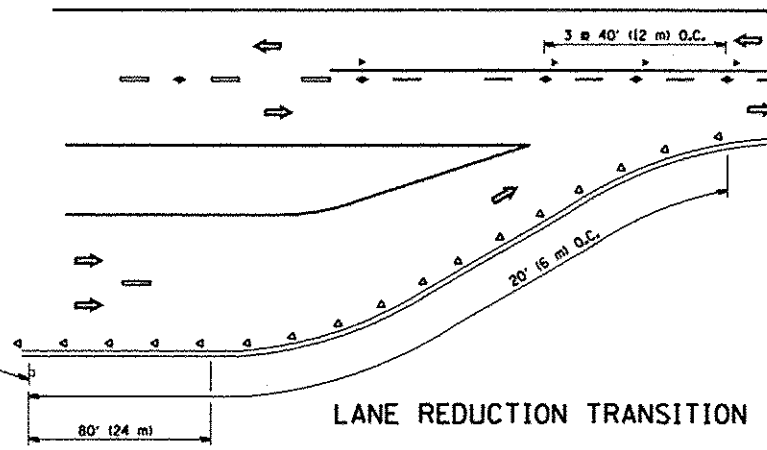
SCALE: NONE SHEET NO. 1 OF 1 SHEETS STA. TO STA.

F.A.S. RTE. 1317	SECTION 112A-RS	COUNTY WILL	TOTAL SHEETS 21	SHEET NO. 18
TC-10			CONTRACT NO. 60N53	
FED. ROAD DIST. NO. 1 ILLINOIS FED. AID PROJECT				

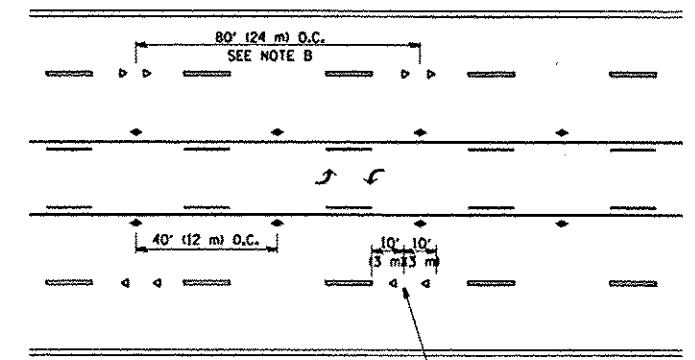


\*\*\* REDUCE TO 40' (12 m) O.C. ON CURVES WITH POSTED OR ADVISORY SPEED 45 M.P.H. (70 km/h) OR LESS.

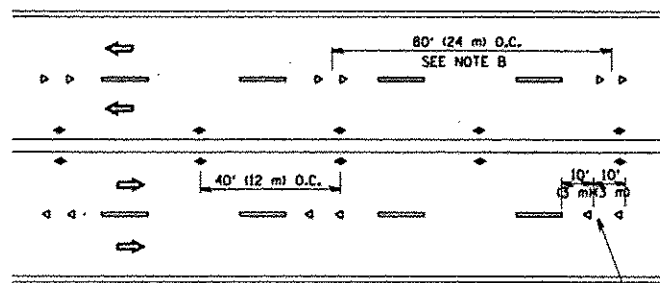
TWO-LANE/TWO-WAY



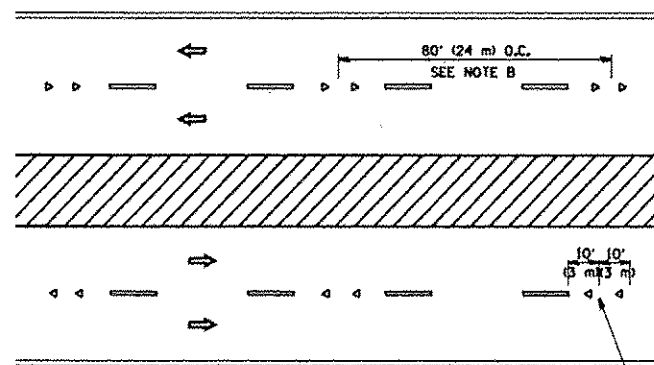
LANE REDUCTION TRANSITION



TWO-WAY LEFT TURN



MULTI-LANE/UNDIVIDED



MULTI-LANE/DIVIDED

GENERAL NOTES

1. MARKERS USED WITH DASHED LINES SHALL BE CENTERED IN THE GAP BETWEEN SEGMENTS.
2. MARKERS USED ADJACENT TO SOLID LINES SHALL BE OFFSET 2 TO 3 (50 TO 75) TOWARD TRAFFIC AS SHOWN.
3. MARKERS THROUGH TANGENTS LESS THAN 500' (150 m) IN LENGTH BETWEEN CURVES SHALL BE INSTALLED AT THE LESSER OF THE TWO CURVE SPACINGS.

SYMBOLS

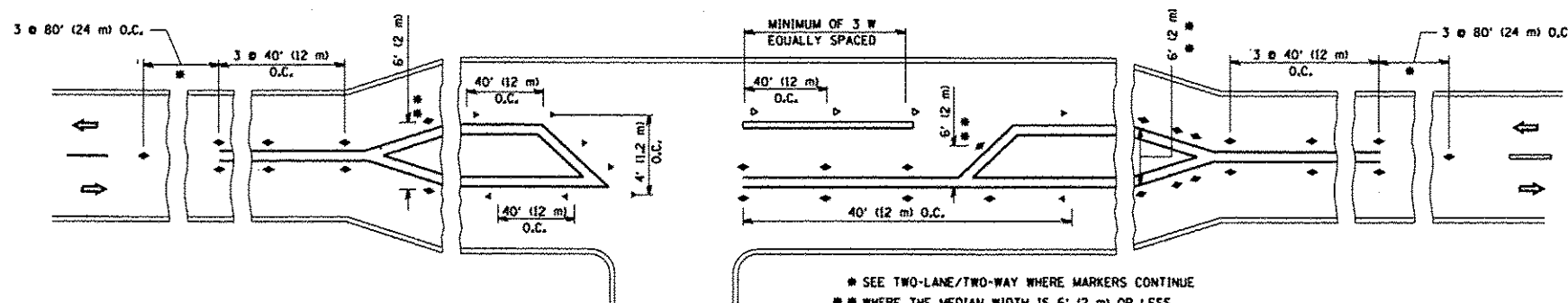
- YELLOW STRIPE
- WHITE STRIPE
- ◀ ONE-WAY AMBER MARKER
- ◄ ONE-WAY CRYSTAL MARKER (W/O)
- ◆ TWO-WAY AMBER MARKER

LANE MARKER NOTES

- A. USE DOUBLE LANE LINE MARKERS SPACED AS SHOWN.
- B. REDUCE TO 40' (12 m) O.C. ON CURVES WHERE ADVISORY SPEEDS ARE 10 M.P.H. (20 km/h) LOWER THAN POSTED SPEEDS.

DESIGN NOTES

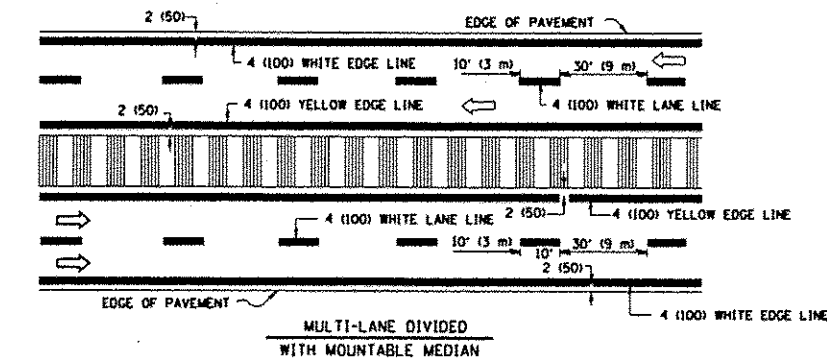
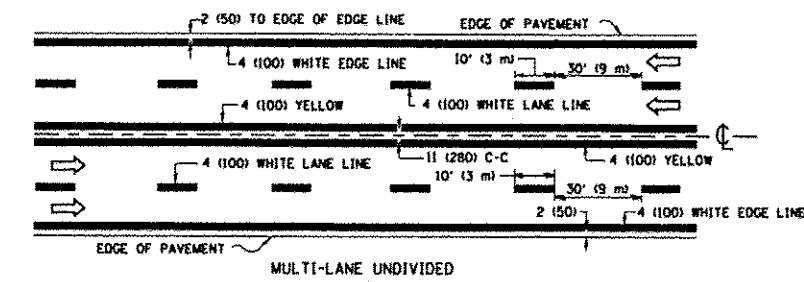
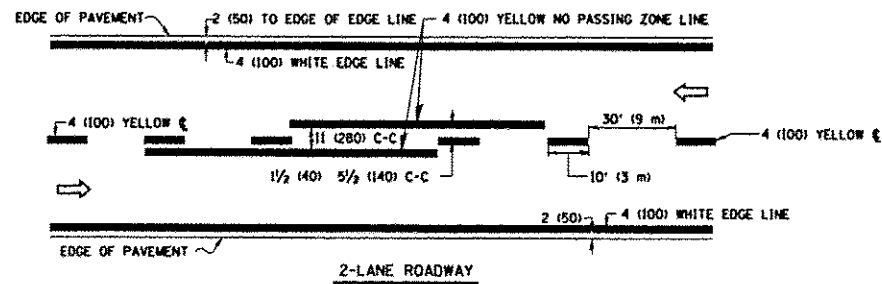
1. DOUBLE LANE LINE MARKERS SHALL BE USED UNLESS SPECIFIED OTHERWISE.
2. EXCEPT AS SHOWN ON THE LANE REDUCTION TRANSITION AND FREEWAY EXIT RAMP DETAIL, MARKERS ARE NOT TO BE SPECIFIED ON RIGHT EDGE LINES.
3. THE EXACT MARKER LIMITS, SPACING, AND COLOR SHALL BE INCLUDED IN THE PLANS WHEN STANDARD SPECIFICATIONS ARE NOT BEING USED.
4. MARKERS SHOULD NOT BE USED ALONGSIDE CURBS EXCEPT FOR EXTREMELY SHORT SECTIONS OF CURBS WHERE NOT MORE THAN TWO MARKERS WOULD BE INVOLVED.



LEFT TURN

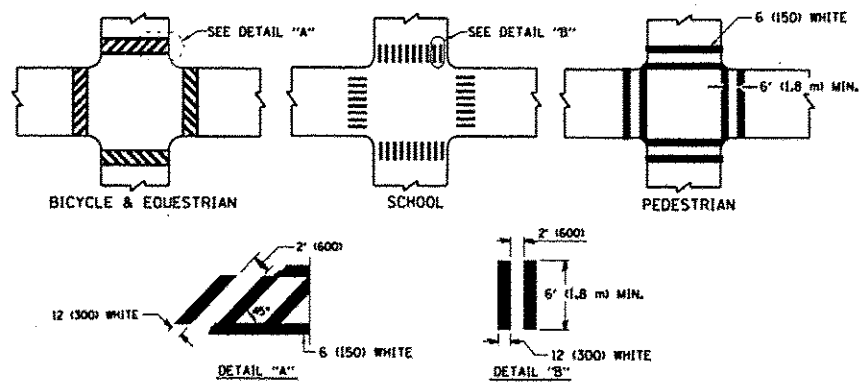
All dimensions are in inches (millimeters) unless otherwise shown.

FILE NAME : o:\pwork\pwork\pyrzenovskirb\d024944	USER NAME : pyrzenovskirb	DESIGNED -	REVISED - T. RAMMACHER 09-19-94	STATE OF ILLINOIS DEPARTMENT OF TRANSPORTATION	TYPICAL APPLICATIONS			F.A.S. RTE.	SECTION	COUNTY	TOTAL SHEET NO.	
	ADistStd.dgn	DRAWN -	REVISED - T. RAMMACHER 03-12-99		RAISED REFLECTIVE PAVEMENT MARKERS (SNOW-PLOW RESISTANT)	1317	112A-RS	WILL	21	19		
	PLOT SCALE = 100.0000' / in.	CHECKED -	REVISED - T. RAMMACHER 01-06-00		SCALE: NONE	SHEET NO. 1 OF 1 SHEETS	STA.	TO STA.	CONTRACT NO. 60N53			
	PLOT DATE = 2/7/2013	DATE -	REVISED - C. JUCIUS 09-09-09					FED. ROAD DIST. NO. 1 ILLINOIS FED. AID PROJECT				

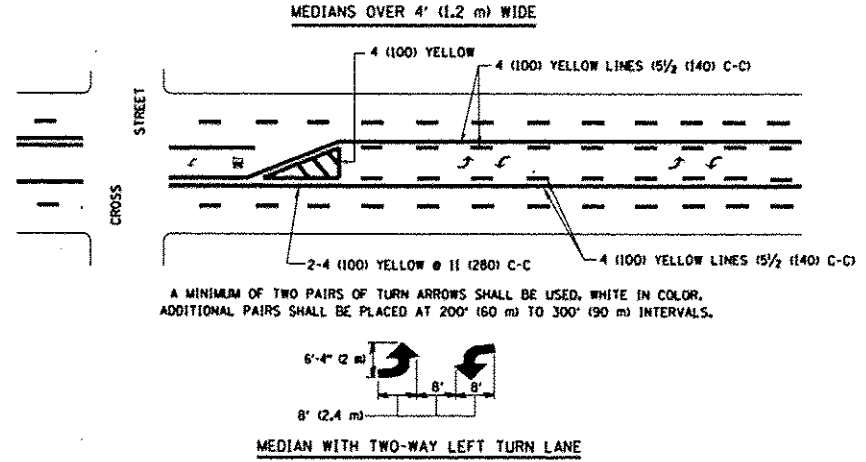
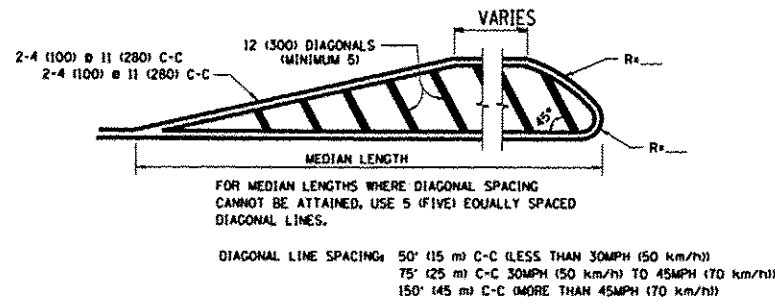
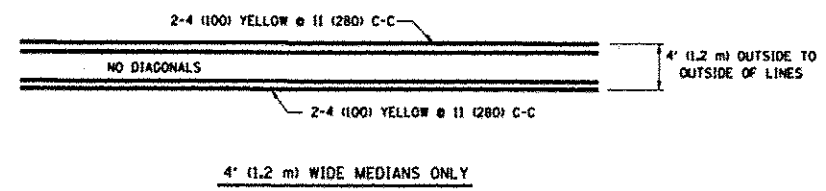


NOTE: MEDIANS WITH BARRIER CURB DO NOT REQUIRE AN EDGE LINE

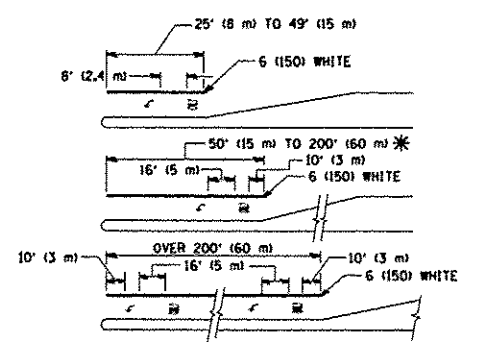
TYPICAL LANE AND EDGE LINE MARKING



TYPICAL CROSSWALK MARKING



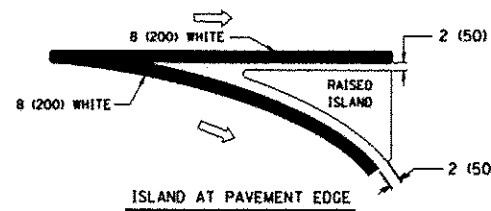
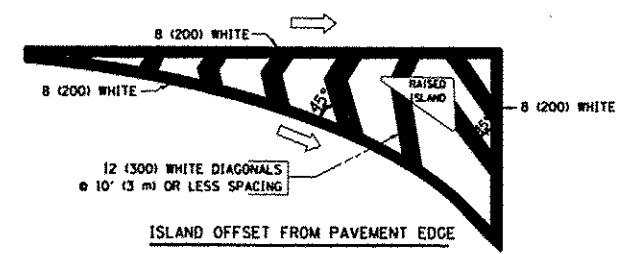
TYPICAL PAINTED MEDIAN MARKING



\* TURN LANES IN EXCESS OF 400' (120 m) IN LENGTH MAY HAVE AN ADDITIONAL SET OF ARROW - "ONLY" INSTALLED MIDWAY BETWEEN THE OTHER TWO SETS OF ARROW - "ONLY".

TYPICAL LEFT (OR RIGHT) TURN LANE MARKING

TYPICAL TURN LANE MARKING

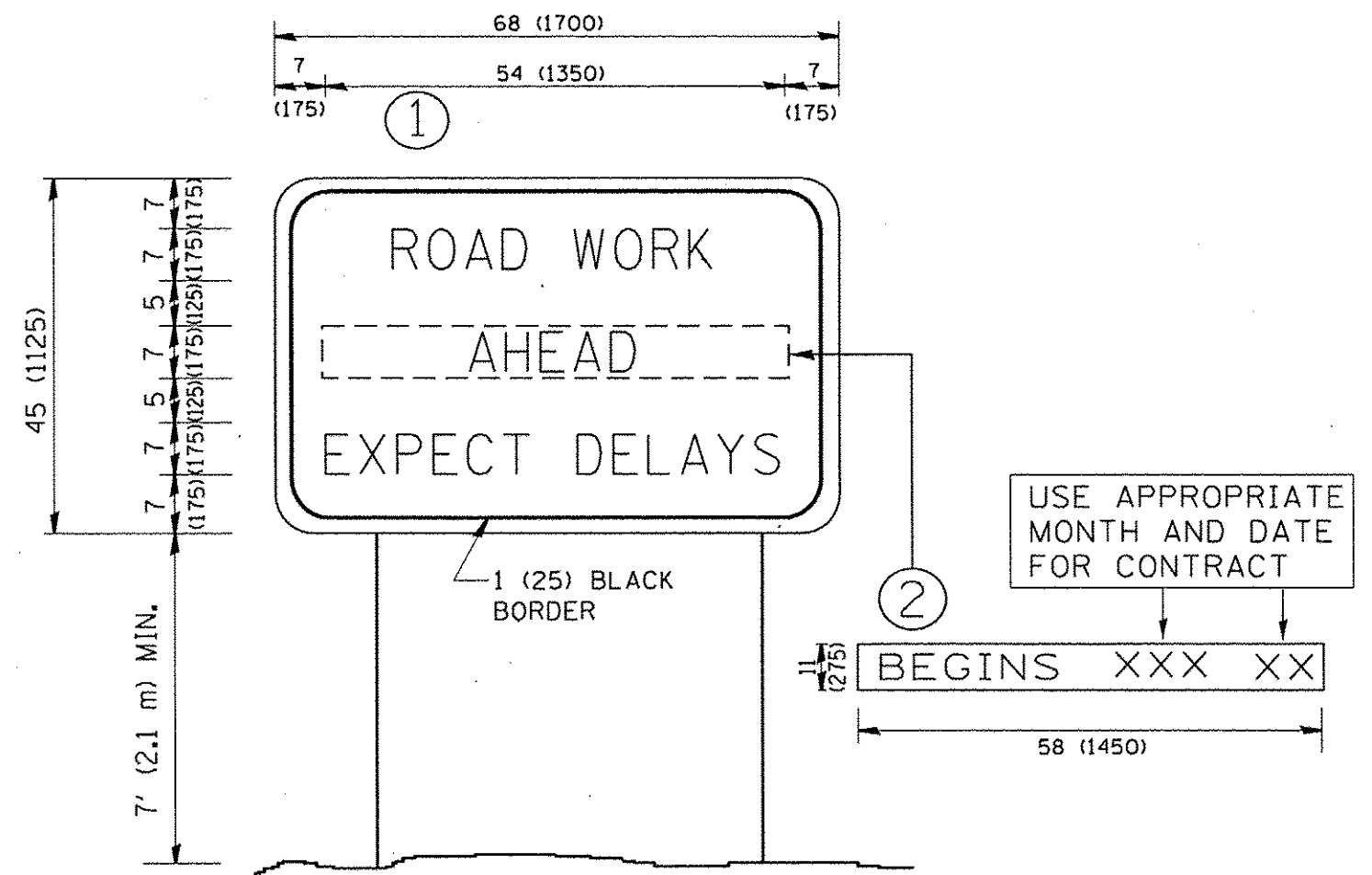


TYPICAL ISLAND MARKING

TYPE OF MARKING	WIDTH OF LINE	PATTERN	COLOR	SPACING / REMARKS
CENTERLINE ON 2 LANE PAVEMENT	4 (100)	SKIP-DASH	YELLOW	10' (3 m) LINE WITH 30' (9 m) SPACE
CENTERLINE ON MULTI-LANE UNDIVIDED PAVEMENT	2 @ 4 (100)	SOLID	YELLOW	11 (280) C-C
NO PASSING ZONE LINES FOR ONE DIRECTION FOR BOTH DIRECTIONS	4 (100) 2 @ 4 (100)	SOLID SOLID	YELLOW YELLOW	5/2 (140) C-C FROM SKIP-DASH CENTERLINE 11 (280) C-C OMIT SKIP-DASH CENTERLINE BETWEEN
LANE LINES	4 (100) 5 (125) ON FREEWAYS	SKIP-DASH SKIP-DASH	WHITE WHITE	10' (3 m) LINE WITH 30' (9 m) SPACE
DOTTED LINES (EXTENSIONS OF CENTER, LANE OR TURN LANE MARKINGS)	SAME AS LINE BEING EXTENDED	SKIP-DASH	SAME AS LINE BEING EXTENDED	2' (600) LINE WITH 6' (1.8 m) SPACE
EDGE LINES	4 (100)	SOLID	YELLOW-LEFT WHITE-RIGHT	OUTLINE MOUNTABLE MEDIANS IN YELLOW; EDGE LINES ARE NOT USED NEXT TO BARRIER CURB
TURN LANE MARKINGS	6 (150) LINE; FULL SIZE LETTERS & SYMBOLS 18" (2.4m)	SOLID	WHITE	SEE TYPICAL TURN LANE MARKING DETAIL
TWO WAY LEFT TURN MARKING	2 @ 4 (100) EACH DIRECTION 8' (2.4m) LEFT ARROW	SKIP-DASH AND SOLID IN PAIRS	YELLOW WHITE	10' (3 m) LINE WITH 30' (9 m) SPACE FOR SKIP-DASH 5/2 (140) C-C BETWEEN SOLID LINE AND SKIP-DASH LINE SEE TYPICAL TWO-WAY LEFT TURN MARKING DETAIL
CROSSWALK LINES (PEDESTRIAN) A. DIAGONALS (BIKE & EQUESTRIAN) B. LONGITUDINAL BARS (SCHOOL)	2 @ 6 (150) 12 (300) @ 45° 12 (300) @ 90°	SOLID SOLID SOLID	WHITE WHITE WHITE	NOT LESS THAN 6' (1.8 m) APART 2' (600) APART SEE TYPICAL CROSSWALK MARKING DETAILS.
STOP LINES	24 (600)	SOLID	WHITE	PLACE 4' (1.2 m) IN ADVANCE OF AND PARALLEL TO CROSSWALK, IF PRESENT, OTHERWISE, PLACE AT DESIRED STOPPING POINT, PARALLEL TO CROSSROAD CENTERLINE, WHERE POSSIBLE
PAINTED MEDIANS	2 @ 4 (100) WITH 12 (300) DIAGONALS @ 45° NO DIAGONALS USED FOR 4' (1.2 m) WIDE MEDIANS	SOLID	YELLOW TWO WAY TRAFFIC WHITE; ONE WAY TRAFFIC	11 (280) C-C FOR THE DOUBLE LINE SEE TYPICAL PAINTED MEDIAN MARKING.
CORE MARKING AND CHANNELIZING LINES	8 (200) WITH 12 (300) DIAGONALS @ 45°	SOLID	WHITE	DIAGONALS: 15' (4.5 m) C-C (LESS THAN 30MPH (50 km/h)) 20' (6 m) C-C (30MPH (50 km/h) TO 45MPH (70 km/h)) 30' (9 m) C-C (OVER 45MPH (70 km/h))
RAILROAD CROSSING	24 (600) TRANSVERSE LINES; "RR" 15 6" (1.8 m) LETTERS; 16 (400) LINE FOR "X"	SOLID	WHITE	SEE STATE STANDARD 780001 AREA OF: "R" = 3.6 SQ. FT. (0.33 m²) EACH "X" = 54.0 SQ. FT. (5.0 m²)
SHOULDER DIAGONALS	12 (300) @ 45°	SOLID	WHITE - RIGHT YELLOW - LEFT	50' (15 m) C-C (LESS THAN 30MPH (50 km/h)) 75' (22.5 m) C-C (30 MPH (50 km/h) TO 45MPH (70 km/h)) 150' (45 m) C-C (OVER 45MPH (70 km/h))

FOR FURTHER DETAILS ON PAVEMENT MARKING REFER TO STANDARD SPECIFICATIONS FOR ROAD AND BRIDGE CONSTRUCTION AND STATE STANDARD 780001.

All dimensions are in inches (millimeters) unless otherwise shown.



**NOTES:**

1. USE BLACK LETTERING ON ORANGE BACKGROUND.
2. ERECT SIGNS IN ADVANCE OF THE LOCATION FOR THE "ROAD CONSTRUCTION AHEAD" SIGN AT LOCATIONS AS DIRECTED BY THE ENGINEER.
3. ERECT SIGN ① WITH INSTALLED PANEL ② ONE WEEK PRIOR TO THE START OF CONSTRUCTION.
4. REMOVE PANEL ② SOON AFTER THE START OF CONSTRUCTION.
5. SEE SPECIAL PROVISION FOR "TEMPORARY INFORMATION SIGNING" FOR ADDITIONAL INFORMATION.
6. ONE SIGN ASSEMBLY EQUALS 25.70 SQ. FT. (2.3 SQ. M.)
7. SHALL BE PAID FOR AS TEMPORARY INFORMATION SIGNING.

ALL DIMENSIONS ARE IN INCHES (MILLIMETERS) UNLESS OTHERWISE SHOWN.

FILE NAME :	USER NAME :	DESIGNED :	REVISED :	<b>STATE OF ILLINOIS DEPARTMENT OF TRANSPORTATION</b>	<b>ARTERIAL ROAD INFORMATION SIGN</b>	F.A.S. RTE.	SECTION	COUNTY	TOTAL SHEETS	SHEET NO.
cr\pr-work\p\rdot\pyrzonovakirb\d024944	\D.stStd.dgn	DRAWN :	REVISED - R. MIRS 09-15-97			1317	112A-RS	WILL	21	21
	PLOT SCALE = 100.0000 ' / in.	CHECKED :	REVISED - T. RAMMACHER 02-02-99			TC-22		CONTRACT NO. 60N53		
	PLOT DATE = 2/7/2013	DATE :	REVISED - C. JUCIUS 01-31-07			FED. ROAD DIST. NO. 1 ILLINOIS FED. AID PROJECT				
					SCALE: NONE	SHEET NO. 1 OF 1 SHEETS	STA.	TO STA.		